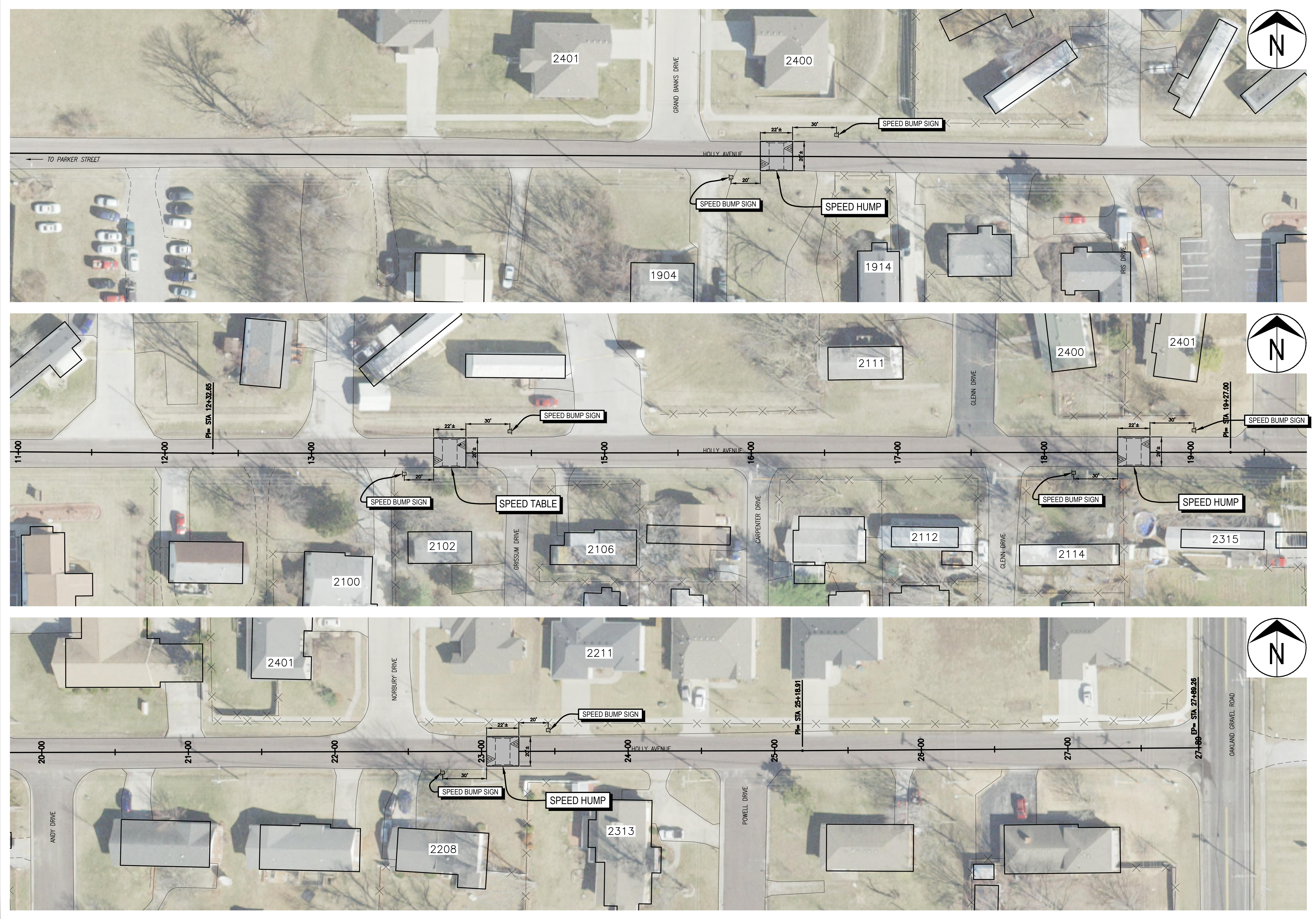


o:\caddpro\traffic\calming\holly\_avenue\holly\_avenue\_traffic\_calming.dwg



2011 Orthophoto Source: Boone County Assessor

No.	Date	By	Revision

**HOLLY AVENUE TRAFFIC CALMING**  
Plan Sheet

City of Columbia, Missouri  
Department of Public Works

David Allen Nichols Registered Professional Engineer E-24212
File No. .
Scale: 1" = 30'
Date: 1/7/2020
Des. T.N.S.
Dwn. D.G.W.
Chk. J.D.R.
Sheet 1 of 4