

SIDEWALK WITH GRASS PARKWAY

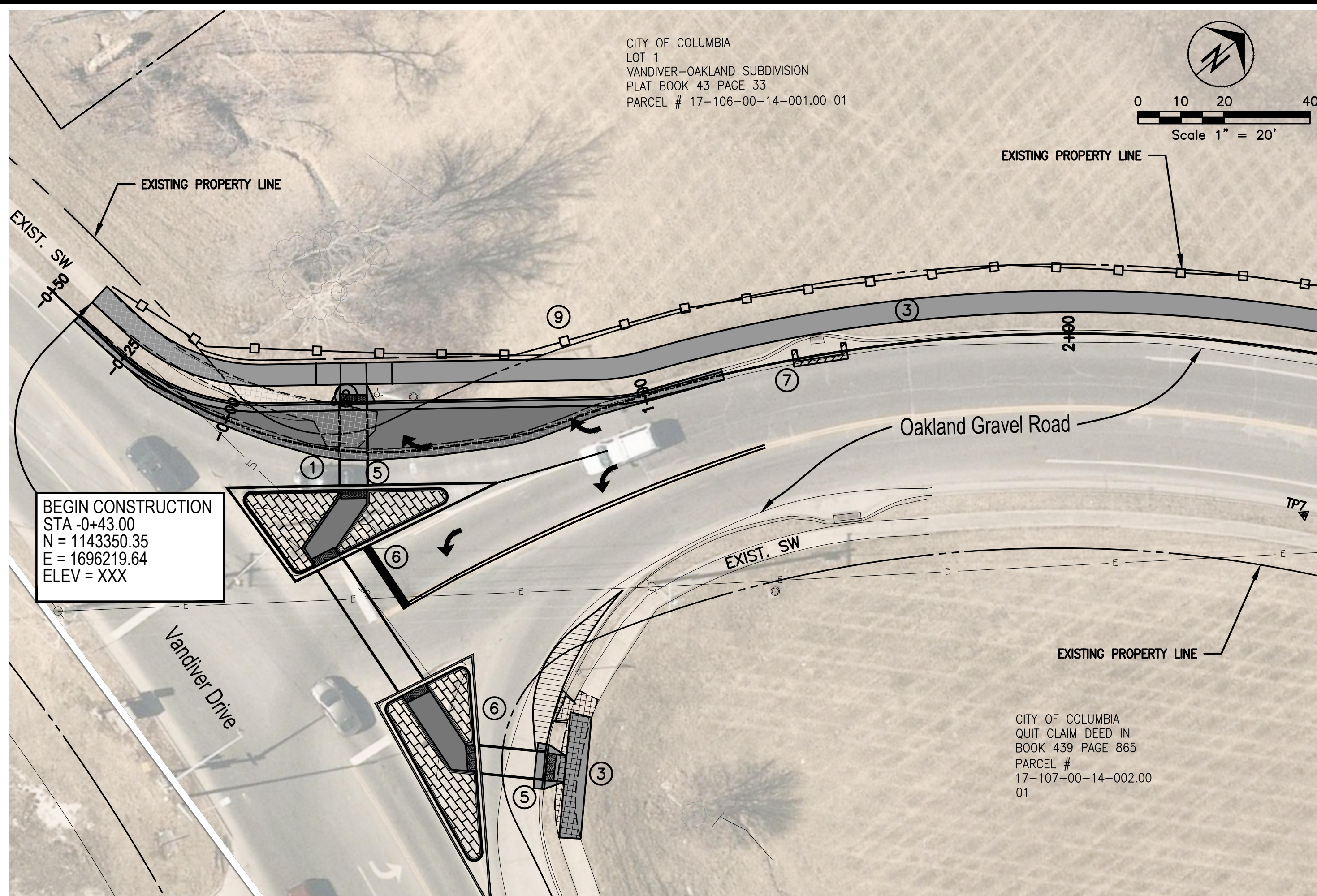
NOTES: (NOT TO SCALE)

1. SIDEWALK SHALL BE 4" THICK MODOT PAVEMENT CONCRETE.
2. INSTALL 1/2" EXPANSION JOINTS AT INTERSECTIONS, RAMPS, STRUCTURES, DRIVEWAY APPROACHES, OR EVERY 100'.
3. INSTALL TRANSVERSE SAW JOINTS AT SPACING EQUAL TO SIDEWALK WIDTH.
4. STANDARD SIDEWALK PLACEMENT IS 12" FROM RIGHT OF WAY LINE.
5. NO STEEL TO BE PLACED THROUGH EXPANSION JOINT.
6. SIDEWALK CROSS SLOPE SHALL NOT EXCEED 2.00%.
7. DAMAGED SIDEWALK MUST BE PINNED TO EXISTING SIDEWALK.
8. WWR OR REBAR SHALL BE ACCURATELY PLACED AND FIRMLY HELD IN PLACE DURING CONCRETE PLACEMENT BY APPROVED METHODS, SEE SECTION 238.9.

ALL TREES, BUSHES AND SHRUBS LOCATED WITHIN THE GRADING LIMITS CAN BE REMOVED ONLY IF NECESSARY TO FACILITATE CONSTRUCTION. CHECK THE PLAN SHEETS FOR TREES AND SHRUBS SPECIFICALLY NOTED EITHER "DO NOT DISTURB" OR MARKED WITH A BOLD "X" TO BE REMOVED. THE CONTRACTOR SHALL USE CARE TO MINIMIZE THE IMPACT TO AND THE REMOVAL OF TREES. THE CONSTRUCTION INSPECTOR SHALL VERIFY ALL REMOVALS.

CONTRACTOR TO VERIFY UNDERGROUND UTILITIES DEPTH & LOCATION

- ① SAWCUT, REMOVE & REPLACE EXISTING CURB & GUTTER
- ② SAWCUT & REMOVE EXISTING SIDEWALK, RAMP AND LANDING
- ③ CONSTRUCT PCC SIDEWALK, RAMP & LANDING PER CROSS SECTIONS, DETAIL & PLAN DIMENSIONS
- ④ REMOVE & RECONSTRUCT PCC RESIDENTIAL DRIVEWAY PER CROSS SECTION, DETAIL AND PLAN DIMENSIONS
- ⑤ INSTALL DETECTABLE WARNING PANEL PER PLAN & DETAIL
- ⑥ SEE ISLAND RECONSTRUCTION PLAN, APS INSTALLATION, STRIPING PLAN & DETAILS IN SEPARATE SHEETS
- ⑦ INSTALL INLET PROTECTION (GUTTER BUDDIES)
- ⑧ REMOVE EXISTING CONCRETE PAD
- ⑨ INSTALL SILT FENCE PER PLAN AND DETAIL



MATCHLINE 2+50

MATCHLINE 8+00

Revision	By	Date	No.

Oakland Gravel Road Sidewalk
Plan & Profile - Sta. 0+10 to Sta. 8+00

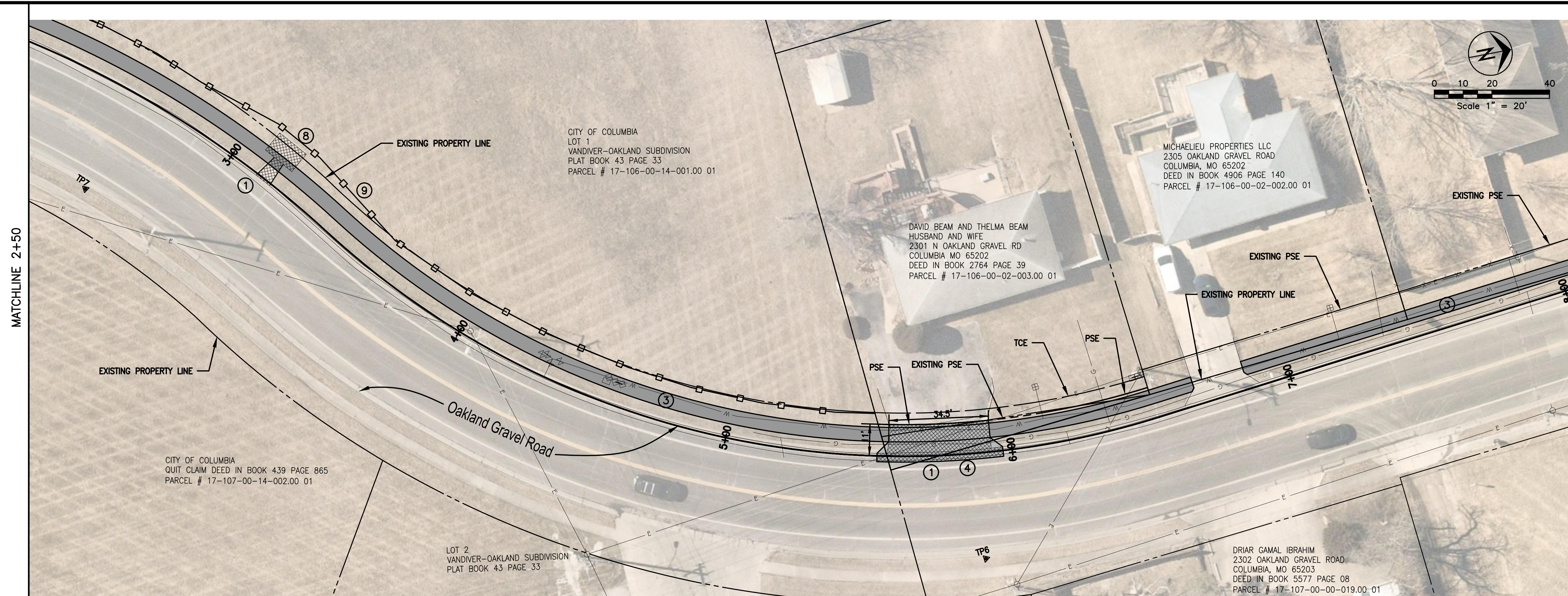
City of Columbia, Missouri

Department of Public Works

Shane Steven Creech
Registered Professional Engineer
PE-2007011061

File No.	00802
Scale:	As Shown
Date:	7/15/2022
Des.	A.N.H.
Dwn.	T.L.W.
Chk.	AAA

Sheet
1 of 3



MATCHLINE 2+50

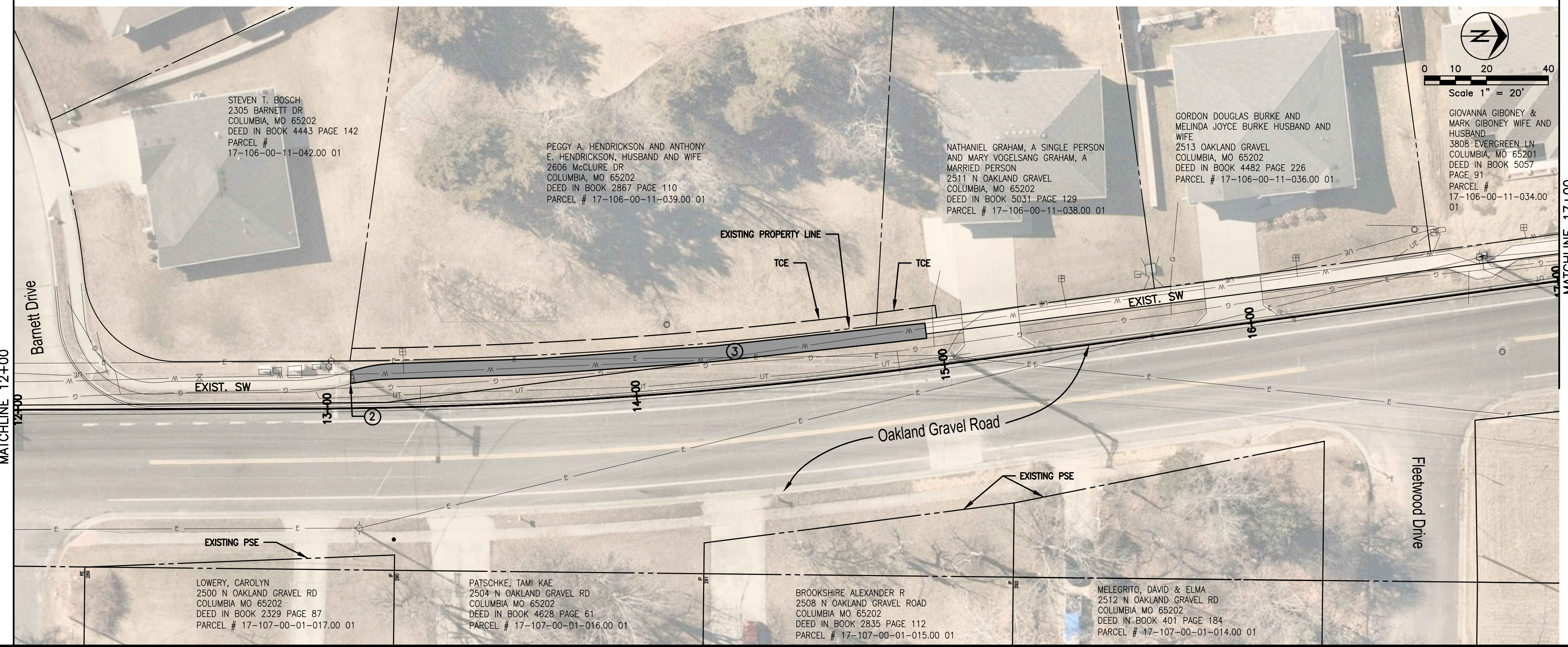
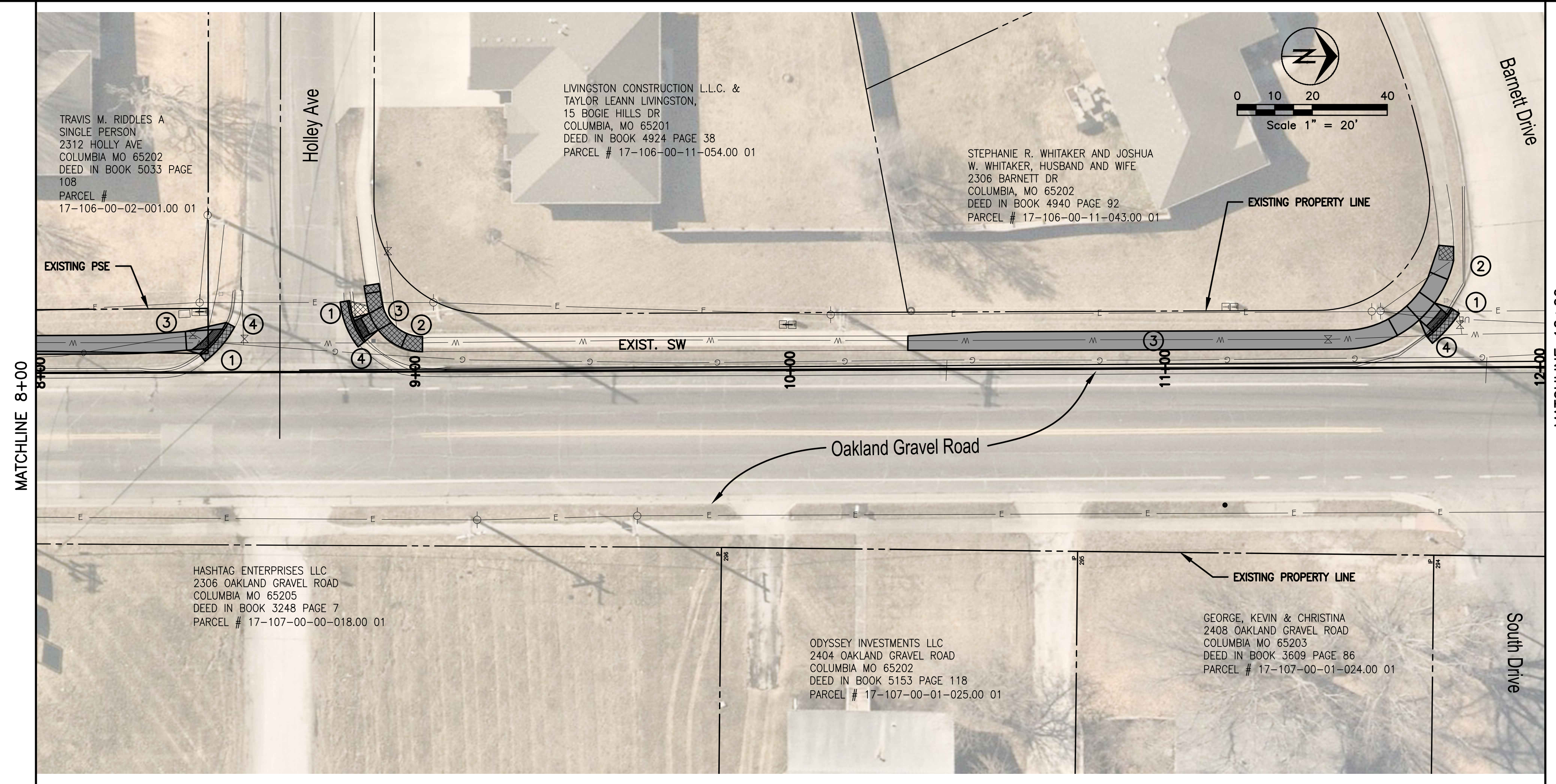
MATCHLINE 8+00

c:\vadderoj\sidewalk\lookand\gravel\road\sidewalk\design\lookand\gravel\road\condner-efr\h\cra.dwg

- ① SAWCUT, REMOVE & REPLACE EXISTING CURB & GUTTER
- ② SAWCUT & REMOVE EXISTING SIDEWALK, RAMP AND LANDING
- ③ CONSTRUCT PCC SIDEWALK, RAMP & LANDING PER CROSS SECTIONS, DETAIL & PLAN DIMENSIONS
- ④ INSTALL DETECTABLE WARNING PANEL PER PLAN & DETAIL.

ALL TREES, BUSHES AND SHRUBS LOCATED WITHIN THE GRADING LIMITS CAN BE REMOVED ONLY IF NECESSARY TO FACILITATE CONSTRUCTION. CHECK THE PLAN SHEETS FOR TREES AND SHRUBS SPECIFICALLY NOTED EITHER "DO NOT DISTURB" OR MARKED WITH A BOLD "X" TO BE REMOVED. THE CONTRACTOR SHALL USE CARE TO MINIMIZE THE IMPACT TO AND THE REMOVAL OF TREES. THE CONSTRUCTION INSPECTOR SHALL VERIFY ALL REMOVALS.

CONTRACTOR TO VERIFY UNDERGROUND UTILITIES DEPTH & LOCATION



Revision	By	Date	No.

Oakland Gravel Road Sidewalk

Plan & Profile - Sta. 8+00 to Sta. 17+00

City of Columbia, Missouri
Department of Public Works

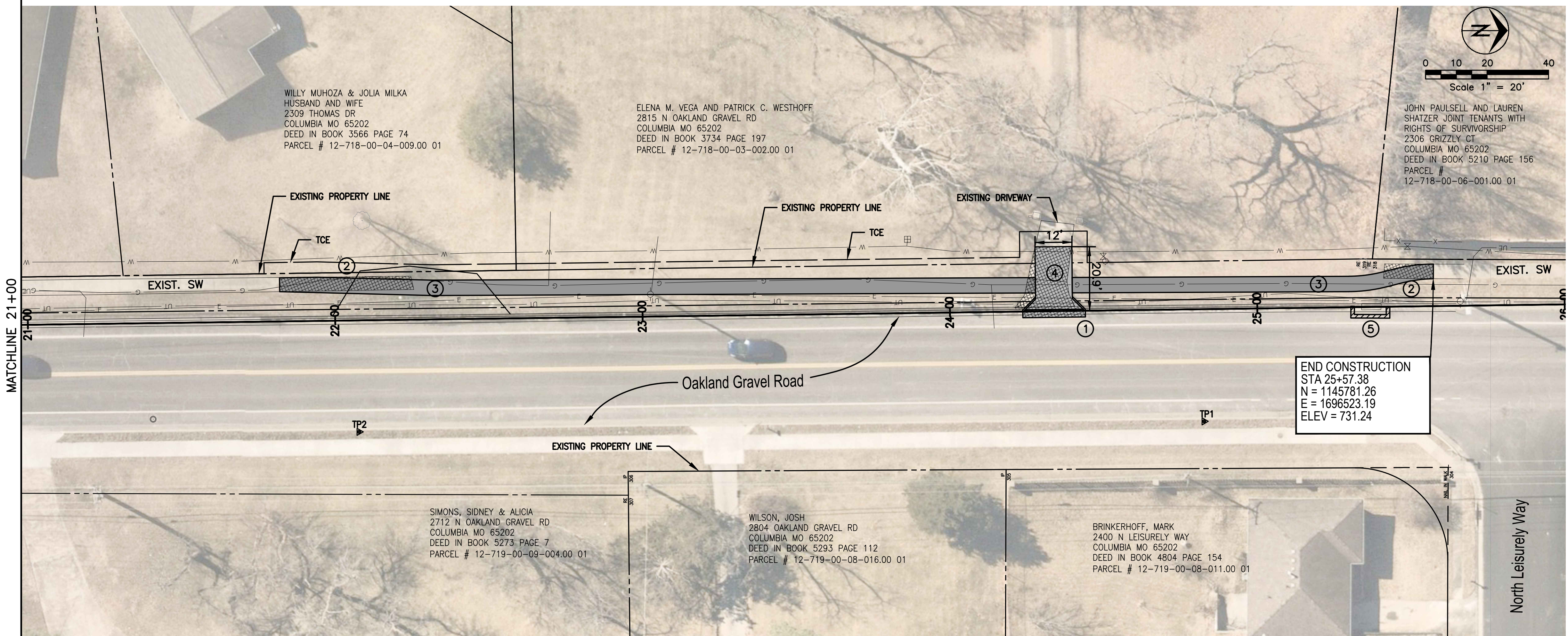
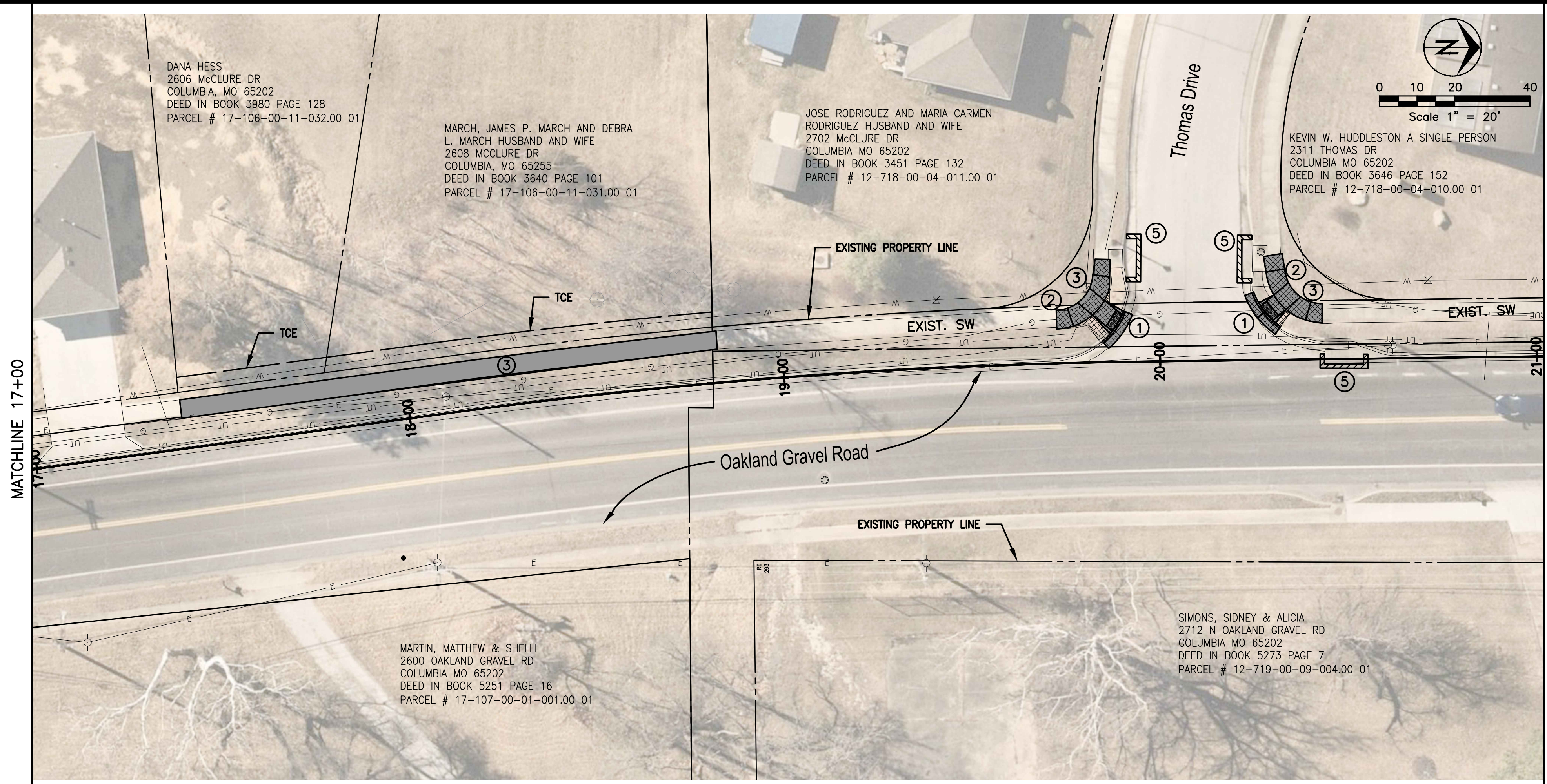
Shane Steven Creech Registered Professional Engineer PE-2007011061	
File No.	00802
Scale:	As Shown
Date:	7/15/2022
Des.	A.N.H.
Dwn.	T.L.W.
Chk.	AAA
Sheet 2 of 3	

e:\cadd\proj\sidewalk\lookand\gravel\road\sidewalk\design\lookand\gravel\road\condner-efr3\fr3\cna.dwg

- ① SAWCUT, REMOVE & REPLACE EXISTING CURB & GUTTER
- ② SAWCUT & REMOVE EXISTING SIDEWALK
- ③ CONSTRUCT PCC SIDEWALK PER CROSS SECTIONS, DETAIL & PLAN DIMENSIONS
- ④ REMOVE & RECONSTRUCT PCC RESIDENTIAL DRIVEWAY PER CROSS SECTION, DETAIL AND PLAN DIMENSIONS
- ⑤ INSTALL INLET PROTECTION (GUTTER BUDDIES).

ALL TREES, BUSHES AND SHRUBS LOCATED WITHIN THE GRADING LIMITS CAN BE REMOVED ONLY IF NECESSARY TO FACILITATE CONSTRUCTION. CHECK THE PLAN SHEETS FOR TREES AND SHRUBS SPECIFICALLY NOTED EITHER "DO NOT DISTURB" OR MARKED WITH A BOLD "X" TO BE REMOVED. THE CONTRACTOR SHALL USE CARE TO MINIMIZE THE IMPACT TO AND THE REMOVAL OF TREES. THE CONSTRUCTION INSPECTOR SHALL VERIFY ALL REMOVALS.

CONTRACTOR TO VERIFY UNDERGROUND UTILITIES DEPTH & LOCATION



Revision	By	Date	No.

Oakland Gravel Road Sidewalk

Plan & Profile - Sta. 17+00 to Sta. 25+57.38

City of Columbia, Missouri
Department of Public Works

Shane Steven Creech Registered Professional Engineer PE-2007011061
File No. 00802
Scale: As Shown
Date: 7/15/2022
Des. A.N.H.
Dwn. T.L.W.
Chk. AAA
Sheet 3 of 3