

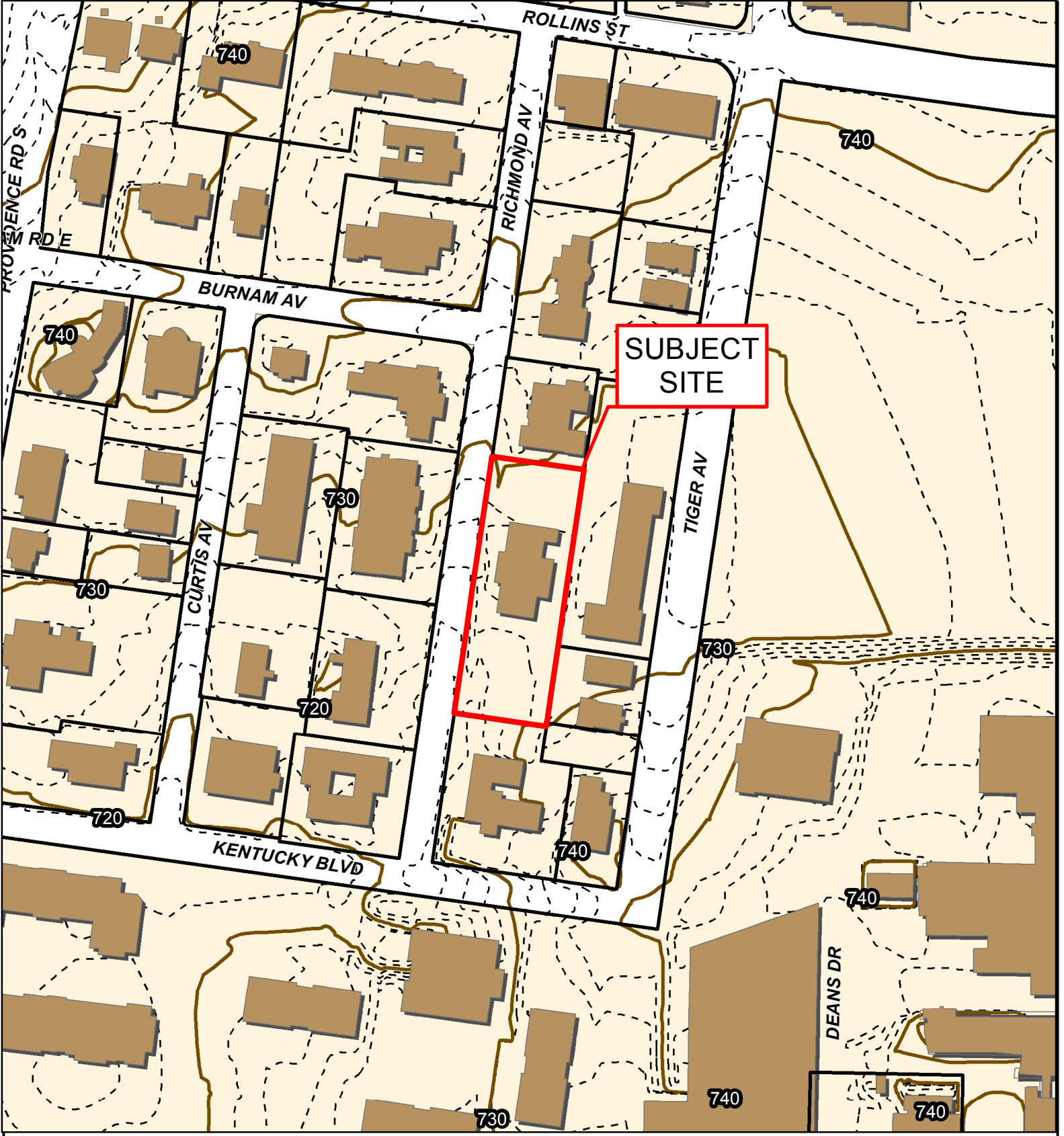
2015 Orthophoto Source: Boone County Assessor

# Case #16-81: Zeta Tau Alpha Sanitary Sewer Easement Vacation



- City of Columbia Zoning
- Parcels



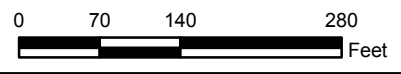


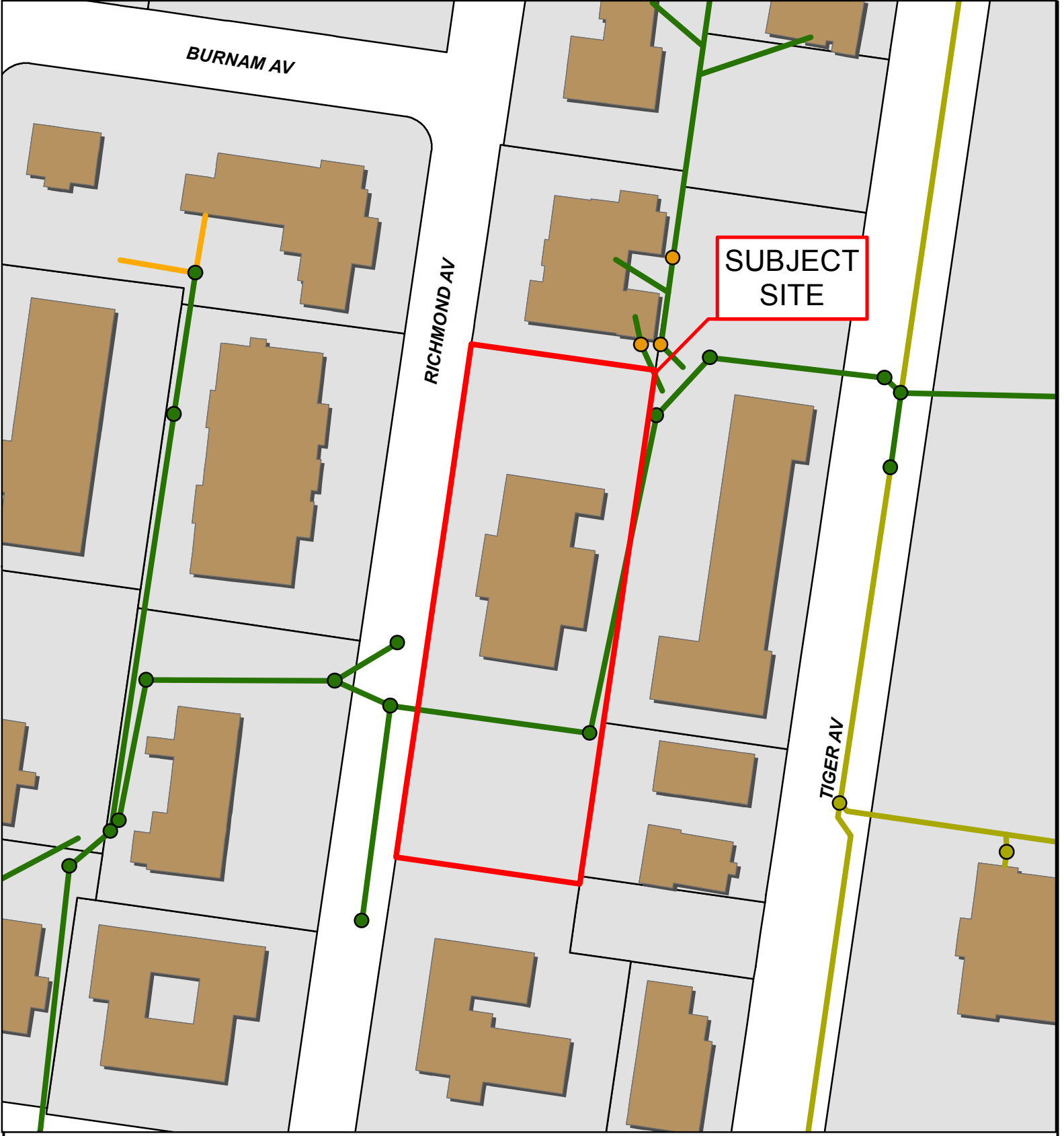
# Case #16-81: Zeta Tau Alpha Sanitary Sewer Easement Vacation



- 10 Foot Contour Lines
- 2 Foot Contour Lines
- Parcels
- Building Footprint
- 100-Year Flood Plain





Hillshade Data: Boone County GIS Office    Imagery: Boone County Assessor's Office, Sanborn Map Company  
 Parcel Data Source: Boone County Assessor    Created by The City of Columbia - Community Development Department





## Case #16-81: Zeta Tau Alpha Sanitary Sewer Easement Vacation



- |   |                            |   |                        |   |                    |
|---|----------------------------|---|------------------------|---|--------------------|
|  | City Sanitary Structure    |  | City Sanitary Line     |  | Building Footprint |
|  | Private Sanitary Structure |  | Private Sanitary Line  |  | Parcels            |
|  | UMC                        |  | Univ. of Missouri Line |   |                    |



Hillshade Data: Boone County GIS Office  
Parcel Data Source: Boone County Assessor

Imagery: Boone County Assessor's Office, Sanborn Map Company  
Created by The City of Columbia - Community Development Department

