

QUANTITIES

ITEM DESCRIPTION	UNITS	QTY
Mobilization	LS	1
Traffic Control	LS	1
Construction Staking	LS	1
Sawcut & Removal of Exist. Curb & Gutter	LF	75
Sawcut & Removal of Exist. Sidewalk	SY	46
2'-6" Concrete Curb & Gutter	LF	75
6" PCC Sidewalk with Integral Curb & ADA Ramps	SF	448
Detectable Warning Panels	SF	72
Type "C" Concrete Base	CY	1.76
8 ft. Top Mount Post (Powder Coated Black)	EA	4
Audible Push Button with Mountings	EA	8
Countdown Pedestrian Signal, Type 1S	EA	8
APS Central Control Unit	EA	1
Conduit, 3 inch, Trench	LF	14
Conduit, 3 inch, Pushed	LF	27
Cable, 2c#12	LF	161
Cable, 5c#12	LF	161
Permanent Signage With Mountings	SF	8
Pavement Marking- 6" White Marking Paint	LF	703
Gutter Buddies	EA	3
Linear Grading	LF	80
Seeding and Mulching	LS	1

POWER SUPPLY IS LOCATED AT THE NORTHWEST CORNER OF RTE.763 AND SMILEY LANE.

NOTE:
WHILE INSTALLING THE NEW SIGNAL POST, ALWAYS AVOID EXISTING RCP STORMWATER PIPES. IF DAMAGED, IT IS THE RESPONSIBILITY OF THE CONTRACTOR TO REPAIR AT THEIR OWN COST.

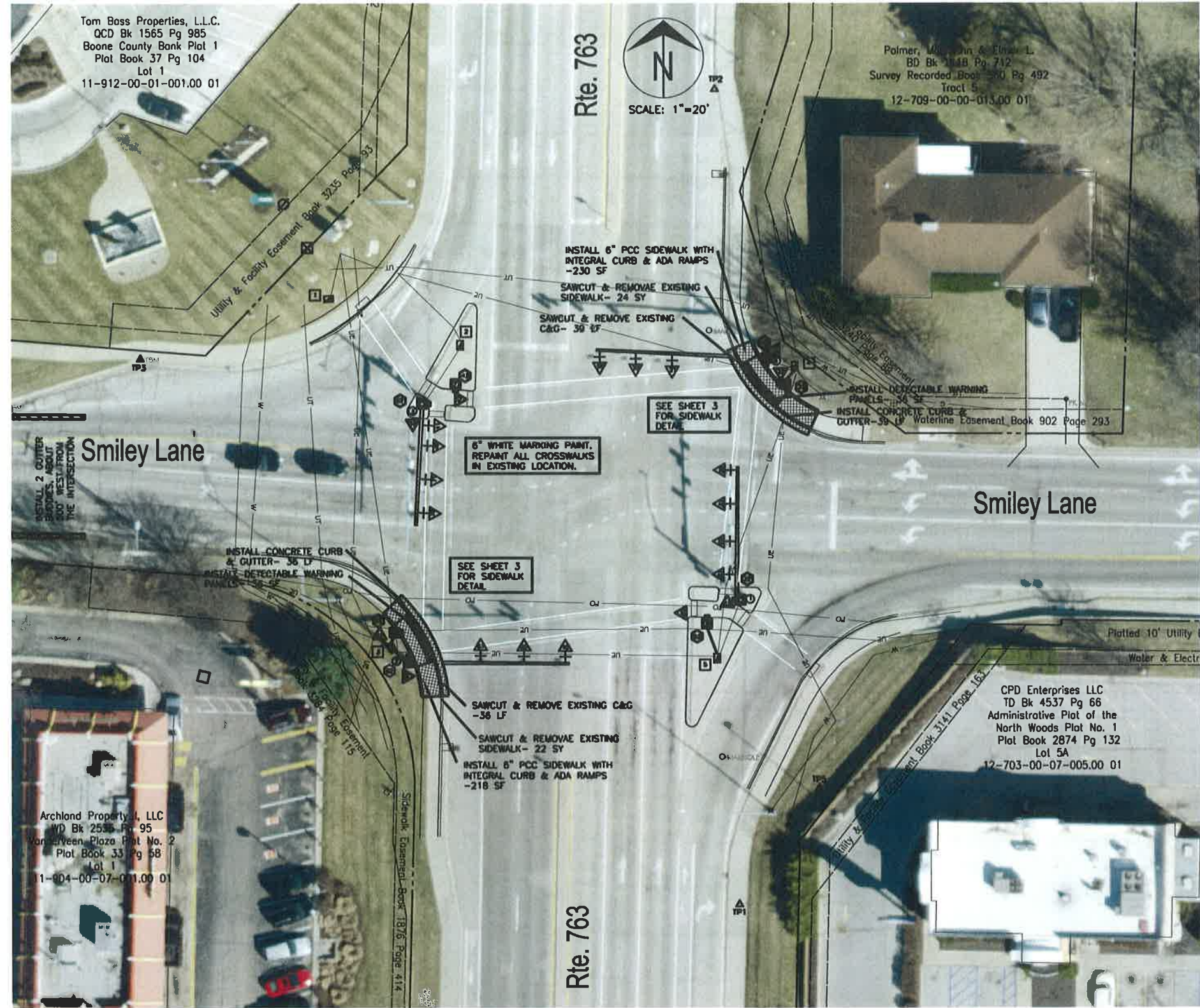
APS SIGNAL POST LOCATIONS

SIGNAL	POLE	NORTHING	EASTING
①	EXISTING	1150484.20	1690555.91
②	EXISTING	1150463.61	1690447.32
③	EXISTING	1150549.62	1690451.88
④	EXISTING	1150564.70	1690565.75
⑤	8' TALL	1150476.48	1690446.11
⑥	8' TALL	1150473.51	1690442.62
⑦	8' TALL	1150556.19	1690462.95
⑧	8' TALL	1150556.01	1690572.20

EXIST. PULL BOX LOCATIONS

SIGNAL	NORTHING	EASTING
1	1150584.48	1690420.70
2	1150569.10	1690464.45
3	1150468.46	1690441.82
4	1150562.05	1690575.31
5	1150464.94	1690549.41

NOTE:
CROSSWALK MARKINGS SHALL BE 4 FT MINIMUM FROM STOP BARS. CROSSWALKS SHALL BE 6 FT WIDE. EXISTING CROSSWALK MARKINGS SHALL BE REMOVED PRIOR TO INSTALLATION OF NEW PAVEMENT MARKING PAINT.



PEDESTRIAN SIGNAL PLAN

Revision	By	Date	No.

Rte. 763 & Smiley Lane APS
Plan Sheet

City of Columbia, Missouri
Department of Public Works

David Alan Nichols
Registered Professional Engineer
E-34312
File No. C00551
Scale: 1" = 20'
Date: 08/26/2020
Des. A.M.M.
Den. A.M.M.
Chk. A.A.A.

C:\Users\james\OneDrive\Documents\Projects\763_Smiley\763_Smiley.dwg