


SUBJECT SITE

U-C Benton Stephens Urban Conservation District


Case #16-142: Landmark Hospital O-P Rezoning & Development Plan Revision



City of Columbia Zoning

U-C Benton Stephens Urban Conservation District

Parcels




Hillshade Data: Boone County GIS Office

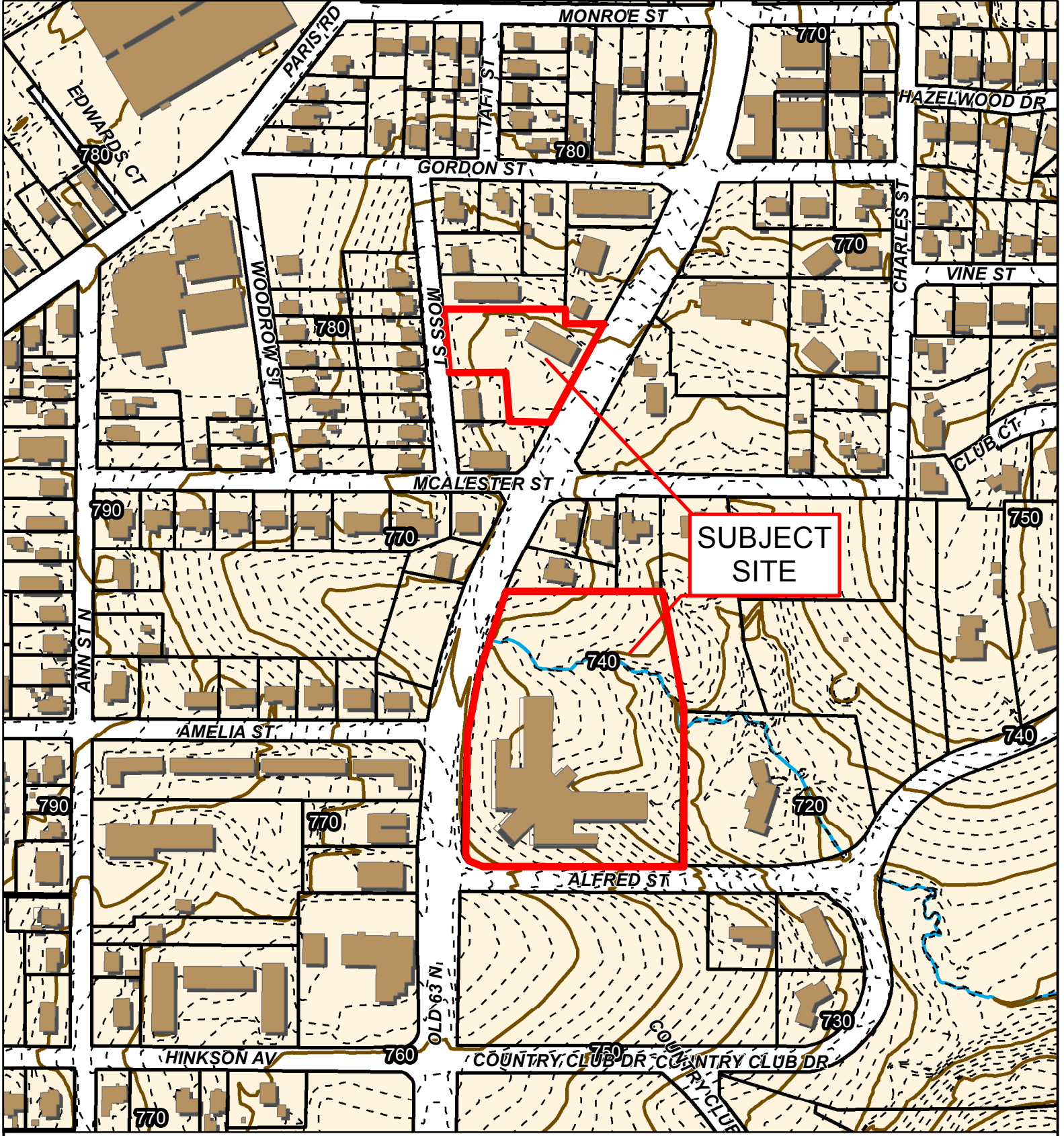
2015 Imagery: Boone County Assessor's Office

Parcel Data Source: Boone County Assessor

Created by The City of Columbia - Community Development Department

0 105 210 420
Feet



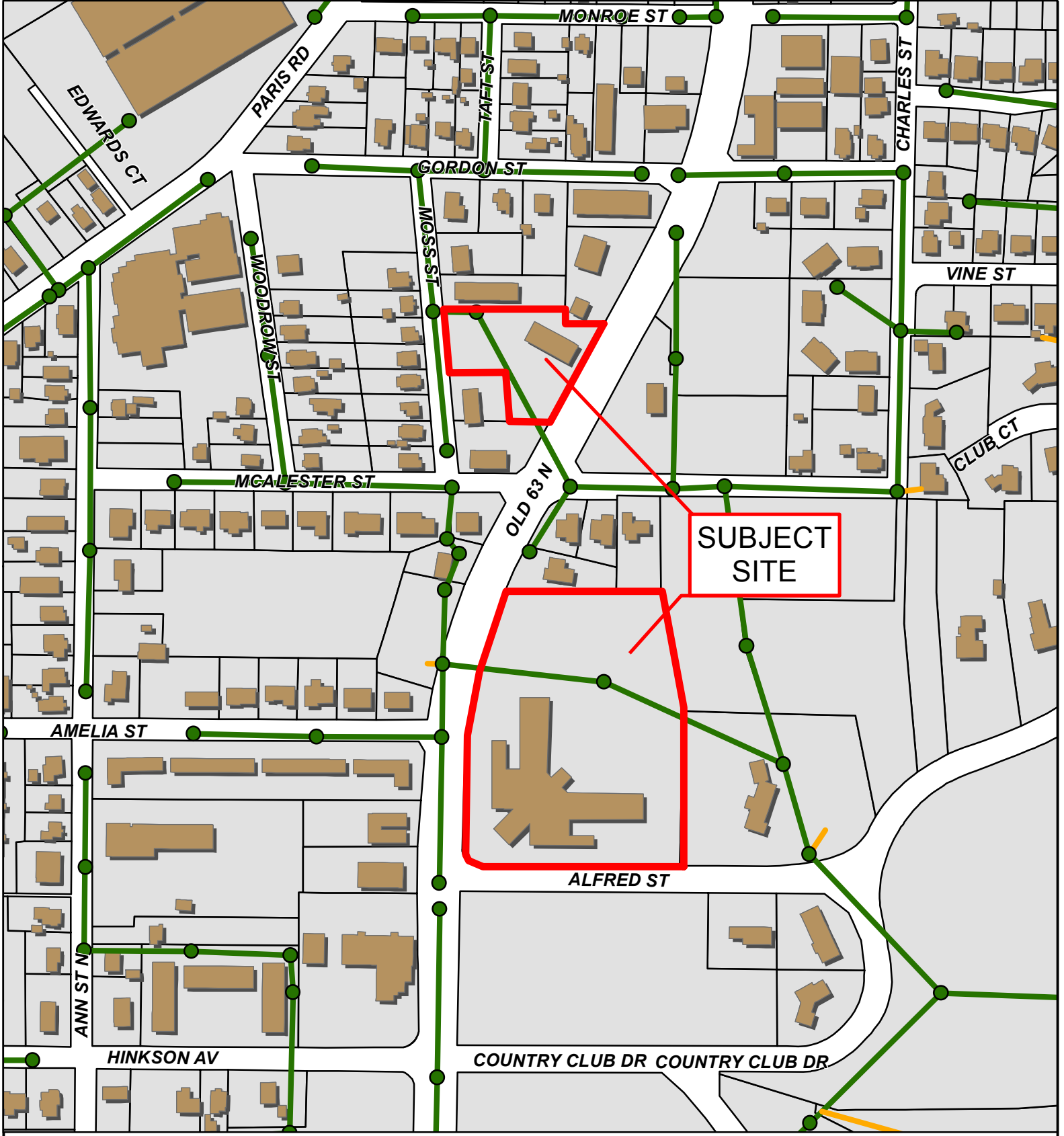


Case #16-142: Landmark Hospital O-P Rezoning & Development Plan Revision



- 10 Foot Contour Lines
- 2 Foot Contour Lines
- Parcels
- Building Footprint
- 100-Year Flood Plain





Case #16-142: Landmark Hospital O-P Rezoning & Development Plan Revision



- City Sanitary Structure
- City Sanitary Line
- Building Footprint
- Private Sanitary Line
- Parcels

