

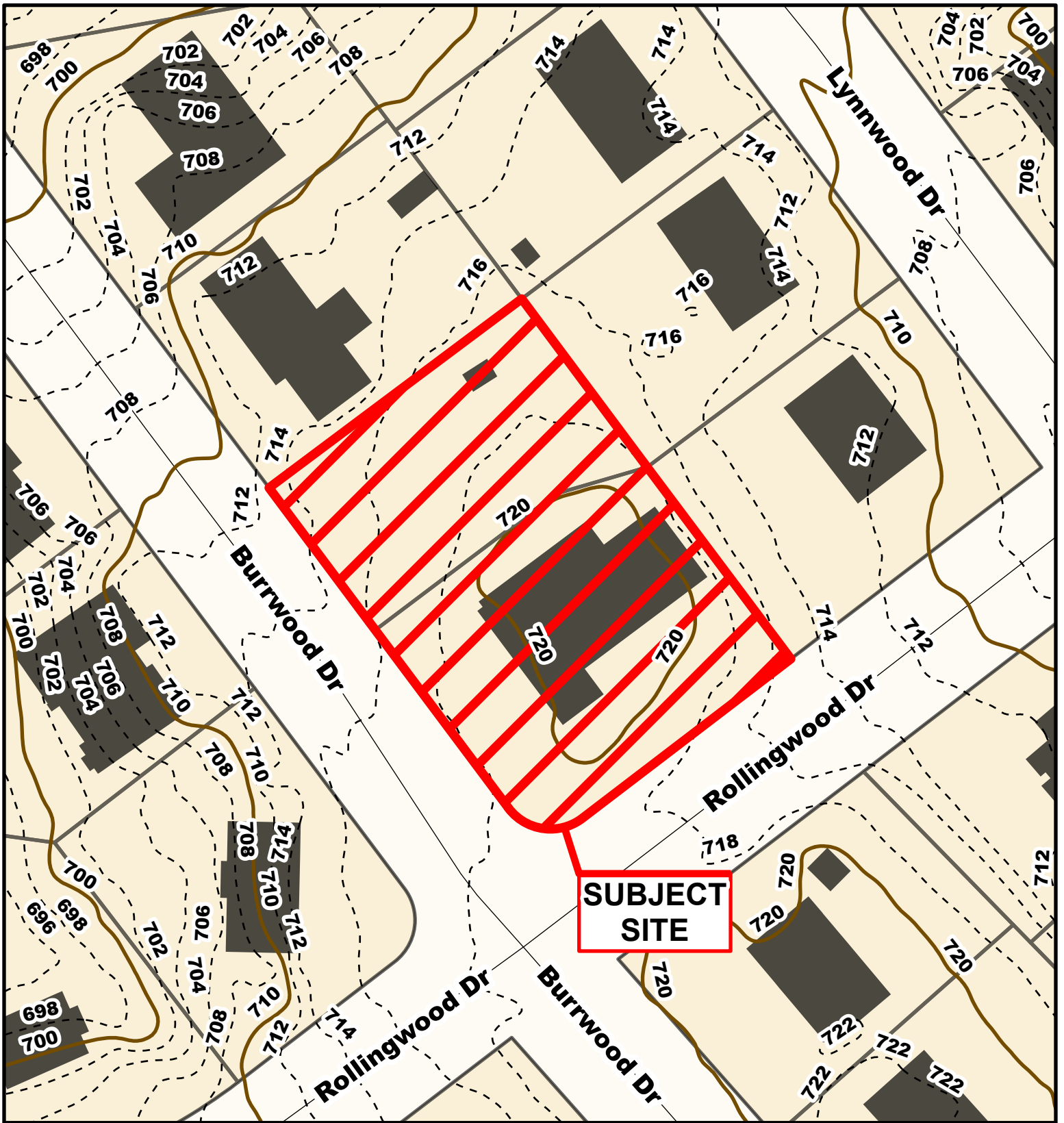


Case # 256-2024 - 909 Rollingwood Drive Final Plat



City Zoning
 Parcels





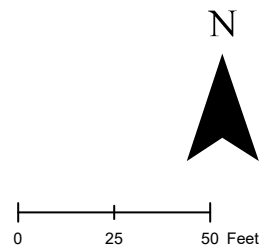
Case # 256-2024 - 909 Rollingwood Drive

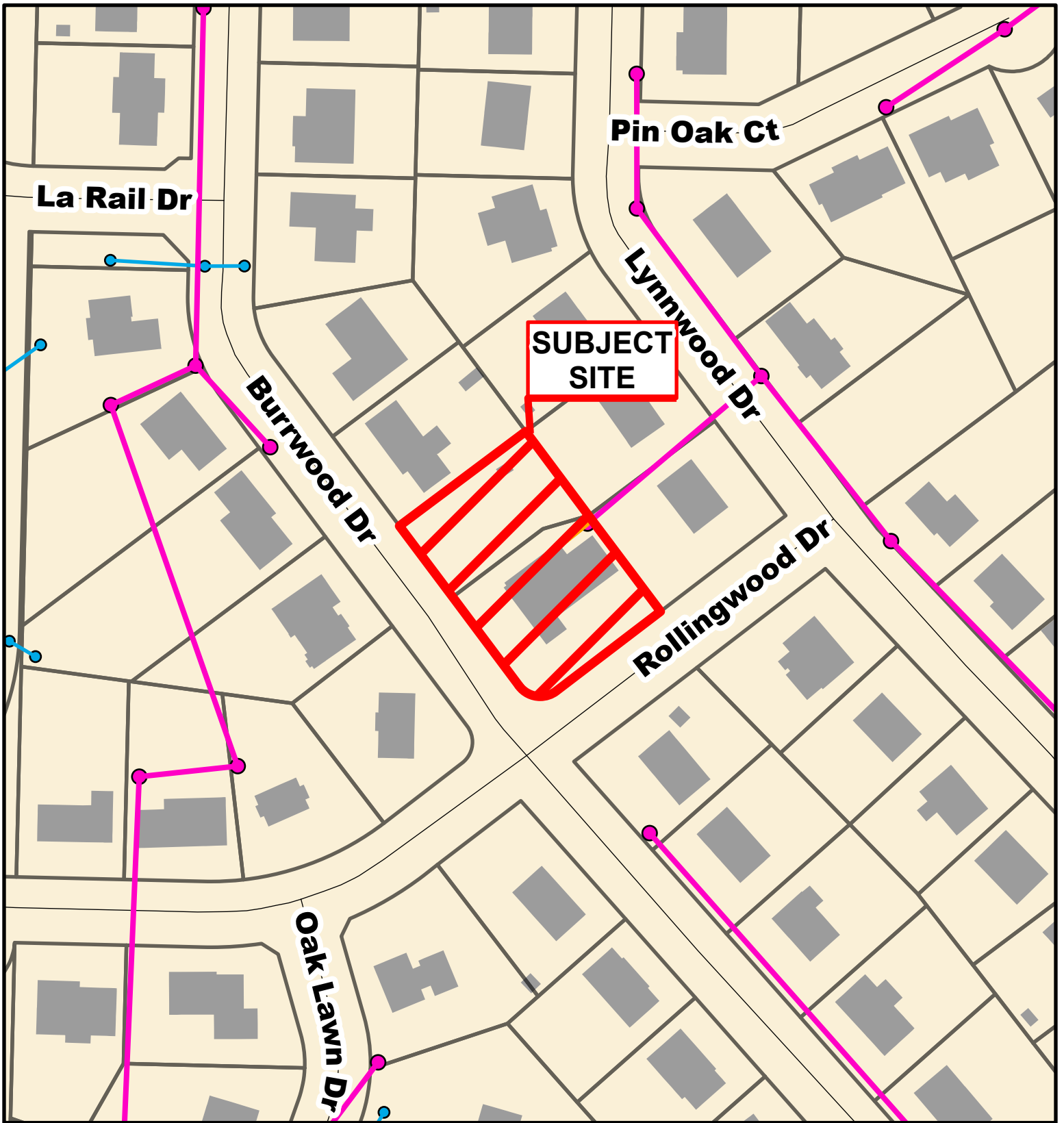
Final Plat



Parcel Data Source: Boone County Assessor
Created by The City of Columbia - Community Development Department

- 10 Foot Contour Lines
- 2 Foot Contour Lines
- Parcels





Case # 256-2024 - 909 Rollingwood Drive
Final Plat



- City Sanitary Line
- City Storm Lines
- Private Sanitary Line
- Parcels

