



58015 sq ft
 + 484762 sq ft
 542775 sq ft

TOTAL CLIMAX FOREST: 542775 Sq Ft OR 12.46 ACRES

TOTAL PRESERVED AREA:

31383 Sq Ft
+ 62055 Sq Ft
+ 45529 Sq Ft
138967 Sq Ft OR 3.19 AC (25.6%)

SEE SHEET 2 FOR LOCATION OF PRESERVED AREAS.

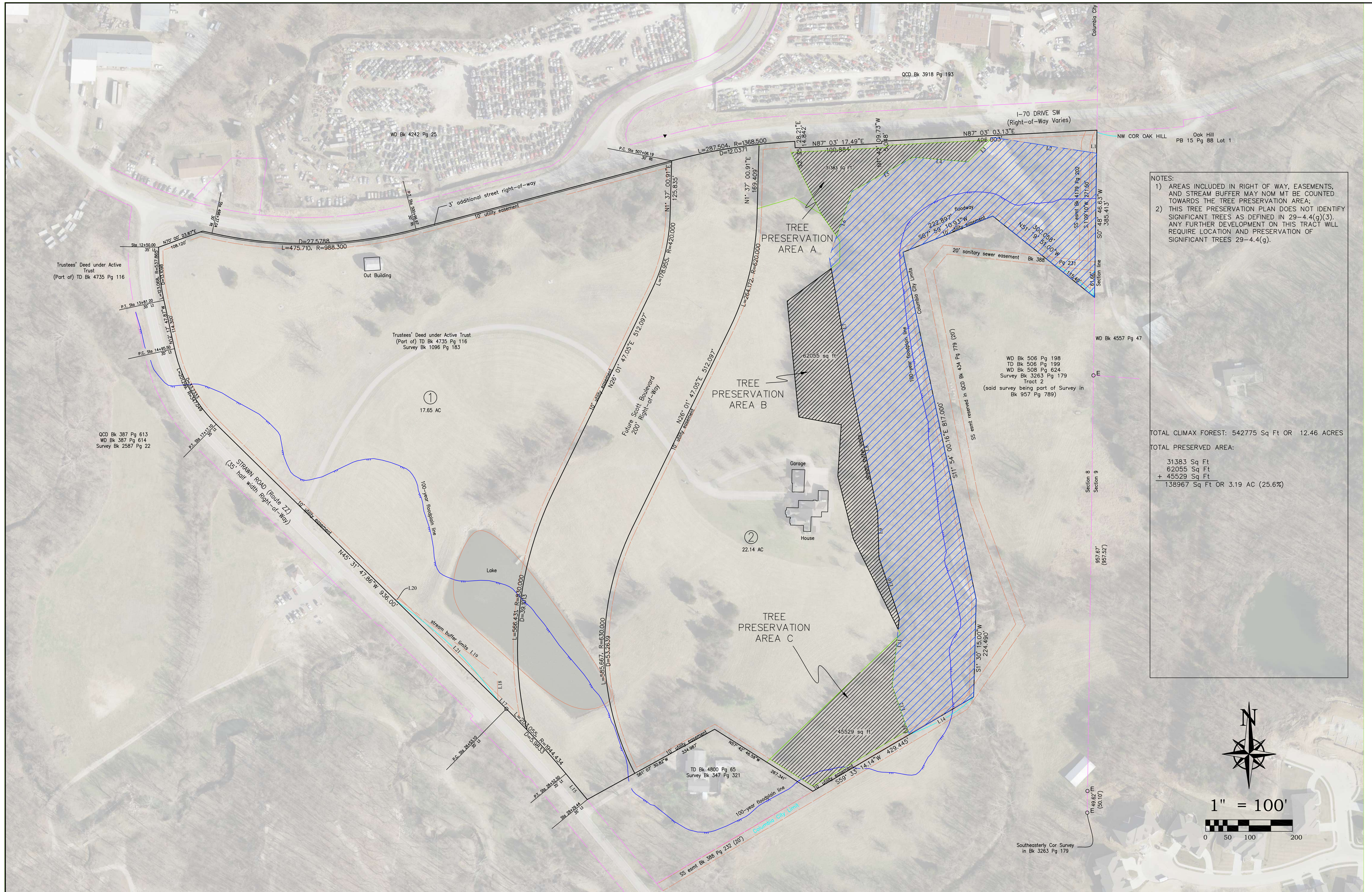


No.	Date	By	Revision

STRAWN ROAD SUBDIVISION TREE PRESERVATION PLAN

City of Columbia, Missouri
COMMUNITY DEVELOPMENT
DEPARTMENT

File No.	
Scale:	1" = 100'
Date:	7 MAR 2018
Des.:	C.H.
Dwn.:	DCB
Chk.:	X.X.X.



NOTES:
 1) AREAS INCLUDED IN RIGHT OF WAY, EASEMENTS, AND STREAM BUFFER MAY NOT BE COUNTED TOWARDS THE TREE PRESERVATION AREA;
 2) THIS TREE PRESERVATION PLAN DOES NOT IDENTIFY SIGNIFICANT TREES AS DEFINED IN 29-4.4(g)(3). ANY FURTHER DEVELOPMENT ON THIS TRACT WILL REQUIRE LOCATION AND PRESERVATION OF SIGNIFICANT TREES 29-4.4(g).

TOTAL CLIMAX FOREST: 542775 Sq Ft OR 12.46 ACRES
 TOTAL PRESERVED AREA:
 31383 Sq Ft
 62055 Sq Ft
 + 45529 Sq Ft
 138967 Sq Ft OR 3.19 AC (25.6%)

No.	Date	By	Revision

STRAWN ROAD SUBDIVISION TREE PRESERVATION PLAN

City of Columbia, Missouri
 COMMUNITY DEVELOPMENT
 DEPARTMENT

File No. _____
 Scale: 1" = 100'
 Date: 7 MAR 2018
 Des. C.H.
 Dwn. DCB
 Chk. X.X.X.