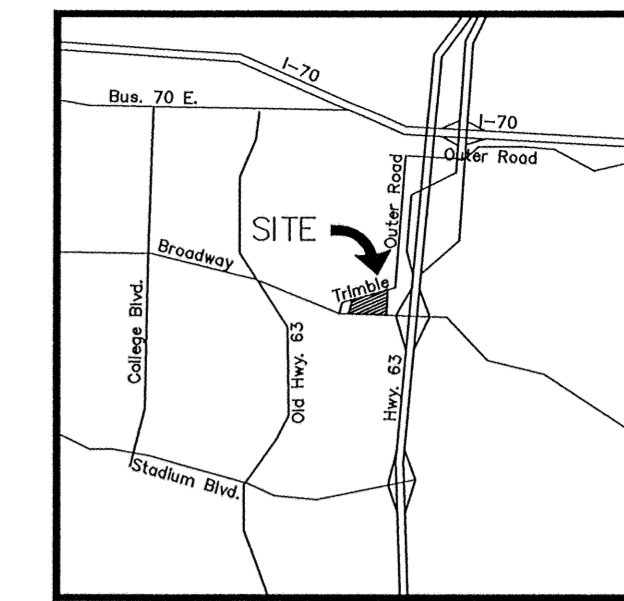
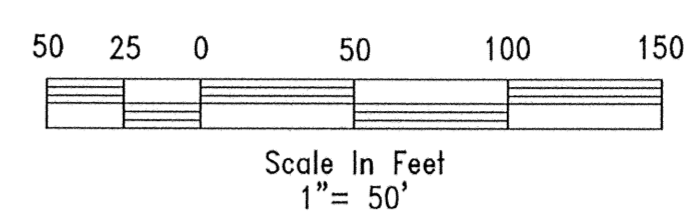


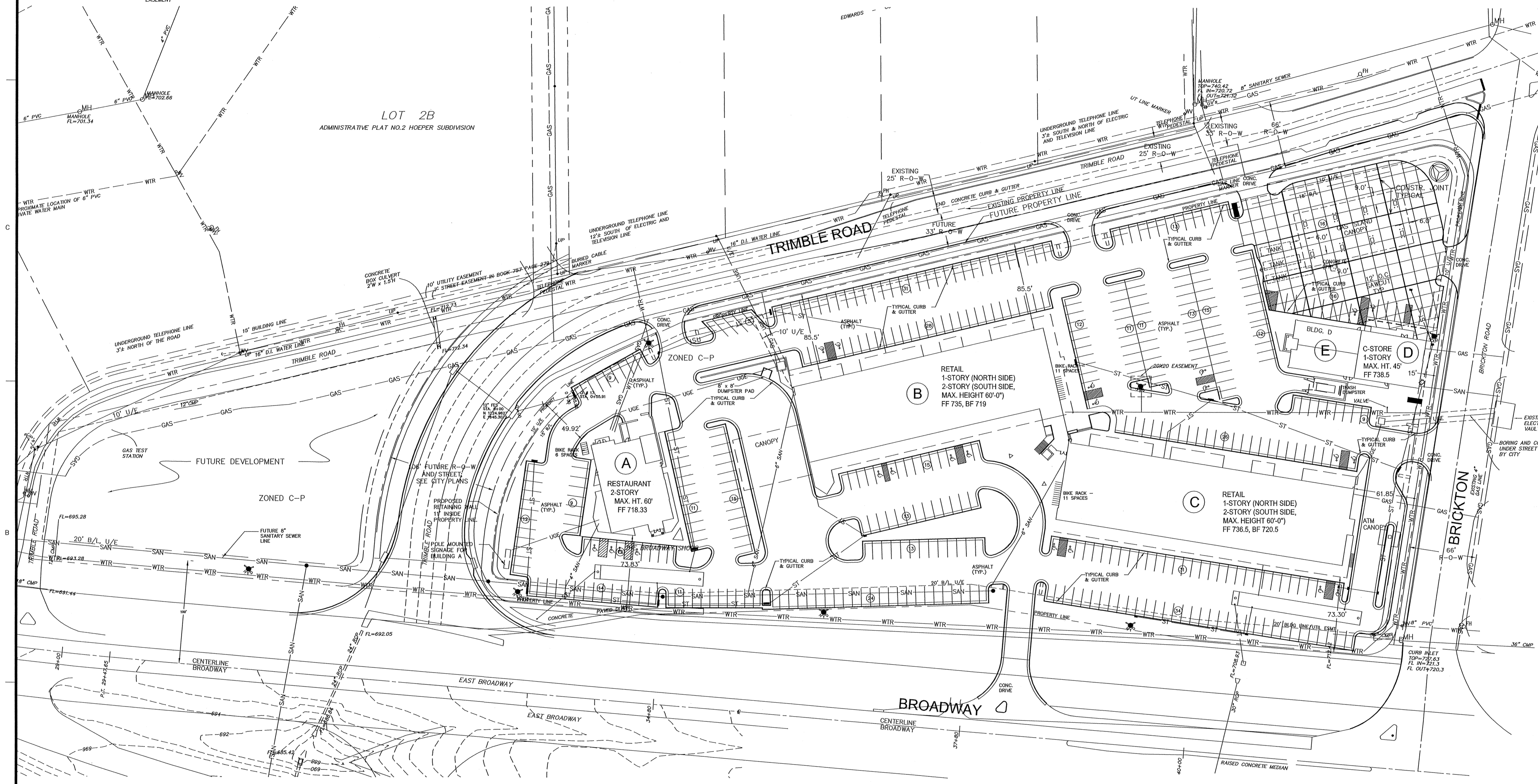
The Broadway Shops C-P Development Plan

EXISTING	PROPOSED
	WATER METER
	WATER VALVE
	OVERHEAD TELEPHONE
	UNDERGROUND TELEPHONE
	SANITARY SEWER
	UNDERGROUND GAS
	OVERHEAD CABLE
	OVERHEAD POWER
	UNDERGROUND POWER
	STORM SEWER
	WATER LINE
	EROSION CONTROL FENCE
	CONTOUR
	PROPERTY LINE
	EASEMENT



Architect
Berger Devine Yaeger, Inc.
3700 BROADWAY, SUITE
300 KANSAS CITY, MISSOURI
64111
Tel: (816) 561-2761
Fax: (816) 561-9222
www.bdyinc.com

Civil Engineer
Berger Devine Yaeger, Inc.
3700 BROADWAY, SUITE
300 KANSAS CITY, MISSOURI
64111
Tel: (816) 561-2761
Fax: (816) 561-9222
www.bdyinc.com



The Broadway Shops, LLC.
P.O. Box 1037
Columbia, Missouri 65205

BENCH MARK

BM - TOP OF FIRE HYDRANT LOCATED 1000' NORTH OF TRIMBLE ROAD AND BRICKTON ROAD (NOW DESTROYED) ELEVATION=732.64

TBM - EAST RIM OF MANHOLE LOCATED AT THE NE CORNER OF TRIMBLE ROAD AND BRICKTON ROAD. ELEVATION=740.15

TBM - EAST ZERO OF STAMPED STATION 34+00 ON NORTH EDGE OF PAVEMENT ON EAST BROADWAY ELEVATION=704.92

EQUALS
MO DOT BM 8-01: MO DOT ELEVATION=700.74

THESE LOTS ARE NOT LOCATED IN THE 100-YEAR FLOOD PLAIN AS DEFINED BY CITY ORDINANCE.

PROPERTY DATA			
BUILDING	AREA (S.F.)	PARKING	SPACES
A	6,600	REQUIRED	371
B	35,000	PROVIDED	463
C	40,100		
D	2,970		
E	2,900		
TOTAL BUILDING AREA		GREEN SPACE	AREA (S.F.)
87,570		TOTAL PROPERTY AREA	318,907
		REQUIRED (15%)	47,836
		PROVIDED (16%)	48,859

SIGN DESCRIPTIONS

The Broadway Shops will comply with the signage requirements of Chapter 23.

Freestanding Master Signs - A maximum of three (3) freestanding master signs (one per adjacent street right of way). Said freestanding signs shall be designed to complement the architecture of the Broadway Shops, in similar fashion to the signs currently existing in our other two Columbia Shopping Centers - the Forum Shopping Center and the NIFONG Shopping Center. All said signage shall comply with Section 23-14 and Section 23-25 (i) of the City of Columbia Code of Ordinances. The maximum square footage of the sign surface area will be 500 per sign and the maximum height will be thirty feet (30') per sign.

Service Station Signs - The proposed convenience store shown at the Northeast corner of the submitted Site Plan shall contain the following signs, in accordance with Section 23-23 and Section 23-25 of the City of Columbia Code of Ordinances:
- A freestanding sign indicating the name and logo of the company.
- An on-premises freestanding sign indicating services available.

Directional Signs - In accordance with Section 23-22 (b) of the City of Columbia Code of Ordinances, on-premises directional signs shall be located at each automotive entrance and exit.

Wall Signs - All such signs shall comply with the requirements for C-3 Zoning of the City of Columbia Zoning Ordinance.

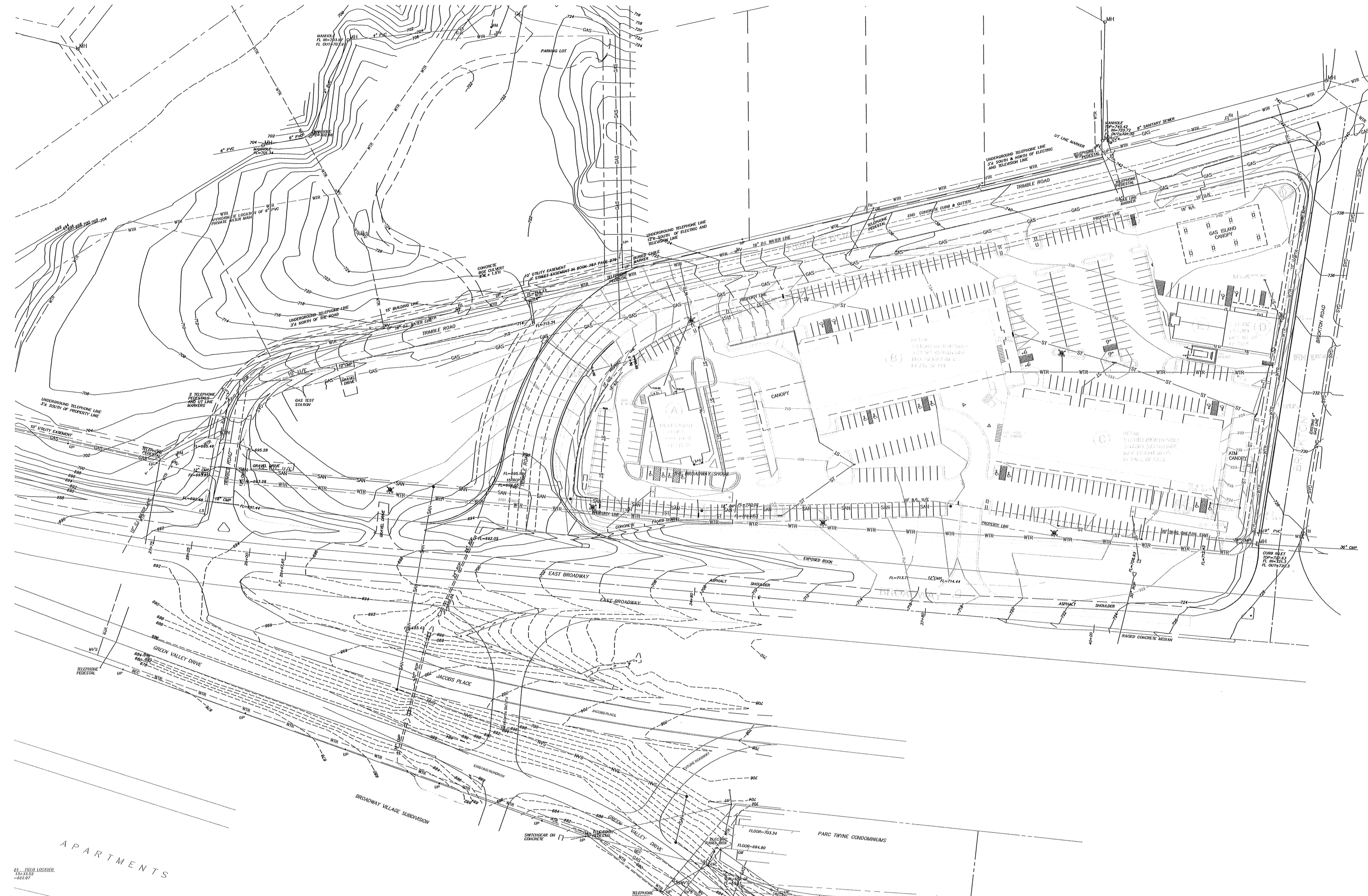
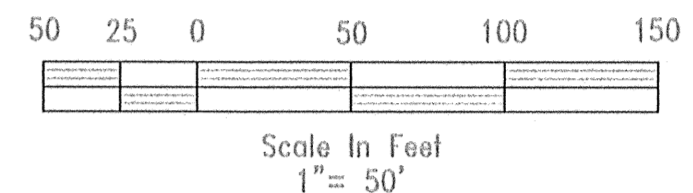
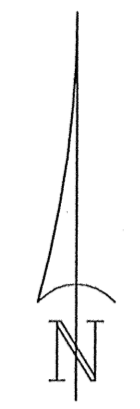
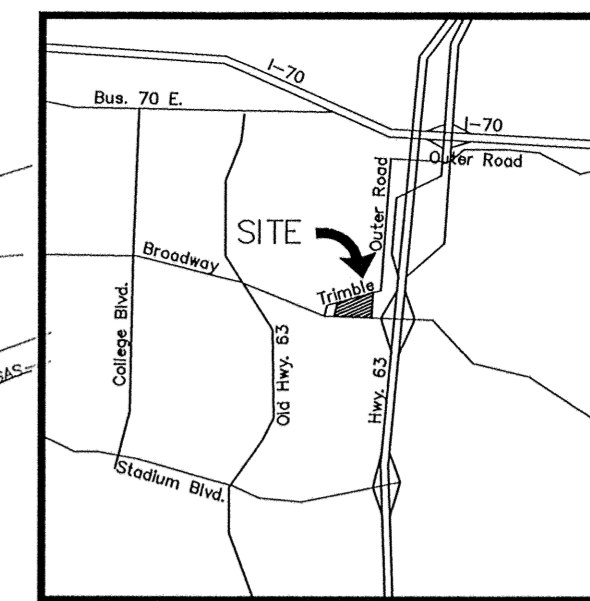
Automatic Teller Machine Signs - All such signs shall comply with the requirements of Section 23-24.1 of the City of Columbia Code of Ordinances.

LEGEND	
FREE STANDING MASTER SIGN (30' MAX.)	
SERVICE STATION SIGN (12' MAX.)	
DIRECTIONAL SIGN (3' MAX.)	
TRASH DUMPSTER	
TRASH DUMPSTER	
KIOSKS	

Submitted as a Minor Revision to the Broadway Shops CP Plan. Approved this 11th day of August, 2007, by the Planning Department
Timothy Taddy, Director of Planning

PROJECT NO:	02033
DATE:	8-15-03
DRAWN BY:	PJO
CHECKED BY:	
CHECKED BY:	
REVISION DATE	DESCRIPTION
8/8/03	REVISED BLDG. A
9/12/03	PER CITY COMMENTS
9/25/03	PER CITY COMMENTS
9/29/04	SITE REVISIONS
10/22/04	PER CITY COMMENTS
10/29/04	PER CITY COMMENTS
12/08/04	BREAKTIME REVISIONS
11/20/06	SIGNAGE DESCRIPTIONS
C-P SITE PLAN	
SHEET 1 OF 6	

PLOT DATE: 08/20/2004



UTILITY NOTES

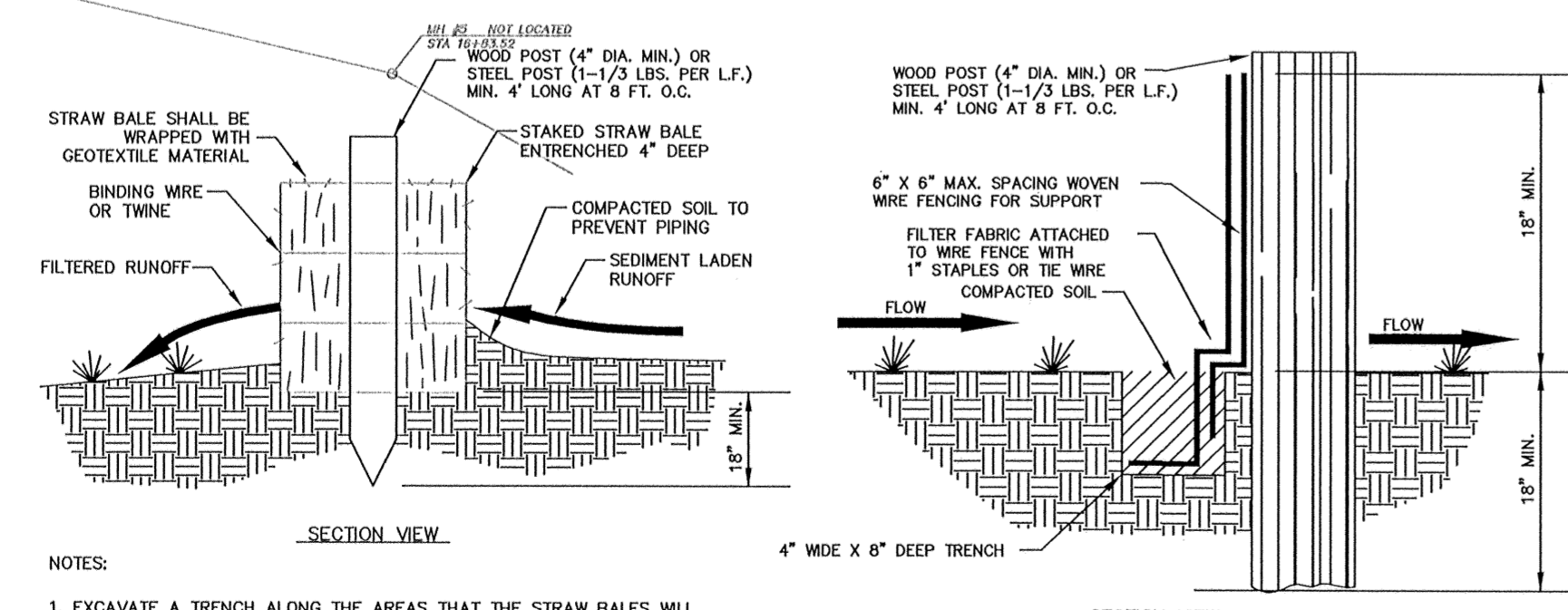
- WATER:**
 CITY OF COLUMBIA
 P.O. BOX 8215
 WATER & LIGHT DEPARTMENT
 COLUMBIA, MISSOURI 65205
 CONTACT: DAVID MAXSON 573-874-7325
 18" D.I. LINE ALONG NORTH SIDE OF TRUMBLE ROAD
 18" D.I. LINE RUNG NORTH FROM TRUMBLE ROAD NEAR WEST END OF TRUMBLE ROAD
 6" P.V.C. PRIVATE LINE NORTH OF TRUMBLE ROAD AS SHOWN
 6" S.I. LINE ALONG NORTH SIDE OF EAST BROADWAY
- ELECTRIC:**
 CITY OF COLUMBIA
 P.O. BOX 8215
 PUBLIC WORKS DEPARTMENT
 COLUMBIA, MISSOURI 65205
 CONTACT: DAN KELLER 573-874-7325
 13,800V. 3 PHASE ALONG NORTH SIDE OF TRUMBLE ROAD
 12,000V. 3 PHASE ALONG NORTH FROM TRUMBLE ROAD ALONG EAST LINE OF HOOPER SUBDIVISION
 BUNGE ELECTRIC COOPERATIVE
 1413 BANGSULE
 COLUMBIA, MO 65201
 CONTACT: MIRO MICHMEYER 573-441-7244
 9000V. 3 PHASE LINE CROSSES SITE 100' SOUTH OF TRUMBLE ROAD AS SHOWN
- GAS:**
 AMEREN UE
 210 ONE STREET
 COLUMBIA, MISSOURI 65203
 CONTACT: TOM WELLS 573-874-3063
 4" STEEL HIGH PRESSURE LINE ALONG SOUTH SIDE OF TRUMBLE ROAD
 2" PLASTIC HIGH PRESSURE LINE ALONG EAST SIDE OF BRICKTON ROAD
 4" PLASTIC HIGH PRESSURE LINE ALONG NORTH SIDE OF EAST BROADWAY WEST OF TRUMBLE ROAD
- TELEPHONE:**
 VERIZON
 624 S. CHERRY STREET
 COLUMBIA, MISSOURI 65201
 CONTACT: CHARLES SORBY 573-888-3700
 UNDERGROUND LINE ALONG NORTH SIDE OF TRUMBLE ROAD
 UNDERGROUND LINE ALONG EAST SIDE OF BRICKTON ROAD
- TELEVISION:**
 MIDCOM
 201 N. COLLEGE AVENUE
 P.O. BOX 8215
 COLUMBIA, MISSOURI 65201
 CONTACT: GEORGE MONTGOMERY 573-874-7325
 AS SHOWN
- SANITARY SEWER:**
 CITY OF COLUMBIA
 P.O. BOX 8215
 PUBLIC WORKS DEPARTMENT
 COLUMBIA, MISSOURI 65205
 CONTACT: GEORGE MONTGOMERY 573-874-7325
 AS SHOWN
- STORM SEWER:**
 CITY OF COLUMBIA
 P.O. BOX 8215
 PUBLIC WORKS DEPARTMENT
 COLUMBIA, MISSOURI 65205
 CONTACT: GEORGE MONTGOMERY 573-874-7325
 AS SHOWN

LEGEND

- ⊕ EXISTING WATER METER
- ⊕ EX. WATER VALVE
- EX. OVERHEAD TELEPHONE
- EX. UNDERGROUND TELEPHONE
- EX. SANITARY SEWER
- EX. UNDERGROUND GAS
- EX. OVERHEAD CABLE
- EX. OVERHEAD POWER
- EX. UNDERGROUND POWER
- EX. STORM SEWER
- EX. WATER LINE
- PROP. EROSION CONTROL FENCE
- EXISTING CONTOUR
- PROPOSED CONTOUR
- PROPERTY LINE
- EASEMENT

GENERAL NOTES:

- EXISTING SITE CONDITIONS USED AS THE BASE MAP FOR THE GRADING PLAN ARE BASED ON INFORMATION PROVIDED BY ENGINEERING SURVEYS AND SERVICES, INC., 1115 FAY STREET, COLUMBIA, MISSOURI, WHO PREPARED THE TOPOGRAPHIC AND BOUNDARY SURVEY OF THIS PROPERTY. DAY, INC. ASSUMES NO LIABILITY FOR THE ACCURACY OF THE EXISTING SITE CONDITIONS AS SHOWN ON THESE PLANS.
- GRADES SHOWN ON THESE DRAWINGS ARE ROUGH FINISHED GRADES. THEREFORE, FINISHED SUBGRADE SHALL BE CALCULATED AT APPROXIMATELY 1 FOOT BELOW FINISHED GRADE FOR ALL PAVED AREAS. SUBSEQUENT FINAL GRADING PLANS AND DETAILS WILL CLARIFY EXACT DIMENSIONS.
- ALL GRADING AND TRENCHING WORK SHALL CONFORM TO THE REQUIREMENTS OF THE CITY OF COLUMBIA, MISSOURI. NO FINISH GRADING SURFACE SLOPES SHALL BE STEEPER THAN 3 HORIZONTAL UNITS TO 1 VERTICAL UNIT (3:1).
- UNDERGROUND UTILITIES HAVE BEEN PLOTTED FROM AVAILABLE INFORMATION AND THEREFORE THEIR LOCATIONS MUST BE CONSIDERED APPROXIMATE ONLY. THE VERIFICATION OF THE LOCATION OF ALL UNDERGROUND UTILITIES, EITHER SHOWN OR NOT SHOWN ON THESE PLANS, SHALL BE THE RESPONSIBILITY OF THE CONTRACTOR AND SHALL BE LOCATED PRIOR TO ANY GRADING OR CONSTRUCTION OF IMPROVEMENTS.



- NOTES:**
- EXCAVATE A TRENCH ALONG THE AREAS THAT THE STRAW BALES WILL BE USED AS EROSION CONTROL TO A DEPTH OF 4 INCHES AND TO THE WIDTH OF ONE STRAW BALE. THE STRAW BALES THEN SHALL BE PLACED IN THE TRENCH, SAVED EXCAVATED MATERIAL ON THE UPSTREAM SIDE OF THE TRENCH.
 - STRAW BALES SHOULD BE ANCHORED WITH A MIN. OF 2 STAKES OR REBARS DRIVEN INTO THE UNDERLYING SOIL, MAKING SURE THAT THE BINDING WIRE OR TWINE IS FACING THE SIDES AND NOT TOUCHING THE SOIL. THE FIRST STAKE INTO EACH BALE SHOULD BE DRIVEN TOWARD THE PREVIOUSLY Laid BALE TO FORCE THEM TOGETHER.
 - SPACING BETWEEN THE BALES SHOULD BE TIGHTLY CHINKED WITH LOOSE STRAW.
 - AFTER STRAW BALES ARE IN PLACE THE EXCAVATED SOIL SHOULD BE BACKFILLED AGAINST THE UPSLOPE SIDE OF THE STRAW BALES TO A HEIGHT OF 4 INCHES AFTER COMPACTING.
 - STRAW BALES SHOULD BE INSPECTED AFTER EACH RAINFALL TO DETERMINE IF ANY REPAIRS OR REPLACEMENTS TO THE STRAW BALES ARE NEEDED. IF IT IS DETERMINED THAT THE STRAW BALES NEED TO BE REPAIRED OR REPLACED, THIS SHOULD BE DONE IMMEDIATELY. SEDIMENT ACCUMULATIONS MUST BE REMOVED WHEN THEY REACH 1/2 THE BARRIER HEIGHT.

- NOTES:**
- THE FILTER FABRIC SHALL HAVE A MINIMUM FILTERING EFFICIENCY OF 75%, A MINIMUM TENSILE STRENGTH OF 30 LBS. PER LINEAR INCH AND A FLOW RATE OF 0.5 GALLONS PER SQUARE FOOT PER MINUTE. THE FILTER FABRIC SHALL ALSO HAVE ULTRAVIOLET RAY INHIBITORS TO ASSURE A LIFE USE EXPECTANCY OF 6 MONTHS AT 0 TO 100 DEGREES FAHRENHEIT.
 - THE FILTER FABRIC SHALL BE 18" - 36" IN HEIGHT, WITH JOINTS AT EVERY POST AND OVERLAP IF POSSIBLE (6" MIN. OVERLAP IF NECESSARY) AND POSTS SPACED EVERY 8 FEET WITH WIRE MESH SUPPORT MAKING SURE THAT A MIN. OF 4" OF FABRIC IS BURIED IN THE 4" X 8" TRENCH.
 - THE SET FENCE SHALL BE INSPECTED AFTER EVERY RAINFALL TO DETERMINE IF ANY PART OF THE FENCE NEEDS TO BE REPAIRED OR REPLACED. IF IT IS DETERMINED THAT THE FENCE NEEDS ANY REPAIR OR REPLACEMENT THIS SHALL BE DONE IMMEDIATELY.
 - SEDIMENT DEPOSITS SHALL BE REMOVED AFTER EACH RAINFALL OR BEFORE THEY ACCUMULATE TO 1/2 OF THE FENCE HEIGHT.

BEFORE YOU
DIG - DRILL - BLAST



Call
1-800-344-7483 (MISSOURI)
1-800-344-7233 (KANSAS)

Architect
 Berger Devine Yeager,
 17760 BROADWAY, SUITE
 300 KANSAS CITY, MISSOURI
 64111
 TEL: (816) 561-2761
 FAX: (816) 561-9222
 www.bdyinc.com

Civil
 Berger Devine Yeager,
 17760 BROADWAY, SUITE
 300 KANSAS CITY, MISSOURI
 64111
 TEL: (816) 561-2761
 FAX: (816) 561-9222
 www.bdyinc.com

General Contractor
 Coil Construction Co.
 209 EAST BROADWAY
 COLUMBIA, MISSOURI 65203
 TEL: 573-874-1444
 FAX: 573-443-3039

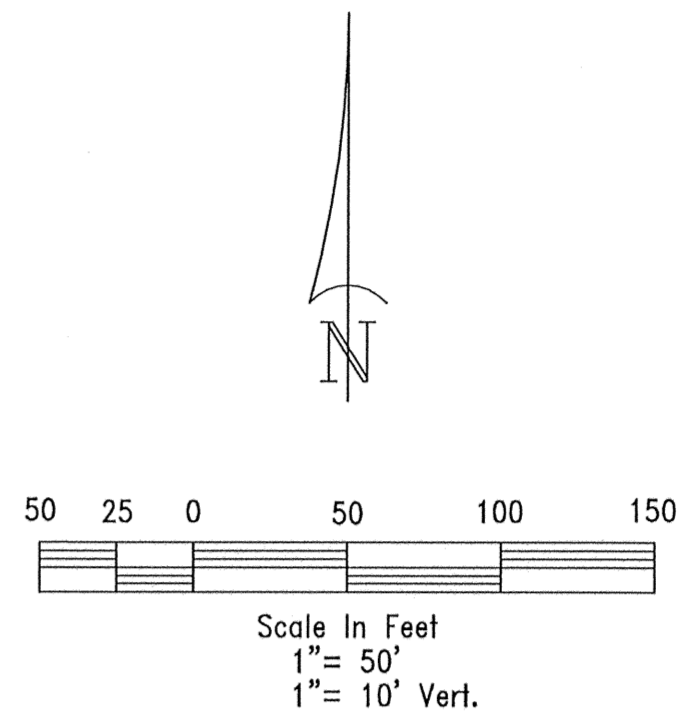
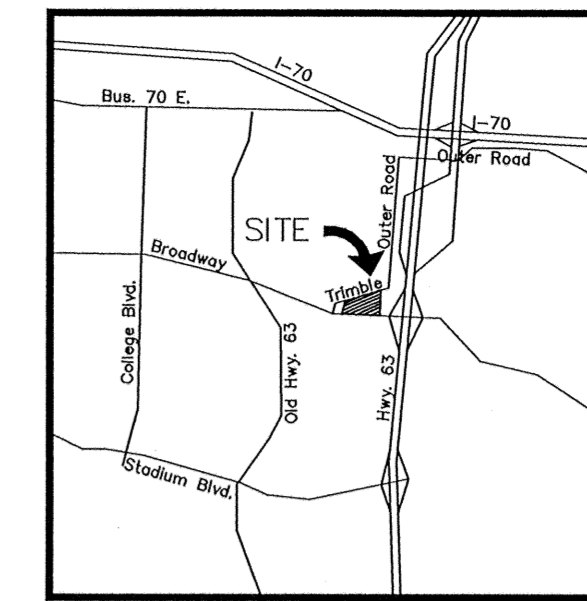
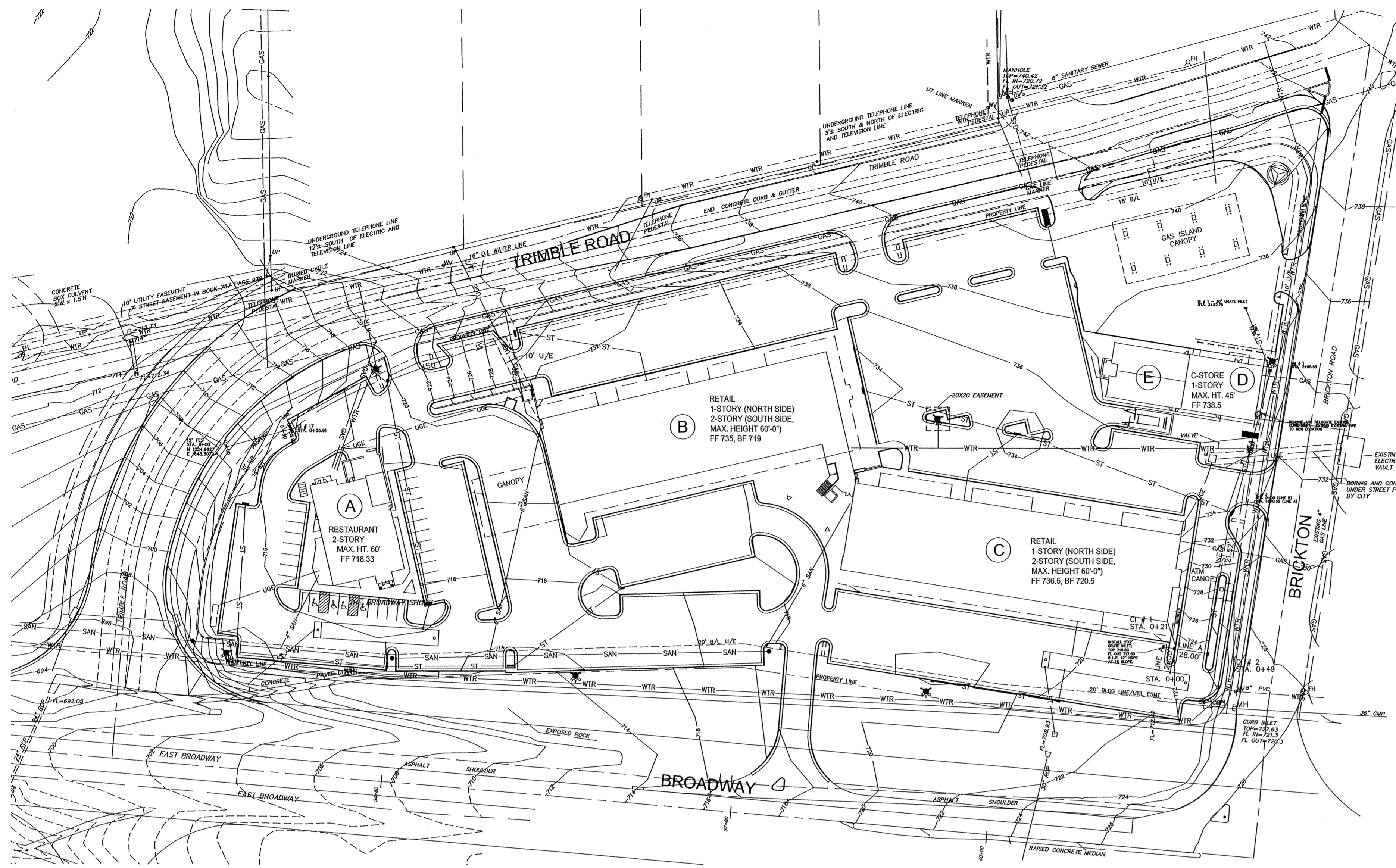
BROADWAY SHOPS
 P.O. BOX 1037
 COLUMBIA, MISSOURI

REVISION DATE	DESCRIPTION
9/23/03	PER CITY COMMENTS
2/7/04	CONSIST. DOCUMENTS
3/20/04	PER COMMENTS
9/25/04	SITE REVISIONS
10/22/04	PER CITY COMMENTS
12/09/04	BREAKTILE REVISIONS

GRADING &
 EROSION CONTROL
 PLAN

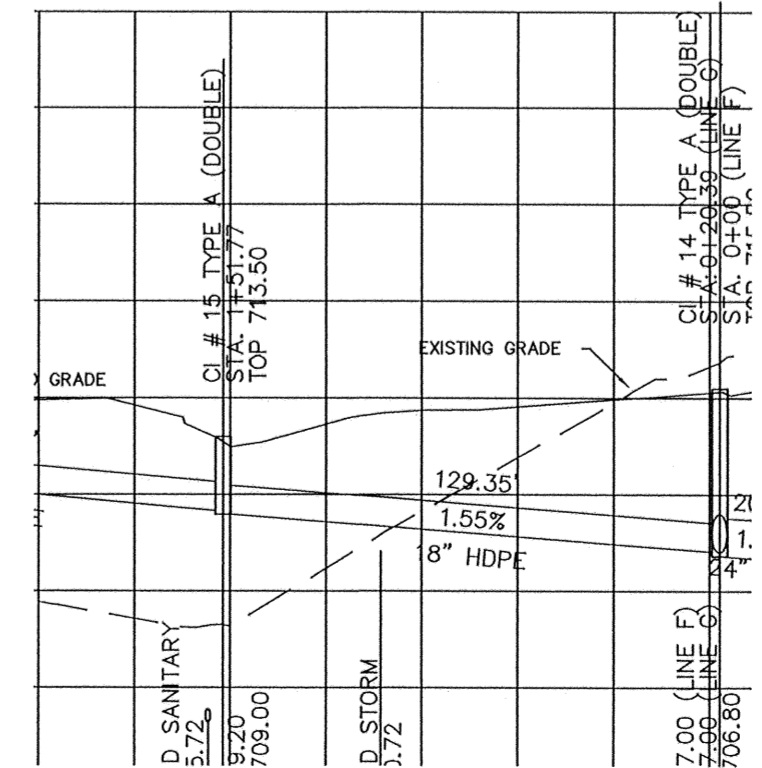
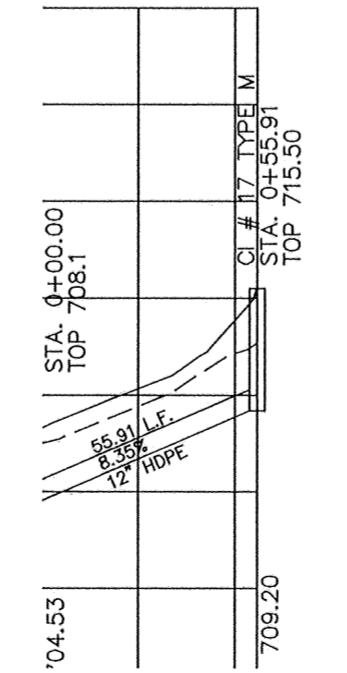
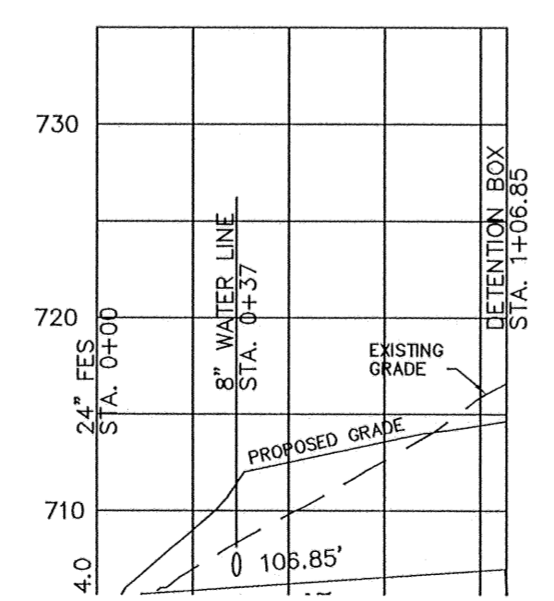
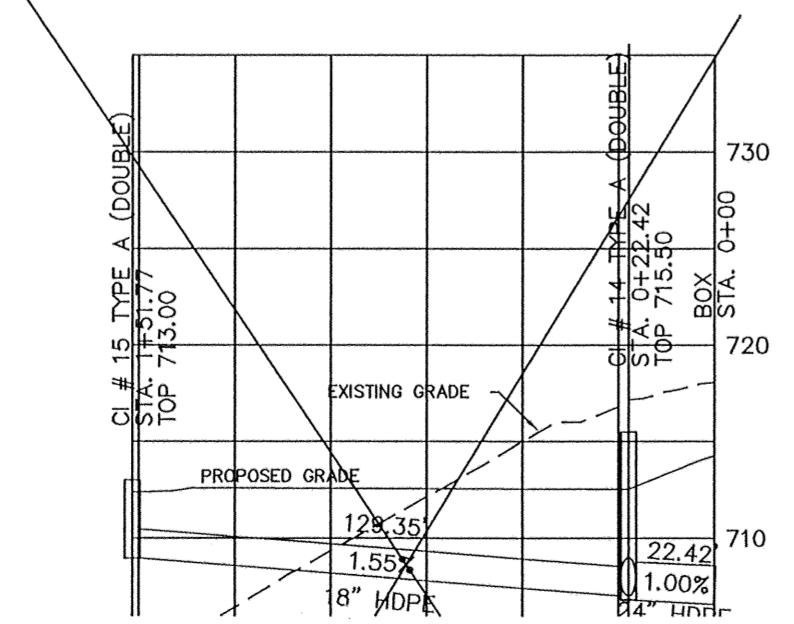
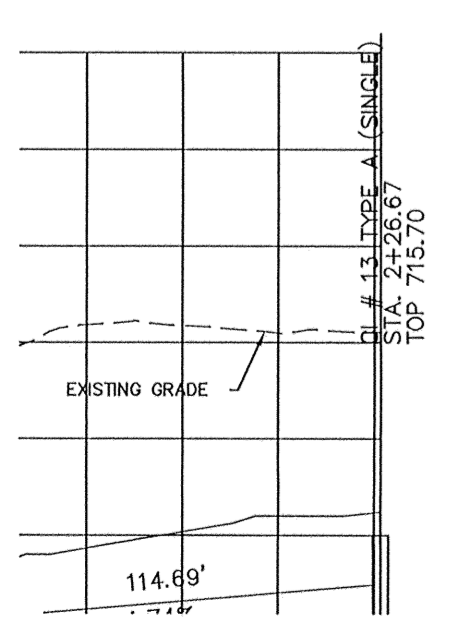
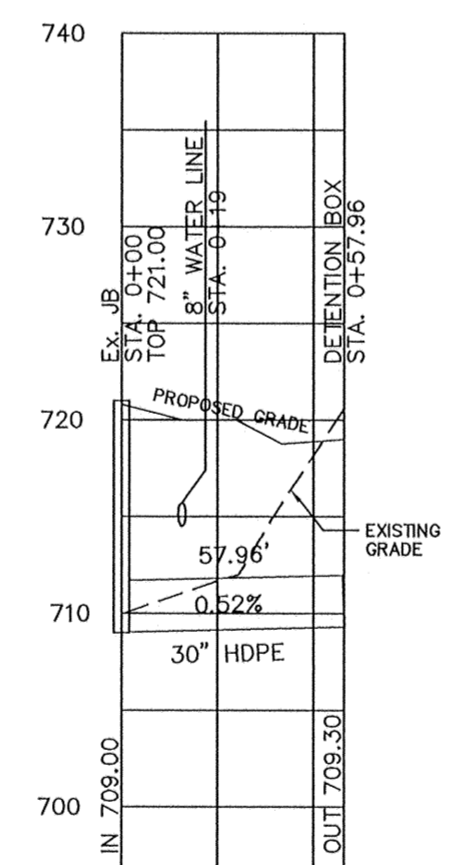
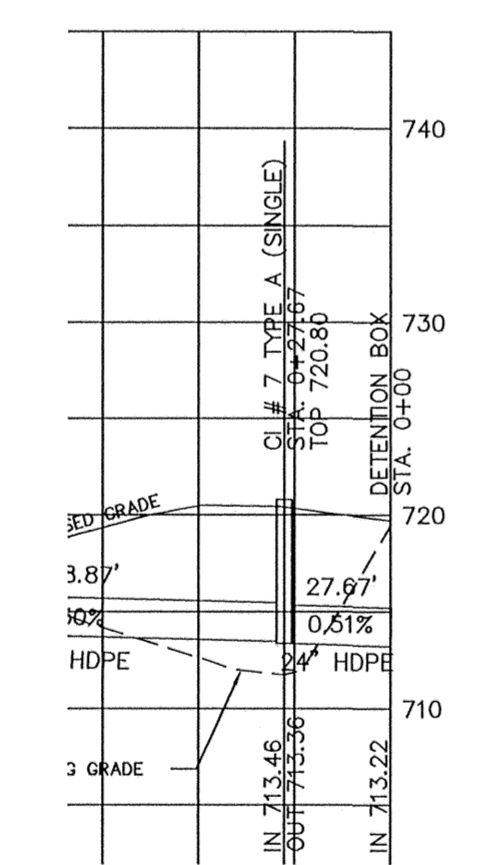
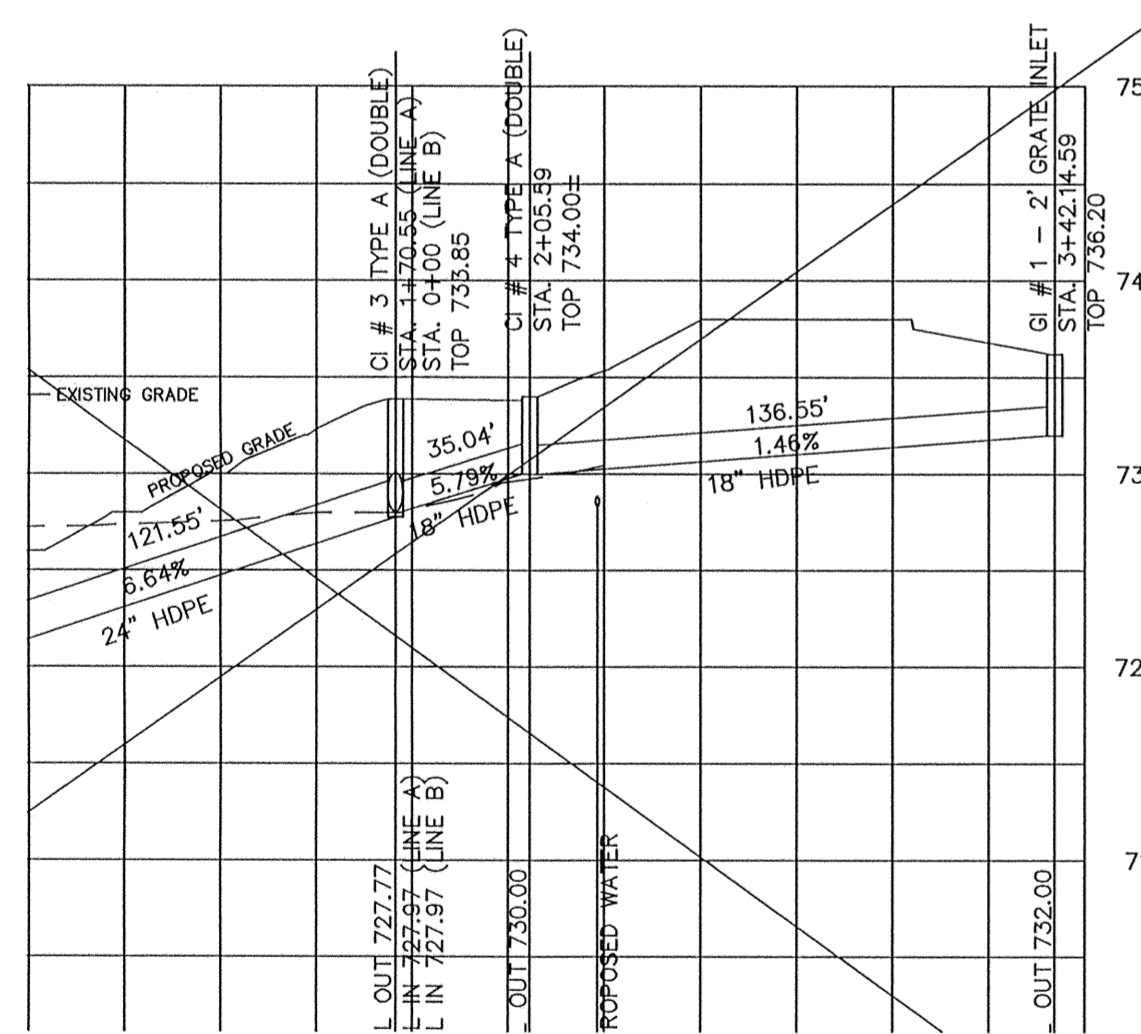
SHEET
 2 OF 6

©Berger Devine Yeager, Inc.



Architect
 Berger Devine Yaeger,
 3700 BROADWAY, SUITE
 300 KANSAS CITY, MISSOURI
 64111
 Tel: (816) 561-2761
 Fax: (816) 561-9222
 www.bdyinc.com

Civil Engineer
 Berger Devine Yaeger,
 3700 BROADWAY, SUITE
 300 KANSAS CITY, MISSOURI
 64111
 Tel: (816) 561-2761
 Fax: (816) 561-9222
 www.bdyinc.com

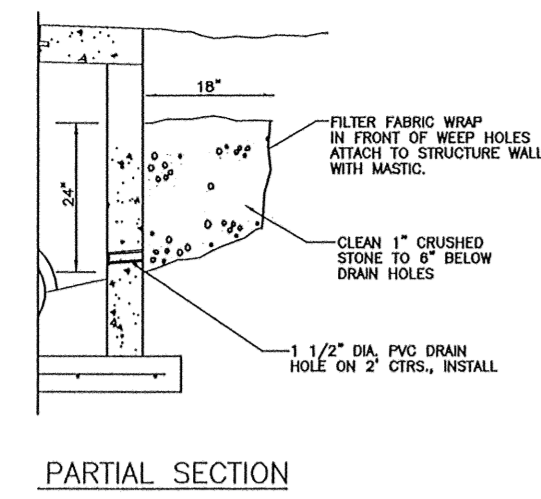


BROADWAY SHOPS
 P.O. BOX 1037
 COLUMBIA, MISSOURI

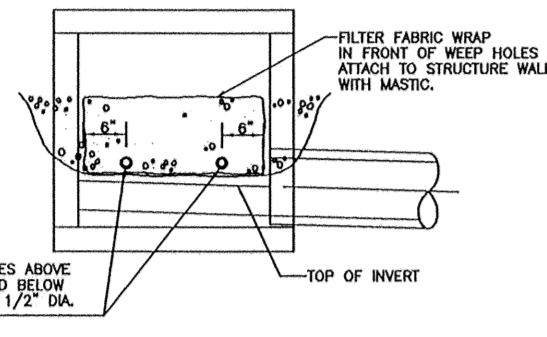
PROJECT NO:	02033
DATE:	6-13-03
DRAWN BY:	PJO
CHECKED BY:	JMP
CHECKED BY:	JMP
REVISED DATE	DESCRIPTION
2/12/04	CONST. DOCUMENTS
9/9/04	SITE REVISIONS
10/22/04	PER CITY COMMENTS
12/08/04	BREAKTIME REVISIONS

STORM WATER
 PLAN & PROFILE

SHEET
 3 OF 6



PARTIAL SECTION

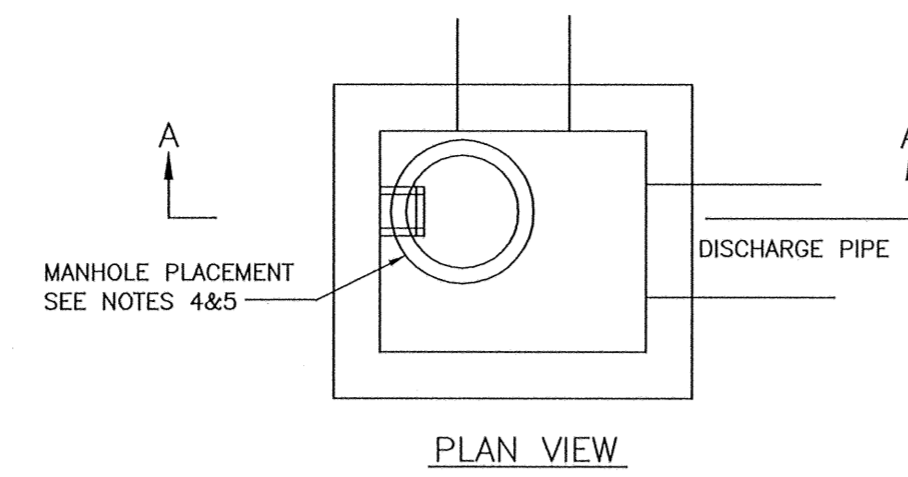


FRONT ELEVATION

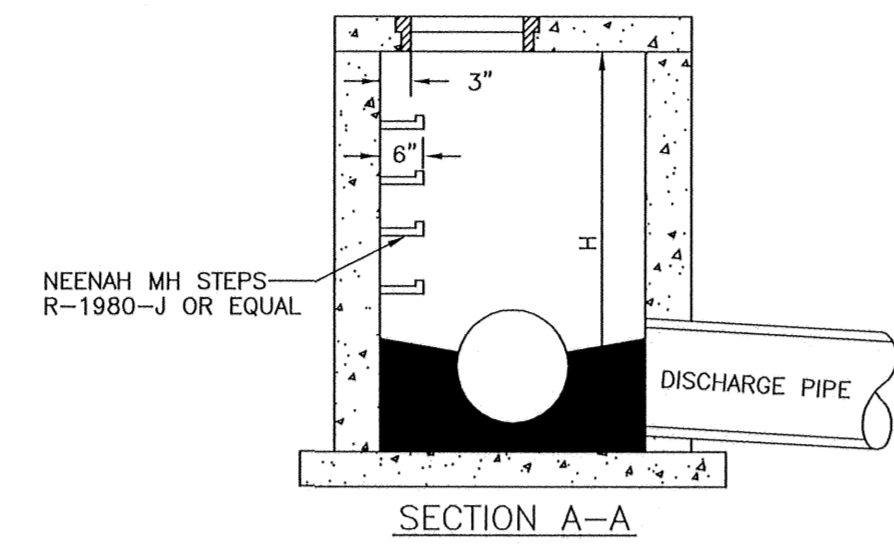
NOTE:

1. PLACE WEEP HOLES ON UPSTREAM FACE OF ALL STRUCTURES AND ALSO ON ROADWAY FACE OF CURB INLET STRUCTURES.
2. WEEP HOLE FILTER FABRIC SHALL CONSIST OF A NON-WOVEN, POLYPROPYLENE TYPE FABRIC SUCH AS: AMOCO 4553 NON-WOVEN GEOTEXTILE FABRIC OR APPROVED EQUAL.

DRAINAGE STRUCTURE WEEP HOLES



PLAN VIEW

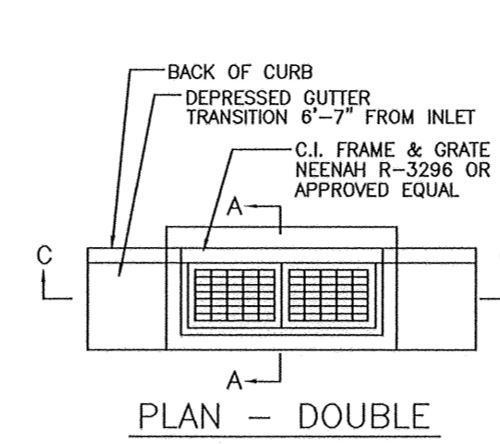


SECTION A-A

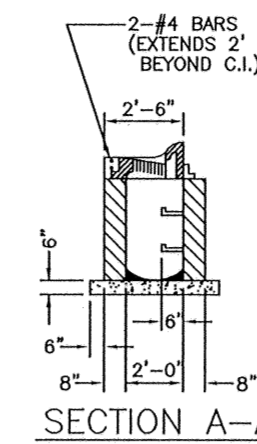
NOTES:

1. STEPS NOT REQUIRED WHERE H IS LESS THAN 4'.
2. CAST IRON STEPS SHALL BE NEENAH R-1980-J OR EQUAL.
3. STEPS SHALL BE PLACED ON VACANT WALL WHEN POSSIBLE.
4. MANHOLE RING SHALL BE OFFSET TOWARD WALL WITH STEPS.
5. MANHOLE RING SHALL BE CENTERED ON CENTERLINE OF STEPS.
6. STAGGER STEPS 2" EACH WAY FROM CENTERLINE OF MANHOLE RING.
7. TOP STEP 24" BELOW TOP OF SLAB.
8. STEP SPACING TO BE 16", BOTTOM STEP TO BE NO HIGHER THAN 16" FROM INVERT.

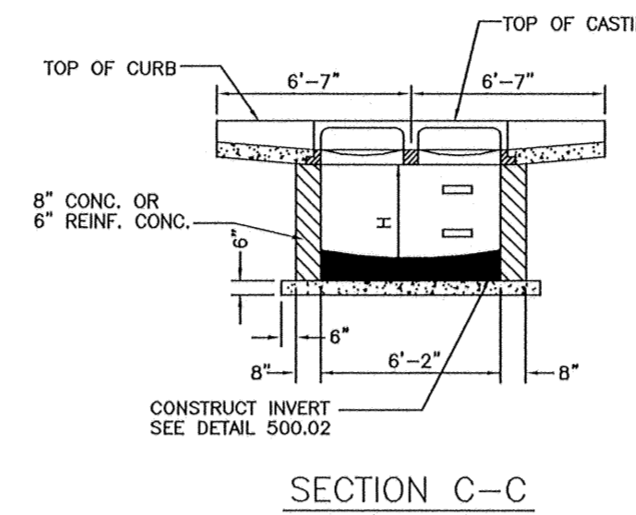
DRAINAGE STRUCTURE STEPS



PLAN - DOUBLE



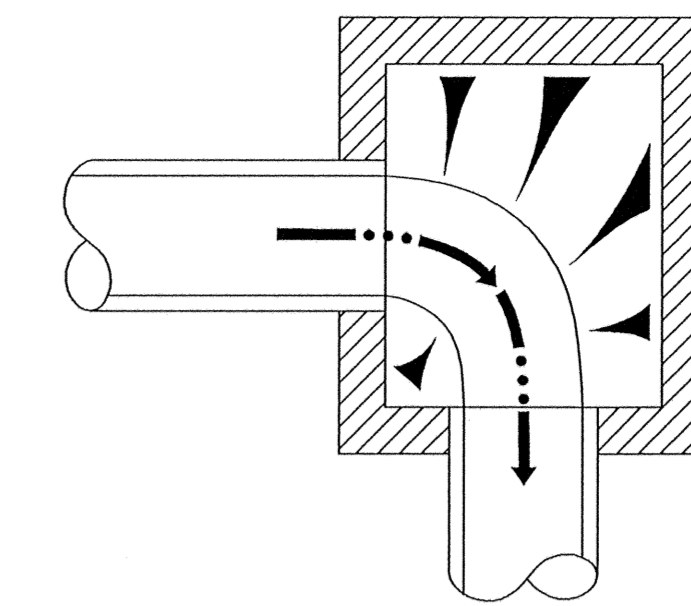
SECTION A-A



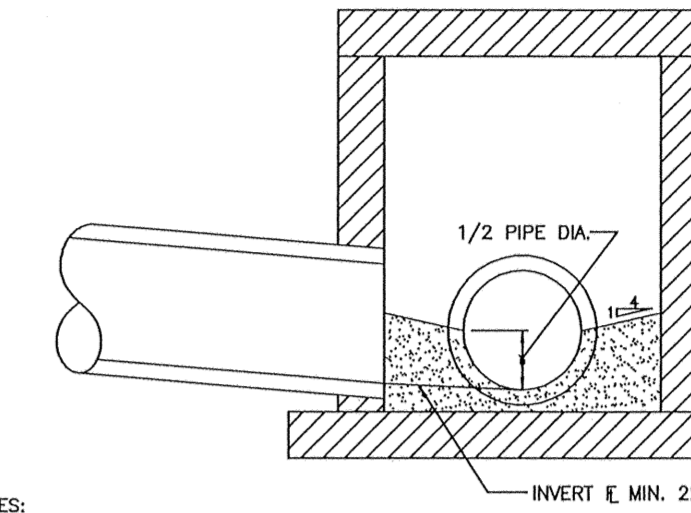
SECTION C-C

- NOTES:
1. CONCRETE SHALL BE CLASS E FOR BASES AND D FOR WALLS AND TOP.
 2. REINFORCING STEEL SHALL BE GRADE 60.
 3. INSTALL WEEP HOLES AS PER DETAIL THIS SHEET.
 4. STRUCTURES WHERE H>8" SHALL BE REINFORCED CONCRETE (#4 BARS AT 12" CTRS, BOTH WAYS AND #4 BARS DIAGONAL AT PIPE OPENINGS)

TYPE A CURB INLET (DOUBLE)



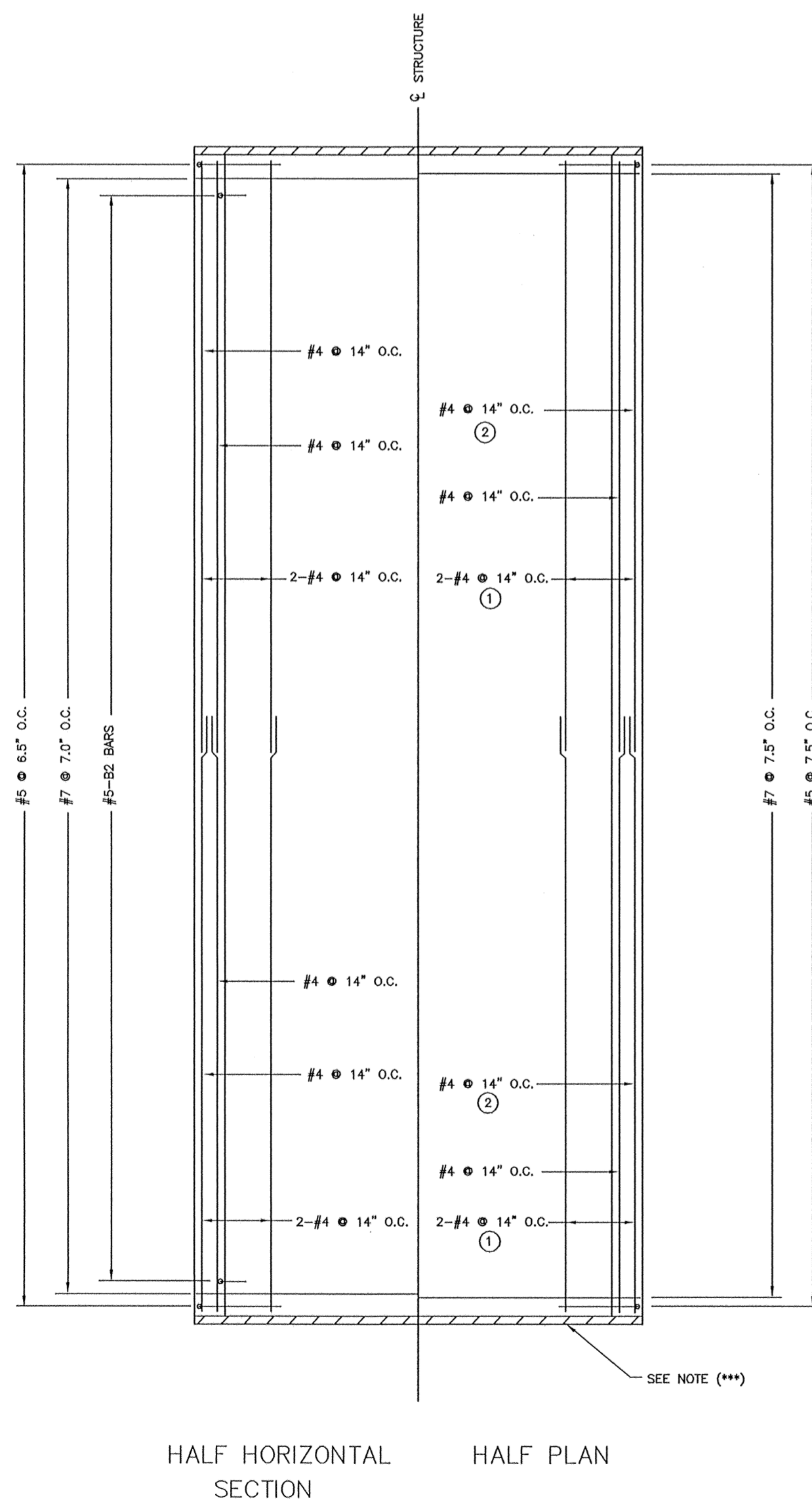
PLAN



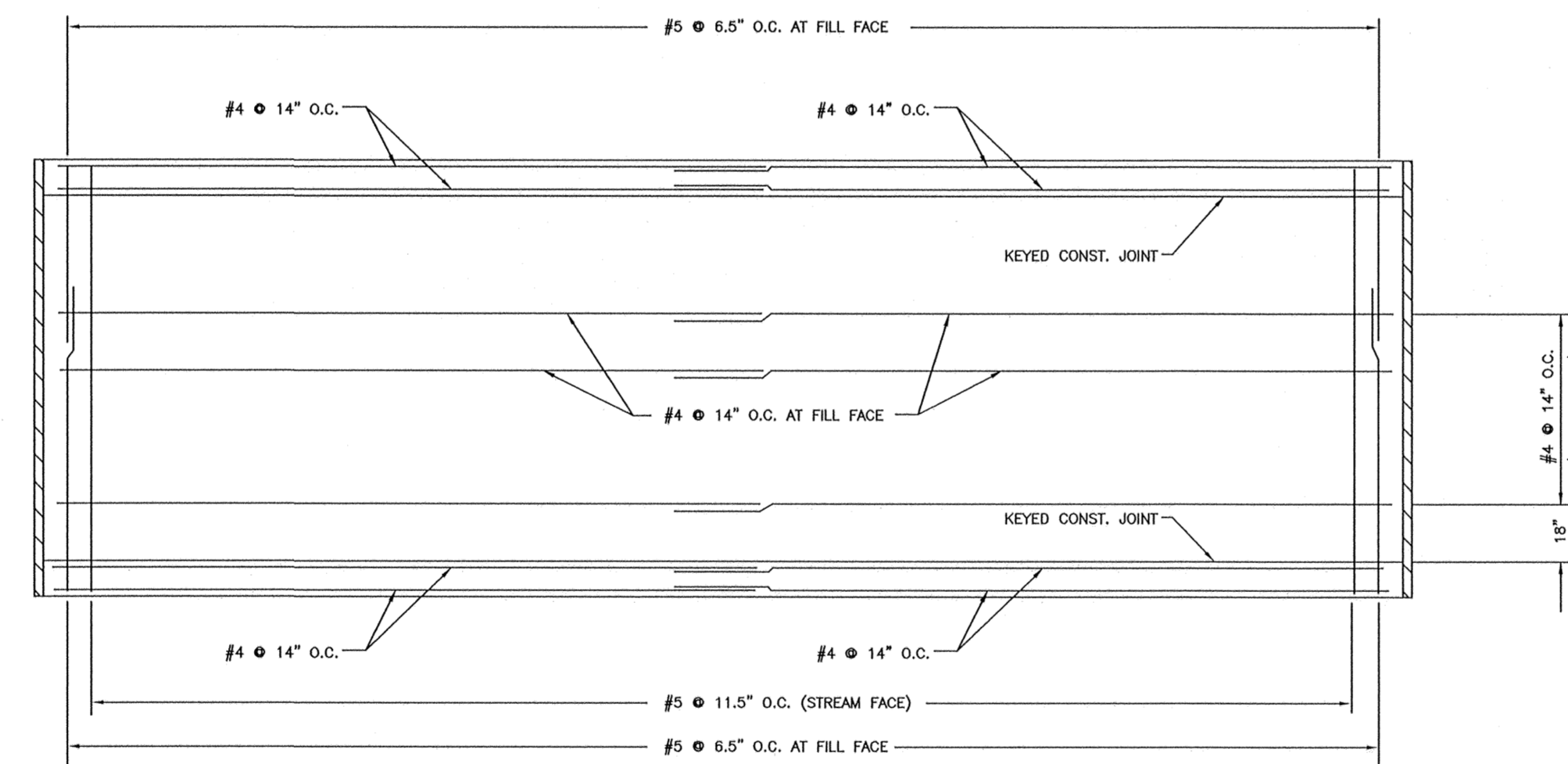
SECTION

- NOTES:
1. FORM ALL INVERTS FOR SMOOTH FLOW THRU STRUCTURE.
 2. INVERT SHALL BE FORMED UP TO 1/2 THE PIPE DIAMETER.
 3. INVERT SHALL BE CLASS E CONCRETE.

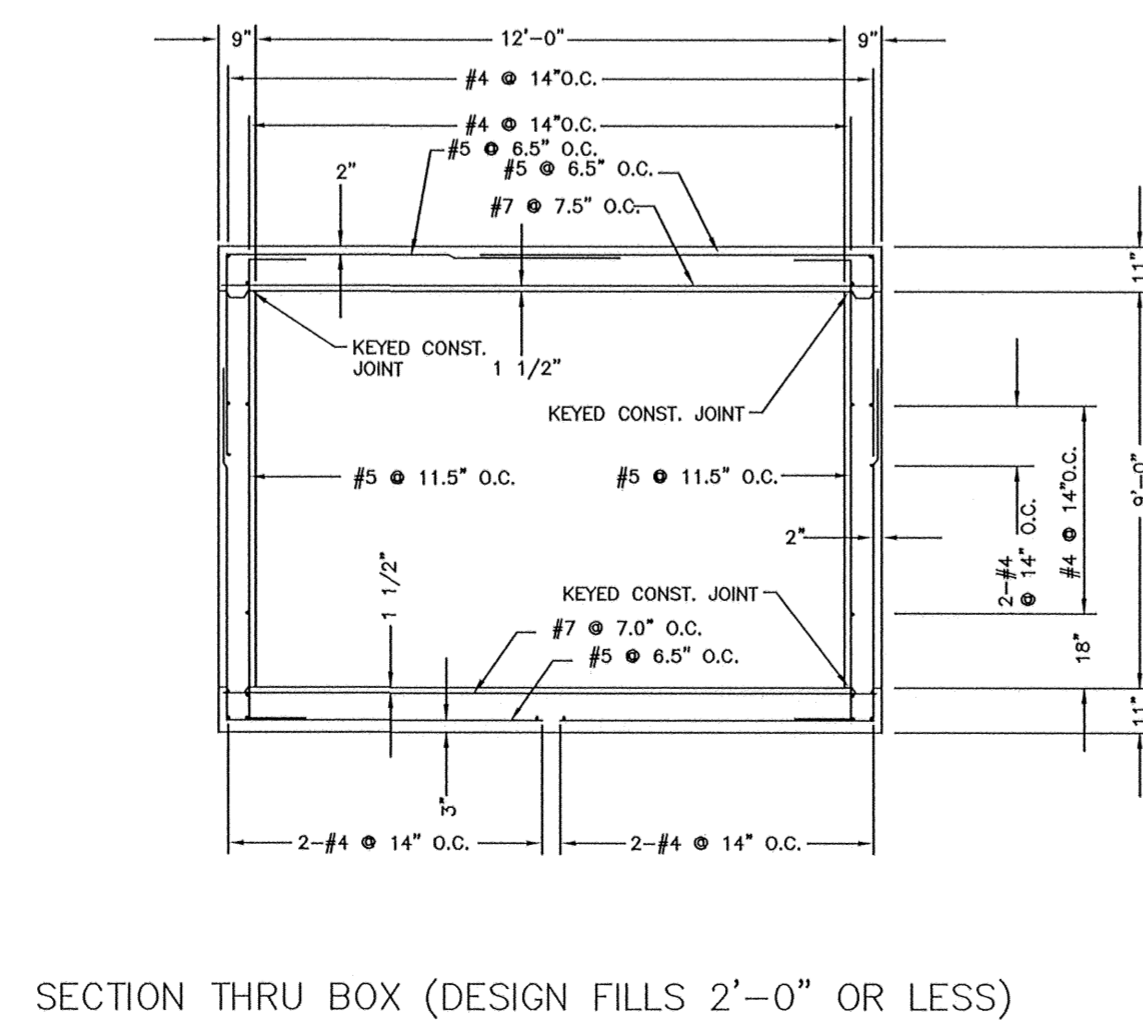
CURB INLET INVERT



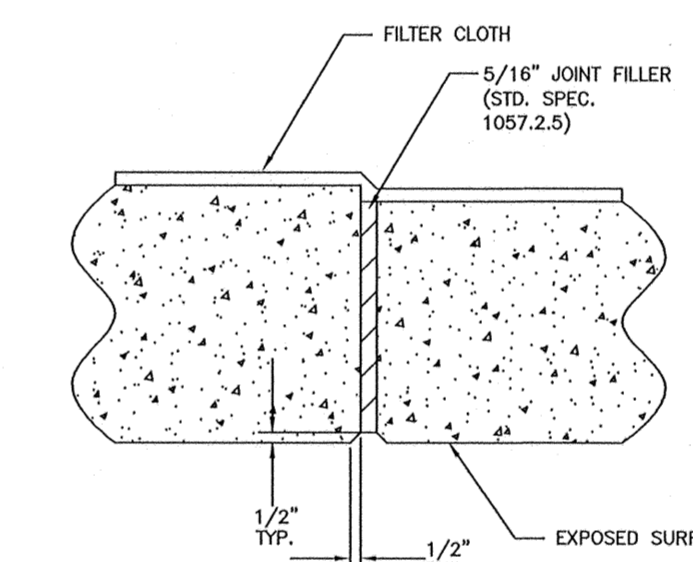
HALF HORIZONTAL SECTION HALF PLAN



ELEVATION OF WALL

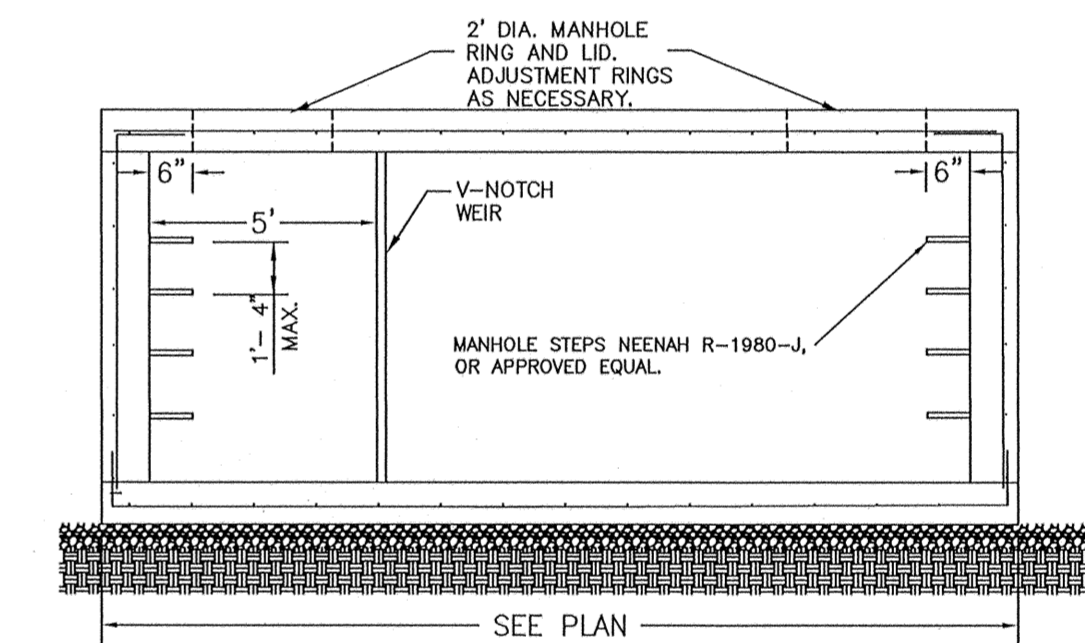


SECTION THRU BOX (DESIGN FILLS 2'-0" OR LESS)

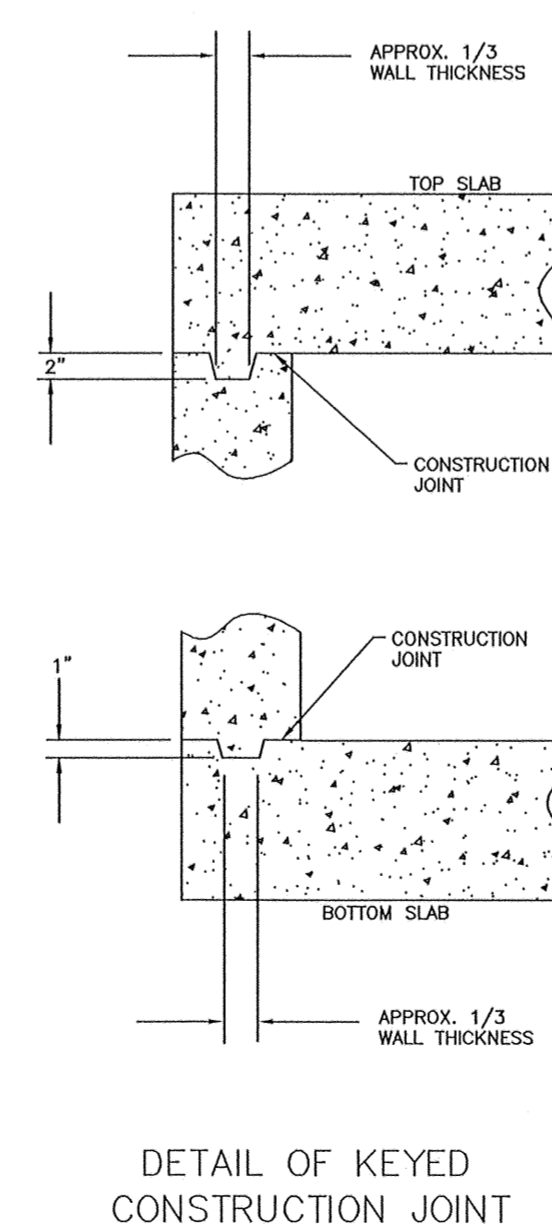
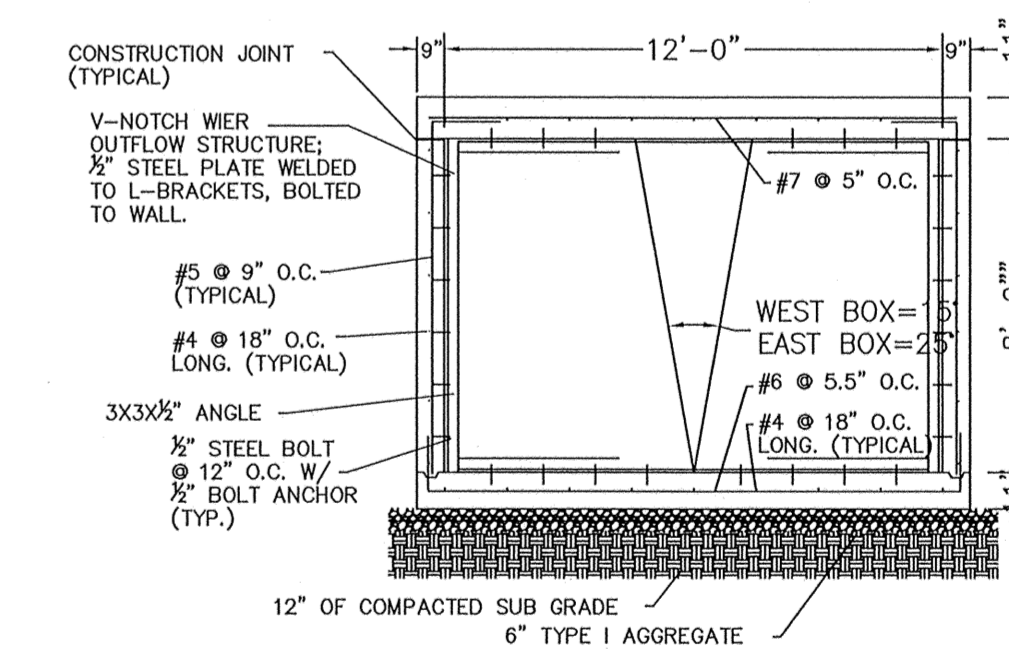


DETAIL OF TRANSVERSE JOINT THRU BARREL OF CULVERT

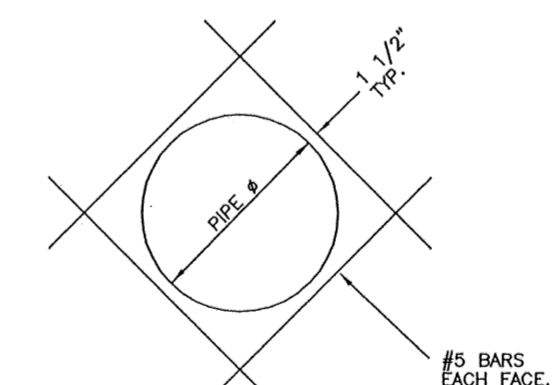
1. USE THESE BARS FOR DESIGN FILLS OF MORE THAN 2'-0".
 2. USE THESE BARS FOR DESIGN FILLS OF 2'-0" OR LESS.
- (***) USE TRANSVERSE JOINT WHEN BARREL IS OVER 80 FEET LONG BETWEEN HEADWALLS MEASURED ALONG C OF BOX. USE ADDITIONAL TRANSVERSE JOINTS TO PROVIDE 50 FEET MAXIMUM SPACING BETWEEN JOINTS.



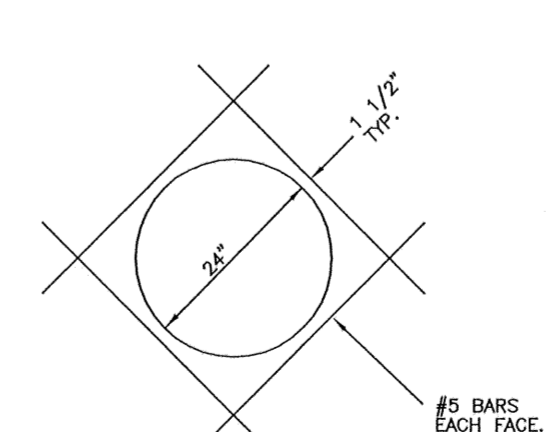
SEE PLAN



DETAIL OF KEYED CONSTRUCTION JOINT



PIPE OPENING REINFORCEMENT DETAIL



ACCESS OPENING REINFORCEMENT DETAIL

GENERAL NOTES:

- DESIGN UNIT STRESSES:
 CLASS B-1 CONCRETE, $f'_c = 4,000$ psi
 REINFORCING STEEL (GRADE 60), $f_y = 60,000$ psi
- ALL DIMENSIONS SHOWN ARE IN INCH UNLESS OTHERWISE NOTED.
 FOR DIMENSIONS AND SIZE AND SPACING OF REINFORCING STEEL, SEE STANDARD SHEET 703.105.
- LAP ALL LONGITUDINAL BARS A MINIMUM OF 23" AT SPLICES.
 MINIMUM CLEARANCE TO REINFORCING STEEL SHALL BE 1-1/2" UNLESS OTHERWISE SHOWN.
- JOINT FILLER SHALL BE SECURELY STITCHED TO ONE FACE OF THE CONCRETE WITH NO. 10 GAGE COPPER WIRE OR NO. 12 GAGE SOFT DRAWN GALVANIZED STEEL WIRE.
- A FILTER CLOTH 3 FEET IN WIDTH AND DOUBLE THICKNESS SHALL BE APPLIED TO ALL TRANSVERSE JOINTS IN THE TOP SLAB AND SIDEWALLS. THE MATERIAL SHALL BE CENTERED ON THE JOINT AND THE EDGES SEALED WITH A MASTIC OR WITH TWO SIDED TAPE. THE FILTER CLOTH SHALL BE A GEOTEXTILE MEETING THE APPROVAL OF THE ENGINEER AND HAVING A DRAB TENSILE STRENGTH OF 180 LBS. (ASTM D-4632) AND AN APPARENT OPENING SIZE OF 50 TO 100 (ASTM D-4753). NO DIRECT PAYMENT WILL BE MADE FOR FURNISHING AND INSTALLING FILTER CLOTH.

Architect
 Berger Devine Yeager, Inc.
 3700 BROADWAY, SUITE
 300 KANSAS CITY, MISSOURI
 64111
 Tel: (816) 561-2761
 Fax: (816) 561-9222
 www.bdyinc.com

Civil Engineer
 Berger Devine Yeager, Inc.
 3700 BROADWAY, SUITE
 300 KANSAS CITY, MISSOURI
 64111
 Tel: (816) 561-2761
 Fax: (816) 561-9222
 www.bdyinc.com

BROADWAY SHOPS
 P.O. BOX 1037
 COLUMBIA, MISSOURI

PROJECT NO:	02033
DATE:	8-15-03
DRAWN BY:	PJO
CHECKED BY:	JMP
REVISION DATE	DESCRIPTION
9/23/03	PER CITY COMMENTS
2/12/04	CONST. DOCUMENTS
9/5/04	SITE REVISIONS
10/22/04	PER CITY COMMENTS

STORM WATER DETAILS

Total Area	318,907 SQ. FT.
Paved Area	170,813 SQ. FT.
Landscape Area Required	47,836 SQ. FT.
Landscape Area Provided	49,172 SQ. FT.

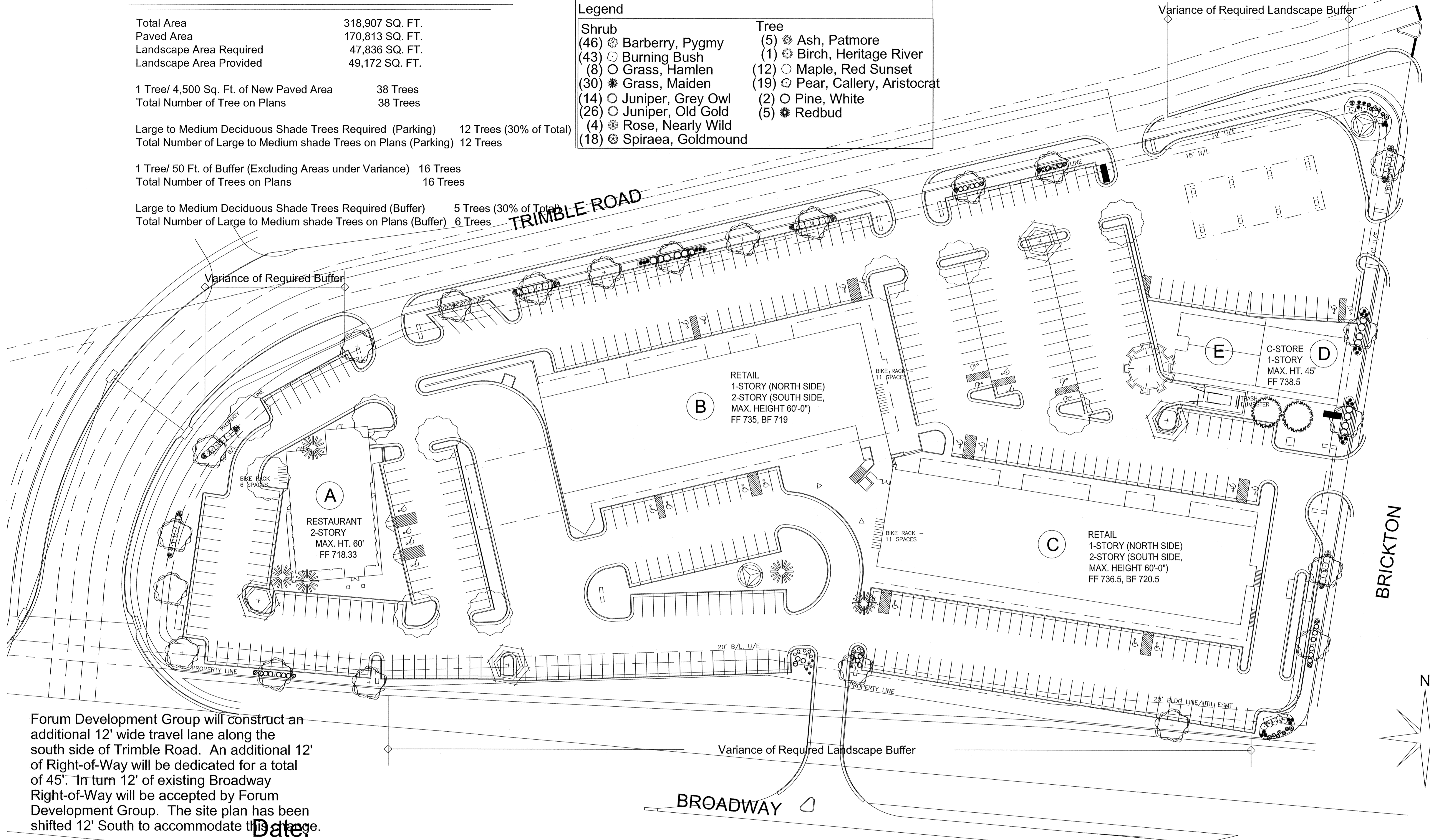
1 Tree/ 4,500 Sq. Ft. of New Paved Area	38 Trees
Total Number of Tree on Plans	38 Trees

Large to Medium Deciduous Shade Trees Required (Parking)	12 Trees (30% of Total)
Total Number of Large to Medium shade Trees on Plans (Parking)	12 Trees

1 Tree/ 50 Ft. of Buffer (Excluding Areas under Variance)	16 Trees
Total Number of Trees on Plans	16 Trees

Large to Medium Deciduous Shade Trees Required (Buffer)	5 Trees (30% of Total)
Total Number of Large to Medium shade Trees on Plans (Buffer)	6 Trees

Legend	
Shrub	Tree
(46) Barberry, Pygmy	(5) Ash, Patmore
(43) Burning Bush	(1) Birch, Heritage River
(8) Grass, Hamlen	(12) Maple, Red Sunset
(30) Grass, Maiden	(19) Pear, Callery, Aristocrat
(14) Juniper, Grey Owl	(2) Pine, White
(26) Juniper, Old Gold	(5) Redbud
(4) Rose, Nearly Wild	
(18) Spiraea, Goldmound	



Forum Development Group will construct an additional 12' wide travel lane along the south side of Trimble Road. An additional 12' of Right-of-Way will be dedicated for a total of 45'. In turn 12' of existing Broadway Right-of-Way will be accepted by Forum Development Group. The site plan has been shifted 12' South to accommodate the change.

Revision #2.0
9/15/04

Scale:
1/32" = 1'

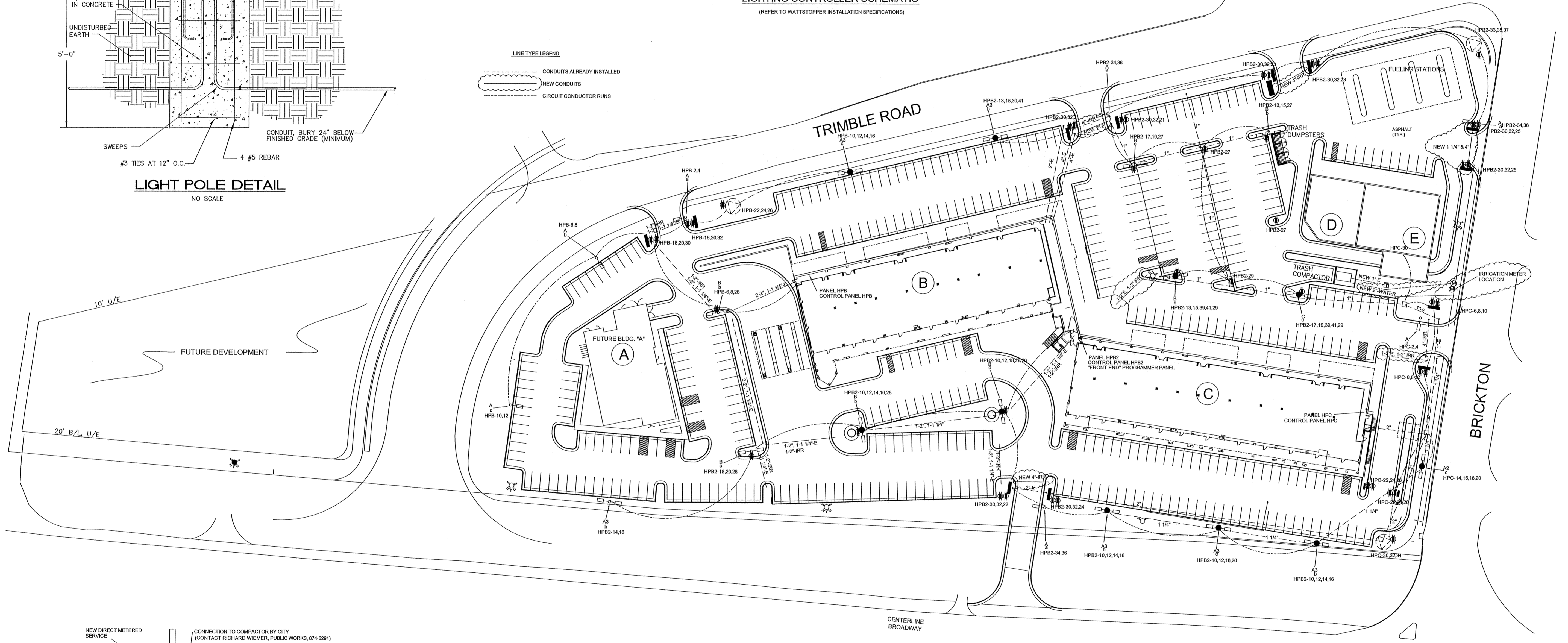
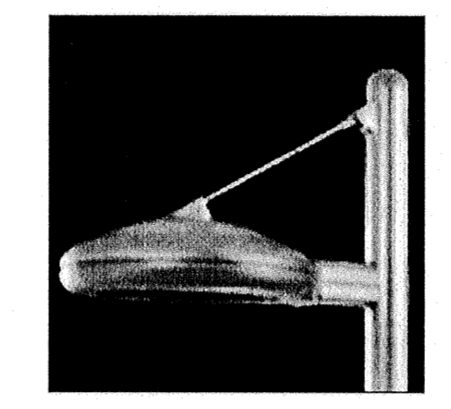
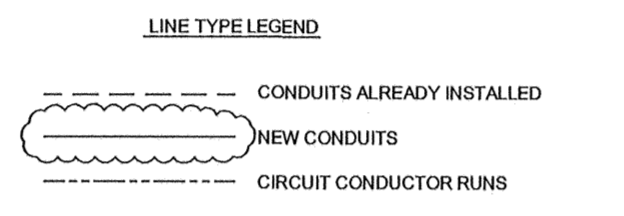
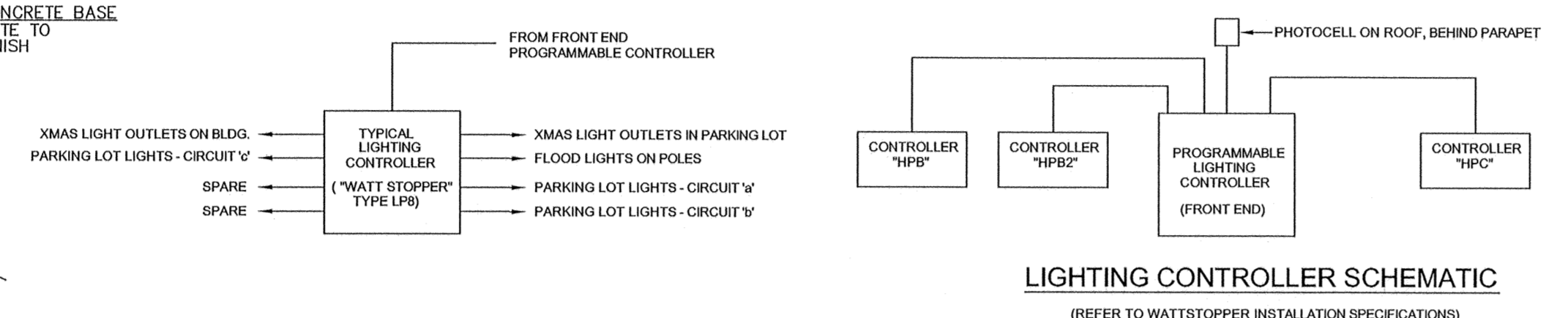
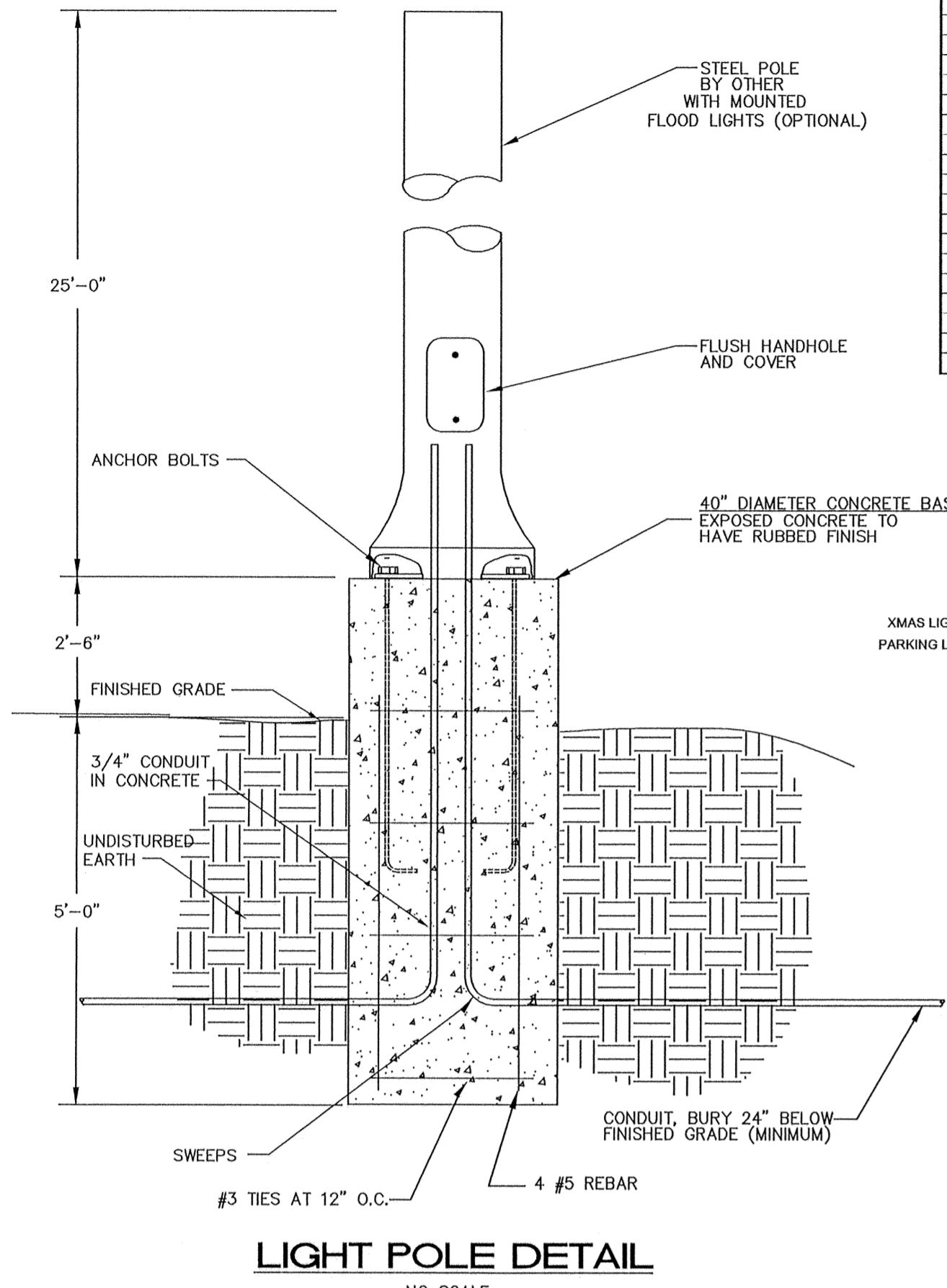
Landscape Plan:
Broadway Shops

Sheet #
5 of 6

ELECTRICAL PANEL SCHEDULE										PANEL NO. HPB	
VOLTS	208	MAIN CAPACITY:	225 MLO	"A" AMPS=	97						
PHASE	3	MOUNTING:	RECESSED	"B" AMPS=	84						
WIRE	4#30 TRG EQ GRD.	BUSS MATERIAL:	COPPER	"C" AMPS=	86						
AIR	10,000	SQUARE D MODEL:	NOOD	TOTAL=	267						
CKT.	LOCATION/DESC.	BREAKER	AMPS	PH	AMPS	BREAKER	LOCATION/DESC.	CKT.			
1	ARCADE LIGHTS	20-1	12	A	2	20-2	NW ENTRANCE LTS	2			
3	ARCADE LIGHTS	20-1	12	B	2	20-2	"	4			
5	ARCADE LIGHTS	20-1	12	C	8	20-2	NW POLE LTS-CKT 'B'	6			
7	LIGHTS	20-1	12	A	8	"	"	8			
9	LIGHTS	20-1	12	B	8	20-2	NW POLE LTS-CKT 'C'	10			
11	LIGHTS	20-1	12	C	8	"	"	12			
13	CORRIDOR LIGHTS	20-1	12	A	5	20-2	NW POLE FLOOD LTS	14			
15	CORRIDOR LIGHTS	20-1	12	B	5	"	"	16			
17	CORRIDOR LIGHTS	20-1	12	C	6	20-2	NW ENTRANCE SIGNS	18			
19	CORRIDOR LIGHTS	20-1	12	A	6	"	"	20			
21	PHONE BOARD RECEP.	20-1	5	B	8	20-2	NW LARGE SIGN	22			
23	OUTSIDE OUTLETS	20-1	12	C	8	"	"	24			
25	OUTSIDE OUTLETS	20-1	12	A	8	20-1	NW LARGE SIGN OUTLET	26			
27	CANOPY OUTLETS	20-1	12	B	8	20-1	ISLAND OUTLETS	28			
29	"	"	"	C	8	20-1	ISLAND OUTLETS	30			
31	"	"	"	A	8	20-1	ISLAND OUTLETS	32			
33	"	"	"	B	"	"	"	34			
35	"	"	"	C	"	"	"	36			
37	"	"	"	A	"	"	"	38			
39	"	"	"	B	"	"	"	40			
41	"	"	"	C	"	"	"	42			

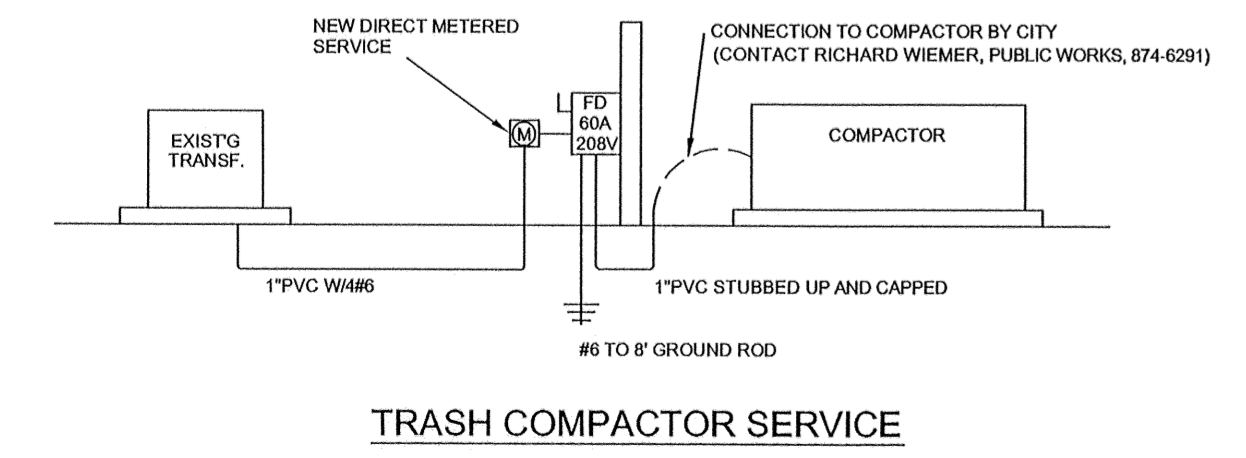
ELECTRICAL PANEL SCHEDULE										PANEL NO. HPB2	
VOLTS	208	MAIN CAPACITY:	225 MLO	"A" AMPS=	174						
PHASE	3	MOUNTING:	SURF	"B" AMPS=	180						
WIRE	4#30, 1#6 EQ GRD.	BUSS MATERIAL:	COPPER	"C" AMPS=	185						
AIR	10,000	SQUARE D MODEL:	NOOD	TOTAL=	530						
CKT.	LOCATION/DESC.	BREAKER	AMPS	PH	AMPS	BREAKER	LOCATION/DESC.	CKT.			
1	ELEVATOR DISC	80-1	64	A	8	20-1	CORRIDOR LIGHTS	2			
3	"	"	64	B	6	20-1	UPPER LANDING LTS	4			
5	"	"	64	C	10	20-2	"	6			
7	ELEV 120 DISC.	20-1	10	A	10	"	WALL HTTR	8			
9	ELEV SUMP PUMP	15-2	8	B	25	30-2	POLE FLOOD LTS-CKT 'P'	10			
11	"	"	8	C	25	"	"	12			
13	NE POLE LTS-CKT 'B'	20-2	12	A	16	25-2	S POLE LTS-CKT 'B'	14			
15	"	"	12	B	16	"	"	16			
17	NE POLE LTS-CKT 'C'	20-2	8	C	12	20-2	S POLE LTS-CKT 'C'	18			
19	"	"	8	A	12	"	"	20			
21	NE ISLAND OUTLET	20-1	5	B	5	20-1	ISLAND OUTLETS	22			
23	NE ISLAND OUTLET	20-1	5	C	5	20-1	ISLAND OUTLETS	24			
25	NE ISLAND OUTLET	20-1	5	A	5	20-1	ISLAND OUTLETS	26			
27	NE ISLAND OUTLET	20-1	5	B	5	20-1	ISLAND OUTLETS	28			
29	NE ISLAND OUTLET	20-1	5	C	14	20-2	ENTRANCE SIGNS-S&NE	30			
31	NE ISLAND OUTLET	20-1	5	A	14	"	"	32			
33	NE SIGN	20-2	8	B	6	20-2	S ENTRANCE LTS.	34			
35	NE SIGN OUTLET	20-1	5	A	"	"	"	36			
37	POLE FLOOD LTS-CKT 'P'	20-2	15	B	"	"	"	38			
41	"	"	15	C	"	"	"	42			

ELECTRICAL PANEL SCHEDULE										PANEL NO. HPC	
VOLTS	208	MAIN CAPACITY:	225 MLO	"A" AMPS=	77						
PHASE	3	MOUNTING:	RECESSED	"B" AMPS=	72						
WIRE	4#30 TRG EQ GRD.	BUSS MATERIAL:	COPPER	"C" AMPS=	72						
AIR	10,000	SQUARE D MODEL:	NOOD	TOTAL=	221						
CKT.	LOCATION/DESC.	BREAKER	AMPS	PH	AMPS	BREAKER	LOCATION/DESC.	CKT.			
1	ARCADE LIGHTS	20-1	12	A	2	20-2	E ENTRANCE POLE LTS	2			
3	ARCADE LIGHTS	20-1	12	B	"	"	"	4			
5	ARCADE LIGHTS	20-1	12	C	"	"	"	6			
7	ARCADE LIGHTS	20-1	12	A	"	"	"	8			
9	ARCADE LIGHTS	20-1	12	B	"	"	"	10			
11	ARCADE LIGHTS	20-1	12	C	"	"	"	12			
13	CORRIDOR LIGHTS	20-1	12	A	"	"	"	14			
15	CORRIDOR LIGHTS	20-1	12	B	"	"	"	16			
17	CORRIDOR LIGHTS	20-1	12	C	"	"	"	18			
19	CORRIDOR LIGHTS	20-1	12	A	"	"	"	20			
21	CORRIDOR LIGHTS	20-1	12	B	"	"	"	22			
23	CORRIDOR LIGHTS	20-1	12	C	"	"	"	24			
25	CORRIDOR LIGHTS	20-1	12	A	"	"	"	26			
27	CORRIDOR LIGHTS	20-1	12	B	"	"	"	28			
29	CORRIDOR LIGHTS	20-1	12	C	"	"	"	30			
31	PHONE BOARD	20-1	5	A	"	"	SE ENTRANCE SIGN	32			
33	OUTSIDE OUTLETS	20-1	12	B	"	"	"	34			
35	CHRISTMAS LIGHTS	20-1	12	C	"	"	"	36			
37	CONV OUTLETS	20-1	12	A	"	"	"	38			
39	"	"	"	B	"	"	"	40			
41	"	"	"	C	"	"	"	42			



Luminaire Schedule					
Project: All Projects					
Qty	Label	Arrangement	Lumens	LLF	Description
1	C	ROTATED OPTICS	36000	0.720	ICM-400-MH-MT-3S
6	A3	ROTATED OPTICS	36000	0.720	ICM-400-MH-MT-4S-HSS TWIN ROTATED OPTICS
1	A2	ROTATED OPTICS	36000	0.720	ICM-400-MH-MT-3S-HSS TWIN ROTATED OPTICS
7	B	BACK-BACK	36000	0.720	ICM-400-MH-MT-SS TWIN
6	A	SINGLE	36000	0.720	ICM-400-MH-MT-3S-HSS

FIXTURES MOUNTED ON 25' POLES



TRASH COMPACTOR SERVICE

