



#17-178: Northern Heights Subdivision Plat 2A Final Plat



| | |
|-------------|---------------------|
| Roads | Columbia City Limit |
| City Zoning | CityViewparcels |
| Parcels | |

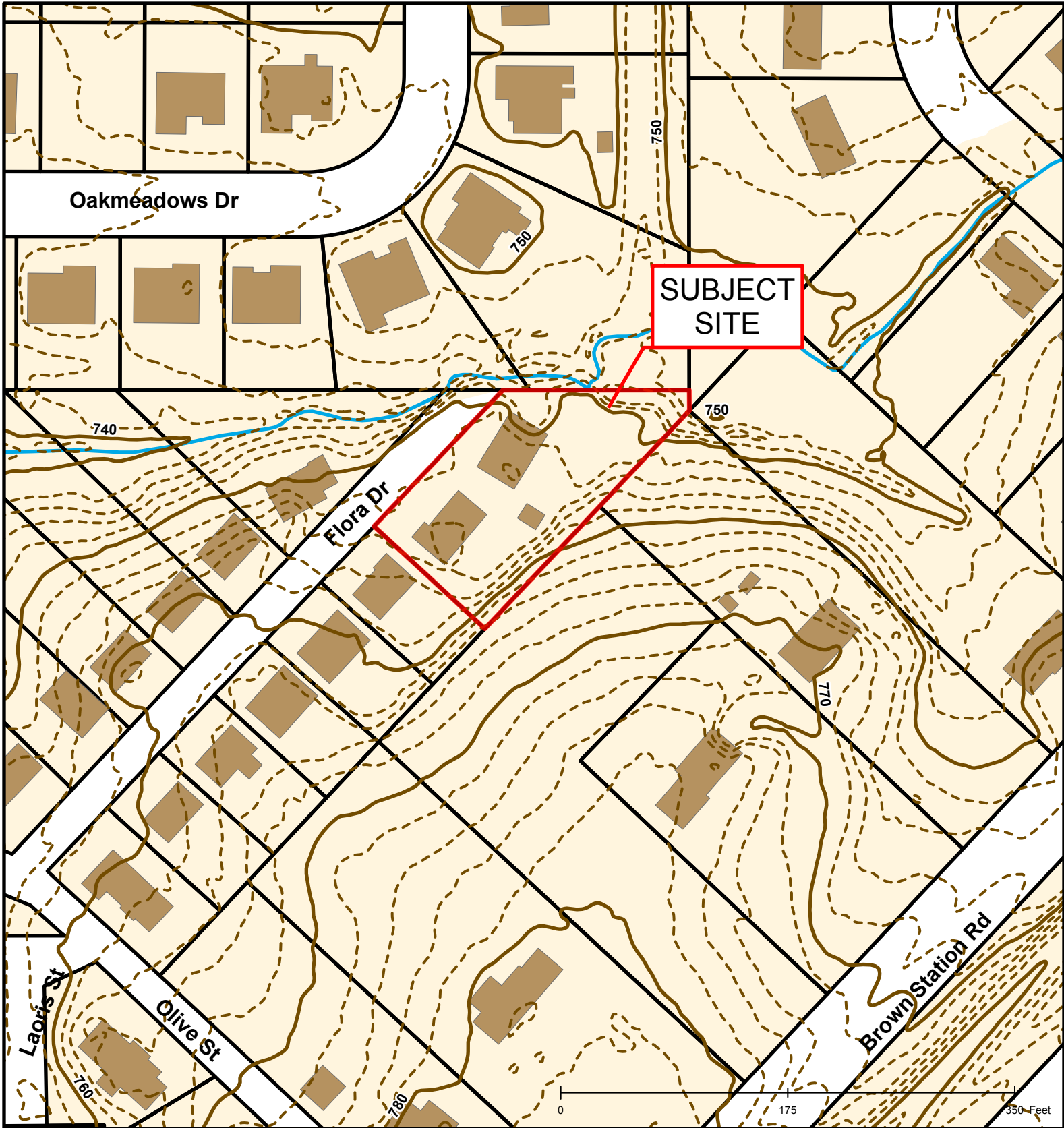


Created by The City of Columbia - Community Development Department

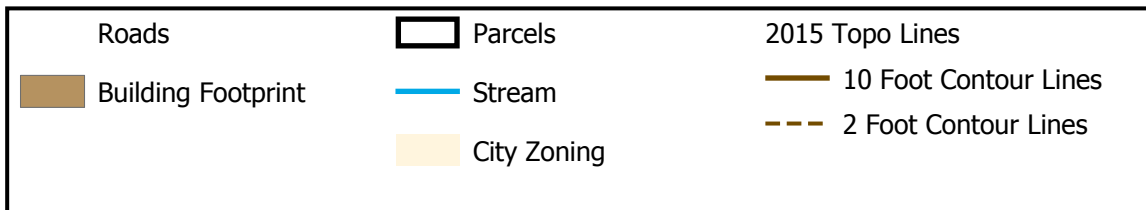
Parcel Data Source: Boone County Assessor

2015 Imagery: Boone County Assessor's Office

Hillshade Data: Boone County GIS Office



#17-178: Northern Heights Subdivision Plat 2A Final Plat

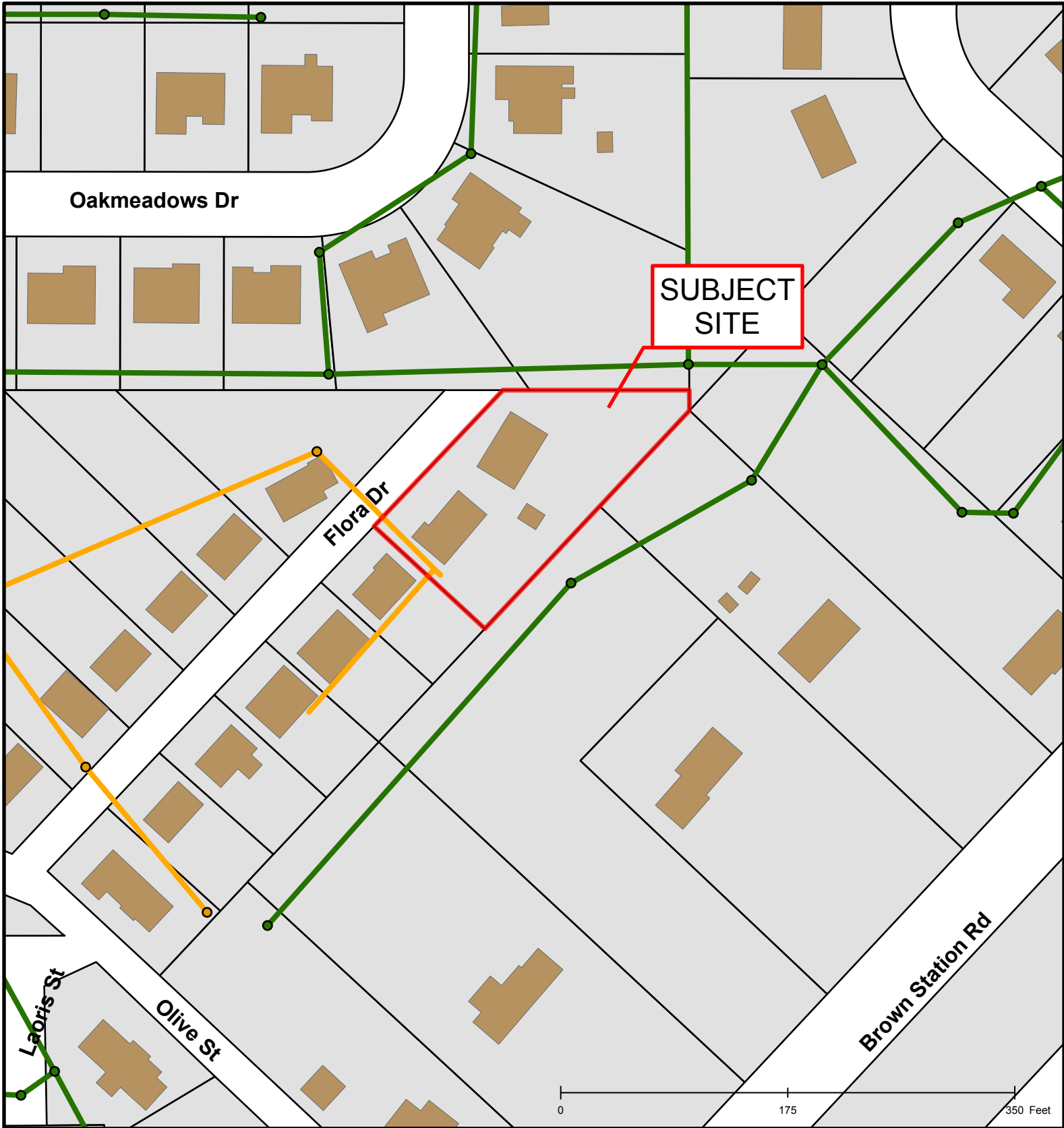


Created by The City of Columbia - Community Development Department

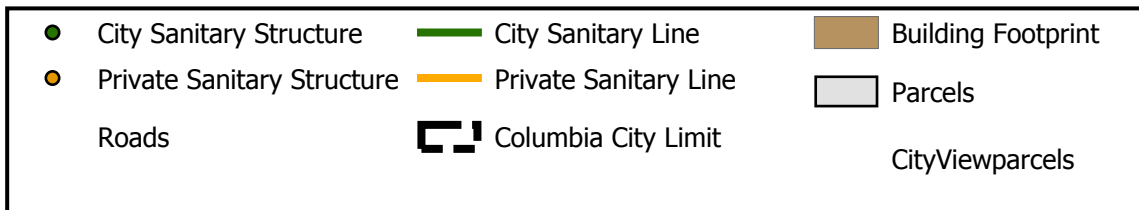
Parcel Data Source: Boone County Assessor

2015 Imagery: Boone County Assessor's Office

Hillshade Data: Boone County GIS Office



#17-178: Northern Heights Subdivision Plat 2A Final Plat



Created by The City of Columbia - Community Development Department

Parcel Data Source: Boone County Assessor

2015 Imagery: Boone County Assessor's Office

Hillshade Data: Boone County GIS Office