

CONSTRUCTION PLANS
VANDIVER ROAD SIDEWALK

TAP 2101514

EXISTING SURVEY LEGEND

LINWORK

SS	SANITARY SEWER	949	INTERMEDIATE CONTOUR
FM	SANITARY SEWER FORCE MAIN	950	INDEX CONTOUR
ST	STORM SEWER	---	PROPERTY LINE
W	WATER	ROW	RIGHT OF WAY
E	UNDERGROUND ELECTRIC	---	SECTION LINE
OE	OVERHEAD ELECTRIC	---	EASEMENT
C	UNDERGROUND COMMUNICATIONS	---	GUARD RAIL
OC	OVERHEAD COMMUNICATIONS	X	FIELD FENCE
T	UNDERGROUND TELEPHONE	---	CHAIN LINK FENCE
OT	OVERHEAD TELEPHONE	---	WOODEN FENCE
FO	UNDERGROUND FIBER OPTIC	+++++	SILT FENCE
OFO	OVERHEAD FIBER OPTIC	AG	AGRICULTURE LINE
TV	UNDERGROUND TV/CABLE	---	EDGE OF TREES
OTV	OVERHEAD TV/CABLE	---	TOP/BOTTOM OF SLOPE
G	GAS	---	ROAD CENTERLINE
TR	TRAFFIC	---	WATERWAY FLOWLINE

UTILITY QUALITY LEVELS:

UTILITY QUALITY LEVELS ARE BASED ON THE CI/ASCE 38-02 STANDARD.

UTILITY QUALITY LEVEL A:

PRECISE HORIZONTAL AND VERTICAL LOCATION OF UTILITIES OBTAINED BY THE ACTUAL EXPOSURE (OR VERIFICATION OF PREVIOUSLY EXPOSED AND SURVEYED UTILITIES) AND SUBSEQUENT MEASUREMENT OF SUBSURFACE UTILITIES

UTILITY QUALITY LEVEL B:

INFORMATION OBTAINED THROUGH THE APPLICATION OF APPROPRIATE SURFACE GEOPHYSICAL METHODS TO DETERMINE THE EXISTENCE AND APPROXIMATE HORIZONTAL POSITION OF SUBSURFACE UTILITIES.

UTILITY QUALITY LEVEL C:

INFORMATION OBTAINED BY SURVEYING AND PLOTTING VISIBLE ABOVE-GROUND UTILITY FEATURES AND BY USING PROFESSIONAL JUDGEMENT IN CORRELATING THIS INFORMATION TO QUALITY LEVEL D INFORMATION.

UTILITY QUALITY LEVEL D:

INFORMATION DERIVED FROM EXISTING RECORDS OR ORAL RECOLLECTIONS.

ADDITIONALLY IN THE CASE OF MULTIPLE OWNERS OF THE SAME UTILITY TYPE SAID UTILITIES WILL BE ABBREVIATED WITH AN OWNER NUMBER (1, 2, 3, ETC) AND REFERENCED IN THE IOWA ONE CALL UTILITY INFORMATION SECTION.

EXAMPLES:

C1(B)	UNDERGROUND COMMUNICATIONS- OWNER 1
C2(B)	UNDERGROUND COMMUNICATIONS- OWNER 2

TYPICAL HATCHING

SIDWALK (MATERIAL NOTED)	PERMEABLE PAVER
CONCRETE	WATER
ASPHALT	BUILDING OUTLINE
RIP RAP	SAND
GRAVEL	MULCH LANDSCAPING
GRASS	ROCK LANDSCAPING
TEMPORARY CONSTRUCTION EASEMENT	

ABBREVIATIONS

CP	CONTROL POINT	CI	CAST IRON PIPE
BM	BENCHMARK	DI	DUCTILE IRON PIPE
ROW	RIGHT-OF-WAY	CMP	CORRUGATED METAL PIPE
GU	GUTTER	HDPE	HIGH-DENSITY POLYETHYLENE PIPE
CL	CENTERLINE	VCP	VITRIFIED CLAY PIPE
ASPH	ASPHALT	PVC	POLYVINYL CHLORIDE PIPE
PCC	CONCRETE	RCP	REINFORCED CONCRETE PIPE
FL	FLOWLINE	UNK	UNKNOWN
RM	ELEVATION AT RIM	DH	DRILL HOLE
W/	WITH	RBC	REBAR W/ PLASTIC CAP
TYP	TYPICAL	IPC	IRON PIPE W/ PLASTIC CAP
FND	FOUND	MON	MONUMENT
FF	FINISHED FLOOR	PK	PK NAIL
		TCE	TEMPORARY CONSTRUCTION ESMT

ONE CALL UTILITY INFORMATION:

DESIGN INFORMATION REQUEST TICKET #: 232371747, 232371748, 232371782, 232371802, 232371803, 232414896, 232414897

ELECTRIC

AC	AIR CONDITIONING UNIT
BB	BREAKER BOX
E	ELECTRIC MANHOLE
EM	ELECTRIC METER
EP	ELECTRIC PEDESTAL
HP	HEAT PUMP
GAS	
GM	GAS MARKER
GM	GAS METER
GV	GAS VALVE

GENERAL SITE FEATURES

B	BOLLARD
FP	FLAGPOLE
FL	FLOOD LIGHT
GW	GUY WIRE
MB	MAILBOX
SD	SIGN- DOUBLE POST
SS	SIGN- SINGLE POST
SO	SOILBORE
SL	STREET LIGHT
UP	UTILITY POLE
UPS	UTILITY POLE W/STREET LIGHT
UM	UNKNOWN MANHOLE

MONUMENTS

B	BENCHMARK
BT	BENCHMARK (TEMPORARY)
CP	CONTROL POINT
CX	CUT X FOUND
CS	CUT X SET
MF	MONUMENT FOUND (FIRST TYPE)
MS	MONUMENT FOUND (SECOND TYPE)
MS	MONUMENT SET (FIRST TYPE)
MS	MONUMENT SET (SECOND TYPE)
SC	SECTION CORNER FOUND
SC	SECTION CORNER SET
TP	T POST
WP	WOODEN POST

RAILROAD

M	MAINLINE MILE MARKER
P	POINT OF SWITCH
RR	RAILROAD SIGNAL

SANITARY SEWER

C	SANITARY SEWER CLEANOUT
S	SANITARY SEWER MANHOLE
ST	SEPTIC TANK LID

UTILITY WARNING

THE UTILITIES DEPICTED ON THIS DOCUMENT HAVE BEEN LOCATED FROM FIELD SURVEY INFORMATION AND/OR RECORDS OBTAINED. THE SURVEYOR MAKES NO GUARANTEE THAT THE UTILITIES OR SUBSURFACE FEATURES SHOWN COMPRISE ALL SUCH ITEMS IN THE AREA, EITHER IN SERVICE OR ABANDONED. THE SURVEYOR FURTHER DOES NOT WARRANT THAT THE UTILITIES OR SUBSURFACE FEATURES SHOWN ARE IN THE EXACT LOCATION INDICATED EXCEPT WHERE NOTED AS QUALITY LEVEL A.

STORM SEWER

B	BEEHIVE INLET
DC	DOUBLE CURB INLET
SC	SINGLE CURB INLET
AD	AREA DRAINAGE INLET
FE	FLARED END SECTION
SM	STORM MANHOLE
SP	STAND PIPE
SC	STORM SEWER CLEANOUT
SO	SIDE OPENING AREA INLET

TELECOMMUNICATIONS

TH	COMPOSITE HANDHOLE
FM	FIBER OPTIC MARKER
SD	SATELLITE DISH
TM	TELEPHONE MANHOLE
TP	TELEPHONE PEDESTAL
TC	TV/CABLE BOX
TM	TV/CABLE MANHOLE

TRAFFIC

P	PEDESTRIAL SIGNAL
SC	SIGNAL CONTROL CABINET
TB	TRAFFIC BOX
TH	TRAFFIC HANDHOLE
TM	TRAFFIC MANHOLE
TS	TRAFFIC SIGNAL
TS	TRAFFIC SIGNAL W/STREET LIGHT

VEGETATION

C	CONIFEROUS TREE
D	DECIDUOUS TREE
S	SHRUB
TS	TREE STUMP

WATER

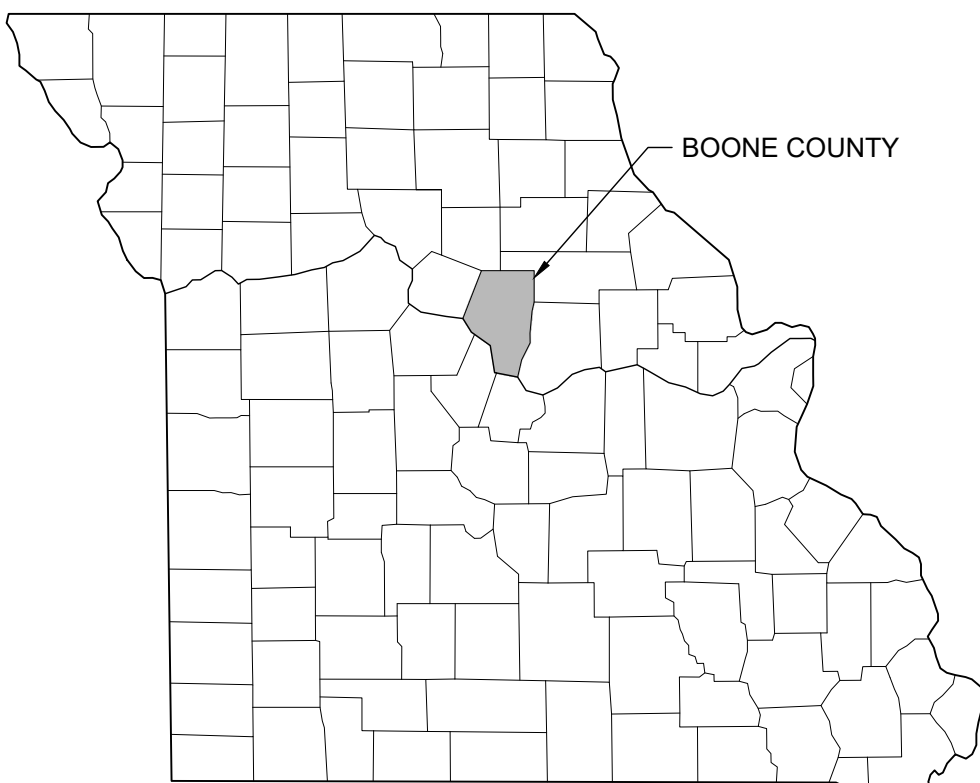
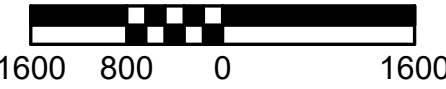
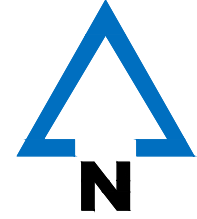
C	CURB STOP
F	FIRE HYDRANT
I	IRRIGATION VALVE
M	MONITORING WELL
P	POST INDICATOR VALVE
SB	SPRINKLER BOX
W	WATER MANHOLE
WM	WATER MARKER
WM	WATER METER
WS	WATER SPIGOT
WV	WATER VALVE
WM	WATER VALVE MANHOLE
YH	YARD HYDRANT

DEMOLITION

X	REMOVE TREE
---	-------------

SHEET INDEX

- # Title
- COVER
 - SUMMARY OF QUANTITIES
 - PROJECT CONTROL & ALIGNMENT
 - RIGHT OF WAY PLAN 1
 - RIGHT OF WAY PLAN 2
 - RIGHT OF WAY PLAN 3



KEY MAP

- ALL CONSTRUCTION TO BE IN ACCORDANCE WITH "CITY OF COLUMBIA STREET, STORM DRAIN AND SANITARY SEWER SPECIFICATIONS AND STANDARDS" (CURRENT EDITION).
- KNOWN UNDERGROUND UTILITIES ARE SHOWN IN THEIR APPROXIMATE LOCATIONS. OTHER UTILITIES MAY EXIST.
- ALL EXCAVATION TO BE IN ACCORDANCE WITH SECTIONS 319.010-319.050, REVISED STATUTES OF THE STATE OF MISSOURI. SUCH COMPLIANCE SHALL NOT, HOWEVER, EXCUSE ANY PERSON MAKING ANY EXCAVATION FROM DOING SO IN A CAREFUL AND PRUDENT MANNER, NOR SHALL IT EXCUSE SUCH PERSON FROM LIABILITY FOR ANY DAMAGE OR INJURY TO UNDERGROUND UTILITIES RESULTING FROM THE EXCAVATION.
- ALL DISTURBED EARTH AREAS SHALL BE RESTORED AS PER TS-... SEEDING AND TS-... EROSION CONTROL.
- REMOVE ALL PAVEMENT SURFACES, INLETS, PIPES AND SIDEWALKS WITHIN THE CONSTRUCTION LIMITS AS PER TS-... EXCEPT THOSE NOTED TO REMAIN. THE FIELD INSPECTOR SHALL VERIFY REMOVAL OF ALL DRIVEWAY PAVEMENT.
- REMOVAL OF TREES AND BUSHES SHALL BE VERIFIED BY FIELD INSPECTORS. EXERCISE CAUTION WHEN WORKING NEAR THE CONSTRUCTION LIMITS TO MINIMIZE DISTURBANCE TO ADJACENT TREES AND SHRUBS THAT ARE NOT BEING REMOVED BY CONSTRUCTION ACTIVITIES.
- NO OPEN TRENCHES WILL BE ALLOWED OVERNIGHT. ASPHALTIC "COLD MIX" SHALL BE USED AS A TEMPORARY PATCH OVERNIGHT. TEMPORARY PATCHING SHALL BE CONSIDERED INCIDENTAL TO THE WORK.

UTILITY CONTACTS

ELECTRIC	NATURAL GAS
CITY OF COLUMBIA, WATER & LIGHT 701 E. BROADWAY COLUMBIA, MISSOURI 65201 573-874-2489	AMEREN MISSOURI 2001 MAGUIRE BLVD. COLUMBIA, MISSOURI 65201 573-876-3028
ELECTRIC	SEWER
BOONE ELECTRIC COOPERATIVE 1413 RANGELINE STREET COLUMBIA, MO 65201 573-449-4181	CITY OF COLUMBIA, SEWER UTILITY 701 E. BROADWAY COLUMBIA, MISSOURI 65201 573-874-2489
WATER	SEWER
CITY OF COLUMBIA, WATER & LIGHT 701 E. BROADWAY COLUMBIA, MISSOURI 65201 573-874-2489	BOONE COUNTY REGIONAL SEWER DISTRICT 1314 N. 7TH STREET COLUMBIA, MO 65201 573-443-2774
WATER	TELECOMMUNICATION
PUBLIC WATER SUPPLY DISTRICT #9 391 E. BROADWAY COLUMBIA, MISSOURI 65201 573-474-9521	SOCKET TELECOM 2703 CLARK LANE COLUMBIA, MISSOURI 65202 573-817-0000
TELECOMMUNICATION	TELECOMMUNICATION
AT&T TRANSMISSION 800-252-1113	BRIGHTSPEED 833-363-2360



McCLURE™

2001 W. Broadway
Columbia, MO 65203
P 573-814-1568
F 573-814-1128

Ankeny, IA | Carroll, IA
Cedar Rapids, IA | Clive, IA
Corahville, IA | Council Bluffs, IA
Fort Dodge, IA | Sioux City, IA

Columbia, MO | Macon, MO
North Kansas City, MO | Springfield, MO

Lenexa, KS
Portsmouth, NH

NOTICE:
McClure Engineering Co. is not responsible or liable for any issues, claims, damages, or losses (collectively, "Losses") which arise from failure to follow these Plans, Specifications, and the engineering intent they convey, or for Losses which arise from failure to obtain and/or follow the engineers' or surveyors' guidance with respect to any alleged errors, omissions, inconsistencies, ambiguities, or conflicts contained within the Plans and Specifications.

MISSOURI CERTIFICATE OF
AUTHORITY NO. E-2006023253
EXPIRES: DECEMBER 31, 2026

** PRELIMINARY **
NOT FOR
CONSTRUCTION

Joseph Tuey
MO PE-2023031972
February 21, 2025

REVISIONS

PROJECT INFO
2023002046

ENGINEER DRAWN BY CHECKED BY
JHT SMH RAF

VANDIVER ROAD SIDEWALK
COLUMBIA, MISSOURI
TAP 2101514

COVER

DRAWING NO.

1

CALL OR CLICK 3 DAYS BEFORE YOU DIG!
1-800-DIG-RITE OR 811
MISSOURI ONE CALL SYSTEM
www.mo1call.com



Mission
Provide safe, sustainable
infrastructure that promotes
positive communities.


701 East Broadway
P.O. Box 6015
Columbia, MO 65205
(573) 875-2489

Shane Steven Creech
Registered Professional
Engineer
PE-2007011061

Approved By

Director of Public Works

Date



McCLURE™

2001 W. Broadway
Columbia, MO 65203
P 573-814-1568
F 573-814-1128

Ankeny, IA | Carroll, IA
Cedar Rapids, IA | Clive, IA
Coralville, IA | Council Bluffs, IA
Fort Dodge, IA | Sioux City, IA
Columbia, MO | Macon, MO
North Kansas City, MO | Springfield, MO
Lenexa, KS
Portsmouth, NH

NOTICE:
McClure Engineering Co. is not responsible or liable for any issues, claims, damages, or losses (collectively, "Losses") which arise from failure to follow these Plans, Specifications, and the engineering intent they convey, or for Losses which arise from failure to obtain and/or follow the engineers' or surveyors' guidance with respect to any alleged errors, omissions, inconsistencies, ambiguities, or conflicts contained within the Plans and Specifications.

MISSOURI CERTIFICATE OF AUTHORITY NO. E-2006023253
EXPIRES: DECEMBER 31, 2026

**** PRELIMINARY ****
NOT FOR CONSTRUCTION

Joseph Tuey
MO PE-2023031972
February 21, 2025

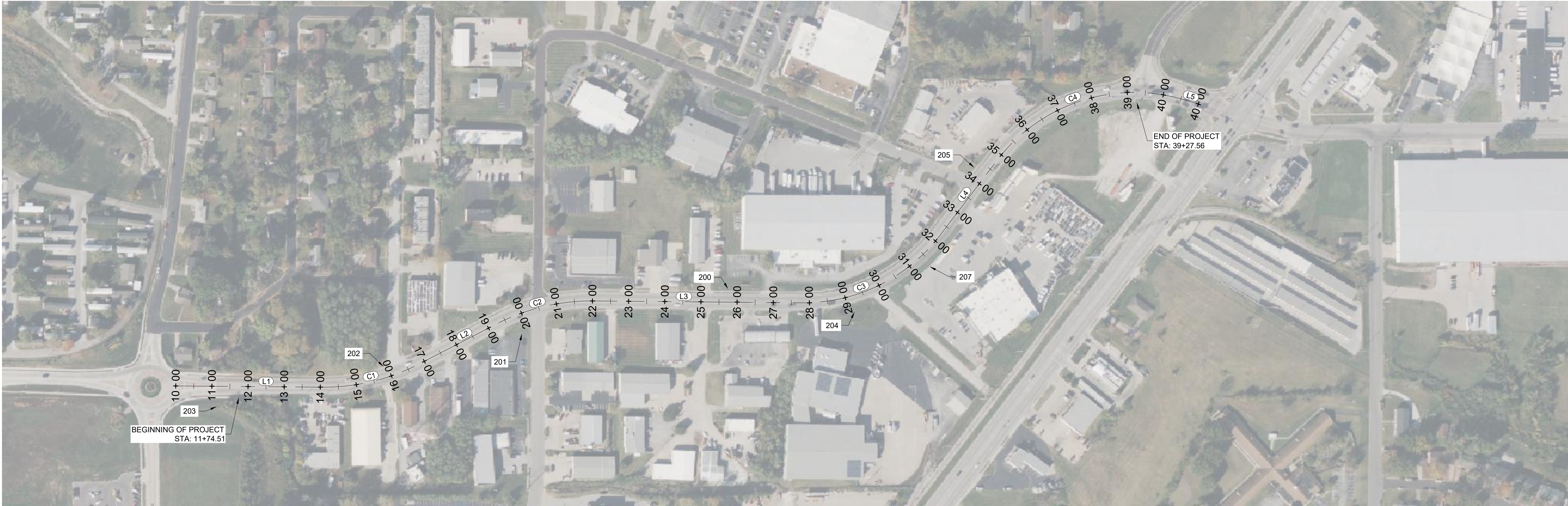
REVISIONS

PROJECT INFO
2023002046

ENGINEER	DRAWN BY	CHECKED BY
JHT	SMH	RAF

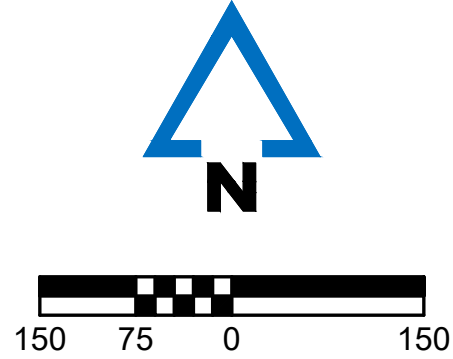
VANDIVER ROAD SIDEWALK
COLUMBIA, MISSOURI
TAP 2101514


SUMMARY OF QUANTITIES



ALIGNMENT TABLE						
NUMBER	STATION (START/END)	LENGTH	RADIUS	LINE/CHORD	START NORTHING/EASTING	END NORTHING/EASTING
C1	START:14+04.67 END:16+83.77	279.10	574.44	N76° 34' 22"E	N:1142511.69 E:1694038.71	N:1142575.86 E:1694307.52
C2	START:19+24.25 END:22+02.99	278.74	572.98	N76° 35' 26"E	N:1142686.33 E:1694521.13	N:1142750.34 E:1694789.61
C3	START:27+78.77 END:32+21.81	443.03	476.33	N63° 52' 53"E	N:1142745.04 E:1695365.36	N:1142933.12 E:1695748.97
C4	START:34+80.02 END:40+63.36	583.34	477.47	N72° 14' 09"E	N:1143138.70 E:1695905.22	N:1143305.82 E:1696426.83
L1	START:10+00.00 END:14+04.67	404.67		S89°30'30"E	N:1142515.16 E:1693634.06	N:1142511.69 E:1694038.71
L2	START:16+83.77 END:19+24.25	240.48		N62°39'14"E	N:1142575.86 E:1694307.52	N:1142686.33 E:1694521.13
L3	START:22+02.99 END:27+78.77	575.78		S89°28'23"E	N:1142750.34 E:1694789.61	N:1142745.04 E:1695365.36
L4	START:32+21.81 END:34+80.02	258.22		N37°14'09"E	N:1142933.12 E:1695748.97	N:1143138.70 E:1695905.22
L5	START:40+63.36 END:40+99.96	36.59		S72°45'51"E	N:1143305.82 E:1696426.83	N:1143294.97 E:1696461.78

PROJECT CONTROL POINTS TABLE				
CP#	NORTHING	EASTING	ELEV.	DESCRIPTION
200	1142785.27	1695160.60	774.84'	/ 12 RBC
201	1142657.10	1694591.17	763.60'	/ 12 RBC
202	1142569.95	1694207.50	744.81'	/ 12 RBC
203	1142457.22	1693745.68	735.44'	/ 12 RBC
204	1142717.82	1695510.36	784.81'	/ 12 RBC
205	1143120.62	1695841.16	774.34'	/ 12 RBC
207	1142844.35	1695721.48	781.55'	/ PK





McCLURE™

2001 W. Broadway
Columbia, MO 65203
P 573-814-1568
F 573-814-1128

Ankeny, IA | Carroll, IA
Cedar Rapids, IA | Clive, IA
Corahville, IA | Council Bluffs, IA
Fort Dodge, IA | Sioux City, IA
Columbia, MO | Macon, MO
North Kansas City, MO | Springfield, MO

Lenexa, KS
Portsmouth, NH

NOTICE:
McClure Engineering Co. is not responsible or liable for any issues, claims, damages, or losses (collectively, "Losses") which arise from failure to follow these Plans, Specifications, and the engineering intent they convey, or for Losses which arise from failure to obtain and/or follow the engineers' or surveyors' guidance with respect to any alleged errors, omissions, inconsistencies, ambiguities, or conflicts contained within the Plans and Specifications.

MISSOURI CERTIFICATE OF AUTHORITY NO. E-2006023253
EXPIRES: DECEMBER 31, 2026

**** PRELIMINARY ****
NOT FOR CONSTRUCTION

Joseph Tuey
MO PE-2023031972
February 21, 2025

REVISIONS

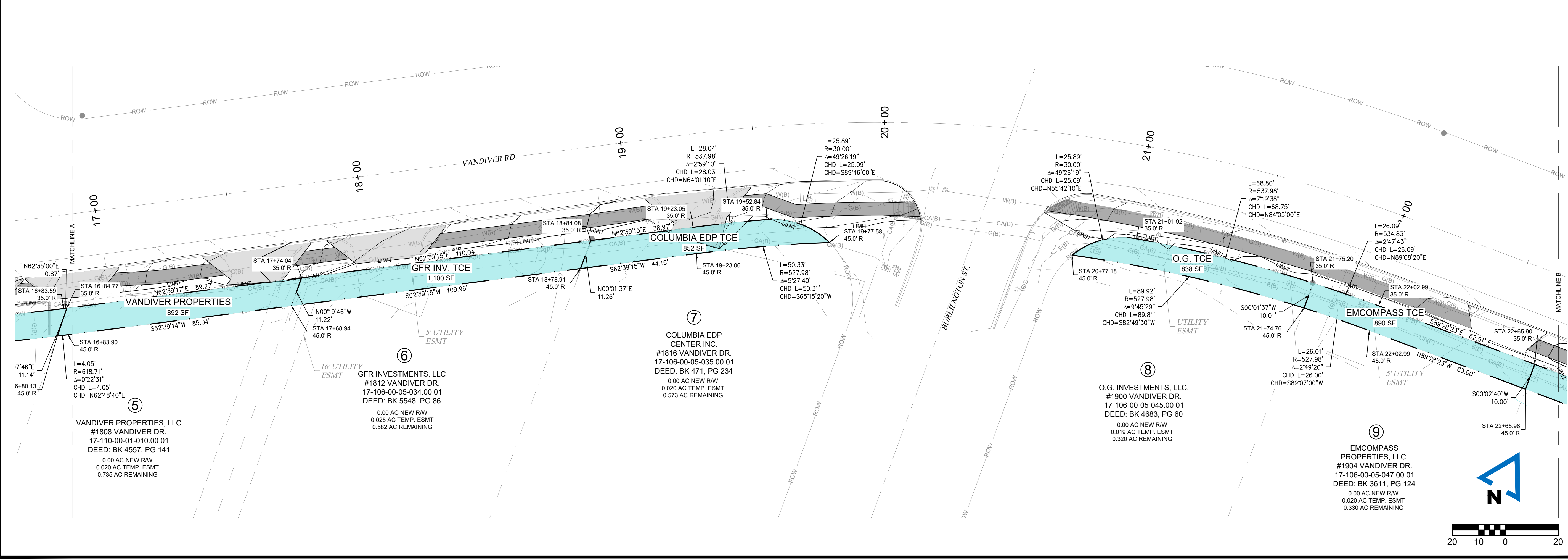
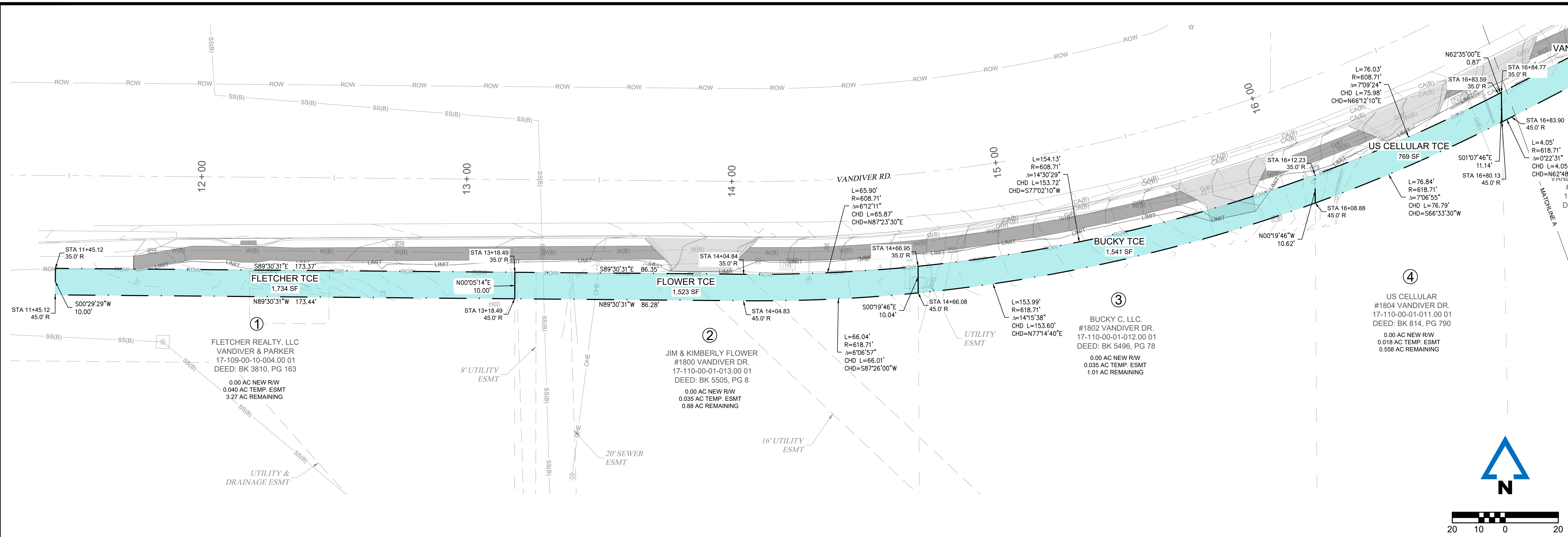
PROJECT INFO
2023002046


ENGINEER	DRAWN BY	CHECKED BY
JHT	SMH	RAF

VANDIVER ROAD SIDEWALK
COLUMBIA, MISSOURI
TAP 2101514

PROJECT CONTROL & ALIGNMENT

DRAWING NO.
3





McCLURE™

2001 W. Broadway
Columbia, MO 65203
P 573-814-1568
F 573-814-1128

Ankeny, IA | Carroll, IA
Cedar Rapids, IA | Clive, IA
Corahville, IA | Council Bluffs, IA
Fort Dodge, IA | Sioux City, IA
Columbia, MO | Macon, MO
North Kansas City, MO | Springfield, MO

Lenexa, KS
Portsmouth, NH

NOTICE:
McClure Engineering Co. is not responsible or liable for any issues, claims, damages, or losses (collectively, "Losses") which arise from failure to follow these Plans, Specifications, and the engineering intent they convey, or for Losses which arise from failure to obtain and/or follow the engineers' or surveyors' guidance with respect to any alleged errors, omissions, inconsistencies, ambiguities, or conflicts contained within the Plans and Specifications.

MISSOURI CERTIFICATE OF AUTHORITY NO. E-2006023253
EXPIRES: DECEMBER 31, 2026

**** PRELIMINARY ****
NOT FOR CONSTRUCTION

Joseph Tuey
MO PE-2023031972
February 21, 2025

REVISIONS

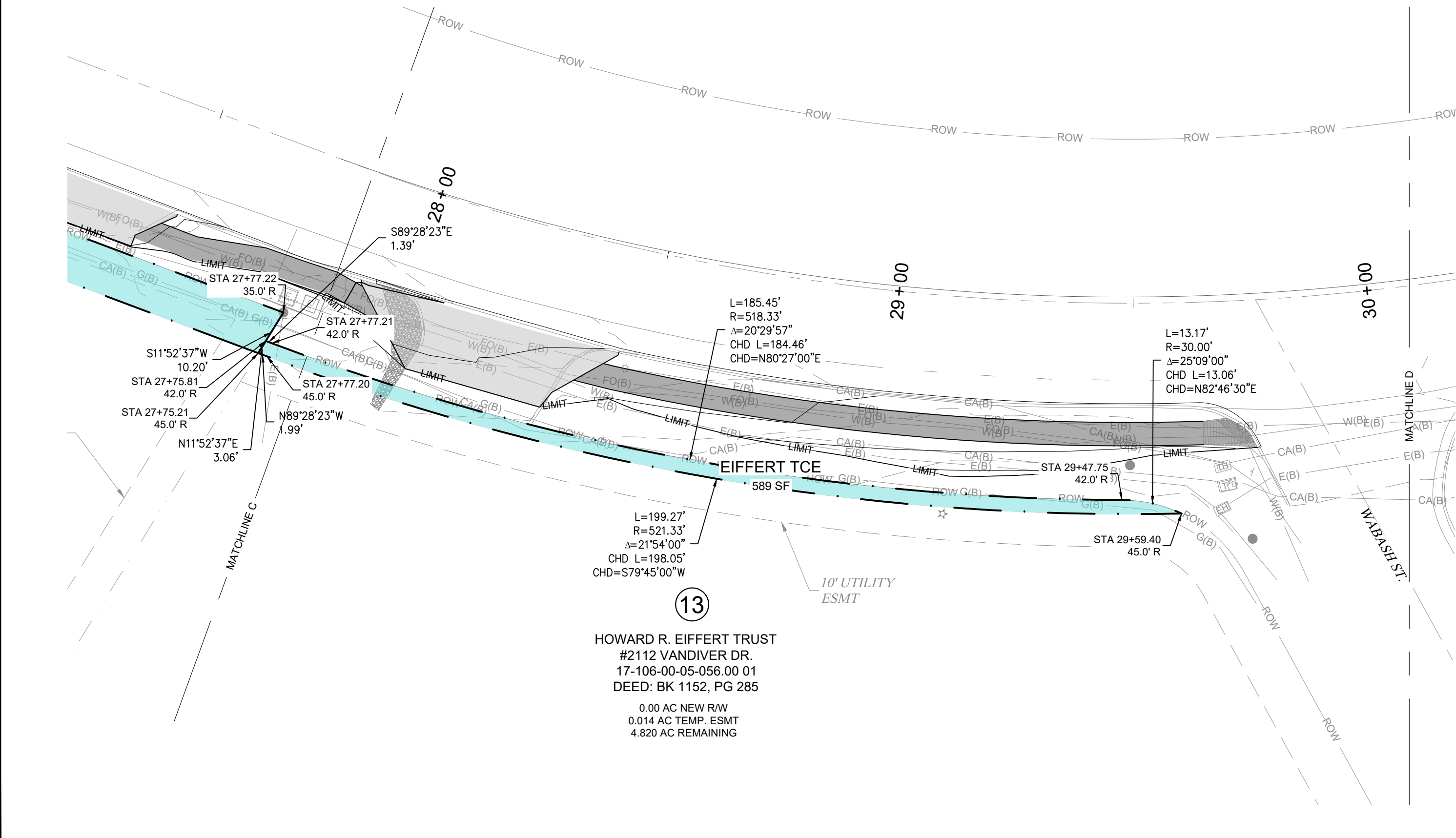
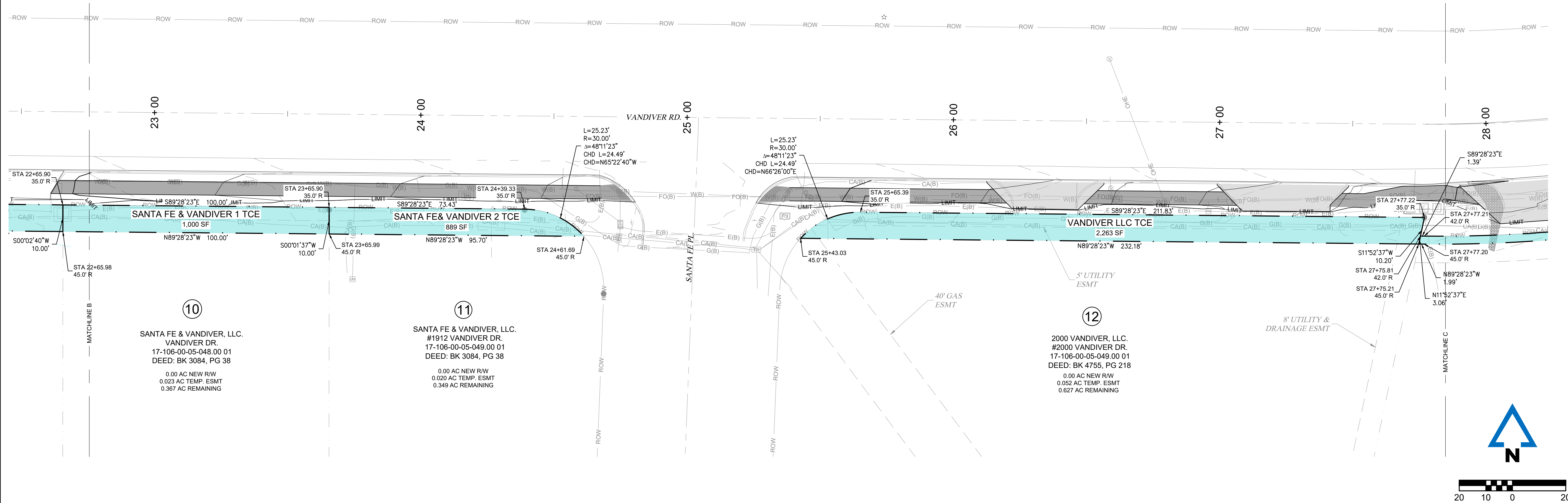
PROJECT INFO		
2023002046		
ENGINEER	DRAWN BY	CHECKED BY
JHT	SMH	RAF

**VANDIVER ROAD SIDEWALK
COLUMBIA, MISSOURI
TAP 2101514**

RIGHT OF WAY PLAN 1

DRAWING NO.
4

P:2023002046\04-DRAWINGS\05-PLANS\2023002046 ROW PLANS.DWG



McCLURE™

2001 W. Broadway
Columbia, MO 65203
P 573-814-1568
F 573-814-1128

Ankeny, IA | Carroll, IA
Cedar Rapids, IA | Clive, IA
Coralville, IA | Council Bluffs, IA
Fort Dodge, IA | Sioux City, IA
Columbia, MO | Macon, MO
North Kansas City, MO | Springfield, MO
Lenexa, KS
Portsmouth, NH

NOTICE:
McClure Engineering Co. is not responsible or liable for any issues, claims, damages, or losses (collectively, "Losses") which arise from failure to follow these Plans, Specifications, and the engineering intent they convey, or for Losses which arise from failure to obtain and/or follow the engineers' or surveyors' guidance with respect to any alleged errors, omissions, inconsistencies, ambiguities, or conflicts contained within the Plans and Specifications.

MISSOURI CERTIFICATE OF AUTHORITY NO. E-2006023253
EXPIRES: DECEMBER 31, 2026

**** PRELIMINARY ****
NOT FOR CONSTRUCTION

Joseph Tuey
MO PE-2023031972
February 21, 2025

REVISIONS		

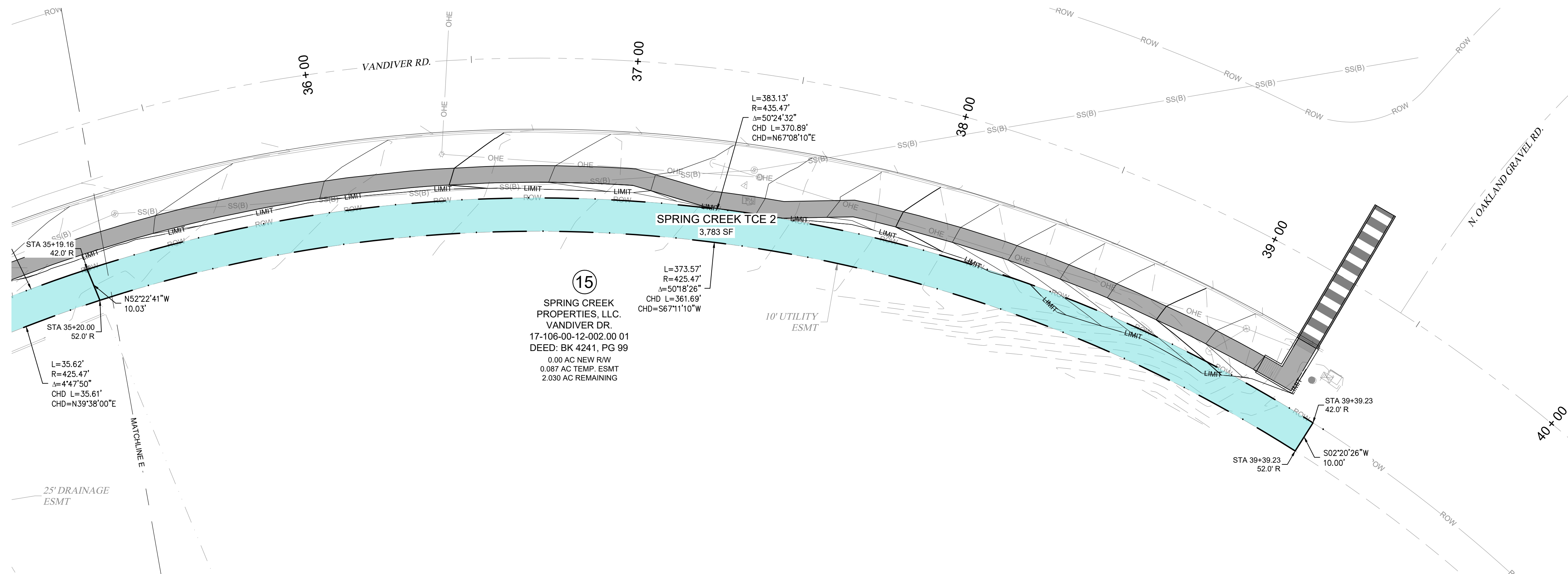
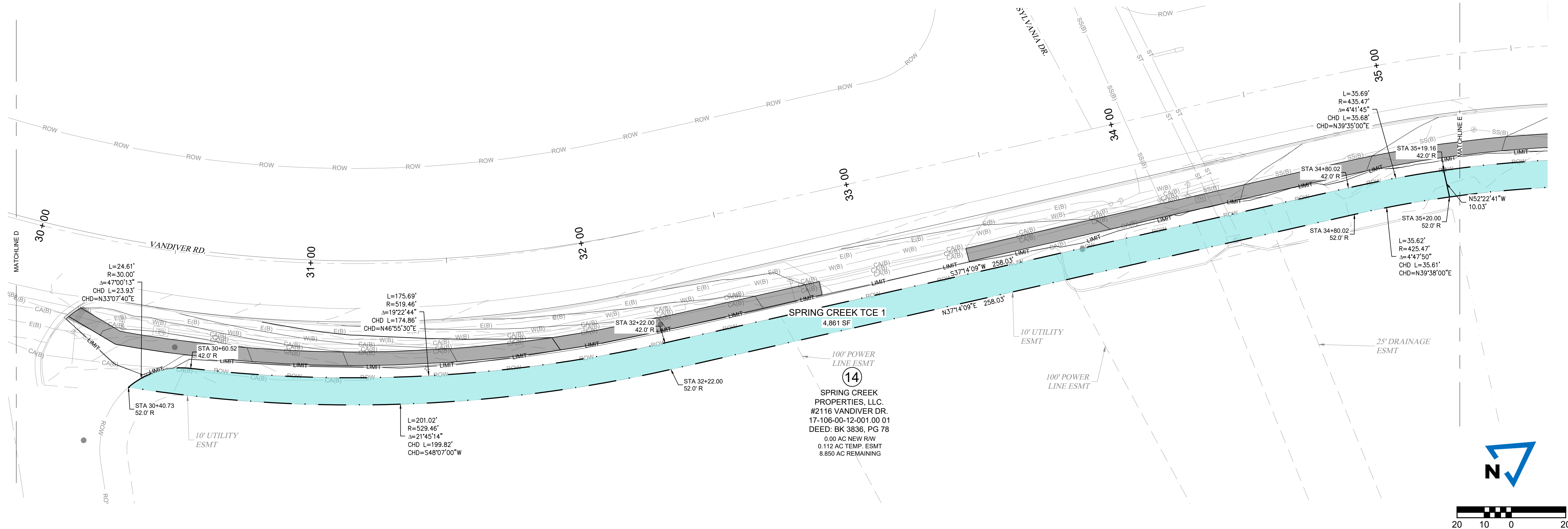
PROJECT INFO
2023002046

ENGINEER	DRAWN BY	CHECKED BY
JHT	SMH	RAF

VANDIVER ROAD SIDEWALK
COLUMBIA, MISSOURI
TAP 2101514

RIGHT OF WAY PLAN 2

DRAWING NO.
5



McCLURE™

2001 W. Broadway
Columbia, MO 65203
P 573-814-1568
F 573-814-1128

Ankeny, IA | Carroll, IA
Cedar Rapids, IA | Clive, IA
Coralville, IA | Council Bluffs, IA
Fort Dodge, IA | Sioux City, IA
Columbia, MO | Macon, MO
North Kansas City, MO | Springfield, MO
Lenexa, KS
Portsmouth, NH

NOTICE:
McClure Engineering Co. is not responsible or liable for any issues, claims, damages, or losses (collectively, "Losses") which arise from failure to follow these Plans, Specifications, and the engineering intent they convey, or for Losses which arise from failure to obtain and/or follow the engineers' or surveyors' guidance with respect to any alleged errors, omissions, inconsistencies, ambiguities, or conflicts contained within the Plans and Specifications.

MISSOURI CERTIFICATE OF AUTHORITY NO. E-2006023253
EXPIRES: DECEMBER 31, 2026

**** PRELIMINARY ****
NOT FOR CONSTRUCTION

Joseph Tuey
MO PE-2023031972
February 21, 2025

REVISIONS

PROJECT INFO		
2023002046		
ENGINEER	DRAWN BY	CHECKED BY
JHT	SMH	RAF

VANDIVER ROAD SIDEWALK
COLUMBIA, MISSOURI
TAP 2101514
RIGHT OF WAY PLAN 3

DRAWING NO.
6