

- ① CONSTRUCT 5' WIDE 4" THICK PCC SIDEWALK PER DETAIL 1
- ② REMOVE AND RECONSTRUCT RESIDENTIAL DRIVEWAY PER DETAIL 3
- ③ REMOVE TREE/BUSHES/STUMP
- ④ ADJUST VAVLE
- ⑤ REMOVE EXISTING INLET AND RECONSTRUCT SIDE OPENING INLET PER DETAIL 4 AND 6



City of Columbia, Missouri

Department of Public Works

McKee Street Sidewalk

Plan Sheet

David Allen Nichols
Registered Professional Engineer
E-24212

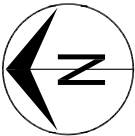
File No. -
Scale: 1" = 10'
Date: MARCH 2019
Des. E.M.F.
Dwn. E.M.F.
Chk. A.A.A.

Sheet
1 of 6

No.	Date	By	Revision

MATCHLINE STA. 2+00

- ① REMOVE EXISTING 4' SIDEWALK
- ② CONSTRUCT 5' WIDE 4" THICK PCC SIDEWALK PER DETAIL 1
- ③ REMOVE AND RECONSTRUCT RESIDENTIAL DRIVEWAY PER DETAIL 3
- ④ REMOVE AND RECONSTRUCT CONCRETE PAD
- ⑤ REMOVE TREE/BUSHES/STUMP
- ⑥ ADJUST VALVE

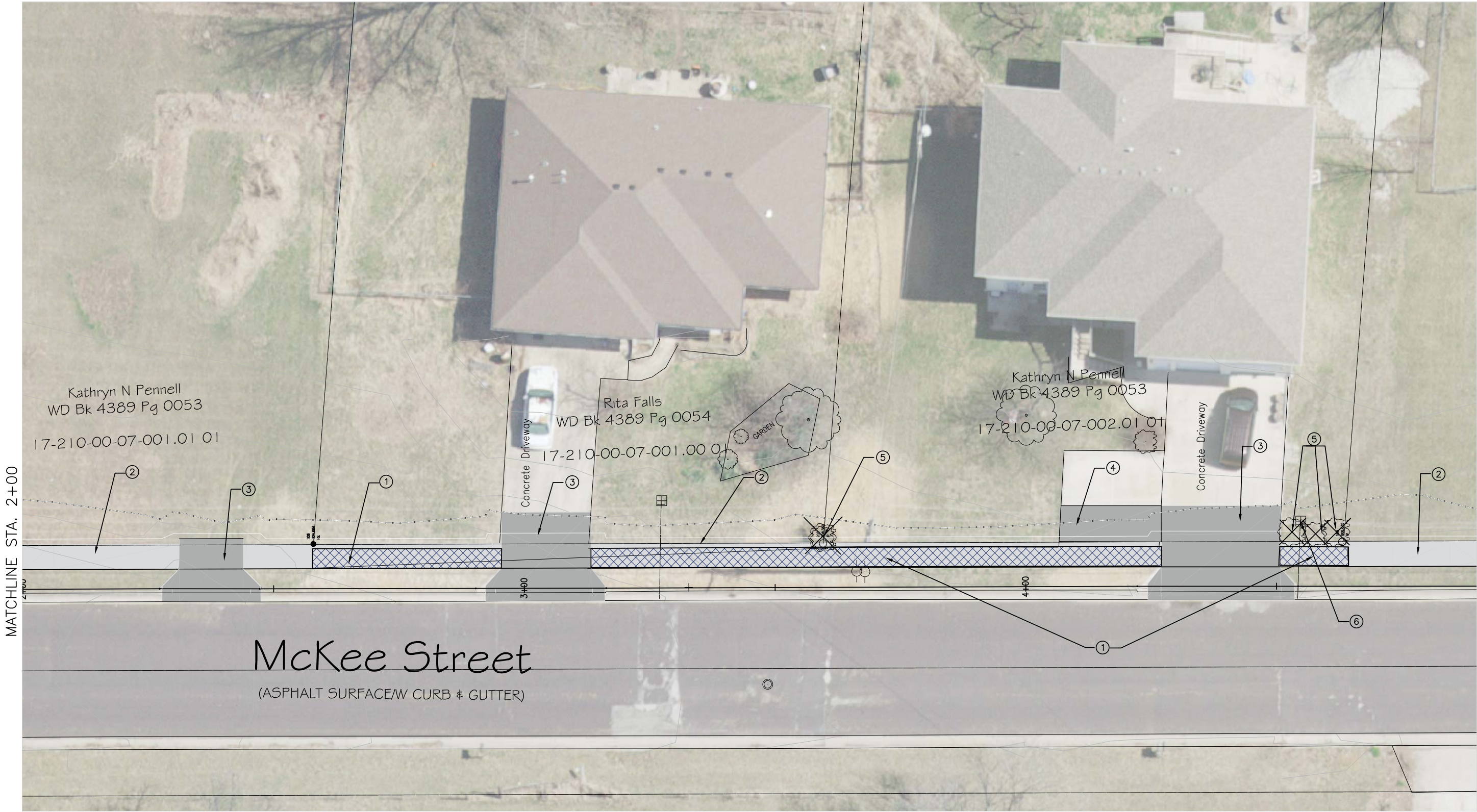


Revision		By	Date	No.

MCKEE STREET SIDEWALK
Plan Sheet

City of Columbia, Missouri	Department of Public Works
----------------------------	----------------------------

David Allen Nichols Registered Professional Engineer E-24212	
File No.	-
Scale:	1" = 10'
Date:	MARCH 2019
Des.	E.M.F.
Dwn.	E.M.F.
Chk.	A.A.A.



- ① CONSTRUCT 5' WIDE 4" THICK PCC SIDEWALK PER DETAIL 1

② REMOVE AND RECONSTRUCT RESIDENTIAL DRIVEWAY PER DETAIL 3

③ REMOVE TREE/BUSHES/STUMP

④ ADJUST VAVLE

⑤ REMOVE EXISTING INLET AND RECONSTRUCT SIDE OPENING INLET PER DETAIL 4 AND 7
- ⑥ REMOVE AND REPLACE FENCE

⑦ REPLACE STREET ENTRANCE

⑧ REMOVE AND RECONSTRUCT RESIDENTIAL SIDEWALK

⑨ REMOVE DRIVEWAY



No.	Date	By	Revision

MCKEE STREET SIDEWALK

Plan Sheet

City of Columbia, Missouri

Department of Public Works

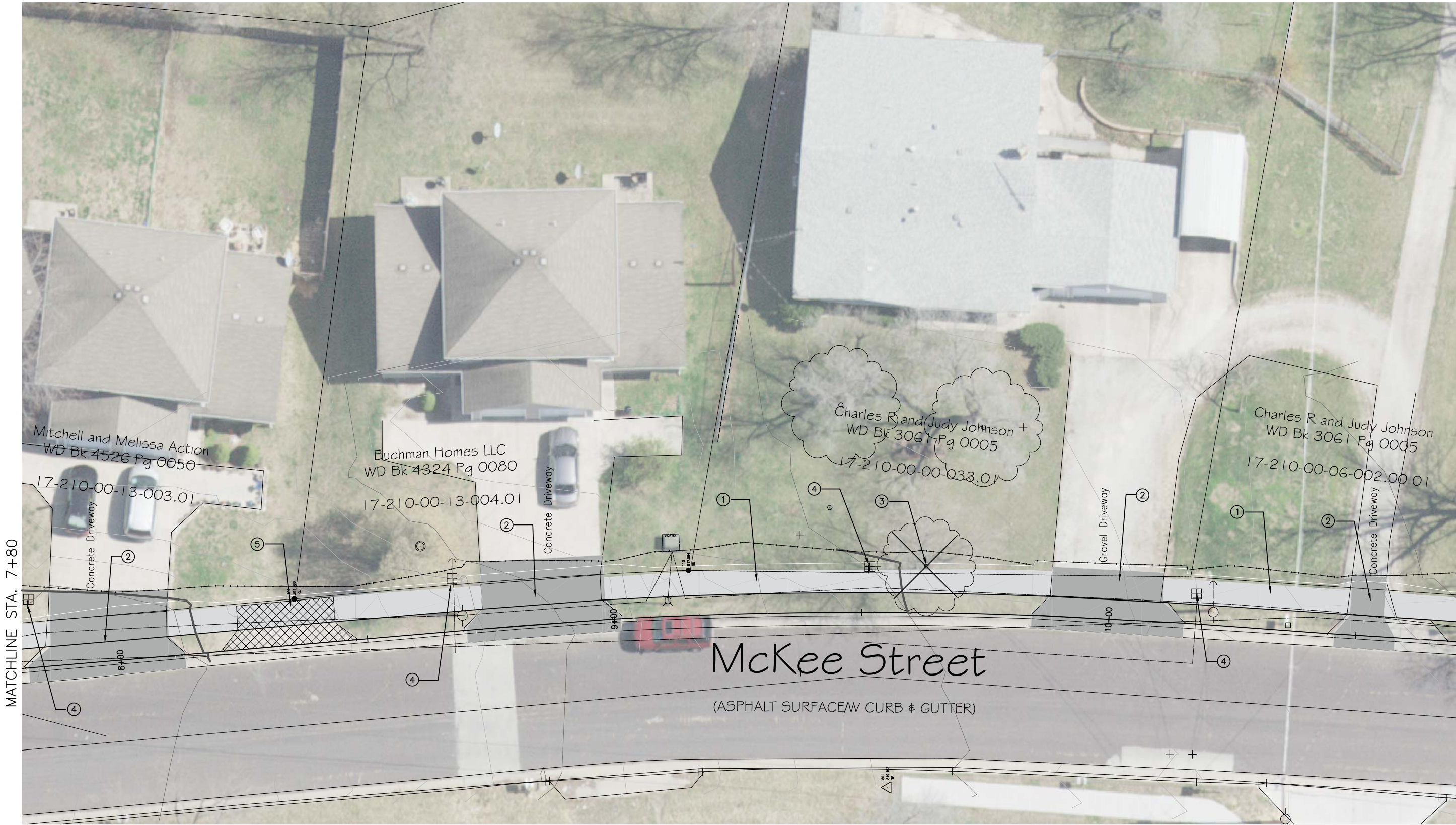
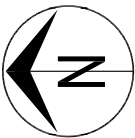
David Allen Nichols Registered Professional Engineer E-24212
File No. .
Scale: 1" = 10'
Date: MARCH 2019
Des. E.M.F.
Dwn. E.M.F.
Chk. A.A.A.

MATCHLINE STA. 4+90



MATCHLINE STA. 7+80

- ① CONSTRUCT 5' WIDE 4" THICK PCC SIDEWALK PER DETAIL 1
- ② REMOVE AND RECONSTRUCT RESIDENTIAL DRIVEWAY PER DETAIL 3
- ③ REMOVE TREE/BUSHES/STUMP
- ④ ADJUST VAVLE
- ⑤ REMOVE DRIVEWAY



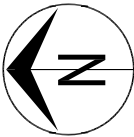
Revision		By	Date	No.

McKee Street Sidewalk
Plan Sheet

City of Columbia, Missouri	Department of Public Works
----------------------------	----------------------------

David Allen Nichols Registered Professional Engineer E-24212	
File No.	-
Scale:	1" = 10'
Date:	MARCH 2019
Des.	E.M.F.
Dwn.	E.M.F.
Chk.	A.A.A.

- ① CONSTRUCT 5' WIDE 4" THICK PCC SIDEWALK PER DETAIL 1
- ② REMOVE AND RECONSTRUCT RESIDENTIAL DRIVEWAY PER DETAIL 3
- ③ REMOVE TREE/BUSHES
- ④ ADJUST VAVLE



MATCHLINE STA. 10+70



No.	Date	By	Revision

MCKEE STREET SIDEWALK

Plan Sheet

City of Columbia, Missouri

Department of Public Works

David Allen Nichols
Registered Professional Engineer
E-24212

File No. -

Scale: 1" = 10'

Date: MARCH 2019

Des. E.M.F.

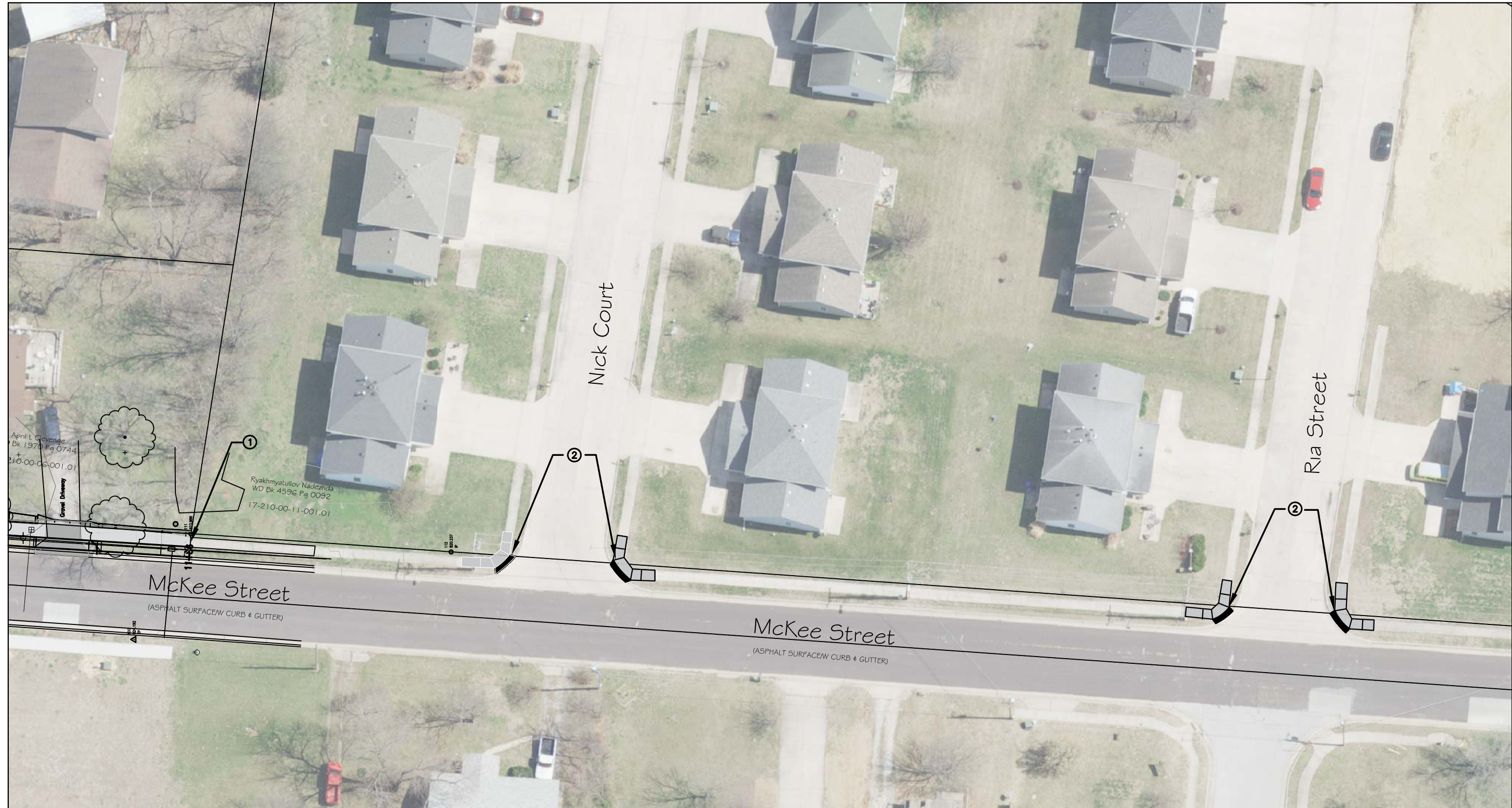
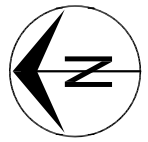
Dwn. E.M.F.

Chk. A.A.A.

Sheet

5 of 6

- ① END OF SIDEWALK PROJECT
- ② REMOVE EXISTING AND RECONSTRUCT RAMPS PER DETAIL 2 AND 7

[illegible]

MCKEE STREET SIDEWALK

City of Columbia, Missouri

Department of Public Works

David Allen Nichols
Registered Professional
Engineer
E-24212

File No. .

Scale: 1" = 20'

Date: MARCH 2019

Des.	E.M.F.
------	--------

Dwn.	E.M.F.
Ch. 1	1.11
Ch. 2	1.11
Ch. 3	1.11
Ch. 4	1.11
Ch. 5	1.11
Ch. 6	1.11
Ch. 7	1.11
Ch. 8	1.11
Ch. 9	1.11
Ch. 10	1.11
Ch. 11	1.11
Ch. 12	1.11
Ch. 13	1.11
Ch. 14	1.11
Ch. 15	1.11
Ch. 16	1.11
Ch. 17	1.11
Ch. 18	1.11
Ch. 19	1.11
Ch. 20	1.11
Ch. 21	1.11
Ch. 22	1.11
Ch. 23	1.11
Ch. 24	1.11
Ch. 25	1.11
Ch. 26	1.11
Ch. 27	1.11
Ch. 28	1.11
Ch. 29	1.11
Ch. 30	1.11
Ch. 31	1.11
Ch. 32	1.11
Ch. 33	1.11
Ch. 34	1.11
Ch. 35	1.11
Ch. 36	1.11
Ch. 37	1.11
Ch. 38	1.11
Ch. 39	1.11
Ch. 40	1.11
Ch. 41	1.11
Ch. 42	1.11
Ch. 43	1.11
Ch. 44	1.11
Ch. 45	1.11
Ch. 46	1.11
Ch. 47	1.11
Ch. 48	1.11
Ch. 49	1.11
Ch. 50	1.11
Ch. 51	1.11
Ch. 52	1.11
Ch. 53	1.11
Ch. 54	1.11
Ch. 55	1.11
Ch. 56	1.11
Ch. 57	1.11
Ch. 58	1.11
Ch. 59	1.11
Ch. 60	1.11
Ch. 61	1.11
Ch. 62	1.11
Ch. 63	1.11
Ch. 64	1.11
Ch. 65	1.11
Ch. 66	1.11
Ch. 67	1.11
Ch. 68	1.11
Ch. 69	1.11
Ch. 70	1.11
Ch. 71	1.11
Ch. 72	1.11
Ch. 73	1.11
Ch. 74	1.11
Ch. 75	1.11
Ch. 76	1.11
Ch. 77	1.11
Ch. 78	1.11
Ch. 79	1.11
Ch. 80	1.11
Ch. 81	1.11
Ch. 82	1.11
Ch. 83	1.11
Ch. 84	1.11
Ch. 85	1.11
Ch. 86	1.11
Ch. 87	1.11
Ch. 88	1.11
Ch. 89	1.11
Ch. 90	1.11
Ch. 91	1.11
Ch. 92	1.11
Ch. 93	1.11
Ch. 94	1.11
Ch. 95	1.11
Ch. 96	1.11
Ch. 97	1.11
Ch. 98	1.11
Ch. 99	1.11
Ch. 100	1.11

Chk.	A.A.A.
1	1
2	2
3	3
4	4
5	5
6	6
7	7
8	8
9	9
10	10
11	11
12	12
13	13
14	14
15	15
16	16
17	17
18	18
19	19
20	20
21	21
22	22
23	23
24	24
25	25
26	26
27	27
28	28
29	29
30	30
31	31
32	32
33	33
34	34
35	35
36	36
37	37
38	38
39	39
40	40
41	41
42	42
43	43
44	44
45	45
46	46
47	47
48	48
49	49
50	50
51	51
52	52
53	53
54	54
55	55
56	56
57	57
58	58
59	59
60	60
61	61
62	62
63	63
64	64
65	65
66	66
67	67
68	68
69	69
70	70
71	71
72	72
73	73
74	74
75	75
76	76
77	77
78	78
79	79
80	80
81	81
82	82
83	83
84	84
85	85
86	86
87	87
88	88
89	89
90	90
91	91
92	92
93	93
94	94
95	95
96	96
97	97
98	98
99	99
100	100

Sheet

6 of 6

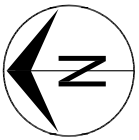
0 0 0



NOTE:

NOTES:

NOTE:



Revision	By	Date	No.

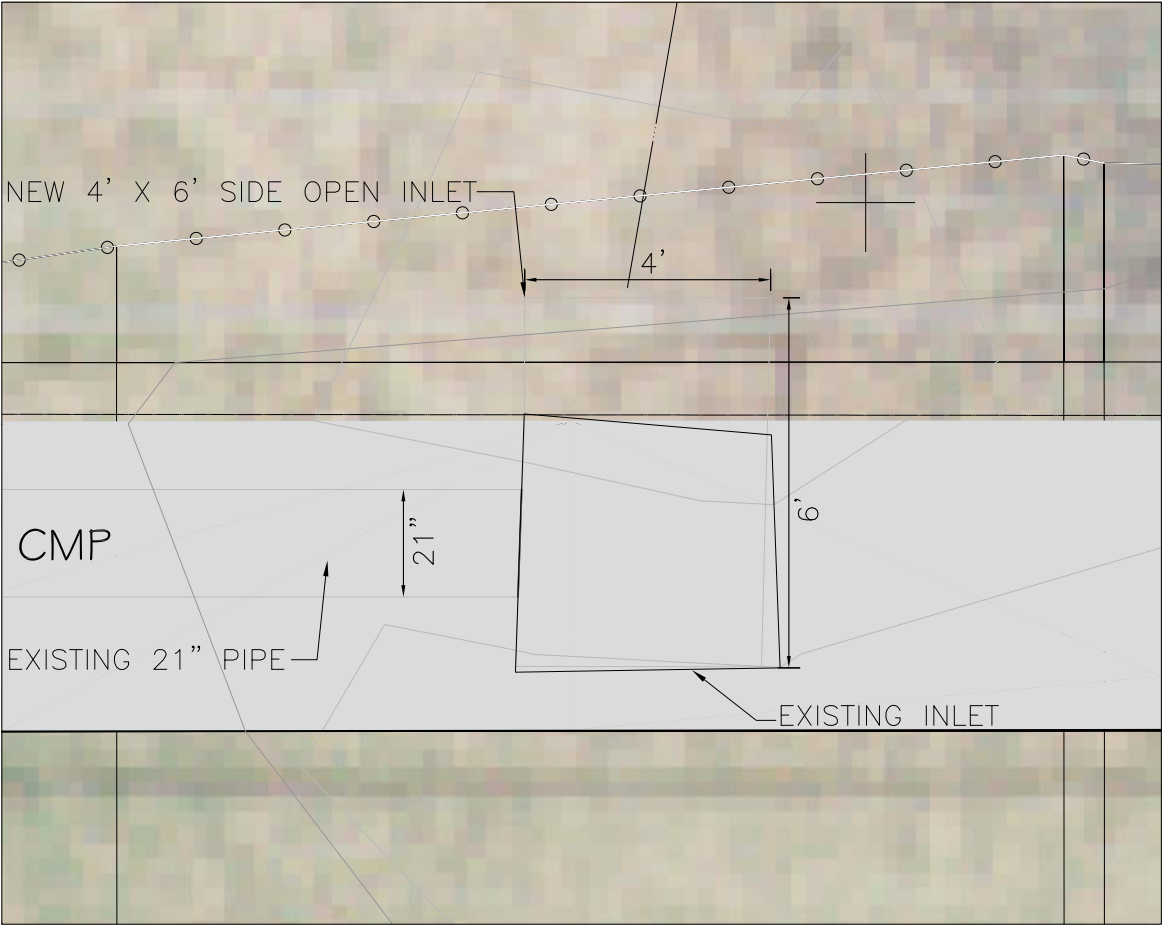
MCKEE STREET SIDEWALK
Detail Sheet

City of Columbia, Missouri

Department of Public Works

David Allen Nichols
Registered Professional Engineer
E-24212

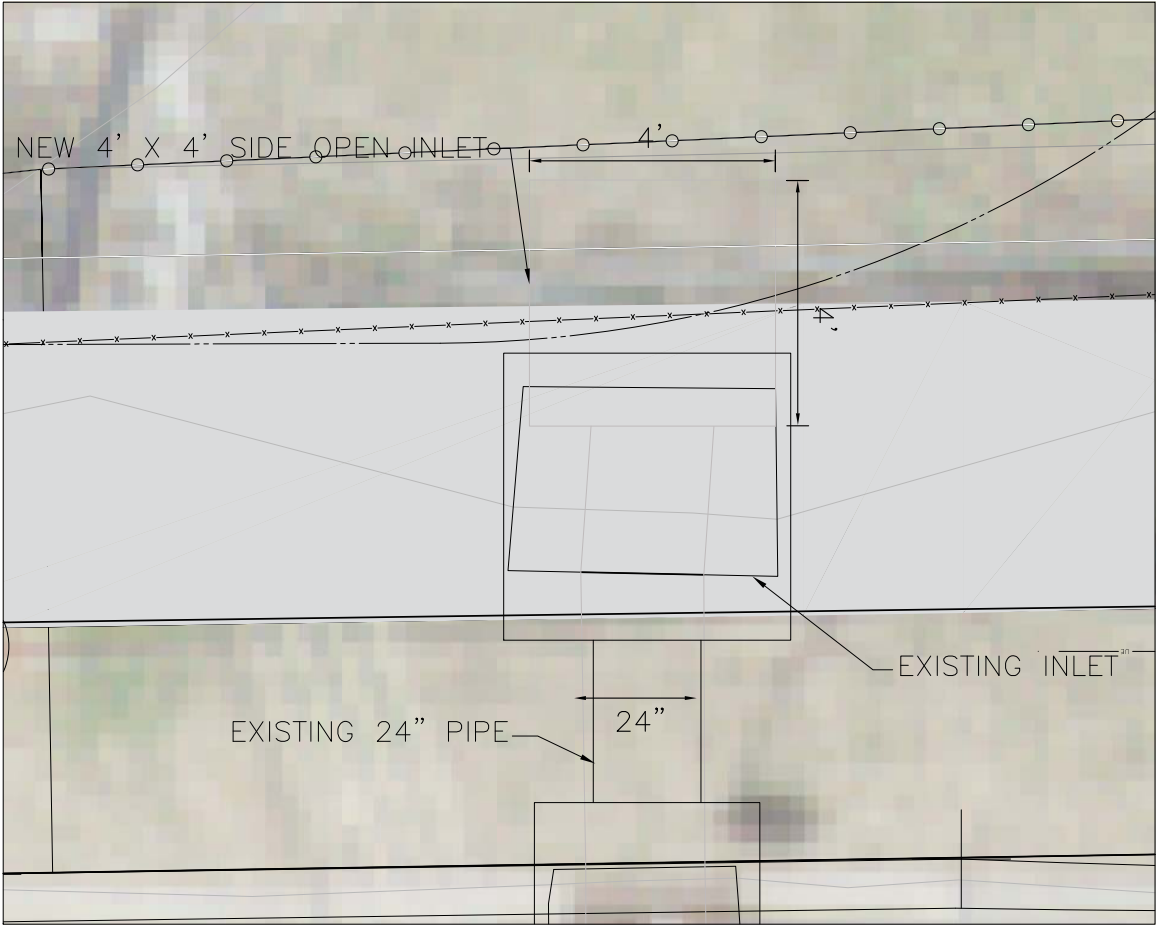
File No.	-
Scale:	
Date:	MARCH 2019
Des.	E.M.F.
Dwn.	E.M.F.
Chk.	A.A.A.



TOP OF INLET ELEVATION	794.0
SIDE OPENING FLOW LINE ELEVATION	792.7
PIPE FLOW LINE ELEVATION	790.45

- NOTES:
- 1.REMOVE EXISTING BOX AND REPLACE WITH 4'X6' SIDE OPEN INLET
 - 2.CONTRACTOR TO VERIFY ELEVATIONS AND DIMENSIONS. FIELD ADJUSTMENT MAY BE NECESSARY

DETAIL 6: INLET A INFORMATION
(NOT TO SCALE)



TOP OF INLET ELEVATION	804.4
SIDE OPENING FLOW LINE ELEVATION	803.1
PIPE FLOW LINE ELEVATION	800.6

- NOTES:
- 1.REMOVE EXISTING BOX AND REPLACE WITH 4'X4' SIDE OPEN INLET
 - 2.CONTRACTOR TO VERIFY ELEVATIONS AND DIMENSIONS. FIELD ADJUSTMENT MAY BE NECESSARY

DETAIL 7: INLET B INFORMATION
(NOT TO SCALE)