

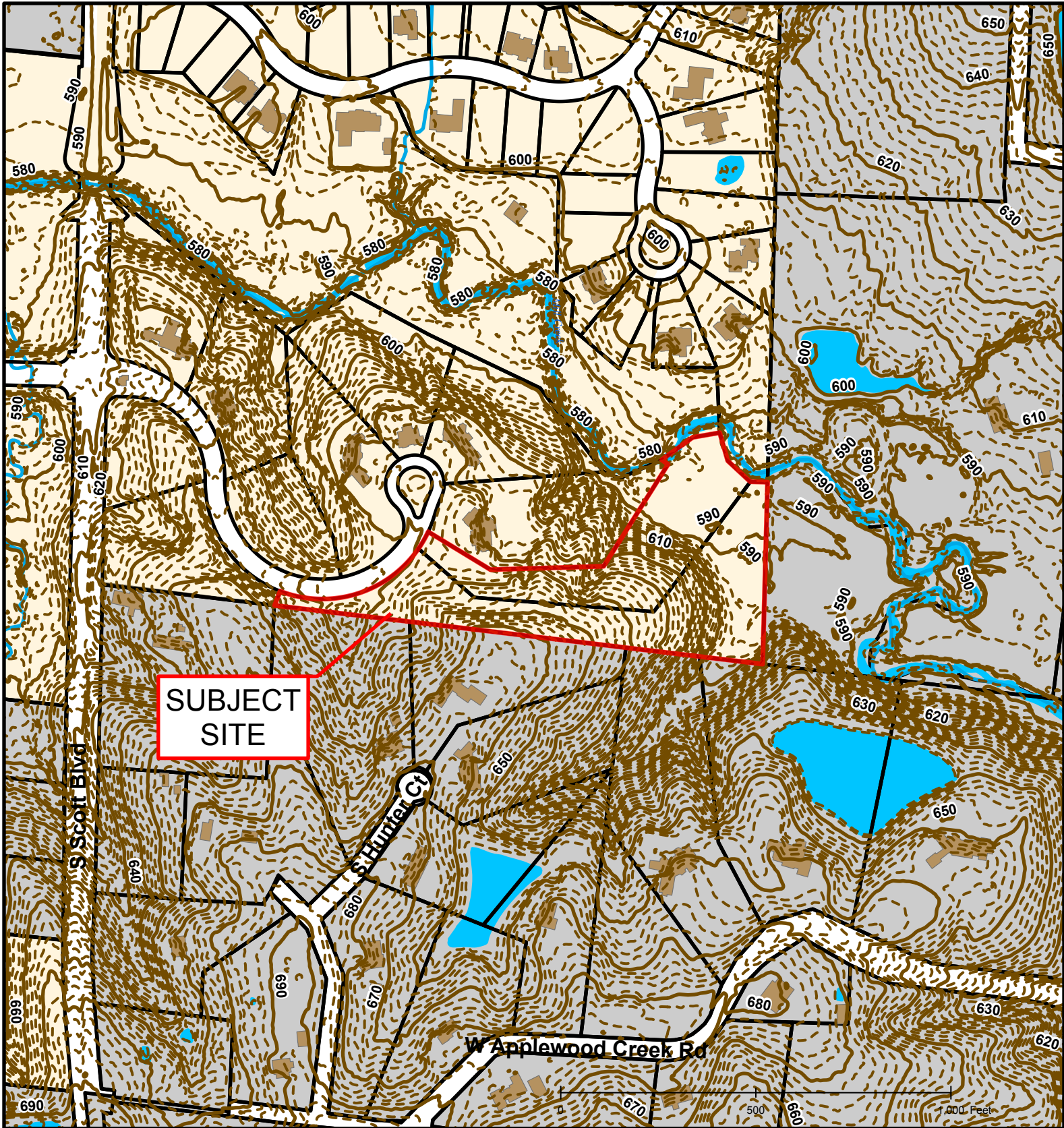


#18-142: Copperstone Plat 1A Final Plat

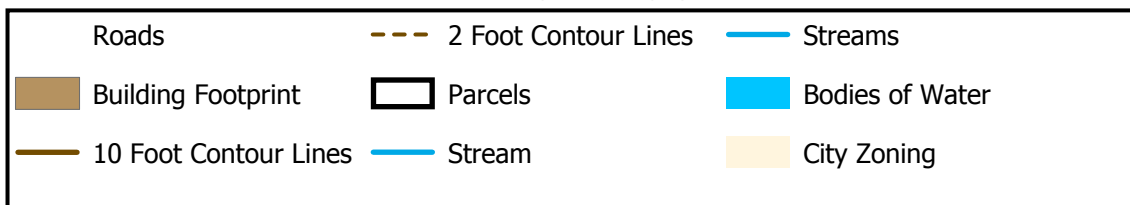


Roads	Boone County Zoning
City Zoning	Columbia City Limit
Parcels	CityViewparcels





#18-142: Copperstone Plat 1A Final Plat

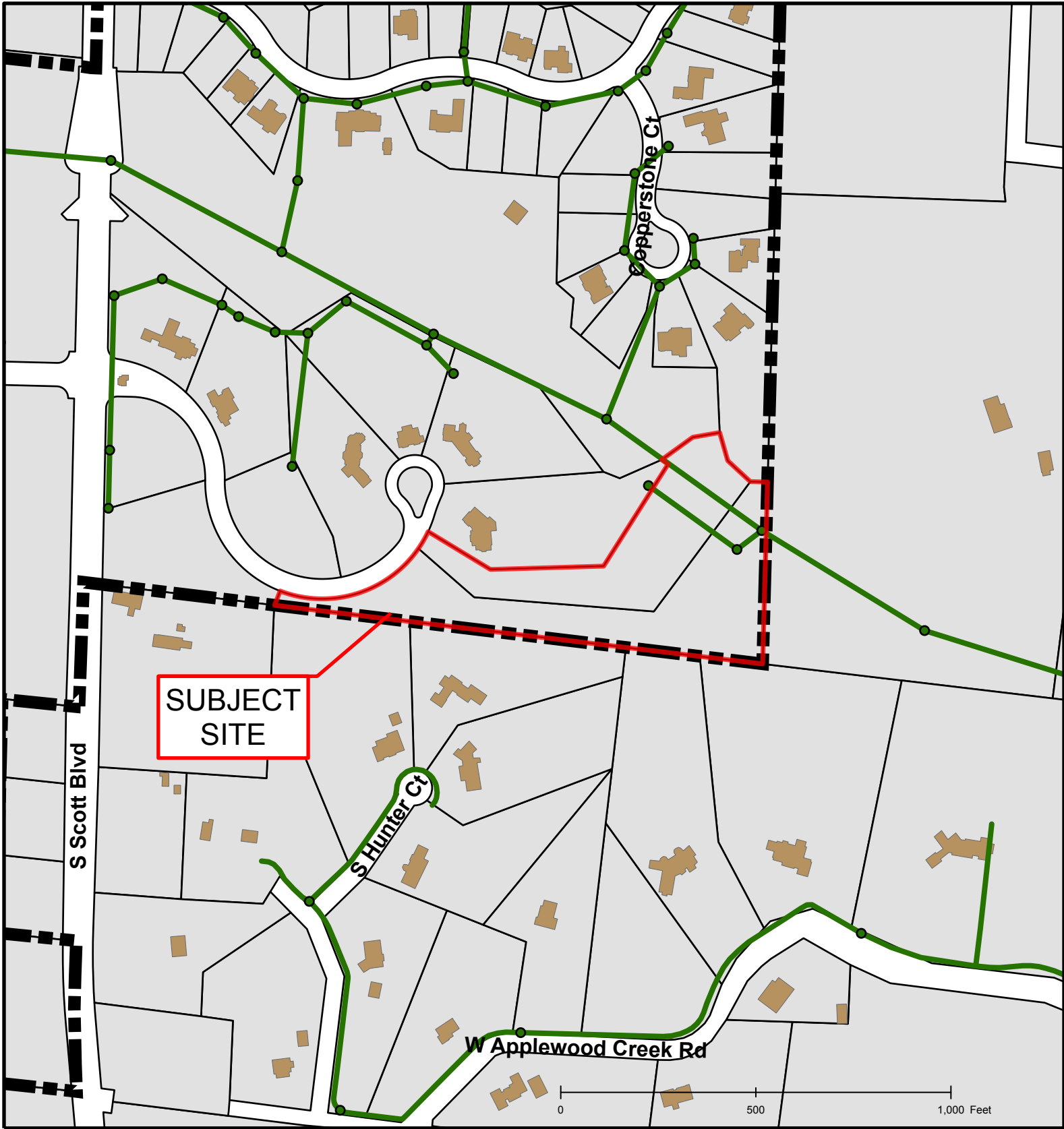


Created by The City of Columbia - Community Development Department

Parcel Data Source: Boone County Assessor

2015 Imagery: Boone County Assessor's Office

Hillshade Data: Boone County GIS Office



#18-142: Copperstone Plat 1A Final Plat



Created by The City of Columbia - Community Development Department

Parcel Data Source: Boone County Assessor

2015 Imagery: Boone County Assessor's Office

Hillshade Data: Boone County GIS Office