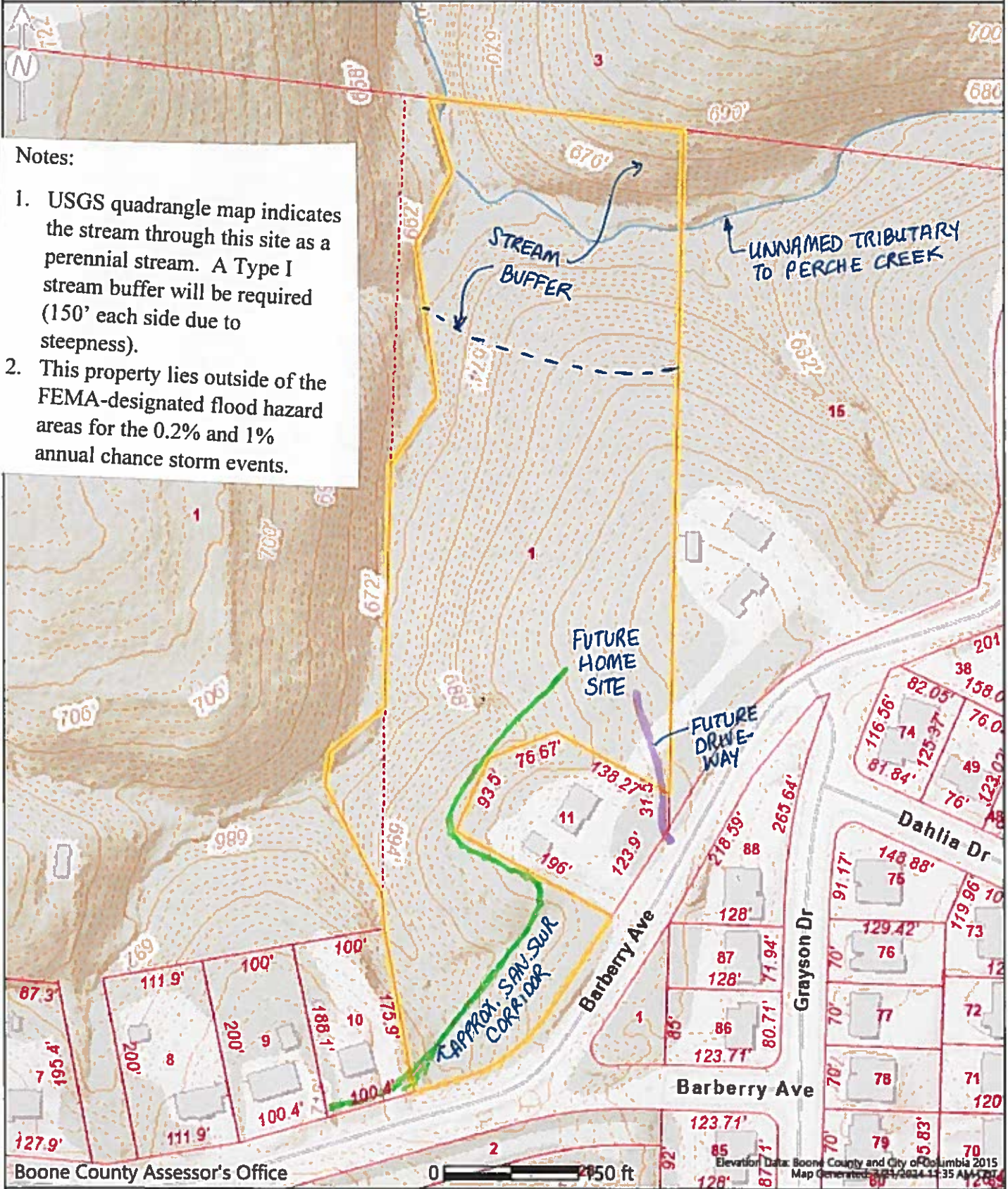


Parcel Information Viewer Map

Prepared by the Boone County Assessor's Office, (573) 886-4262

Notes:

- 1. USGS quadrangle map indicates the stream through this site as a perennial stream. A Type I stream buffer will be required (150' each side due to steepness).
- 2. This property lies outside of the FEMA-designated flood hazard areas for the 0.2% and 1% annual chance storm events.



Boone County Assessor's Office

0 250 ft

Elevation Data: Boone County and City of Columbia 2015
Map Generated: 3/21/2024 11:35 AM CST

ATTENTION!!
DISCLAIMER: READ CAREFULLY: These maps were prepared for the inventory of real property based on the utilization of deeds, plans, and/or supportive data. In addition, map files are frequently changed to reflect changes in boundaries, lot lines and other geographic features resulting from changes in ownership, development and other causes. The existence, dimension, and location of features, as well as other information, should not be relied upon for any purpose without actual field verification. The County of Boone makes no warranty of any kind concerning the completeness or accuracy of information contained on these maps and assumes no liability or responsibility for the use or reuse of these maps by persons not affiliated with Boone County. Use of these maps by any person not affiliated with Boone County constitutes agreement by the user to assume full liability and responsibility for the verification of the accuracy of information shown on these maps.