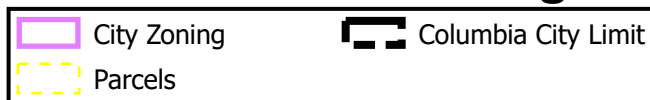
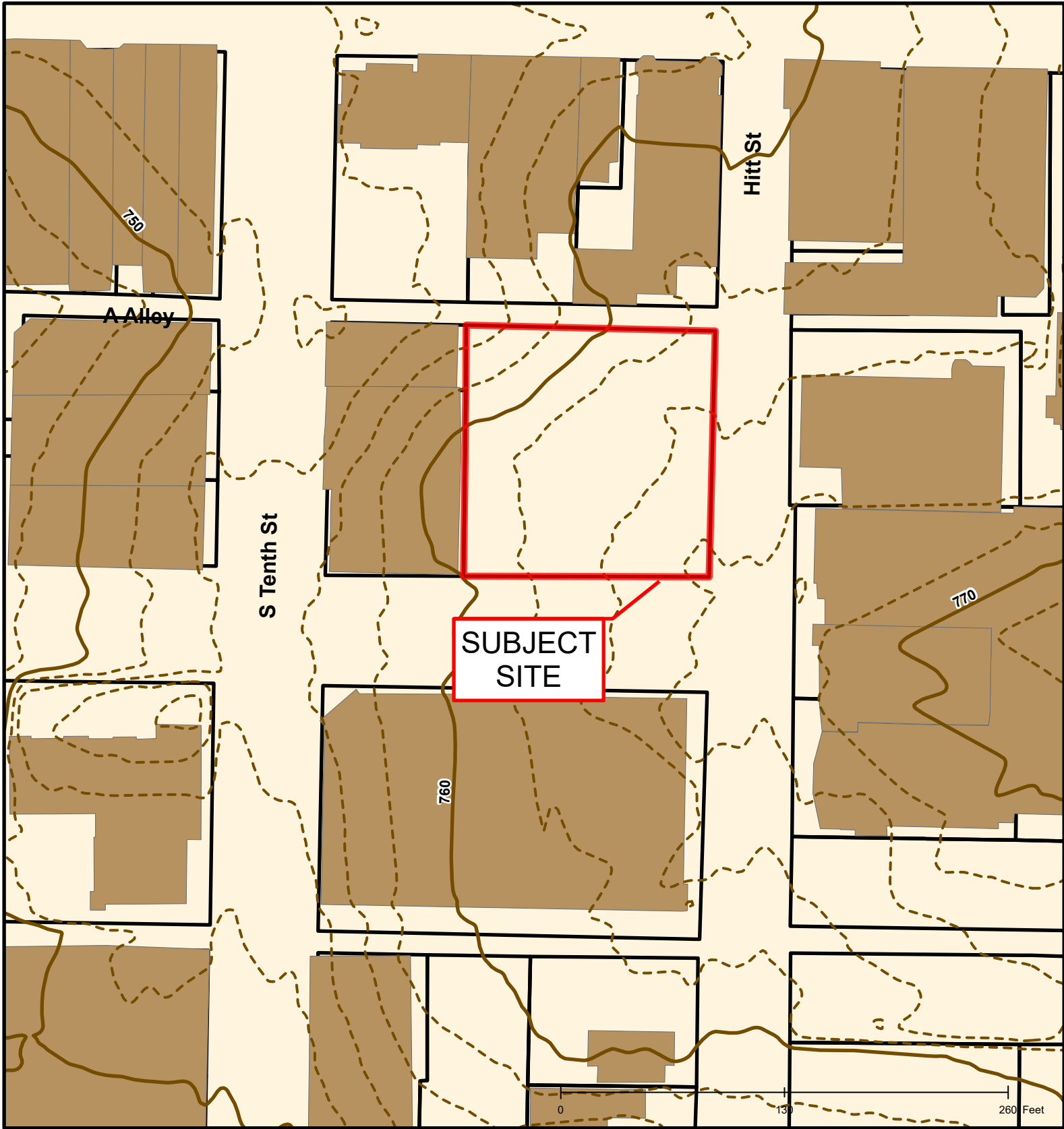




#157-2021: 1005 Cherry Street Final Plat & Design Adjustment





#157-2021: 1005 Cherry Street Final Plat & Design Adjustment

Building Footprint	Parcels	2015 Topo Lines
10 Foot Contour Lines	City Zoning	CODE
2 Foot Contour Lines		10 Foot Contour Lines

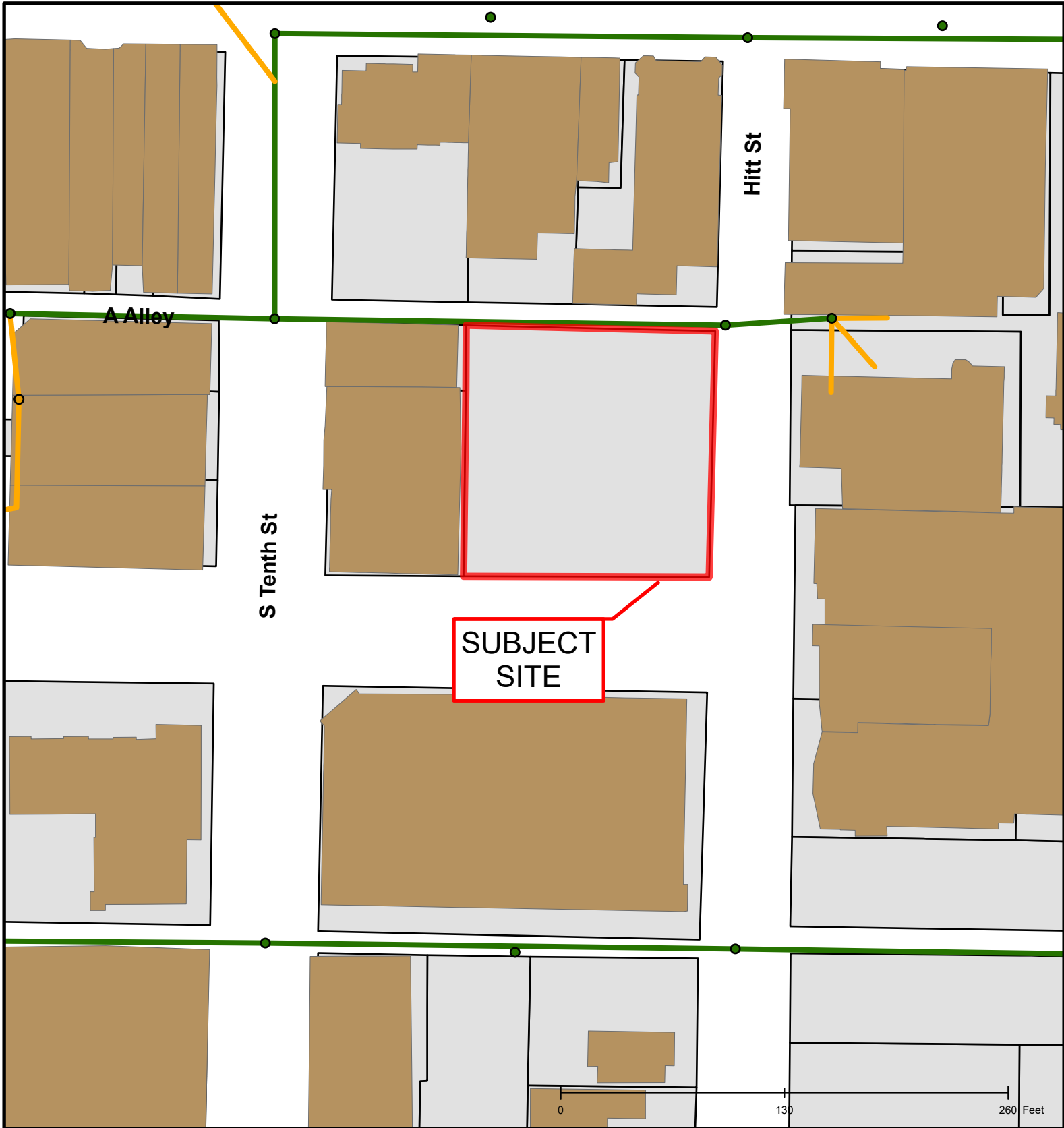


Created by The City of Columbia - Community Development Department

Parcel Data Source: Boone County Assessor

2017 Imagery: Boone County Assessor's Office

Hillshade Data: Boone County GIS



#157-2021: 1005 Cherry Street Final Plat & Design Adjustment

