

Exhibit B

REVISIONS:	
NO.	DATE
ORIGINAL	01/26/2023

THIS SHEET HAS BEEN SOMEWHAT SEALED AND DATED ELECTRONICALLY

EXHIBIT DRAWING NOT FOR CONSTRUCTION

JESSE RAY STEPHENS
MO LICENSE: 2010000868

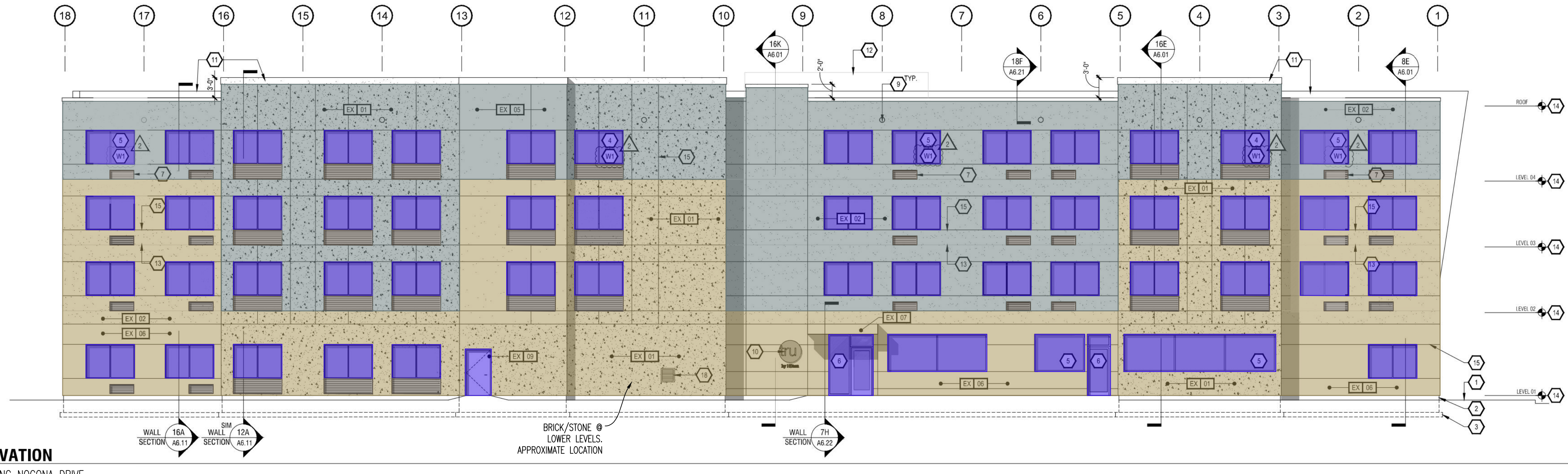
PREPARED BY:
CROCKETT ENGINEERS & ARCHITECTS
1000 K. Wilson Blvd.
Columbia, Missouri 65203
(314) 487-0292
www.crockettengineering.com
Crockett Engineering Consultants, LLC
Missouri Certificate of Authority #000000001

OWNER:
P106 LLC
4220 PAULES FARM ROAD
COLUMBIA, MO 65201

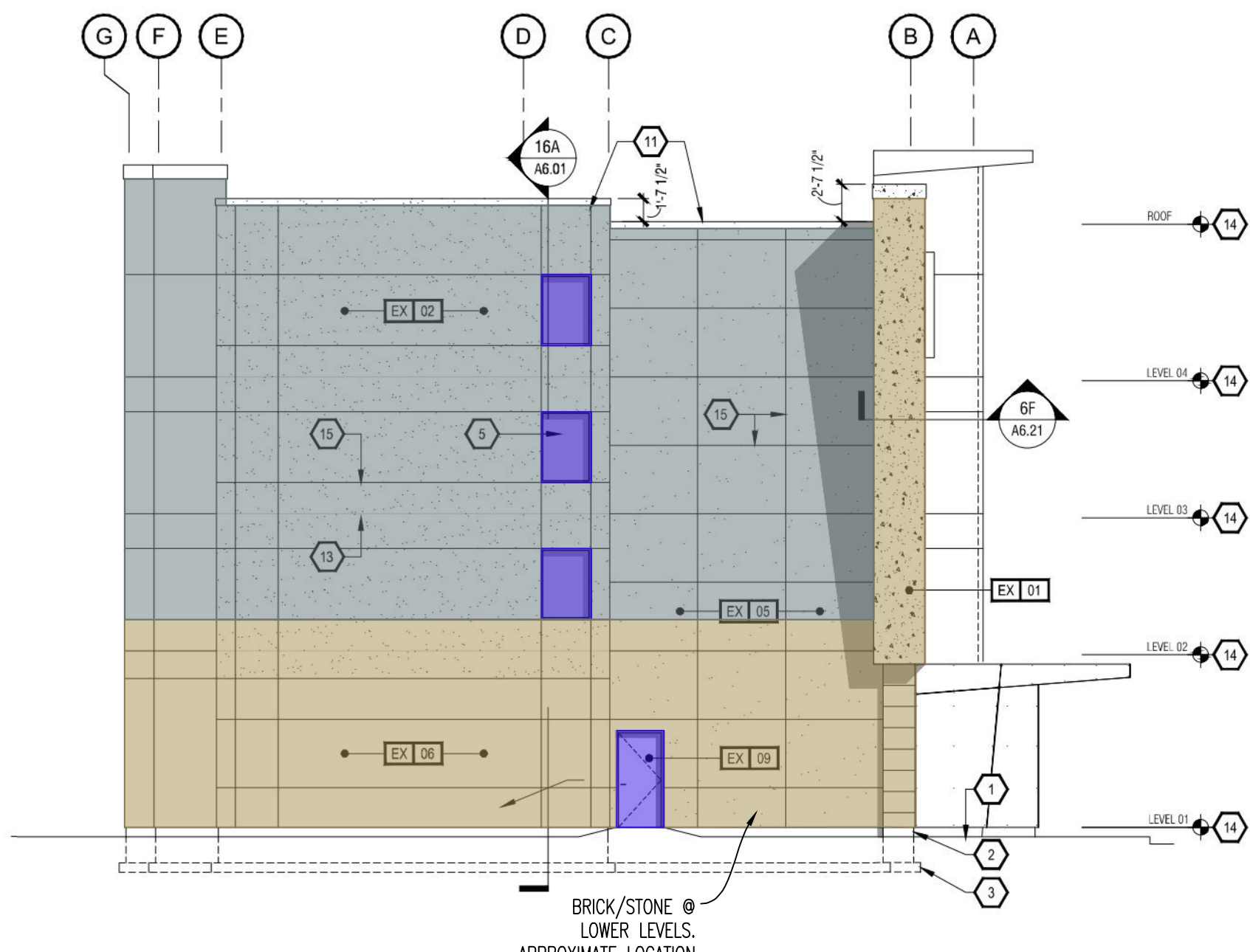
TRU HOTEL

DRAWING INCLUDES:
PRELIMINARY BUILDING ELEVATIONS

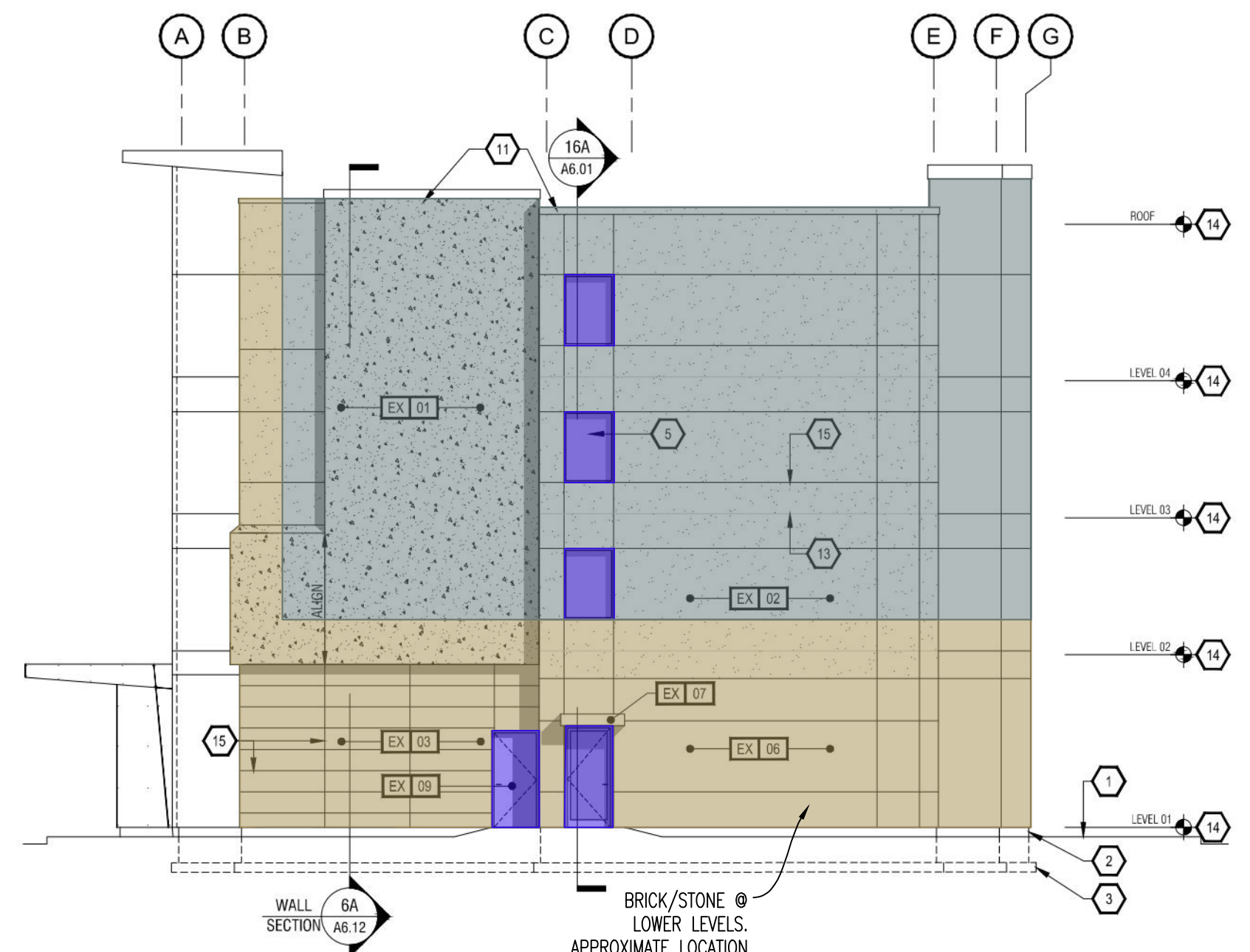
DESIGNED: JRS
DRAWN: JRS
PROJECT NO: 210249
SHEET: 1/1



EXTERIOR ELEVATION
1" = 10' WEST FACING NOCONA DRIVE



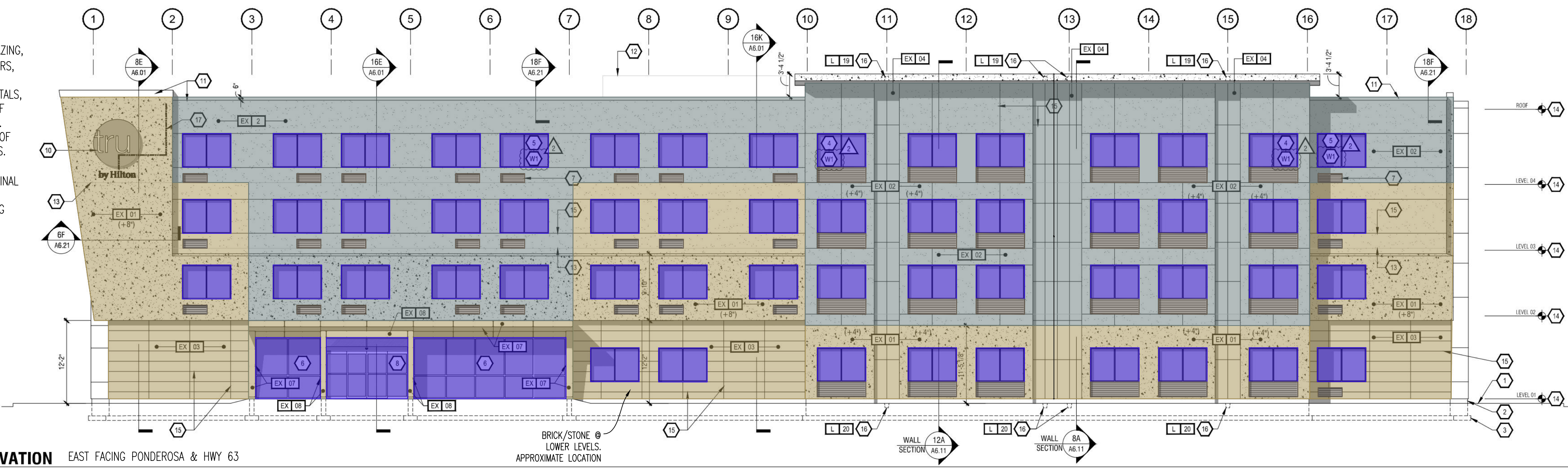
EXTERIOR ELEVATION FACING SOUTH
1" = 10'



EXTERIOR ELEVATION FACING NORTH
1" = 10'



ELEVATION CONCEPT SIMILAR TO TRU HOTEL LOCATED IN ST. CHARLES, MISSOURI.



EXTERIOR ELEVATION EAST FACING PONDEROSA & HWY 63
1" = 10'

55% MINIMUM OF FACADE TO BE GLAZING, STONE/BRICK, DOORS, LOUVERS, ARCHITECTURAL METALS, WITH A MINIMUM OF 20% FENESTRATION. MAXIMUM OF 45% OF FACADE TO BE EIFS. (NOTE: DIMENSIONS SHOWN ARE NOT FINAL AND WILL BE DETERMINED DURING BUILDING DESIGN.)