

Source: Nearmap. <https://www.nearmap.com/us/en>

# Case # 221-2023 - 6221 E. Broadway

## Conditional Use Permit



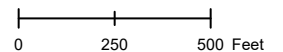
- Columbia City Limit
- City Property
- City Zoning
- Parcels

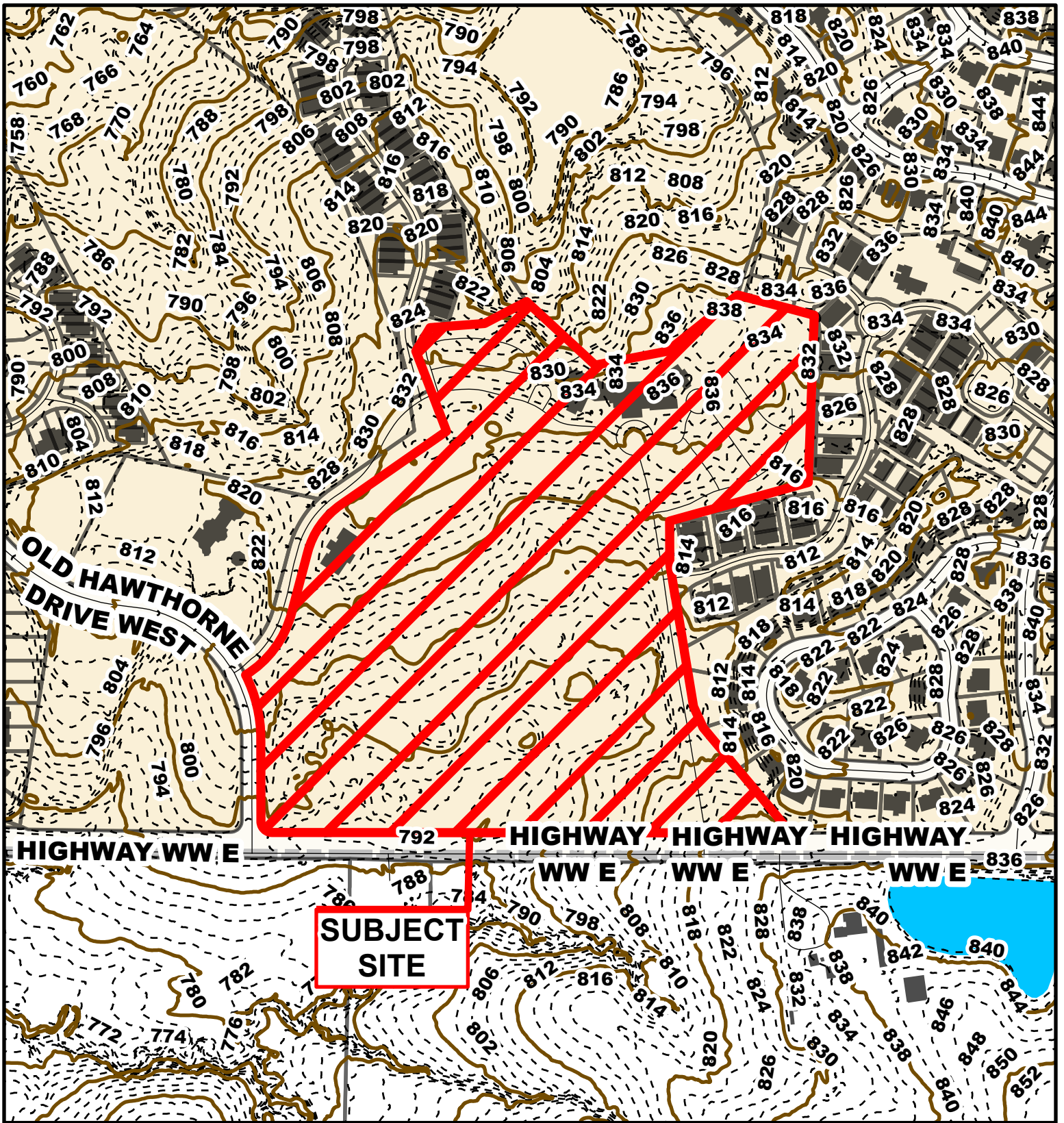


Parcel Data Source: Boone County Assessor

Created by The City of Columbia - Community Development Department

2022 Imagery: NearMap





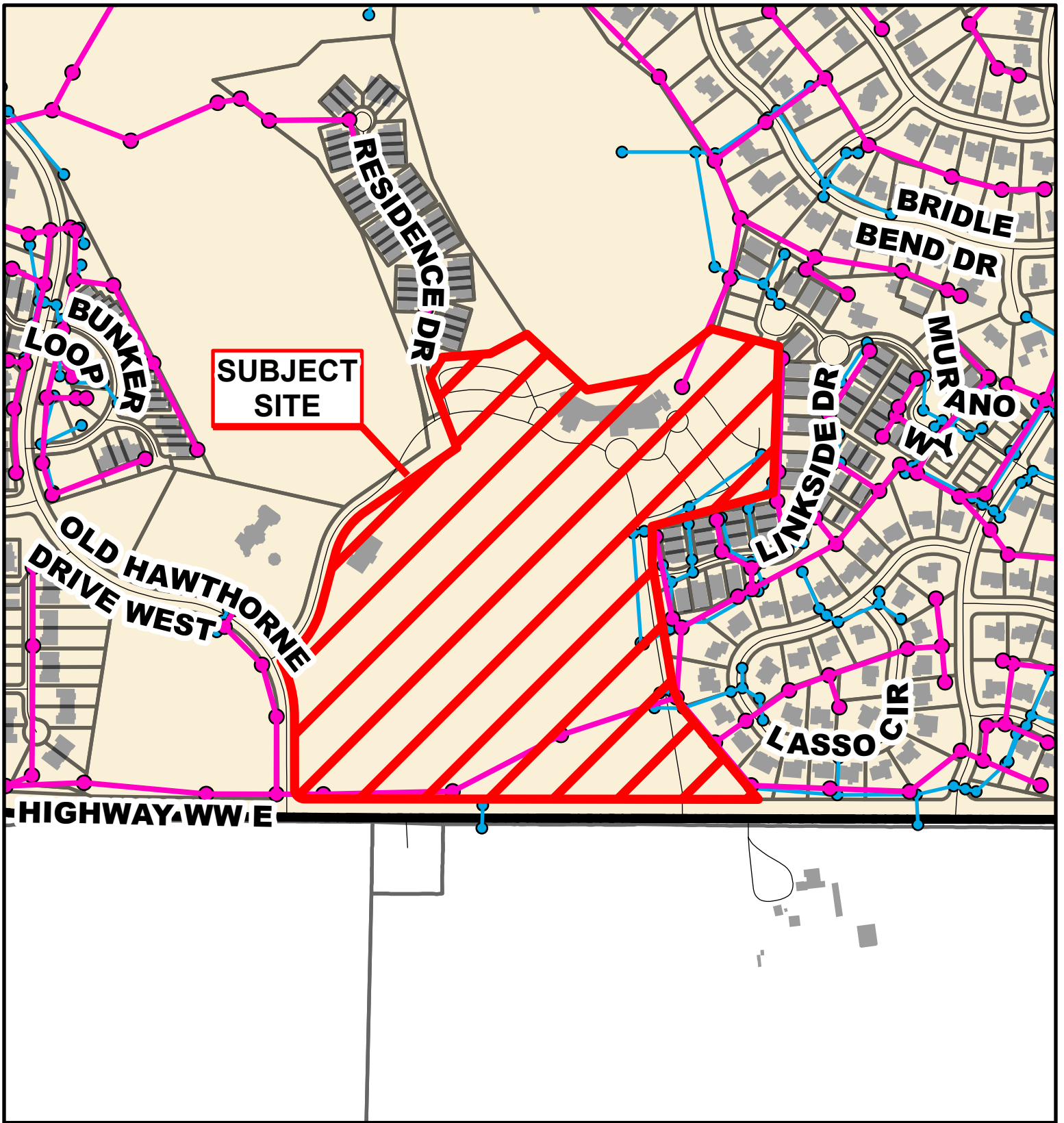
# Case # 221-2023 - 6221 E. Broadway

## Conditional Use Permit



- 10 Foot Contour Lines
- 2 Foot Contour Lines
- City of Columbia
- Parcels





# Case # 221-2023 - 6221 E. Broadway

## Conditional Use Permit



- City Sanitary Line
- City Storm Lines
- Parcels
- Columbia City Limits

