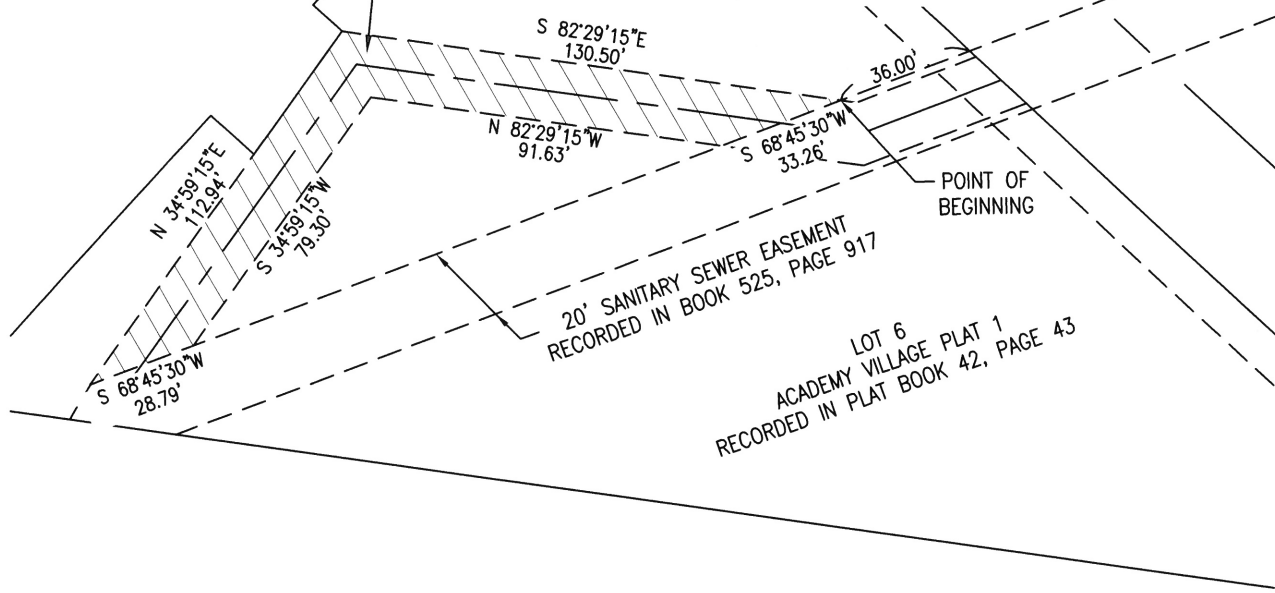




LOT 5
ACADEMY VILLAGE PLAT 1
RECORDED IN PLAT BOOK 42, PAGE 43

16' SANITARY SEWER ESMT. SHOWN AND
DEDICATED BY ACADEMY VILLAGE PLAT 1 REC.
IN PLAT BOOK 42, PAGE 43, TO BE VACATED

GREEN MEADOWS ROAD
(33' 1/2 WIDTH R/W)



20' SANITARY SEWER EASEMENT
RECORDED IN BOOK 525, PAGE 917

LOT 6
ACADEMY VILLAGE PLAT 1
RECORDED IN PLAT BOOK 42, PAGE 43

LOT 1
CHRISTIAN CHAPEL SUBDIVISION
RECORDED IN PLAT BOOK 11, PAGE 232

DISPLAY FOR PART OF SANITARY
SEWER EASEMENT TO BE VACATED
ACADEMY VILLAGE PLAT 1

