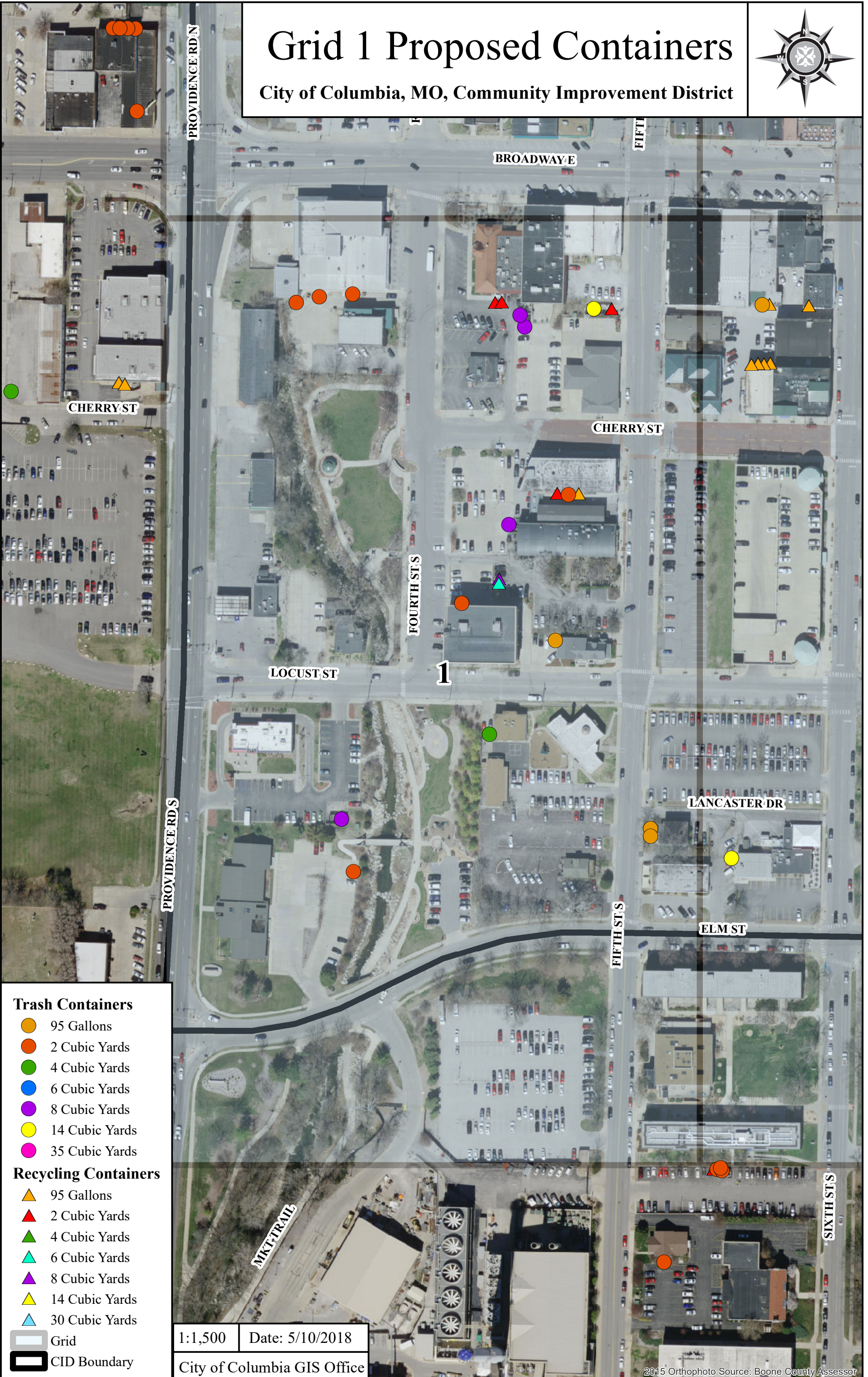


Grid 1 Proposed Containers

City of Columbia, MO, Community Improvement District



Trash Containers

- 95 Gallons
- 2 Cubic Yards
- 4 Cubic Yards
- 6 Cubic Yards
- 8 Cubic Yards
- 14 Cubic Yards
- 35 Cubic Yards

Recycling Containers

- ▲ 95 Gallons
- ▲ 2 Cubic Yards
- ▲ 4 Cubic Yards
- ▲ 6 Cubic Yards
- ▲ 8 Cubic Yards
- ▲ 14 Cubic Yards
- ▲ 30 Cubic Yards

- Grid
- CID Boundary

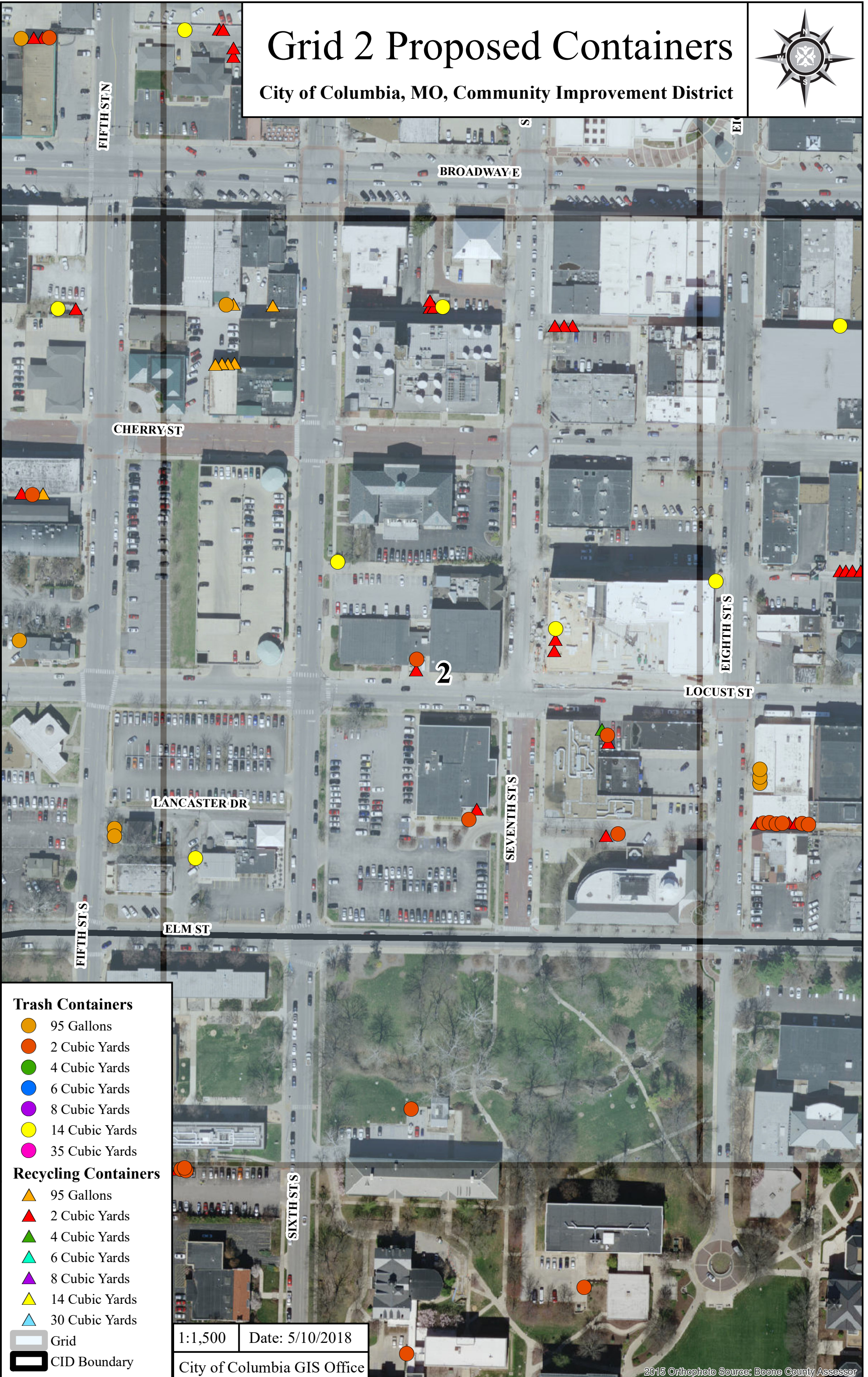
1:1,500

Date: 5/10/2018

City of Columbia GIS Office

Grid 2 Proposed Containers

City of Columbia, MO, Community Improvement District



Trash Containers

- 95 Gallons
- 2 Cubic Yards
- 4 Cubic Yards
- 6 Cubic Yards
- 8 Cubic Yards
- 14 Cubic Yards
- 35 Cubic Yards

Recycling Containers

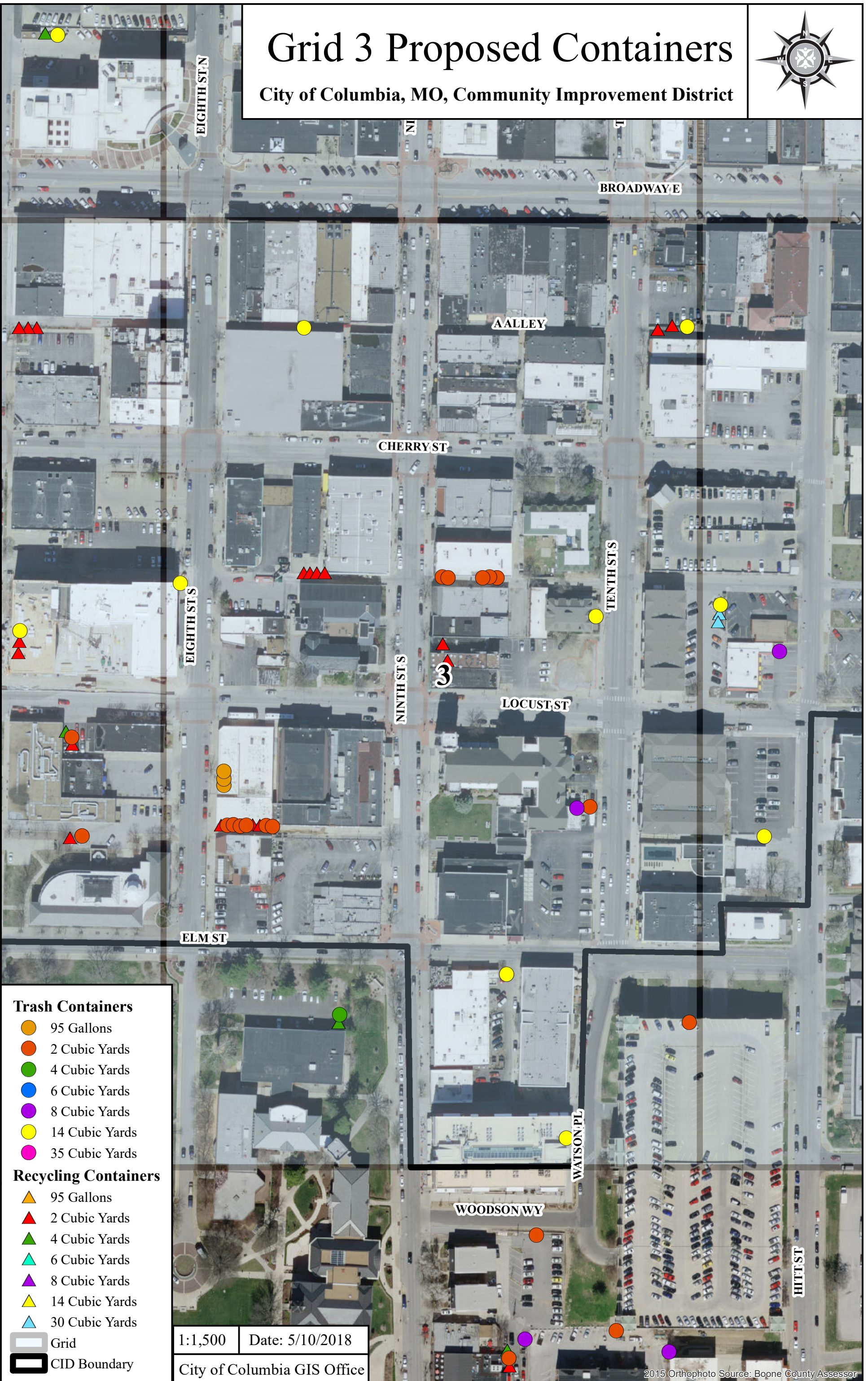
- ▲ 95 Gallons
- ▲ 2 Cubic Yards
- ▲ 4 Cubic Yards
- ▲ 6 Cubic Yards
- ▲ 8 Cubic Yards
- ▲ 14 Cubic Yards
- ▲ 30 Cubic Yards

- Grid
- CID Boundary

1:1,500 Date: 5/10/2018
 City of Columbia GIS Office

Grid 3 Proposed Containers

City of Columbia, MO, Community Improvement District



Trash Containers

- 95 Gallons
- 2 Cubic Yards
- 4 Cubic Yards
- 6 Cubic Yards
- 8 Cubic Yards
- 14 Cubic Yards
- 35 Cubic Yards

Recycling Containers

- 95 Gallons
- 2 Cubic Yards
- 4 Cubic Yards
- 6 Cubic Yards
- 8 Cubic Yards
- 14 Cubic Yards
- 30 Cubic Yards

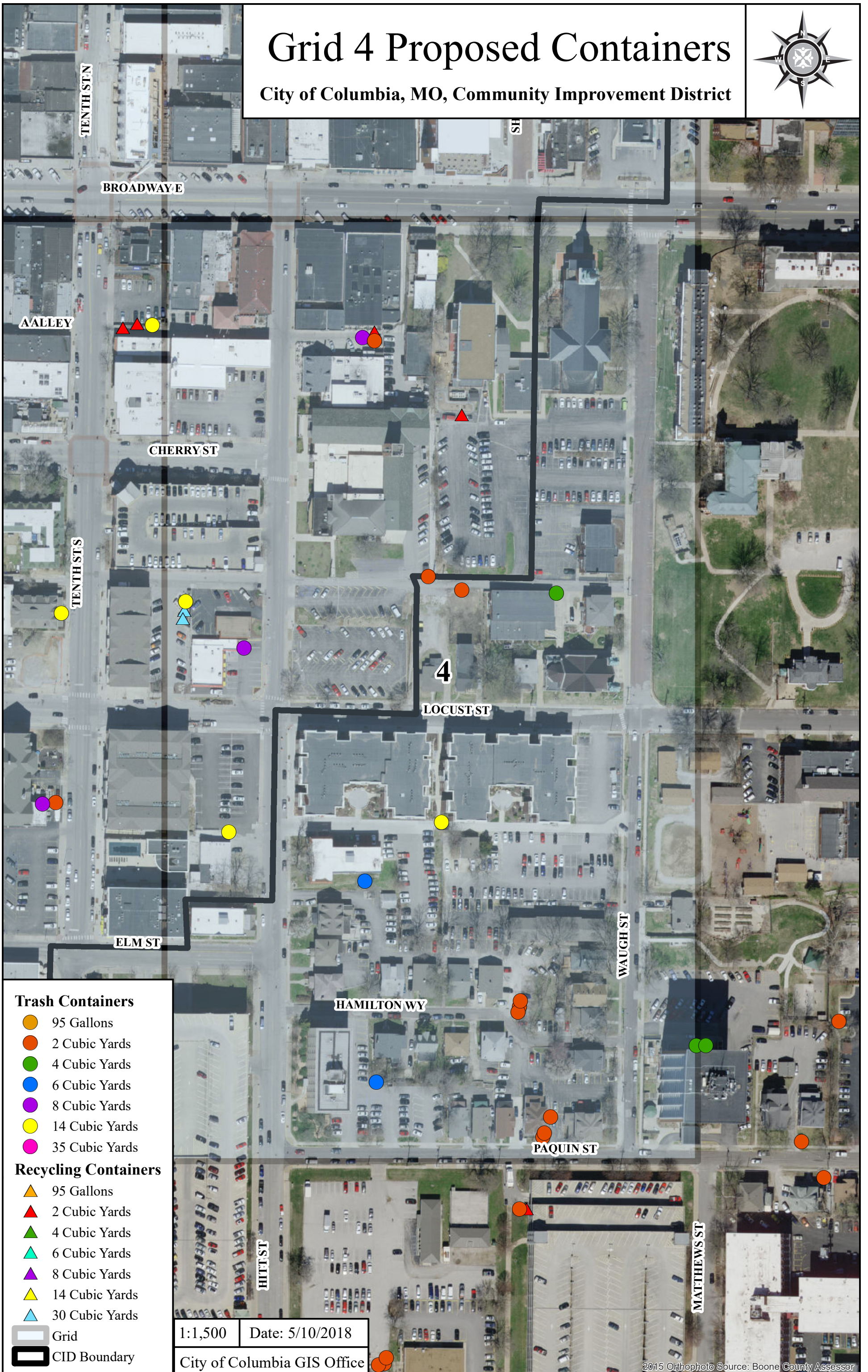
- Grid
- CID Boundary

1:1,500 | Date: 5/10/2018

City of Columbia GIS Office

Grid 4 Proposed Containers

City of Columbia, MO, Community Improvement District



Trash Containers

- 95 Gallons
- 2 Cubic Yards
- 4 Cubic Yards
- 6 Cubic Yards
- 8 Cubic Yards
- 14 Cubic Yards
- 35 Cubic Yards

Recycling Containers

- 95 Gallons
- 2 Cubic Yards
- 4 Cubic Yards
- 6 Cubic Yards
- 8 Cubic Yards
- 14 Cubic Yards
- 30 Cubic Yards

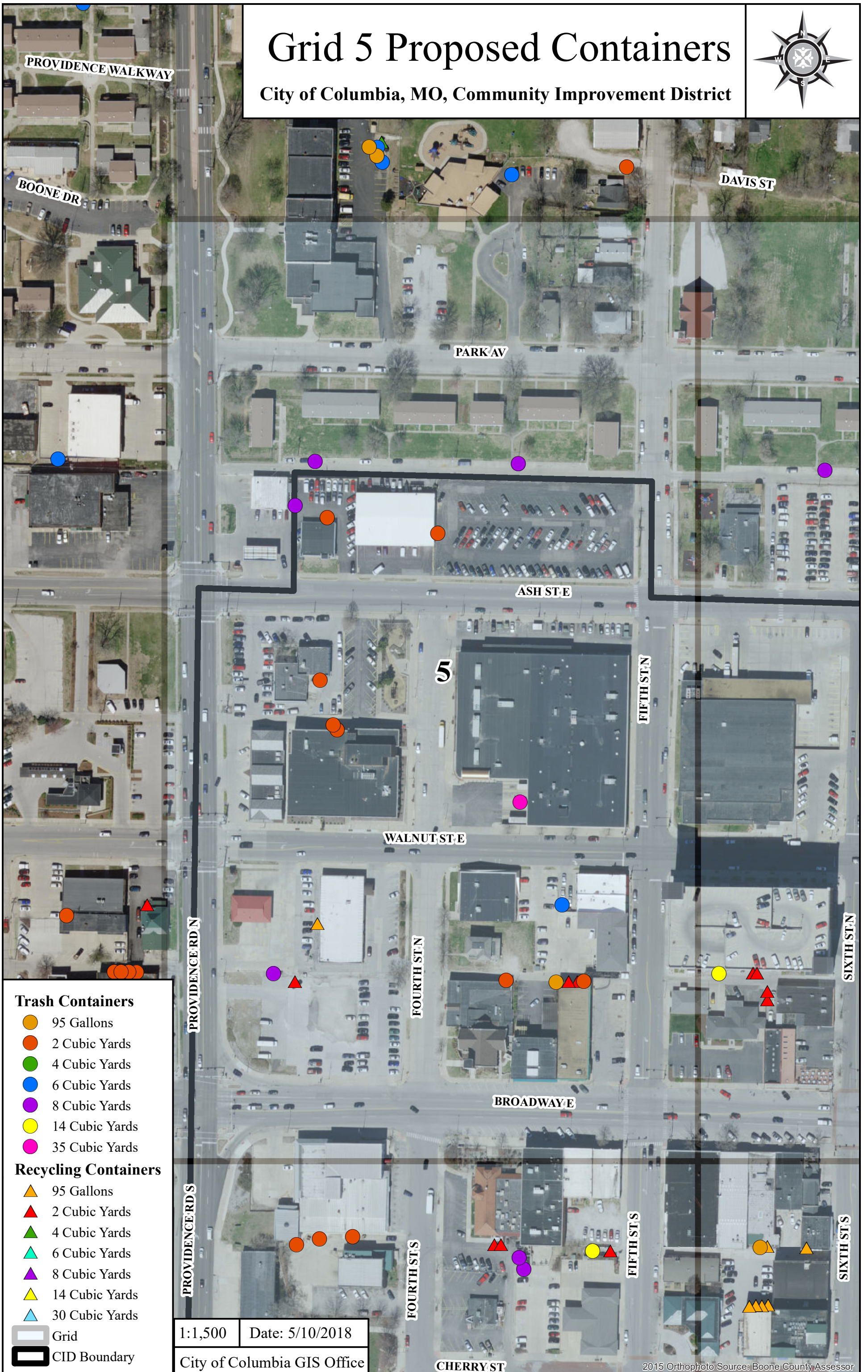
- Grid
- CID Boundary

1:1,500 Date: 5/10/2018

City of Columbia GIS Office

Grid 5 Proposed Containers

City of Columbia, MO, Community Improvement District



Trash Containers

- 95 Gallons
- 2 Cubic Yards
- 4 Cubic Yards
- 6 Cubic Yards
- 8 Cubic Yards
- 14 Cubic Yards
- 35 Cubic Yards

Recycling Containers

- ▲ 95 Gallons
- ▲ 2 Cubic Yards
- ▲ 4 Cubic Yards
- ▲ 6 Cubic Yards
- ▲ 8 Cubic Yards
- ▲ 14 Cubic Yards
- ▲ 30 Cubic Yards

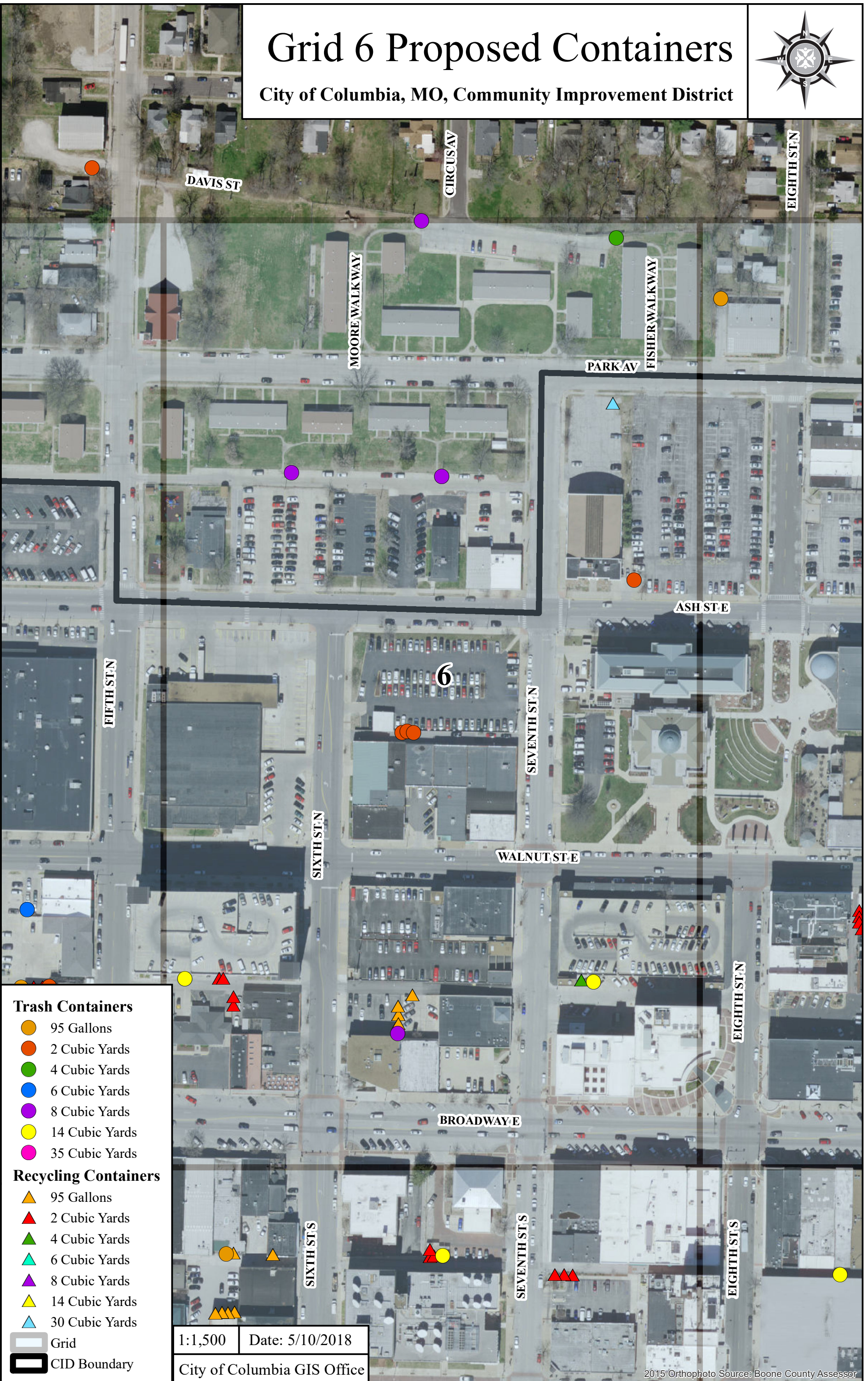
- Grid
- CID Boundary

1:1,500 Date: 5/10/2018

City of Columbia GIS Office

Grid 6 Proposed Containers

City of Columbia, MO, Community Improvement District



- Trash Containers**
- 95 Gallons
 - 2 Cubic Yards
 - 4 Cubic Yards
 - 6 Cubic Yards
 - 8 Cubic Yards
 - 14 Cubic Yards
 - 35 Cubic Yards

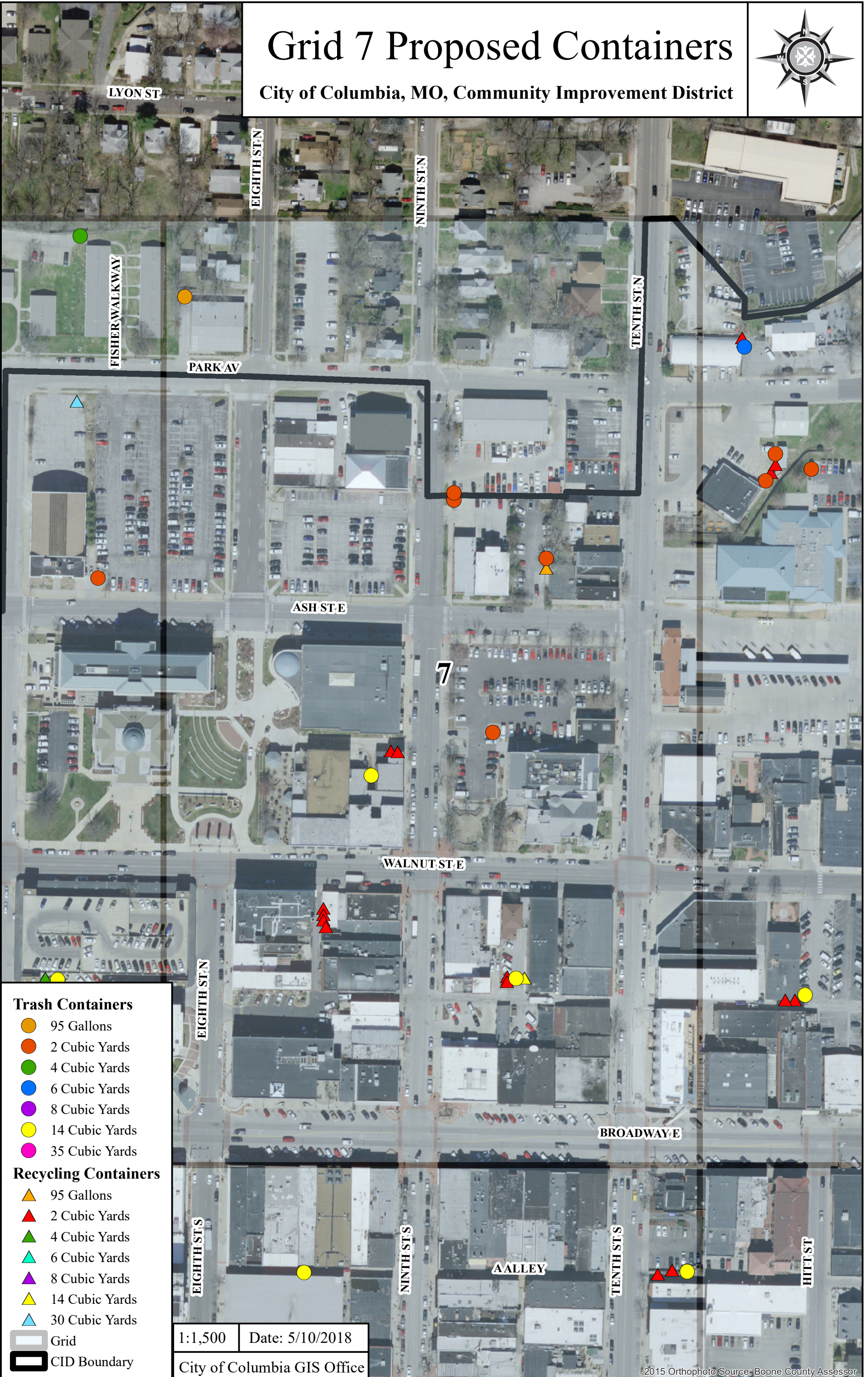
- Recycling Containers**
- ▲ 95 Gallons
 - ▲ 2 Cubic Yards
 - ▲ 4 Cubic Yards
 - ▲ 6 Cubic Yards
 - ▲ 8 Cubic Yards
 - ▲ 14 Cubic Yards
 - ▲ 30 Cubic Yards

Grid
 CID Boundary

1:1,500 Date: 5/10/2018
 City of Columbia GIS Office

Grid 7 Proposed Containers

City of Columbia, MO, Community Improvement District



Trash Containers

- 95 Gallons
- 2 Cubic Yards
- 4 Cubic Yards
- 6 Cubic Yards
- 8 Cubic Yards
- 14 Cubic Yards
- 35 Cubic Yards

Recycling Containers

- ▲ 95 Gallons
- ▲ 2 Cubic Yards
- ▲ 4 Cubic Yards
- ▲ 6 Cubic Yards
- ▲ 8 Cubic Yards
- ▲ 14 Cubic Yards
- ▲ 30 Cubic Yards

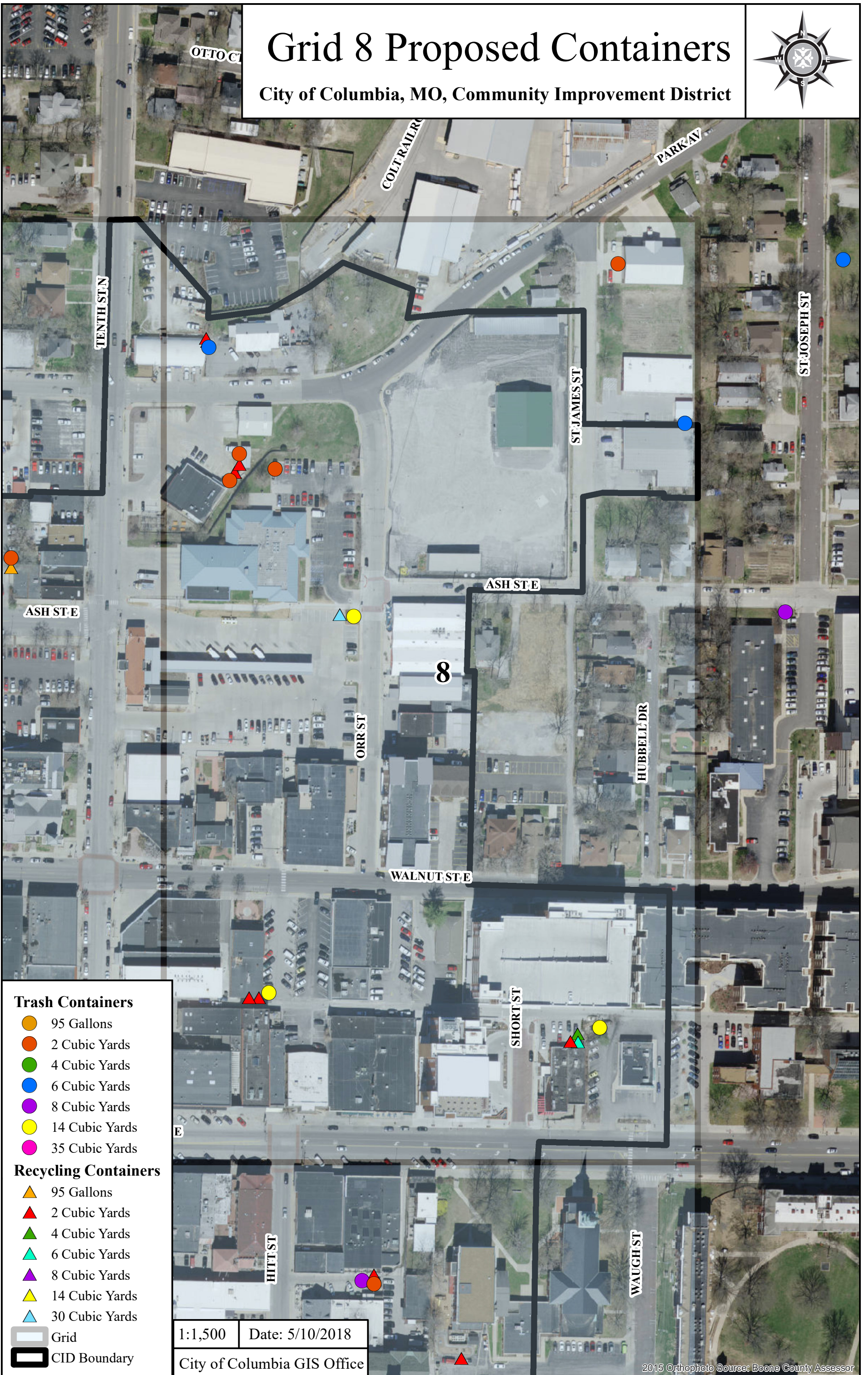
- Grid
- CID Boundary

1:1,500 Date: 5/10/2018

City of Columbia GIS Office

Grid 8 Proposed Containers

City of Columbia, MO, Community Improvement District



Trash Containers

- 95 Gallons
- 2 Cubic Yards
- 4 Cubic Yards
- 6 Cubic Yards
- 8 Cubic Yards
- 14 Cubic Yards
- 35 Cubic Yards

Recycling Containers

- ▲ 95 Gallons
- ▲ 2 Cubic Yards
- ▲ 4 Cubic Yards
- ▲ 6 Cubic Yards
- ▲ 8 Cubic Yards
- ▲ 14 Cubic Yards
- ▲ 30 Cubic Yards

- Grid
- CID Boundary

1:1,500 | Date: 5/10/2018

City of Columbia GIS Office