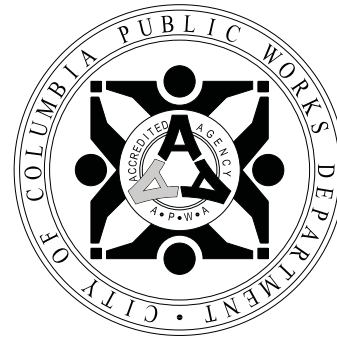


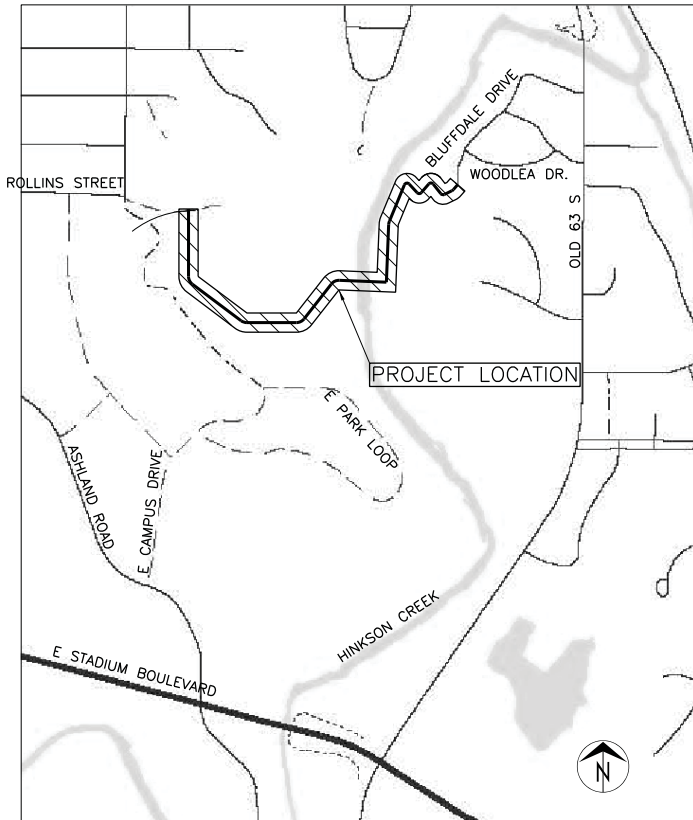
City of Columbia, Missouri

Department of Public Works



SHEPARD TO ROLLINS TRAIL CONNECTION

CPP - 9999 (523)
R 164-14



LOCATION MAP

STA. 10+29.77 TO STA. 41+97.61

SHARED USE PATH
DESIGN SPEED = 20 MPH

HORIZONTAL CURVE IS LESS THAN AASHTO BICYCLE DESIGN GUIDE FOR A 20 MPH CURVE. THE CURVE DOES MEET A 16 MPH DESIGN CRITERIA. STATION 10+45.79, STATION 10+94.94 AND STATION 37+28.02.

HORIZONTAL CURVE IS LESS THAN AASHTO BICYCLE DESIGN GUIDE FOR A 20 MPH CURVE. THE CURVE DOES MEET A 12 MPH DESIGN CRITERIA. STATION 38+25.00 AND STATION 41+48.97.

HORIZONTAL CURVE IS LESS THAN AASHTO BICYCLE DESIGN GUIDE FOR A 20 MPH CURVE. THE CURVE DOES MEET A 10 MPH DESIGN CRITERIA. STATION 27+88.08, STATION 39+43.75 AND STATION 40+43.45.

GENERAL NOTES

- All construction to be in accordance with "City of Columbia Street, Storm and Sanitary Specifications" (Current edition).
- Known underground utilities are shown in their approximate locations. Other utilities may exist.
- All removal of driveway pavements should be verified by field engineer.
- All excavation to be in accordance with Sections 319.010-319.050, Revised Statutes of the State of Missouri. Such compliance shall not, however, excuse any person making any excavation from doing so in a careful and prudent manner, nor shall it excuse such person from liability for any damage or injury to underground utilities resulting from the excavation.
- All RCP is Class III unless otherwise indicated.
- All disturbed earth areas shall be restored as per TS-___ Seeding and TS-___ Erosion Control.
- Remove all pavement surfaces, inlets, pipes and sidewalks within the construction limits as per TS-___, except those noted to remain. The field inspector shall verify removal of all driveway pavement.
- Removal of trees and bushes shall be verified by field inspectors. Exercise caution when working near the construction limits to minimize disturbance to adjacent trees and shrubs that are not being removed by construction activities.
- Backfill of reinforced concrete pipe shall be 1 inch clean rock or soil compacted to 90 percent of standard proctor density as per TS-___.
- No open trenches will be allowed overnight outside of the "road closed" area. Asphaltic "cold mix" shall be used as a temporary patch overnight. Temporary patching shall be considered incidental to the work.

UTILITY COMPANIES:

- | | |
|---|--|
| <p>TELEPHONE
CenturyLink
625 Cherry Street
Columbia, MO 65205
573-886-3505</p> <p>NATURAL GAS
Ameren Missouri
2001 Maguire Boulevard
Columbia, MO 65201
573-239-6165 (N of I-70)
573-876-3030 (S of I-70)</p> <p>CABLE TELEVISION
Mediacom
901 N. College Avenue
Columbia, MO 65201
573-443-1536 ext 354</p> <p>LOCATES
Missouri One Call Inc.
1022 B Northeast Drive
Jefferson City, MO 65109
1-800-344-7483</p> | <p>WATER
City of Columbia
P.O. Box 6015
Water & Light Department
Columbia, MO 65205
573-874-7301</p> <p>ELECTRIC
City of Columbia
P.O. Box 6015
Water & Light Department
Columbia, MO 65205
573-874-7301</p> <p>SANITARY SEWER
City of Columbia
P.O. Box 6015
Public Works Department
Columbia, MO 65205
573-874-7250</p> <p>ELECTRIC (county)
Boone Electric Cooperative
1413 Range Line Street
Columbia, MO 65201
573-449-4181 ext 231</p> |
|---|--|

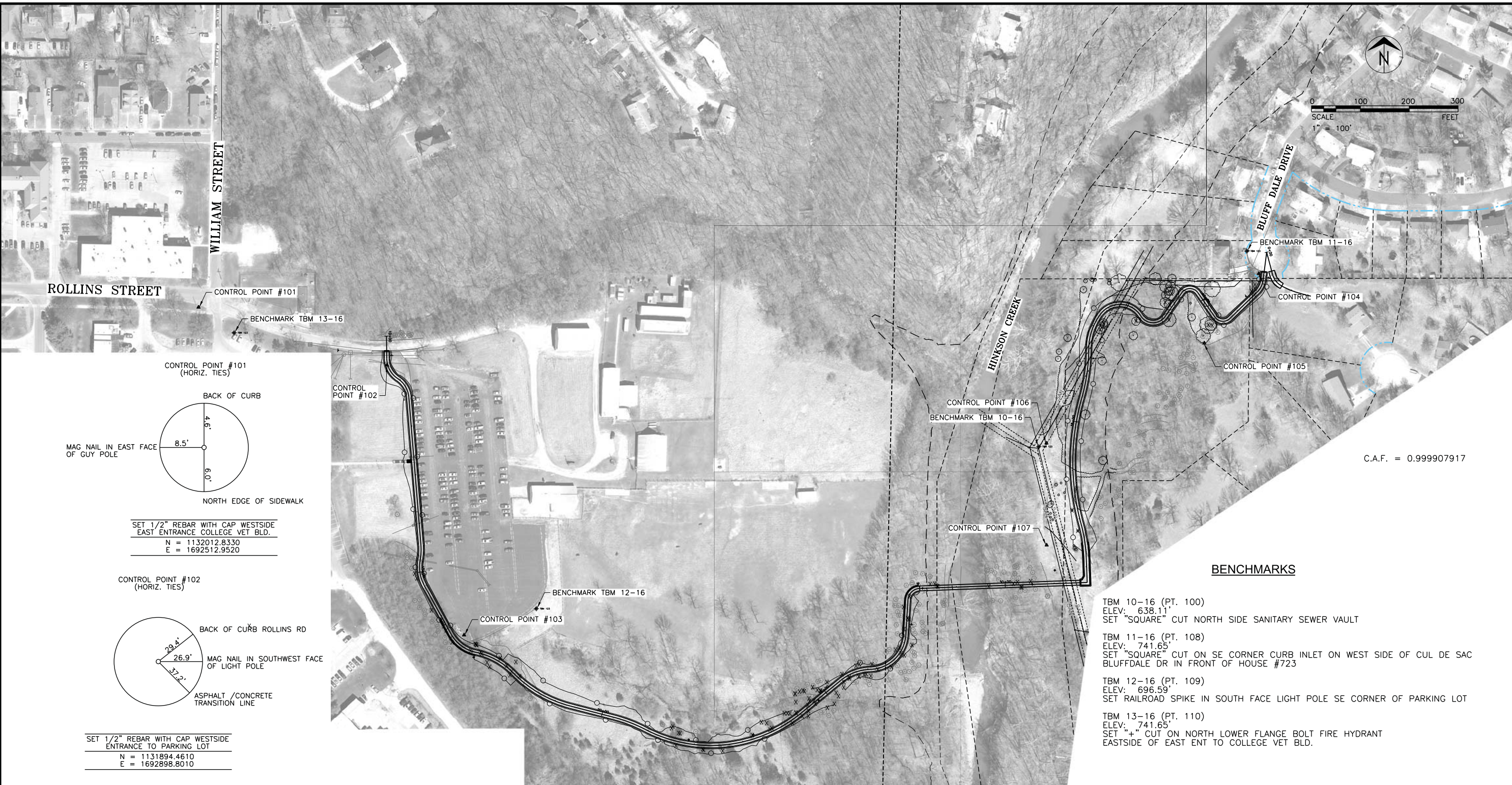
INDEX OF SHEETS	
Description	Sheet No.
Cover Sheet	1
Coordinate Reference Points	2
Typical Sections, Alignment Tabulation, and General Notes	3
Plan and Profile	4 - 7
Storm Drainage Profiles	8
Bridge Plan	9
Traffic Control Details	10
Cross Sections	11 - 18

LEGEND OF SYMBOLS

POWER POLE	○
TELEPHONE POLE	●
GUY ANCHOR	↑
GUY POLE	⊕
STREET LIGHT POLE	⊗
YARD LIGHT (SOLAR)	⊗
WATER METER	⊞
GAS METER	⊞
GAS VALVE	⊞
WATER VALVE	⊞
FIRE HYDRANT	○ F.H.
PIPE BREAKLINE	~
SANITARY MANHOLE	○ M.H.
SANITARY CLEANOUT	○ C.O.
SANITARY LATERAL CLEANOUT	○ C.O.
TRAVERSE POINT	△ T.P.
MoDOT ROW MARKER	⊕
BENCHMARK	⊕
SIGN	⊕
MAIL BOX	⊕
PROPERTY IRON	○ ^P or ○ ^R or ○ ^{RO}
BUSH	⊗
STUMP	⊗
TREE REMOVAL	⊗
TREE	⊗ DECIDUOUS ⊗ CONIFER
TREE LINE	~
SILT FENCE/TREE PROTECT	~
EXISTING PUBLIC SANITARY SEWER	— SAN — SAN —
EXISTING SANITARY SEWER LATERAL	— LAT — LAT —
EXISTING SANITARY SEWER TO BE ABANDONED	--- SAN --- SAN ---
PROPOSED SEWER MAIN AND LATERALS	— X — X —
FENCE	— X — X —
CABLE TELEVISION	— C — or — UTV —
TELEPHONE	— T — or — UT —
ELECTRIC	— E — or — UGE —
TELEPHONE OR ELECTRIC MANHOLE	⊞ T or ⊞ E
WATER MAIN	— W —
GAS MAIN	— G —
FIBER OPTIC	— FO — FO —
FLOW LINE	—
PROPERTY LINE	—
LOT LINE	—
EXISTING RIGHT OF WAY LINE	— EXIST. ROW —
EXISTING EASEMENT	—
PERMANENT UTILITY EASEMENT	— PUE —
PROPOSED SANITARY SEWER EASEMENT	— PSSE —
PROPOSED PERMANENT DRAINAGE EASEMENT	— PDE —
PROPOSED RIGHT OF WAY	— PSE —
TEMPORARY ACCESS EASEMENT	— TAE —
TEMPORARY CONSTRUCTION EASEMENT	— TCE —
GRADING LIMIT	—

City of Columbia, Missouri Department of Public Works			
No.	Date	By	Revision
File No. 32-XX-XX	Des. K.M.B.	Sheet	David Allen Nichols Registered Professional Engineer E-24212
Scale: None	Dwn. K.M.B.	1 of 18	
Date: 9/6/2016	Chk. J.W.Z.		
SHEPARD TO ROLLINS TRAIL CONNECTION			
Approved By _____			
Director of Public Works			Date _____

C:\Users\jacob\OneDrive\Documents\Drawings\City of Columbia\Drawings\Shepard to Rollins Trail Connection.dwg



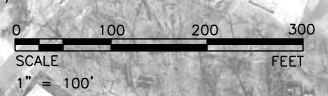
No.	Date	By	Revision

**SHEPARD TO ROLLINS
TRAIL CONNECTION**
Coordinate Reference Points

City of Columbia, Missouri
Department of Public Works

JOHN ZIMMERMANN
Registered Professional Engineer
[ENGINEER NUMBER]

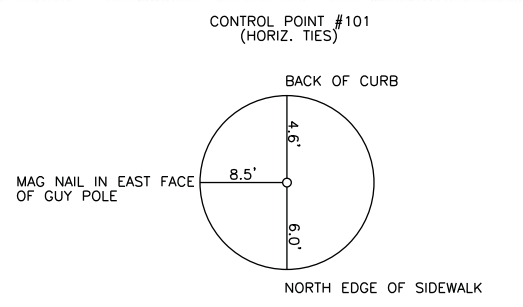
Proj. No. CPP-9999 (523)
File No. P101160118
Scale: 1" = 100'
Date: 4/17/2017
Des. K.M.B.
Dwn. K.M.B.
Chk. J.W.Z.



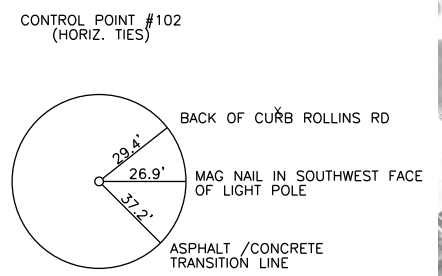
C.A.F. = 0.999907917

BENCHMARKS

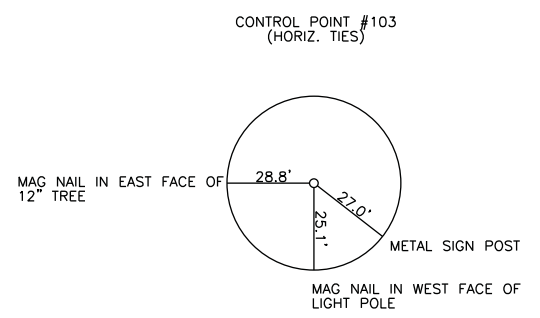
- TBM 10-16 (PT. 100)
ELEV.: 638.11'
SET "SQUARE" CUT NORTH SIDE SANITARY SEWER VAULT
- TBM 11-16 (PT. 108)
ELEV.: 741.65'
SET "SQUARE" CUT ON SE CORNER CURB INLET ON WEST SIDE OF CUL DE SAC BLUFFDALE DR IN FRONT OF HOUSE #723
- TBM 12-16 (PT. 109)
ELEV.: 696.59'
SET RAILROAD SPIKE IN SOUTH FACE LIGHT POLE SE CORNER OF PARKING LOT
- TBM 13-16 (PT. 110)
ELEV.: 741.65'
SET "+" CUT ON NORTH LOWER FLANGE BOLT FIRE HYDRANT EASTSIDE OF EAST ENT TO COLLEGE VET BLD.



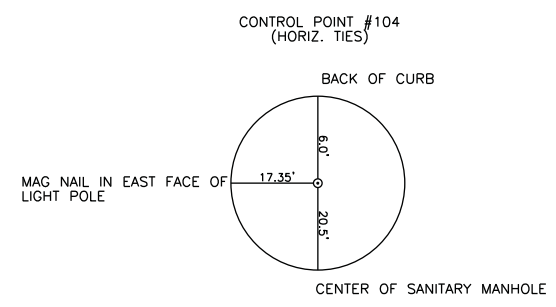
SET 1/2" REBAR WITH CAP WESTSIDE EAST ENTRANCE COLLEGE VET BLD.
N = 1132012.8330
E = 1692512.9520



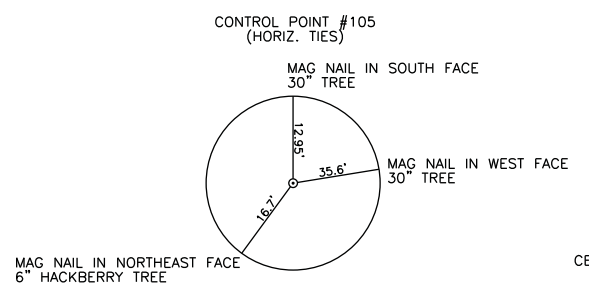
SET 1/2" REBAR WITH CAP WESTSIDE ENTRANCE TO PARKING LOT
N = 1131894.4610
E = 1692898.8010



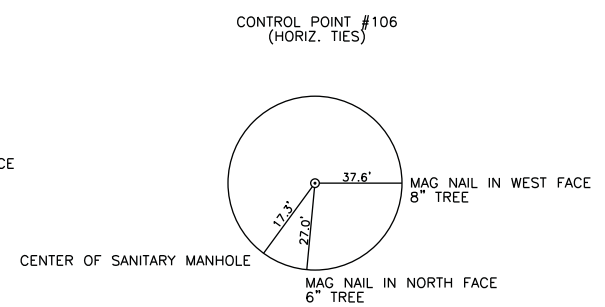
SET 1/2" REBAR WITH CAP SW CORNER PARKING LOT.
N = 1131341.6490
E = 1693056.3660



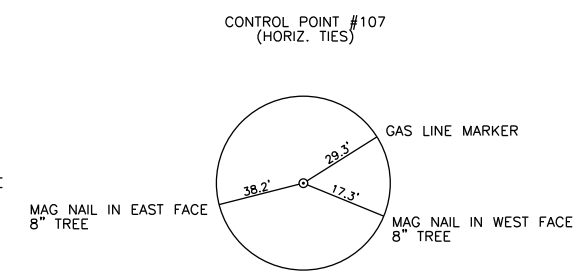
SET 1/2" REBAR WITH CAP AT THE END OF CUL DE SAC BLUFFDALE DR
N = 1132081.8610
E = 1694683.4090



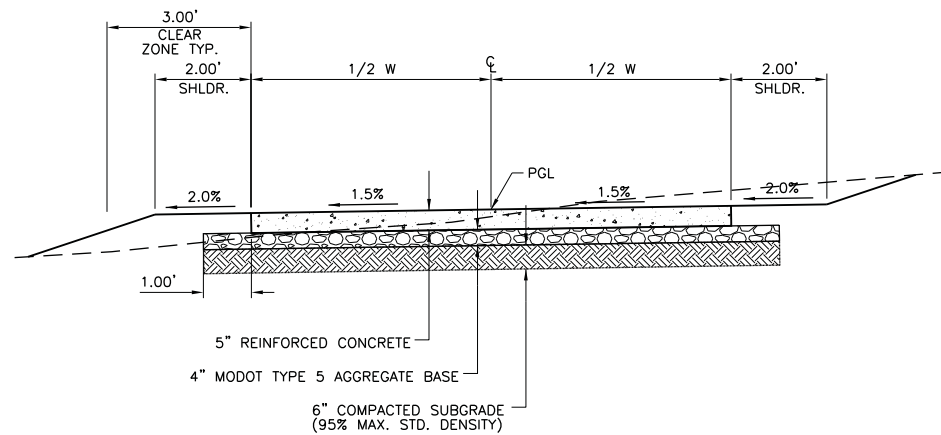
SET 1/2" REBAR WITH CAP SOUTHWEST CORNER OPEN LOT AT THE END OF CUL DE SAC
N = 1131939.5180
E = 1694571.6470



SET 1/2" REBAR WITH CAP WESTSIDE ACCESS RD EAST SIDE OF CREEK
N = 1131734.6360
E = 1694248.6030

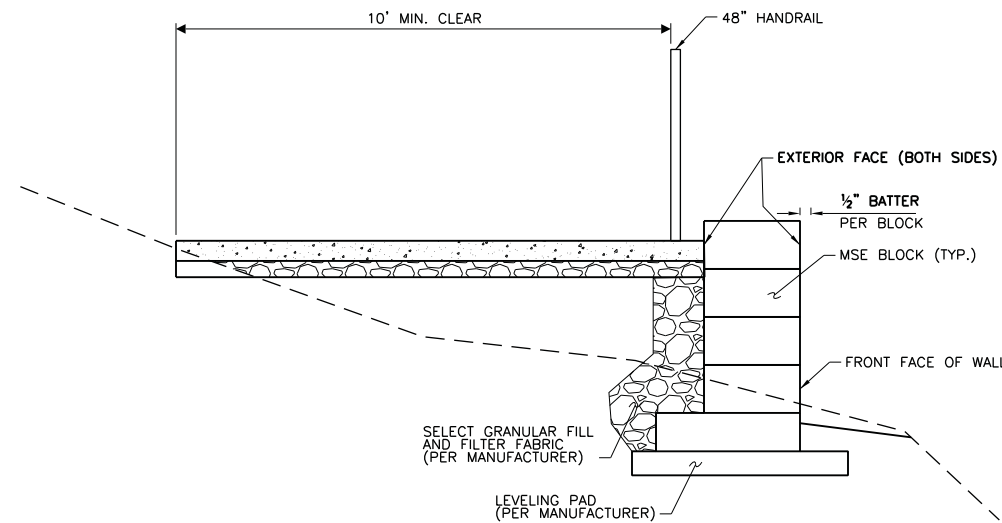


SET 1/2" REBAR WITH CAP WESTSIDE ACCESS RD EAST SIDE OF CREEK
N = 1131525.7880
E = 1694249.0820



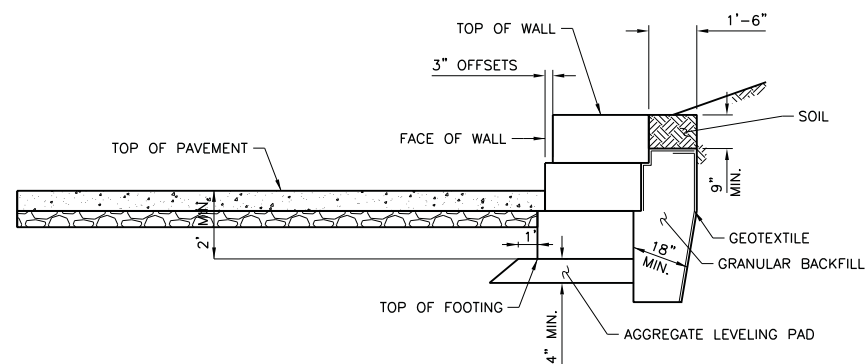
TRAIL TYPICAL SECTION

STA. 10+29.76 TO STA. 31+49.00 (EXCEPT BRIDGE), W = 10'
 STA. 31+44.00 TO STA. 33+05.00, W = 11'
 STA. 33+05.00 TO STA. 42+01.50, W = 10'



MSE RETAINING WALL SECTION

STA. 31+40.86 TO STA. 33+05.00, LT. & RT. (NO. 3 & 4)



STACKED LIMESTONE RETAINING WALL SECTION

STA. 15+86.15 TO STA. 16+66.60, RT. (NO. 1)
 STA. 27+10.00 TO STA. 28+14.00, LT. (NO. 2)

GENERAL NOTES

- "GUIDE FOR THE DEVELOPMENT OF BICYCLE FACILITIES", 2012, AASHTO IS HEREBY INCORPORATED, EXCEPT AS OTHERWISE SHOWN.
- ALL SIGNAGE TO CONFORM TO "MANUAL ON UNIFORM TRAFFIC CONTROL DEVICES FOR STREETS AND HIGHWAYS" (MUTCD), LATEST RELEASE AND EDITIONS. POSTS TO BE 1 3/4" SQUARE 14 GAUGE.
- TRAIL ALIGNMENTS MAY BE ADJUSTED TO MEET FIELD CONDITIONS AS APPROVED BY THE ENGINEER.
- UTILITIES SHOWN MEET FHWA SUBSURFACE UTILITY ENGINEERING QUALITY LEVEL B. UNDERGROUND LOCATIONS SHOWN, AS FURNISHED BY THEIR LESSORS, ARE APPROXIMATE AND SHOULD BE VERIFIED IN THE FIELD AT THE TIME OF CONSTRUCTION. FOR ACTUAL FIELD LOCATIONS OF UNDERGROUND UTILITIES, CALL 1-800-344-7233. LAW REQUIRES 48 HOURS NOTICE. UNDERGROUND UTILITY LOCATIONS SHALL BE DETERMINED IN THE FIELD BY EACH UTILITY COMPANY AT THE REQUEST OF THE CONTRACTOR WHERE NECESSARY. IT SHALL BE THE CONTRACTOR'S RESPONSIBILITY TO ASCERTAIN WHETHER ANY ADDITIONAL FACILITIES OTHER THAN THOSE SHOWN ON THE PLANS MAY BE PRESENT AND THEIR EXACT HORIZONTAL AND VERTICAL LOCATIONS AS NEEDED.
- ALL NECESSARY UTILITY RELOCATIONS AND SERVICE LINE RECONNECTIONS SHALL BE PERFORMED PRIOR TO OR CONCURRENTLY WITH CONSTRUCTION. CONTRACTOR SHALL BE REQUIRED TO COOPERATE AND SCHEDULE WITH UTILITY COMPANIES TO FACILITATE RELOCATIONS DURING CONSTRUCTION.
- ALL TREES, SHRUBS, BUSHES, AND BRUSH WITHIN THE CONSTRUCTION LIMITS OF THE PROJECT SHALL BE REMOVED BY THE CONTRACTOR UNLESS SPECIFICALLY INDICATED TO BE SAVED ON THE PLANS. CONTRACTOR SHALL CONDUCT HIS CONSTRUCTION ACTIVITIES TO MINIMIZE THE AMOUNT OF CLEARING AND GRUBBING. LARGE TREES THAT ARE NOT SHOWN ON THE PLANS SHALL BE BROUGHT TO THE ATTENTION OF THE ENGINEER PRIOR TO DISTURBANCE AND SHALL BE SPARED, BY ADJUSTING THE PROJECT CONSTRUCTION LIMITS DURING CONSTRUCTION OR REMOVED, AS DIRECTED BY THE ENGINEER.
- TREES AND SHRUBS ADJACENT TO CONSTRUCTION AREAS SHALL BE PROTECTED BY THE CONTRACTOR. DAMAGE OR CUT SURFACE AREAS ON TREES OR SHRUBS SHALL BE PAINTED WITH AN ACCEPTED PRUNING PAINT SPECIALLY FORMULATED FOR HORTICULTURE APPLICATION. ALL TREES AND BRUSH, WHICH MUST BE REMOVED FOR PROPER EXECUTION OF THE WORK, SHALL BE REMOVED BY CONTRACTOR.
- ALL WORK SHALL BE CONFINED WITHIN THE EASEMENTS AND/OR CONSTRUCTION LIMITS. ANY DISTURBANCE OF EXISTING CONDITIONS OUTSIDE THE GRADING LIMITS SHALL BE REPAIRED PROMPTLY TO THE ORIGINAL CONDITION AT THE CONTRACTOR'S EXPENSE, UNLESS OTHER WRITTEN ARRANGEMENTS HAVE BEEN MADE.
- ALL DEBRIS AND WASTE SHALL BE REMOVED FROM THE JOB SITE IMMEDIATELY AND DISPOSED OF AT A SITE FURNISHED BY THE CONTRACTOR. NO STOCKPILING ON SITE WILL BE ALLOWED.
- ALL DISTURBED AREAS SHALL BE SEEDED OR SODDED AS SOON AS FINISH GRADING IS COMPLETED OR AS OTHERWISE DIRECTED BY THE ENGINEER.
- THE CONTRACTOR SHALL MAINTAIN THE CONSTRUCTION SITE IN A CLEAN, ORDERLY AND SAFE CONDITION AT ALL TIMES DURING THE COURSE OF THE PROJECT.
- THE CONTRACTOR SHALL CONTROL THE EROSION AND SILTATION DURING ALL PHASES OF CONSTRUCTION, AND SHALL KEEP ALL STREETS CLEAN OF MUD AND DEBRIS.

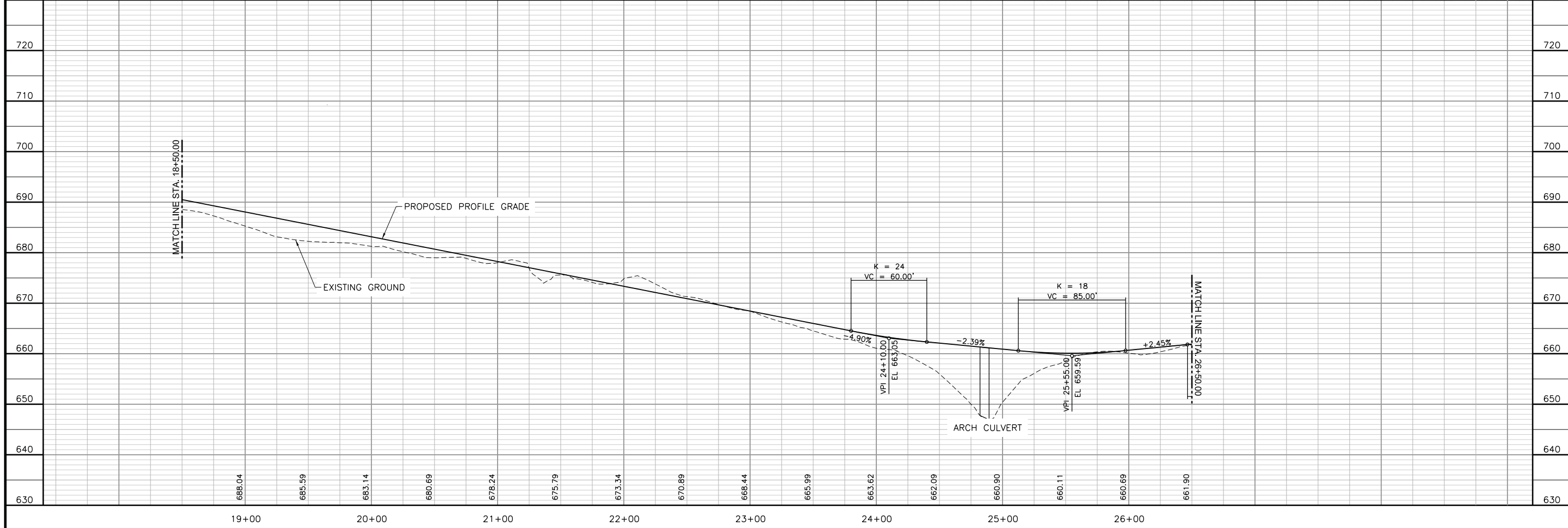
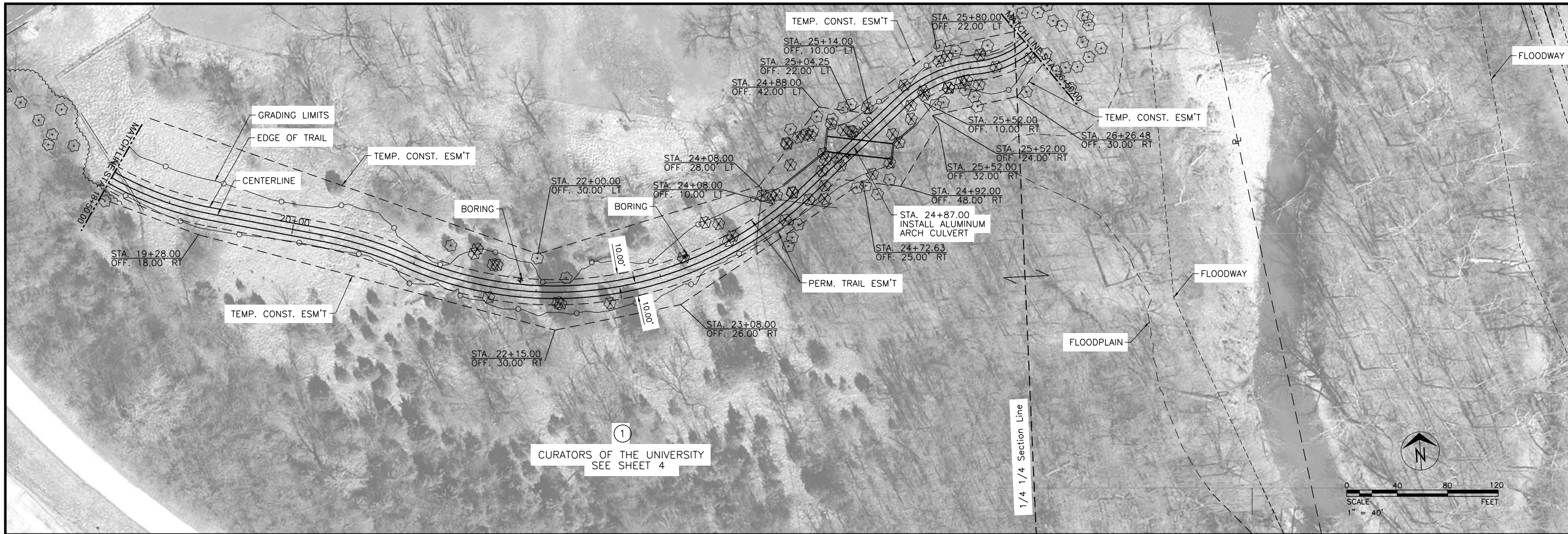
TRAIL NOTES

- ALL CONCRETE JOINTS SHALL BE AT RIGHT ANGLES TO THE ALIGNMENT OF THE TRAIL AND MEET THE REQUIREMENTS INDICATED BELOW. THE CONTRACTOR SHALL LAYOUT THE JOINTS FOR APPROVAL BY THE ENGINEER PRIOR TO SAW CUTTING. CONTRACTION JOINTS SHALL BE SAW CUT IN CONCRETE TO CREATE SQUARE PANELS, MATCHING THE WIDTH OF THE TRAIL. CONTRACTION JOINTS SHALL BE ONE-EIGHTH (1/8) INCH WIDE BY ONE (1) INCH DEEP. TOOLED JOINTS ARE NOT ALLOWED.
- ONE-HALF (1/2) INCH THICK EXPANSION JOINTS SHALL BE PLACED WHERE THE TRAIL ABUTS OTHER STRUCTURES AND AT 250 FOOT INTERVALS ALONG THE TRAIL. EXPANSION JOINTS SPACING MAY BE INCREASED TO 300 FOOT INTERVALS FOR MACHINE LAID TRAILS IF 3/4" JOINT FILLER IS USED. EXPANSION JOINTS SHALL BE FORMED BY PREFORMED JOINT FILLER, EXTENDING THE FULL DEPTH OF THE SLAB, AND SECURED SO THAT THEY ARE NOT MOVED BY DEPOSITING AND COMPACTION OF CONCRETE.
- CONCRETE FINISHING: MEDIUM TRANSVERSE BROOM FINISH WITH NO EDGE TOOLING VISIBLE AFTER BROOM FINISH. SURFACE TO BE FREE OF DEFECTS, DISCOLORATION, AND DAMAGE FROM VANDALISM.
- CROSS-SLOPES CONSTRUCTED STEEPER THAN 2% ARE NOT COMPLIANT WITH THE AMERICANS WITH DISABILITIES ACT AND MUST BE MADE COMPLIANT AT THE CONTRACTOR'S EXPENSE. CONTRACTOR MUST REPLACE THE NONCOMPLIANT SECTIONS AT THE NEAREST JOINTS.
- ALL CONCRETE SHALL BE 4,000 PSI.

TRAIL ALIGNMENT

CURVE	P.C. STA.	NORTH.	EAST.	DELTA	FOR. BEAR.	TAN.	RAD.
TRAIL-1	10+45.79	1,131,908.02	1,692,898.17	56° 19' 11.67" LT	S 56° 55' 37.08" E	26.76'	50.00'
TRAIL-2	10+94.94	1,131,866.65	1,692,920.88	52° 15' 42.72" RT	S 4° 39' 54.36" E	24.53'	50.00'
TRAIL-3	14+43.98	1,131,526.38	1,692,968.11	14° 50' 52.40" RT	S 10° 10' 58.04" W	15.64'	120.00'
TRAIL-4	14+75.08	1,131,495.41	1,692,966.61	39° 04' 46.49" LT	S 28° 53' 48.46" E	28.39'	80.00'
TRAIL-5	16+42.74	1,131,343.59	1,693,029.97	49° 19' 22.06" LT	S 78° 13' 10.51" E	34.43'	75.00'
TRAIL-6	17+07.31	1,131,306.42	1,693,080.32	34° 02' 07.95" RT	S 44° 11' 02.57" E	45.91'	150.00'
TRAIL-7	17+96.41	1,131,264.12	1,693,157.26	31° 19' 25.10" LT	S 75° 30' 27.67" E	70.09'	250.00'
TRAIL-8	20+24.94	1,131,173.33	1,693,362.91	13° 09' 39.14" RT	S 62° 20' 48.53" E	34.61'	300.00'
TRAIL-9	20+93.85	1,131,148.61	1,693,427.07	67° 10' 43.79" LT	N 50° 28' 27.68" E	192.60'	290.00'
TRAIL-10	25+38.82	1,131,248.58	1,693,827.17	37° 53' 01.25" RT	N 88° 21' 28.93" E	34.32'	100.00'
TRAIL-11	26+04.94	1,131,271.40	1,693,887.95	84° 47' 52.88" LT	N 3° 33' 36.05" E	68.48'	75.00'
TRAIL-12	27+88.08	1,131,413.72	1,693,965.13	84° 23' 07.41" RT	N 87° 56' 43.45" E	22.66'	25.00'
TRAIL-13	32+17.95	1,131,499.43	1,694,330.21	13° 19' 07.07" LT	N 15° 22' 23.62" W	35.03'	300.00'
TRAIL-14	32+87.68	1,131,568.20	1,694,319.67	31° 15' 23.21" RT	N 15° 52' 59.59" E	134.27'	480.00'
TRAIL-15	35+49.54	1,131,826.82	1,694,320.82	15° 34' 25.95" LT	N 0° 18' 33.64" E	51.28'	375.00'
TRAIL-16	36+51.47	1,131,927.42	1,694,335.13	36° 33' 09.30" RT	N 36° 51' 42.94" E	39.63'	120.00'
TRAIL-17	37+28.02	1,131,998.76	1,694,359.12	111° 07' 59.43" RT	S 32° 00' 17.63" E	72.93'	50.00'
TRAIL-18	38+25.00	1,131,995.27	1,694,441.52	112° 59' 42.37" LT	N 35° 00' 00.00" E	45.32'	30.00'
TRAIL-19	39+43.75	1,132,042.77	1,694,525.71	110° 00' 00.00" RT	S 35° 00' 00.00" E	28.57'	20.00'
TRAIL-20	40+43.45	1,131,992.56	1,694,593.64	99° 09' 15.64" LT	N 45° 50' 44.36" E	23.48'	20.00'
TRAIL-21	41+56.51	1,132,044.33	1,694,680.24	38° 35' 42.79" LT	N 7° 15' 01.58" E	14.01'	40.00'

Revision									
By									
Date									
No.									
SHEPARD TO ROLLINS TRAIL CONNECTION									
Typical Sections, Alignment Tabulation, and General Notes									
City of Columbia, Missouri Department of Public Works									
JOHN ZIMMERMANN Registered Professional Engineer [ENGINEER NUMBER]									
Proj. No. CPP-9999 (523) File No. P101160118 Scale: No Scale Date: 4/17/2017 Des. K.M.B. Dwn. K.M.B. Chk. J.W.Z.									
Sheet 3 of 18									



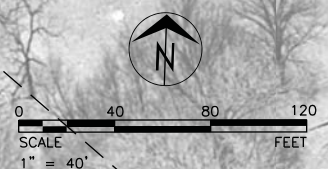
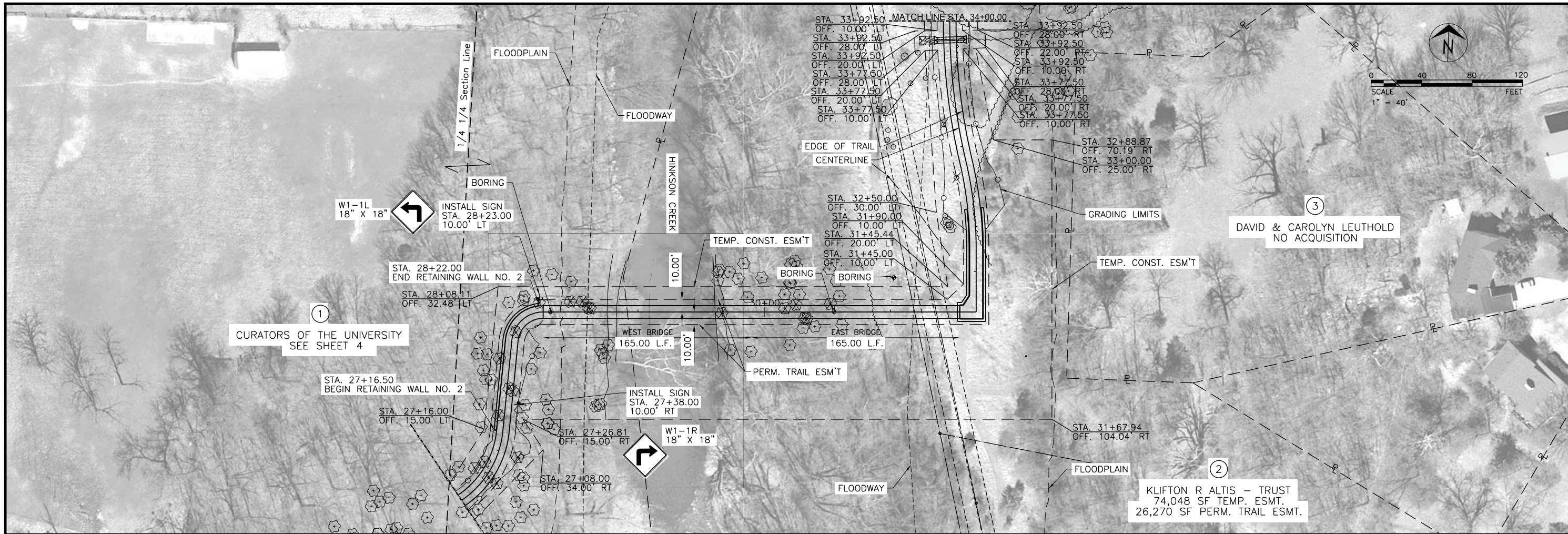
Revision	By	Date	No.

SHEPARD TO ROLLINS
TRAIL CONNECTION
 Plan & Profile - Sta. 18+50.00 to Sta. 26+50.00

City of Columbia, Missouri
 Department of Public Works

720
710
700
690
680
670
660
650
640
630

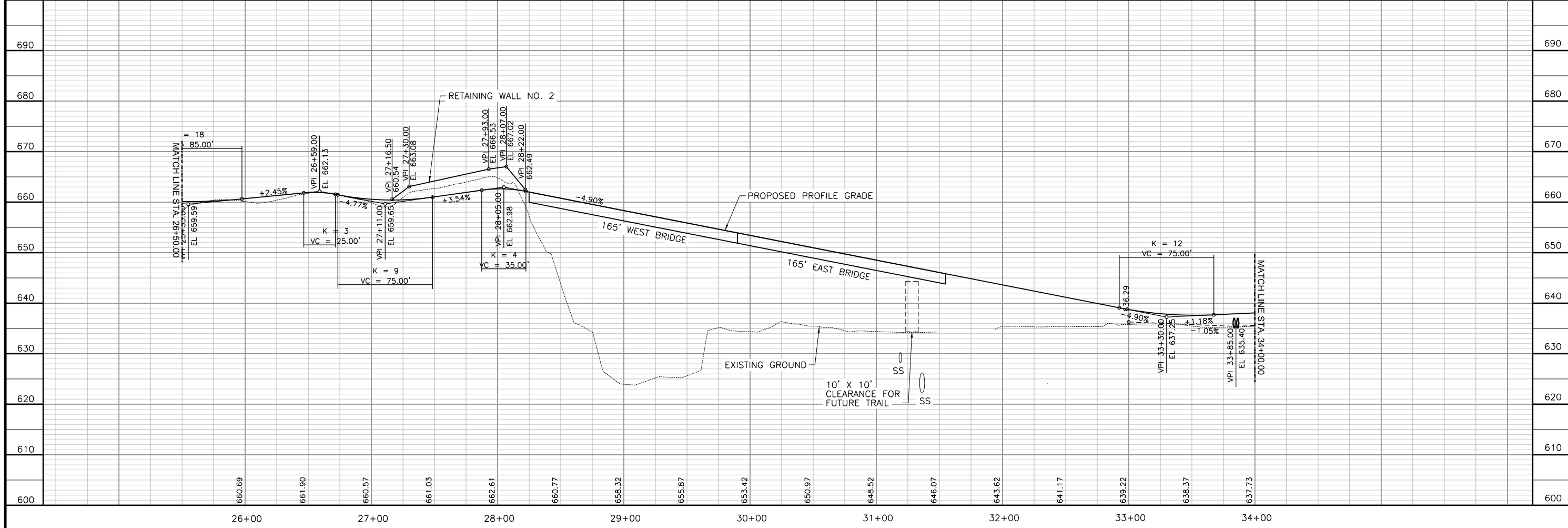
JOHN ZIMMERMANN
 Registered Professional Engineer
 [ENGINEER NUMBER]
 Proj. No. CPP-9999 (523)
 File No. P101160118
 Scale: 1" = 40'
 Date: 4/17/2017
 Des. K.M.B.
 Dwn. K.M.B.
 Chk. JW.Z.



No.	Date	By	Revision

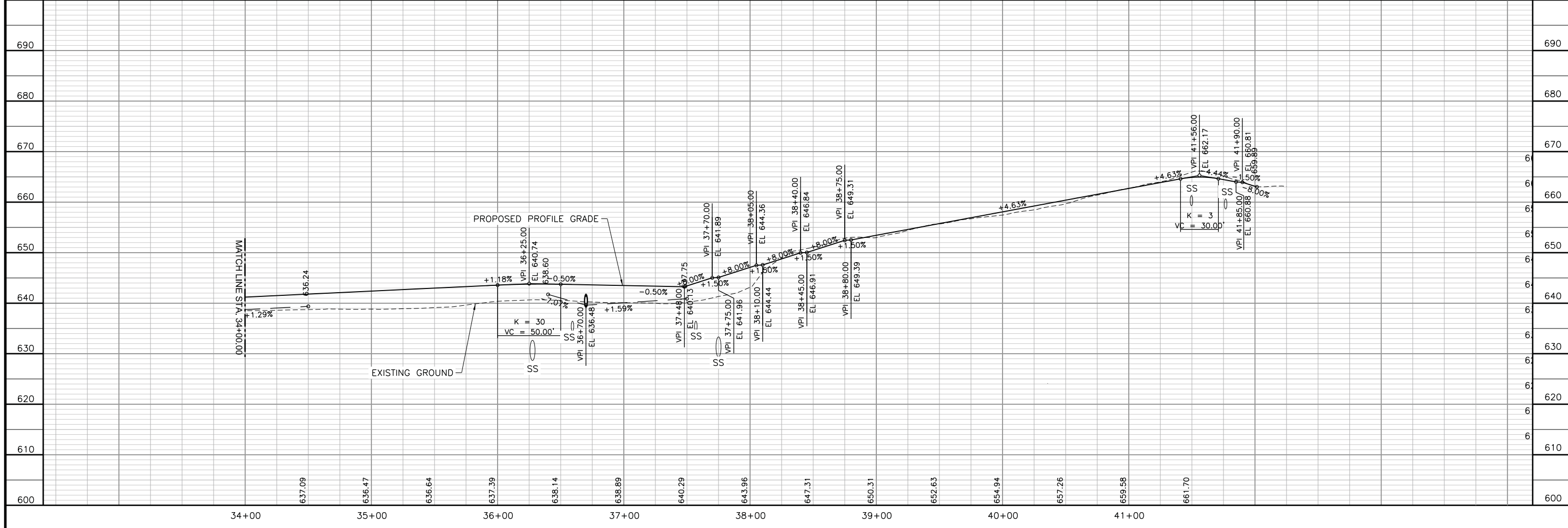
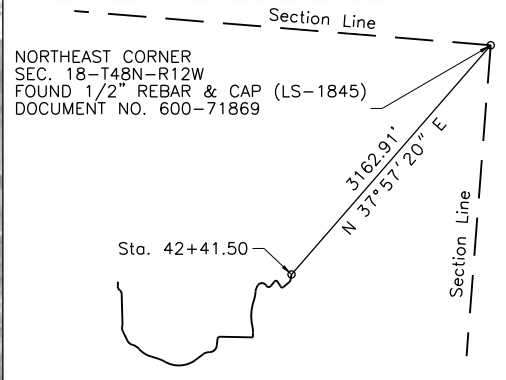
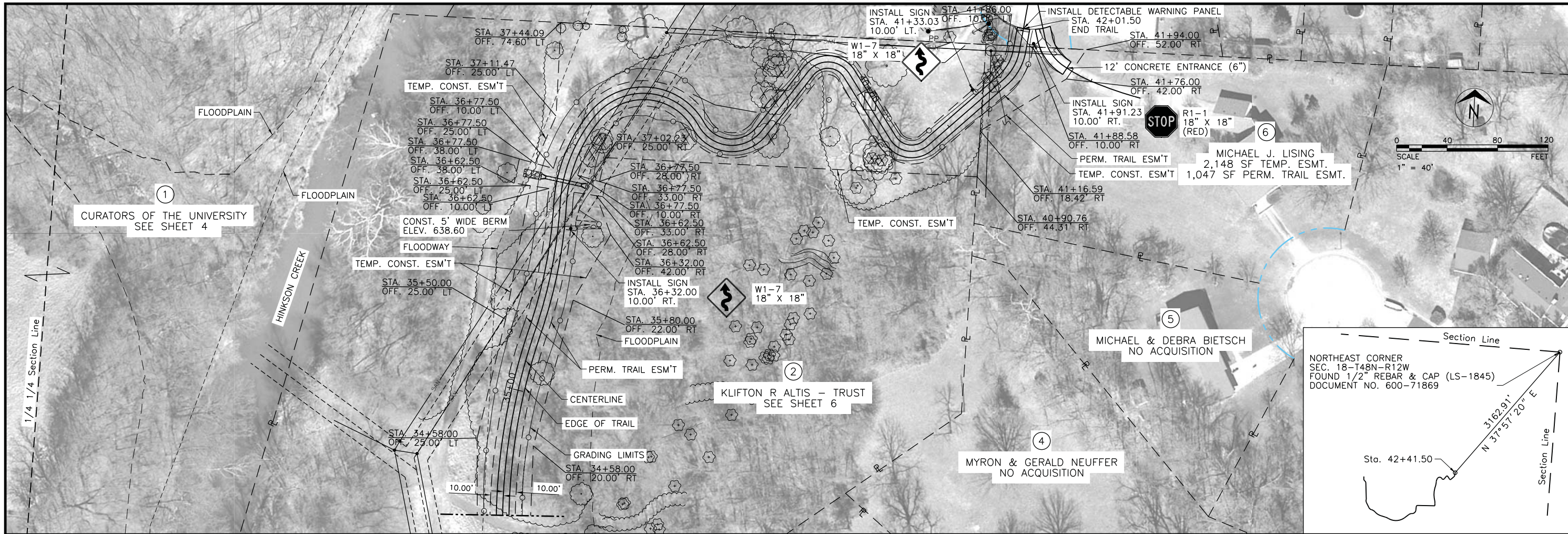
**SHEPARD TO ROLLINS
TRAIL CONNECTION**
Plan & Profile - Sta. 26+50.00 to Sta 34+00.00

City of Columbia, Missouri
Department of Public Works



690	690
680	680
670	670
660	660
650	650
640	640
630	630
620	620
610	610
600	600

JOHN ZIMMERMANN
Registered Professional Engineer
[ENGINEER NUMBER]
Proj. No. CPP-9999 (523)
File No. P101160118
Scale: 1" = 40'
Date: 4/17/2017
Des. K.M.B.
Dwn. K.M.B.
Chk. J.W.Z



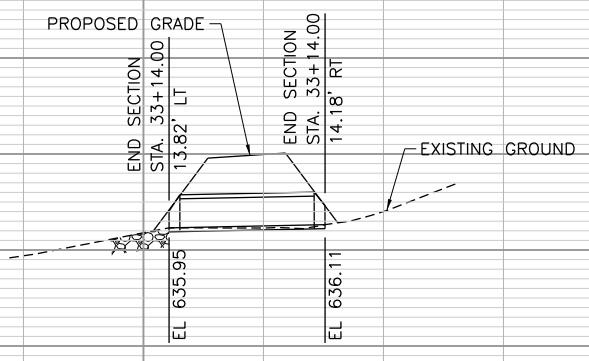
No.	Date	By	Revision

SHEPARDT ROLLINS
TRAIL CONNECTION
 Plan & Profile - Sta. 34+00.00 to Sta. 41+97.61

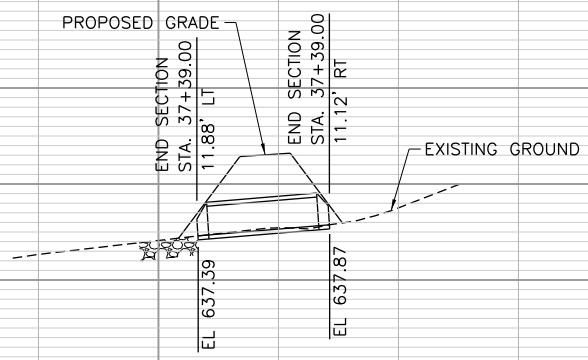
City of Columbia, Missouri
 Department of Public Works

JOHN ZIMMERMANN
 Registered Professional Engineer
 [ENGINEER NUMBER]

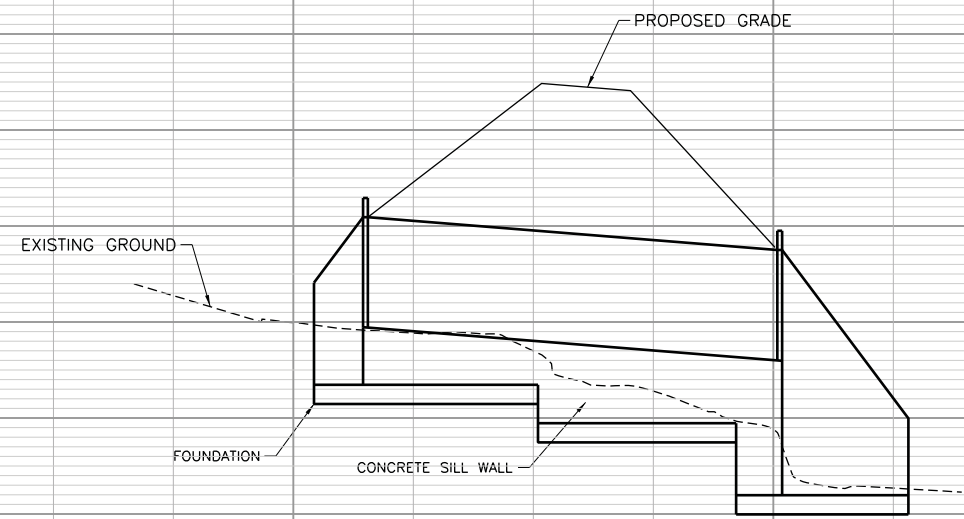
Proj. No. CPP-9999 (523)
 File No. P101160118
 Scale: 1" = 40'
 Date: 4/19/2017
 Des. K.M.B.
 Dwn. K.M.B.
 Chk. J.W.Z



28.00 L.F. OF
18" RCP - CLASS III
@ 0.50%
CULVERT AT STA. 33+14.00



23.00 L.F. OF
18" RCP - CLASS III
@ 2.10%
CULVERT AT STA. 37+39.00



85.00 L.F. OF
11'-8" x 5'-9" ALUMINUM ARCH CULVERT
@ 2.00%
CULVERT AT STA. 24+76.00

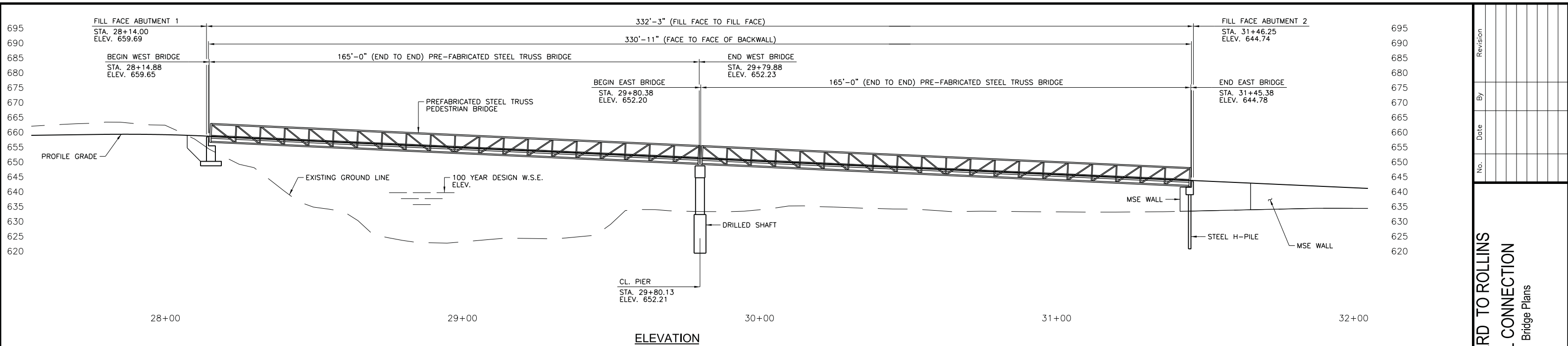
**SHEPARD TO ROLLINS
TRAIL CONNECTION**
Storm Sewer Profiles

City of Columbia, Missouri
Department of Public Works

JOHN ZIMMERMANN
Registered Professional
Engineer
[ENGINEER NUMBER]
Proj. No. CPP-9999 (523)
File No. P101160118
Scale: 1" = 20'
Date: 4/17/2017
Des. K.M.B.
Dwn. K.M.B.
Chk. J.W.Z.

No.	Date	By	Revision

c:\library\p01160118\road\consultant\cover sheet\p01160118\cover sheet.dwg



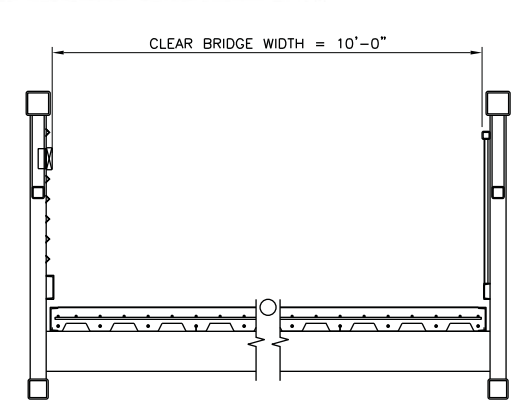
ELEVATION

HYDROLOGIC DATA	
DRAINAGE AREA	= 52.2 SQ. MILES
DESIGN DISCHARGE	= 16,520 CU. FT. / SECOND (100 YR.)
DESIGN H.W. ELEVATION	= 643.7 FT. (100 YR.)
OVERTOPPING FLOOD DATA	
DESIGN ELEVATION	= 30 YR.
DESIGN DISCHARGE	= 12,500 CU. FT. / SECOND

GENERAL NOTES:
 CONSTRUCTION SPECIFICATIONS:
 ALL CONSTRUCTION FOR THIS PROJECT SHALL CONFORM TO THE 2004 MISSOURI STANDARD SPECIFICATIONS FOR HIGHWAY CONSTRUCTION AND ANY JOB SPECIAL PROVISIONS.
 DESIGN SPECIFICATIONS:
 2009 AASHTO LRFD GUIDE SPECIFICATIONS FOR THE DESIGN OF PEDESTRIAN BRIDGES WITH 2015 INTERIM REVISIONS.
 DESIGN UNIT STRESSES:
 CLASS B CONCRETE (SUBSTRUCTURE) $f'_c=3,000$ psi
 REINFORCING STEEL (GRADE 60) $f_y=60,000$ psi



PLAN



SECTION THRU BRIDGE

No.	Date	By	Revision

SHEPARD TO ROLLINS
 TRAIL CONNECTION
 Bridge Plans

City of Columbia, Missouri
 Department of Public Works

JOHN ZIMMERMANN
 Registered Professional Engineer
 [ENGINEER NUMBER]
 Proj. No. CPP-9999 (523)
 File No. P101160118
 Scale: As Shown
 Date: 4/17/2017
 Des. J.P.C.
 Dwn. M.J.R.
 Chk. D.J.G.