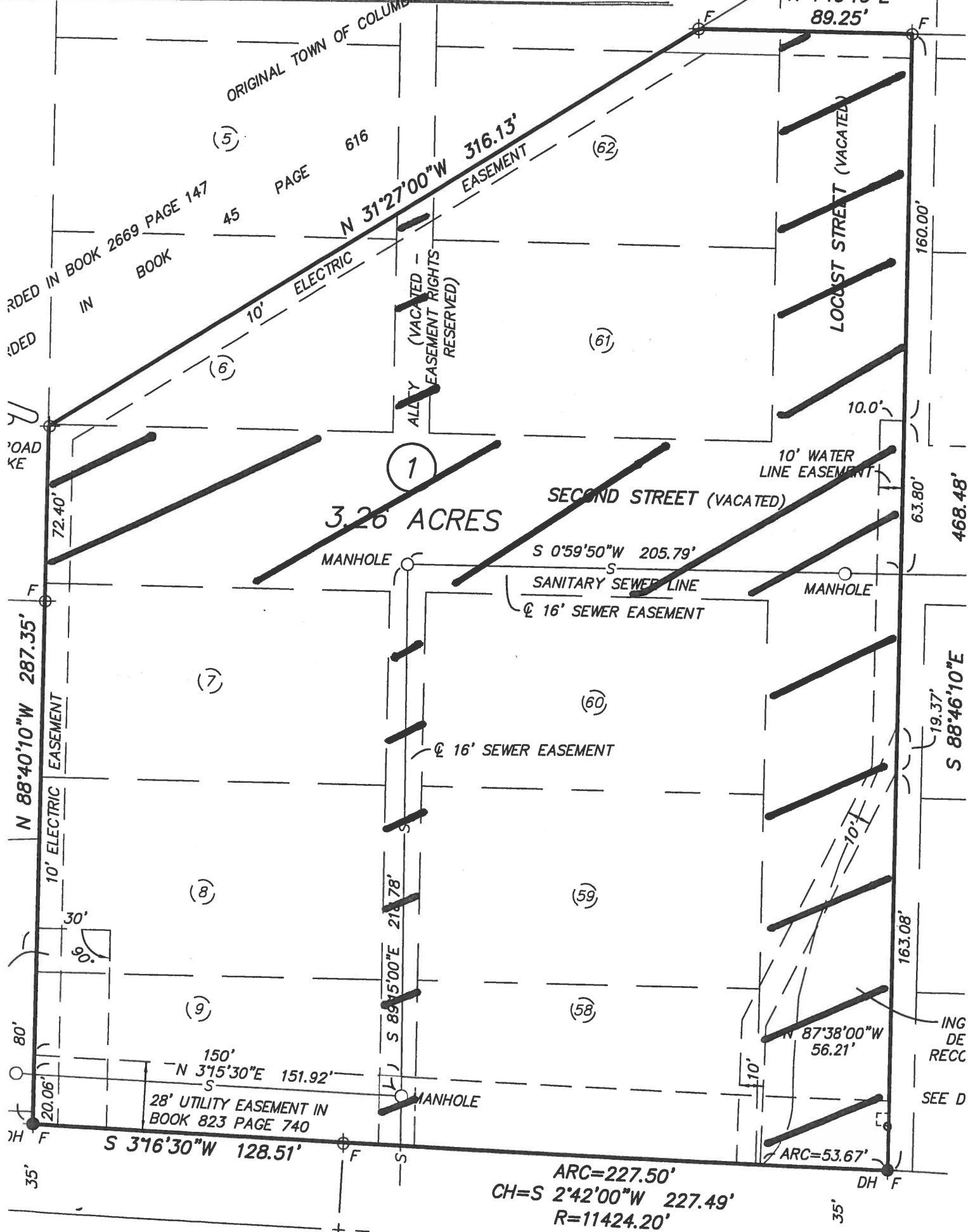


UTILITY EASEMENTS TO BE VACATED

ORIGINAL TOWN OF COLUMBIA, MISSOURI



RECORDED IN BOOK 2669 PAGE 147
 RECORDED IN BOOK 45 PAGE 616

ROAD KEY

3.26 ACRES

SECOND STREET (VACATED)

LOCUST STREET (VACATED)

S 0°59'50"W 205.79'
 SANITARY SEWER LINE
 16' SEWER EASEMENT

150'
 N 315°30'E 151.92'
 28' UTILITY EASEMENT IN
 BOOK 823 PAGE 740

ARC=227.50'
 CH=S 2°42'00"W 227.49'
 R=11424.20'

SEE D