



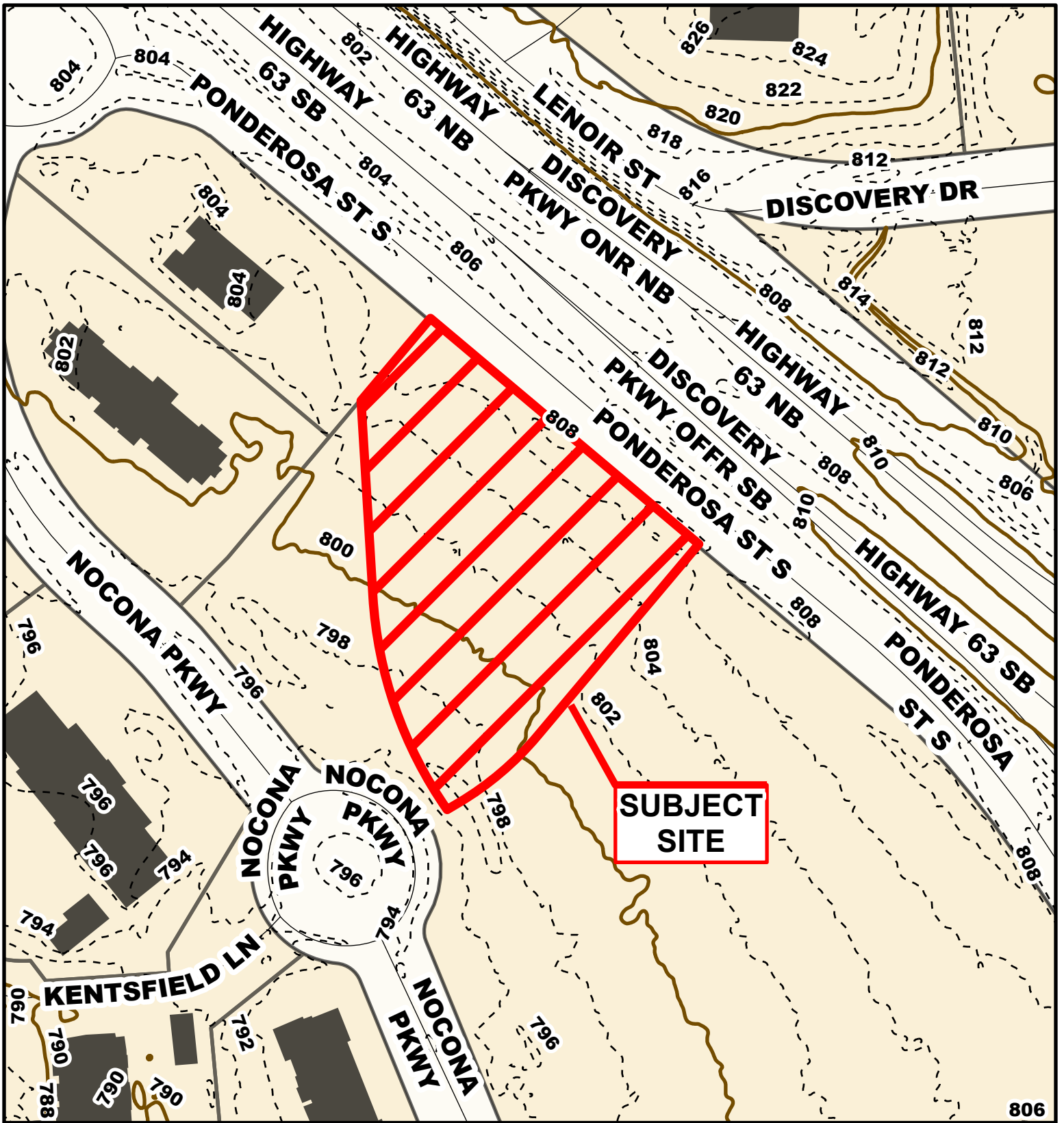
Source: Nearmap. <https://www.nearmap.com/us/en>

Case # 69-2023 - 4401 S. Ponderosa Street Rezone & PD Plan



City Zoning Parcels



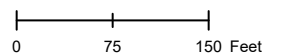


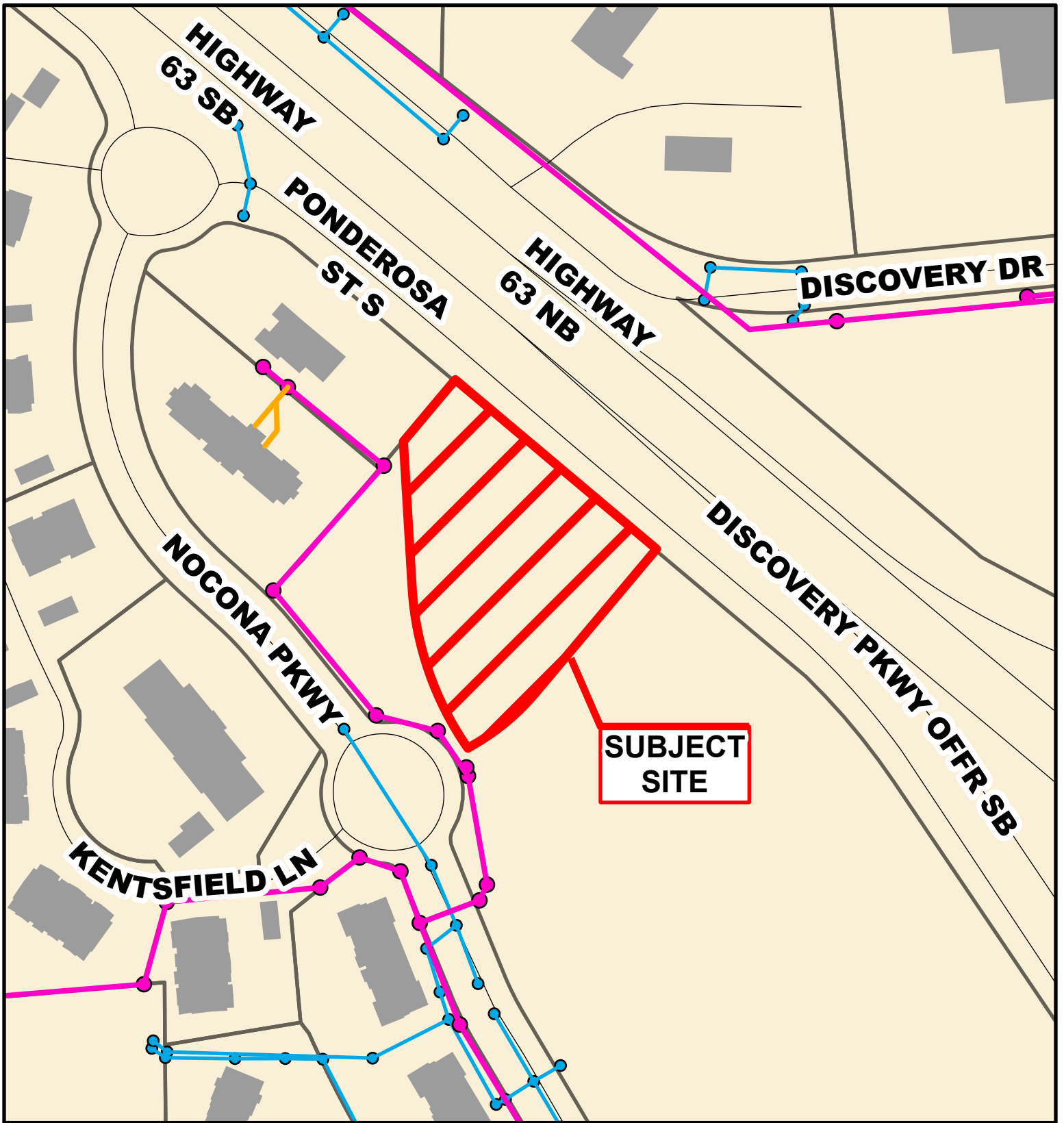
**Case # 69-2023 - 4401 S. Ponderosa Street
Rezone & PD Plan**



Parcel Data Source: Boone County Assessor
Created by The City of Columbia - Community Development Department

- 10 Foot Contour Lines
- 2 Foot Contour Lines
- Parcels





SUBJECT SITE

**Case # 69-2023 - 4401 S. Ponderosa Street
Rezone & PD Plan**



- City Sanitary Line
- City Storm Lines
- Private Sanitary Line
- Parcels

