

PREVIOUSLY APPROVED

PRELIMINARY PLAT BLUFF CREEK ESTATES PHASE I

APRIL 30, 1992
REVISED: 21 MAY '92
23 MAY '92
27 MAY '92

EXISTING UTILITIES

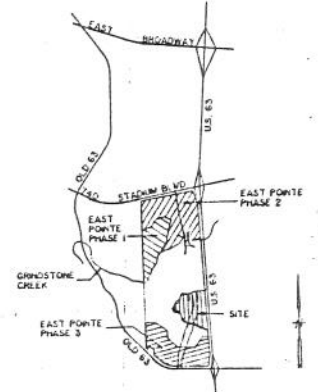
GAZ: 6" CS (300 PSI) ON WEST SIDE OF US 63 (MICHIGAN ELECTRIC).
ELECTRIC: 15,000 V SP (63 KV OVERHEAD ON WEST SIDE OF US 63 (CITY OF COLUMBIA)).
WATER: 16" DI ALONG WEST SIDE OF US 63 (CITY OF COLUMBIA).
SANITARY & STORM SEWER: AS SHOWN ON THE PLAT (CITY OF COLUMBIA).

SITE DATA

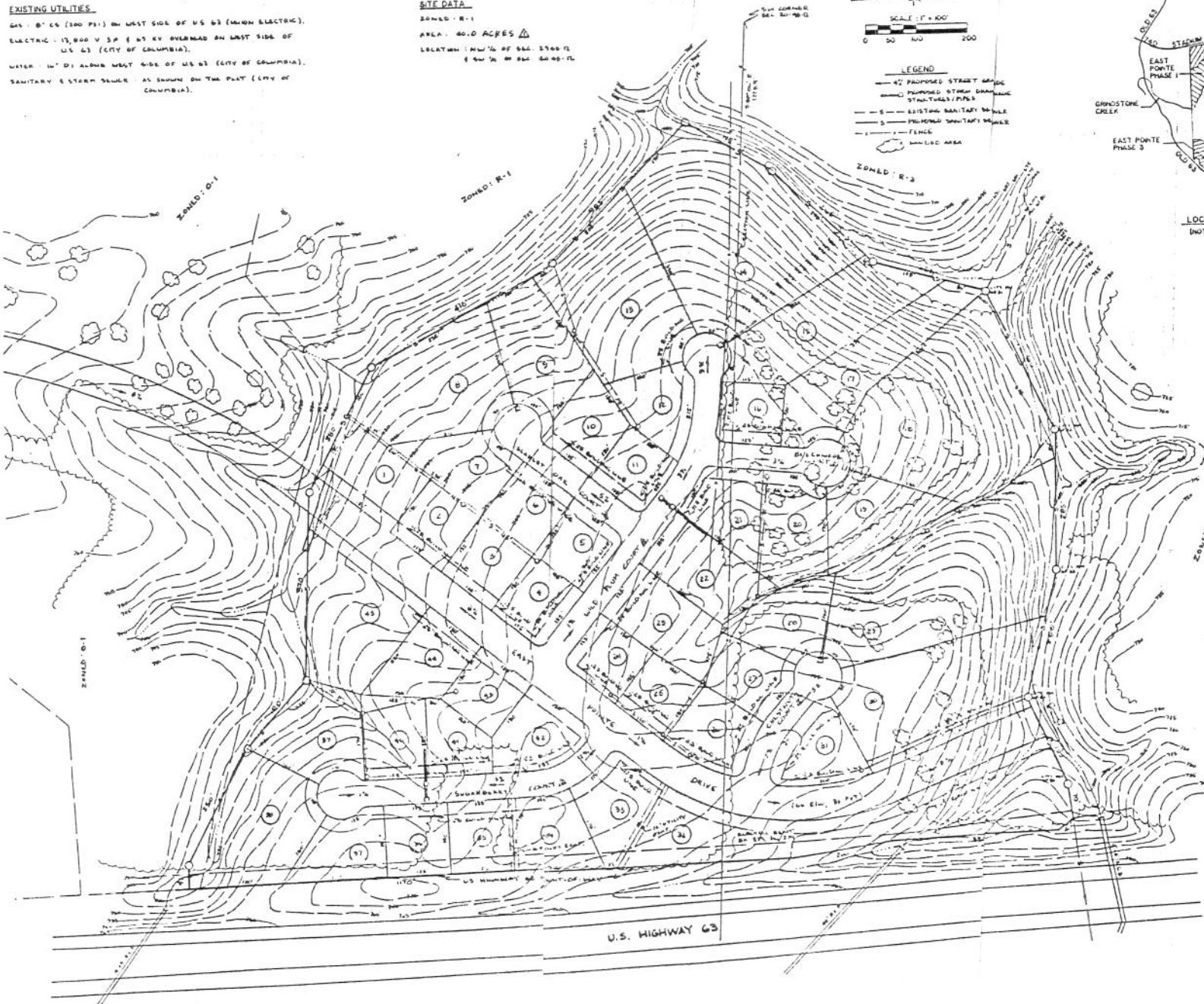
ZONED: R-1
AREA: 40.0 ACRES
LOCATION: NW 1/4 OF SEC 2766 T1
(9 1/2' IN. IN SEC. 2766-1)



- LEGEND**
- 42' PAVED STREET GRAB
 - 42' PAVED STREET DRAINAGE STRUCTURES/PIPES
 - S - EXISTING SANITARY MAIN
 - 3 - PROPOSED SANITARY MAIN
 - FENCE
 - UN-LEAS AREA



LOCATION MAP
(NOT TO SCALE)



OWNER/DEVELOPER
B.E. INVESTMENTS, INC.
400 I-70 DRIVE SW
COLUMBIA, MO 65202
(314) 445-8331

RECEIVED
MAY 28 1992
DEPARTMENT OF PLANNING

PREPARED BY
ALLSTATE CONSULTANTS
1107 VANDIVER DRIVE
COLUMBIA, MO 65202
(314) 445-8331

PLAT 201
LS 2009