

# #284-2021: Harasha Tract/Richland Road Development Annexation Agreement

	Parcels
	Boone County Zoning

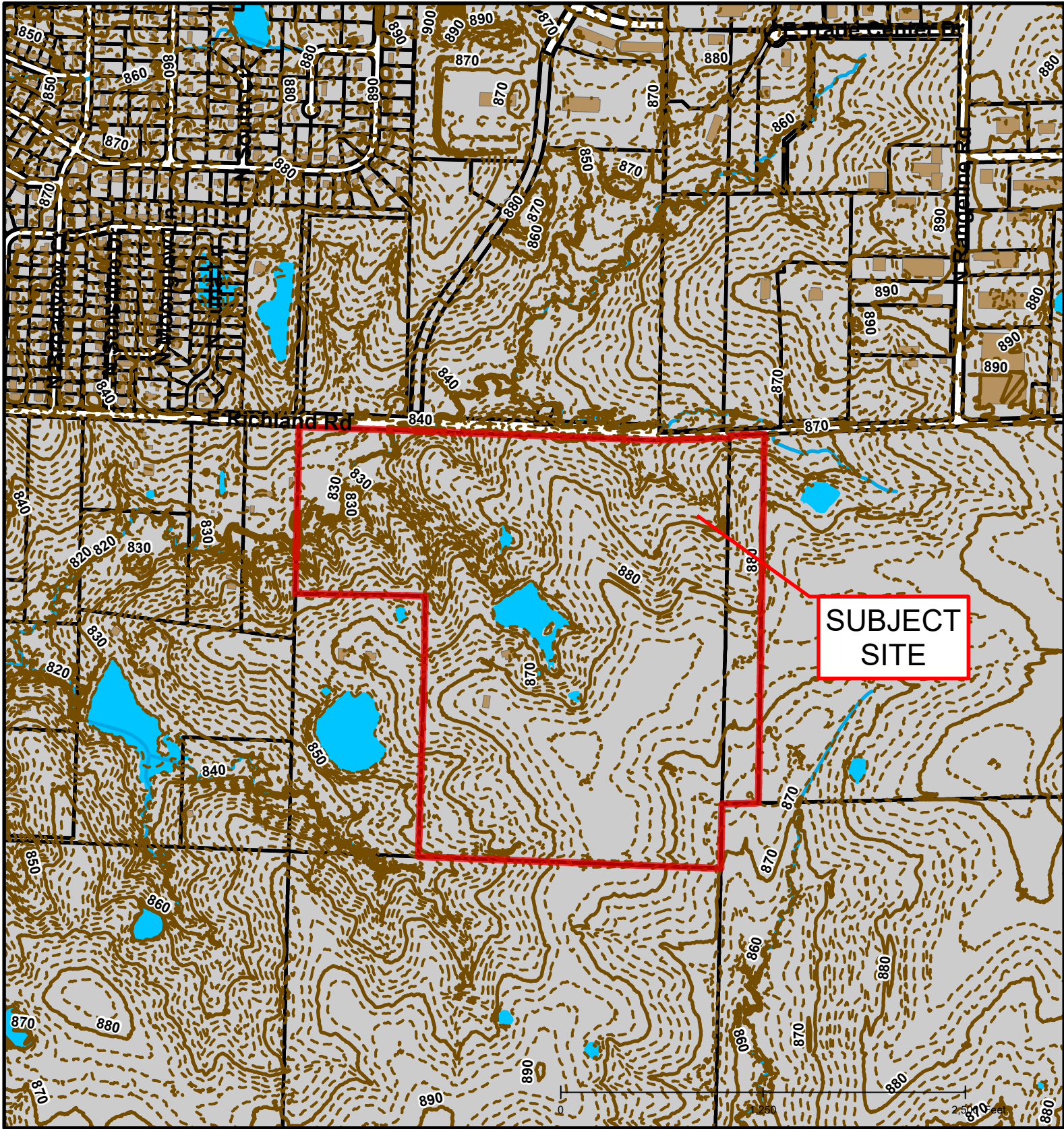


Created by The City of Columbia - Community Development Department

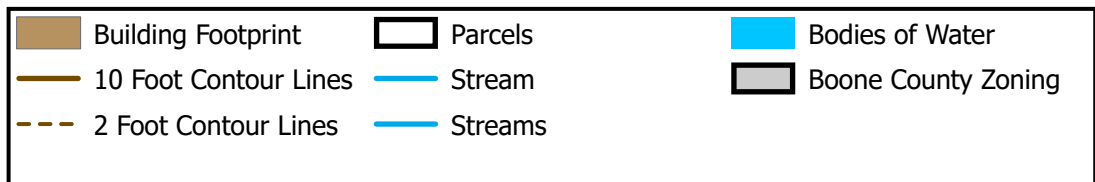
Parcel Data Source: Boone County Assessor

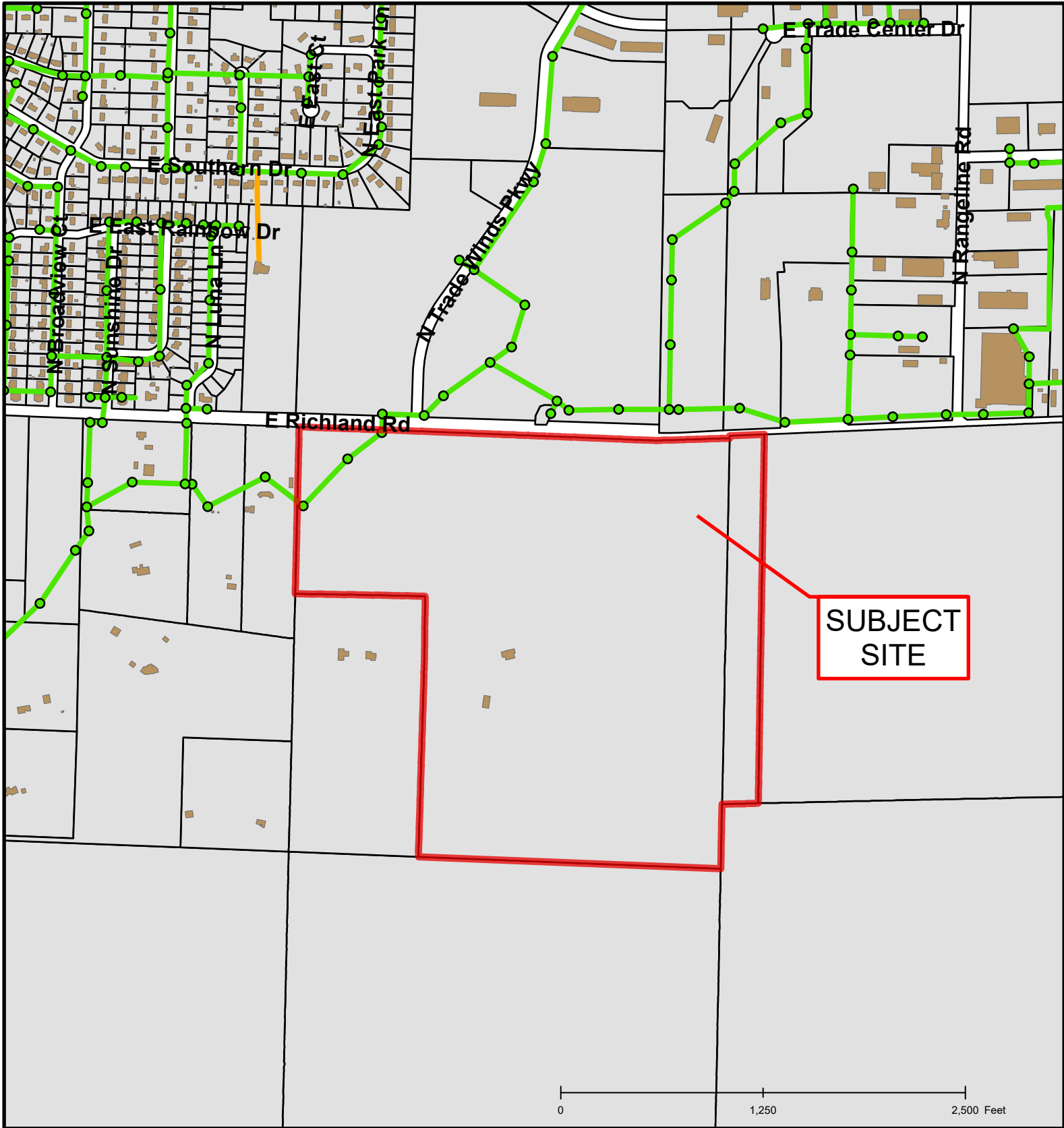
2017 Imagery: Boone County Assessor's Office

Hillshade Data: Boone County GIS



# #284-2021: Harasha Tract/Richland Road Development Annexation Agreement





# #284-2021: Harasha Tract/Richland Road Development Annexation Agreement

