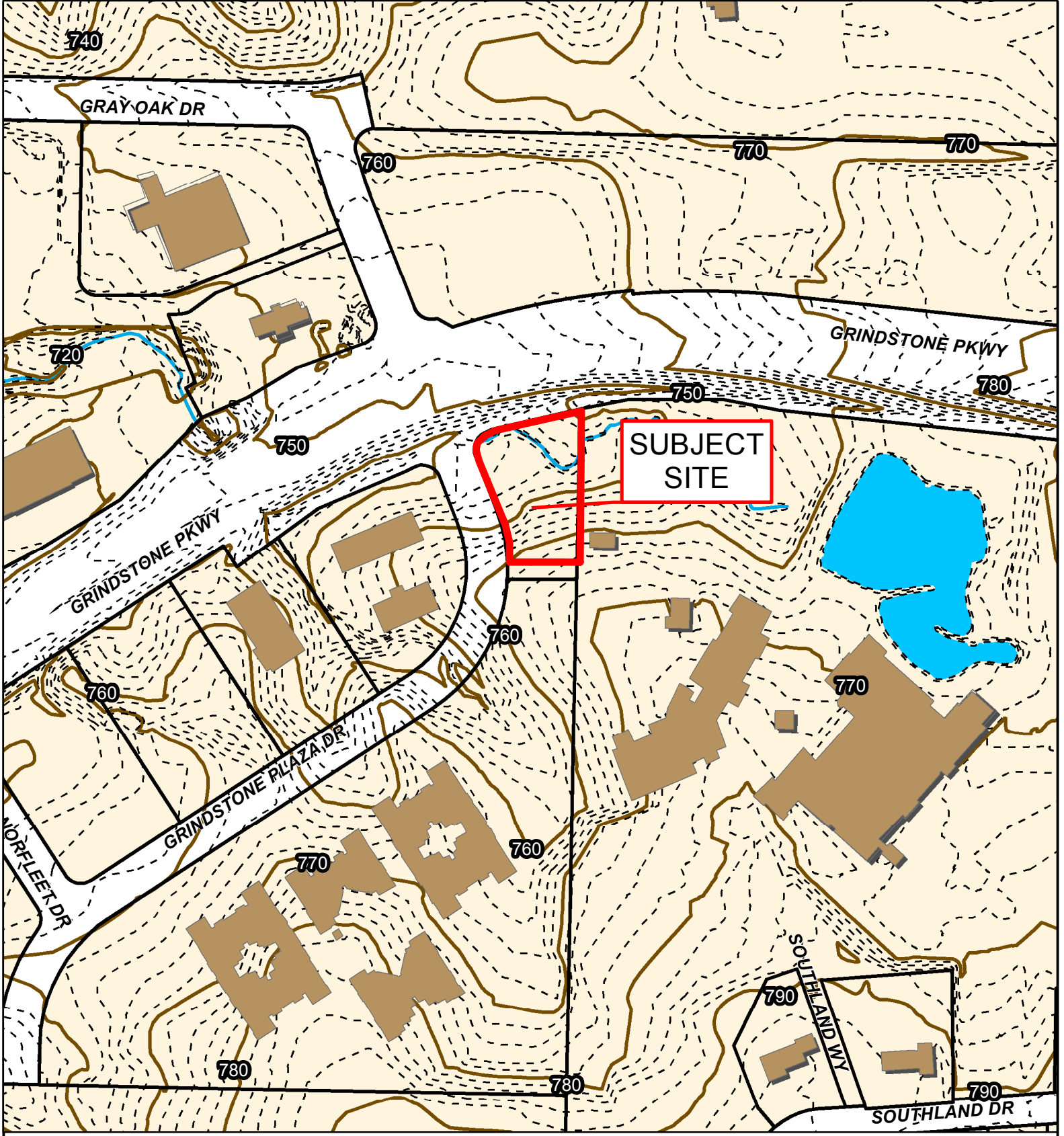


2015 Orthophoto Source: Boone County Assessor

Case #16-170: Lot 7, Red Oak South Plat No. 1 C-P Development Plan



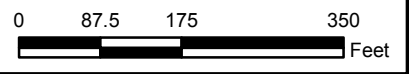
City of Columbia Zoning Parcels

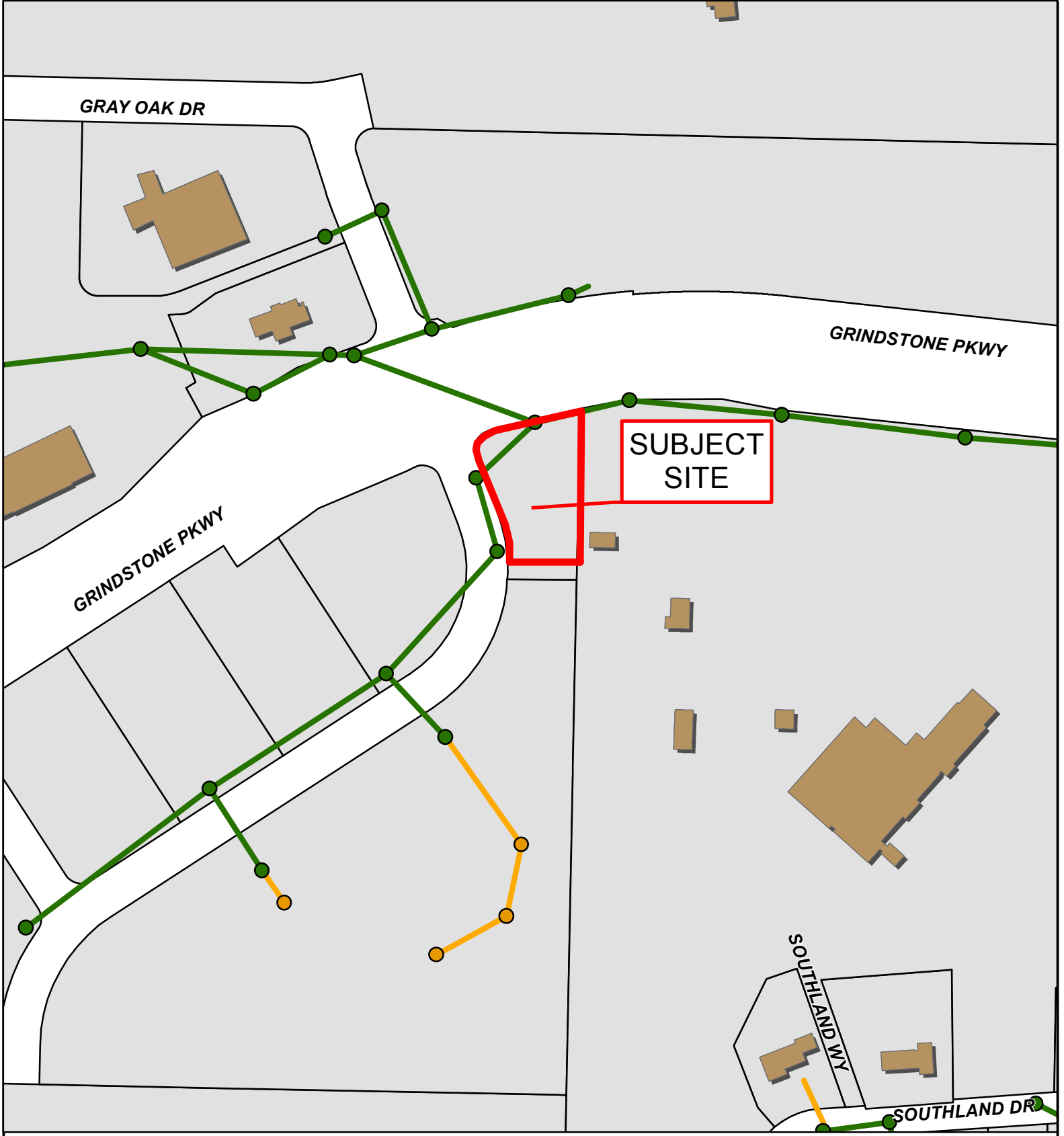


Case #16-170: Lot 7, Red Oak South Plat No. 1 C-P Development Plan



- 10 Foot Contour Lines
- 2 Foot Contour Lines
- Stream
- Parcels
- Building Footprint
- Bodies of Water
- 100-Year Flood Plain





Case #16-170: Lot 7, Red Oak South Plat No. 1 C-P Development Plan



- City Sanitary Structure
- City Sanitary Line
- Building Footprint
- Private Sanitary Structure
- Private Sanitary Line
- Parcels

