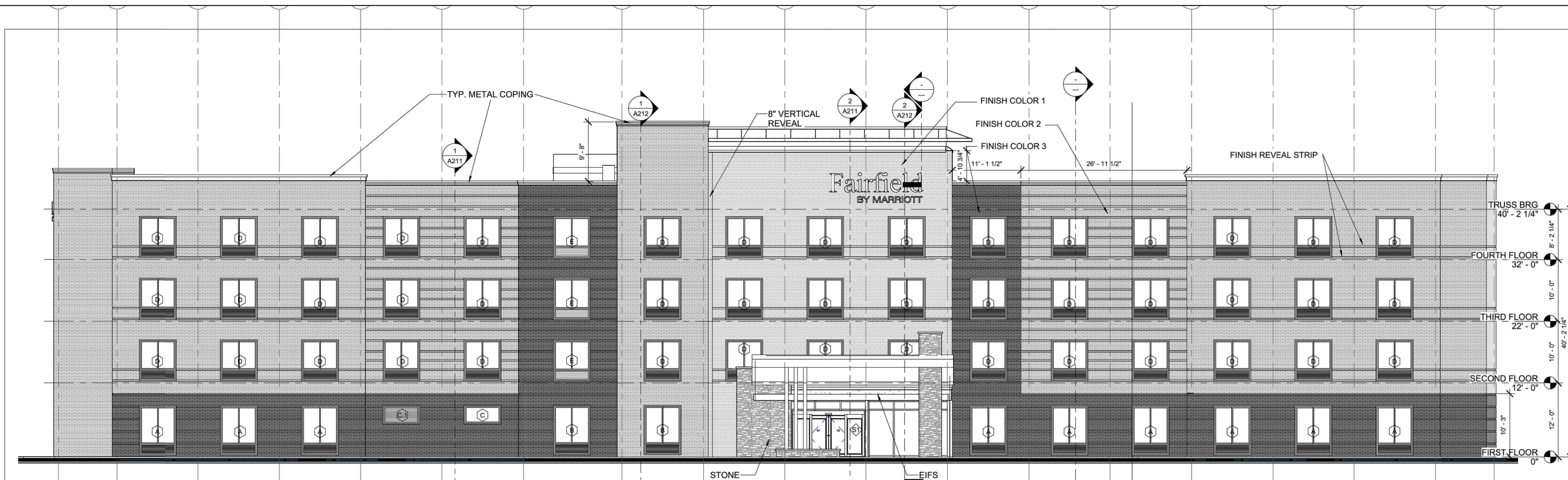
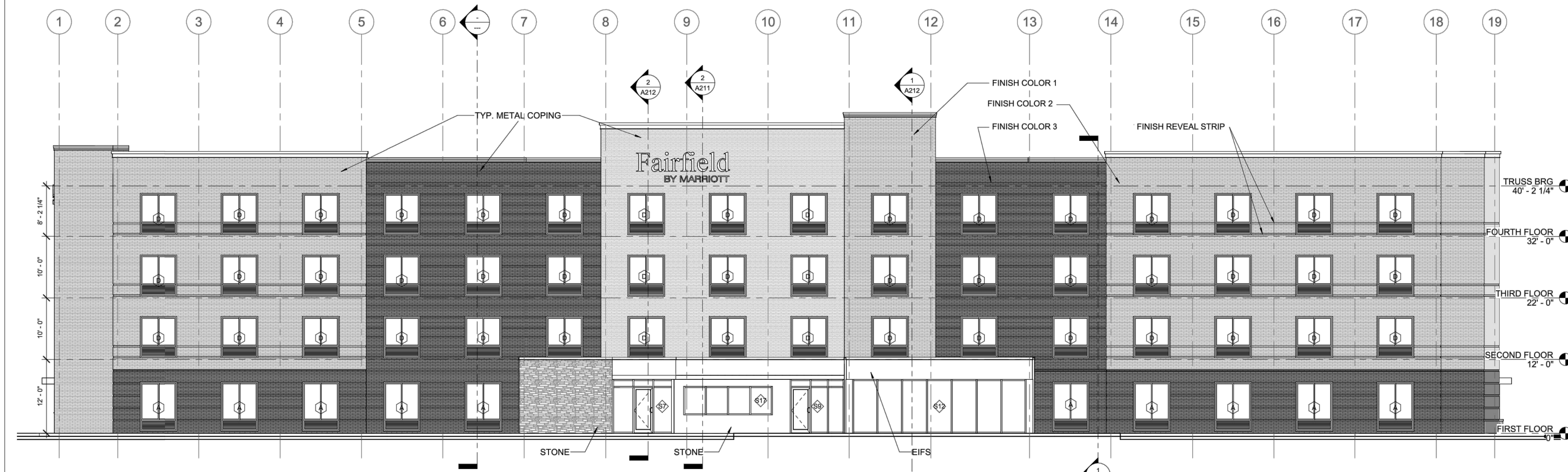


# Exhibit B



**2** EAST FACING TRU HOTEL & HWY 63  
SCALE: 1" = 10'



**1** WEST FACING NOCONA PARKWAY  
SCALE: 1" = 10'

DESIGN ALLIANCE  
architects  
6507 DELANEY BLVD., SUITE 100  
COLUMBIA, MISSOURI 65203  
PHONE 314.863.1313 FAX 314.863.1303 email: info@daa.com

A NEW HOTEL  
**FAIRFIELD INN**  
NOCONA PARKWAY  
COLUMBIA, MISSOURI

60% REVIEW

No.	Description	Date

BUILDING ELEVATIONS

Project number 2024053  
Date Issue Date

**A201**

NOTIFY ARCHITECT IN EVENT OF DISCREPANCIES, OMISSIONS, AND/OR CONFLICTS IN THE DRAWINGS OR SPECIFICATIONS. THE CONTRACTOR IS NOT AUTHORIZED TO SCALE THE DRAWINGS. ALL QUESTIONS IN REFERENCE TO THE CONTRACT DOCUMENTS SHALL BE IMMEDIATELY DIRECTED TO THE ARCHITECT.

55% MINIMUM OF FACADE TO BE GLAZING, STONE/BRICK, DOORS, LOUVERS, ARCHITECTURAL METALS, WITH A MINIMUM OF 17% FENESTRATION. MAXIMUM OF 45% OF FACADE TO BE EIFS. (NOTE: DIMENSIONS SHOWN ARE NOT FINAL AND WILL BE DETERMINED DURING BUILDING DESIGN.)

REVISIONS:

NO.	DATE
ORIGINAL	10/15/2024

THIS SHEET HAS BEEN SIGNED, SEALED AND DATED ELECTRONICALLY

EXHIBIT  
DRAWING  
NOT FOR  
CONSTRUCTION

JESSE RAY STEPHENS  
MO LICENSE: 2010000868

PREPARED BY:  
**CROCKETT**  
ENGINEERS & ARCHITECTS  
1008 W. MISSOURI BLVD.  
COLUMBIA, MISSOURI 65203  
(314) 487-0299  
www.crockettingeering.com  
Crockett Engineering Consultants, LLC  
Missouri Certificate of Authority  
#000000001

OWNER:  
P016 LLC  
4220 PHILIPS FARM ROAD  
COLUMBIA, MO 65201

# FAIRFIELD INN

DRAWING INCLUDES:

PRELIMINARY  
BUILDING  
ELEVATIONS

DESIGNED: JRS

DRAWN: JRS

PROJECT NO: 210249

SHEET:  
1/2

