





ATAS ISOLEREN STUCCO EMBOSSED PANELING 3" THICK, PROVIDES SUPERIOR R22 INSULATION TO MEET LEED STANDARDS

CHANGE IN MATERIALS TO PROVIDE VISUAL SEPARATION TO THE ELEVATION

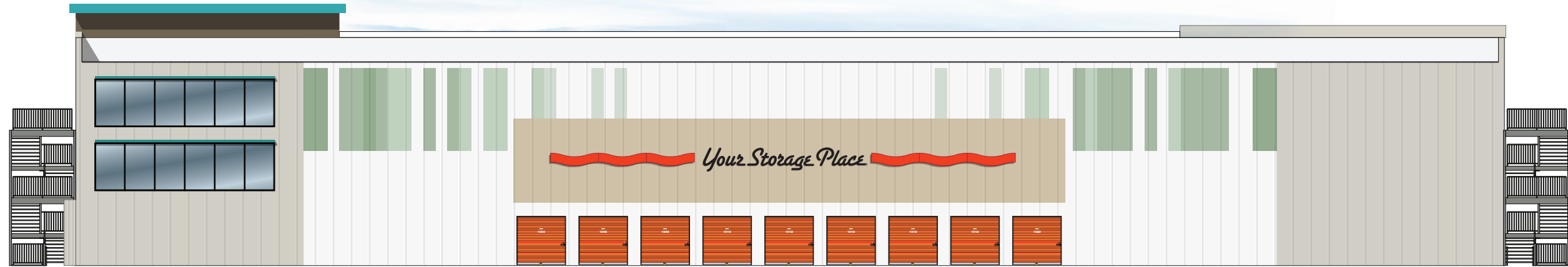
STRUCTURAL EMPHASIS ON MAIN CORNER BY PROVIDING ARTICULATION TO THE BUILDING

U-HAUL
MOVING & STORAGE AT OZARK



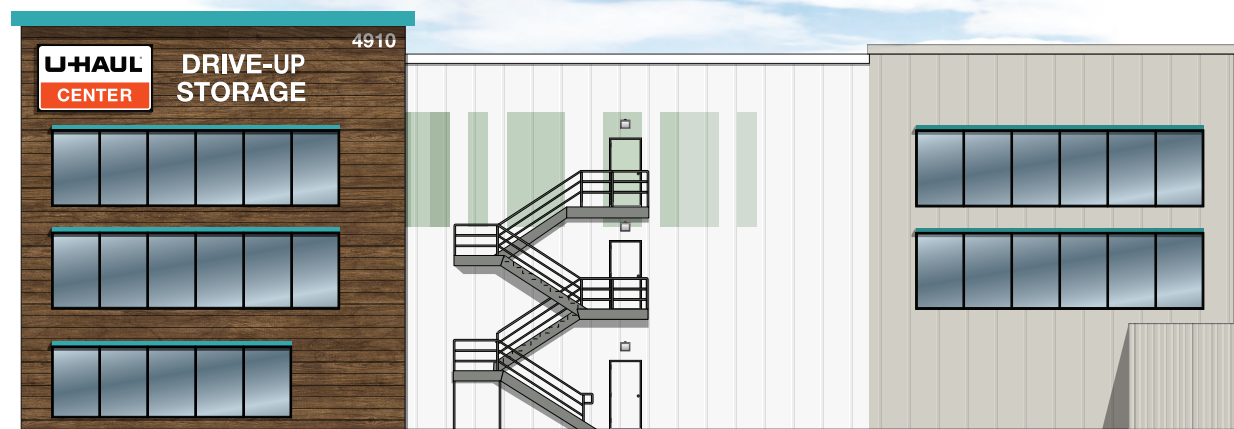
NORTH ELEVATION

Scale: 1/20" = 1'



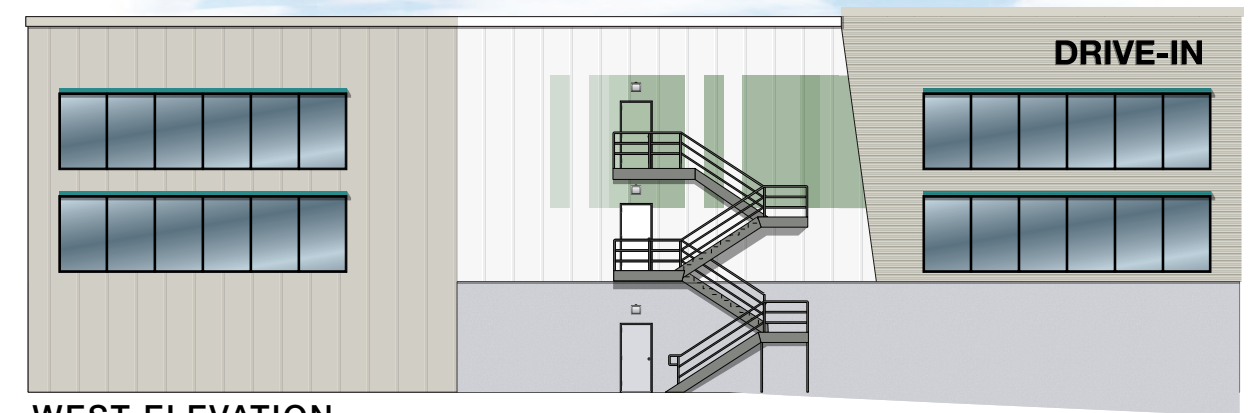
SOUTH ELEVATION

Scale: 1/20" = 1'



EAST ELEVATION

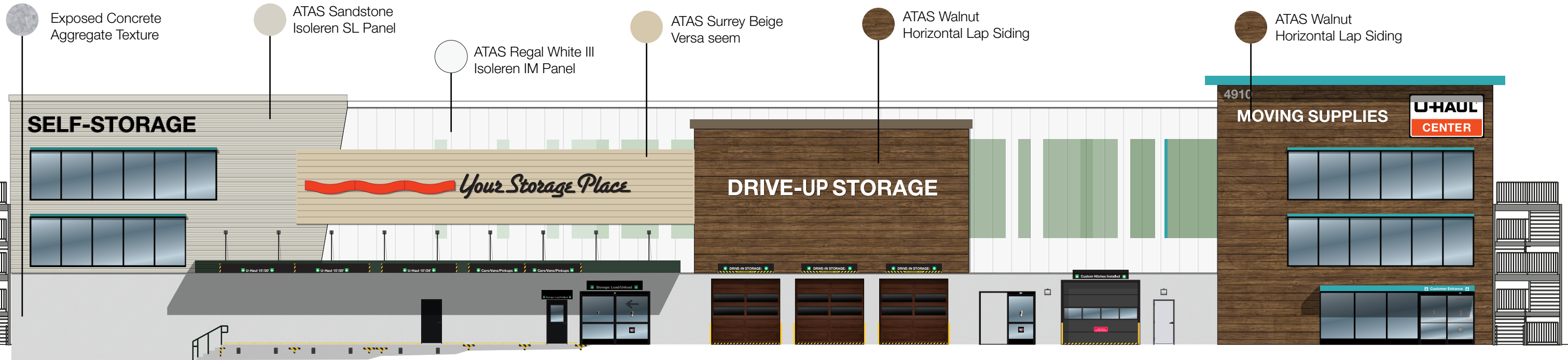
Scale: 1/20" = 1'



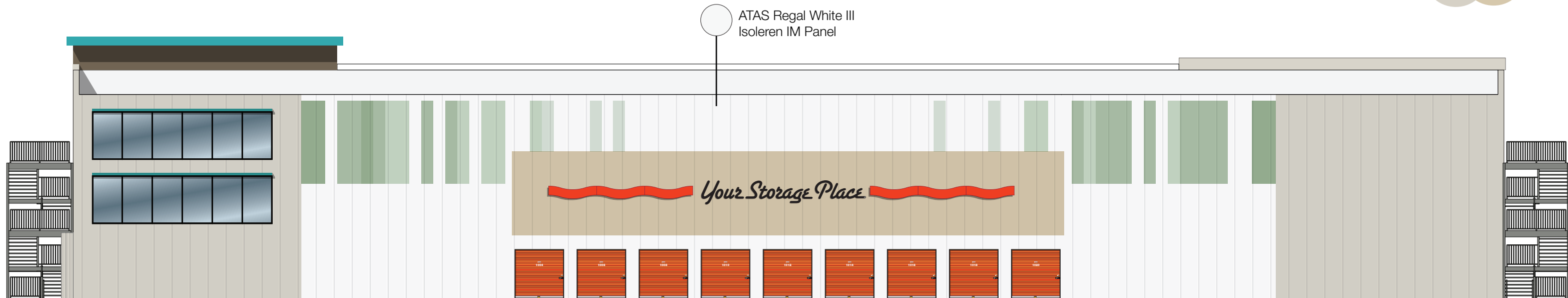
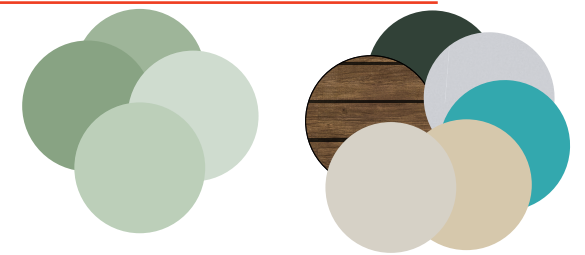
WEST ELEVATION

Scale: 1/20" = 1'

MOVING & STORAGE AT OZARK

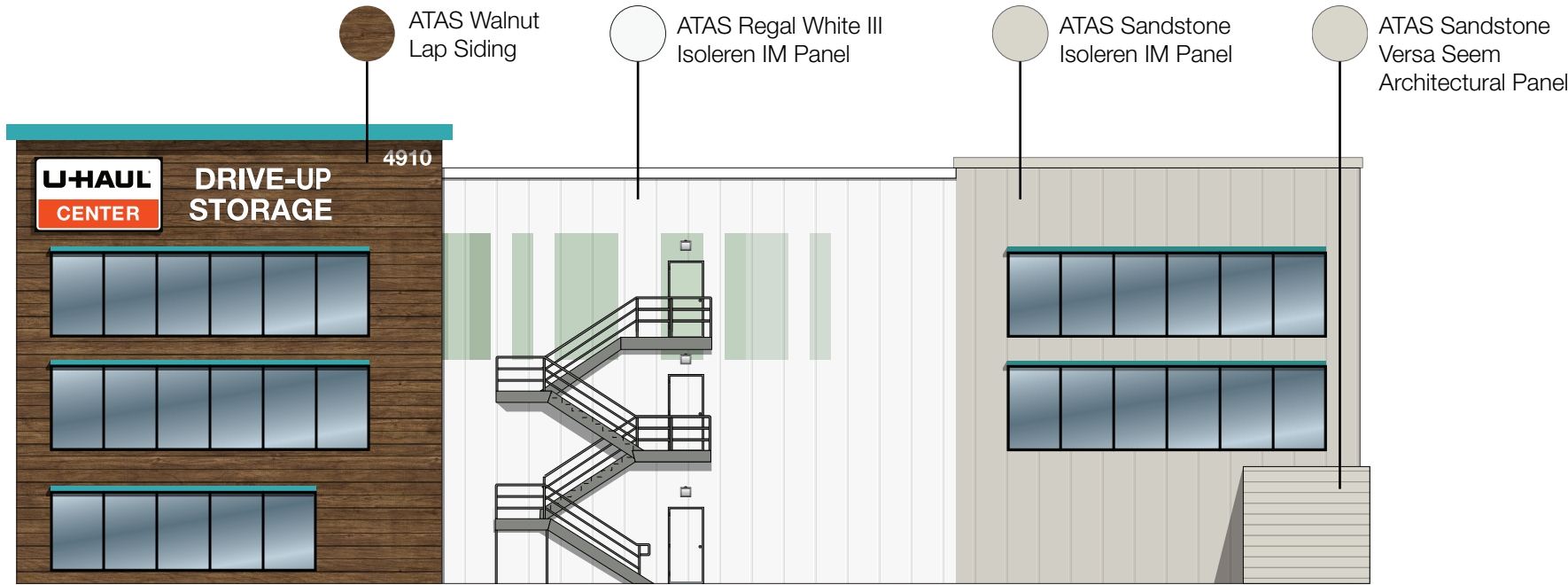


NORTH ELEVATION



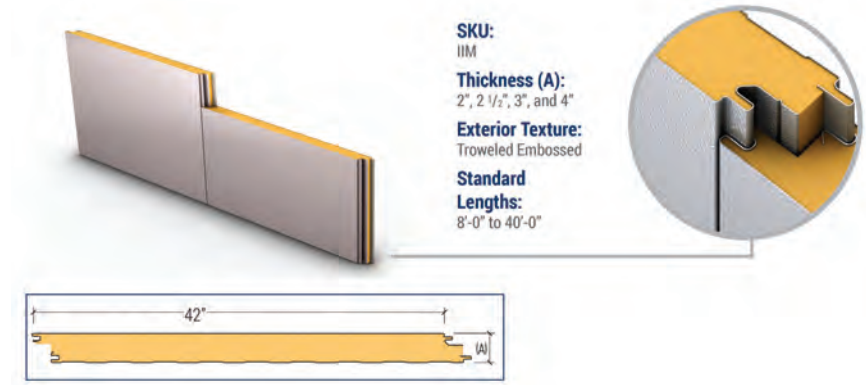
SOUTH ELEVATION

U-HAUL
MOVING & STORAGE AT OZARK

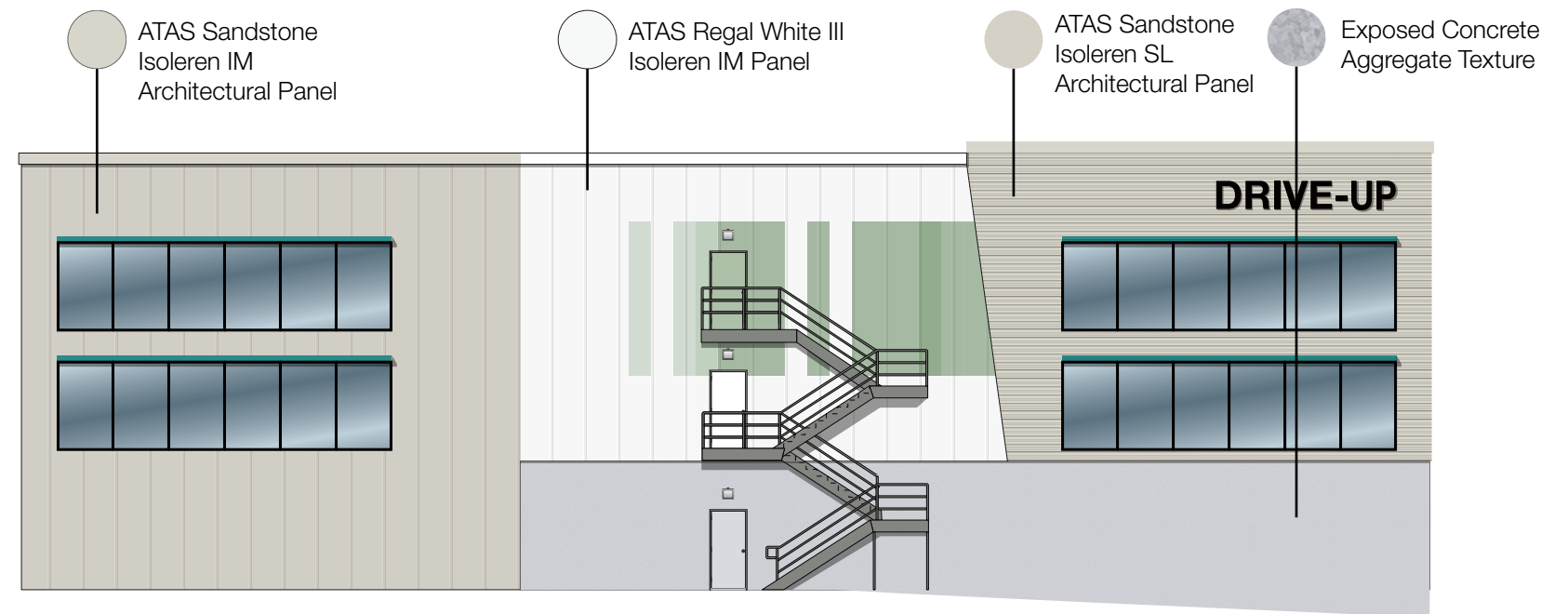
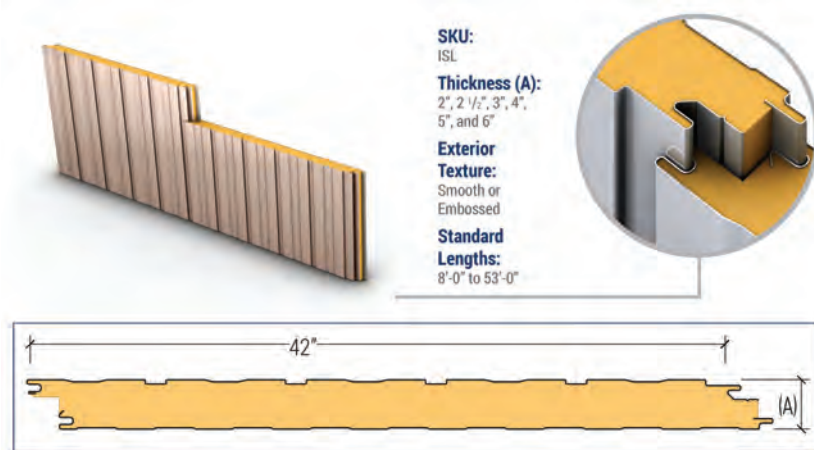


EAST ELEVATION

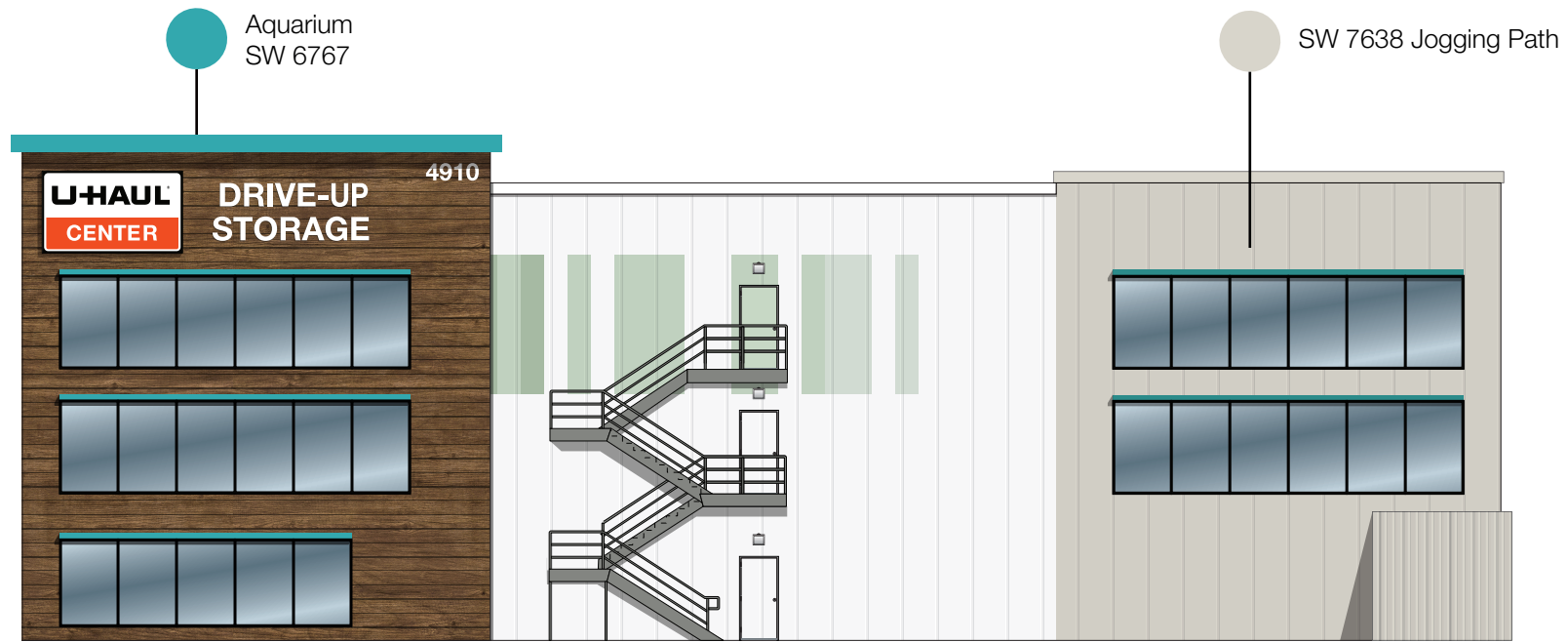
Isoleren IM



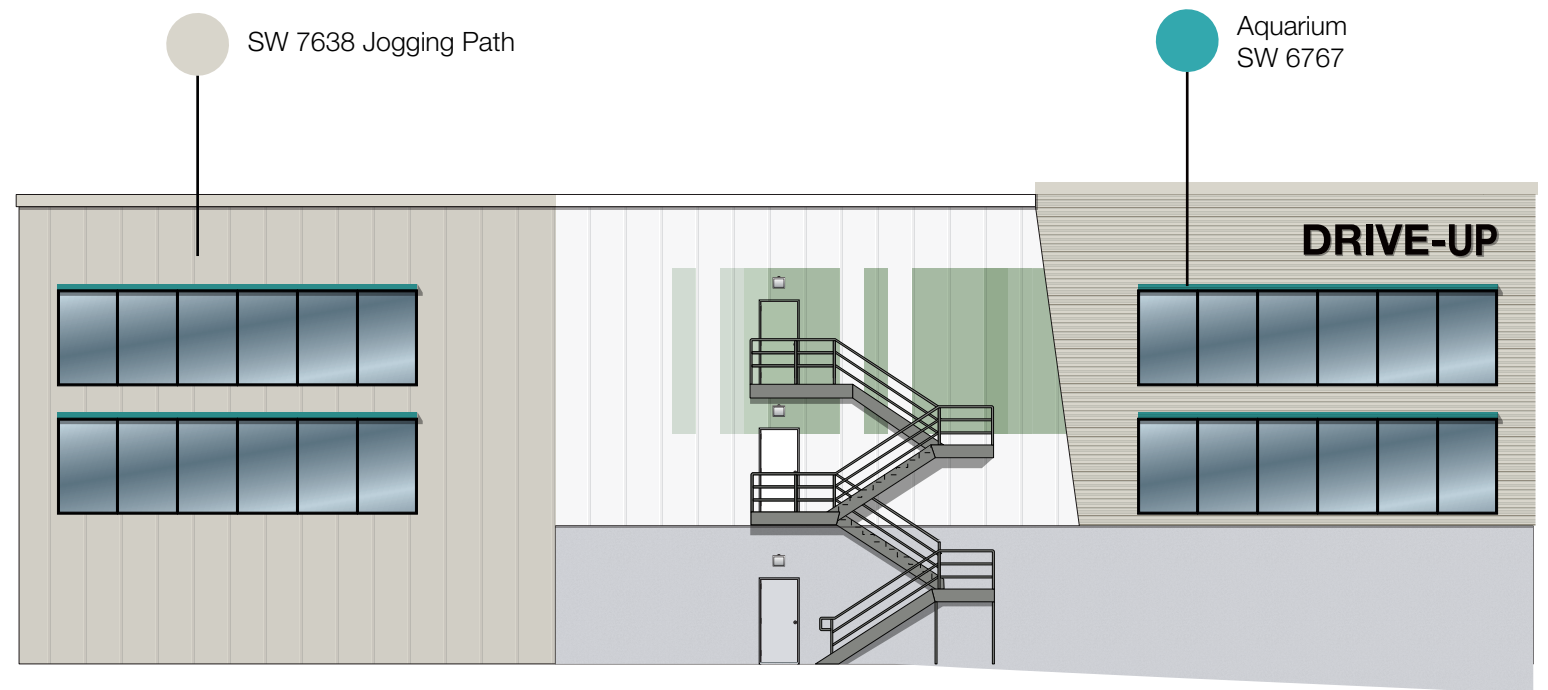
Isoleren SL



WEST ELEVATION



EAST ELEVATION

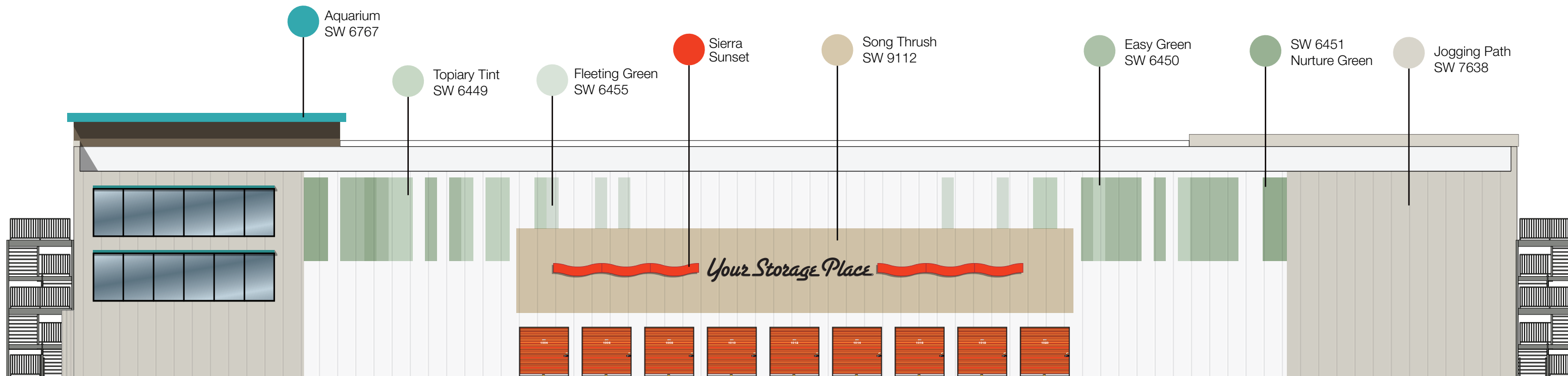


WEST ELEVATION

MOVING & STORAGE AT OZARK

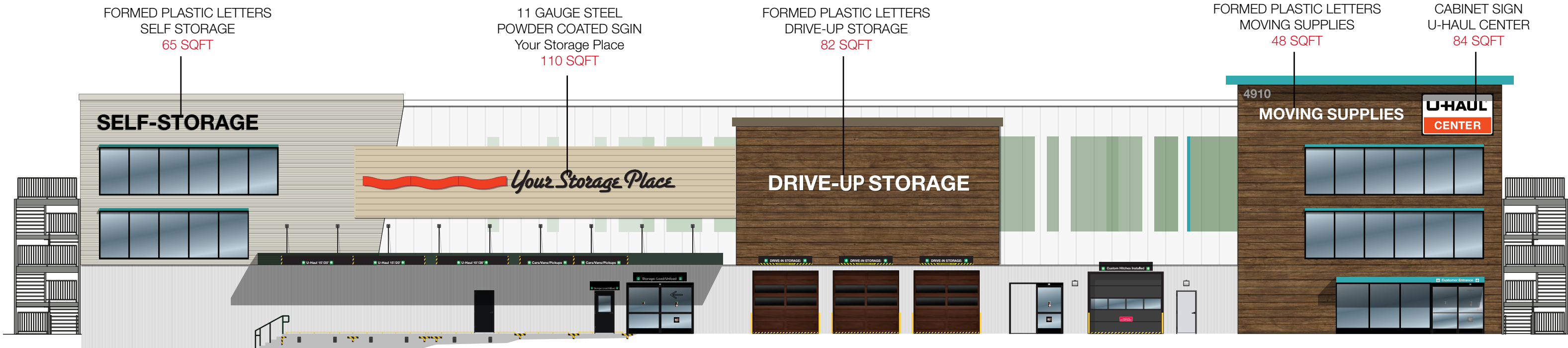


NORTH ELEVATION

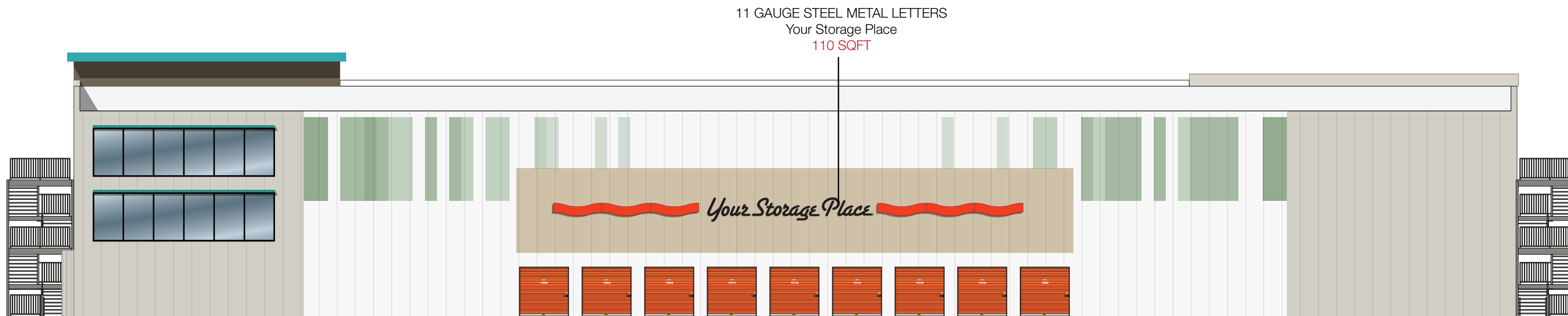


SOUTH ELEVATION

MOVING & STORAGE AT OZARK



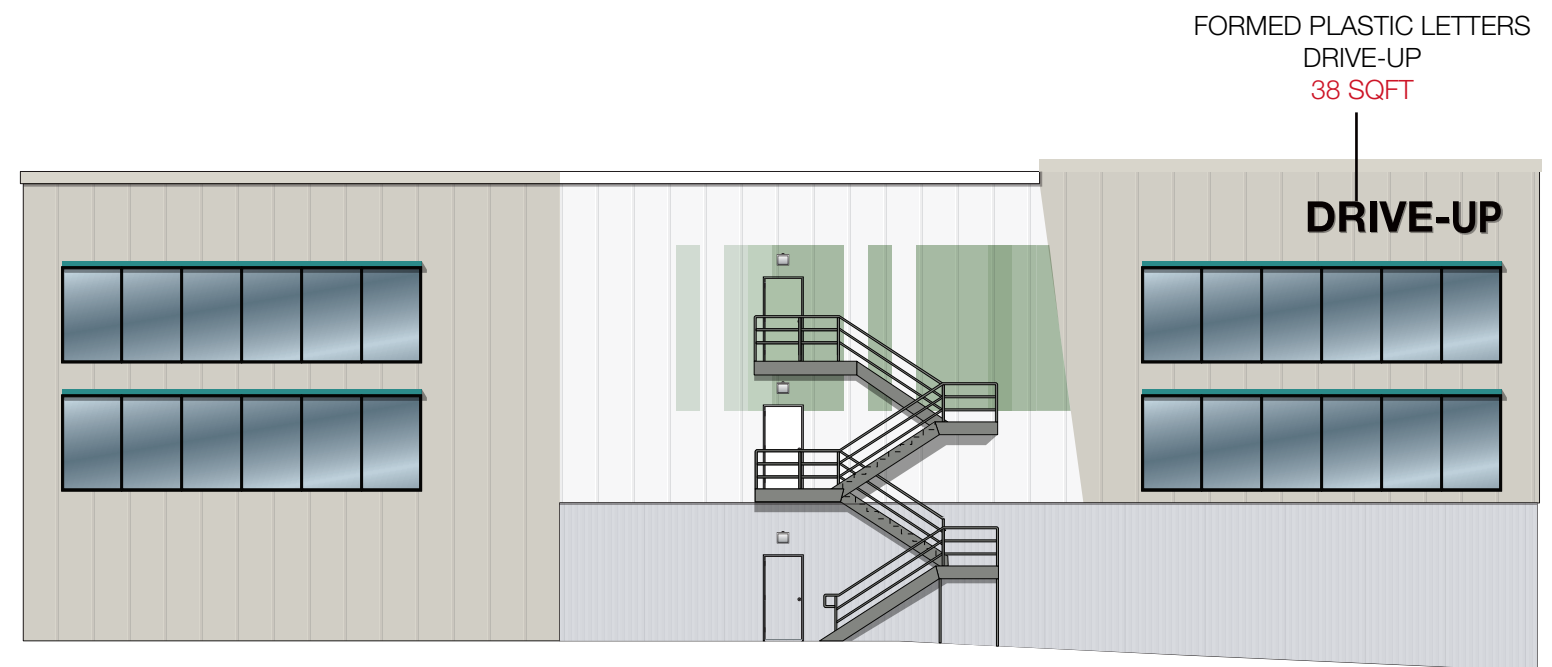
NORTH ELEVATION



SOUTH ELEVATION



EAST ELEVATION



WEST ELEVATION