



Case # 91-2024 - 1407 Cinnamon Hill Lane Major PD Plan Revision & SOI Amendment



Parcel Data Source: Boone County Assessor

Created by The City of Columbia - Community Development Department

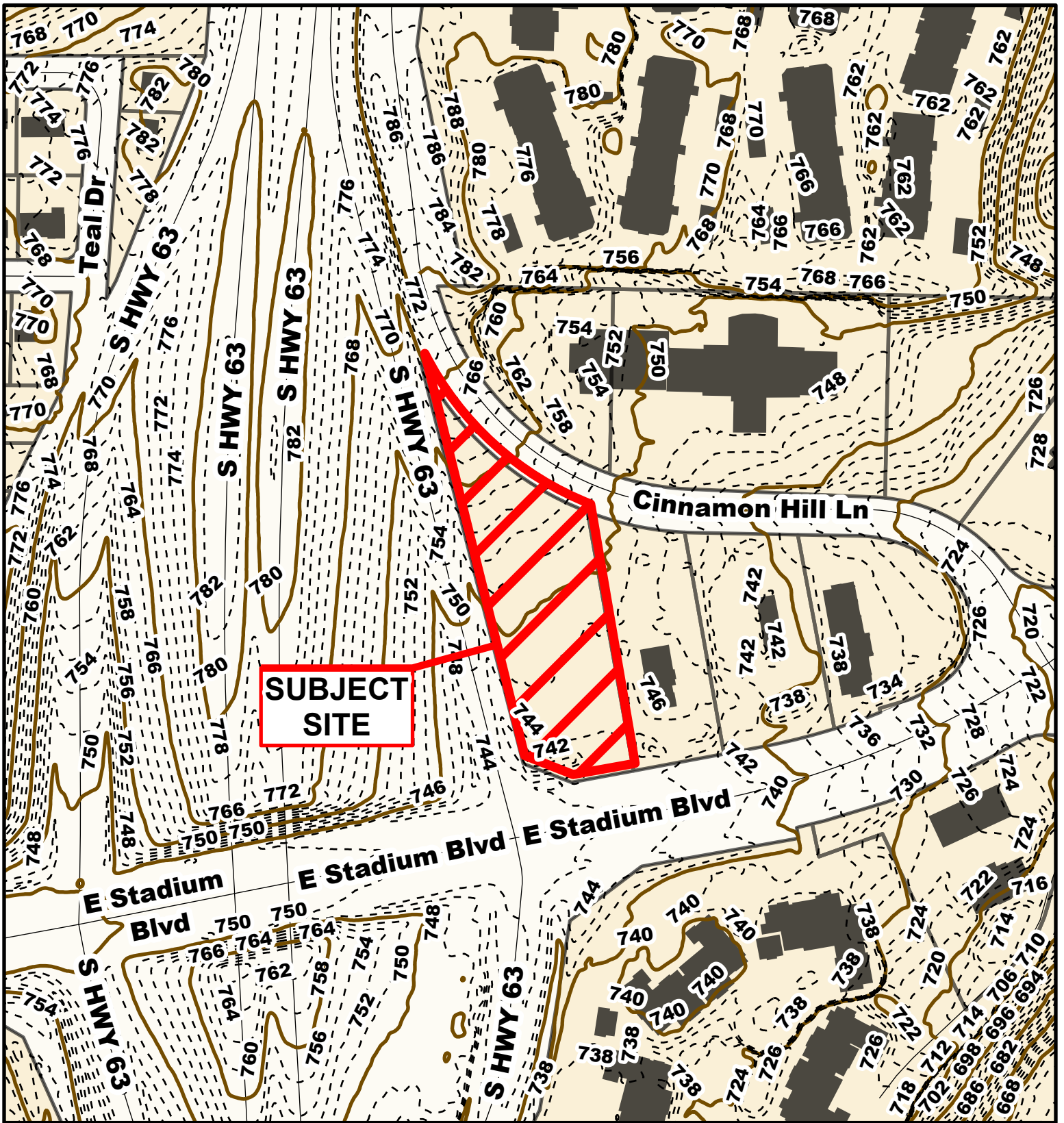
 City Zoning  Parcels

2022 Imagery: NearMap

0 175 350 Feet

N



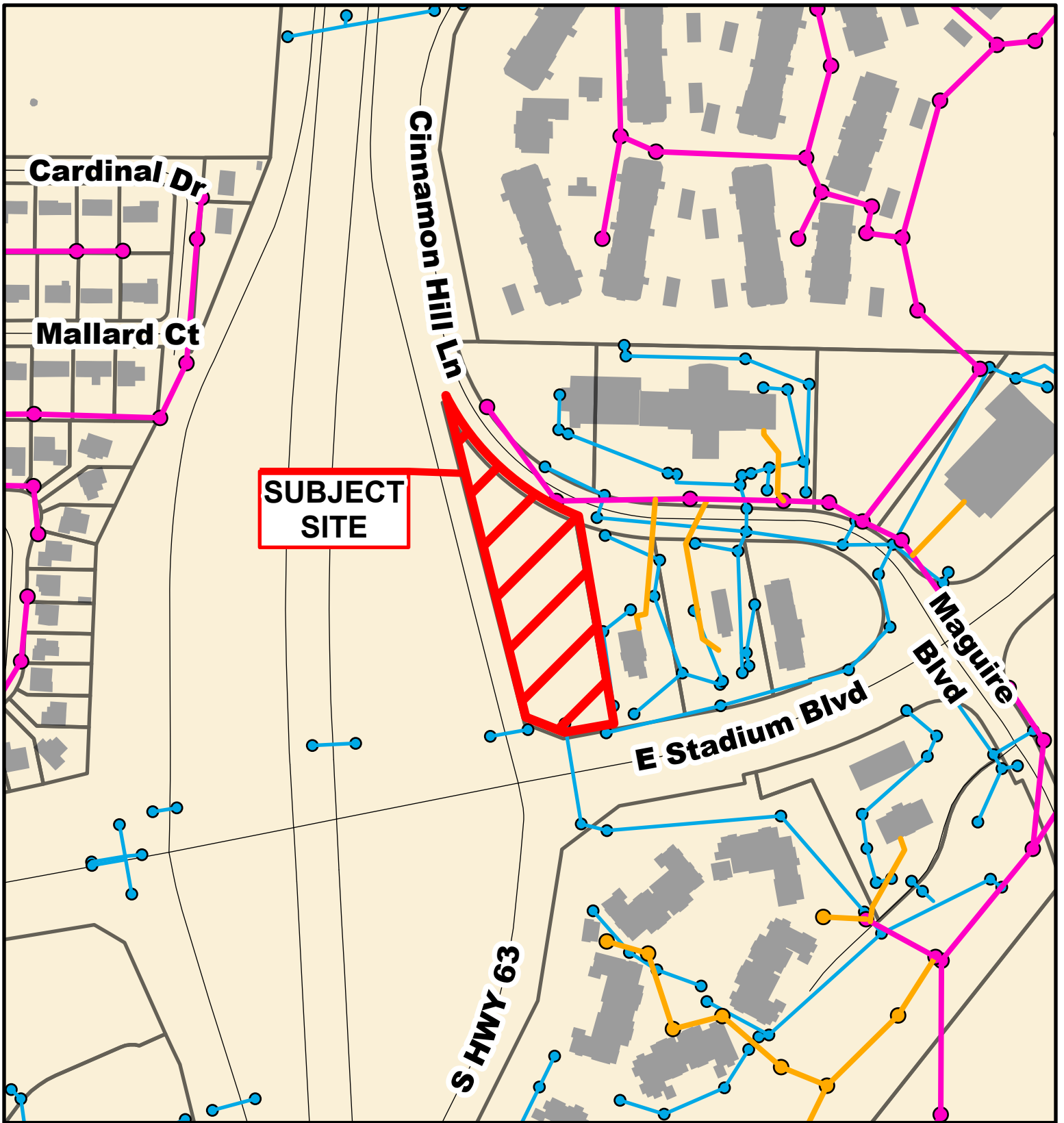


Case # 91-2024 - 1407 Cinnamon Hill Lane Major PD Plan Revision & SOI Amendment



- 10 Foot Contour Lines
- 2 Foot Contour Lines
- Parcels





Case # 91-2024 - 1407 Cinnamon Hill Lane Major PD Plan Revision & SOI Amendment



- City Sanitary Line
- City Storm Lines
- Private Sanitary Line
- Parcels

