

BAR SIZE	NOMINAL DIAMETER (IN.)	MINIMUM ALLOWABLE DIAMETER (IN.)
#3	0.375	0.325
#4	0.500	0.433
#5	0.625	0.541
#6	0.750	0.650
#7	0.875	0.758
#8	1.000	0.866
#9	1.128	0.977
#10	1.270	1.100

REINFORCING BAR DIAMETER TABLE

CONCRETE REPAIR NOTES

- REMOVE ALL LOOSE AND DETERIORATED CONCRETE. CHIP OUT AND PATCH AREA 1/2" MIN. BEYOND SPALLED SURFACE. AT BOUNDARIES OF DETERIORATED CONCRETE, SAWCUT BOUNDARY TO A MINIMUM DEPTH OF 3/4". DO NOT FEATHER EDGES.
- CARE SHOULD BE EXERCISED NOT TO DAMAGE EXISTING REINFORCING STEEL DURING CONCRETE REMOVAL. CONCRETE REMOVAL SHALL EXTEND TO WHERE BAR IS WELL BONDED TO SURROUNDING SOUND CONCRETE. CARE SHALL BE EXERCISED NOT TO DAMAGE THE BAR'S BOND TO SURROUNDING CONCRETE. IF BOND BETWEEN BAR AND CONCRETE IS BROKEN, UNDERCUTTING OF THE BAR IS REQUIRED AS SPECIFIED IN ITEM 4 BELOW.
- IF HALF OF THE THICKNESS OF THE REINFORCEMENT BAR OR MORE IS EXPOSED PROVIDE A MINIMUM OF 1/2" CLEARANCE BETWEEN EXPOSED REINFORCEMENT AND SURROUNDING CONCRETE FOR HAND APPLIED REPAIR MATERIALS AND A MINIMUM OF 1" CLEARANCE FOR SPRAY APPLIED REPAIR MATERIALS.
- MECHANICALLY CLEAN STEEL BY SANDBLASTING OR WIRE BRUSH TO WHITE METAL CONDITION TO REMOVE CORROSION. AFTER CLEANING REINFORCING STEEL, MEASURE DIAMETER AT NARROWEST POINT. IF SECTION LOSS IS GREATER THAN 25% (SEE "REINFORCING BAR DIAMETER TABLE" ON THIS SHEET) ADD NEW REINFORCING BAR MATCHING SIZE OF EXISTING. MAINTAIN A MINIMUM OF 1/2" CONCRETE COVER AT ALL NEW AND EXISTING REINFORCEMENT, ANY REINFORCEMENT TO BE DRILLED AND GROUTED INTO EXISTING CONCRETE SHALL USE HILTI HIT HY 200 MAX EPOXY ADHESIVE (OR APPROVED EQUAL).
- APPLY CONCRETE PRIMER TO SUBSTRATE PER MANUFACTURERS SPECIFICATIONS. APPLY TWO COATS OF ANTI-CORROSION COATING PER MANUFACTURERS SPECIFICATIONS TO ALL EXPOSED REINFORCEMENT ALLOWING TO PROPERLY DRY BETWEEN COATS. SIKAFERROGARD 901 OR APPROVED EQUAL.
- WHILE CONCRETE PRIMER IS STILL WET, APPLY PATCH MATERIAL PER MANUFACTURERS SPECIFICATIONS. FOR APPLICATIONS GREATER THAN 1" IN DEPTH, APPLY PATCH MATERIAL IN LIFTS. SCORE THE TOP SURFACE OF EACH LIFT AND ALLOW EACH LIFT TO REACH FINAL SET THEN REPEAT FROM STEP 8.
- PROVIDE MECHANICAL SPLICE CAPABLE OF DEVELOPING 125% F_y. MAINTAIN A MINIMUM OF 1/2" CONCRETE COVER AT ALL NEW AND EXISTING REINFORCEMENT.

SPECIAL INSPECTIONS

- THE FOLLOWING ITEMS REQUIRE SPECIAL INSPECTION IN ACCORDANCE WITH CHAPTER 17 OF THE INTERNATIONAL BUILDING CODE.
- CONCRETE GROUT DESIGN MIX (PERIODIC)
 - PLACING OF CONCRETE AND REINFORCING STEEL (CONTINUOUS OF CONCRETE SAMPLING / PERIODIC OF REINFORCING)
 - HELICAL PIERS (PERIODIC)
- THE CONTRACTOR SHALL REQUEST SPECIAL INSPECTION OF THE ITEMS LISTED ABOVE PRIOR TO THOSE ITEMS BECOMING INACCESSIBLE AND UNOBSERVABLE DUE TO PROGRESSION OF THE WORK.

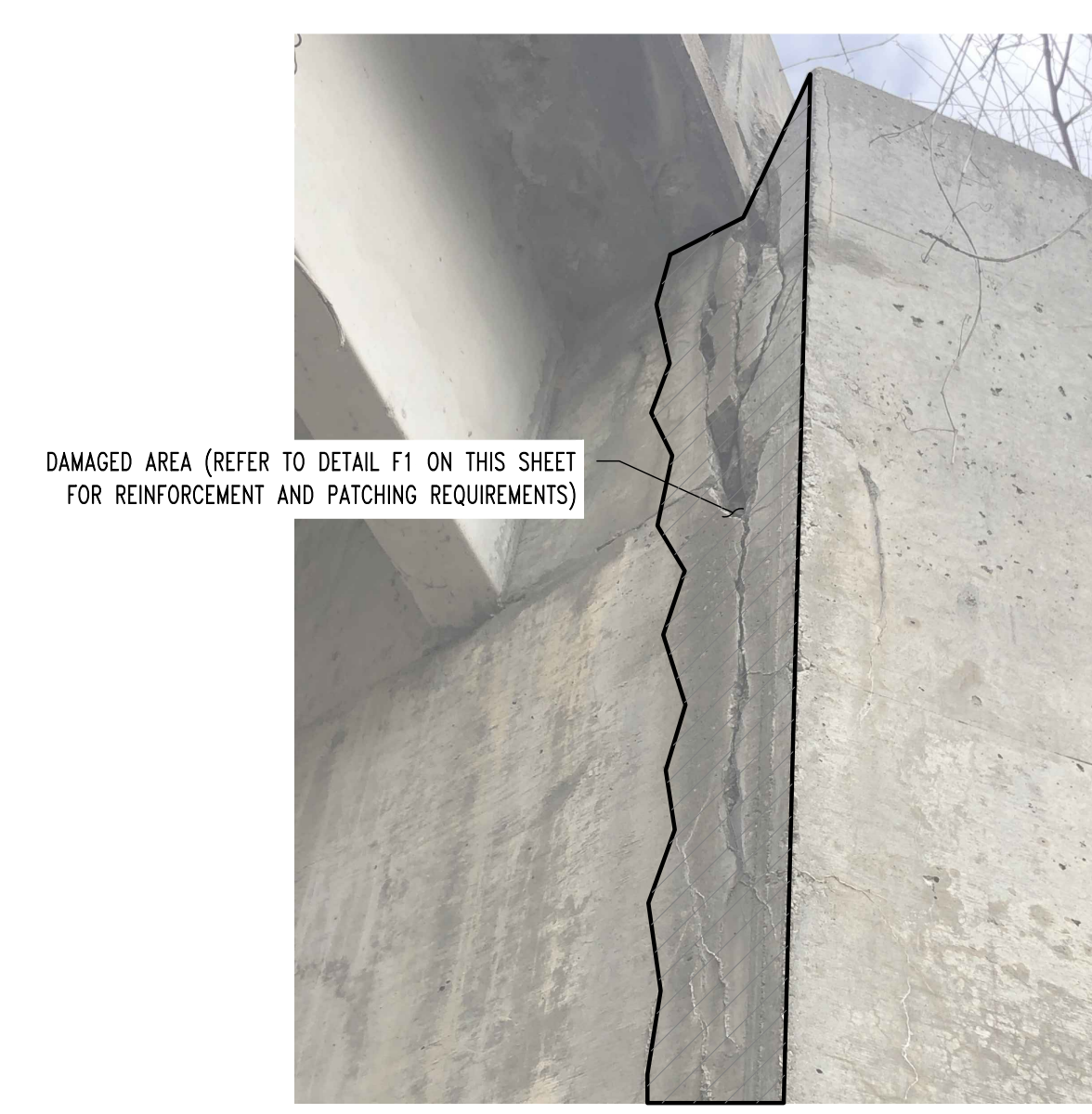


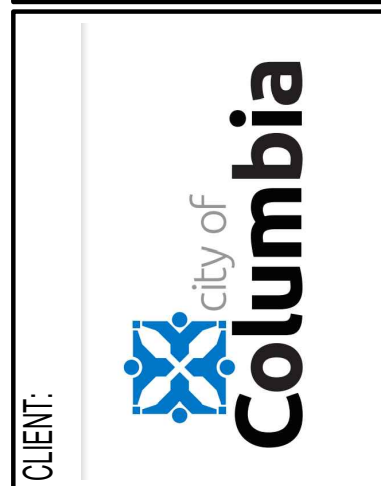
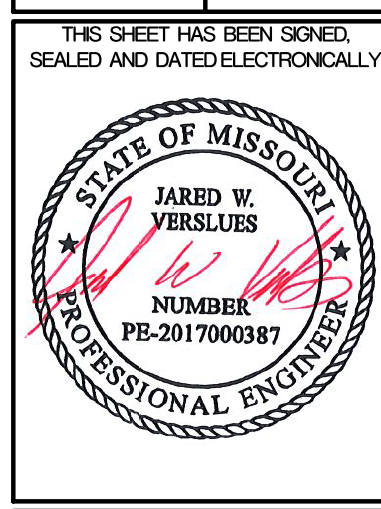
PHOTO #1



PHOTO #2

REVISIONS:

No.	Date
CONSTRUCTION	05/14/2020



East Walnut Street Bridge Repair

COLUMBIA, BOONE COUNTY, MISSOURI

DRAWING INCLUDES:

PLAN & DETAILS

DESIGNED: JWV
DRAWN: RCA
PROJECT NO.: 200091
SHEET: S100