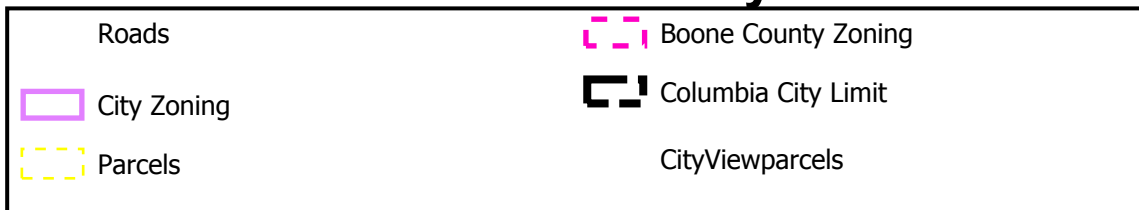


## #17-100: The Vineyards Preliminary Plat #3 Revised Preliminary Plat

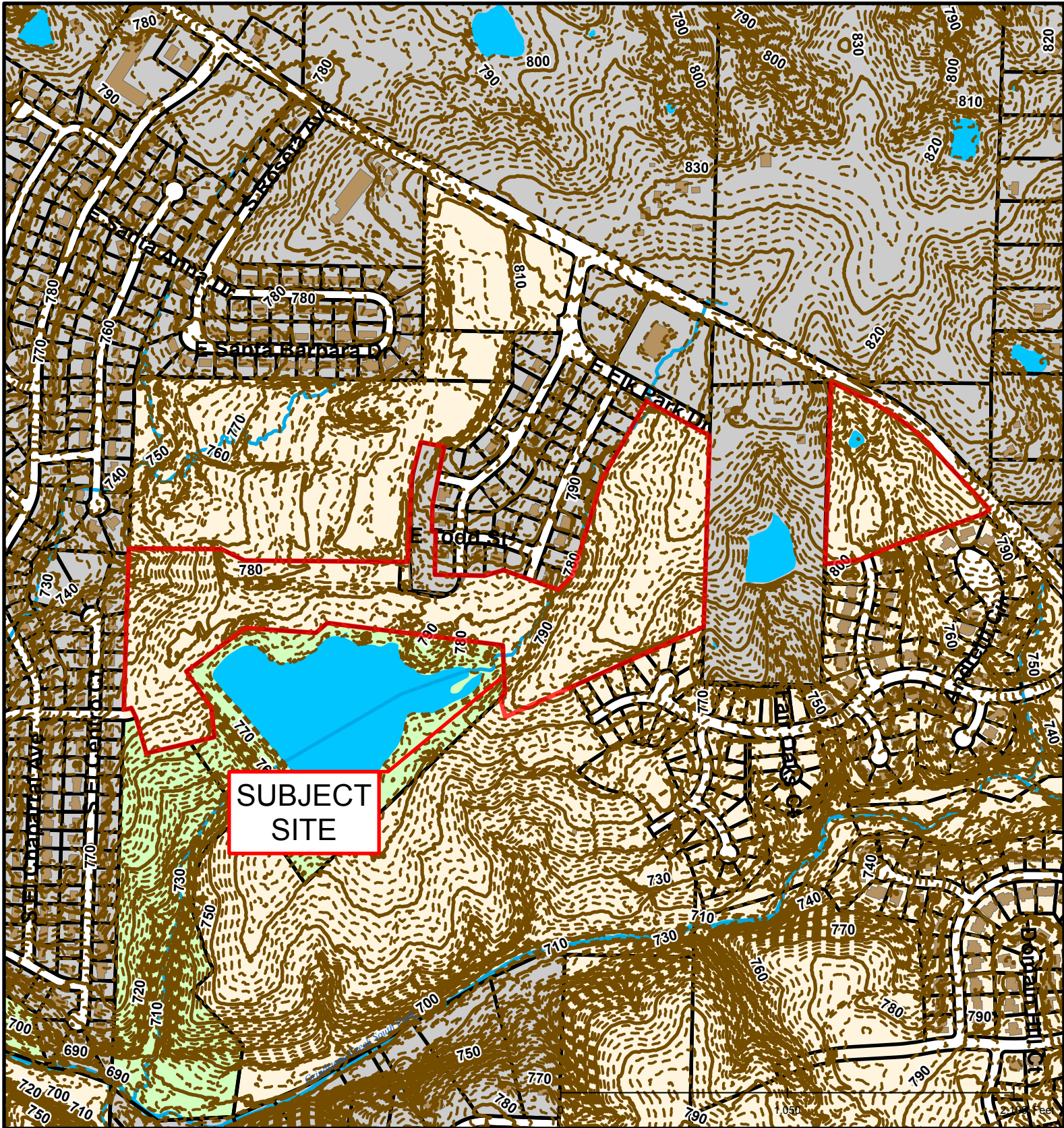


Created by The City of Columbia - Community Development Department

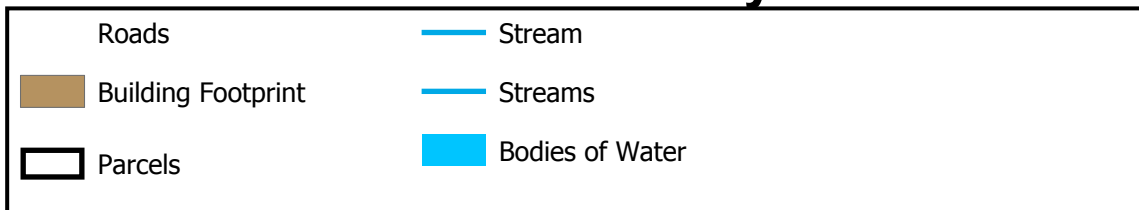
Parcel Data Source: Boone County Assessor

2015 Imagery: Boone County Assessor's Office

Hillshade Data: Boone County GIS Office



## #17-100: The Vineyards Preliminary Plat #3 Revised Preliminary Plat

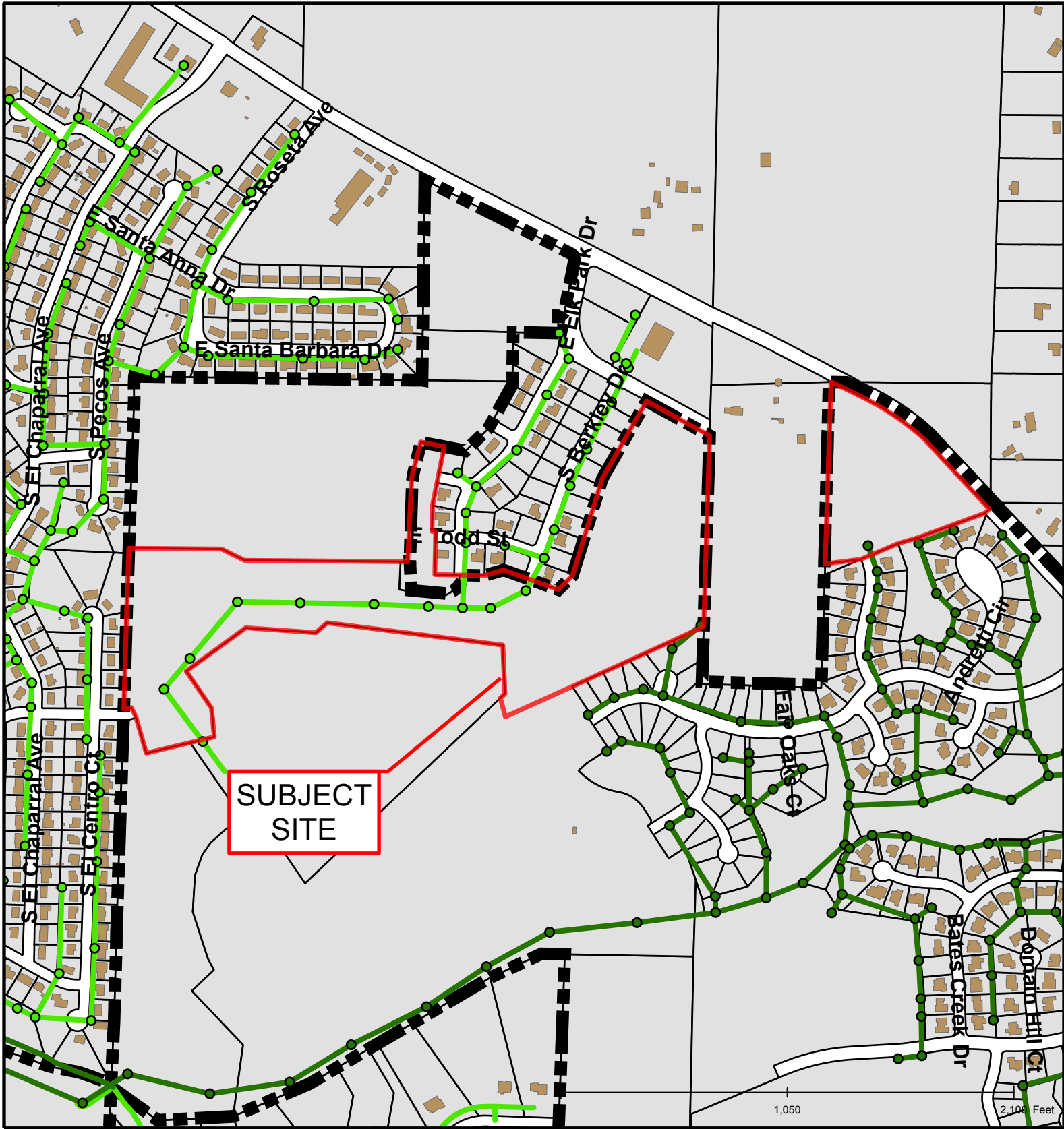


Created by The City of Columbia - Community Development Department

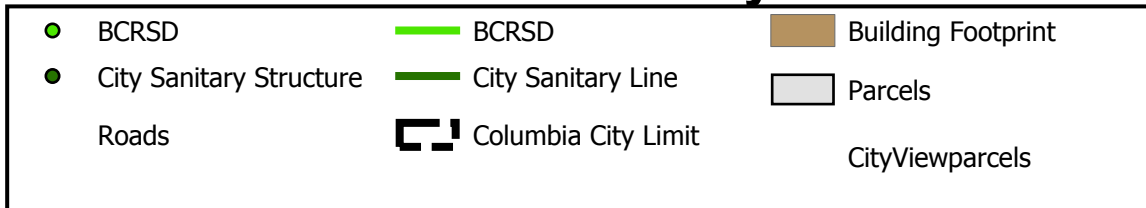
Parcel Data Source: Boone County Assessor

2015 Imagery: Boone County Assessor's Office

Hillshade Data: Boone County GIS Office



## #17-100: The Vineyards Preliminary Plat #3 Revised Preliminary Plat



Created by The City of Columbia - Community Development Department

Parcel Data Source: Boone County Assessor

2015 Imagery: Boone County Assessor's Office

Hillshade Data: Boone County GIS Office