

**Case # 140-2023 - 3612 Oakland Gravel Road**  
**Preliminary Plat**



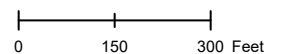
City Zoning    Parcels

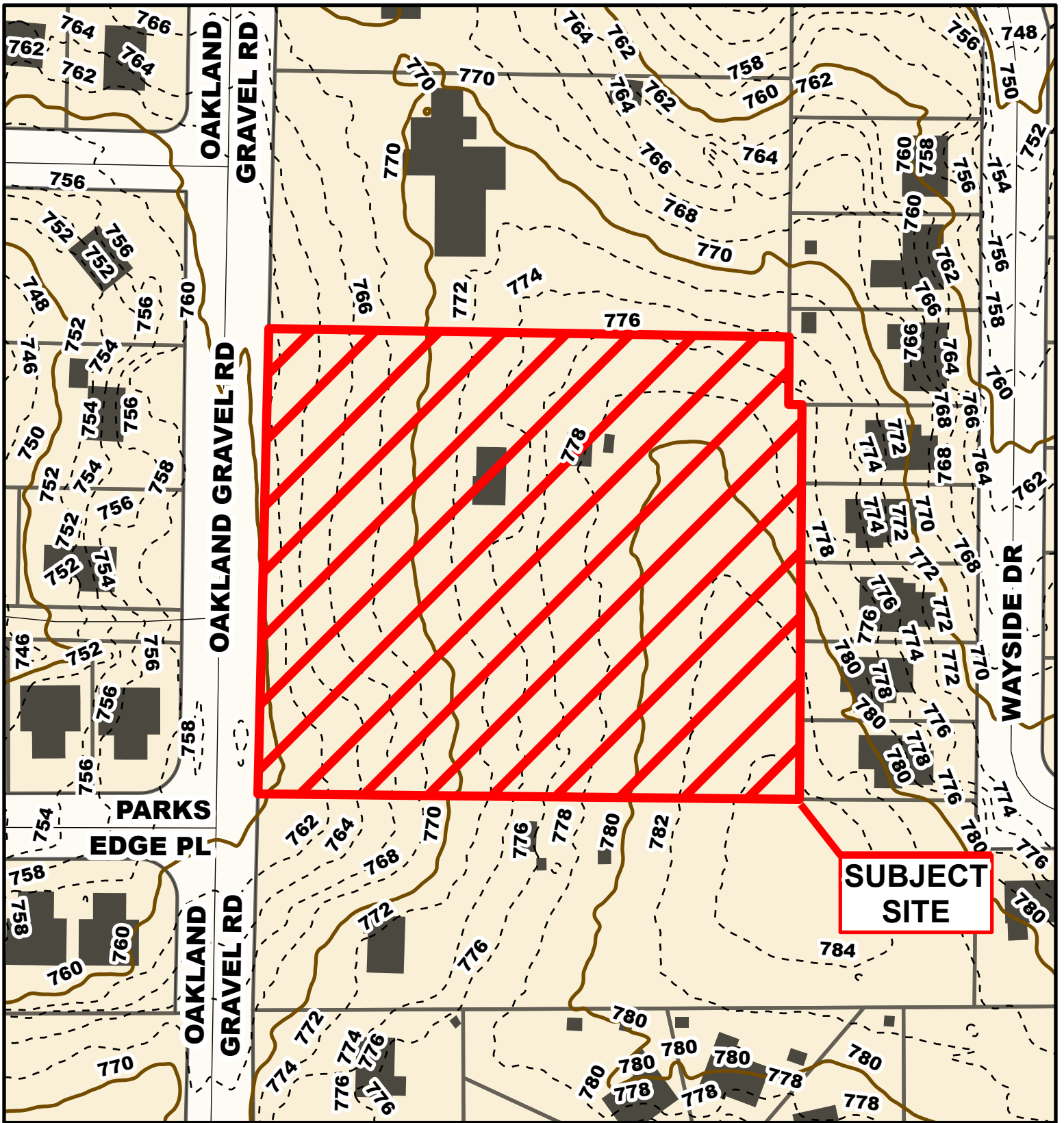


Parcel Data Source: Boone County Assessor

Created by The City of Columbia - Community Development Department

2022 Imagery: NearMap





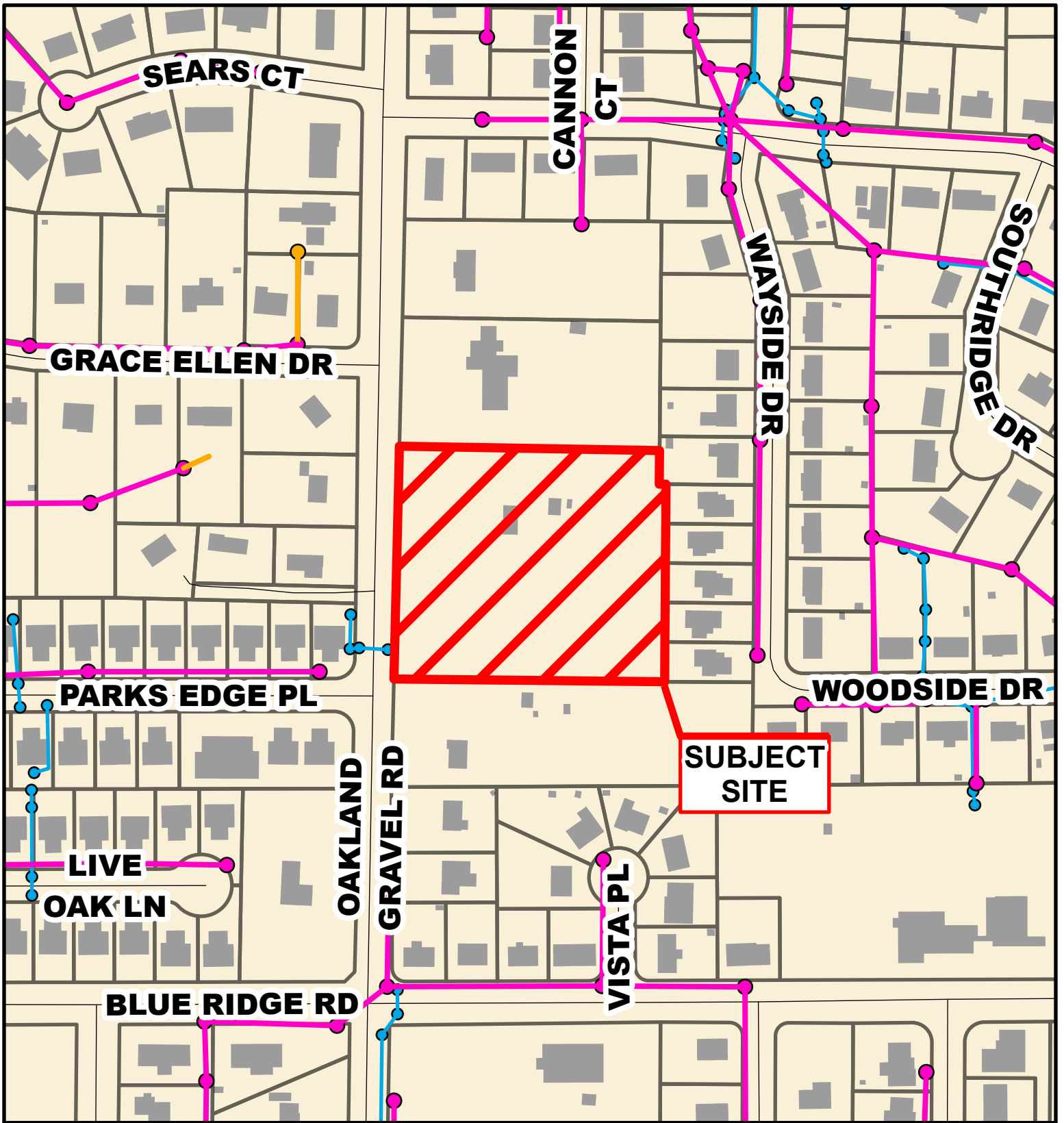
## Case # 140-2023 - 3612 Oakland Gravel Road

### Preliminary Plat



- 10 Foot Contour Lines
- 2 Foot Contour Lines
- City of Columbia
- Parcels





**Case # 140-2023 - 3612 Oakland Gravel Road**

**Preliminary Plat**



- City Sanitary Line
- City Storm Lines
- Private Sanitary Line
- Parcels

