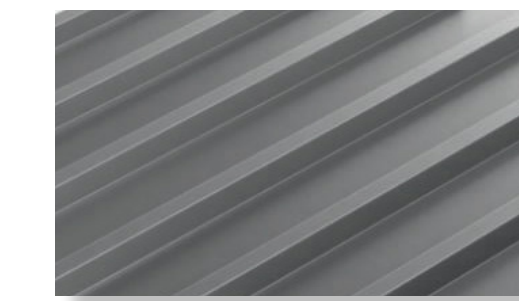


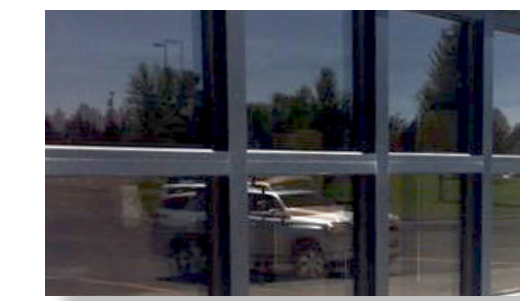




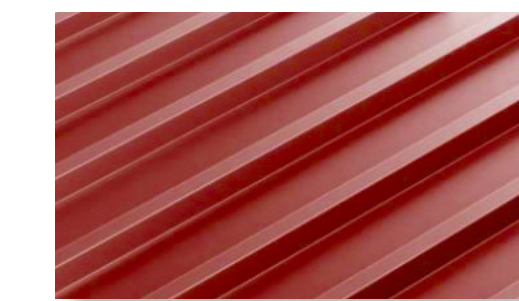
Exterior



Metal Wall Panel at Window Insets & Airside of Building



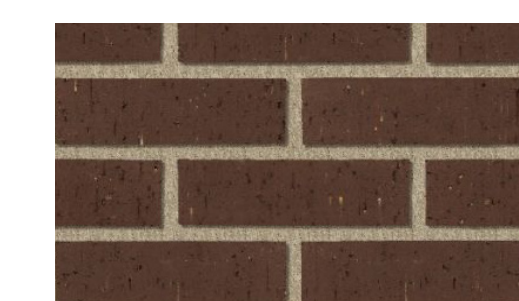
Tinted Storefront Windows



Metal Wall Panel at Entry



Polycarbonate Roofing at Entry Canopies



Field Brick

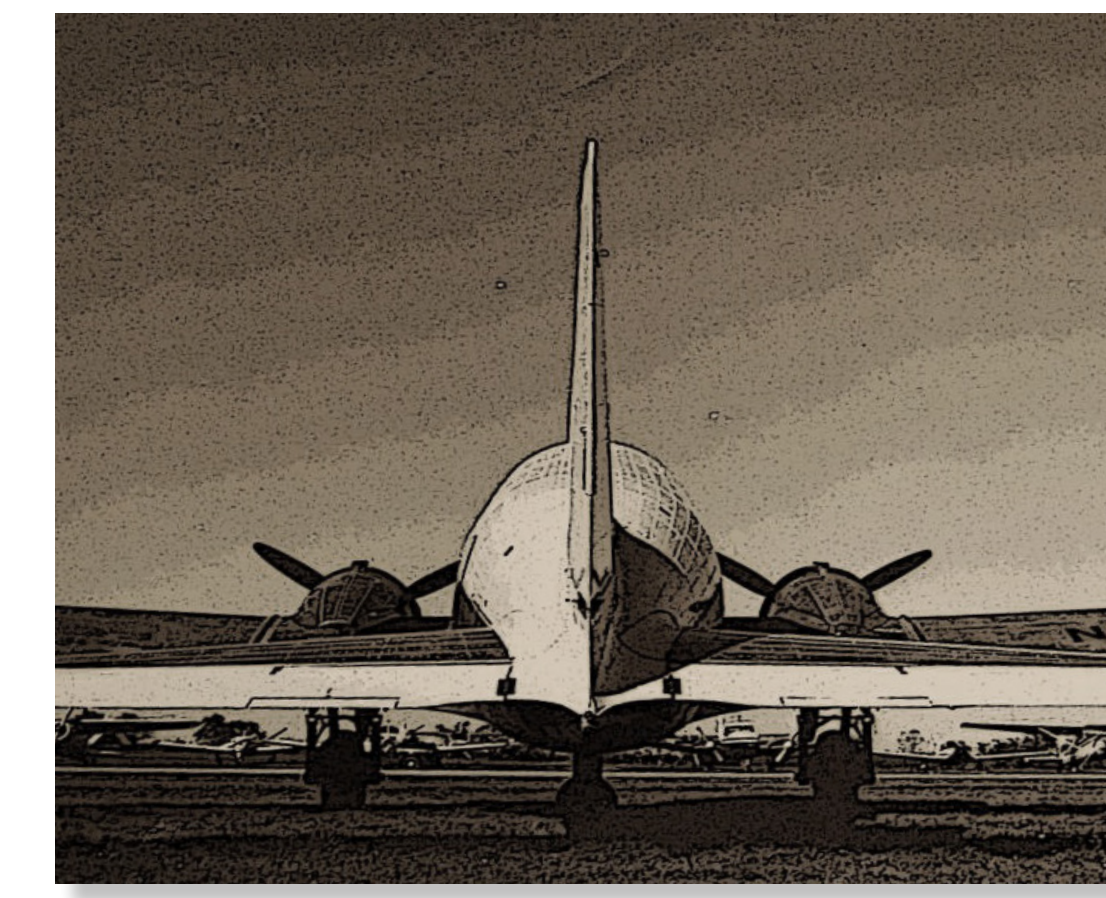


Decorative Brick Soldier Course Edge Banding



Illuminated COU Signage

Interior



Supergraphic Wallcoverings from Historic Memorabilia

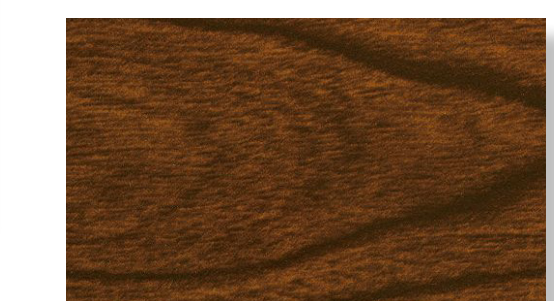
Carpet Tile: Waiting, Baggage, Queuing and Holding Areas==



Accent Colors for Light Fixtures, Paint & Signage



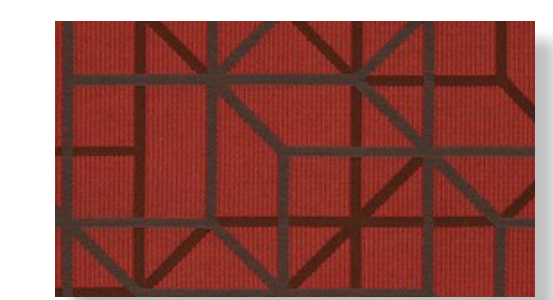
Quartz Countertops



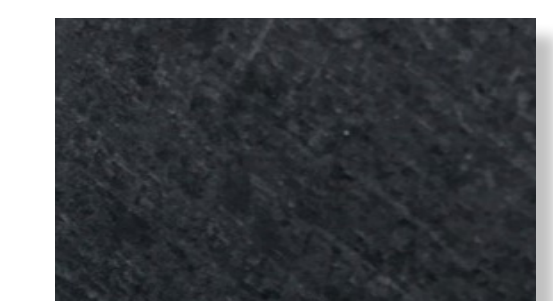
Wood Doors; Wood-Look Ceilings & Furniture



Acoustical Ceiling Tile



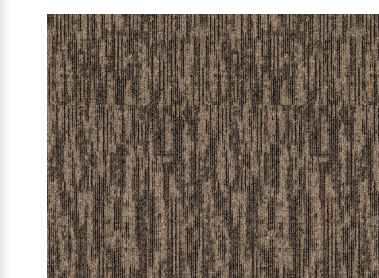
Furniture Upholstery



Large Format Wall Tile



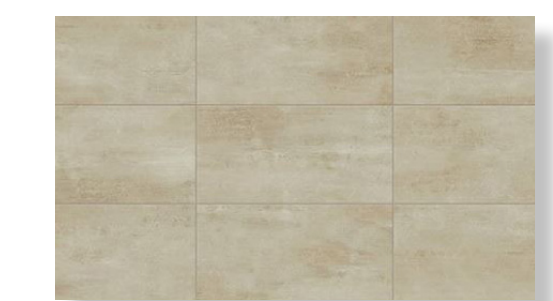
Carpet Tile Pattern



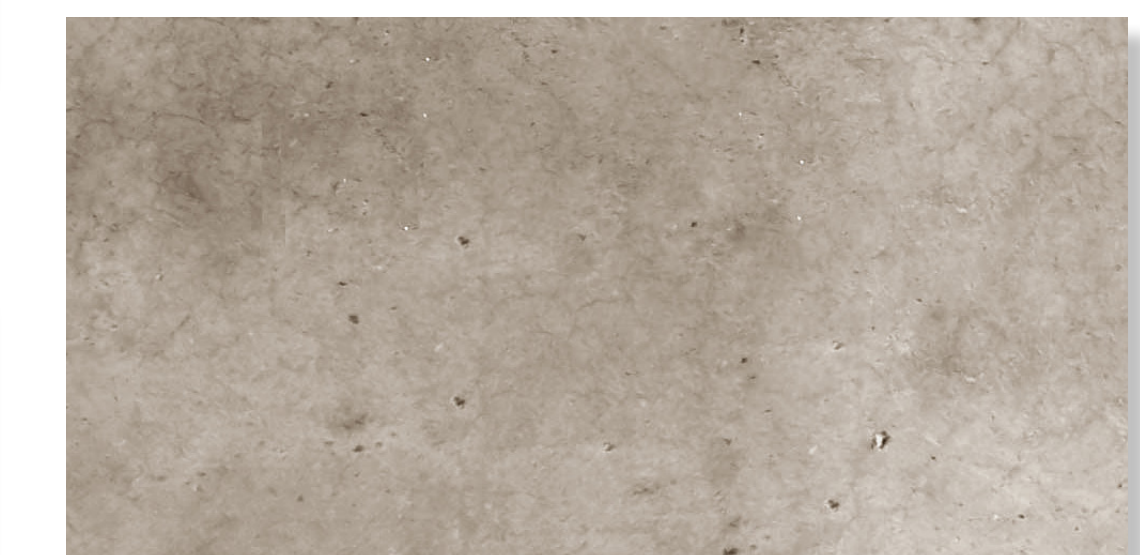
Walk-off Tile Carpet Tile at Vestibules



Porcelain Tile Floors in Restrooms



Porcelain Tile Walls in Restrooms



Sealed Concrete Floors

COU is *your* airport.

Your voice and ideas have inspired a highly efficient and economical solution for Mid-Missouri. By carefully planning, focusing on core needs, and leveraging our experience and creativity, we've created a new terminal design consistent with our region's vision of the future.

LANDSIDE FEATURES

- **Three Drop-off lanes** accommodate multiple types of vehicles/services
- **Prominent and separated entry points** support intuitive wayfinding, decongest passengers
- **Materials/Building Signage** support longstanding brand
- **Covered Connectors protect** access to rental car/auxiliary services
- **Parking increase** by 105 additional stalls
- **Efficient use of existing site grades** minimizes expensive fill

AIRSIDE FEATURES

- **Raised holdroom** affords better views over aircraft/ground service equipment/personnel
- **Raised gates** allow for larger aircraft mix while maintaining full taxiway
- **Ground boarding option** allows irregular operations, additional remain-overnight aircraft parking

TERMINAL FEATURES

- **Compact building footprint** equates to less construction, area to maintain, energy consumption; minimizes carbon footprint
- **Building orientation** maximizes energy efficiency, passive solar gain, ease of constructability
- **Internal arrangement** supports clear traffic flow without multiple crossing of paths; transparency throughout supports ease in locating intended destinations
- **Plan adjacencies based on regional airport best practices** allow for ease of use, reuse of existing terminal with minimal remodel
- **PAL3 accommodates growth for 20 years**, supports passenger demand
- **All-Inclusive Personal Amenities:** Family Restroom, Mother's Room, Service Animal Restroom, Sensory Room
- **Historic Aviation Memorabilia supergraphics** celebrate local history, add interest
- **High FAA AIP eligibility** to offset sponsor financial share