






Case # 87-2026 - 1101 East Nifong Boulevard Easement Vacation



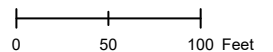
-  City Property
-  Parcels
-  City Zoning

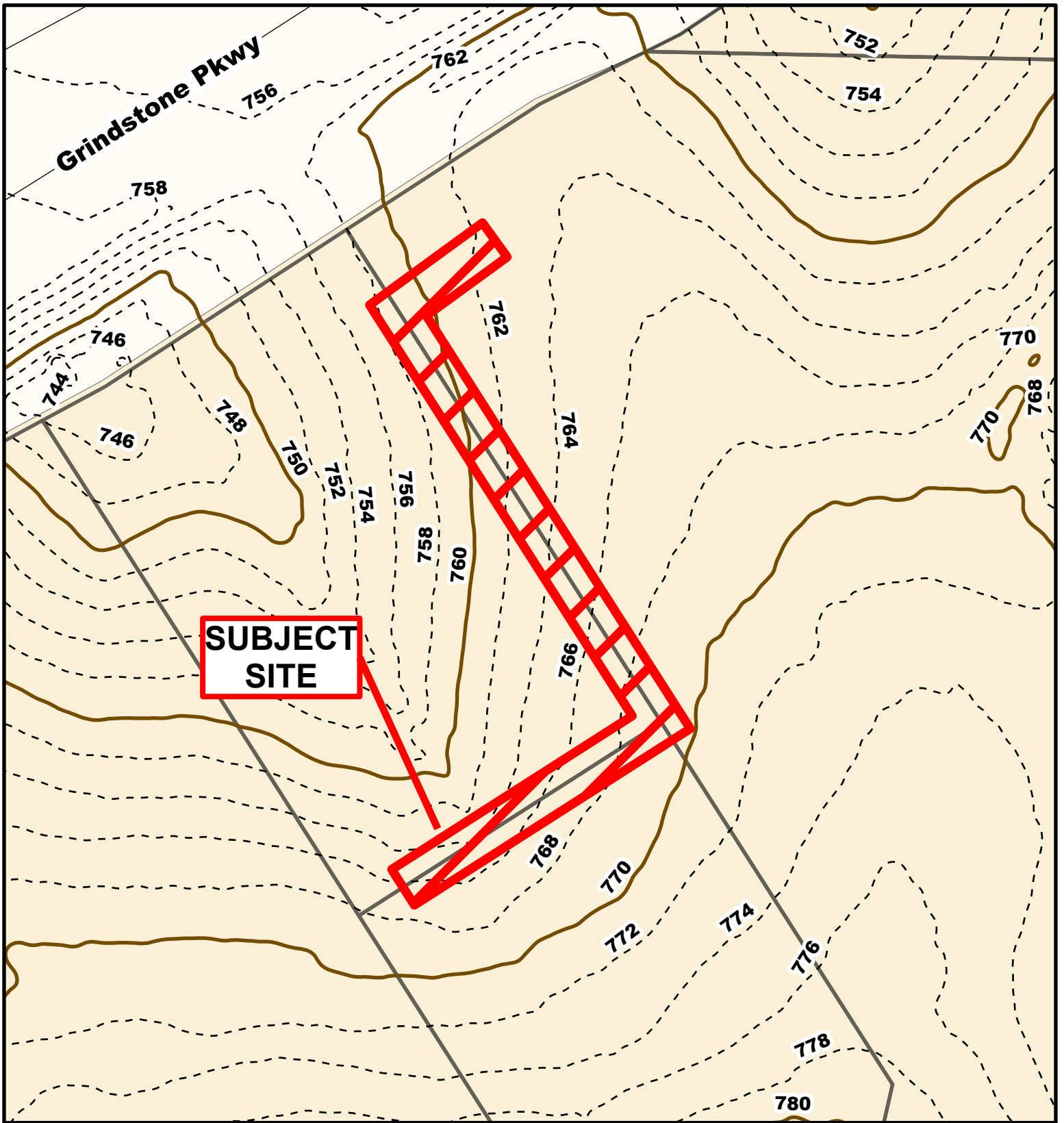


Parcel Data Source: Boone County Assessor

Created by The City of Columbia - Community Development Department

2025 Imagery: NearMap

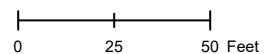


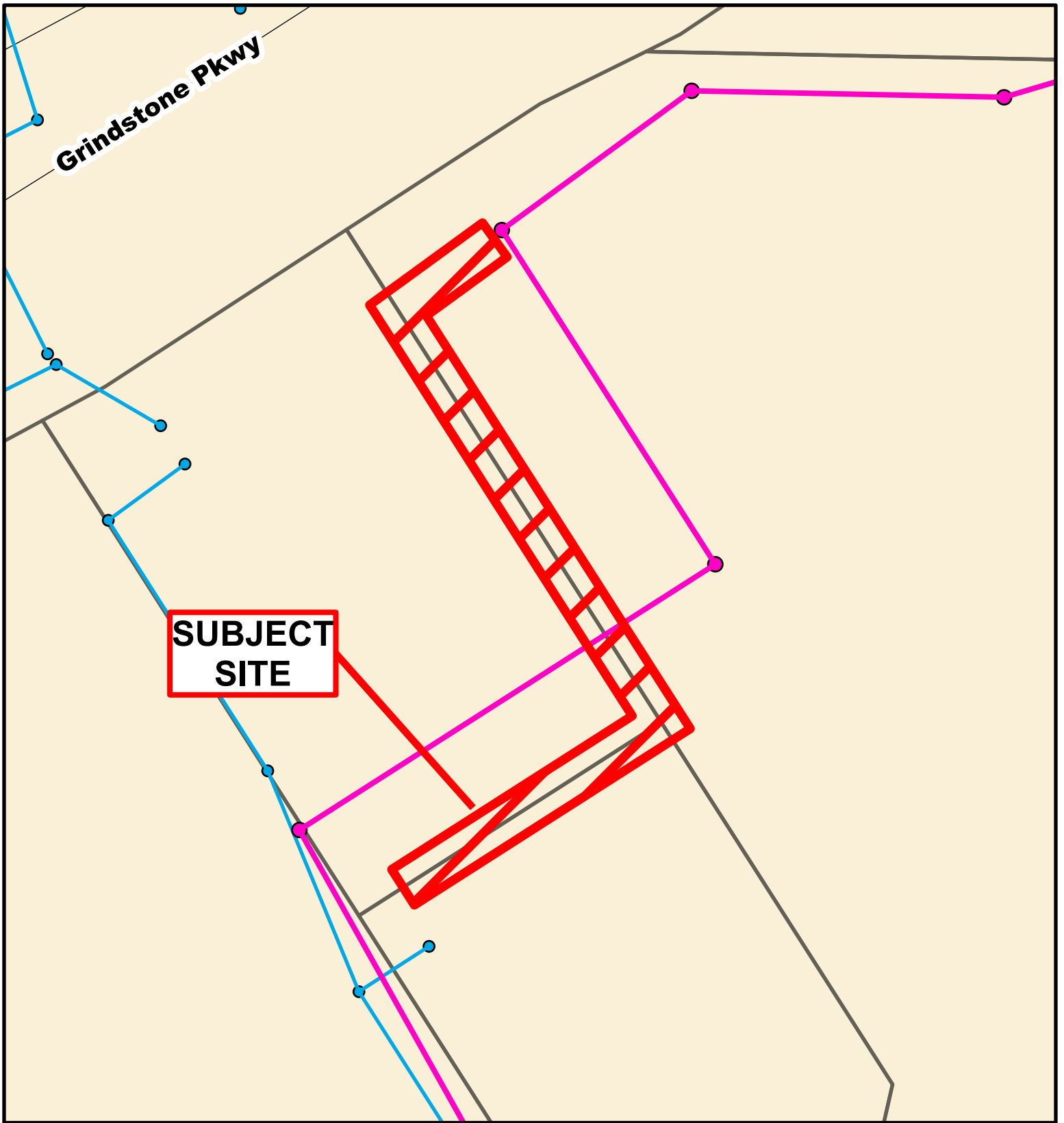


Case # 87-2026 - 1101 East Nifong Boulevard Easement Vacation



- 10 Foot Contour Lines
- - - 2 Foot Contour Lines
- Columbia City Limit
- Parcels





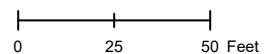
Grindstone Pkwy

SUBJECT SITE

**Case # 87-2026 - 1101 East Nifong Boulevard
Easement Vacation**



- City Sanitary Line
- City Storm Lines
- Parcels
- Columbia City Limit



1101 East Nifong Boulevard Easement Vacation

