


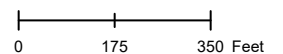


Case # 154-2026 - 2710 Bluff Creek Boulevard Variance

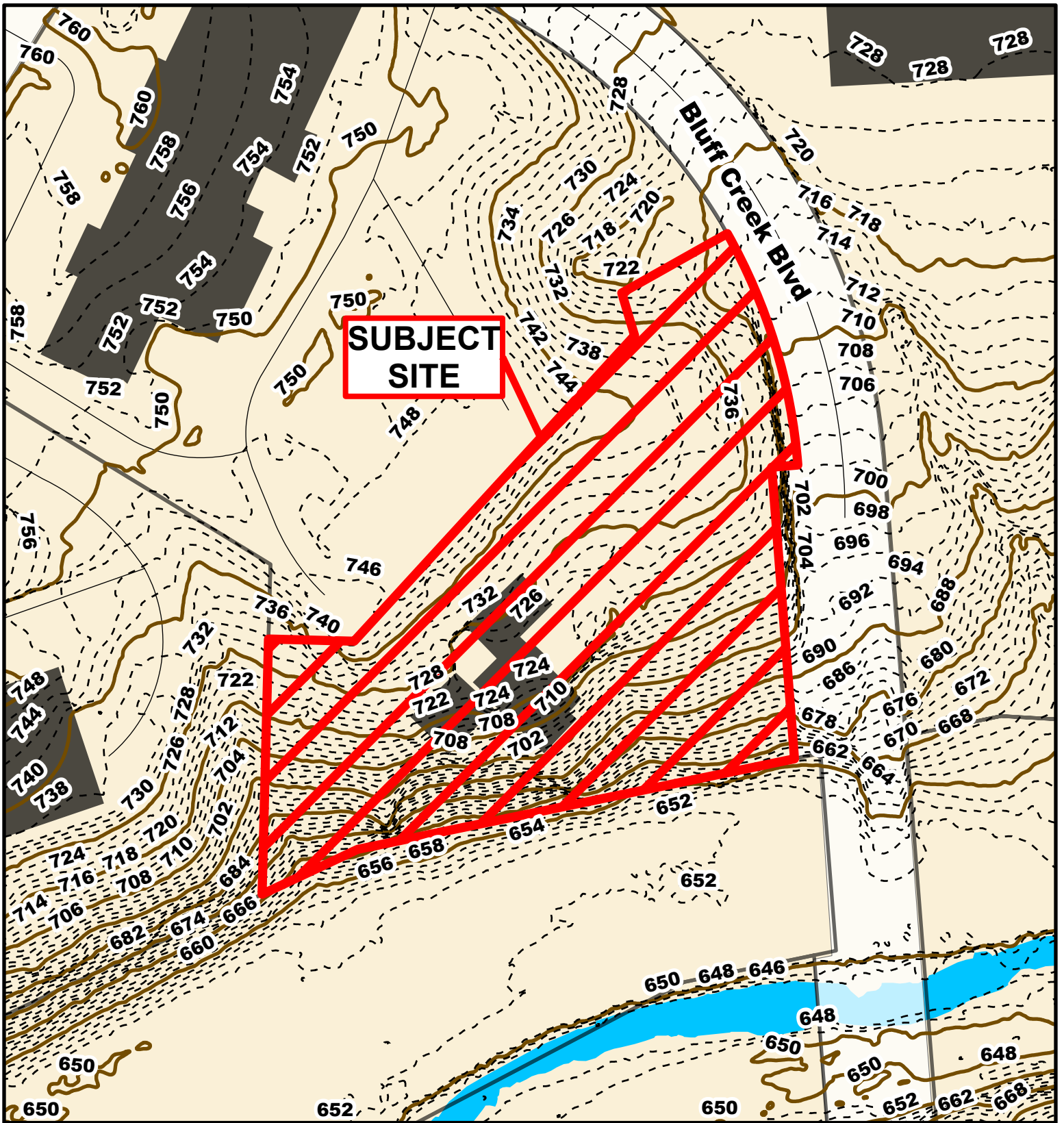


Parcel Data Source: Boone County Assessor
Created by The City of Columbia - Community Development Department

-  City Property
-  Parcels
-  City Zoning



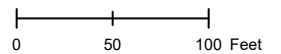
2025 Imagery: NearMap

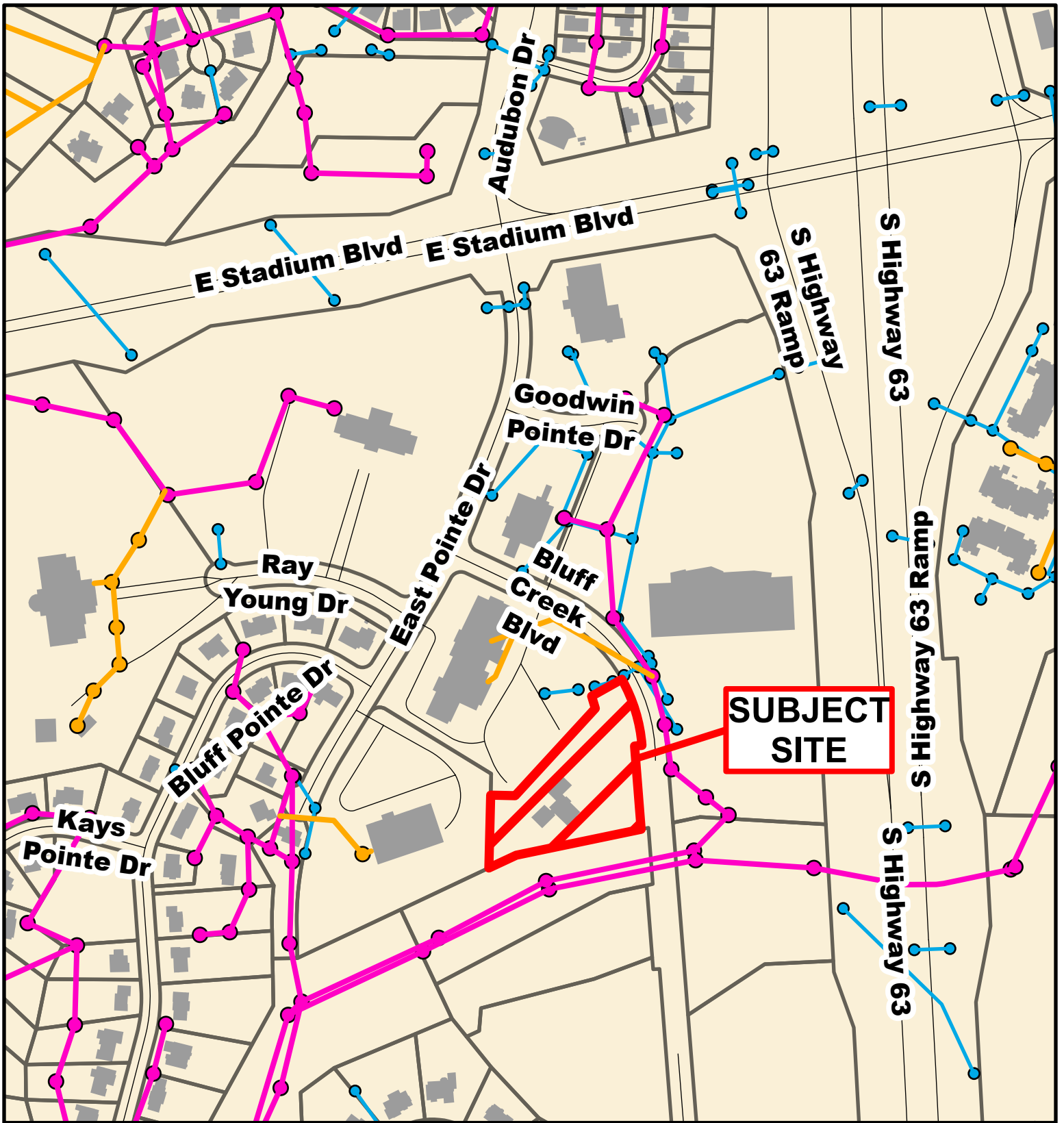


Case # 154-2026 - 2710 Bluff Creek Boulevard Variance



- 10 Foot Contour Lines
- 2 Foot Contour Lines
- Parcels
- Columbia City Limit





Case # 154-2026 - 2710 Bluff Creek Boulevard

Variance



- City Sanitary Line
- City Storm Lines
- Private Sanitary Line
- Parcels
- Columbia City Limit

