

*2015 City of Columbia  
DirectionFinder® Survey*

**Appendix D: GIS Maps**

*Submitted to*

*The City of Columbia, MO*



725 W. Frontier Circle

Olathe, KS 66061

(913) 829- 1215

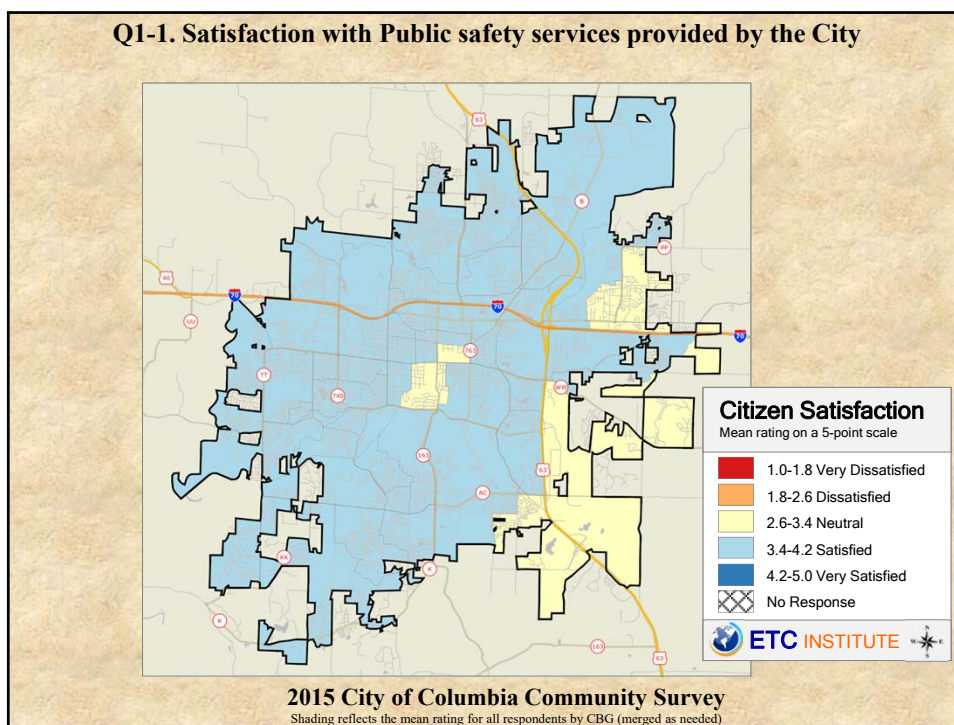
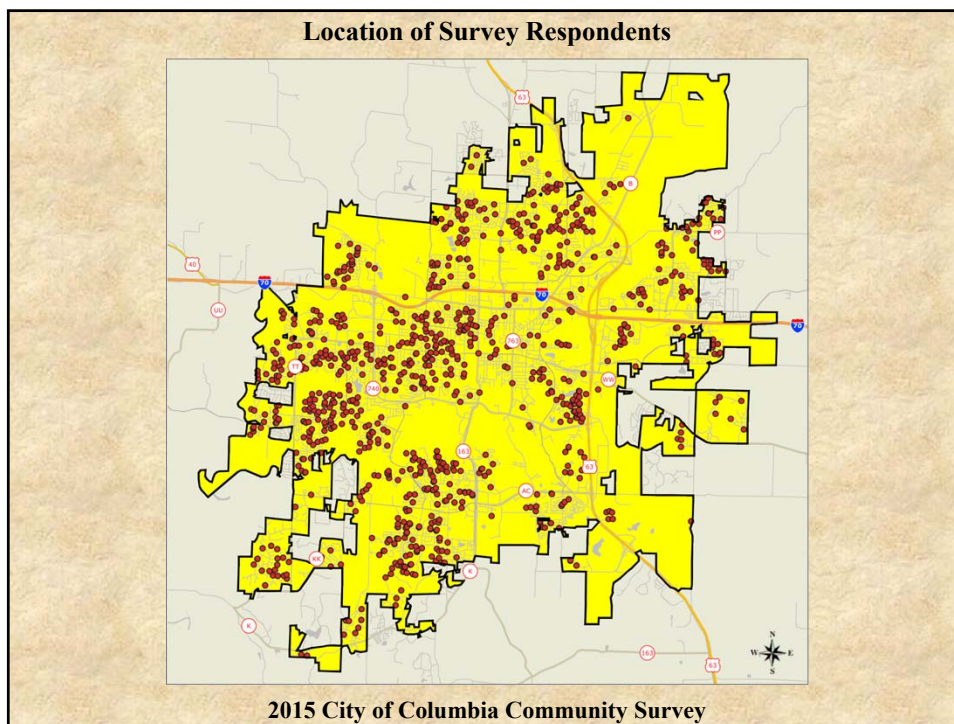
February 2016

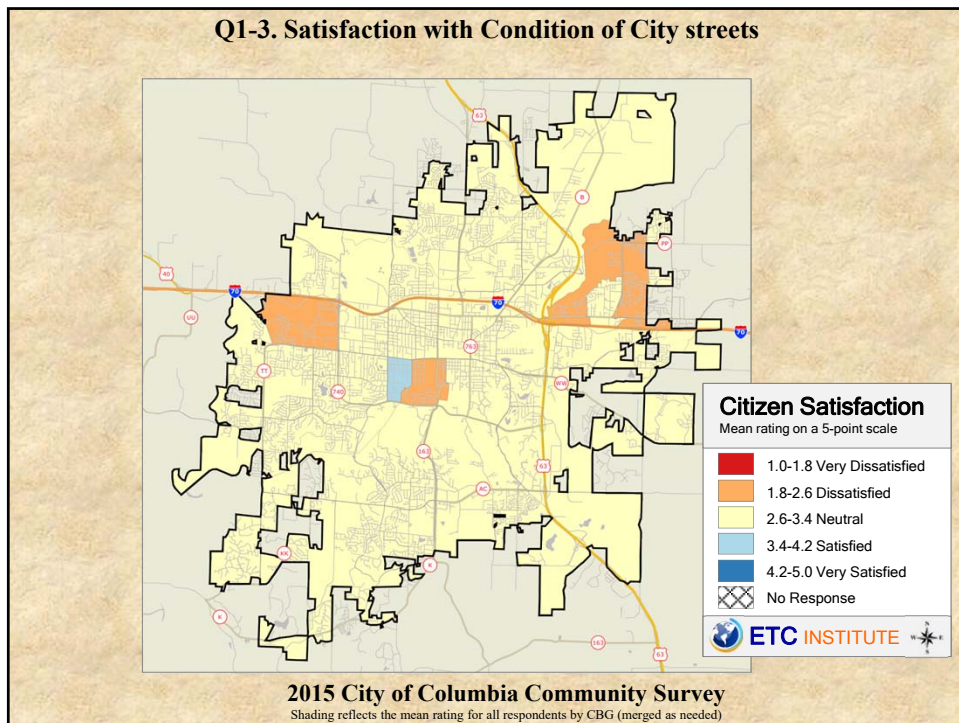
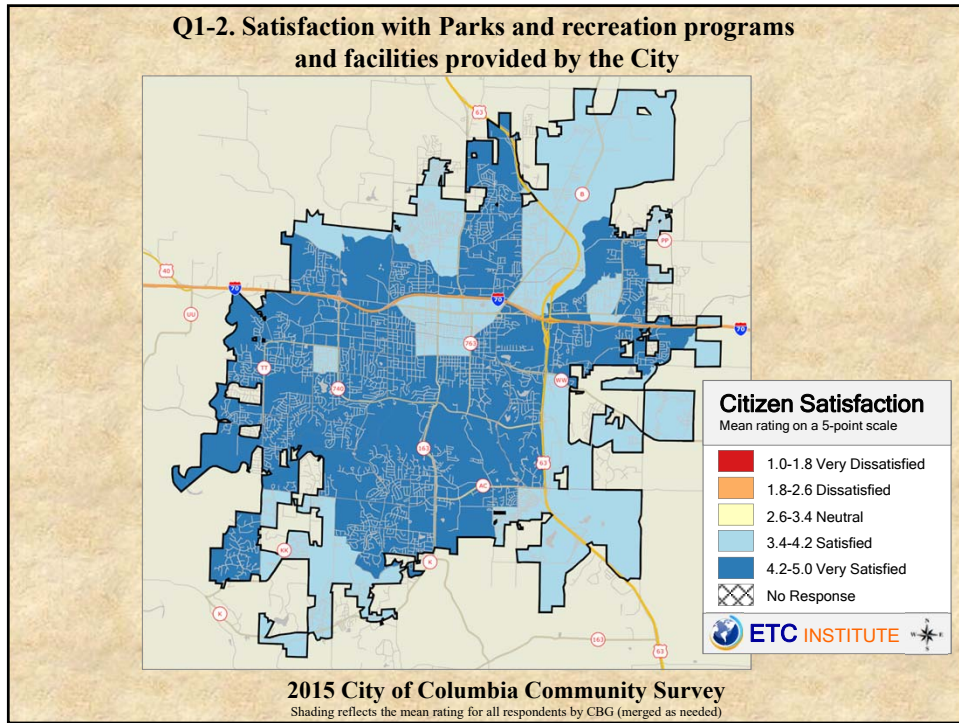
## Interpreting the Maps

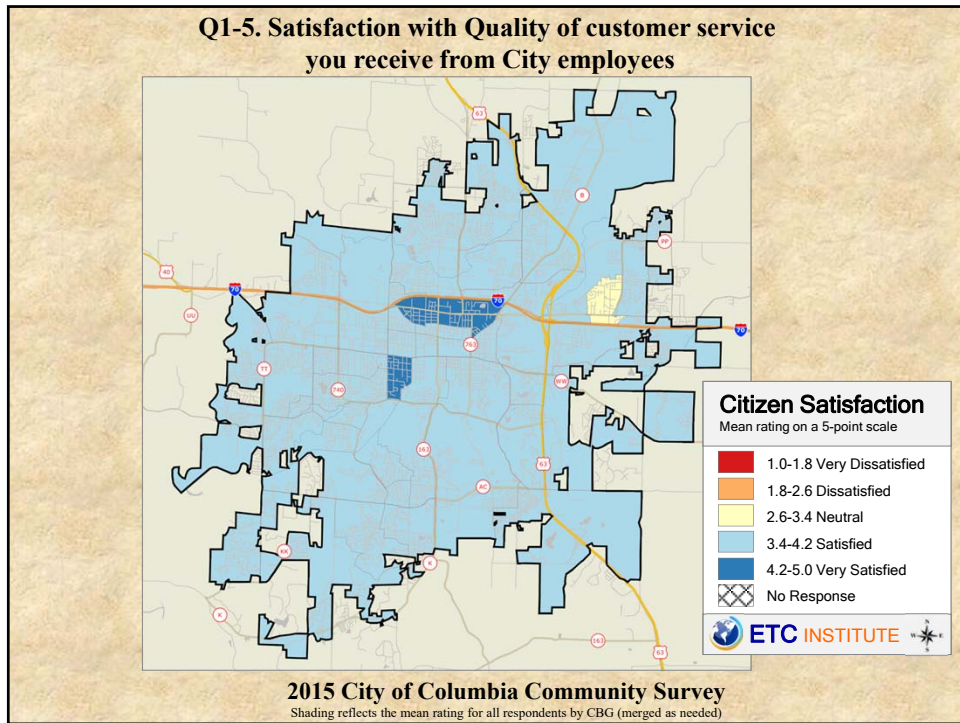
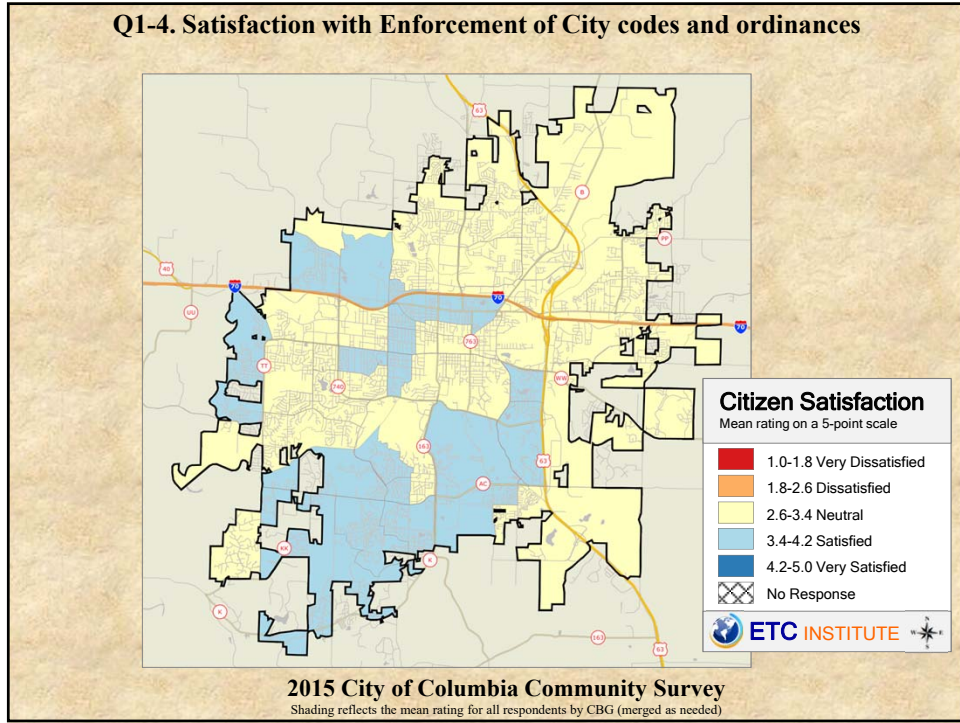
The maps on the following pages show the mean ratings for several questions on the survey by Census Block Group. If all areas on a map are the same color, then residents generally feel the same about that issue regardless of the location of their home.

When reading the maps, please use the following color scheme as a guide:

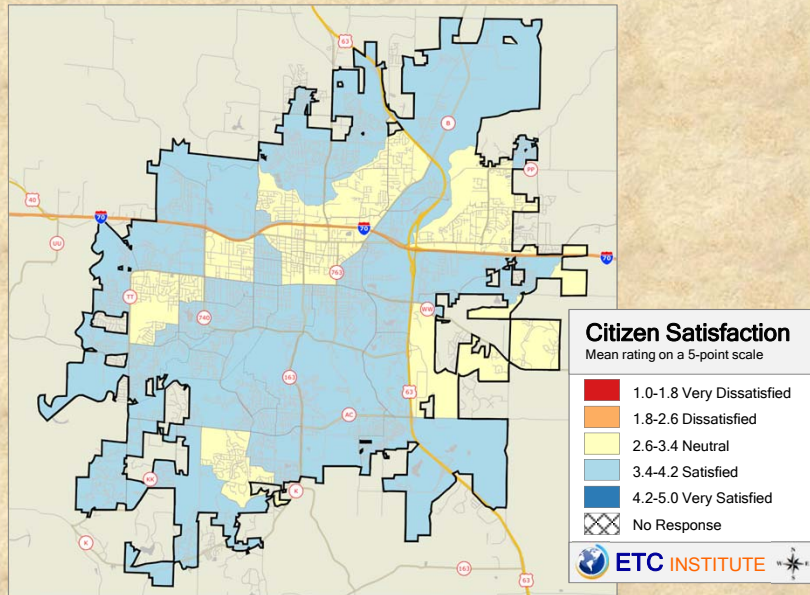
- **DARK/LIGHT BLUE** shades indicate POSITIVE ratings. Shades of blue generally indicate satisfaction with a service, ratings of “excellent” or “good” and ratings of “very safe” or “safe.”
- **OFF-WHITE** shades indicate NEUTRAL ratings. Shades of neutral generally indicate that residents thought the quality of service delivery is adequate.
- **ORANGE/RED** shades indicate NEGATIVE ratings. Shades of orange/red generally indicate dissatisfaction with a service, ratings of “below average” or “poor” and ratings of “unsafe” or “very unsafe.”





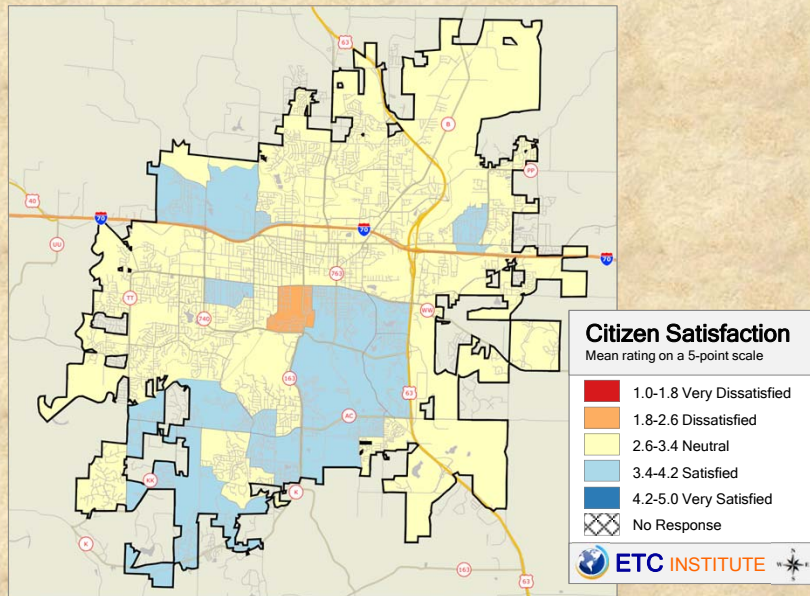


**Q1-6. Satisfaction with Effectiveness of City communication with the public**



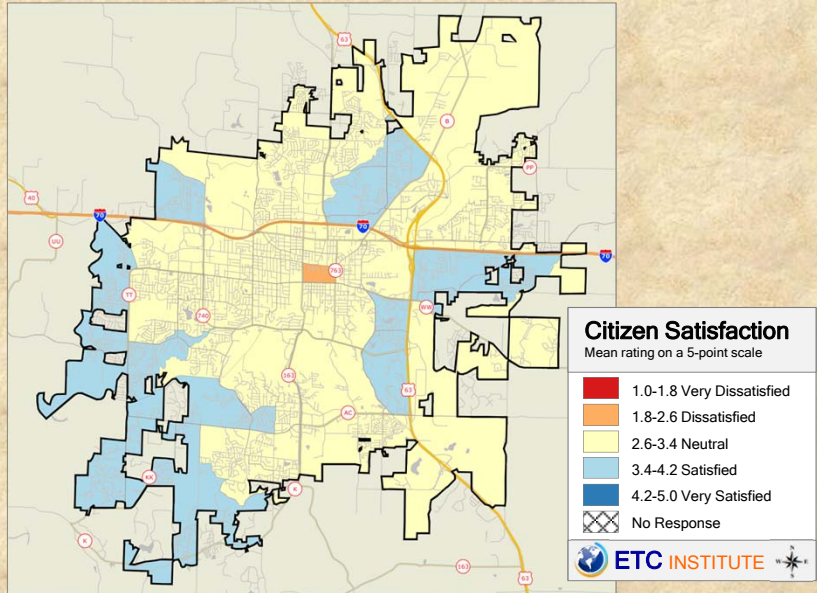
**2015 City of Columbia Community Survey**  
 Shading reflects the mean rating for all respondents by CBG (merged as needed)

**Q1-7. Satisfaction with Quality of City permitting services for buildings**



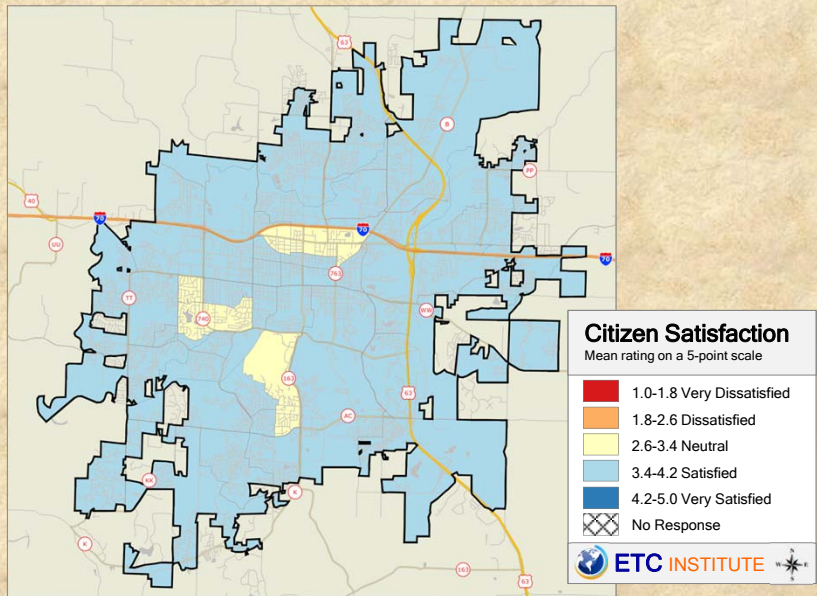
**2015 City of Columbia Community Survey**  
 Shading reflects the mean rating for all respondents by CBG (merged as needed)

**Q1-8. Satisfaction with The City's runoff/stormwater management system**

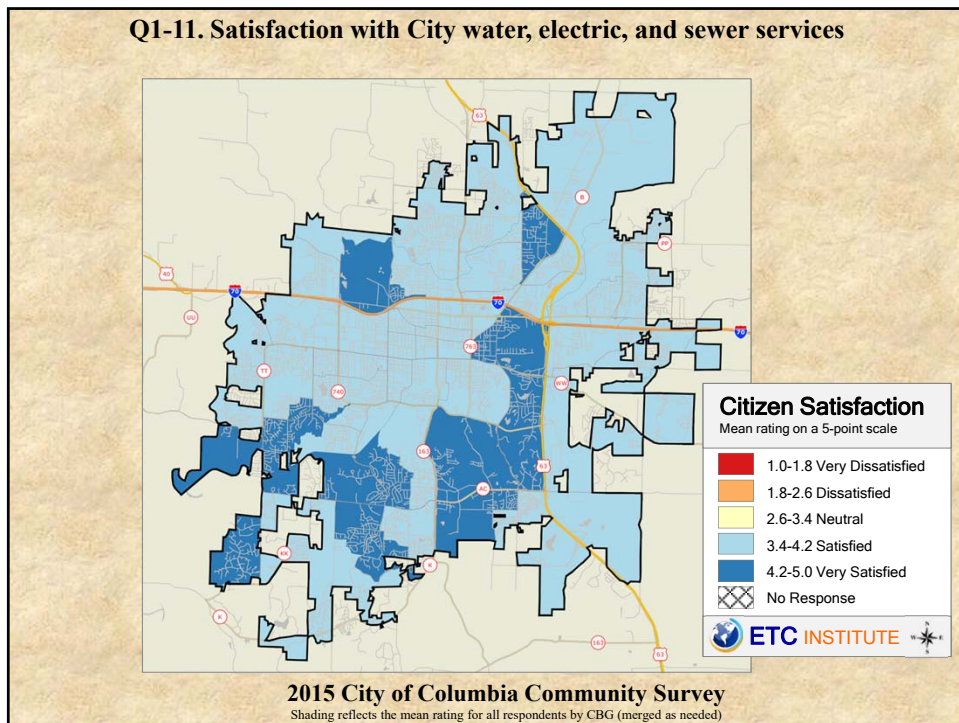
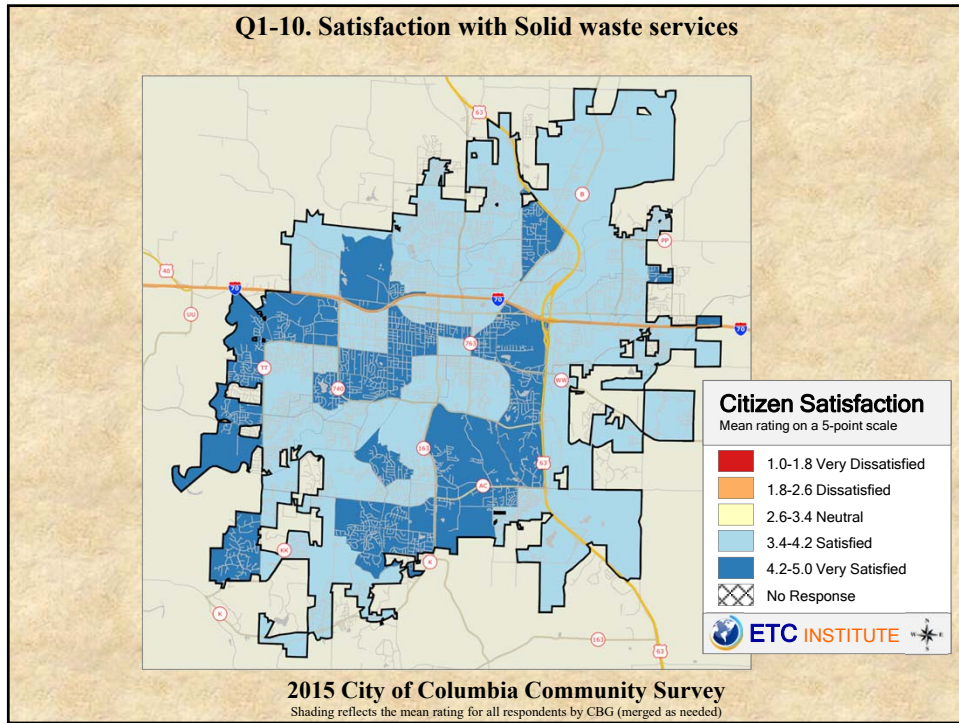


**2015 City of Columbia Community Survey**  
Shading reflects the mean rating for all respondents by CBG (merged as needed)

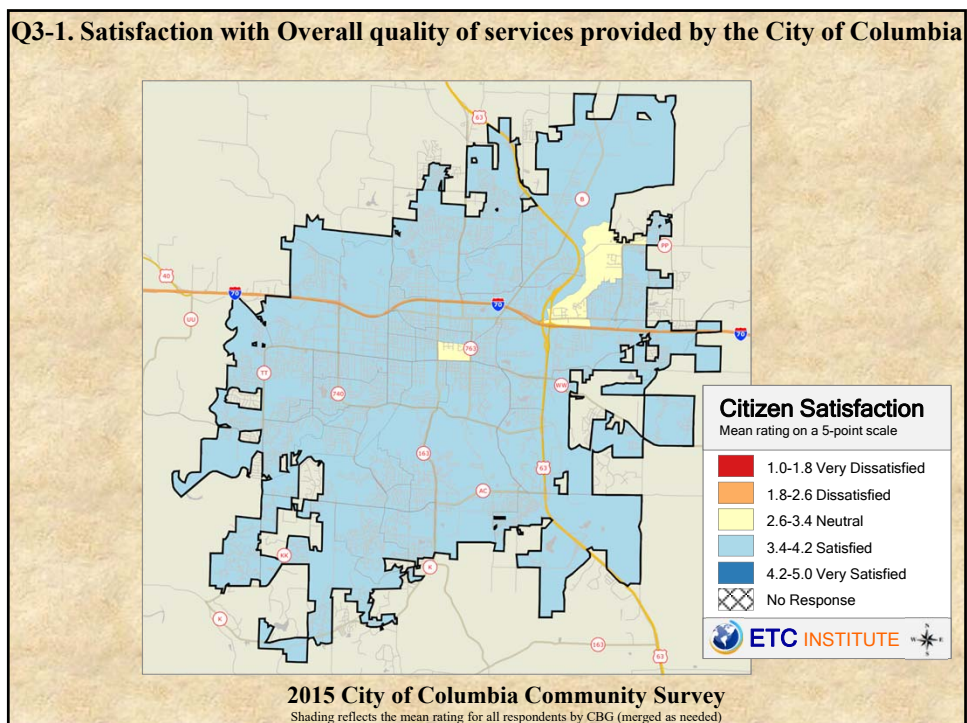
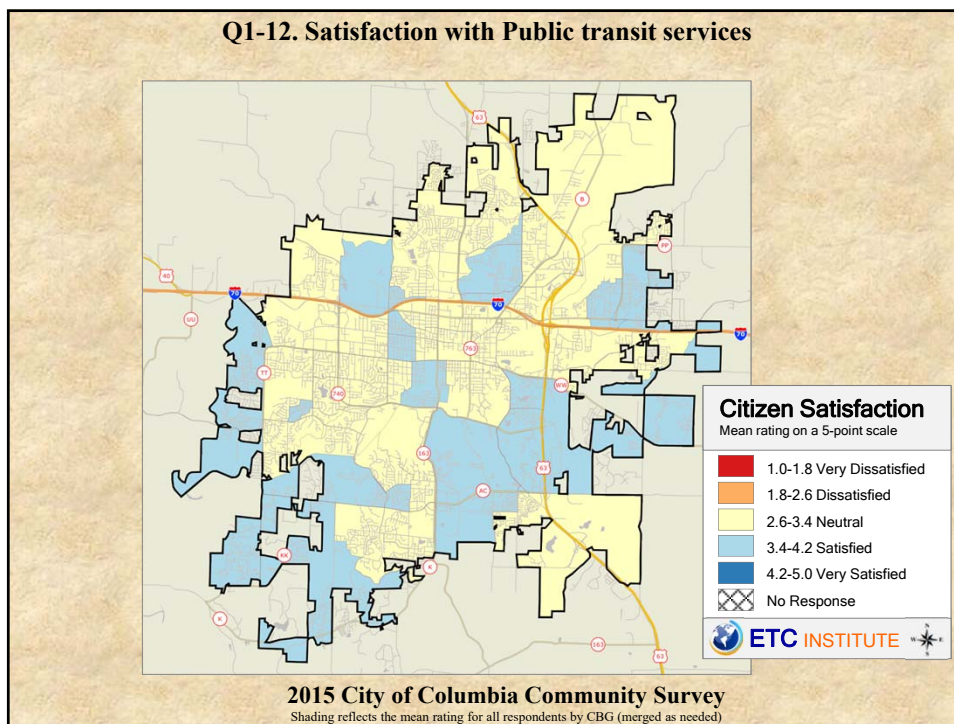
**Q1-9. Satisfaction with Public health services provided by the City**

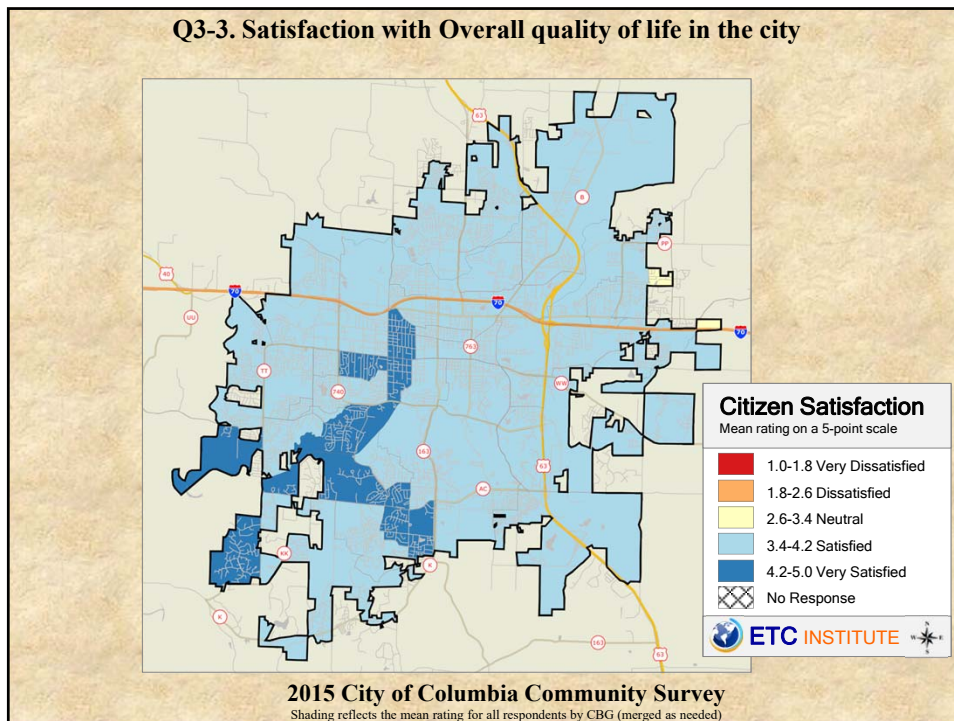
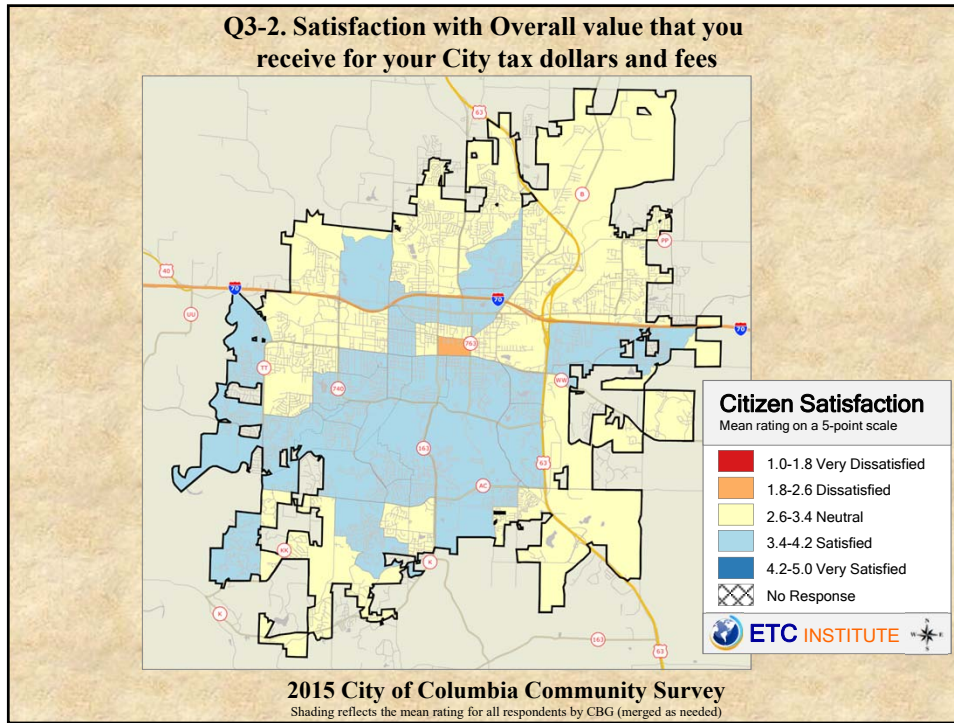


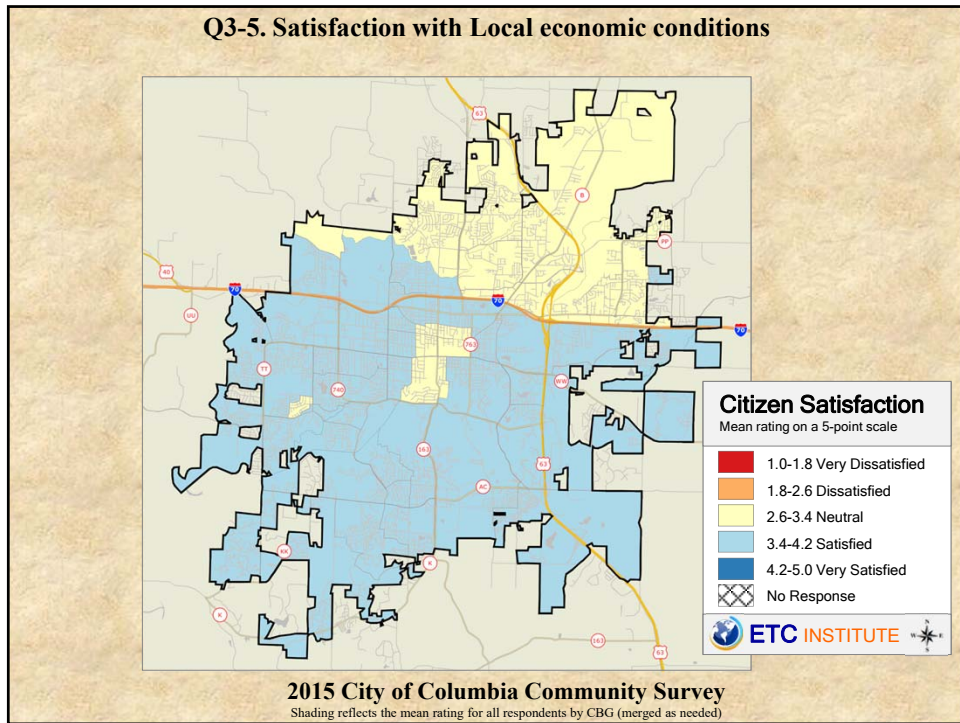
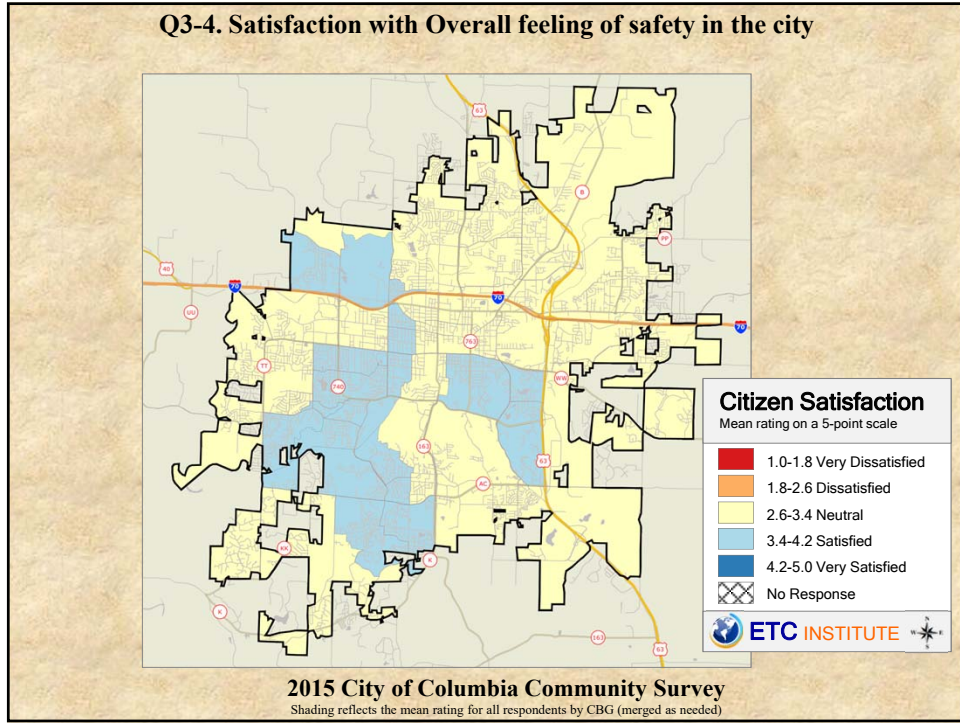
**2015 City of Columbia Community Survey**  
Shading reflects the mean rating for all respondents by CBG (merged as needed)

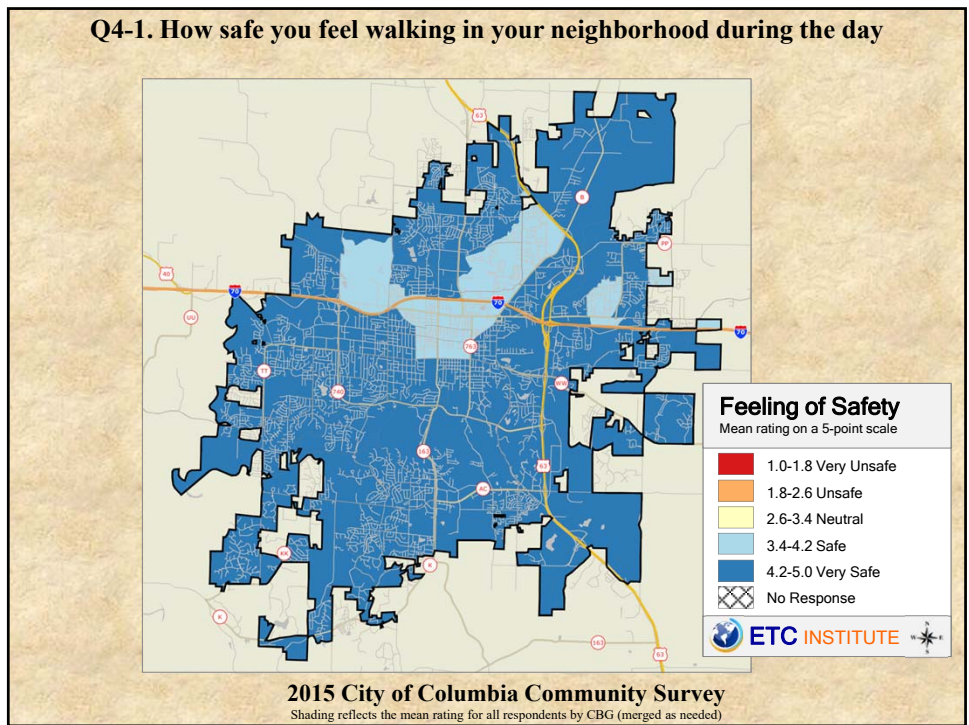
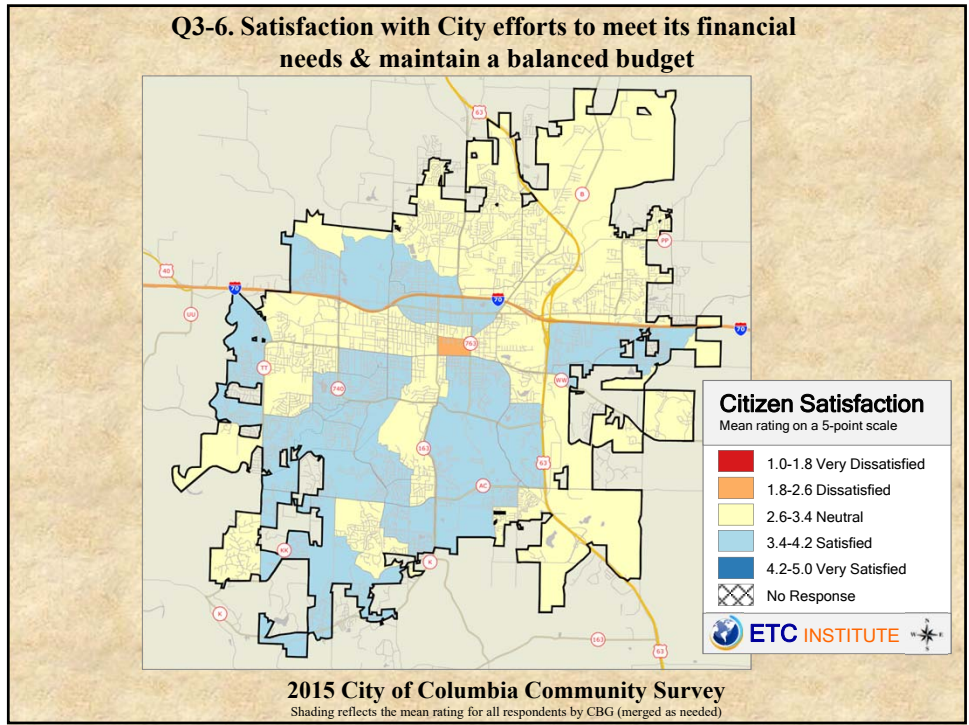




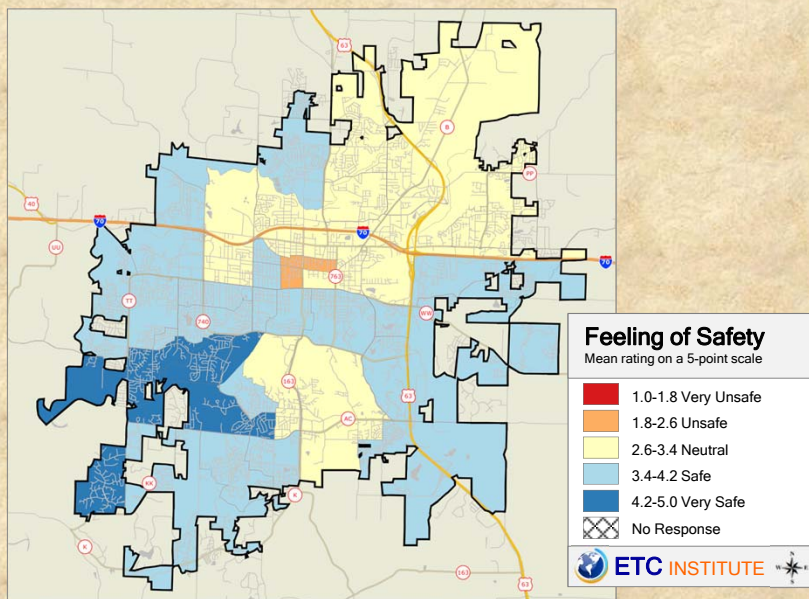






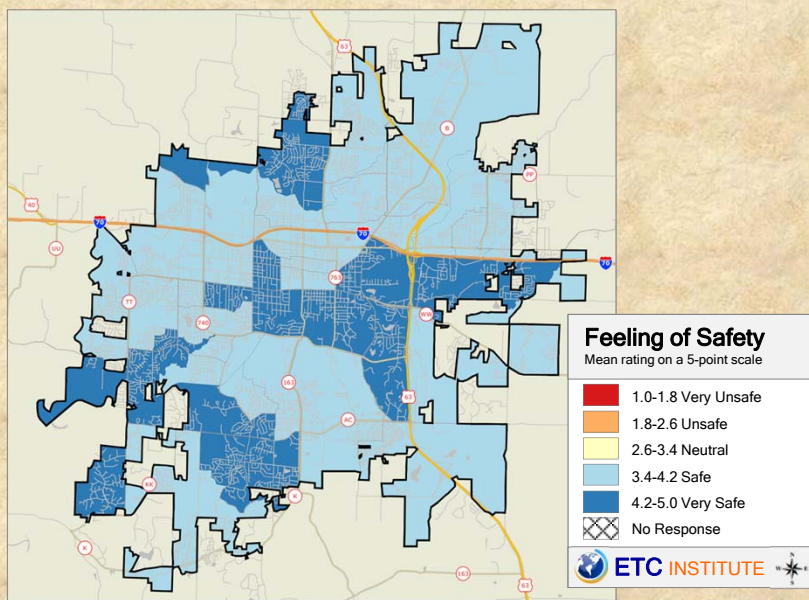


**Q4-2. How safe you feel walking in your neighborhood at night**

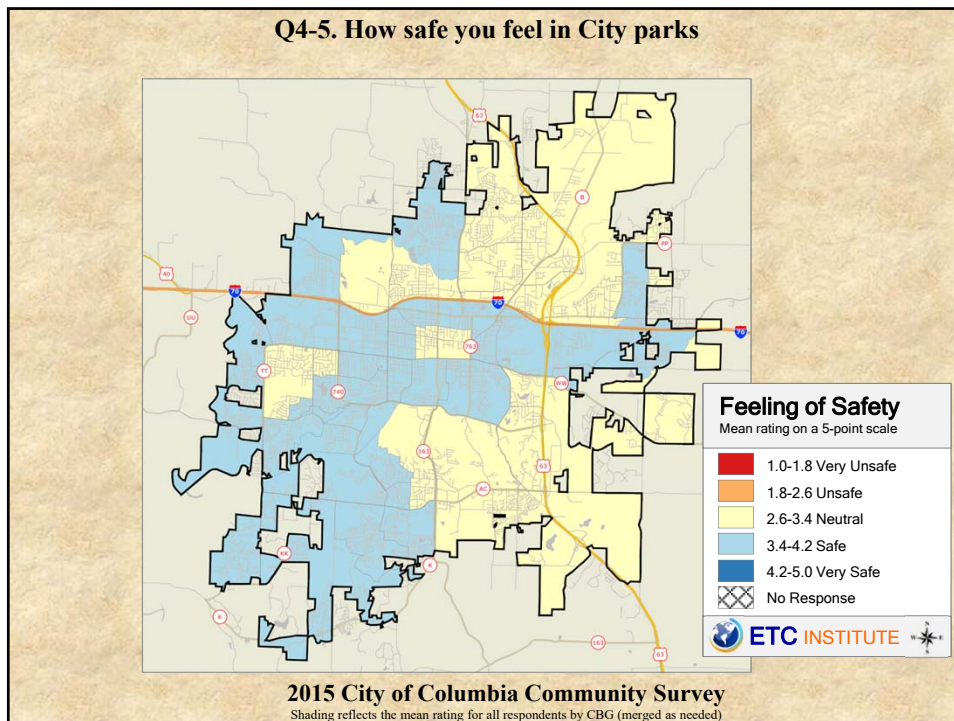
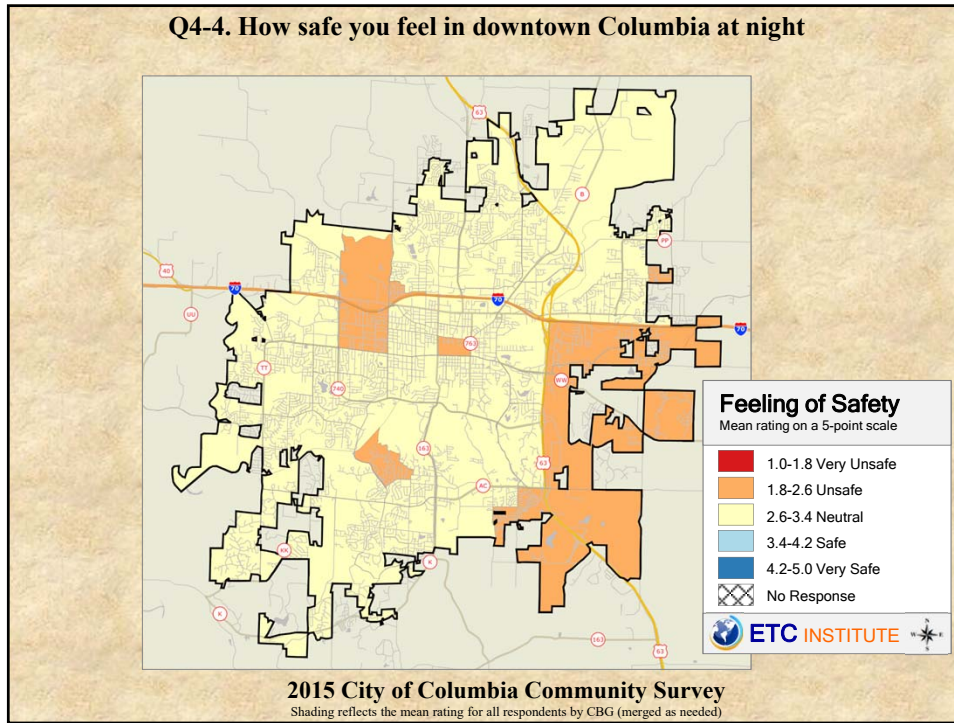


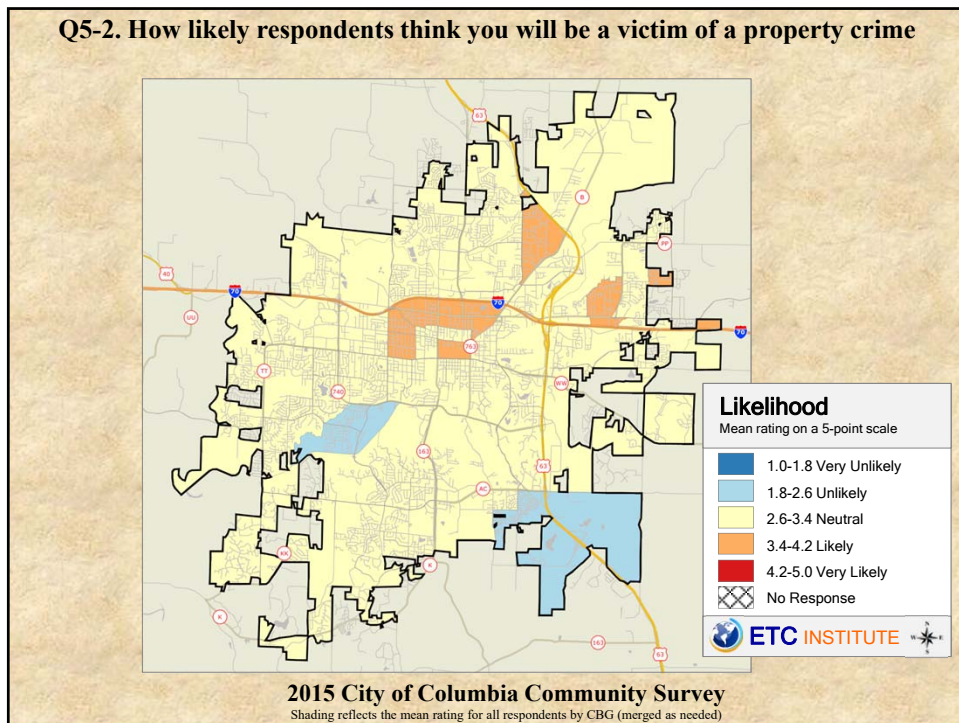
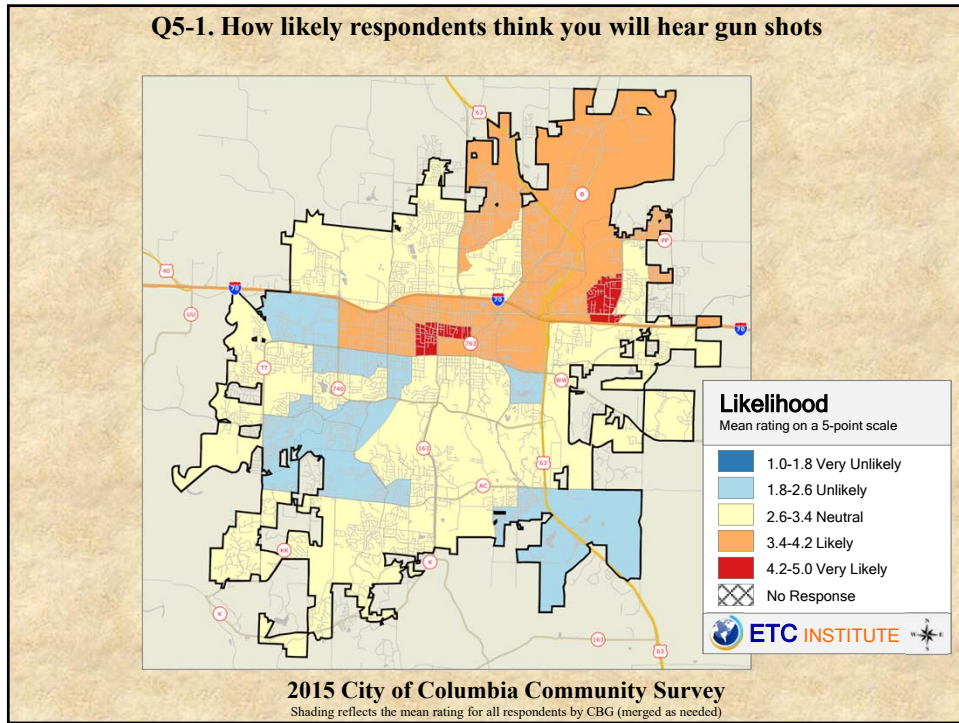
**2015 City of Columbia Community Survey**  
 Shading reflects the mean rating for all respondents by CBG (merged as needed)

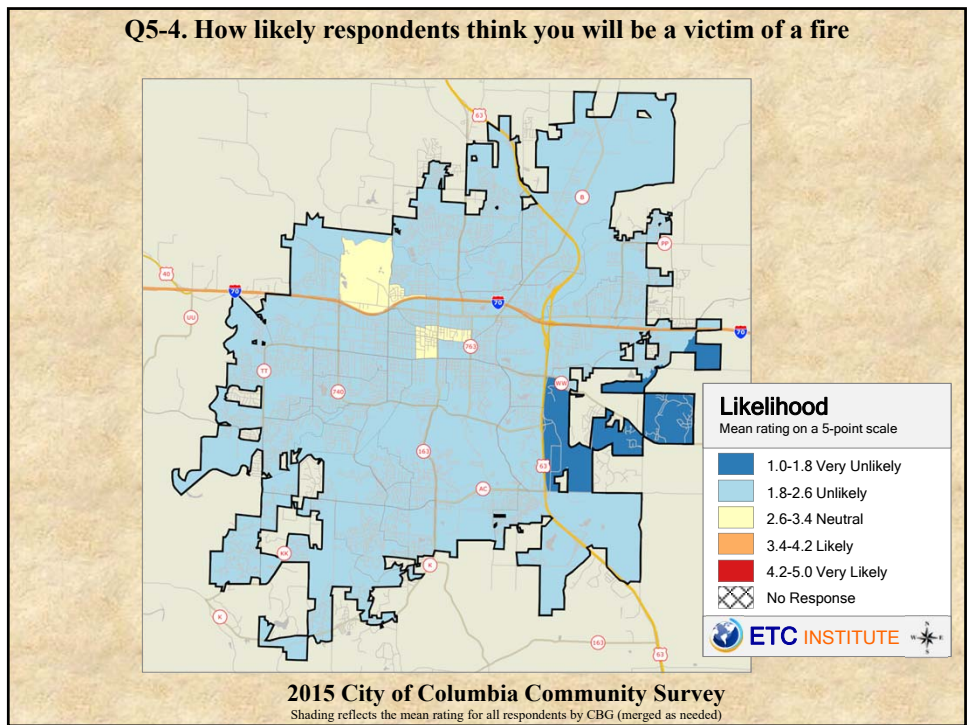
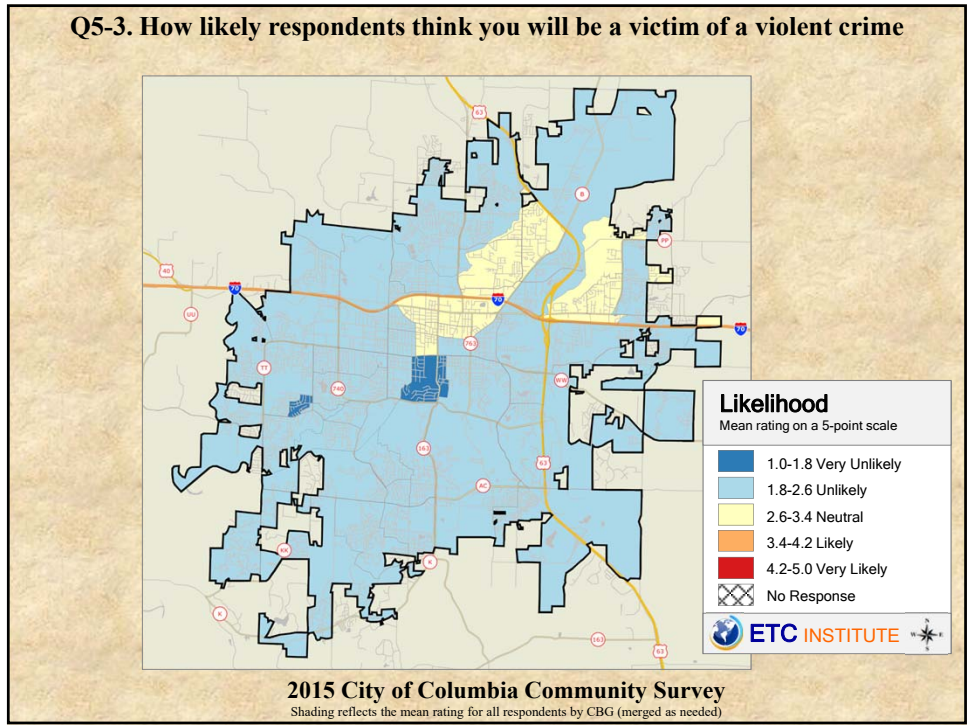
**Q4-3. How safe you feel in downtown Columbia during the day**



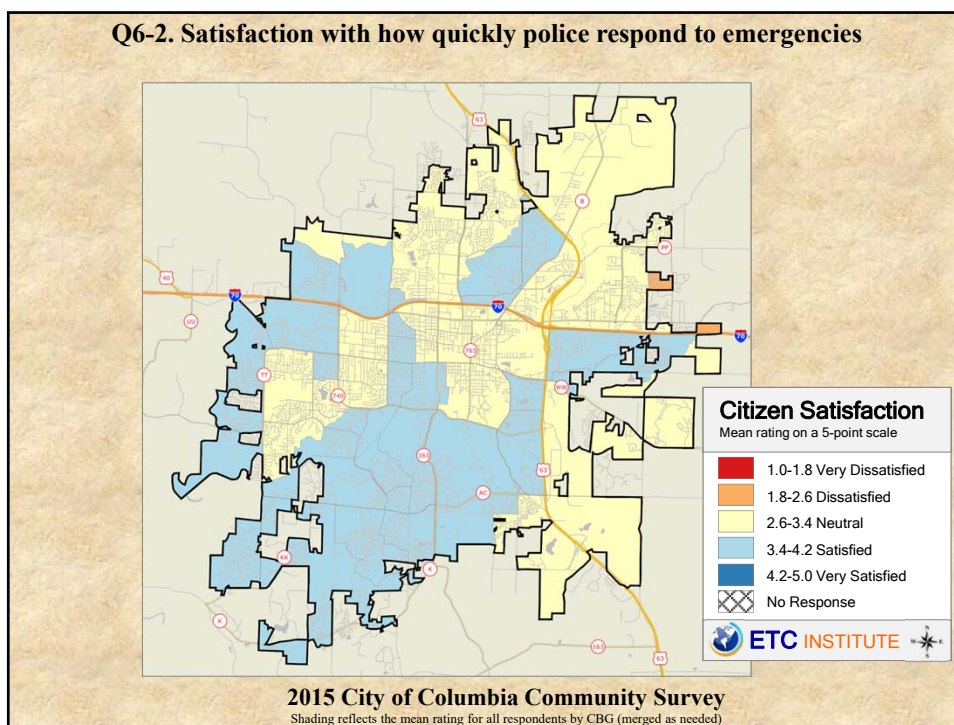
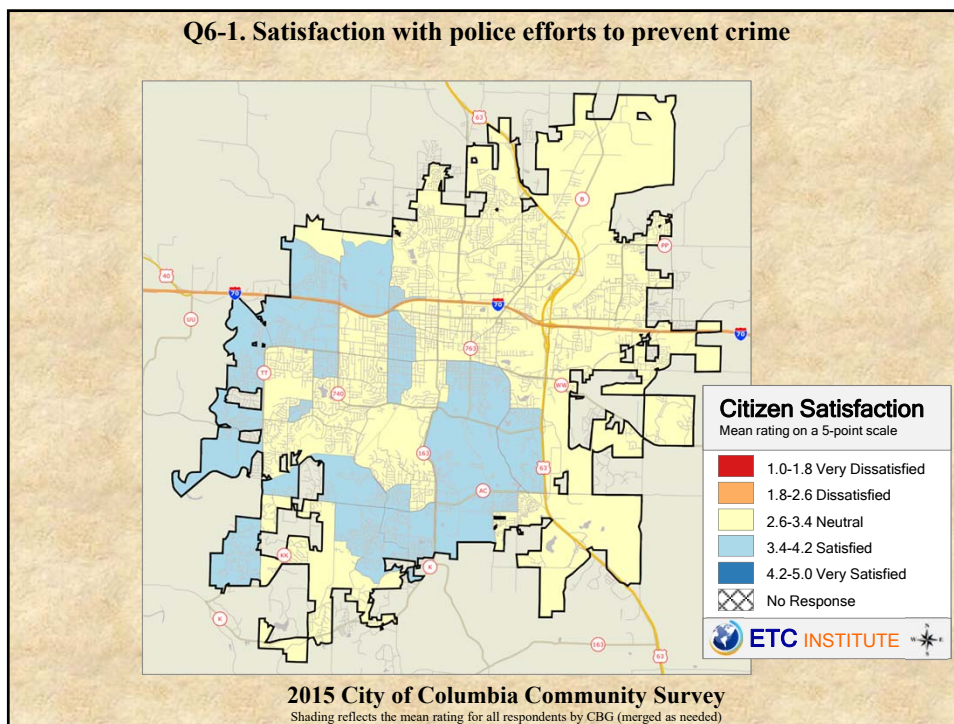
**2015 City of Columbia Community Survey**  
 Shading reflects the mean rating for all respondents by CBG (merged as needed)

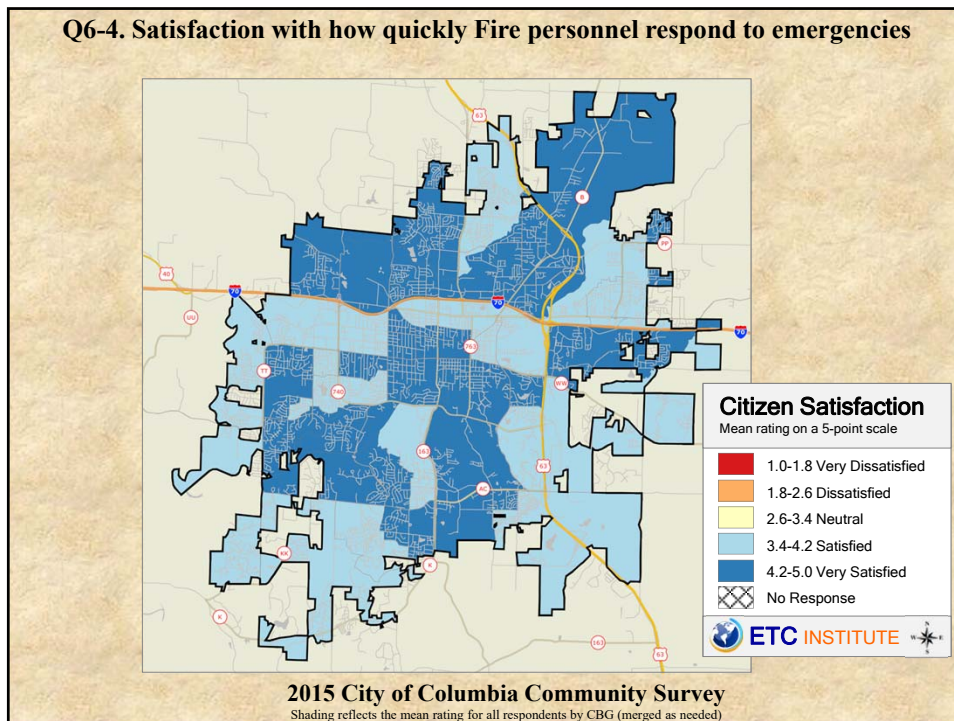
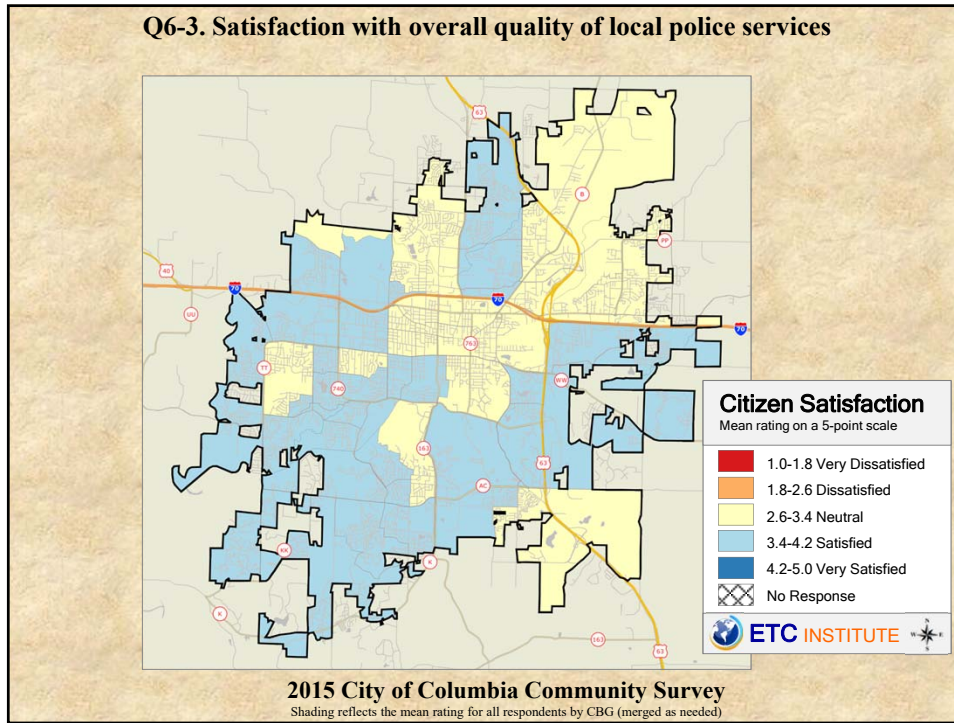


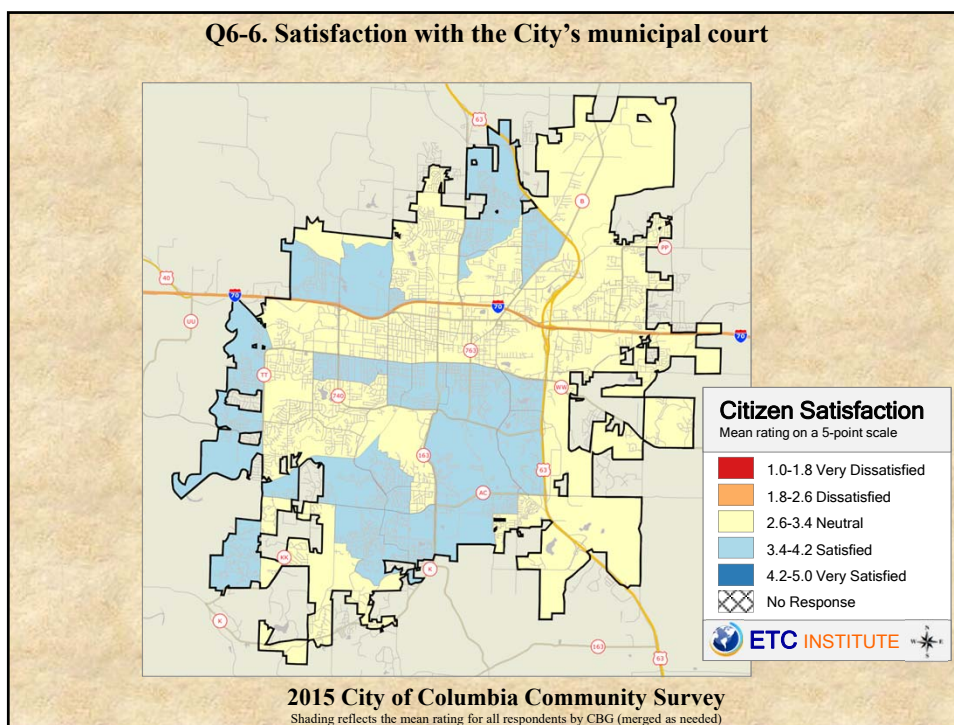
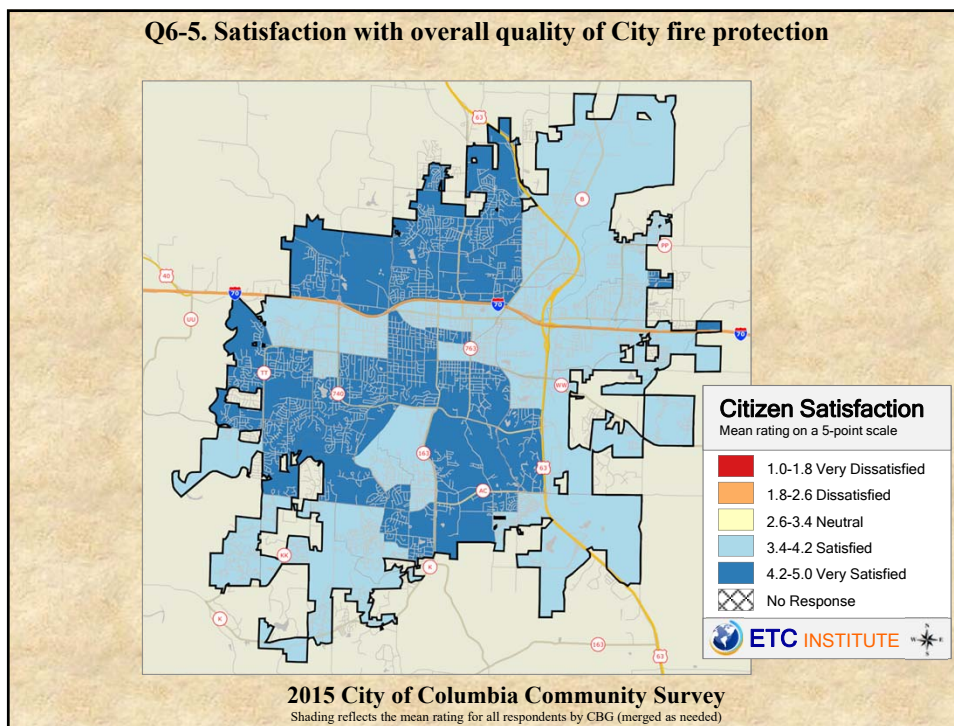


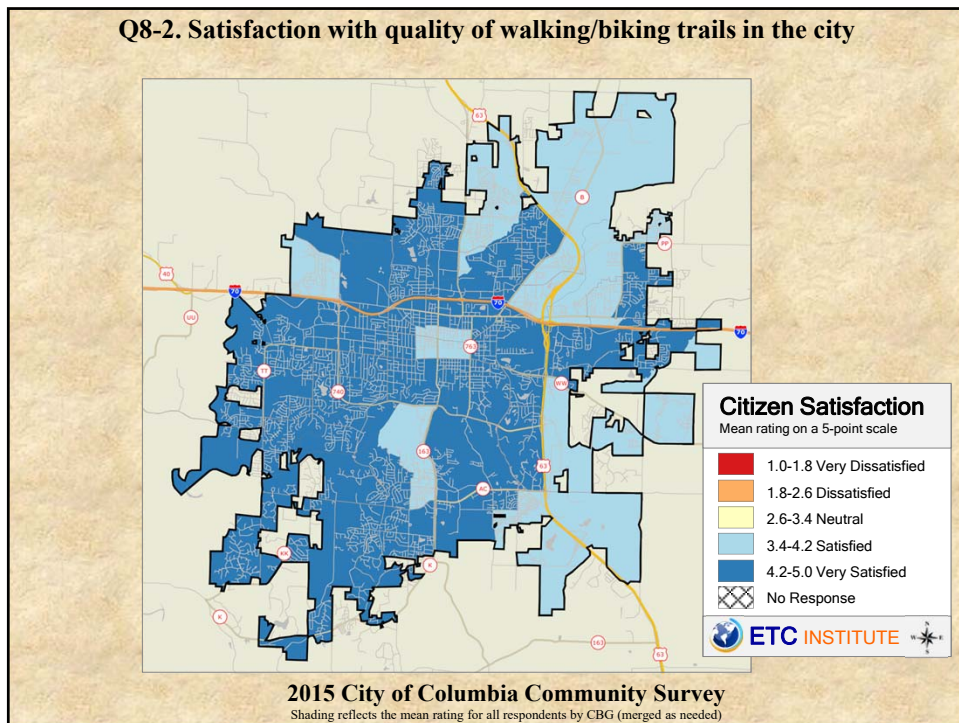
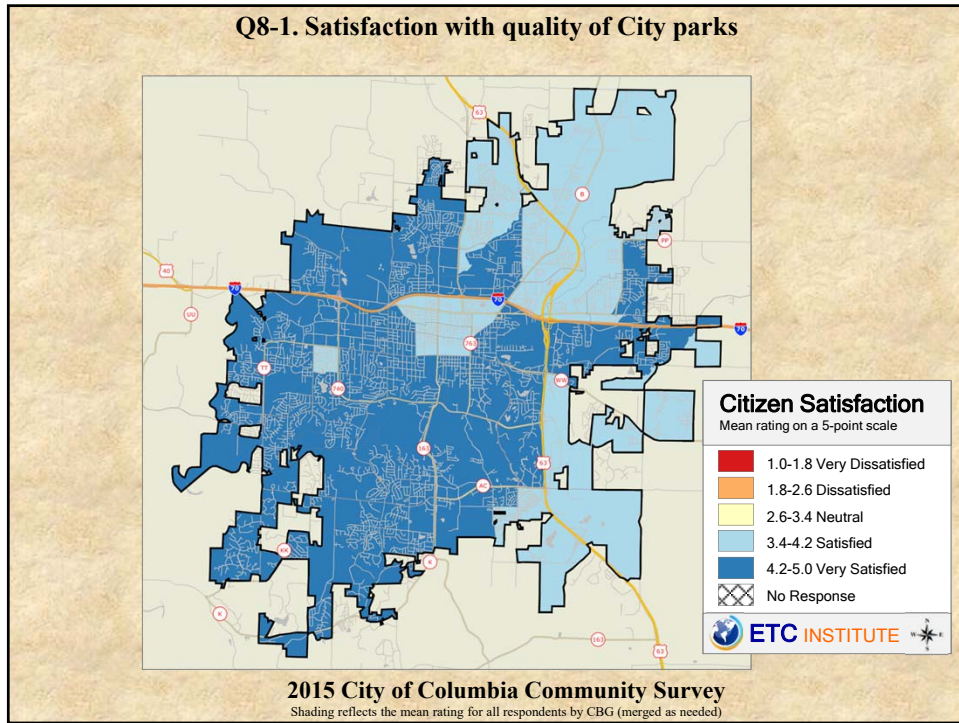


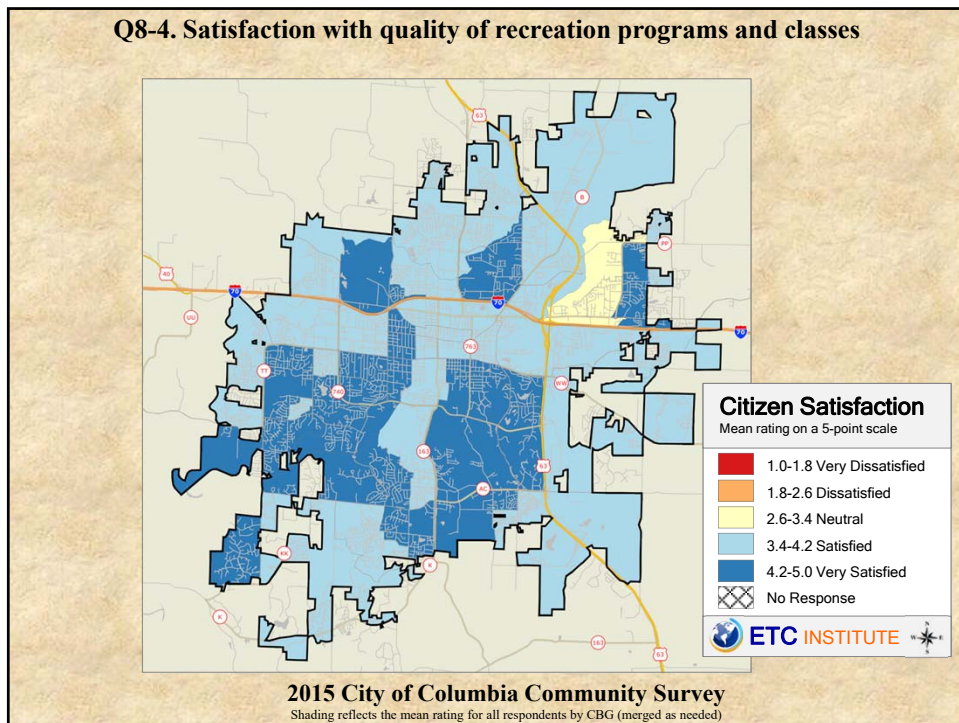
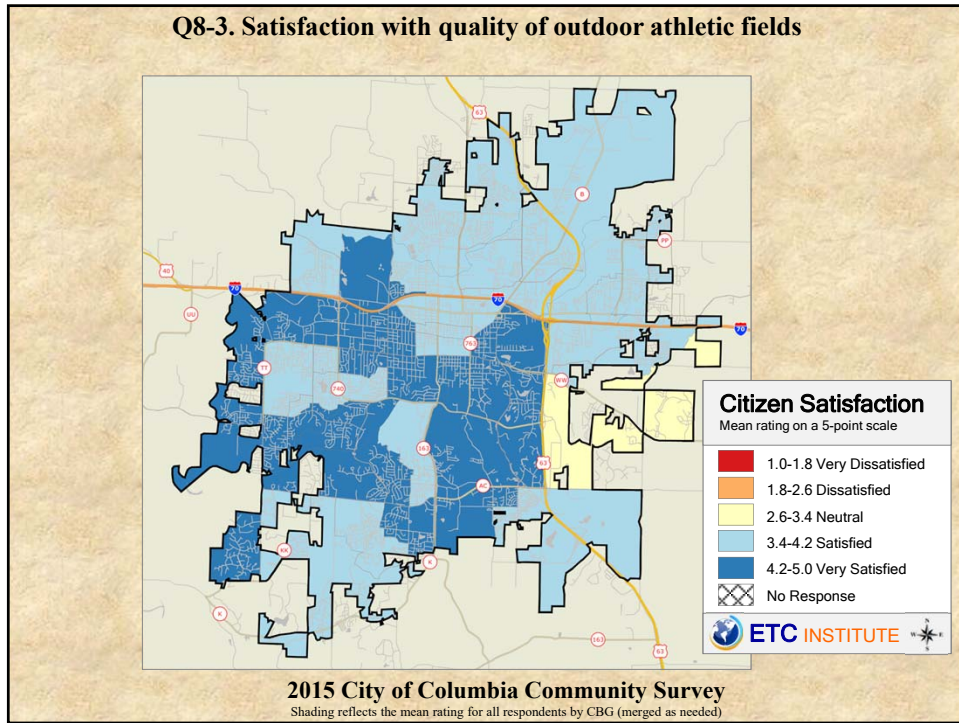


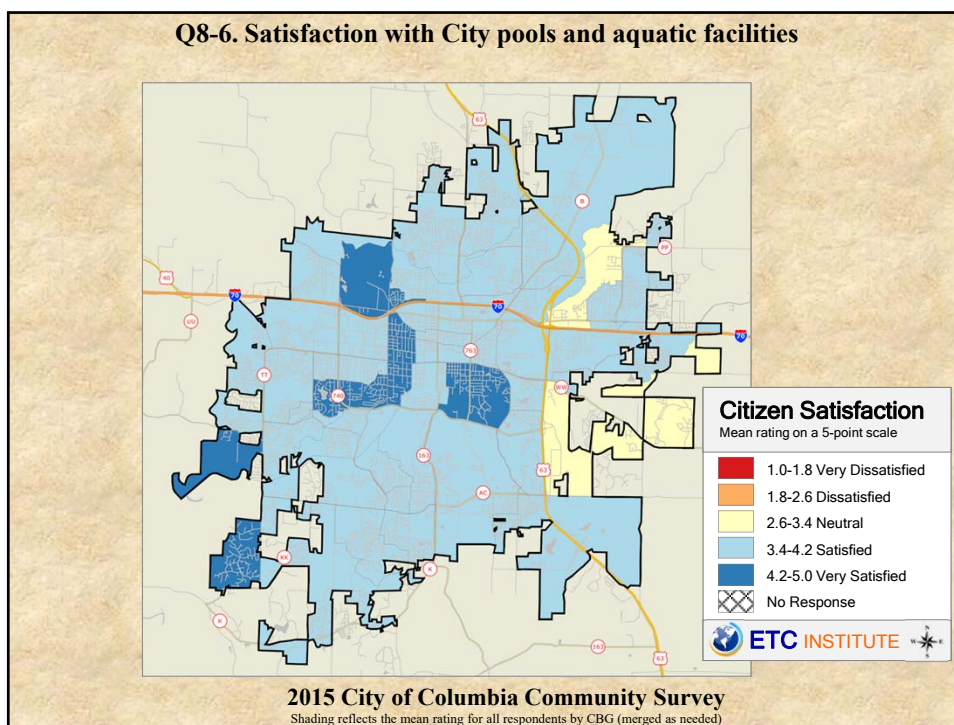
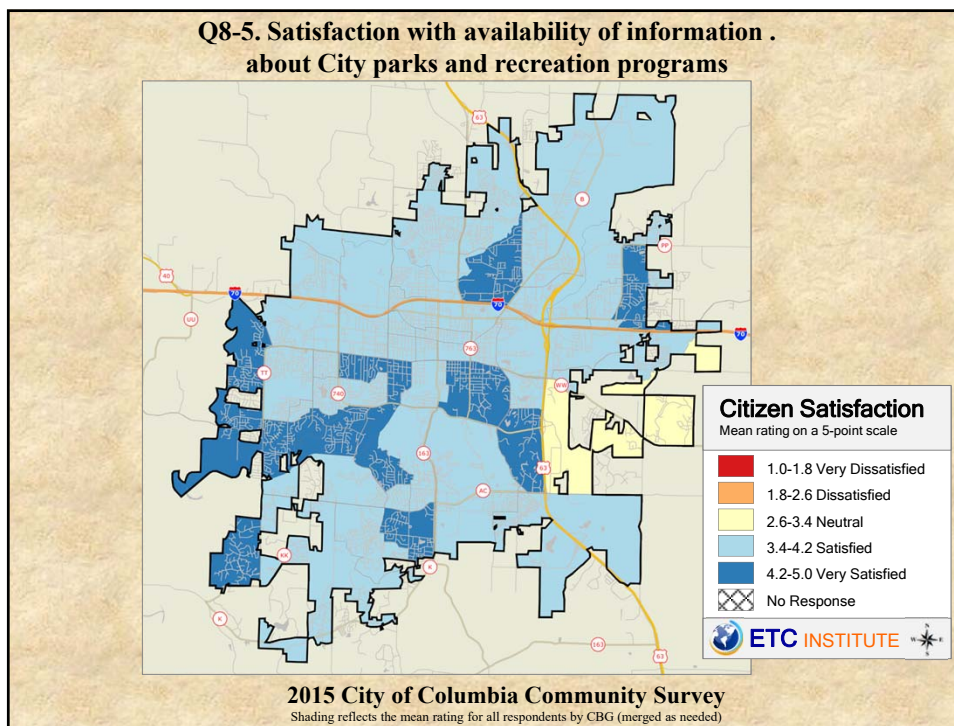




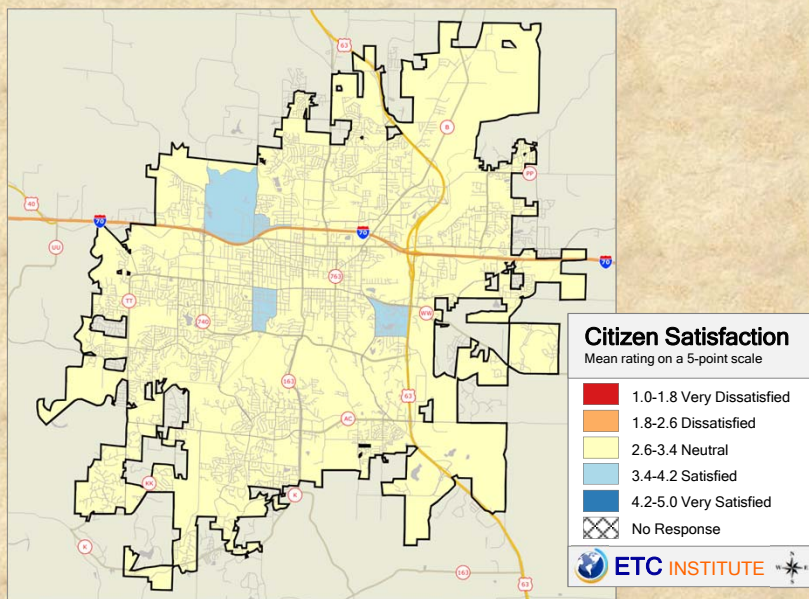








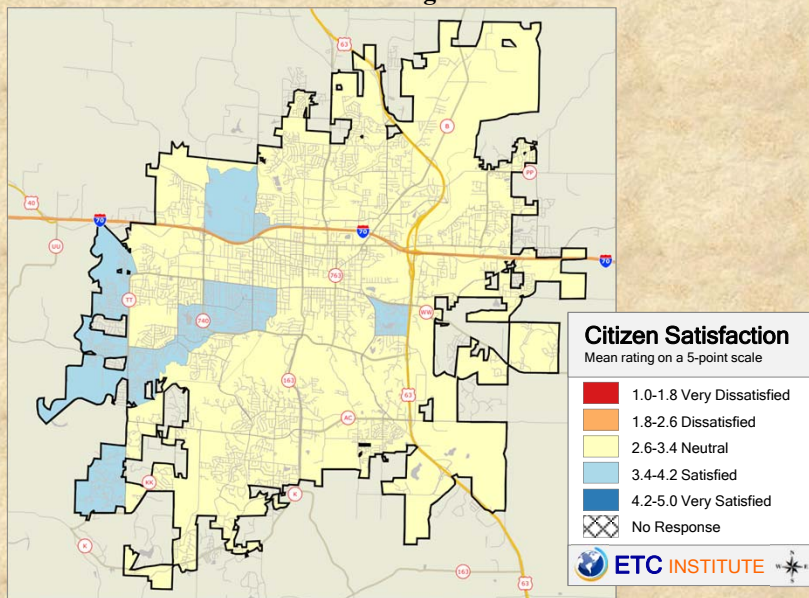
**Q10-1. Satisfaction with City maintenance and repair services for major City streets**



**2015 City of Columbia Community Survey**

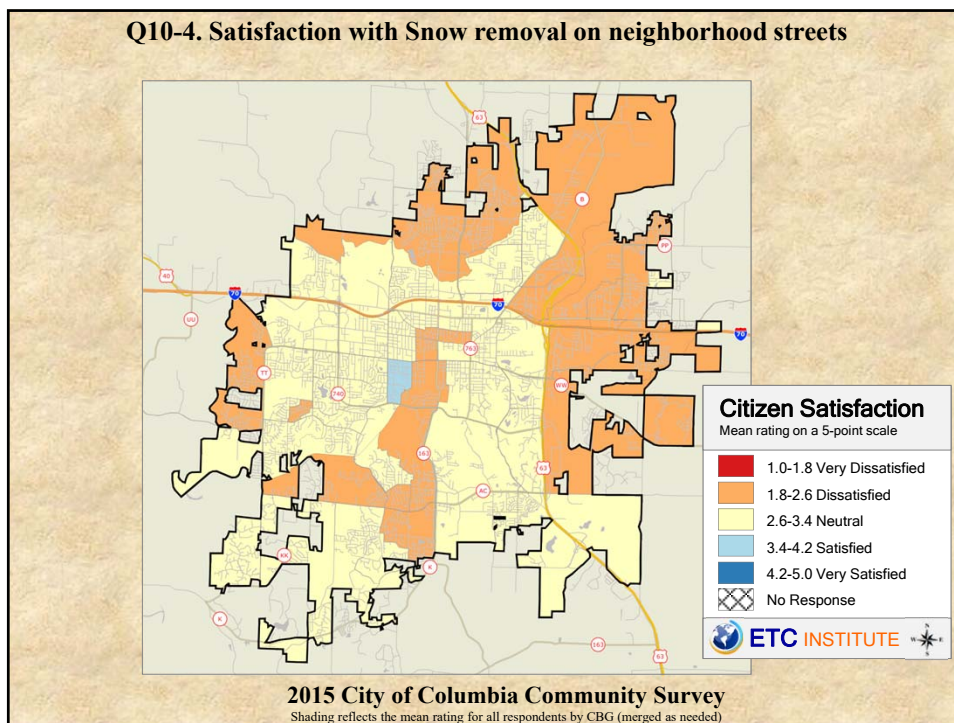
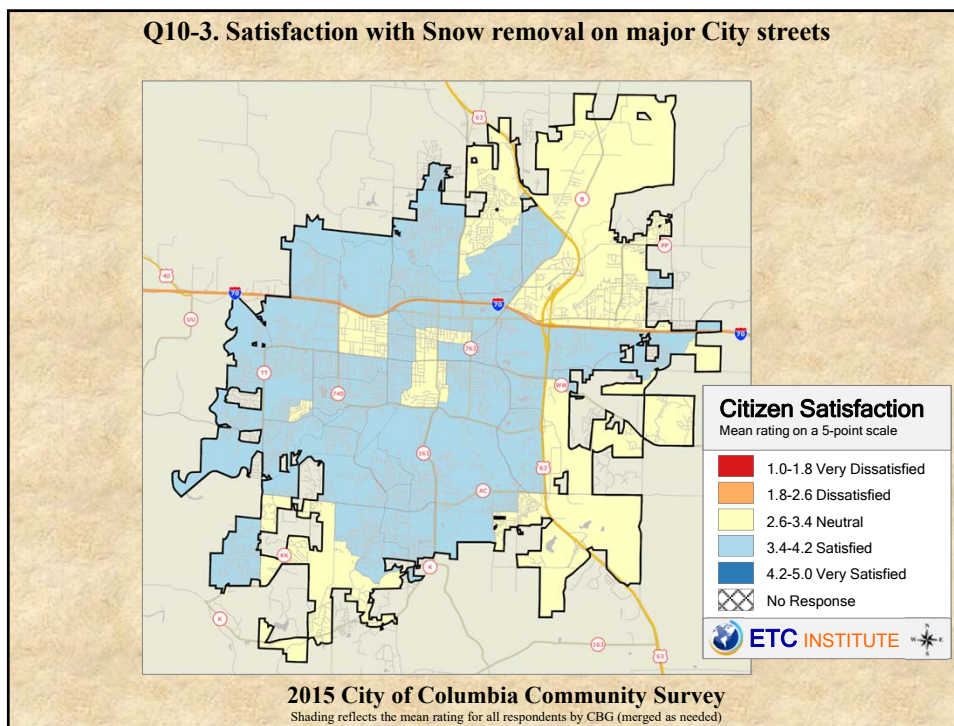
Shading reflects the mean rating for all respondents by CBG (merged as needed)

**Q10-2. Satisfaction with City maintenance and repair services for streets in YOUR neighborhood**

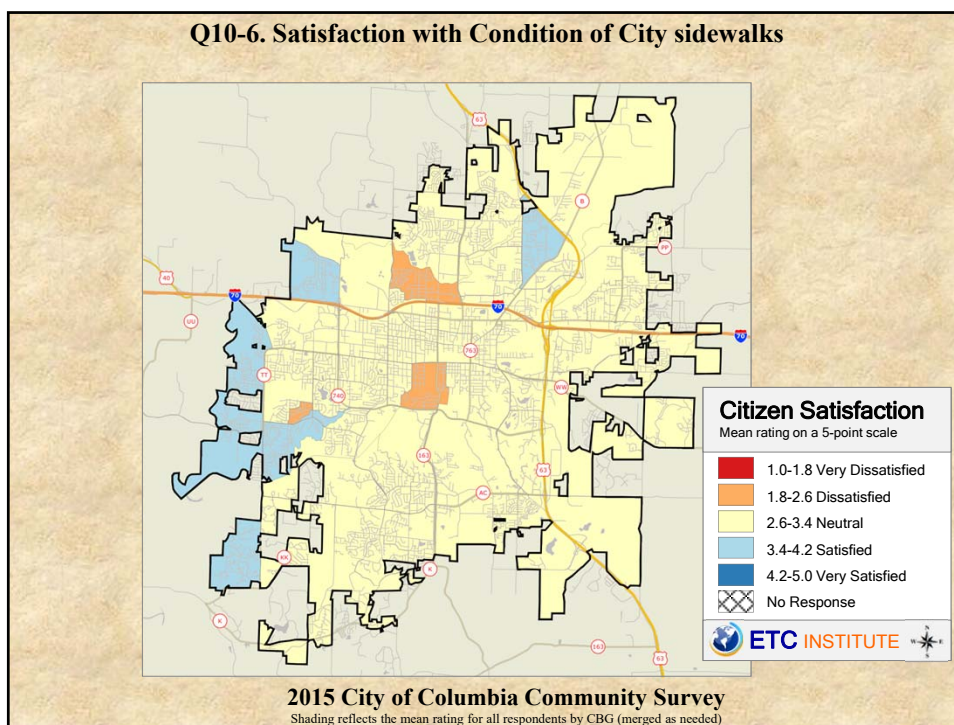
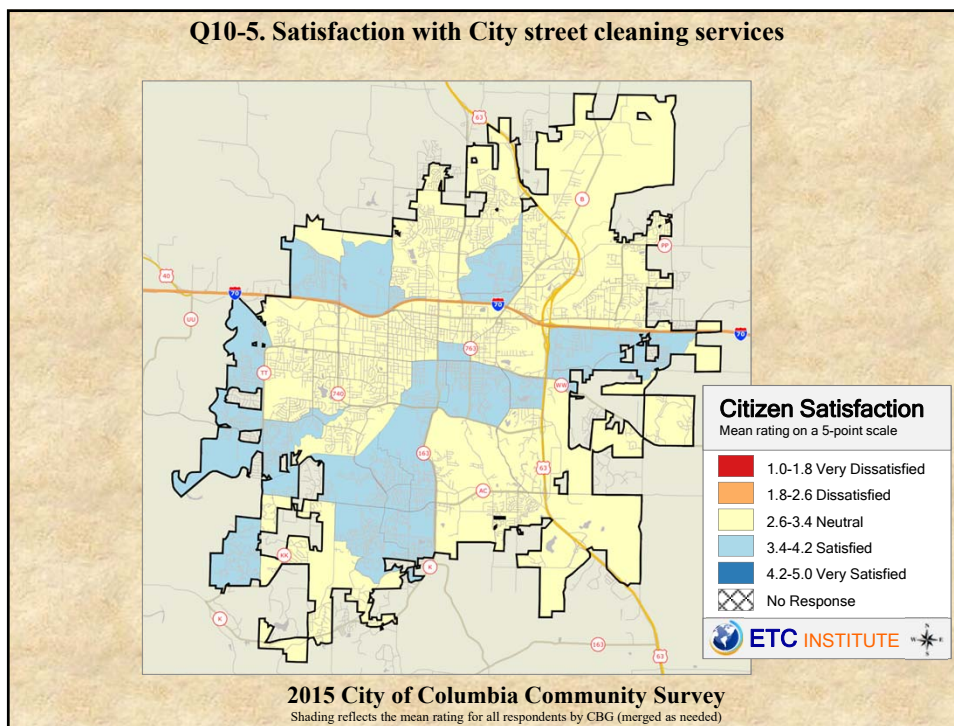


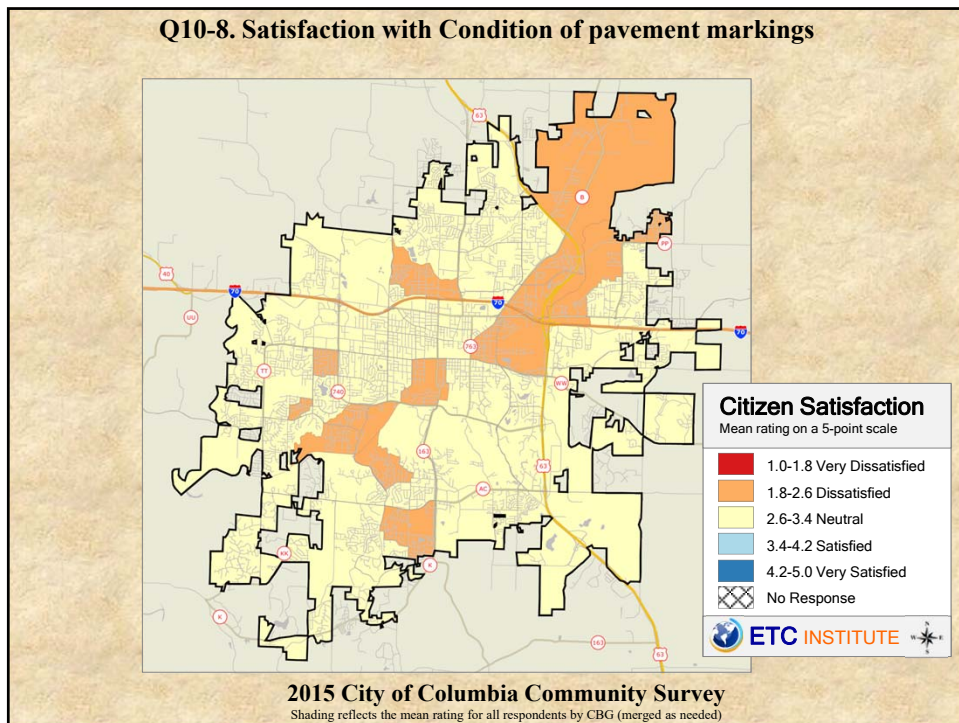
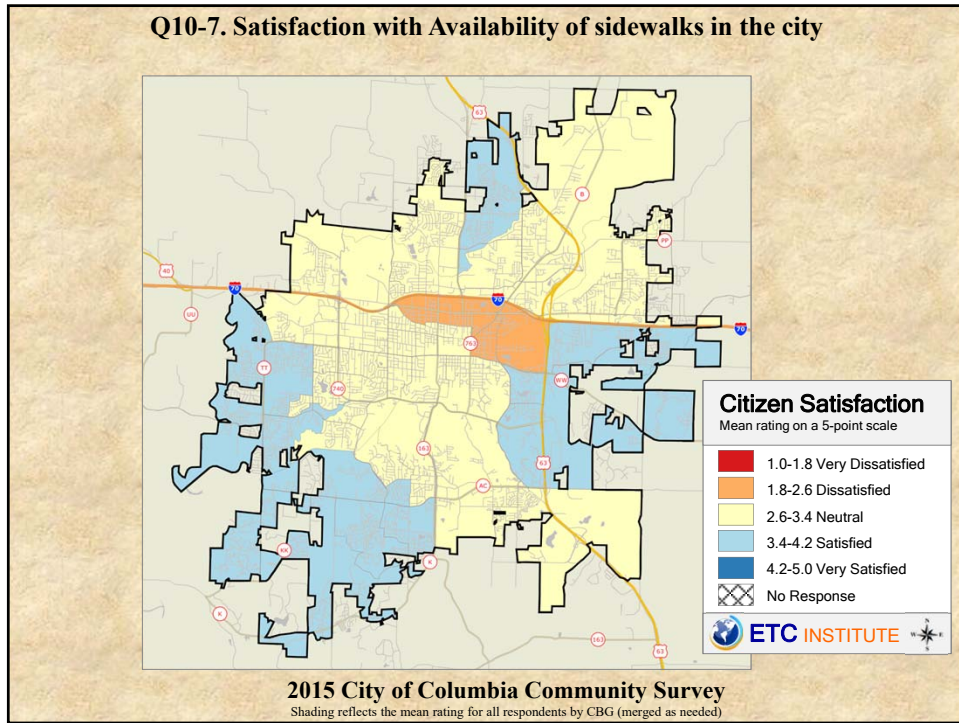
**2015 City of Columbia Community Survey**

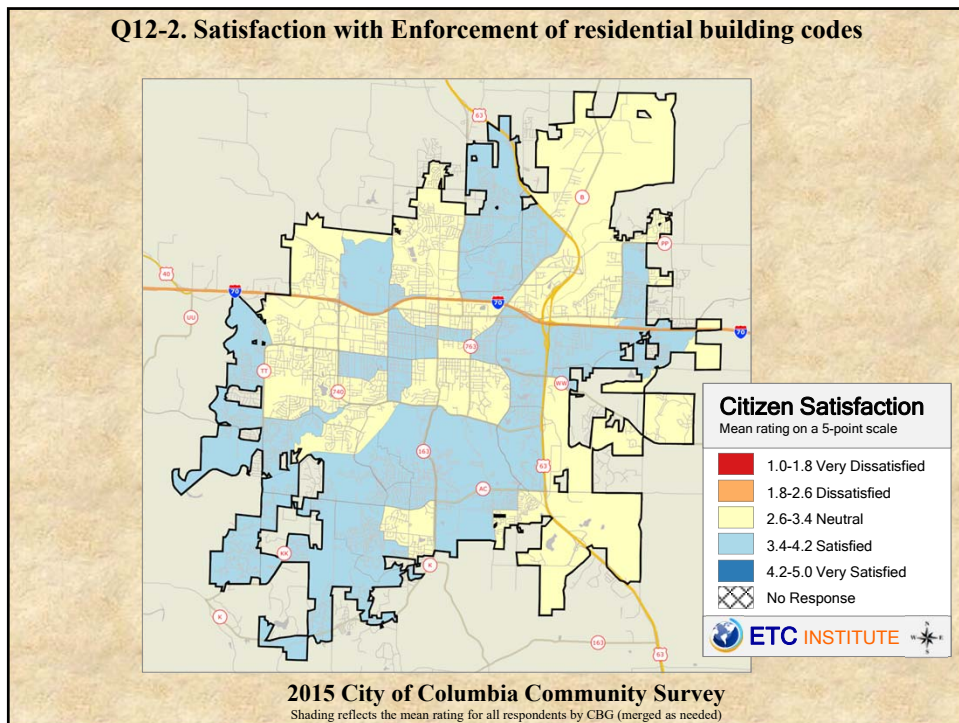
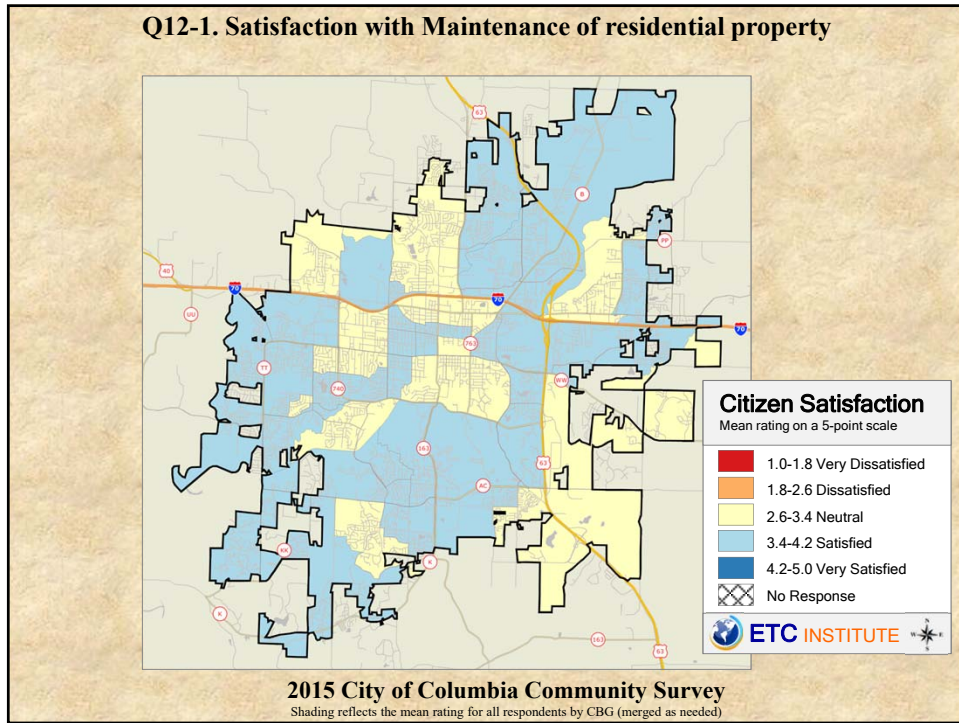
Shading reflects the mean rating for all respondents by CBG (merged as needed)

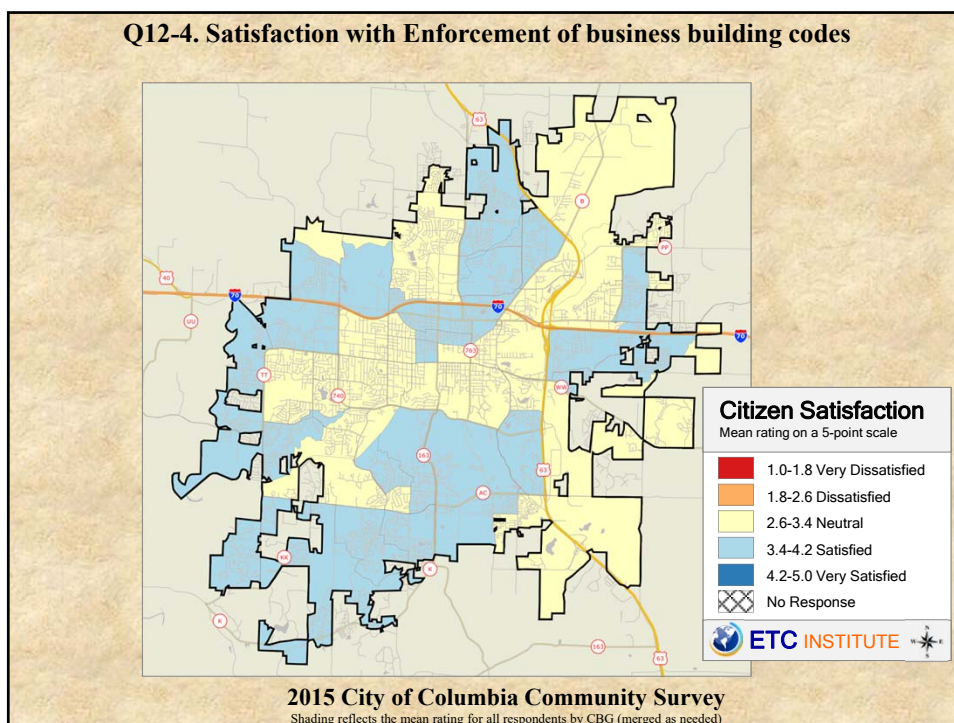
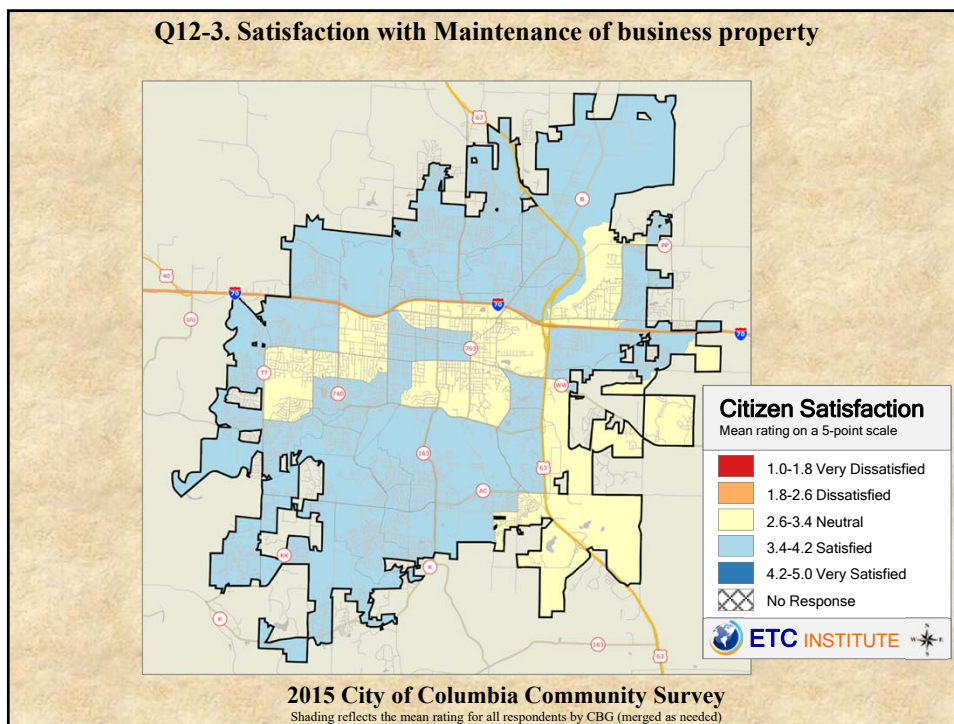


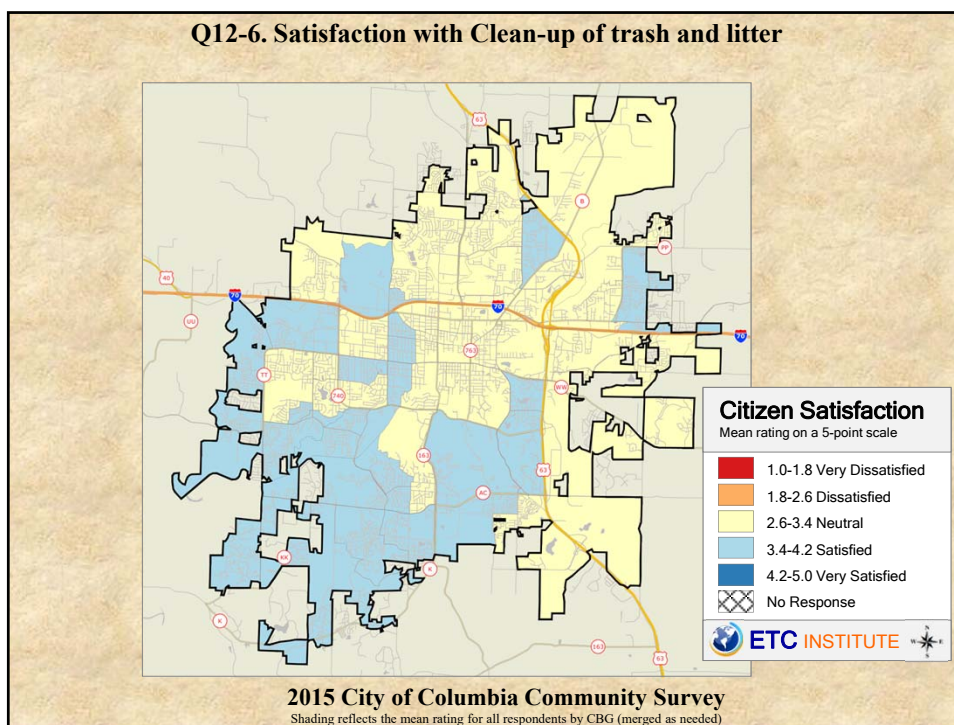
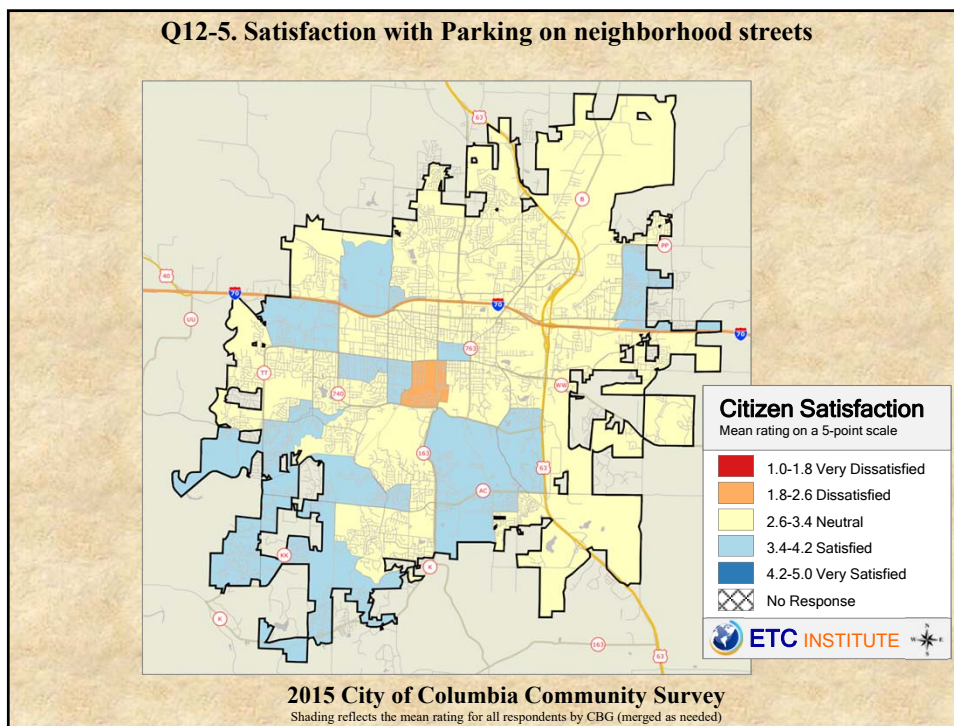


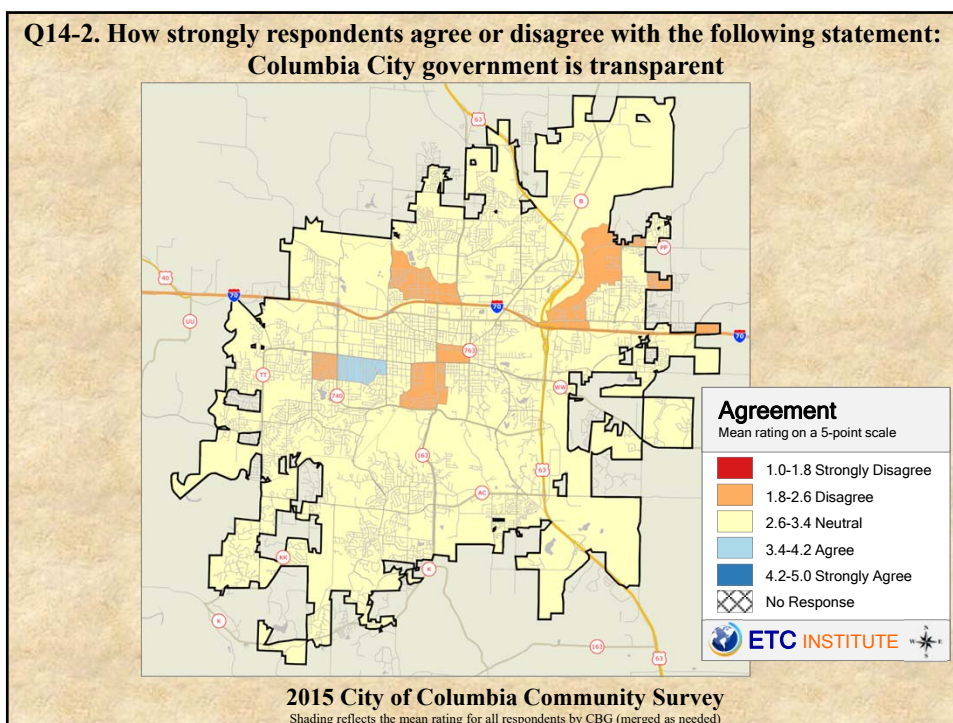
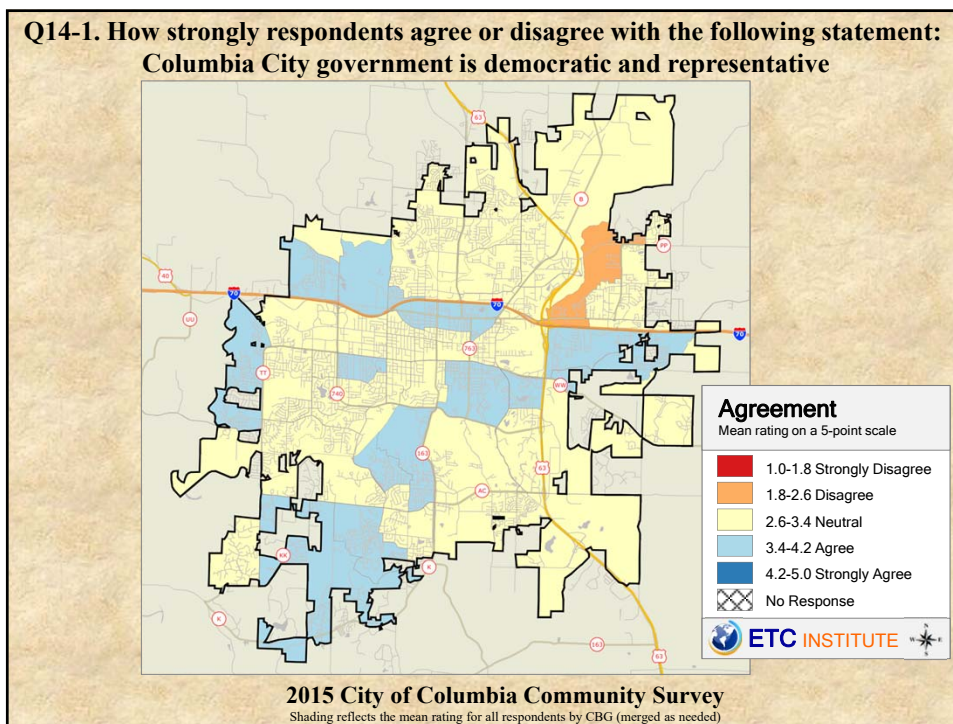


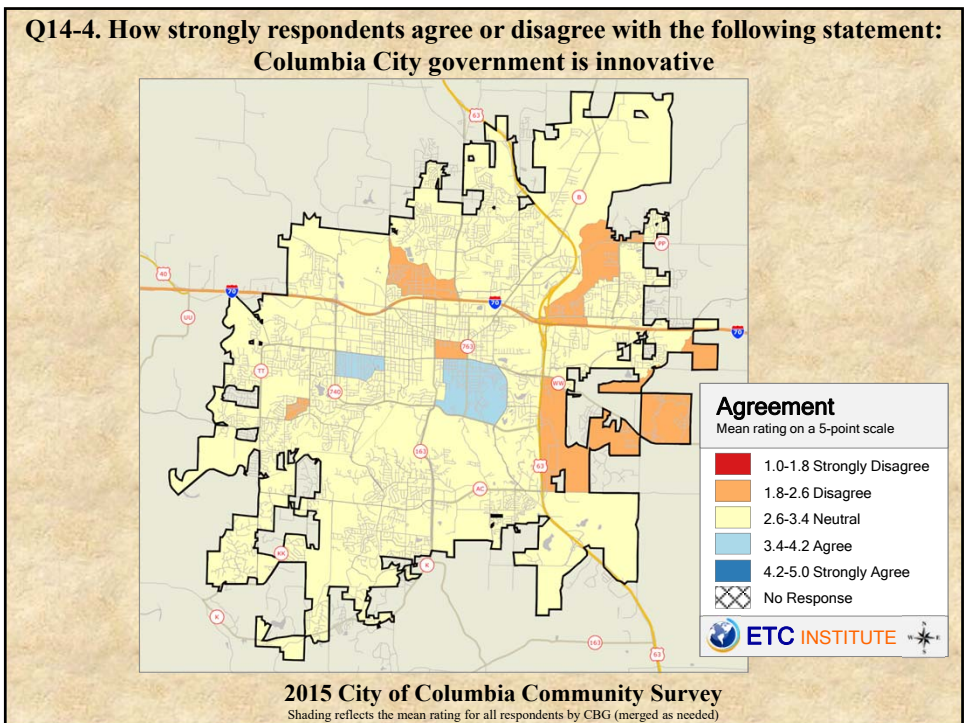
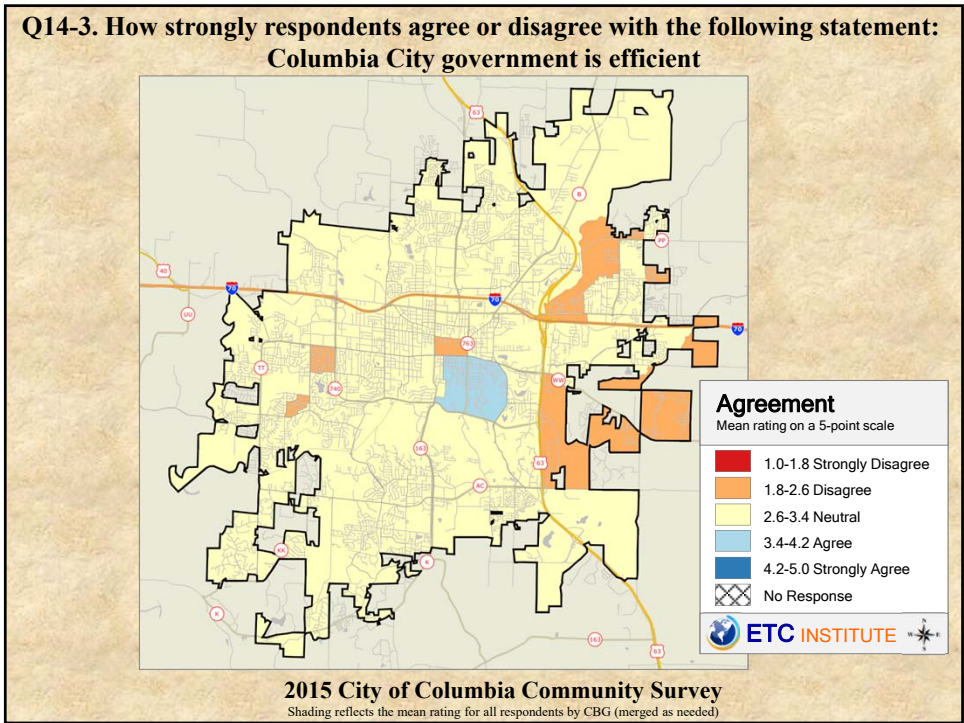


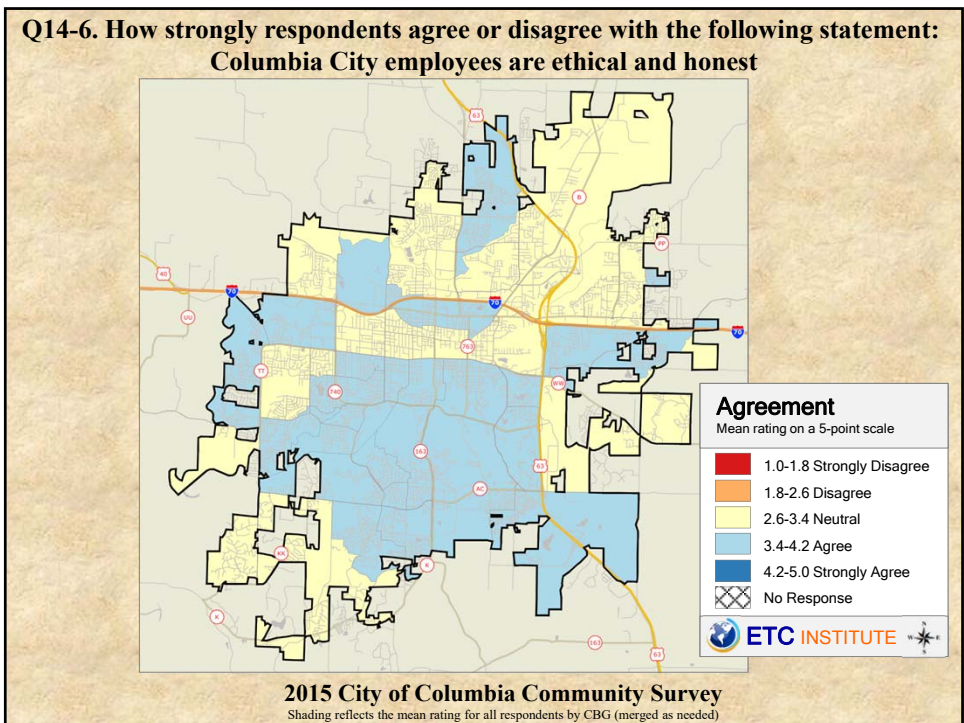
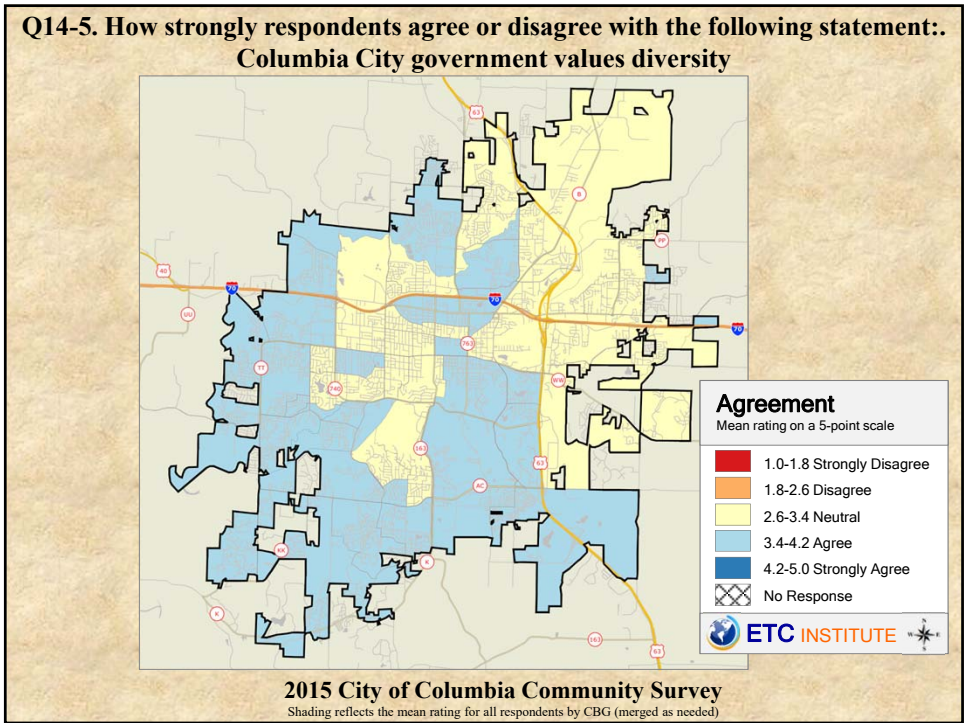




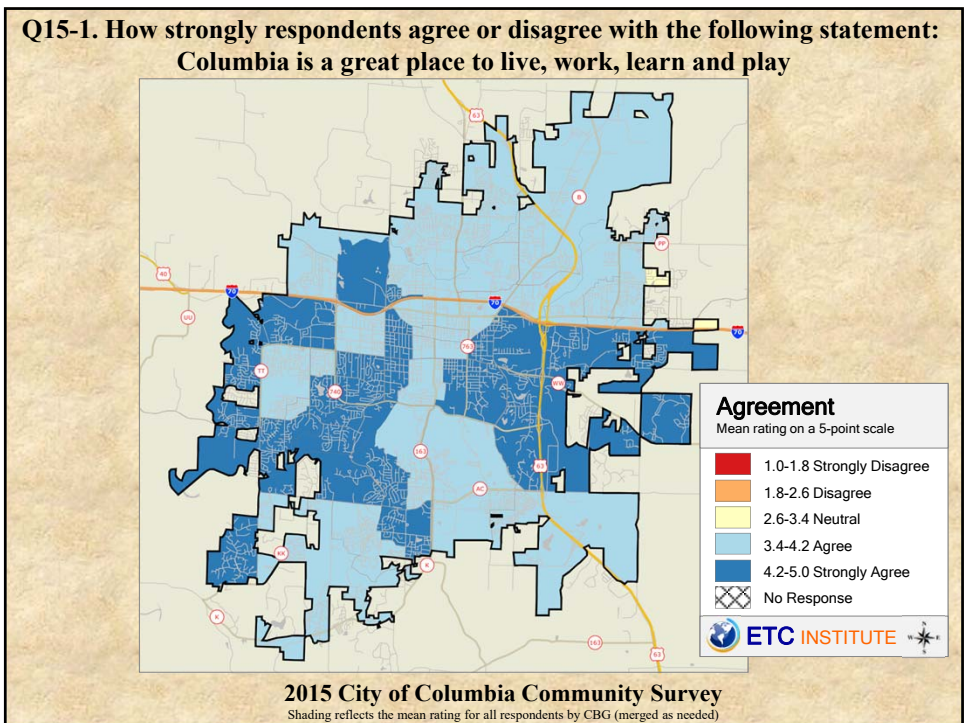
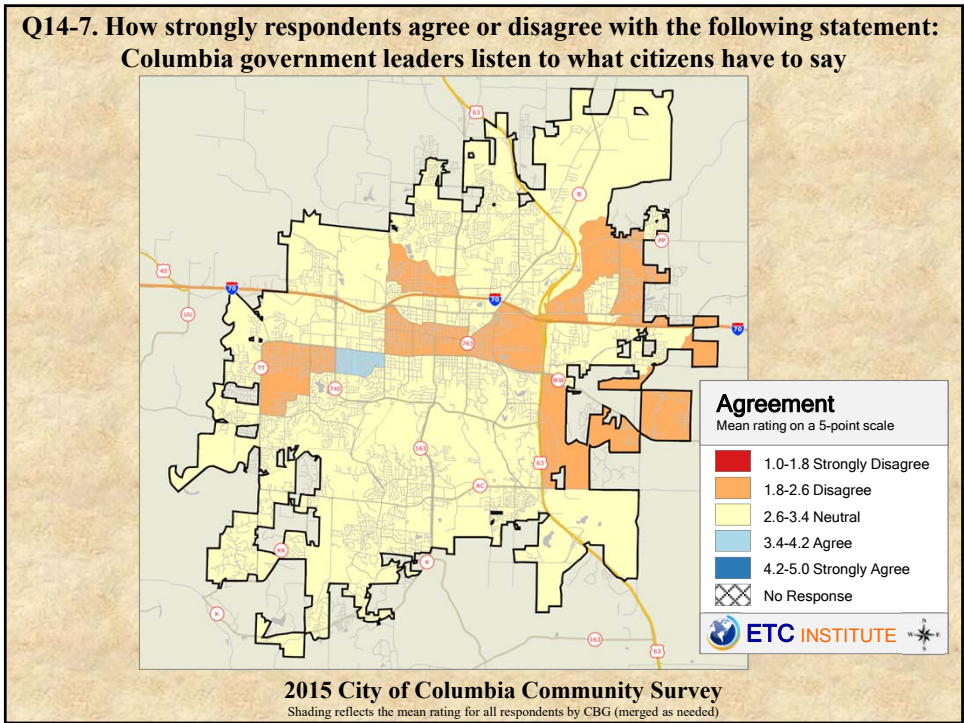


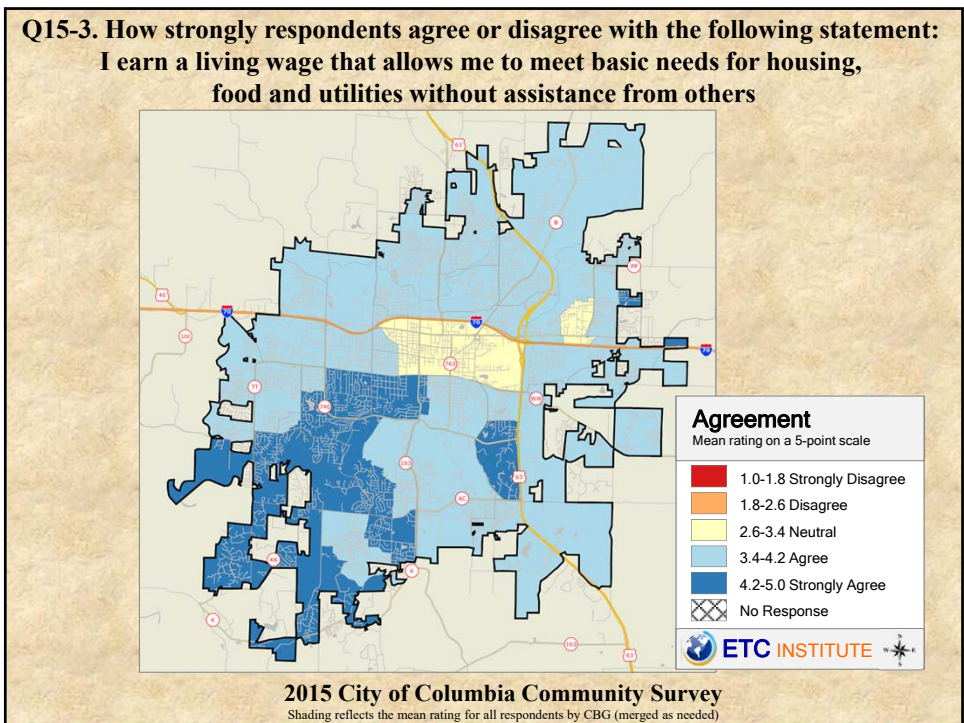
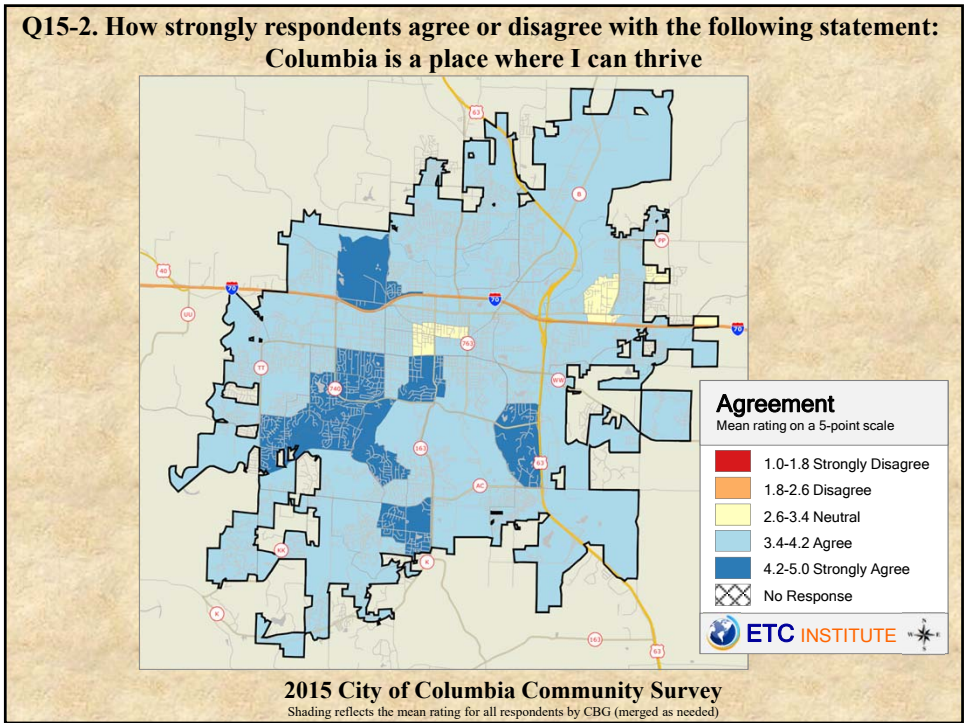


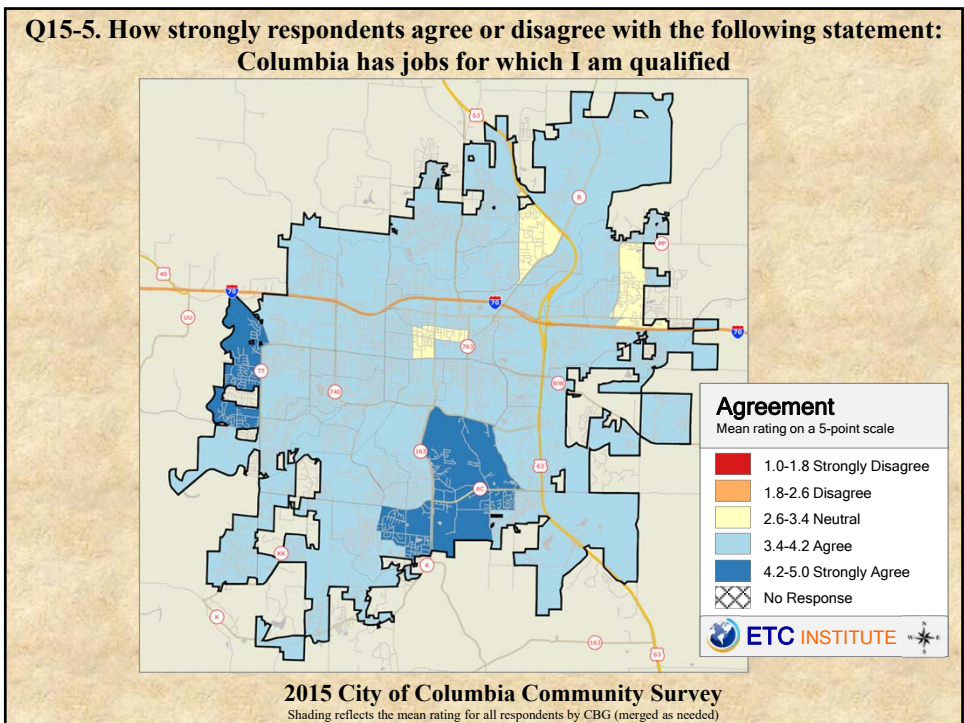
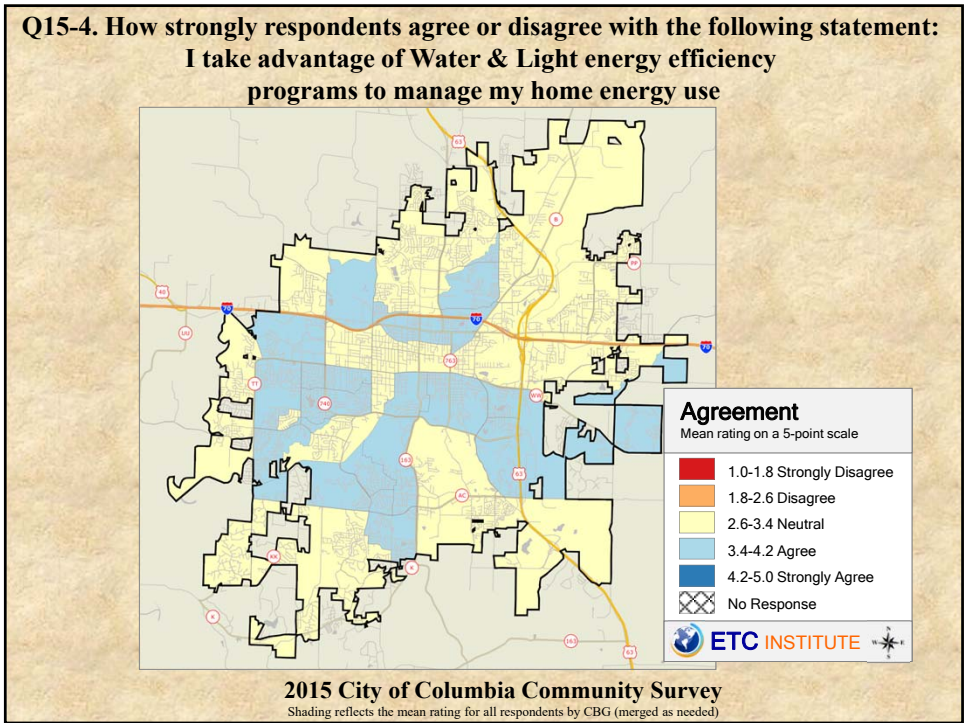


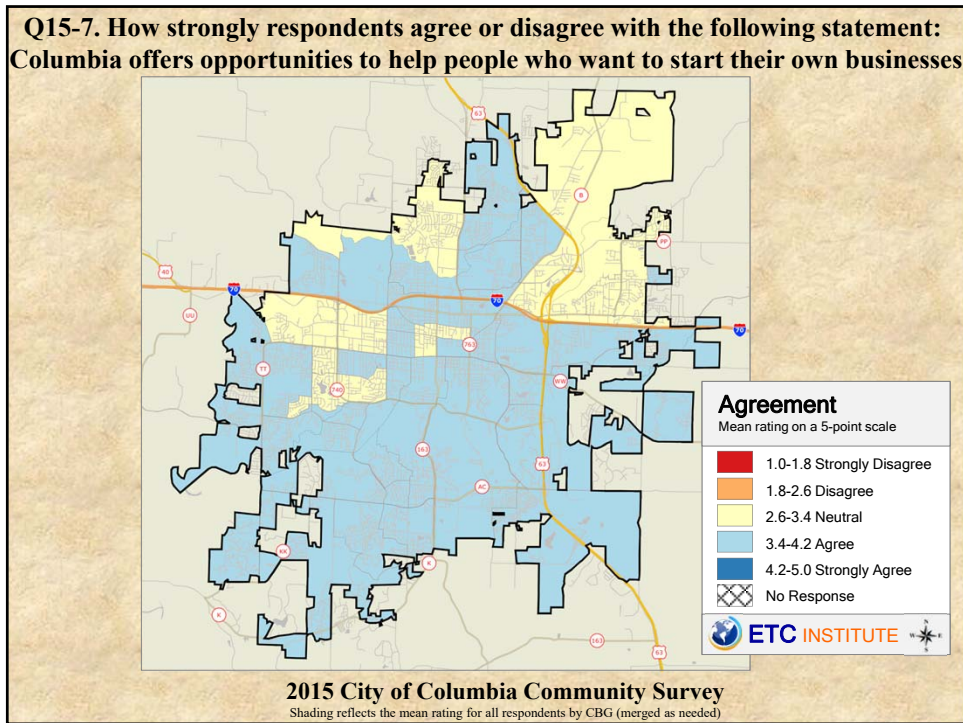
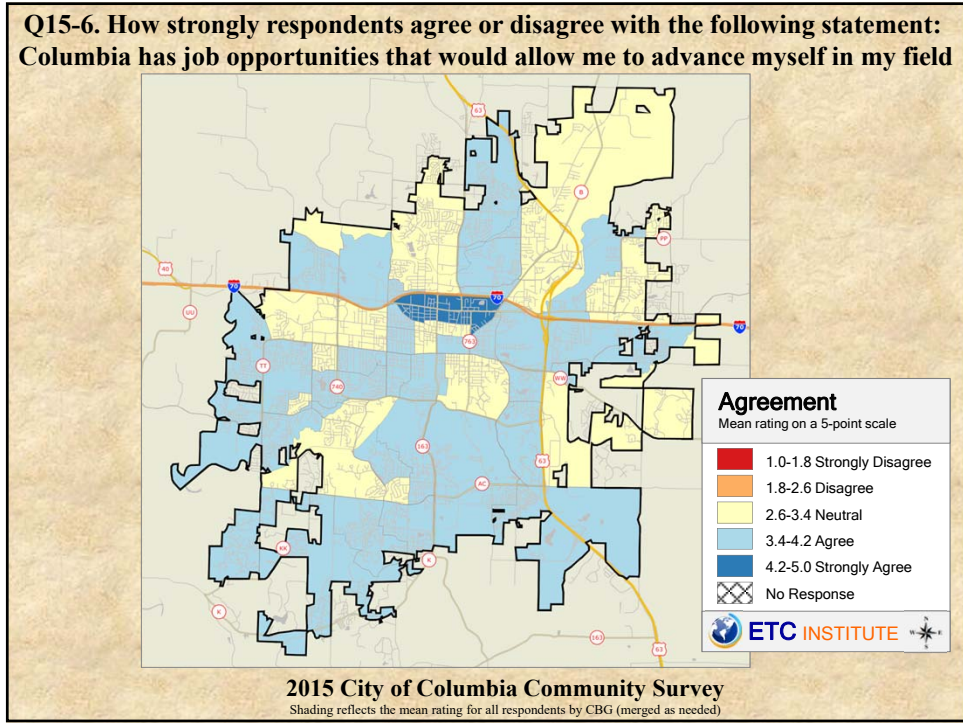


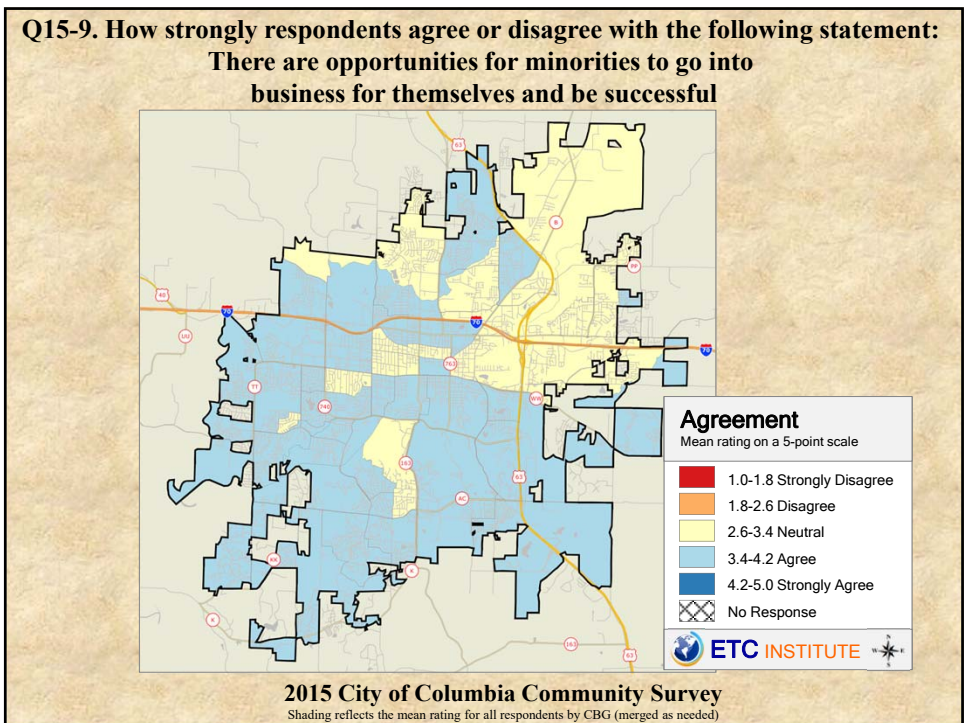
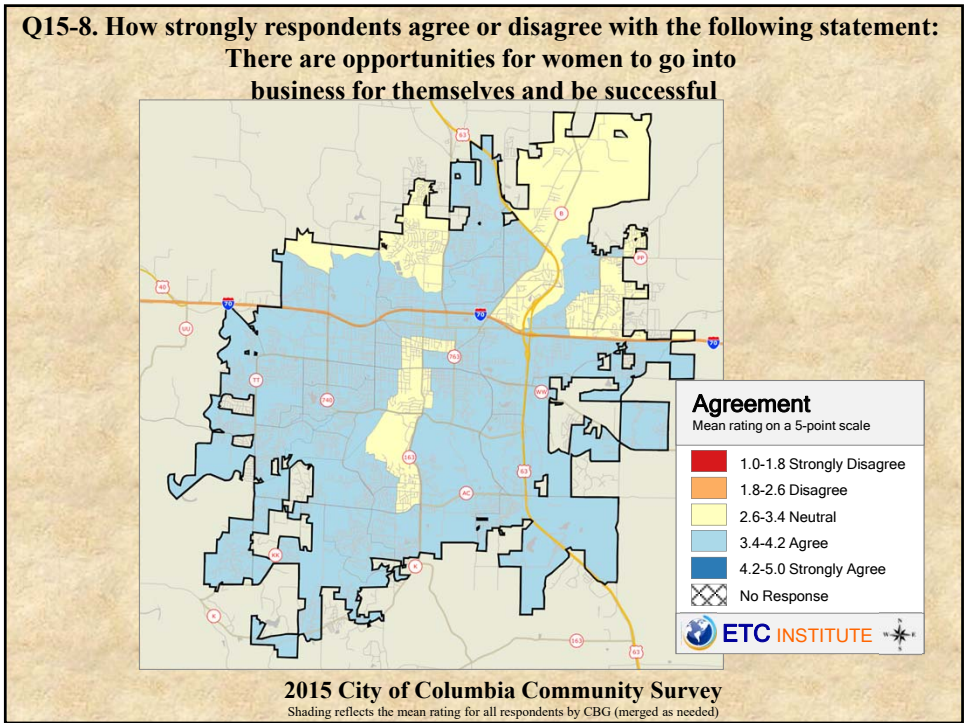


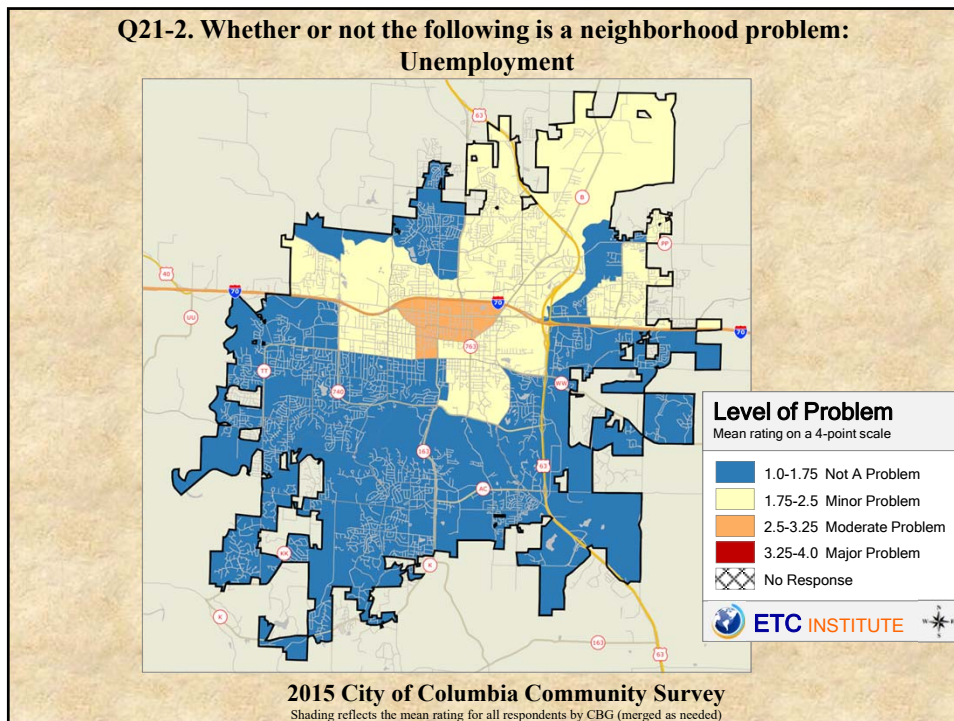
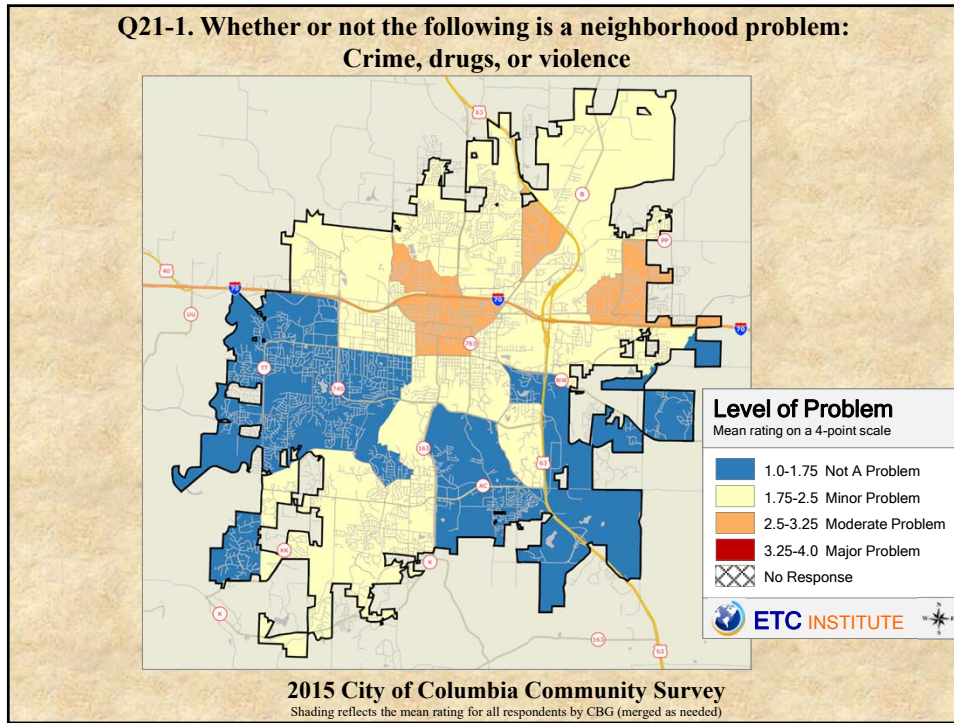


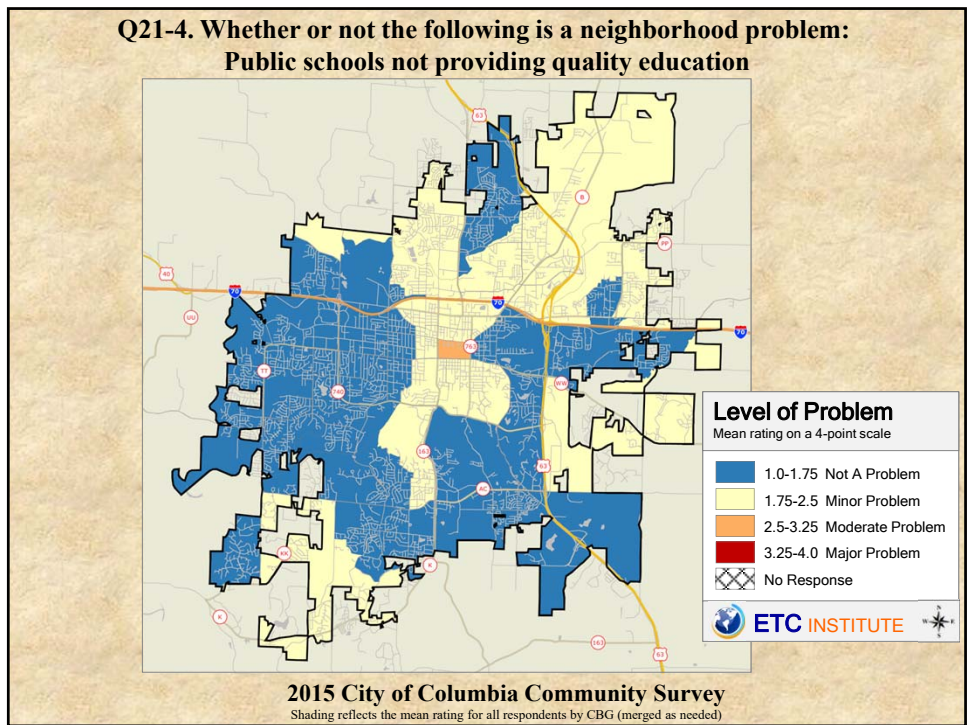
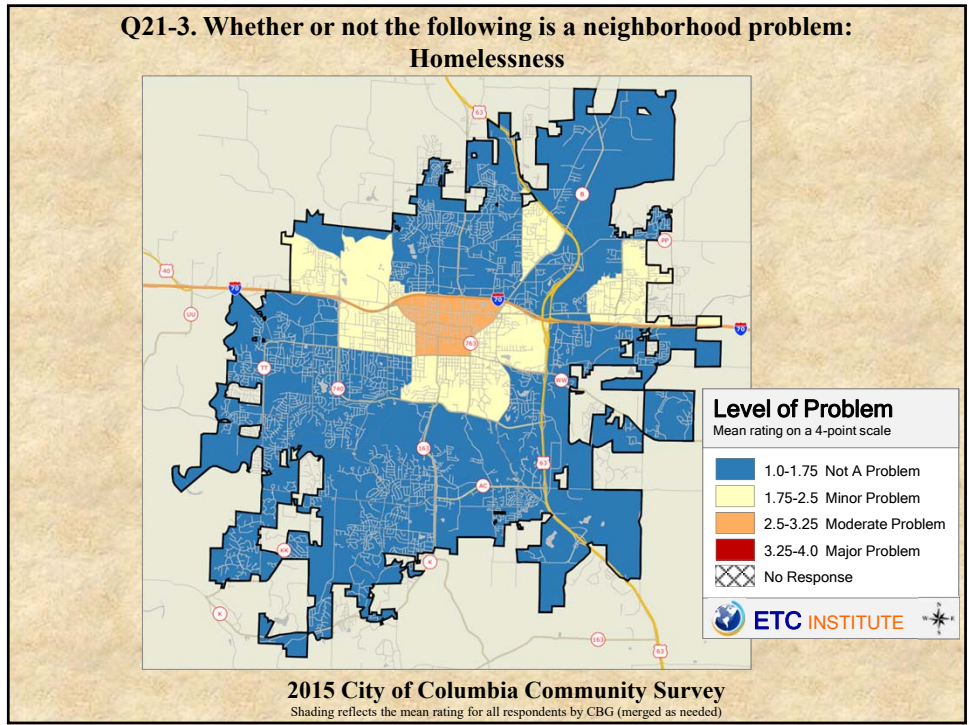


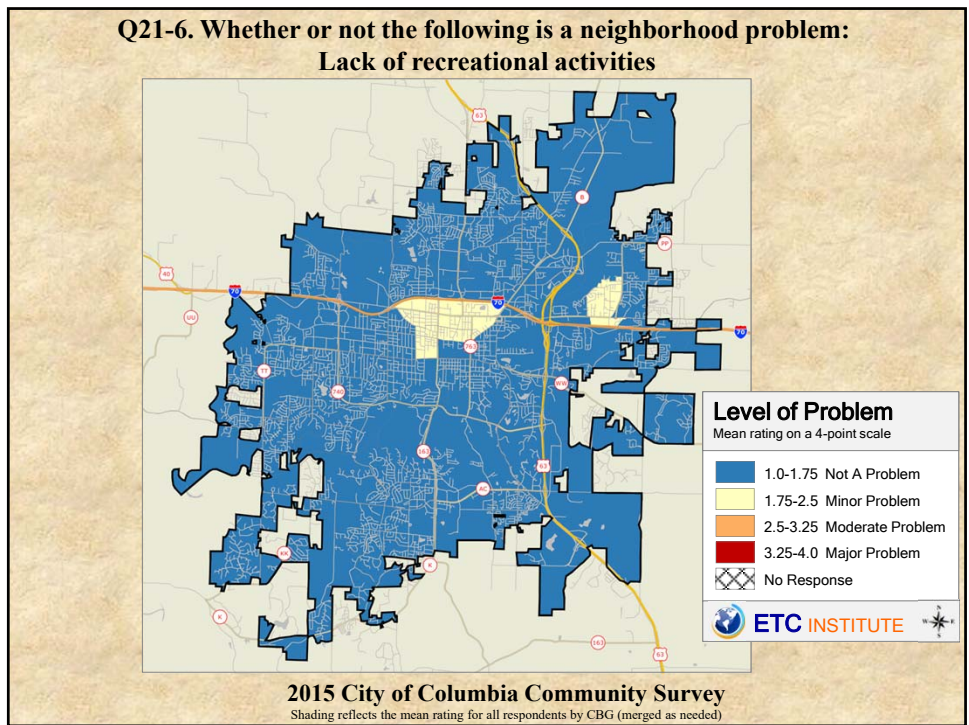
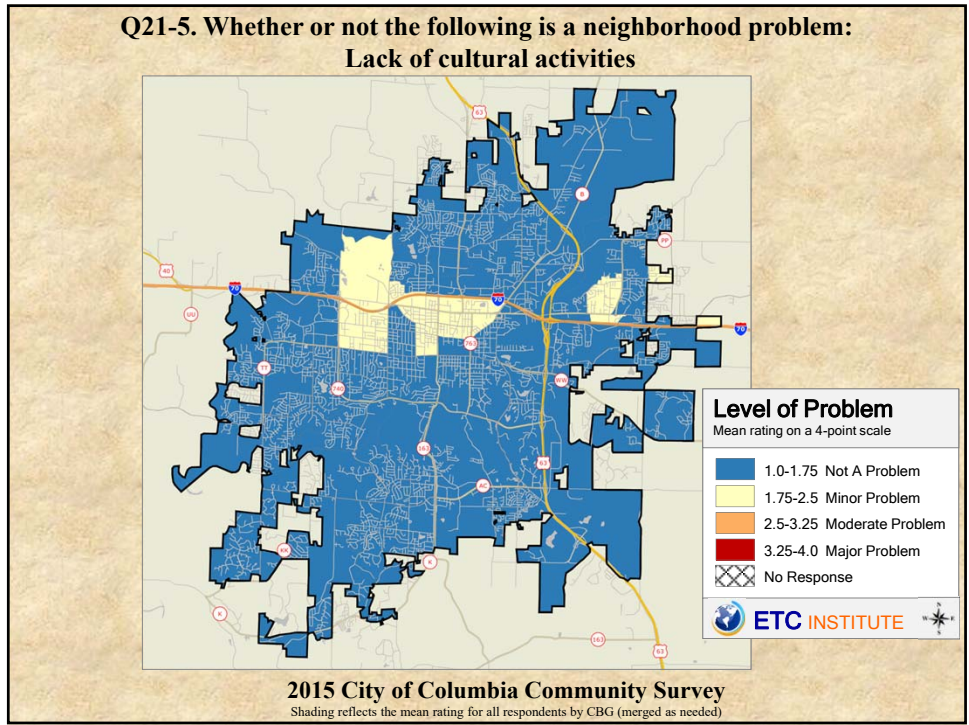




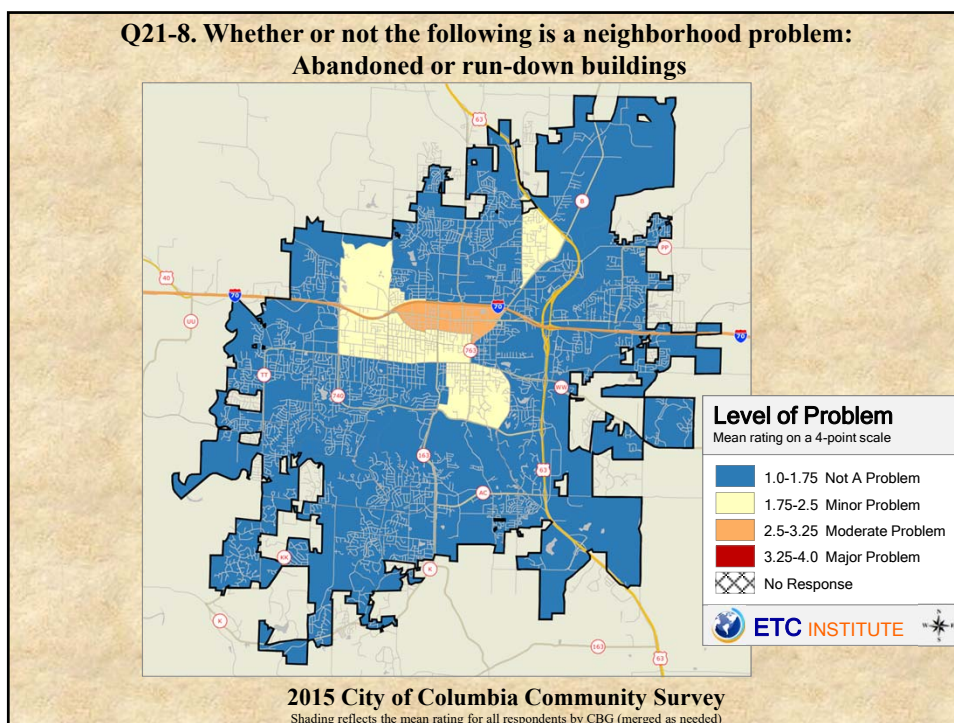
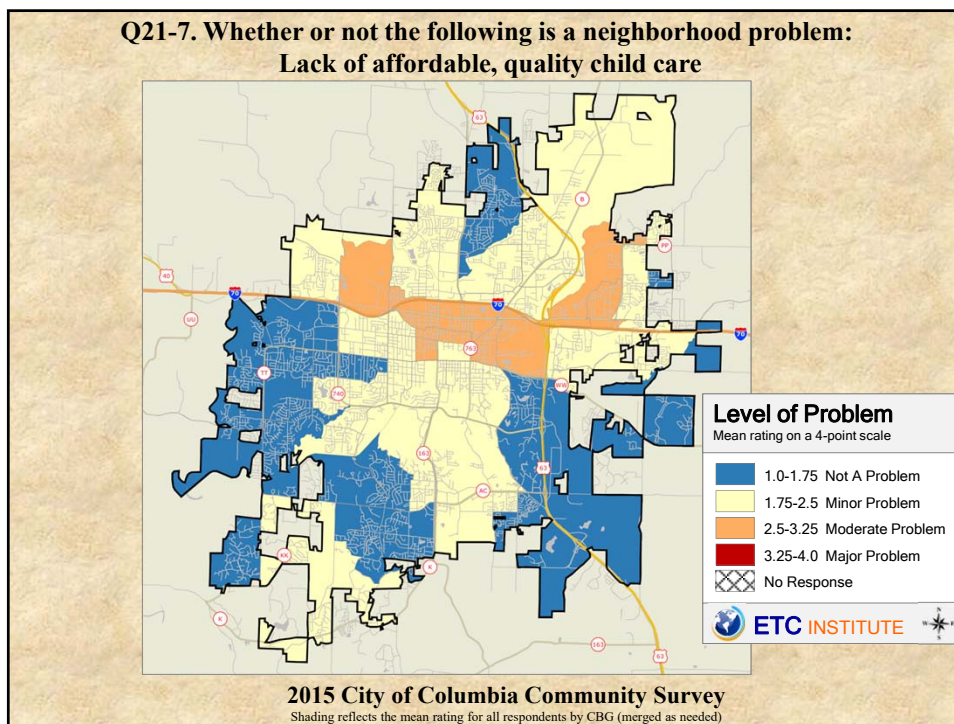


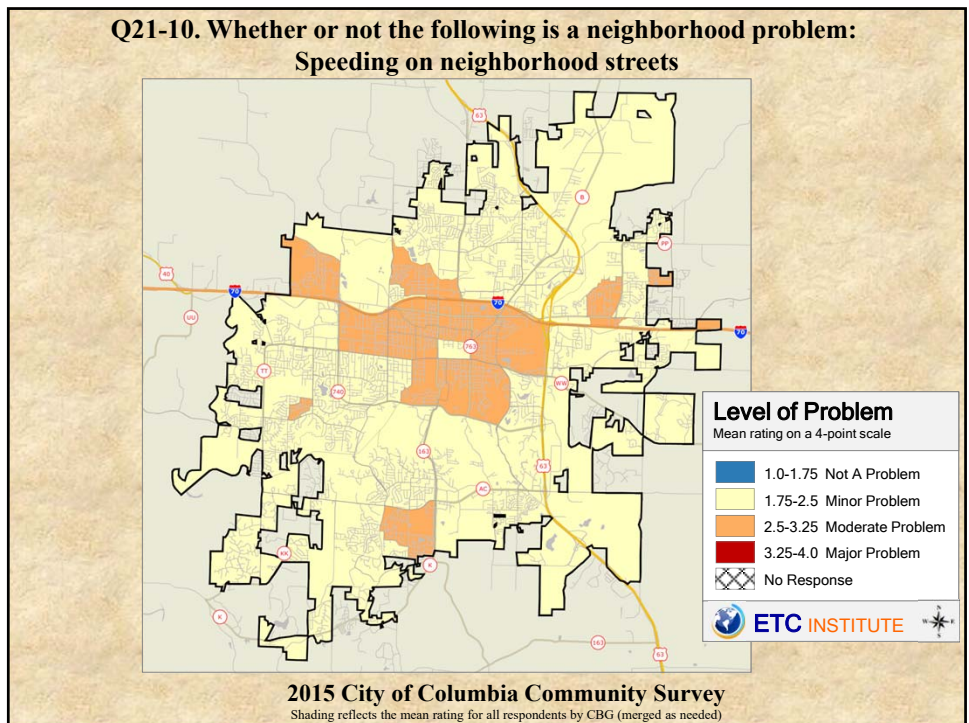
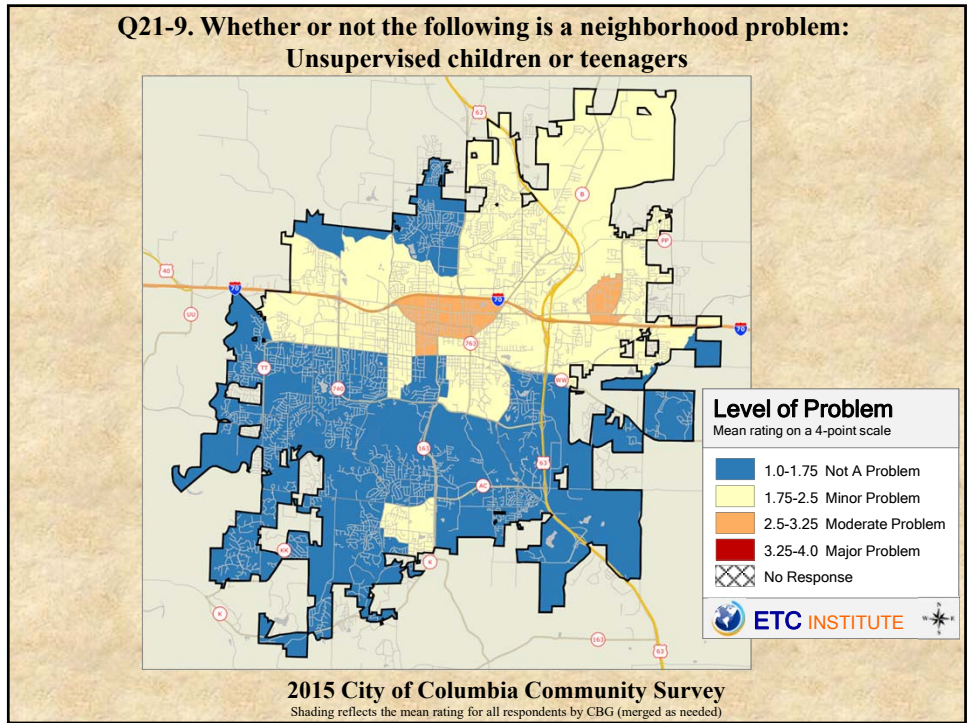


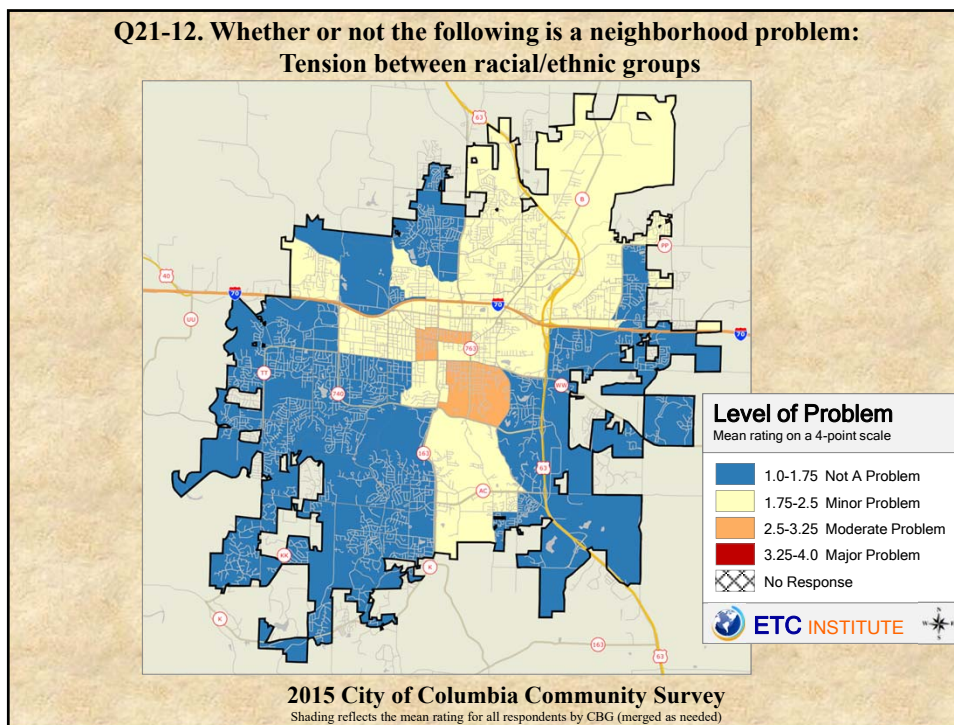
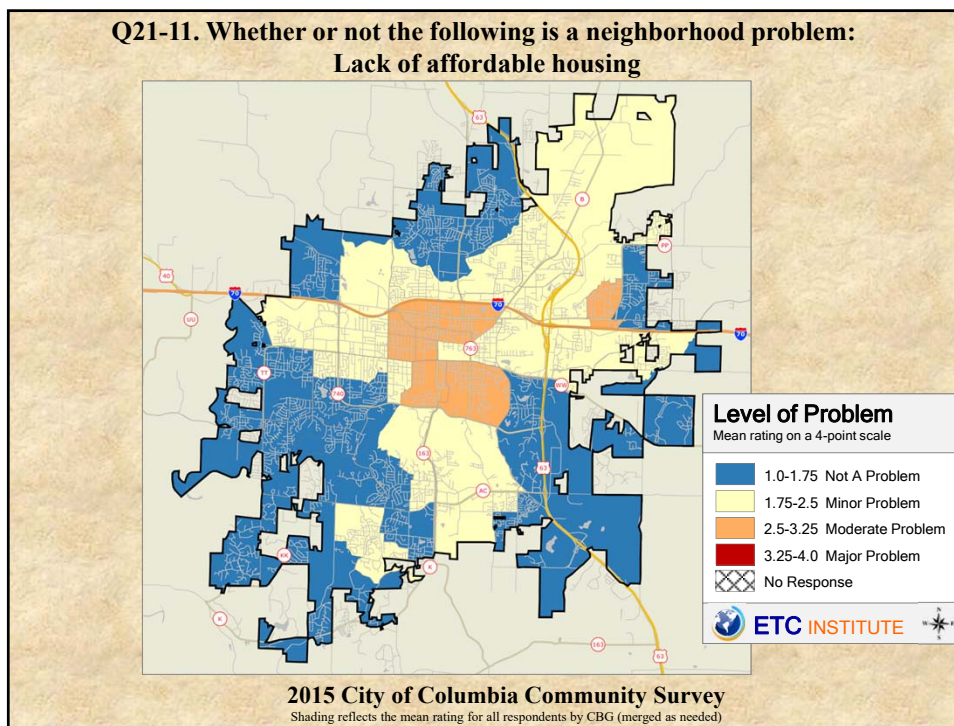


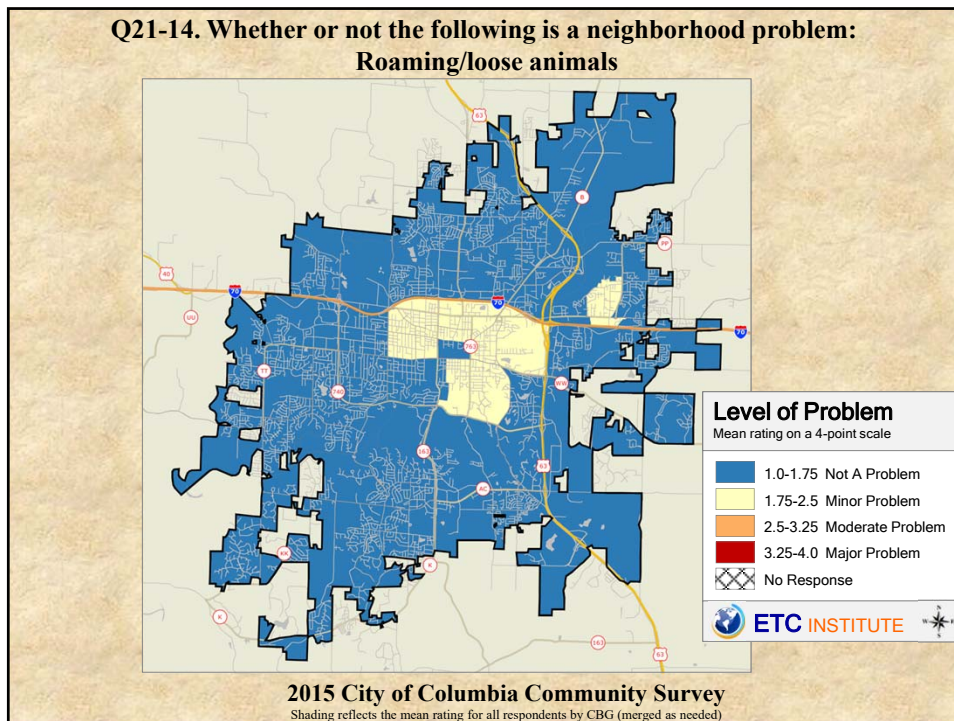
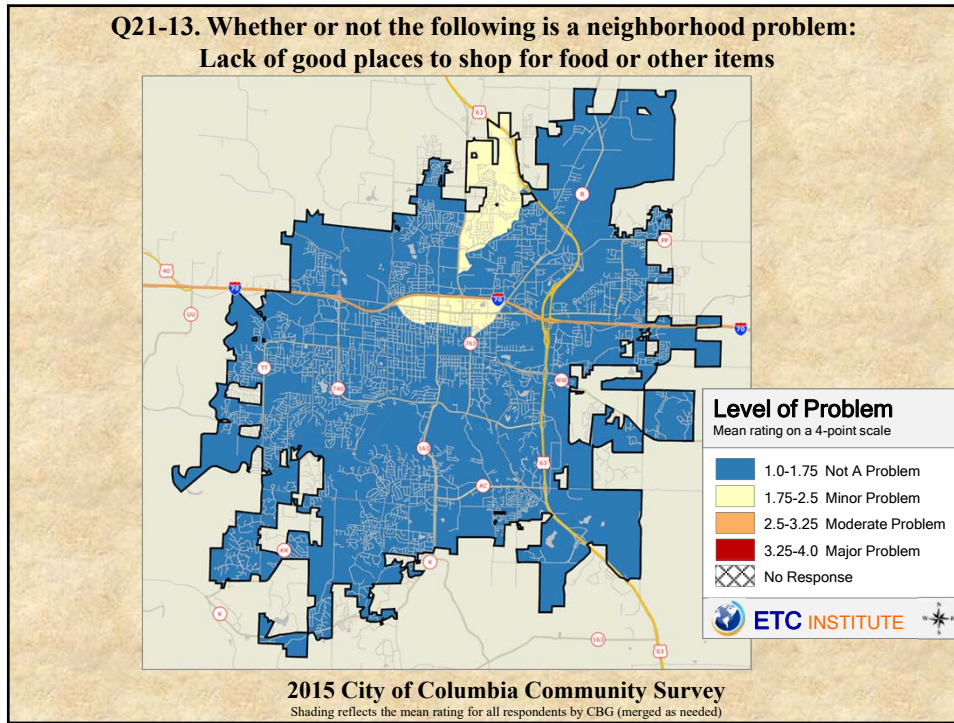


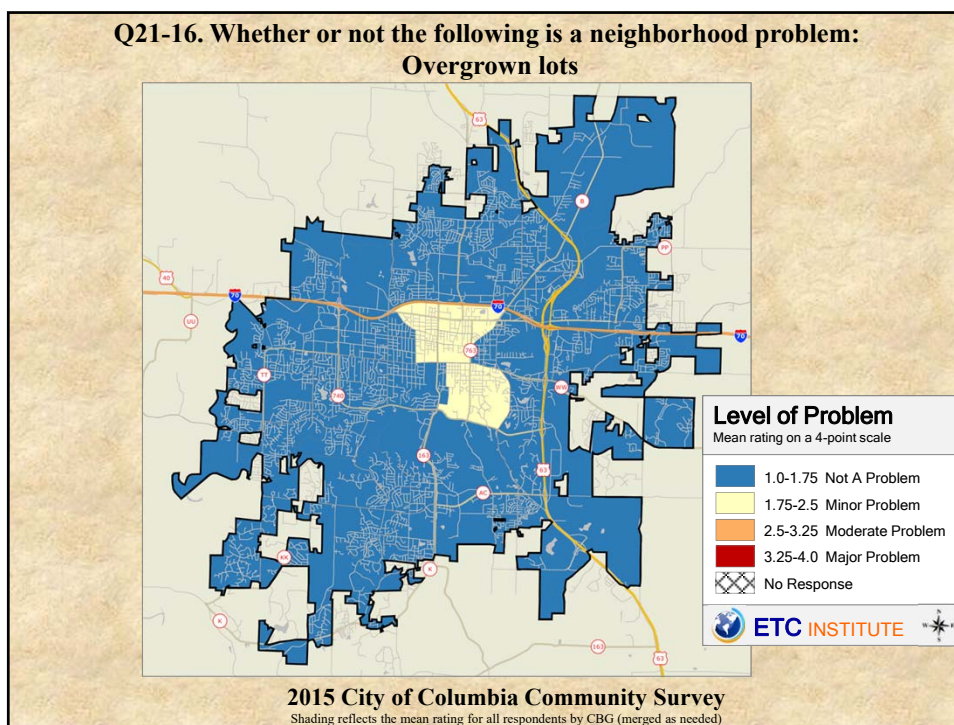
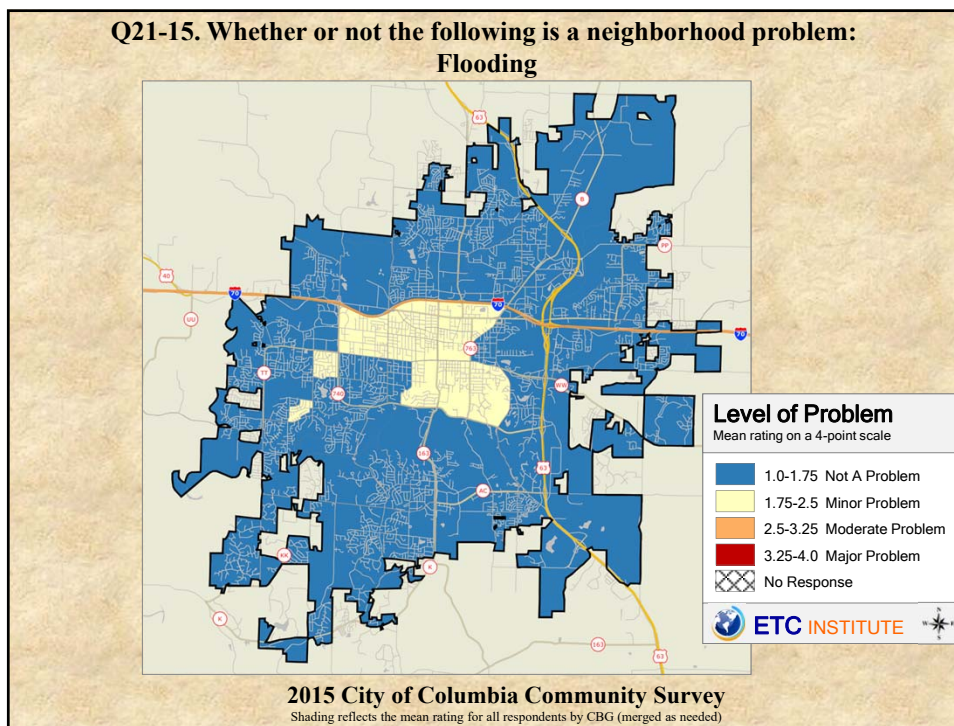


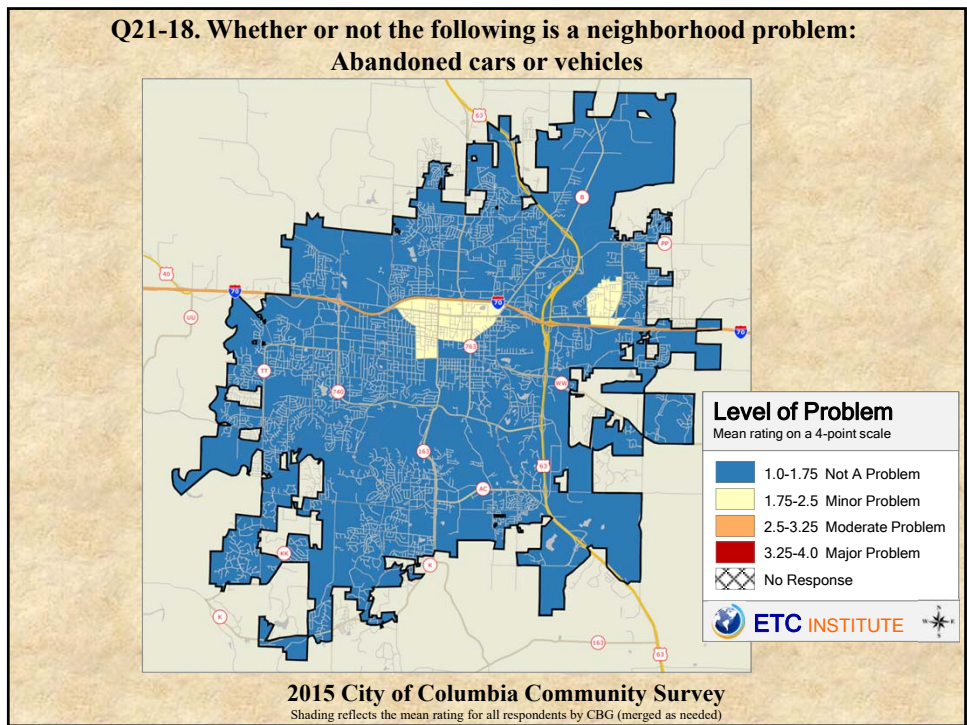
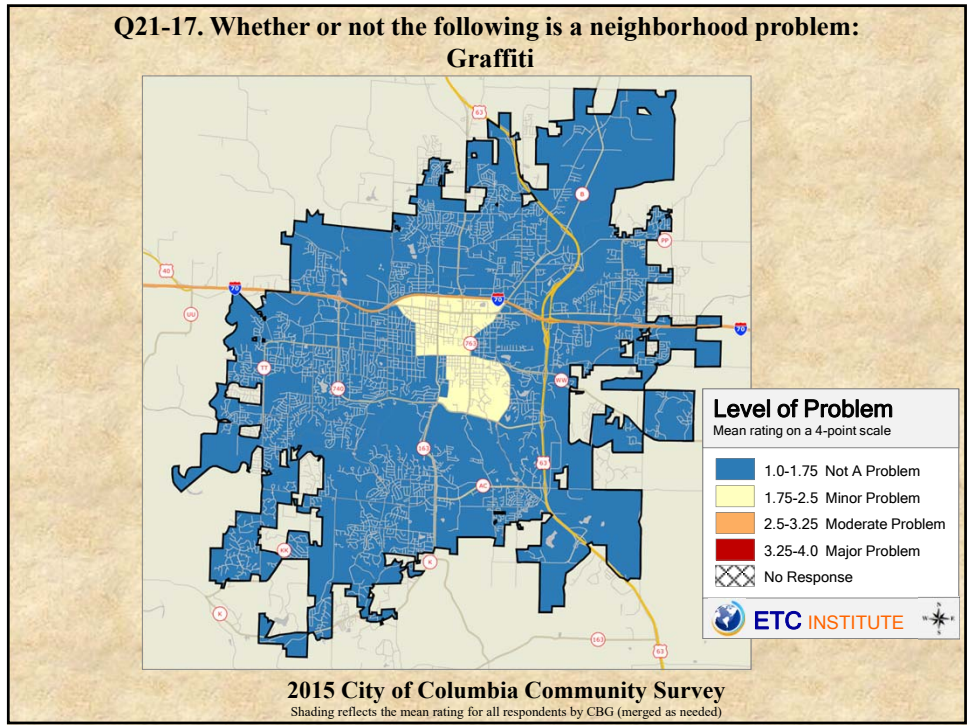


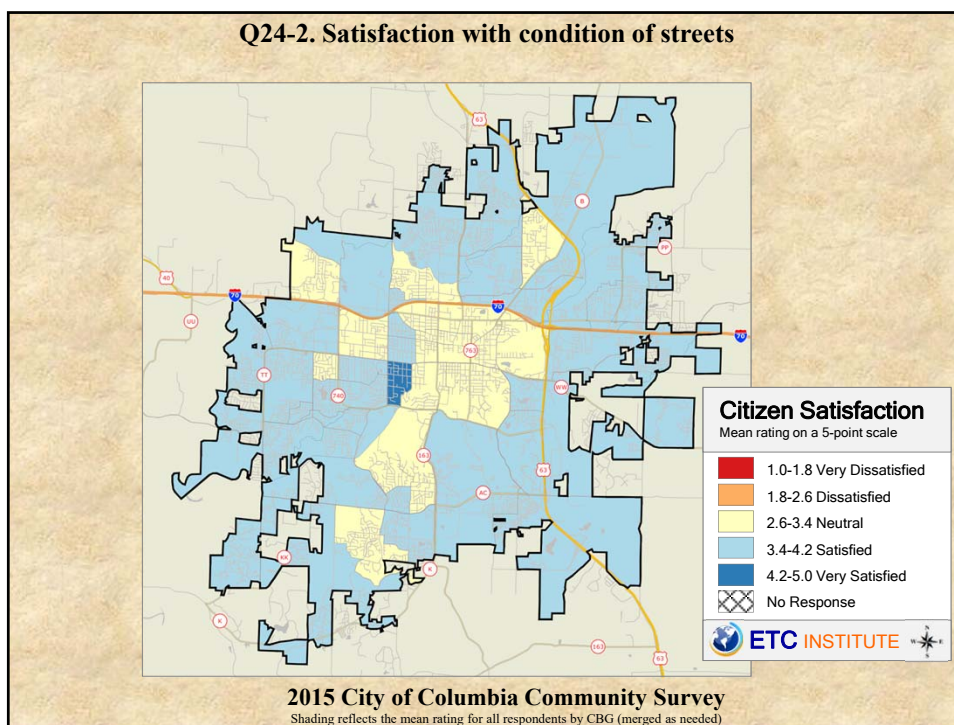
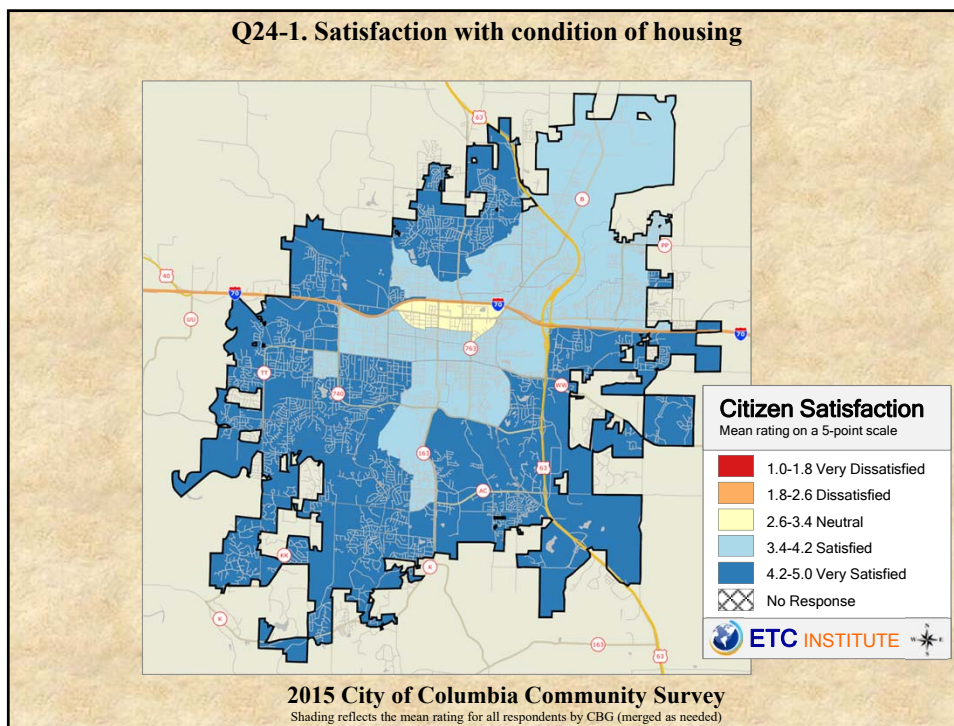


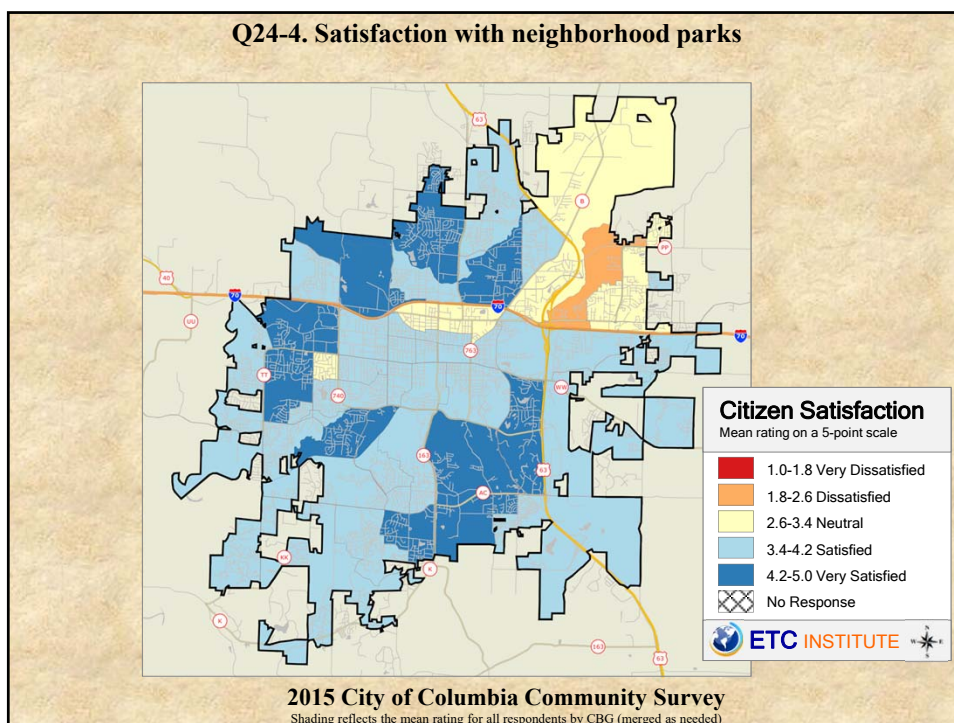
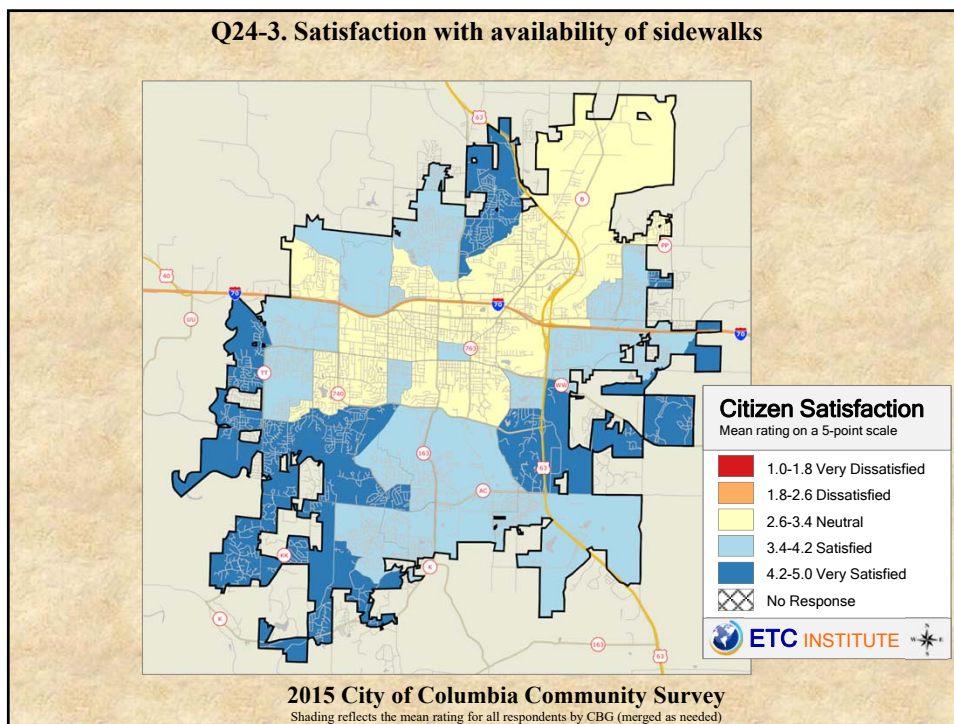






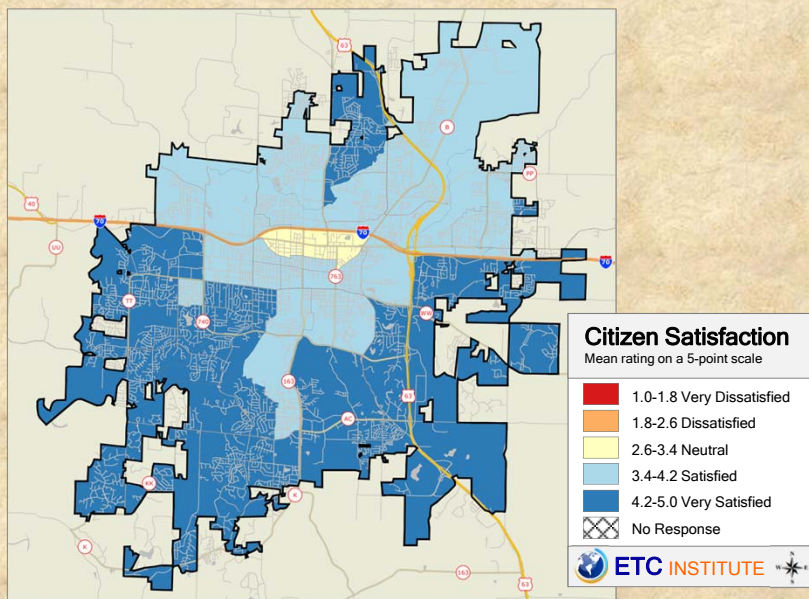








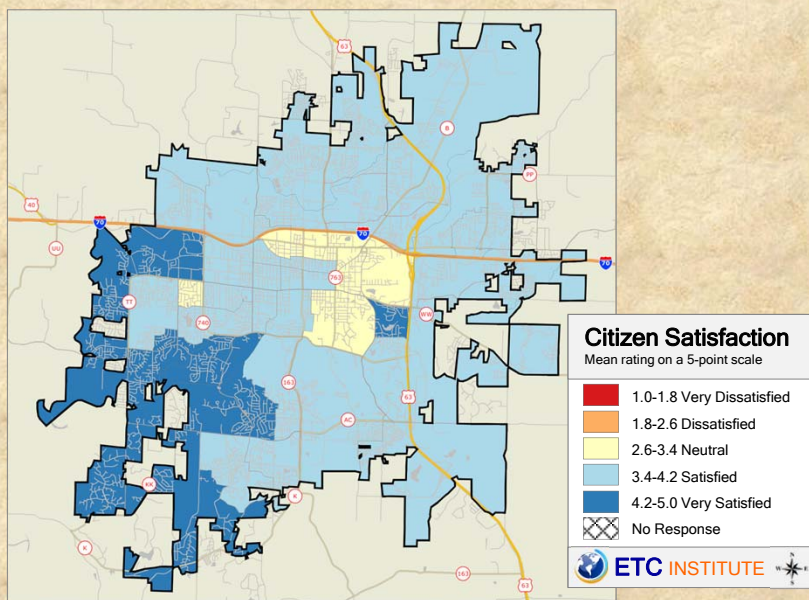
**Q24-5. Satisfaction with overall appearance of your neighborhood**



**2015 City of Columbia Community Survey**

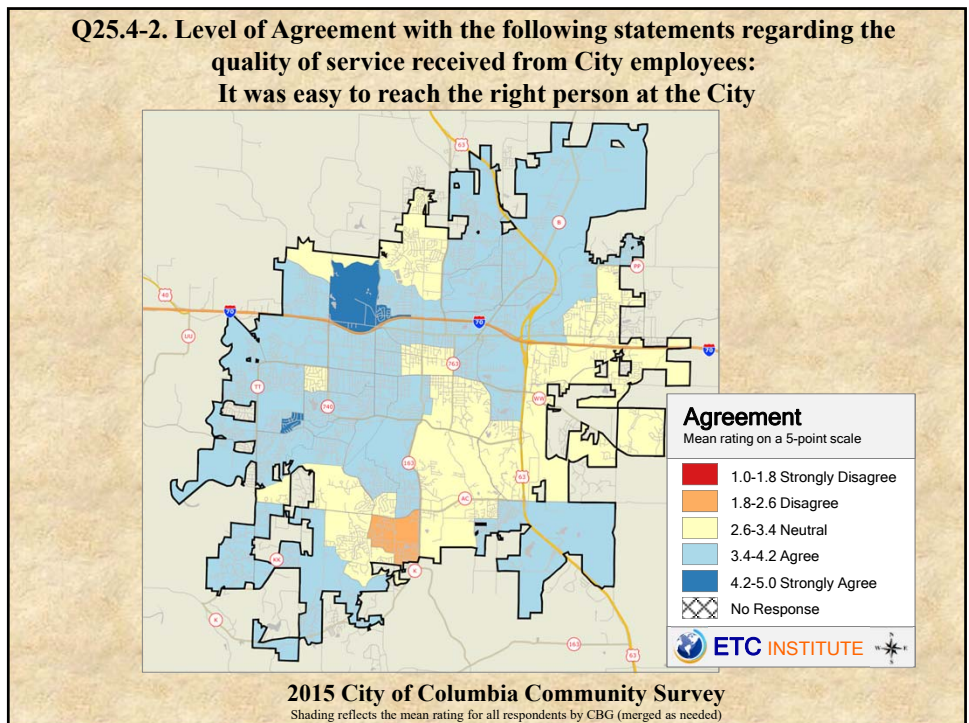
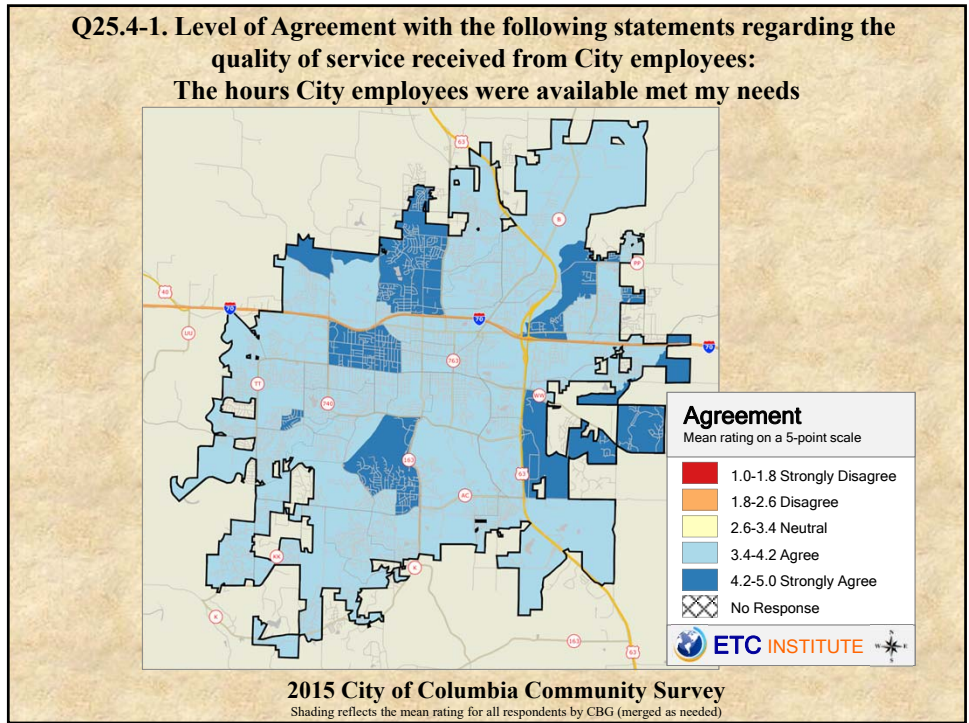
Shading reflects the mean rating for all respondents by CBG (merged as needed)

**Q24-6. Satisfaction with overall quality of City services in your neighborhood**

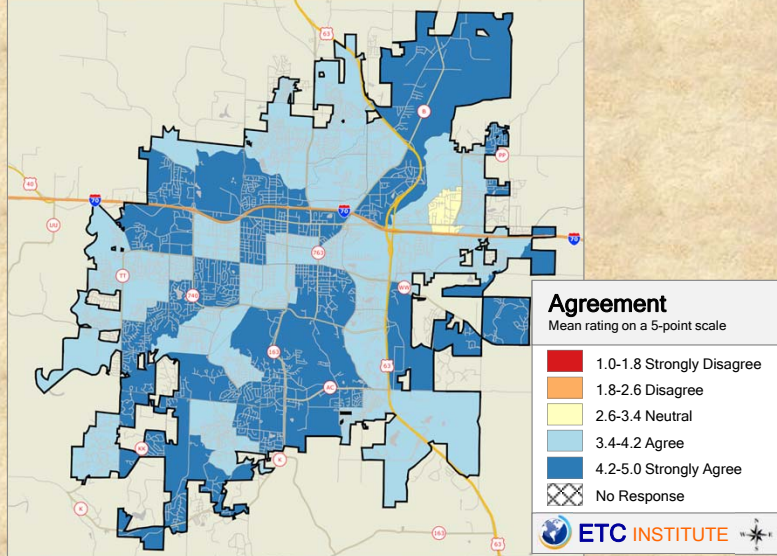


**2015 City of Columbia Community Survey**

Shading reflects the mean rating for all respondents by CBG (merged as needed)

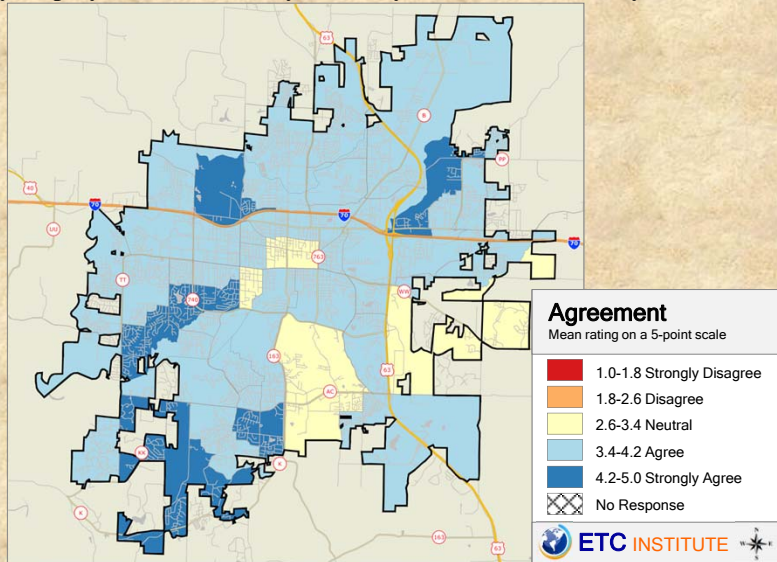


**Q25.4-3. Level of Agreement with the following statements regarding the quality of service received from City employees:  
City employees who helped me were courteous and polite**



**2015 City of Columbia Community Survey**  
Shading reflects the mean rating for all respondents by CBG (merged as needed)

**Q25.4-4. Level of Agreement with the following statements regarding the quality of service received from City employees:  
City employees did what they said they would do in a timely manner**



**2015 City of Columbia Community Survey**  
Shading reflects the mean rating for all respondents by CBG (merged as needed)

