

QUANTITIES

ITEM DESCRIPTION	UNITS	QTY
Mobilization	LS	1
Traffic Control	LS	1
Construction Staking	LS	1
Sawcut & Removal of Exist. Curb & Gutter	LF	59
Sawcut & Removal of Exist. Sidewalk	SY	46
4" Type 5 Aggregate	SY	73
2'-6" Concrete Curb & Gutter	LF	59
6" PCC Sidewalk with Integral Curb & ADA Ramps	SF	438
Detectable Warning Panels	SF	40
Type "C" Concrete Base	CY	1.76
6 ft. Top Mount Post (Powder Coated Black)	EA	4
Audible Push Button with Mountings	EA	8
APS Central Control Unit	EA	1
Conduit, 3 inch, Trench	LF	10
Conduit, 3 inch, Pushed	LF	27
Cable, 2c#12	LF	160
Cable, 5c#12	LF	160
Ped. Signal Info, Signage with Mountings (MUTCD R10-3E)	SF	8
Pavement Marking- 6" White Preformed Thermoplastic	LF	703
Gutter Buddies	EA	3
Linear Grading	LF	100
Seeding and Mulching	LS	1

POWER SUPPLY IS LOCATED AT THE NORTHWEST CORNER OF RTE.763 AND SMILEY LANE.

NEW AUDIBLE PUSH BUTTON POST LOCATIONS

POST #	NO. OF AUDIBLE PUSH BUTTONS	PED. SIGNAL INFO. SIGNAGE LOCATION	POST	NORTHING	EASTING
1	1	1	EXISTING	1150484.30	1690557.34
3	1	1	EXISTING	1150549.85	1690452.18
5	1	1	6' TALL (PROP.)	1150478.08	1690545.21
6	2	2	6' TALL (PROP.)	1150466.48	1690448.10
7	1	1	6' TALL (PROP.)	1150554.63	1690463.97
8	2	2	6' TALL (PROP.)	1150561.42	1690565.84

EXIST. COUNTDOWN PED. SIGNAL POST LOCATIONS (REMAIN IN PLACE)

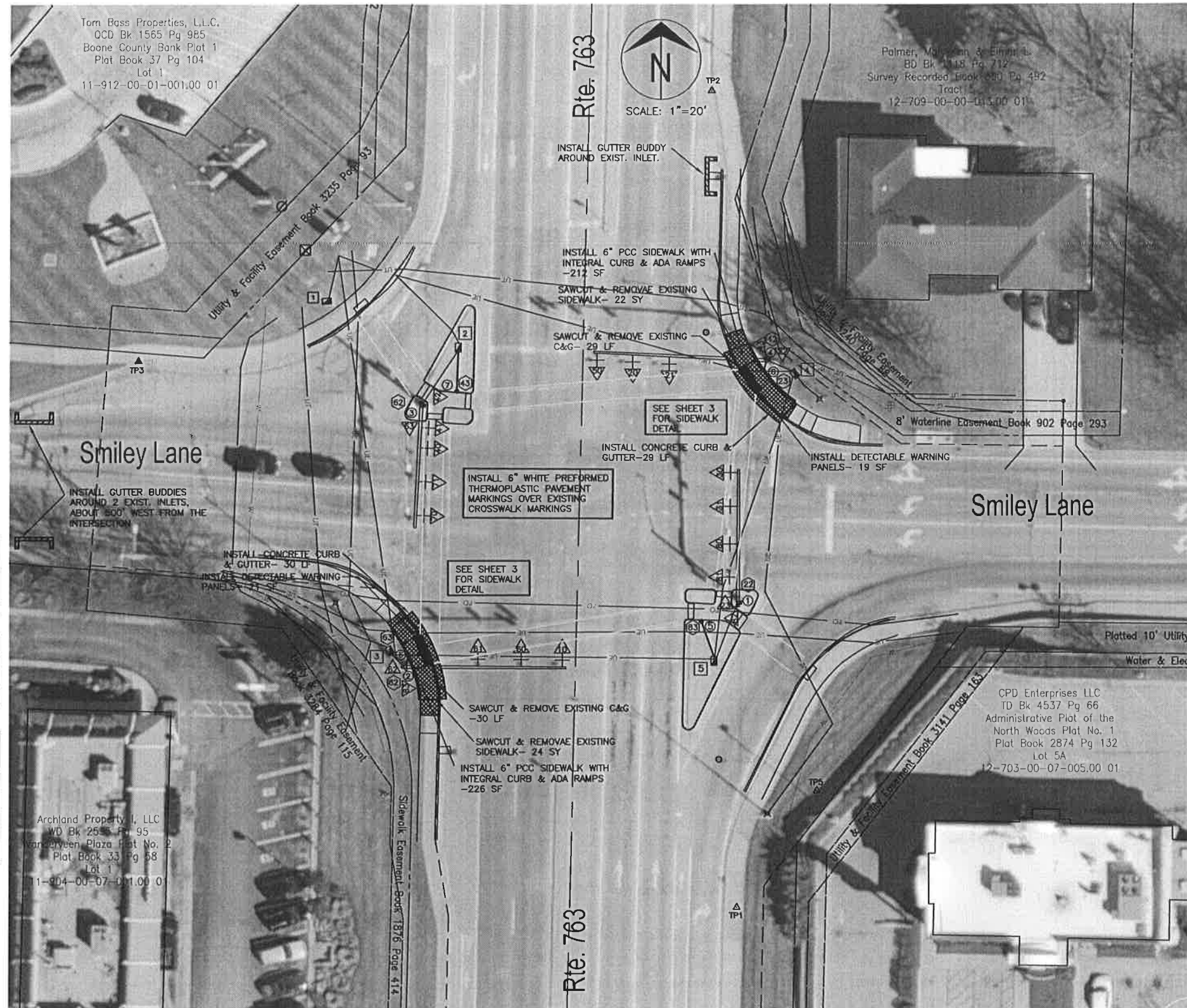
POST #	NO. OF SIGNALS	POST	NORTHING	EASTING
1	2	EXISTING	1150484.20	1690555.91
2	2	EXISTING	1150463.61	1690447.32
3	2	EXISTING	1150549.62	1690451.88
4	2	EXISTING	1150564.70	1690565.75

EXIST. PULL BOX LOCATIONS

SIGNAL	NORTHING	EASTING
1	1150584.48	1690420.70
2	1150569.10	1690464.45
3	1150468.46	1690441.82
4	1150562.05	1690575.31
5	1150464.94	1690549.41

NOTE

- CONCRETE REMOVAL AND BASE PREPARATION FOR THE 8' TOP MOUNT POST IS INCIDENTAL TO THE WORK.
- CROSSWALKS SHALL BE 6 FT WIDE. EXISTING CROSSWALK MARKINGS SHALL BE REMOVED PRIOR TO INSTALLATION OF NEW 6" WHITE THERMOPLASTIC PAVEMENT MARKING. EXISTING CROSSWALK MARKING REMOVAL IS INCIDENTAL TO THE WORK.



PEDESTRIAN SIGNAL PLAN

LEGEND

- PULL BOX WITH NUMBER
- POST WITH NUMBER
- DETECTOR WITH NUMBER
- SIGNAL HEAD WITH NUMBER
- SIGNAL CONTROLLER
- POWER SUPPLY

No.	Date	By	Revision

Rte. 763 & Smiley Lane APS
Plan Sheet

City of Columbia, Missouri
Department of Public Works

David Allen Nichols
Registered Professional Engineer
E-24212
File No. C00551
Scale: 1" = 20'
Date: 10/19/2020
Des. A.N.H.
Dwn. A.N.H.
Chk. AAA

\\hccoreg\project\james & associates_csa\design\user_engn_10-6-2020

2011 Orthophoto Source: Boone County Assessor