

No.	Date	By	Revision

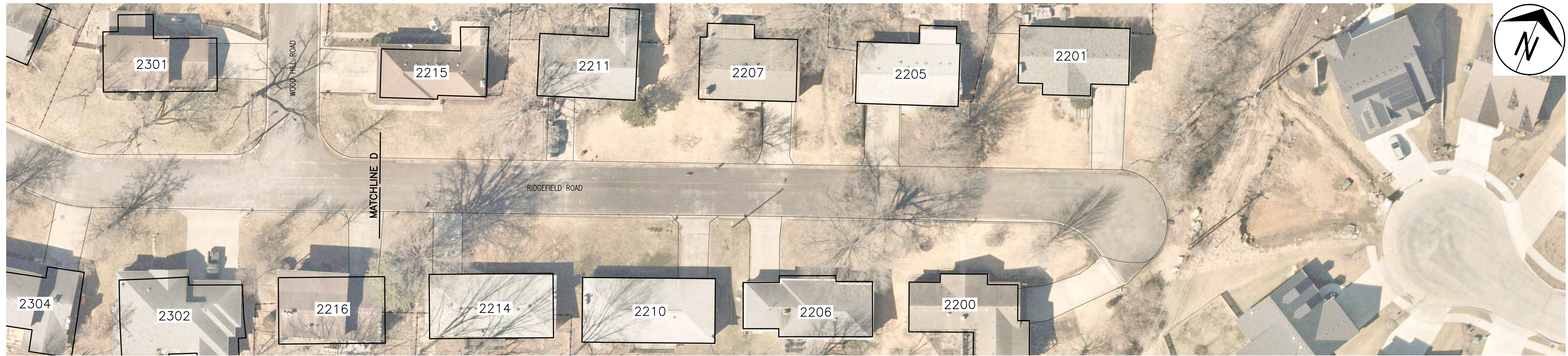
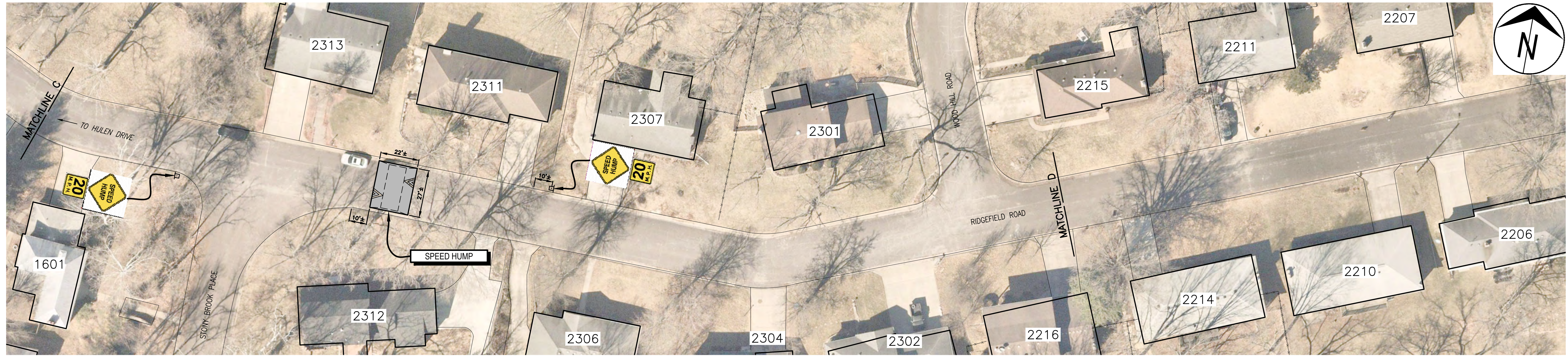
**HIGHRIDGE - RIDGEMONT - RIDGEFIELD  
TRAFFIC CALMING**  
Ridgefield Road Plan Sheet - Hulen Drive to Stony Brook Place

City of Columbia, Missouri  
Department of Public Works

Shane Steven Creech Registered Professional Engineer PE-2007011061
File No. .
Scale: 1" = 30'
Date: 8/11/2022
Des. A.S.B.
Dwn. A.S.B.
Chk. J.D.R.
Sheet 1 of 9

o:\cadd\proj\traffic\ridgemont\_road - highridge - ridgefield\ridgemont - highridge - ridgefield traffic calming project.dwg

2011 Orthophoto Source: Boone County Assessor



o:\caddpro\traffic\veining\ridgefield\_road - highridge - ridgefield\ridgefield - highridge - ridgefield traffic calming project.dwg

No.	Date	By	Revision

**HIGHRIDGE - RIDGEMONT - RIDGEFIELD  
TRAFFIC CALMING**

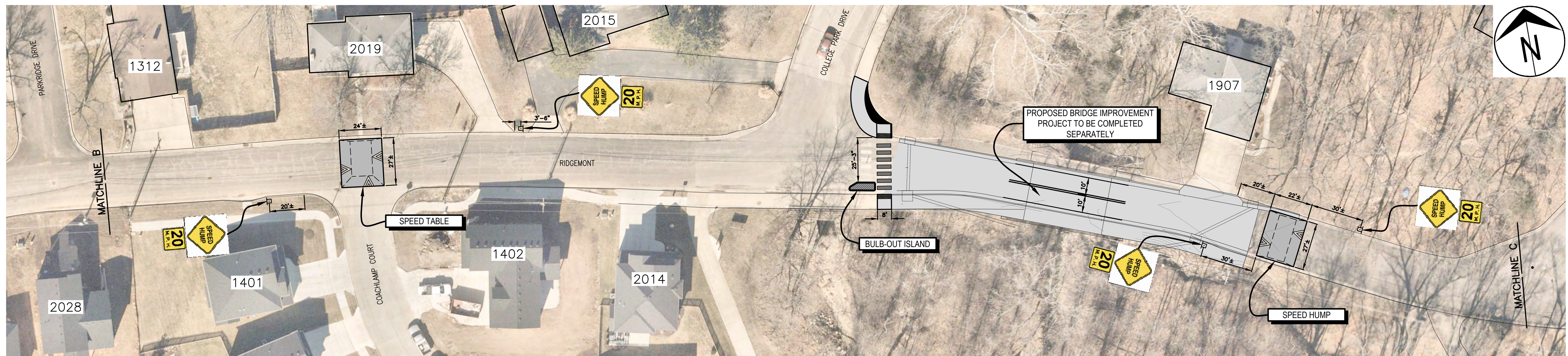
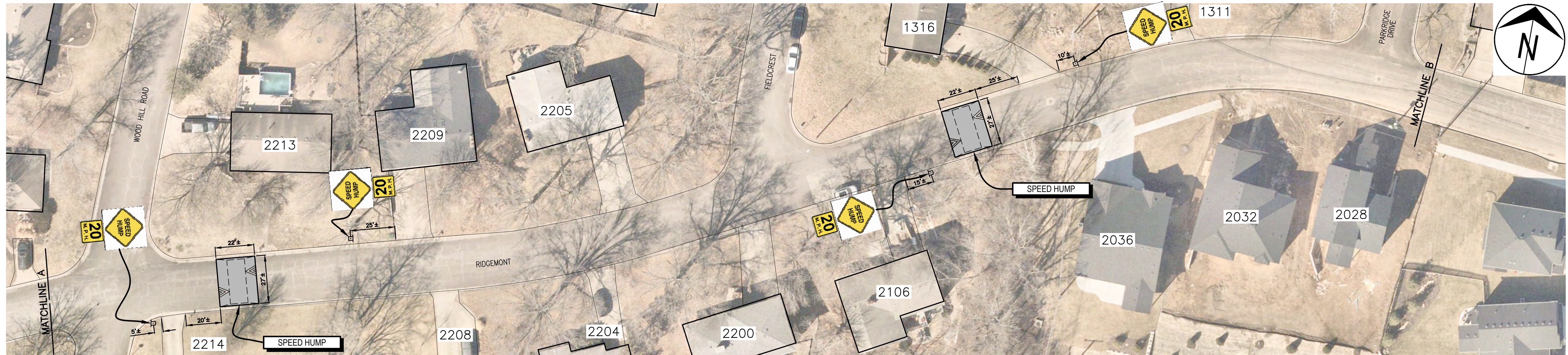
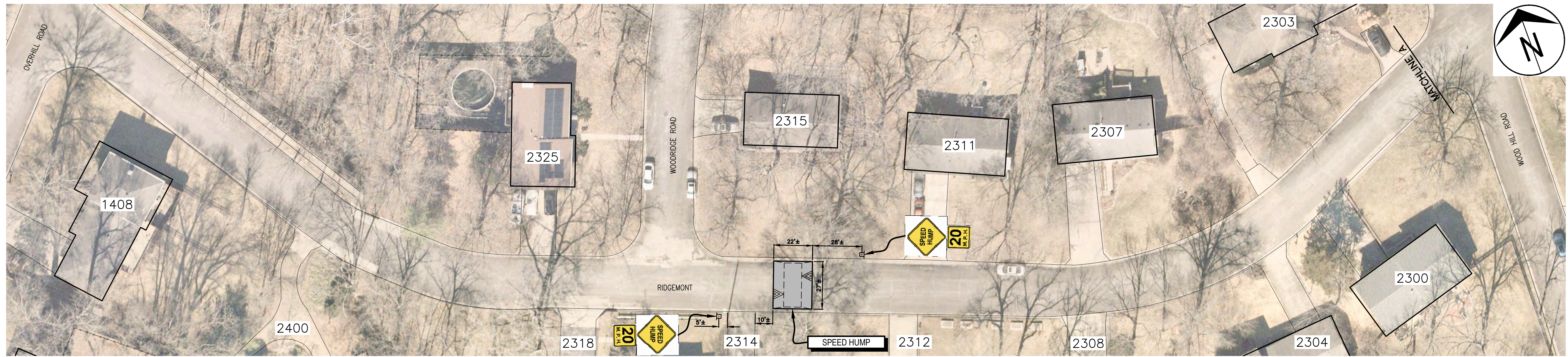
Ridgefield Road Plan Sheet - Stony Brook Place to Terminus

City of Columbia, Missouri

Department of Public Works

Shane Steven Creech  
Registered Professional  
Engineer  
PE-2007011061

File No.	.
Scale:	1" = 30'
Date:	8/11/2022
Des.	A.S.B.
Dwn.	A.S.B.
Chk.	J.D.R.



No.	Date	By	Revision

**HIGHRIDGE - RIDGEMONT - RIDGEFIELD  
TRAFFIC CALMING**  
Ridgemoor Plan Sheet - Overhill Road to Highridge Drive

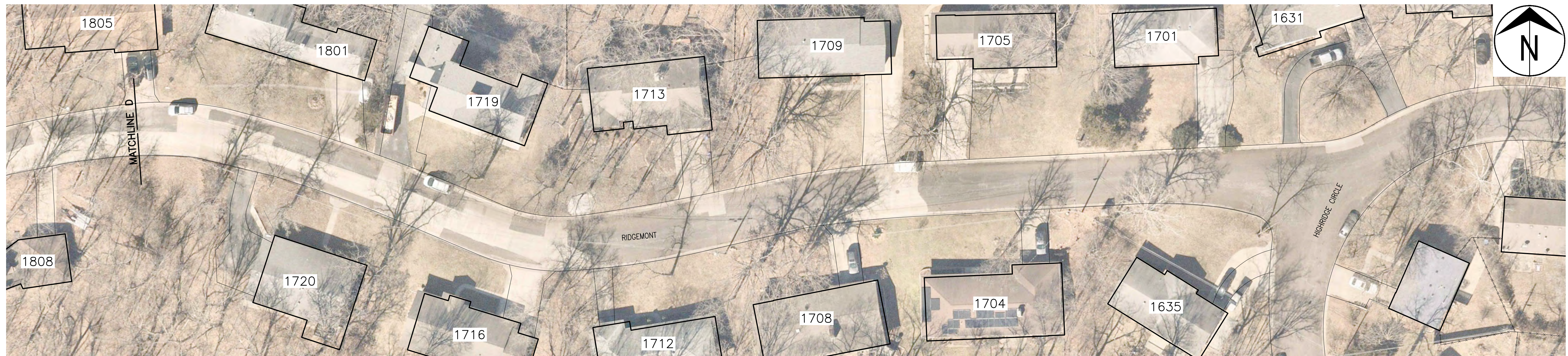
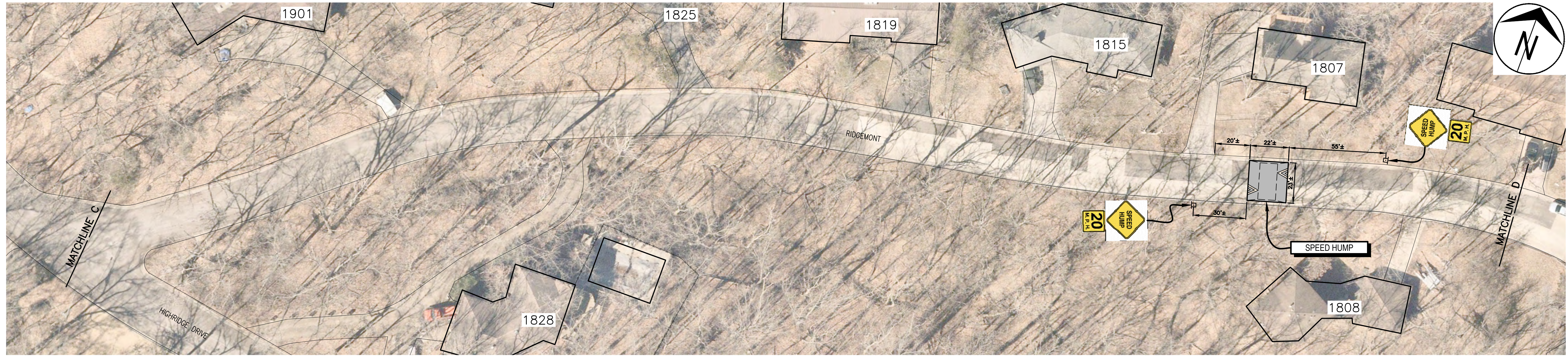
City of Columbia, Missouri  
Department of Public Works

Shane Steven Creech  
Registered Professional Engineer  
PE-2007011061

File No. \_\_\_\_\_  
Scale: 1" = 30'  
Date: 11/3/2022  
Des. A.S.B.  
Dwn. A.S.B.  
Chk. J.D.R.

o:\cadd\proj\traffic\ridgemoor\road - highridge - ridgefield\ridgemoor - highridge - ridgefield traffic calming project.dwg

2011 Orthophoto Source: Boone County Assessor



No.	Date	By	Revision

**HIGHRIDGE - RIDGEMONT - RIDGEFIELD  
TRAFFIC CALMING**  
Ridgmont Plan Sheet - Highridge Drive to Highridge Circle

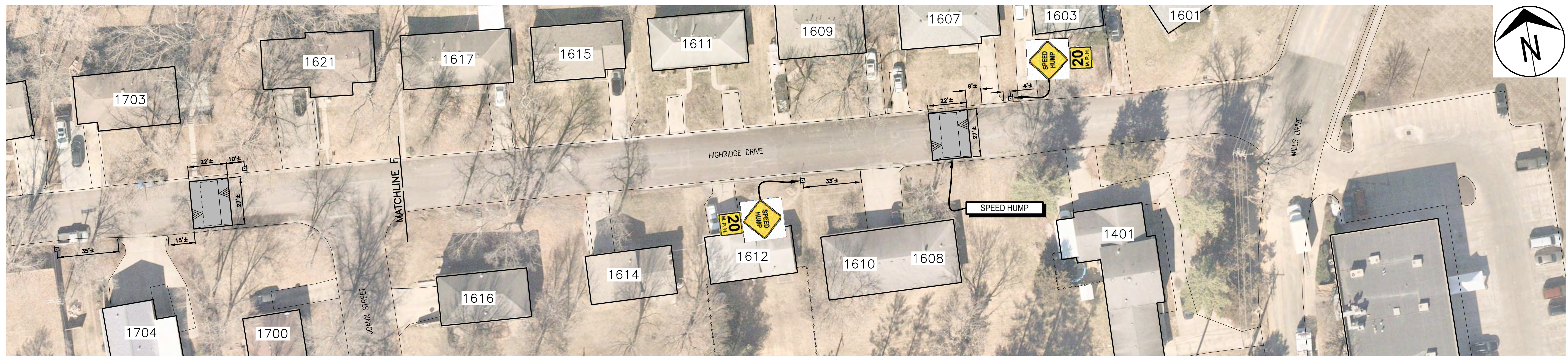
City of Columbia, Missouri  
Department of Public Works

Shane Steven Creech  
Registered Professional  
Engineer  
PE-2007011061

File No. .  
Scale: 1" = 30'  
Date: 8/11/2022  
Des. A.S.B.  
Dwn. A.S.B.  
Chk. J.D.R.

o:\caddpro\traffic\veining\ridgmont\_road - highridge - ridgefield\ridgmont - highridge - ridgefield traffic calming project.dwg

2011 Orthophoto Source: Boone County Assessor



o:\cadd\proj\traffic\signing\ridgemont\_road - highridge - ridgefield\ridgemont - highridge - ridgefield traffic calming project.dwg

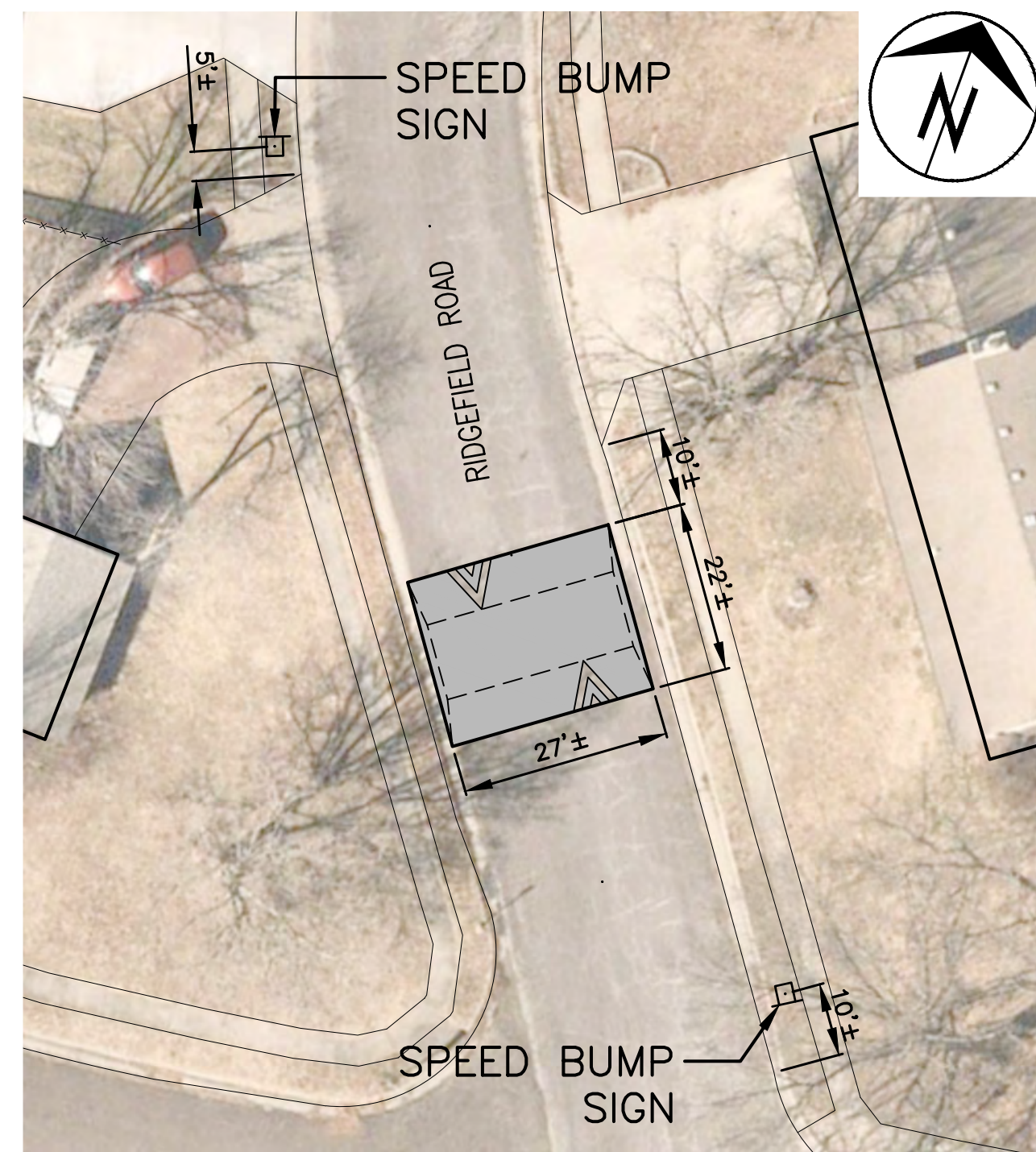
2011 Orthophoto Source: Boone County Assessor

Revision	By	Date	No.

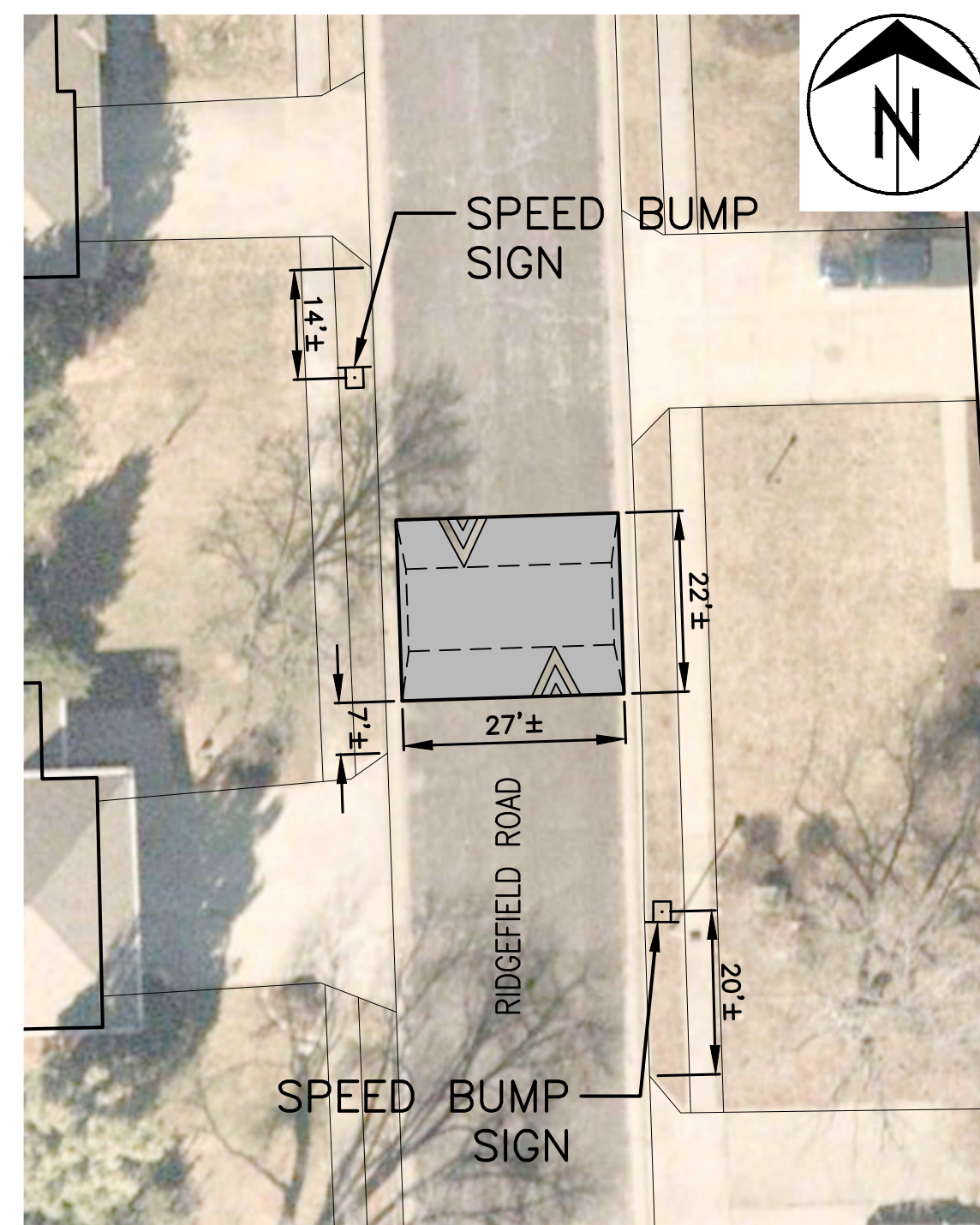
**HIGHRIDGE - RIDGEMONT - RIDGEFIELD  
TRAFFIC CALMING**  
Highridge Drive Plan Sheet

City of Columbia, Missouri  
Department of Public Works

File No.	
Scale:	1" = 30'
Date:	8/11/2022
Des.	A.S.B.
Dwn.	A.S.B.
Chk.	J.D.R.



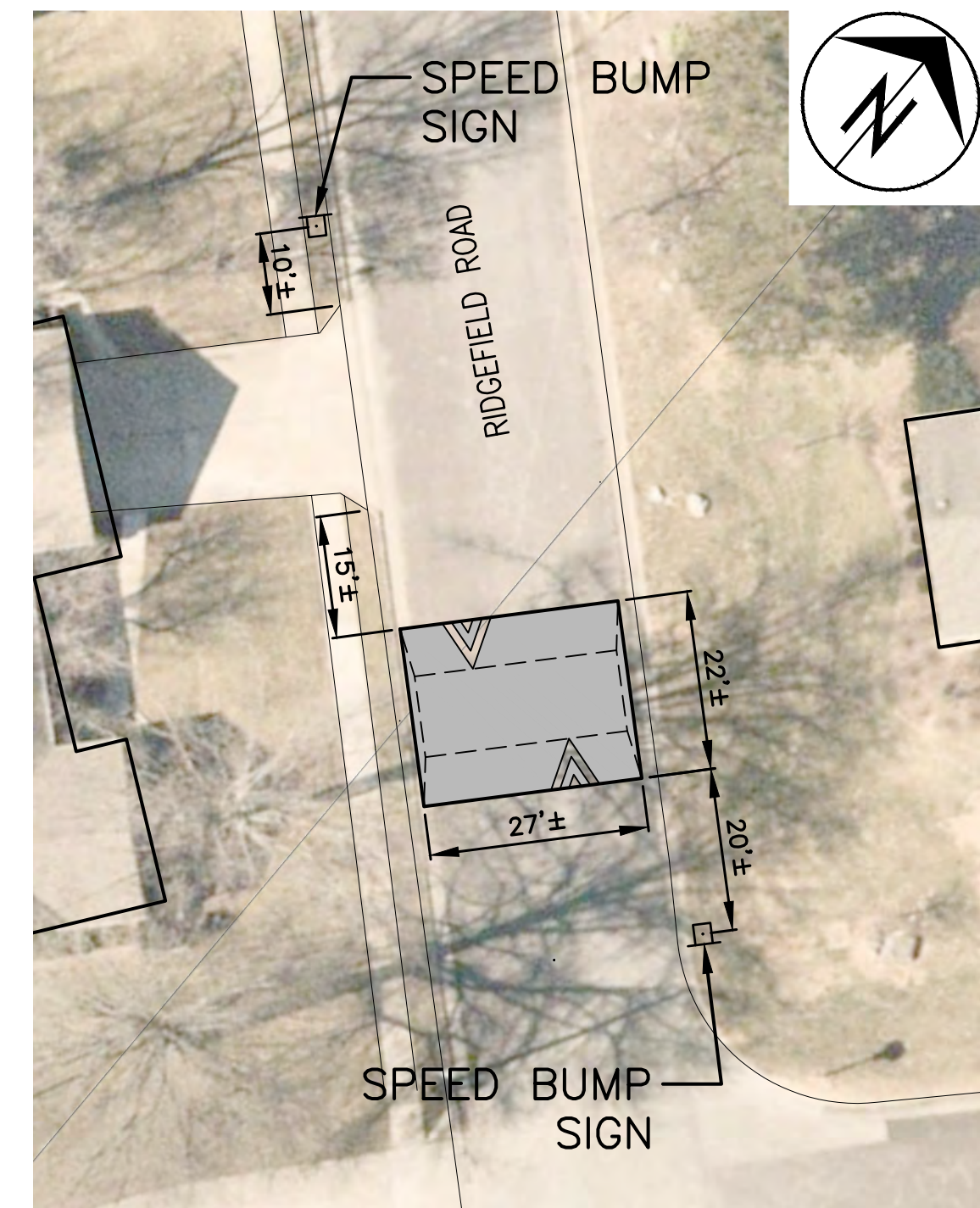
**2623 RIDGEFIELD ROAD**  
1" = 20'



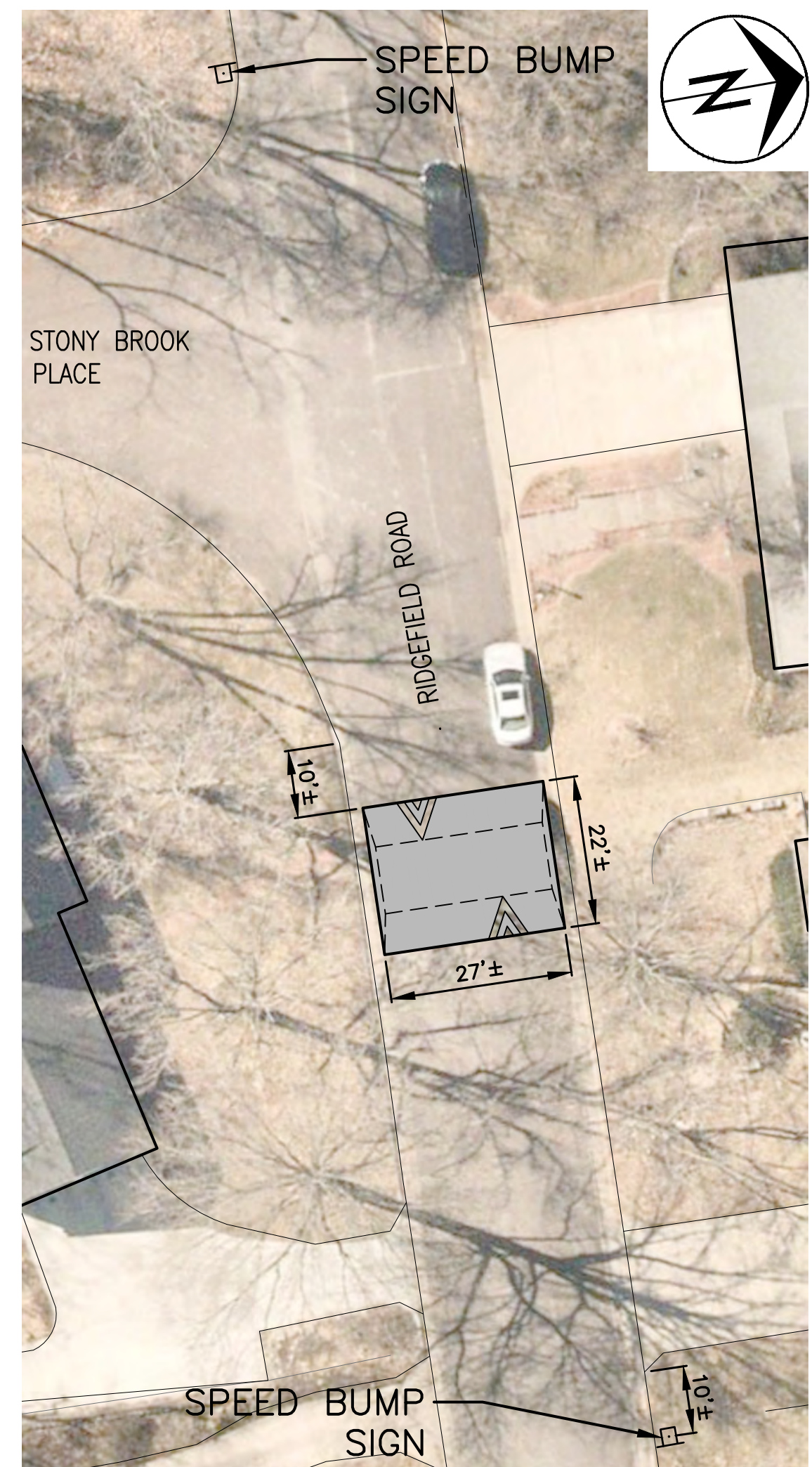
**2613 RIDGEFIELD ROAD**  
1" = 20'



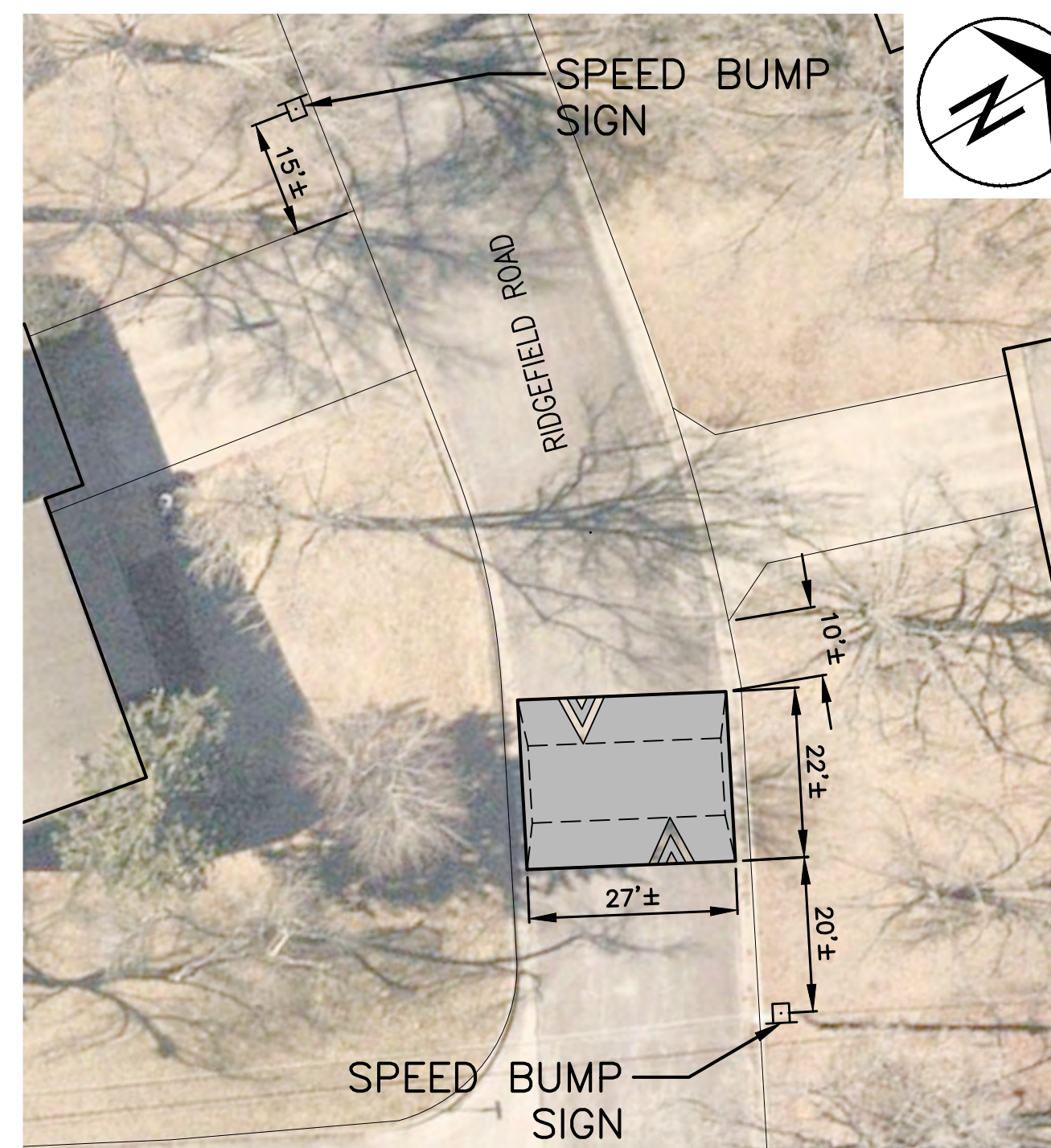
**2516 RIDGEFIELD ROAD**  
1" = 20'



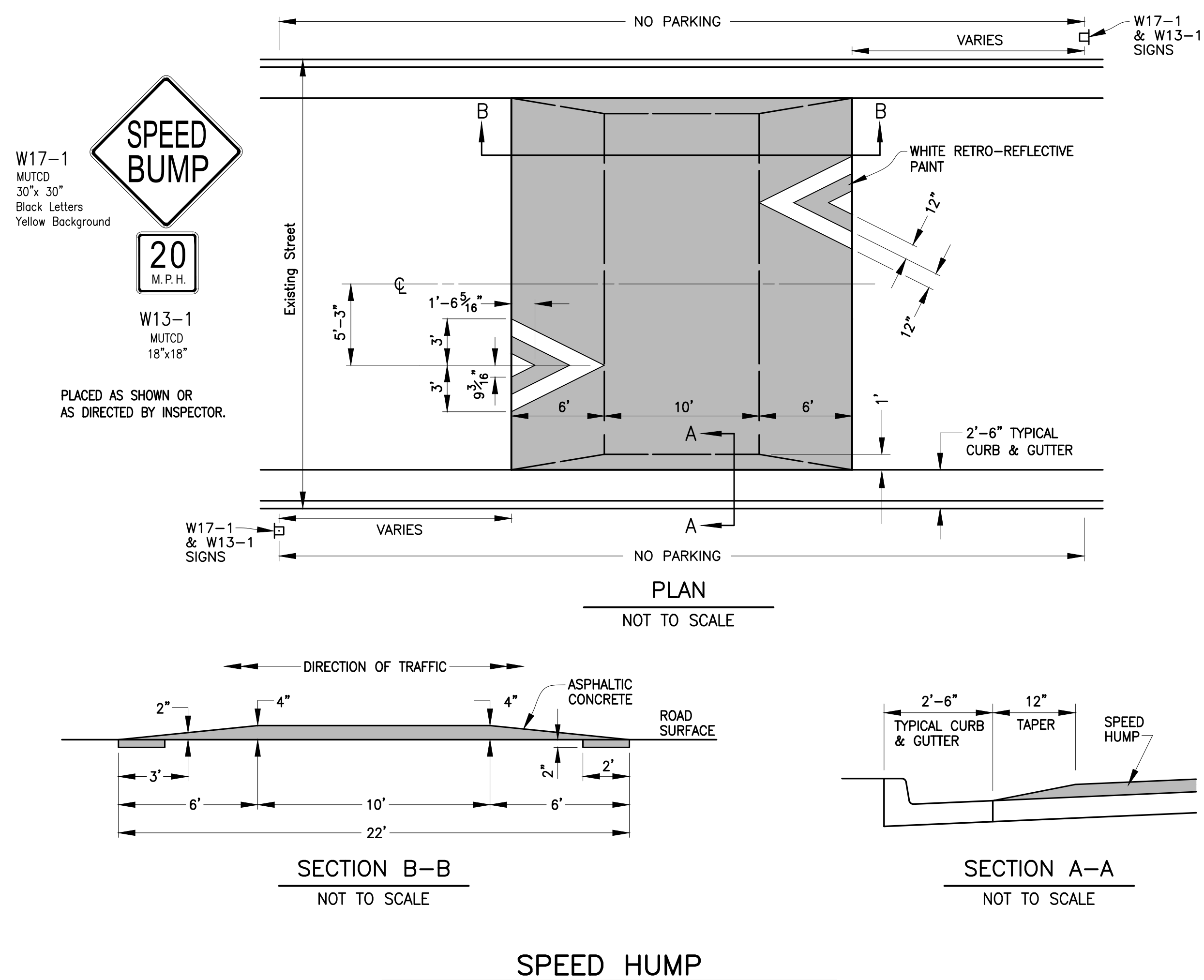
**2500 RIDGEFIELD ROAD**  
1" = 20'



**2311 RIDGEFIELD ROAD**  
1" = 20'



**2409 RIDGEFIELD ROAD**  
1" = 20'



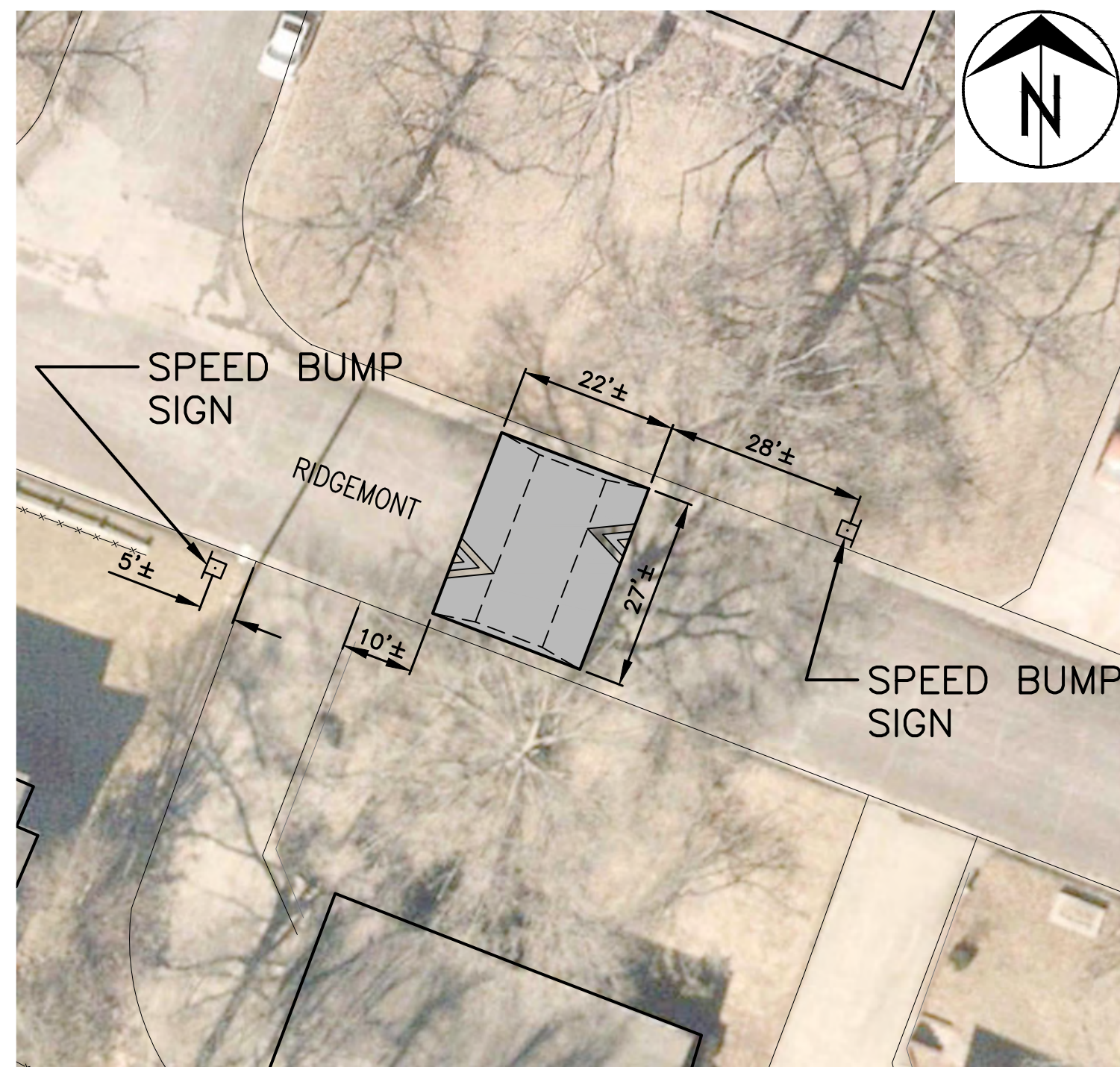
No.	Date	By	Revision

**HIGHRIDGE - RIDGEMONT - RIDGEFIELD  
TRAFFIC CALMING**  
Ridgefield Road Speed Humps

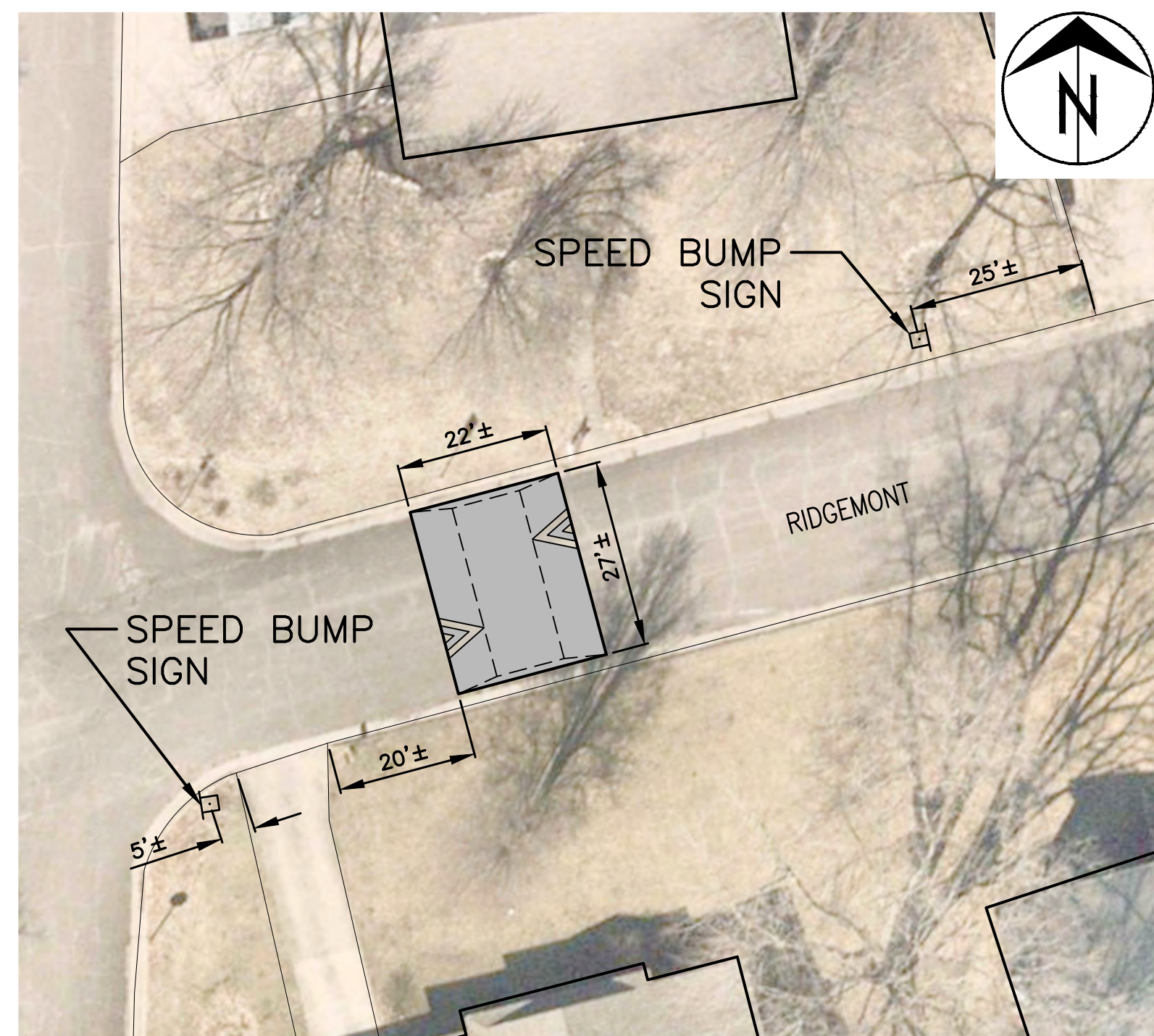
City of Columbia, Missouri  
Department of Public Works

Shane Steven Creech  
Registered Professional  
Engineer  
PE-2007011061

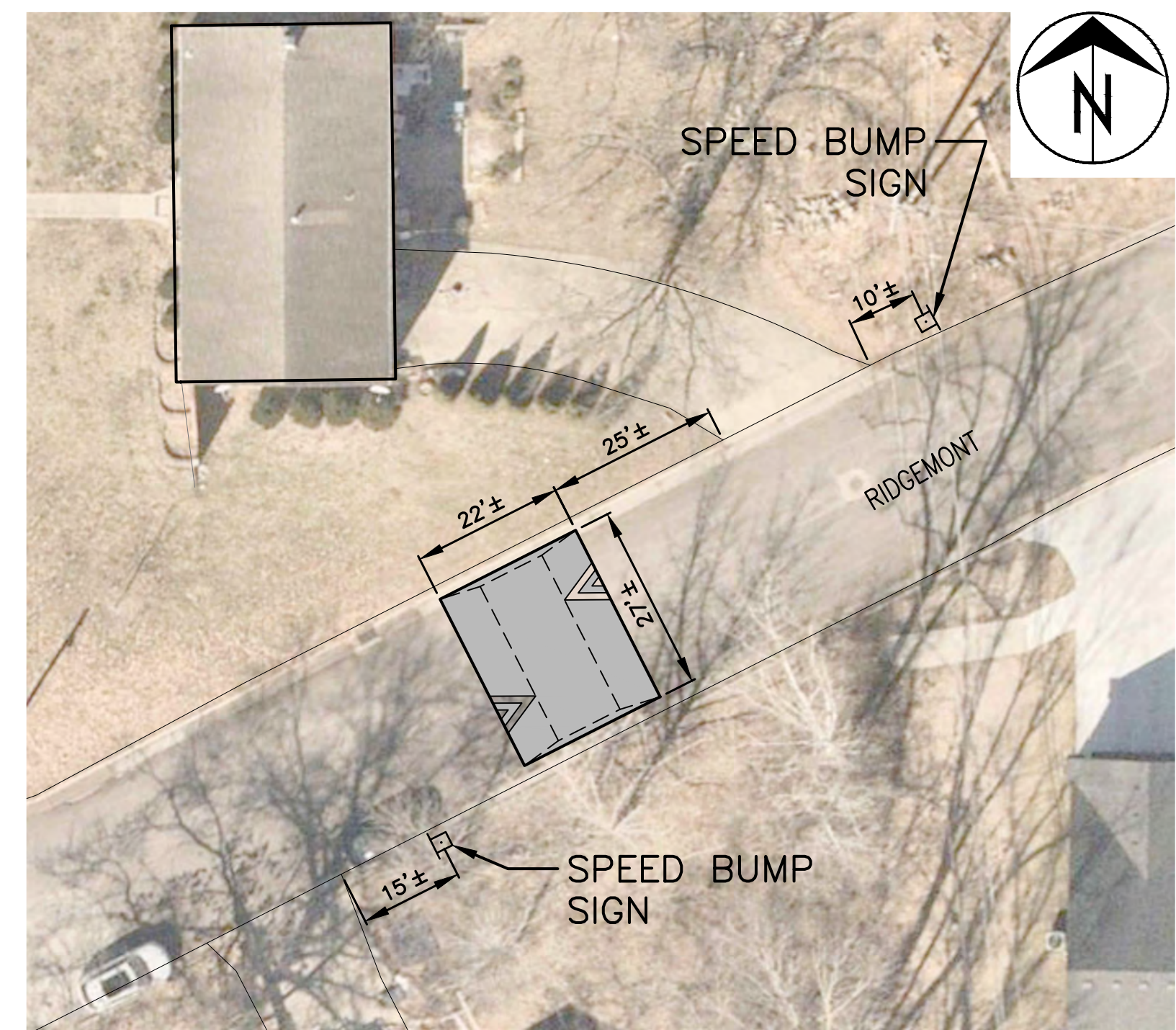
File No. .  
Scale: As Shown  
Date: 8/11/2022  
Des. A.S.B.  
Dwn. A.S.B.  
Chk. J.D.R.



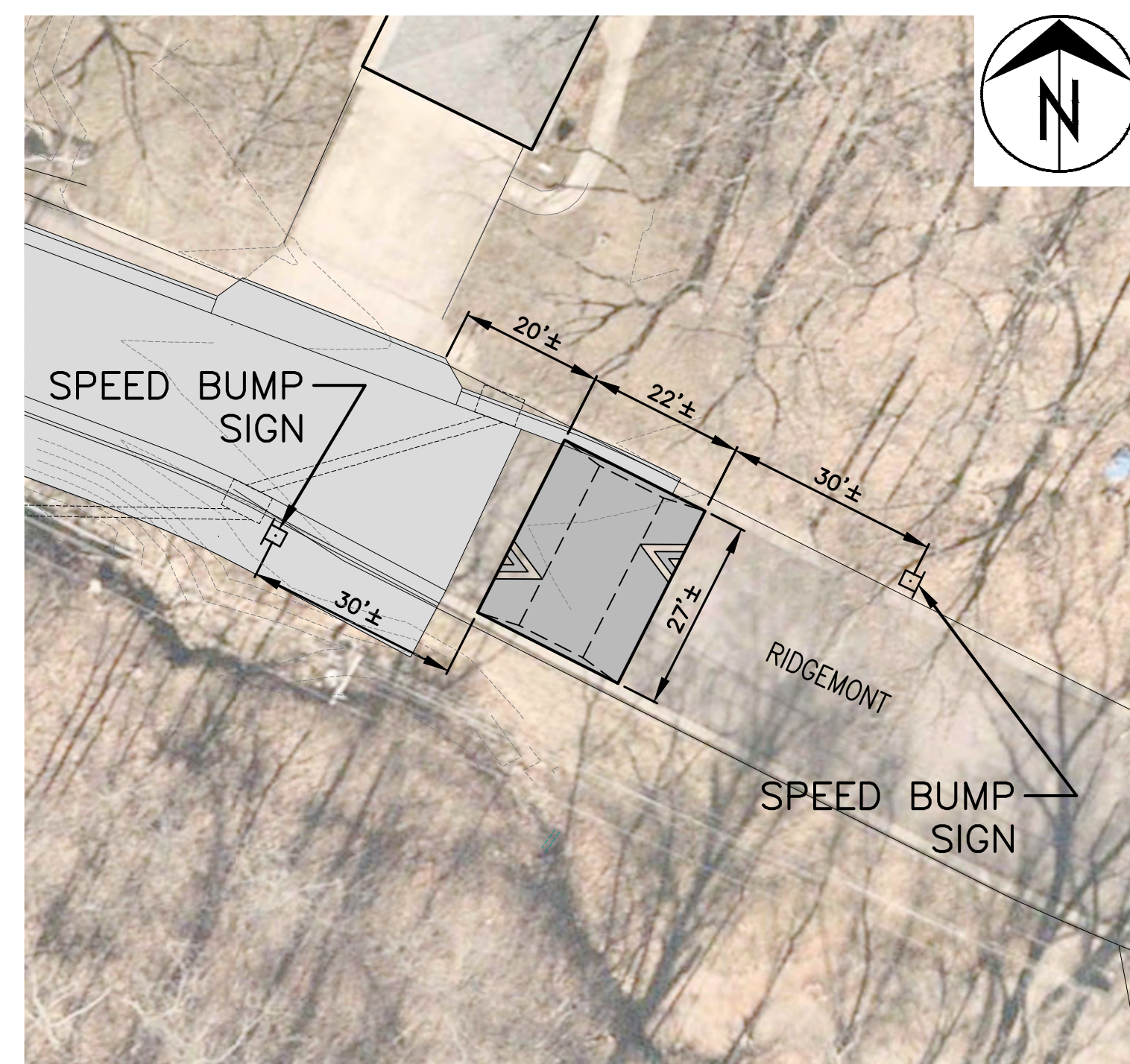
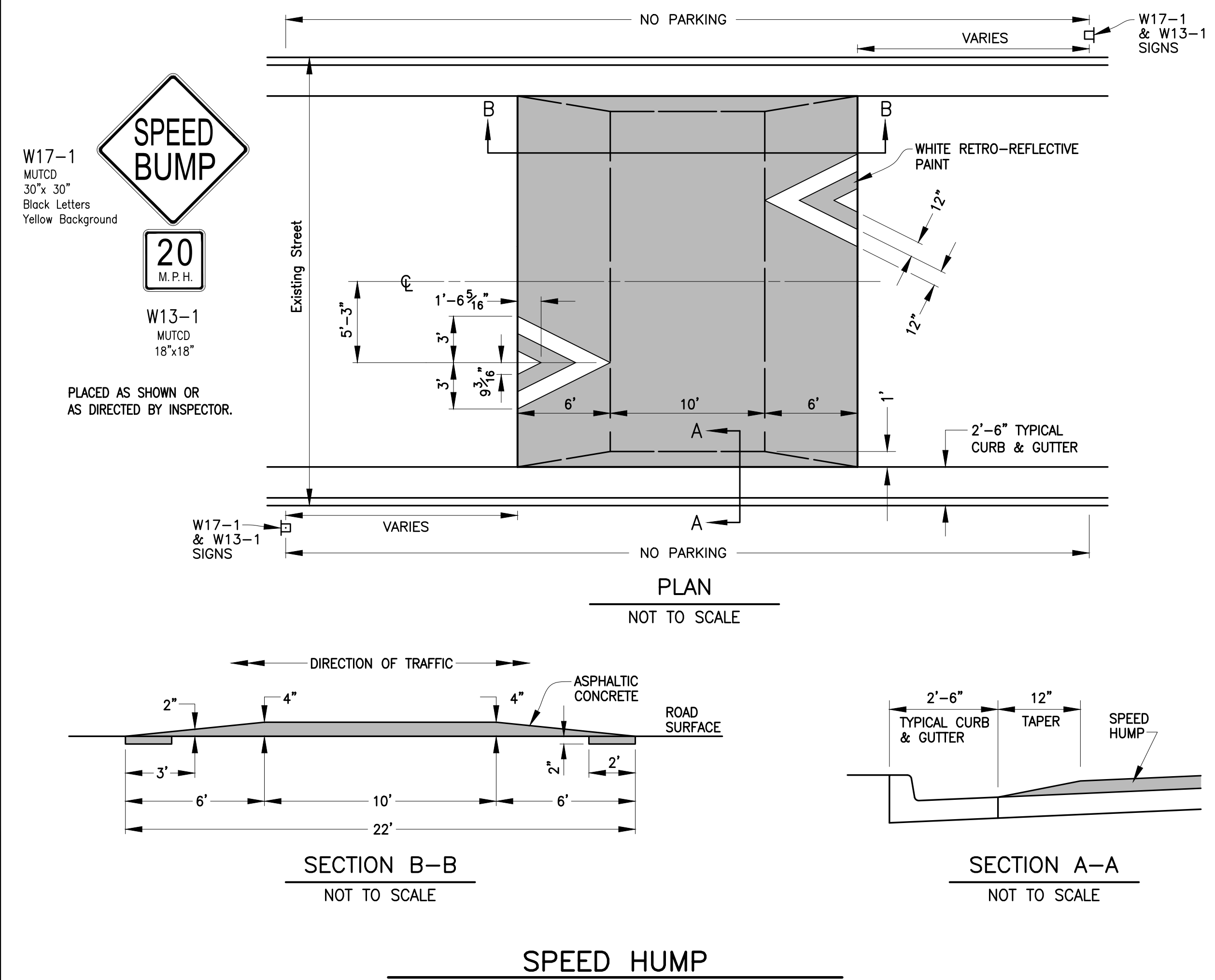
**2314 RIDGEMONT**  
1" = 20'



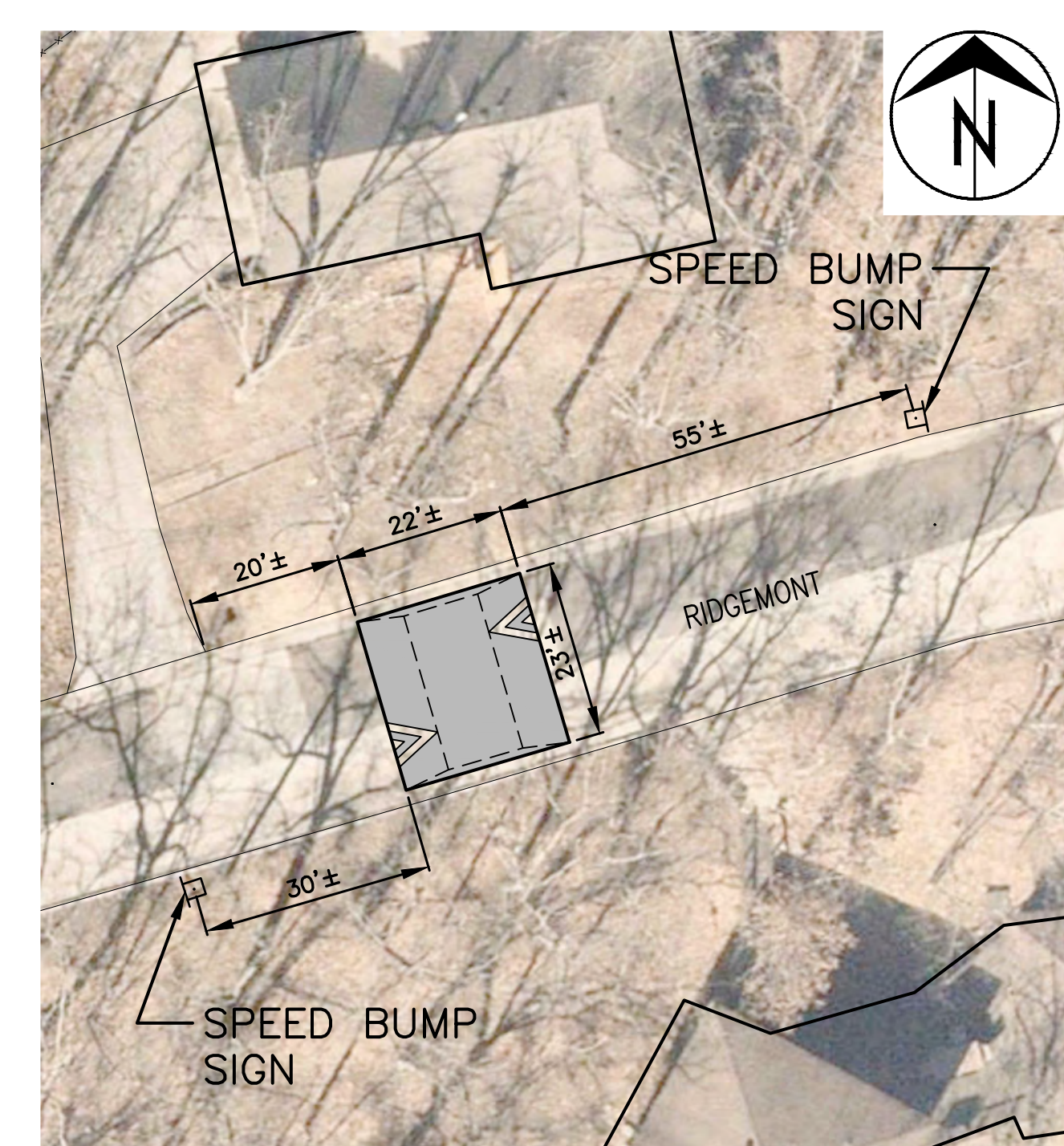
**2214 RIDGEMONT**  
1" = 20'



**2106 RIDGEMONT**  
1" = 20'



**1907 RIDGEMONT**  
1" = 20'



**1807 RIDGEMONT**  
1" = 20'

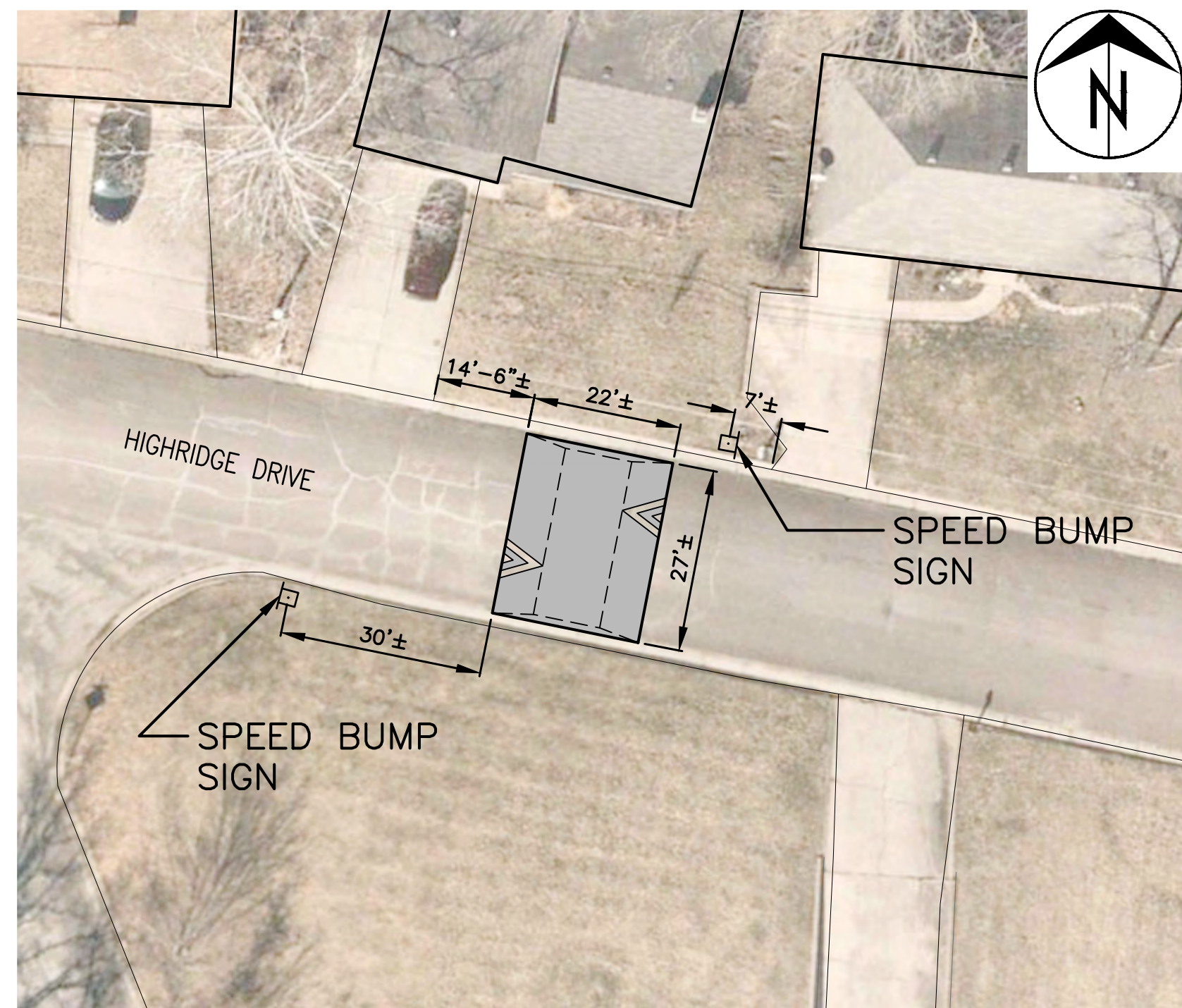
Revision	By	Date	No.

**HIGHRIDGE - RIDGEMONT - RIDGEFIELD TRAFFIC CALMING**  
Ridgemont Speed Humps

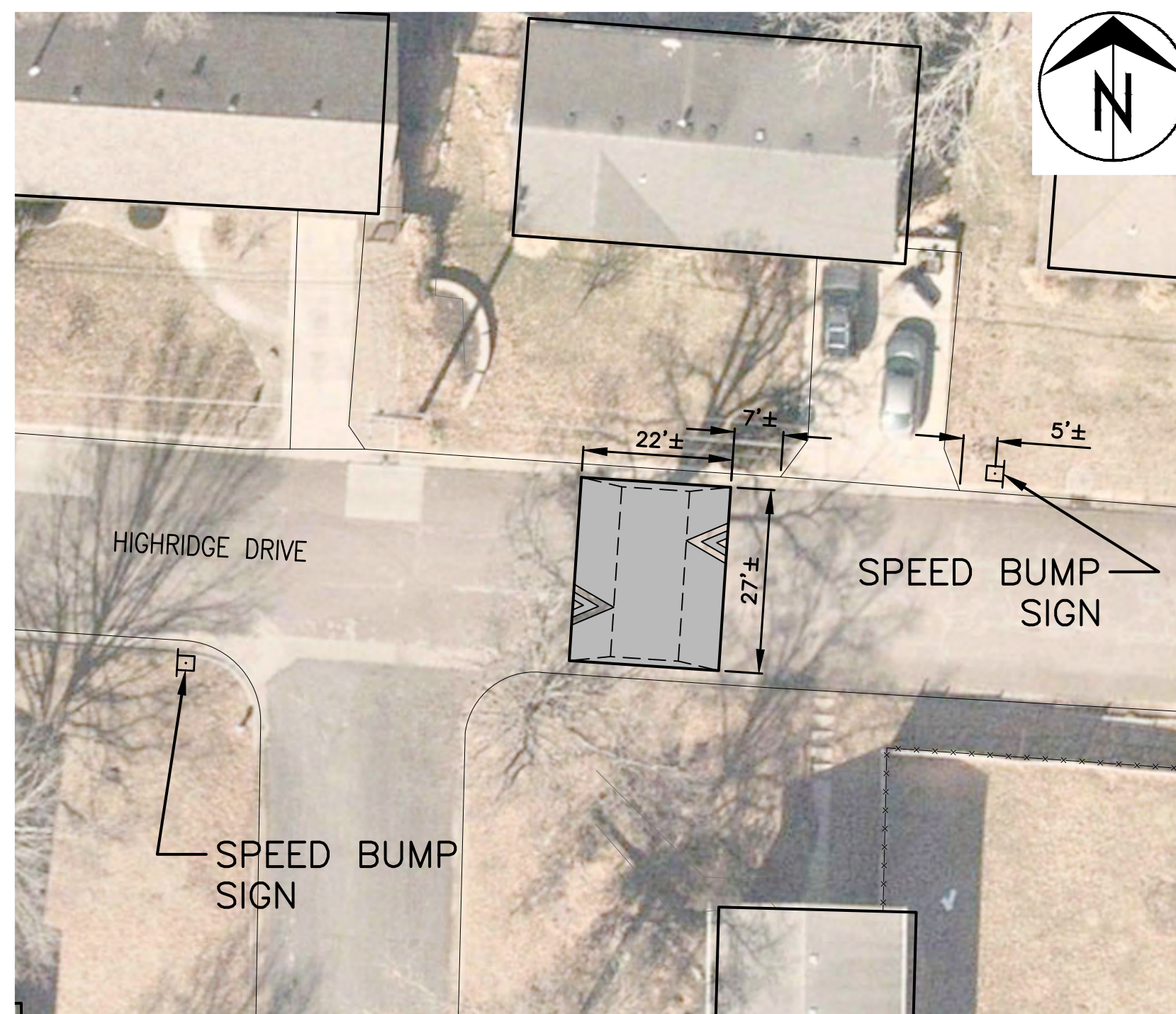
City of Columbia, Missouri  
Department of Public Works

Shane Steven Creech  
Registered Professional Engineer  
PE-2007011061

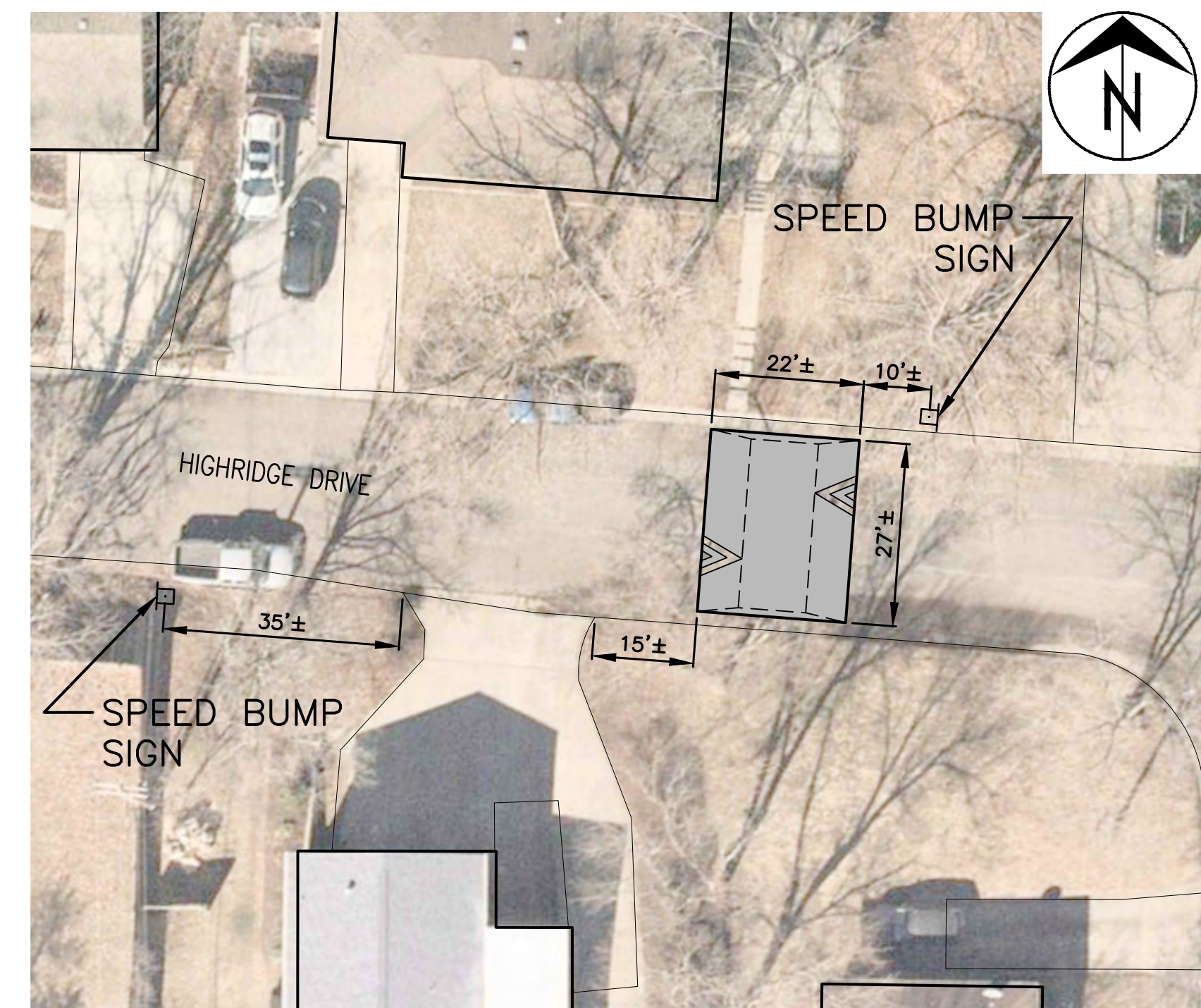
File No. .  
Scale: As Shown  
Date: 8/11/2022  
Des. A.S.B.  
Dwn. A.S.B.  
Chk. J.D.R.



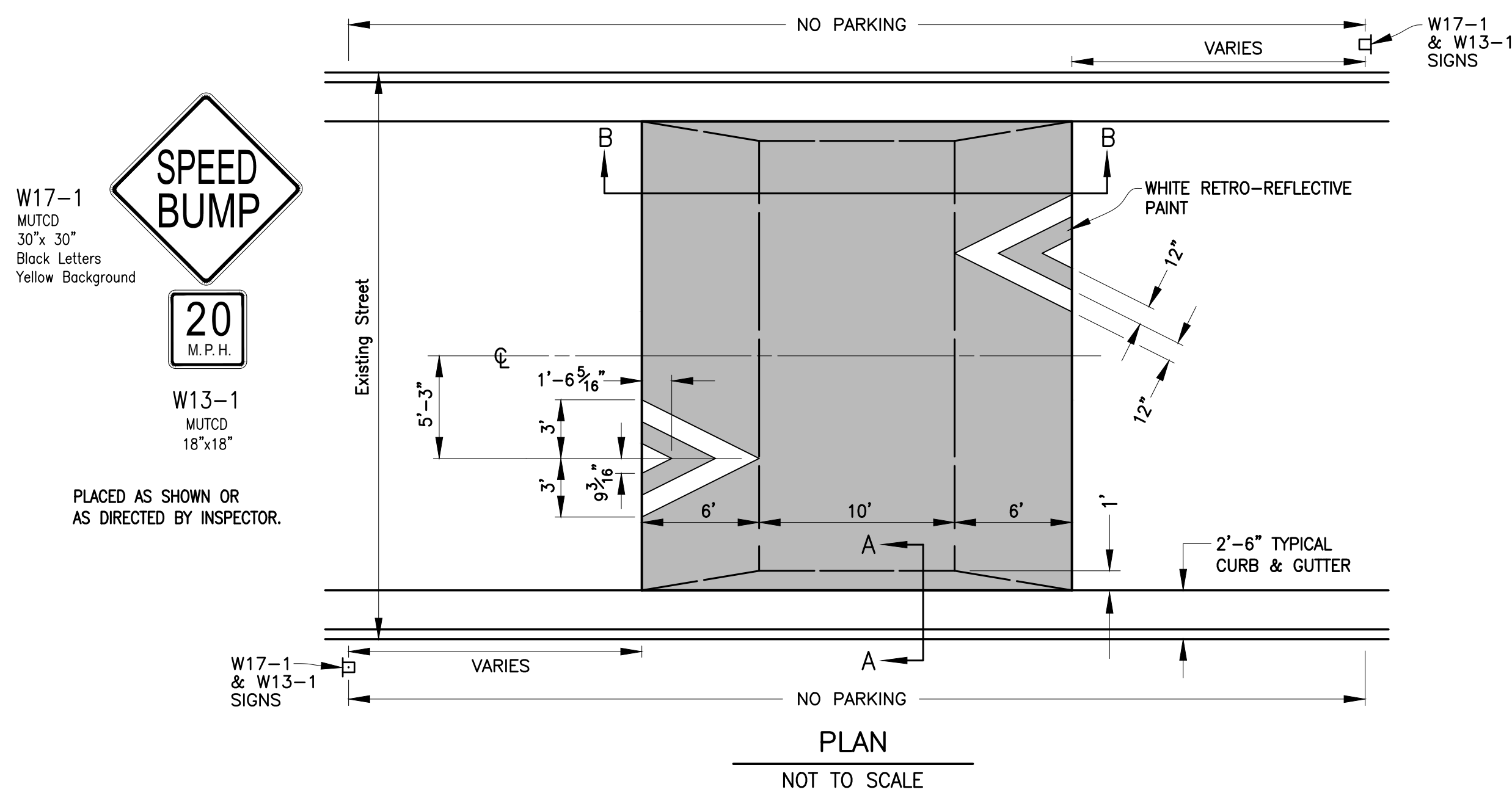
**1814 HIGHRIDGE DRIVE**  
1" = 20'



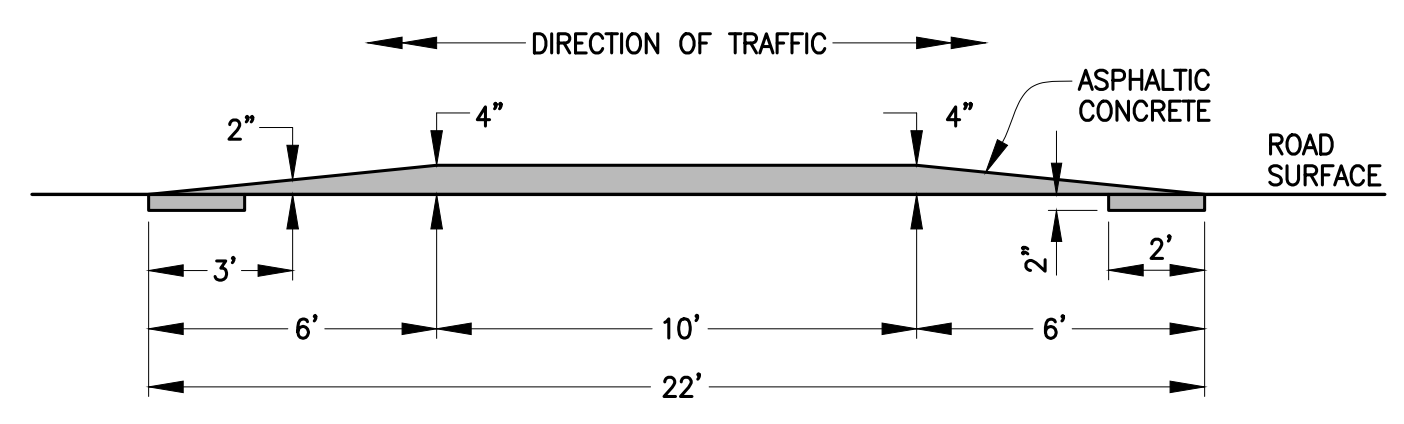
**1721 HIGHRIDGE DRIVE**  
1" = 20'



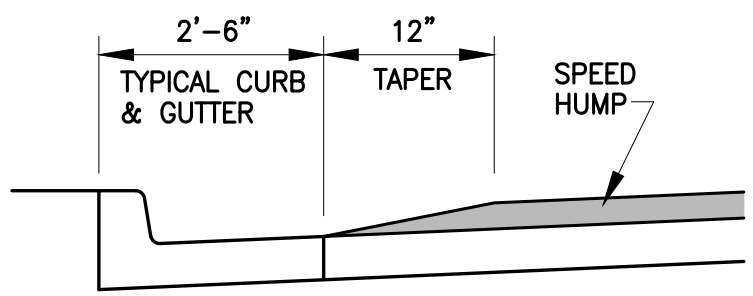
**1703 HIGHRIDGE DRIVE**  
1" = 20'



**PLAN**  
NOT TO SCALE

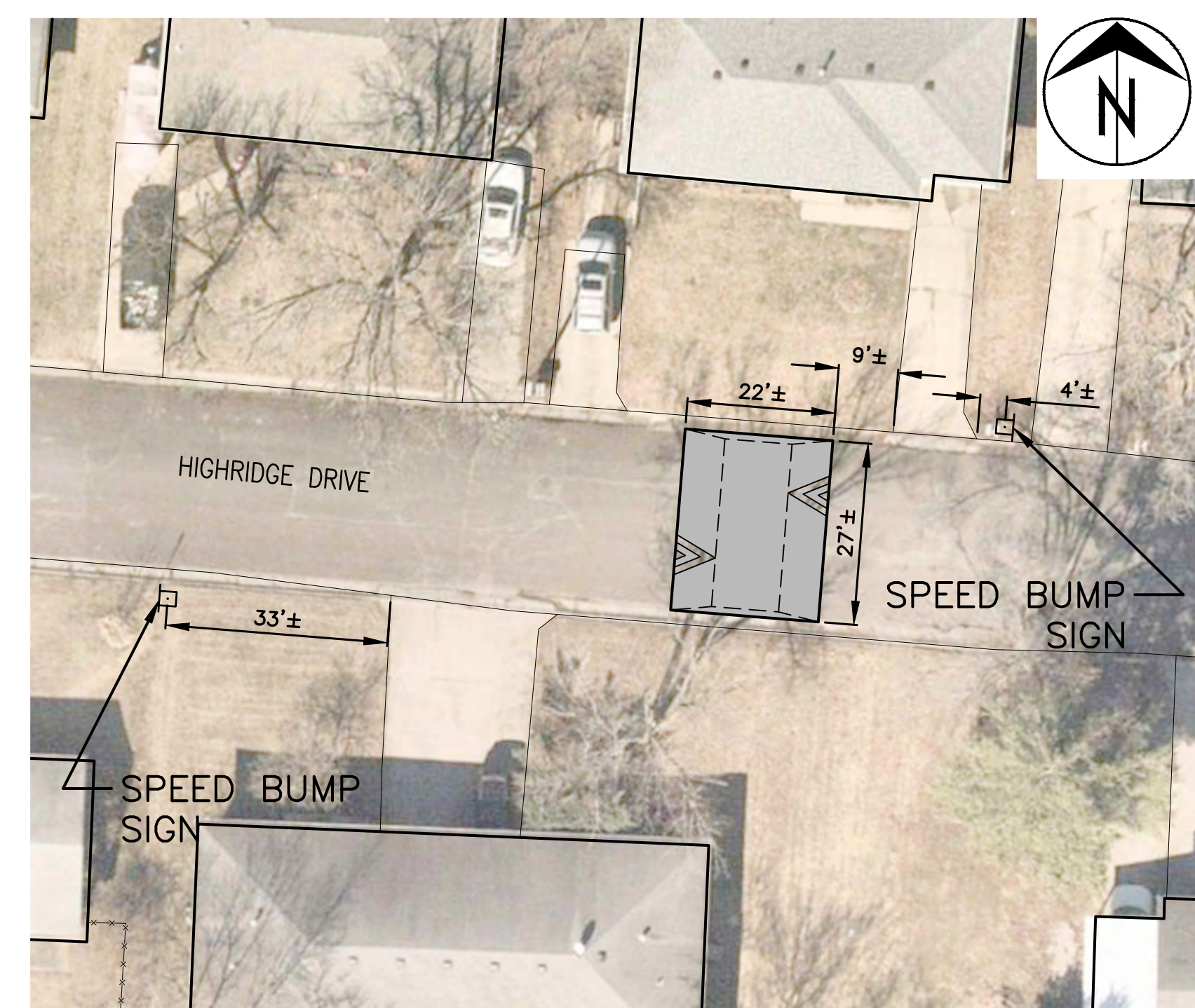


**SECTION B-B**  
NOT TO SCALE



**SECTION A-A**  
NOT TO SCALE

**SPEED HUMP**



**1607 HIGHRIDGE DRIVE**  
1" = 20'

Revision	By	Date	No.

**HIGHRIDGE - RIDGEMONT - RIDGEFIELD**  
**TRAFFIC CALMING**  
Highridge Drive Speed Humps

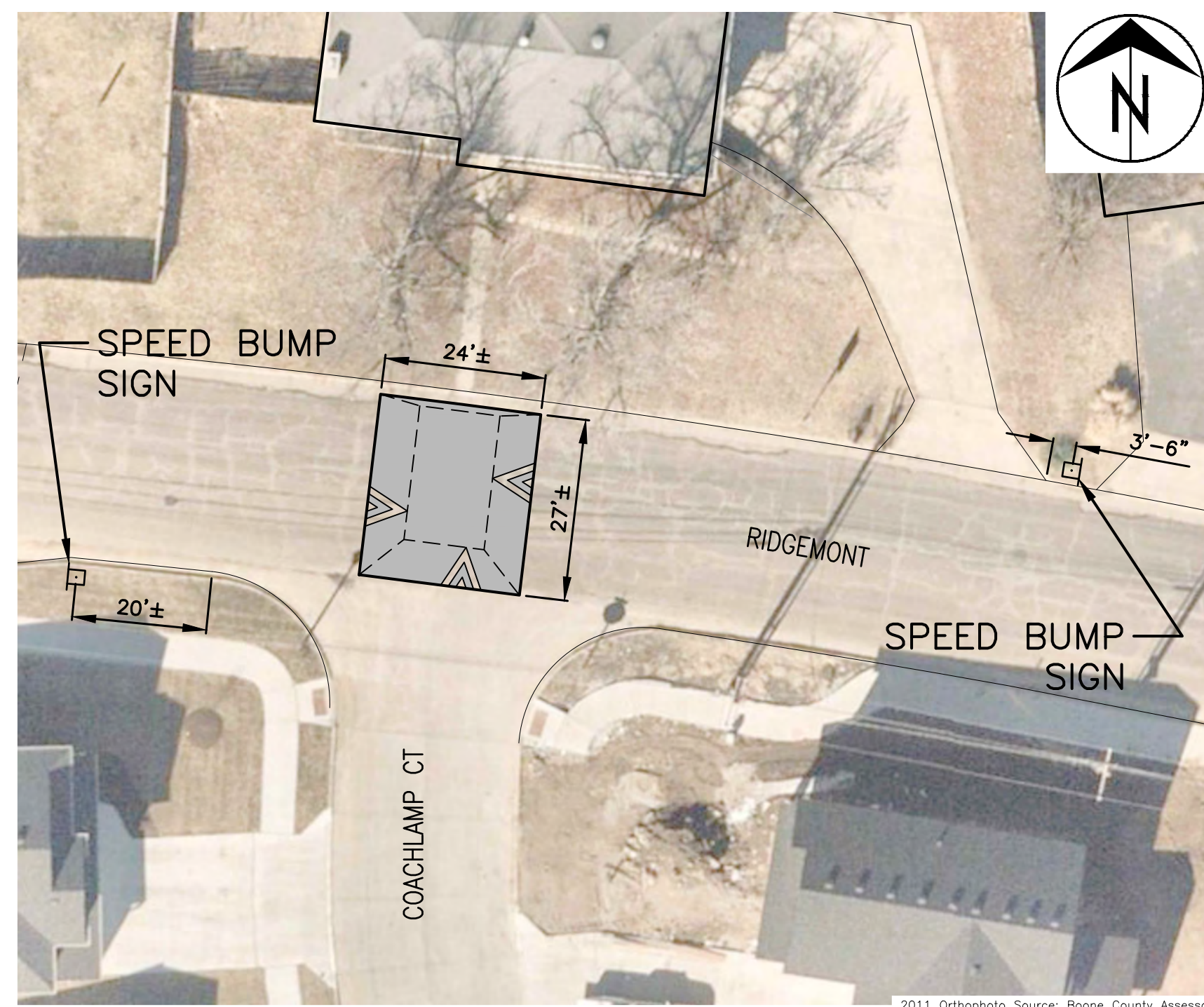
City of Columbia, Missouri  
Department of Public Works

Shane Steven Creech  
Registered Professional Engineer  
PE-2007011061

File No. .  
Scale: As Shown  
Date: 8/11/2022  
Des. A.S.B.  
Dwn. A.S.B.  
Chk. J.D.R.

c:\cadd\p\verifier\calming\ridgemont road - highridge - ridgefield\ridgemont - highridge - ridgefield traffic calming project.dwg

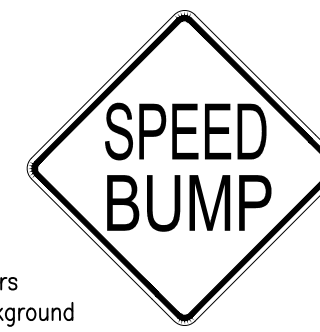




**RIDGEMONT — COACHLAMP COURT**  
1" = 20'

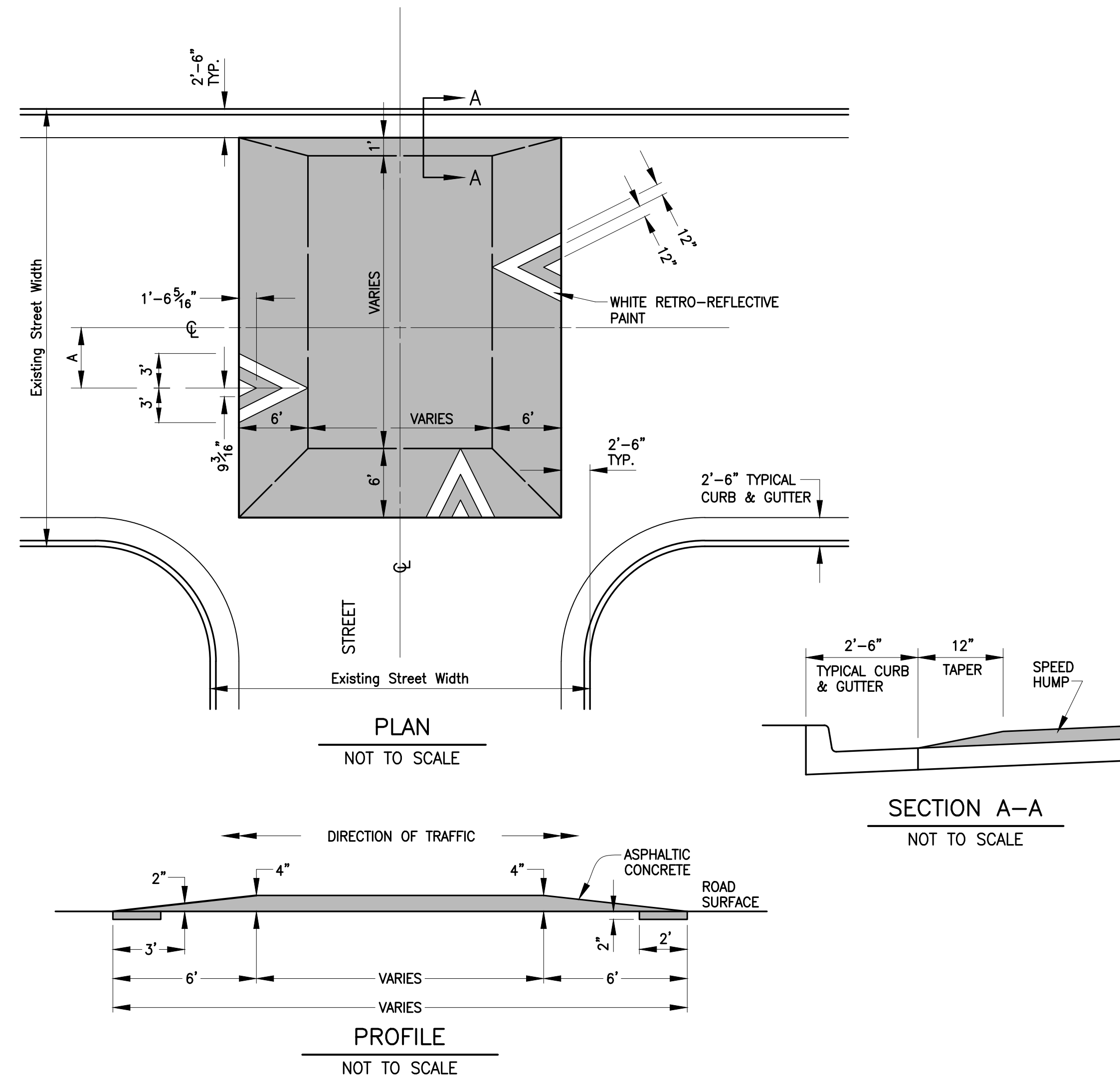
Existing Street Width (Back of Curb to Back of Curb)	A
38' & wider	5'-3"
between 32' & 38'	3'-9"
32' & narrower	3'-2"

W17-1  
MUTCD  
30" x 30"  
Black Letters  
Yellow Background



W13-1  
MUTCD  
18" x 18"

PLACED APPROX. 30'  
BEFORE TABLE OR AS  
DIRECTED BY INSPECTOR.



**SPEED TABLE — T-INTERSECTION**

No.	Date	By	Revision

**HIGHRIDGE - RIDGEMONT - RIDGEFIELD  
TRAFFIC CALMING**  
Speed Table

City of Columbia, Missouri  
Department of Public Works

Shane Steven Creech  
Registered Professional  
Engineer  
PE-2007011061

File No. .  
Scale: As Shown  
Date: 8/11/2022  
Des. A.S.B.  
Dwn. A.S.B.  
Chk. J.D.R.