



Case # 06-2022: The Kitchen and Discovery Offices PD Plan

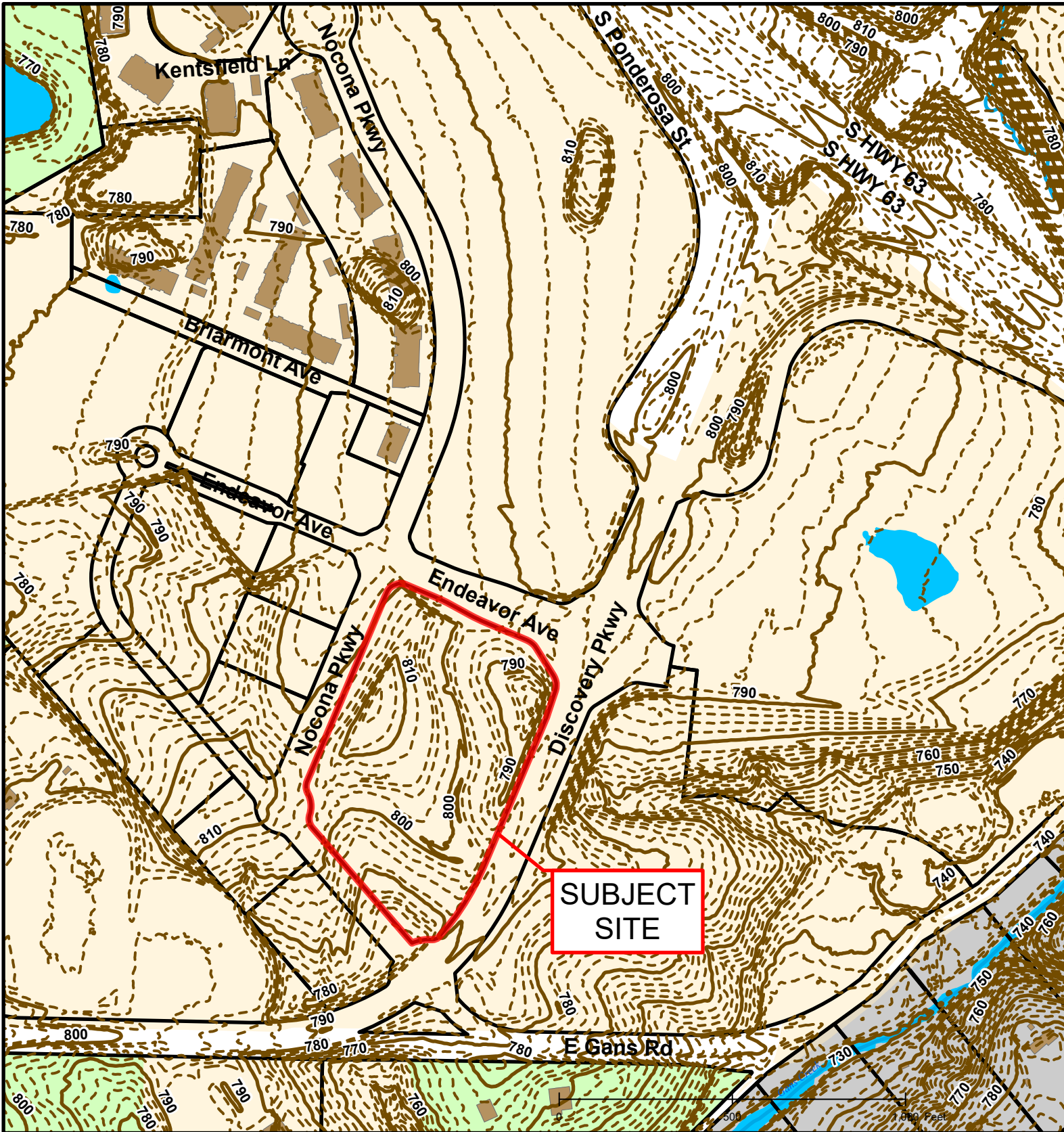


Created by The City of Columbia - Community Development Department

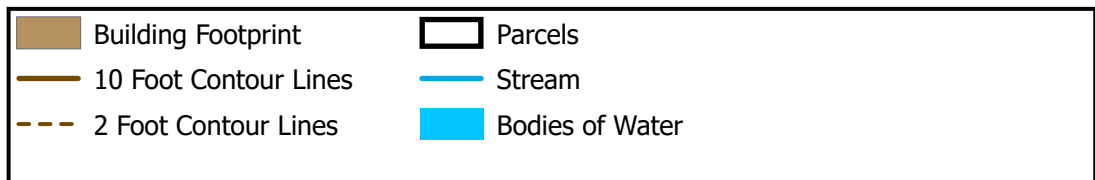
Parcel Data Source: Boone County Assessor

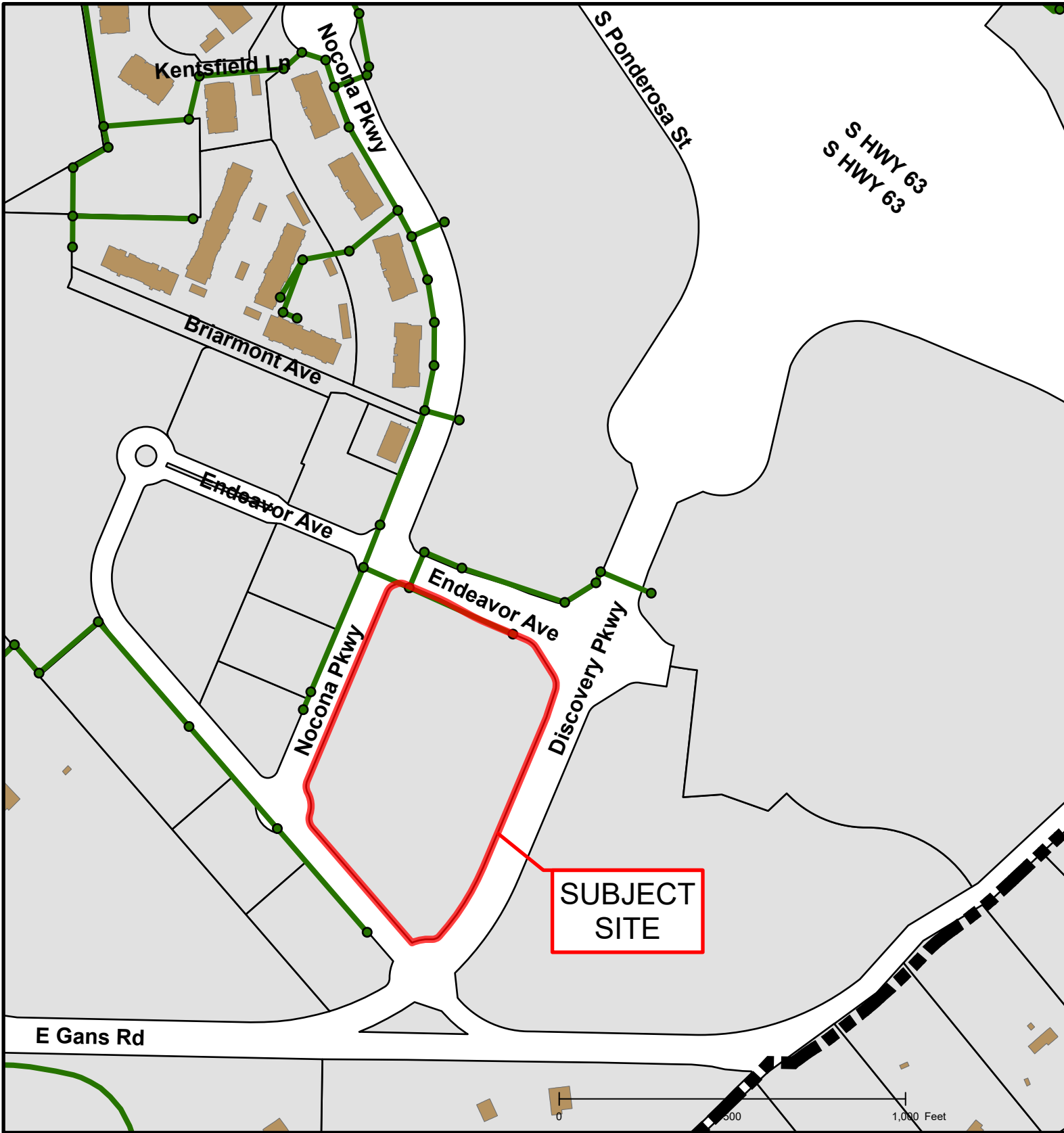
2021 Imagery: NearMap

Hillshade Data: Boone County GIS



Case # 06-2022: The Kitchen and Discovery Offices PD Plan





Case # 06-2022: The Kitchen and Discovery Offices PD Plan

