



August 9, 2024

Mr. Richard Stone, P.E.
Columbia Public Works
701 East Broadway
Columbia, MO 65201

RE: Professional Services Proposal
I-70 Plan Review
Columbia, Missouri

Dear Mr. Stone:

At your request, we have estimated the work involved to review MoDOT's design-build contractor plans for the Interstate 70 interchange improvements described below.

We understand the scope of work includes reviewing construction documents for the five locations noted below and as shown on the attached exhibit. The plans will be reviewed at the preliminary, 90-percent, and released for construction (RFC) plan stages. The scope of the plan review is limited as described below. We will prepare a comment summary letter as well as comments on a PDF copy of the plans for each location. We will also attend up to six meetings with MoDOT and/or their design-build contractor in Columbia or Jefferson City.

1. Business Loop 70 Ramp Roundabout
 - 1.1. General stormwater
 - 1.2. Pavement
 - 1.3. Alignment
 - 1.4. Pedestrian facilities
2. Conley Road & Business Loop 70 Roundabout/Intersection
 - 2.1. General stormwater
 - 2.2. Pavement
 - 2.3. Alignment
 - 2.4. Pedestrian facilities
3. Conley Road & U.S. 63 Underpass (unknown traffic control)
 - 3.1. General stormwater
 - 3.2. Pavement
 - 3.3. Alignment
 - 3.4. Pedestrian facilities
4. Pedestrian Facilities over I-70 - Route PP to Conley Road (includes overpass)
 - 4.1. Pedestrian facilities for materials
 - 4.2. ADA and general alignment/configuration of crossing locations
5. St. Charles Road overpass pedestrian facilities - from Clark Lane to Bull Run
 - 5.1. Pedestrian facilities for materials
 - 5.2. ADA and general alignment/configuration of crossing locations

Mr. Stone
August 9, 2024
Page 2

Our fee for these services will be on a time and materials basis with a not to exceed amount of \$ 81,000. We will start immediately after receiving your notice to proceed and copies of the plan documents. Based on the attached contractor schedule, our comments will be complete within 30 days of receiving preliminary plans and within two weeks of receiving 90% plans and RFC plans.

Additional services that we could provide, as required, include: attending meetings and making presentations to Columbia boards and commissions or the City Council; and electrical engineering related review of traffic signal equipment plans. Any tasks in addition to those specifically described in the above scope of work would be billed as extras using our standard fee schedule or negotiated separately.

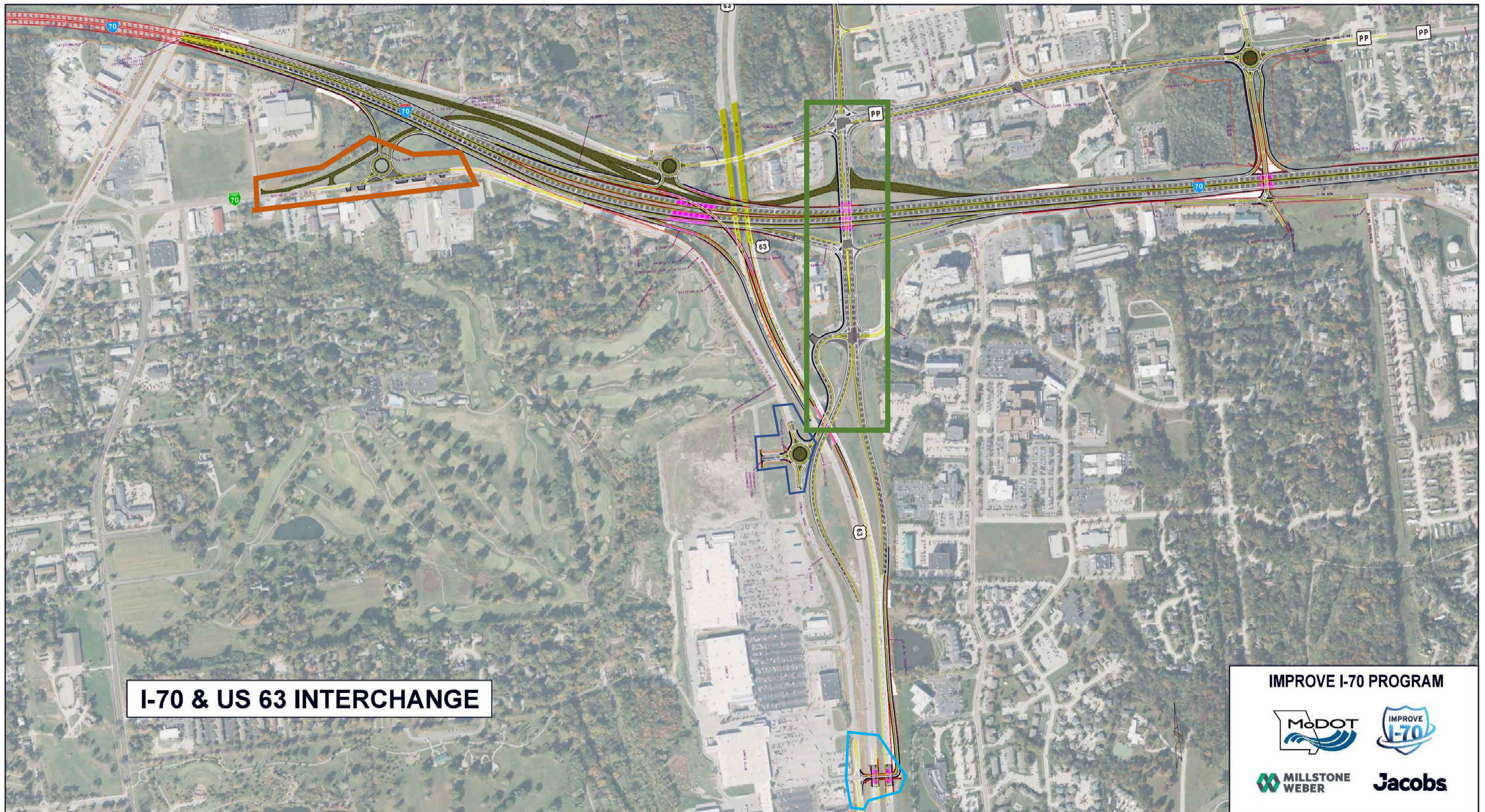
Thank you for the opportunity to submit this proposal. Once again, Engineering Surveys & Services looks forward to putting our more than 70 years of experience in Columbia to work for you.

Sincerely,

A handwritten signature in black ink that reads "Benjamin A. Ross". The signature is written in a cursive style.

Benjamin A. Ross, P.E., PTOE

Enclosures: I-70 & US 63 Interchange Exhibit
Millstone Weber DBT Schedule



I-70 & US 63 INTERCHANGE

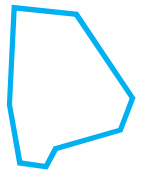
IMPROVE I-70 PROGRAM



Business Loop ramp roundabout
Plan review – general stormwater, pavement, alignment and pedestrian facilities



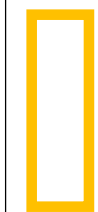
Conley & Business Loop roundabout
Plan review – general stormwater, pavement, alignment and pedestrian facilities



Conley & underpass intersection
Plan review – general stormwater, pavement, alignment and pedestrian facilities – note: unknown traffic control



PP to Conley pedestrian facilities (includes bridge)
Plan review of pedestrian facilities for materials, ADA and general alignment/configuration of crossing locations



Off map – St. Charles overpass generally plans for Clark Lane to Bull Run
Plan review of pedestrian facilities for materials, ADA and general alignment/configuration of crossing locations

Millstone Weber DBT
 Bridge Design Schedule

			Enhancement Deadline	Submit Preliminary	Submit 90%	Submit RFC		NOTES
BR-12	NB 63 over Conley - Widening		9/13/2024	10/23/2024	3/12/2025	4/4/2025		
BR-13	SB 63 over Sams Club to 63 Connector NB - New		5/6/2024	5/6/2024	6/19/2024	7/11/2024		Submit Girder Package 6/3/24
Walls 13-14	MSE Walls at Bridges 13 and 14		5/6/2024	5/6/2024	6/19/2024	7/11/2024		
BR-14	NB 63 over Sams Club to 63 Connector NB - New		5/6/2024	6/4/2024	9/9/2024	10/2/2024		twin to bridge 13
BR-15	Rte 63 Connector over I-70 - A0800 - Replace		9/20/2024	9/30/2024	2/17/2025	3/12/2025		Changes to proposed sidewalk need to be known by 8/16/24
Walls 15	MSE Walls at Bridge 15		9/20/2024	9/30/2024	2/17/2025	3/12/2025		
BR-16	I-70 WB over Clark Lane Connector - New		6/14/2024	6/4/2024	8/29/2024	9/24/2024		
BR-17	I-70 EB over Clark Lane Connector - New		6/14/2024	9/18/2024	12/23/2024	1/17/2025		twin to bridge 16
BR-19	E. St. Charles Rd over I-70 - L0908 - Replace		11/15/2024	10/9/2024	2/26/2025	3/21/2025		Changes to proposed sidewalk need to be known by 8/23/24
Walls 19	MSE Walls at Bridge 19		11/15/2024	10/9/2024	2/26/2025	3/21/2025		
	Soundwalls		12/27/2024	2/28/2025	4/11/2025	5/19/2025		