



#154-2020: City of Columbia Corrective C-2 Rezoning (110 E. Ash St.)

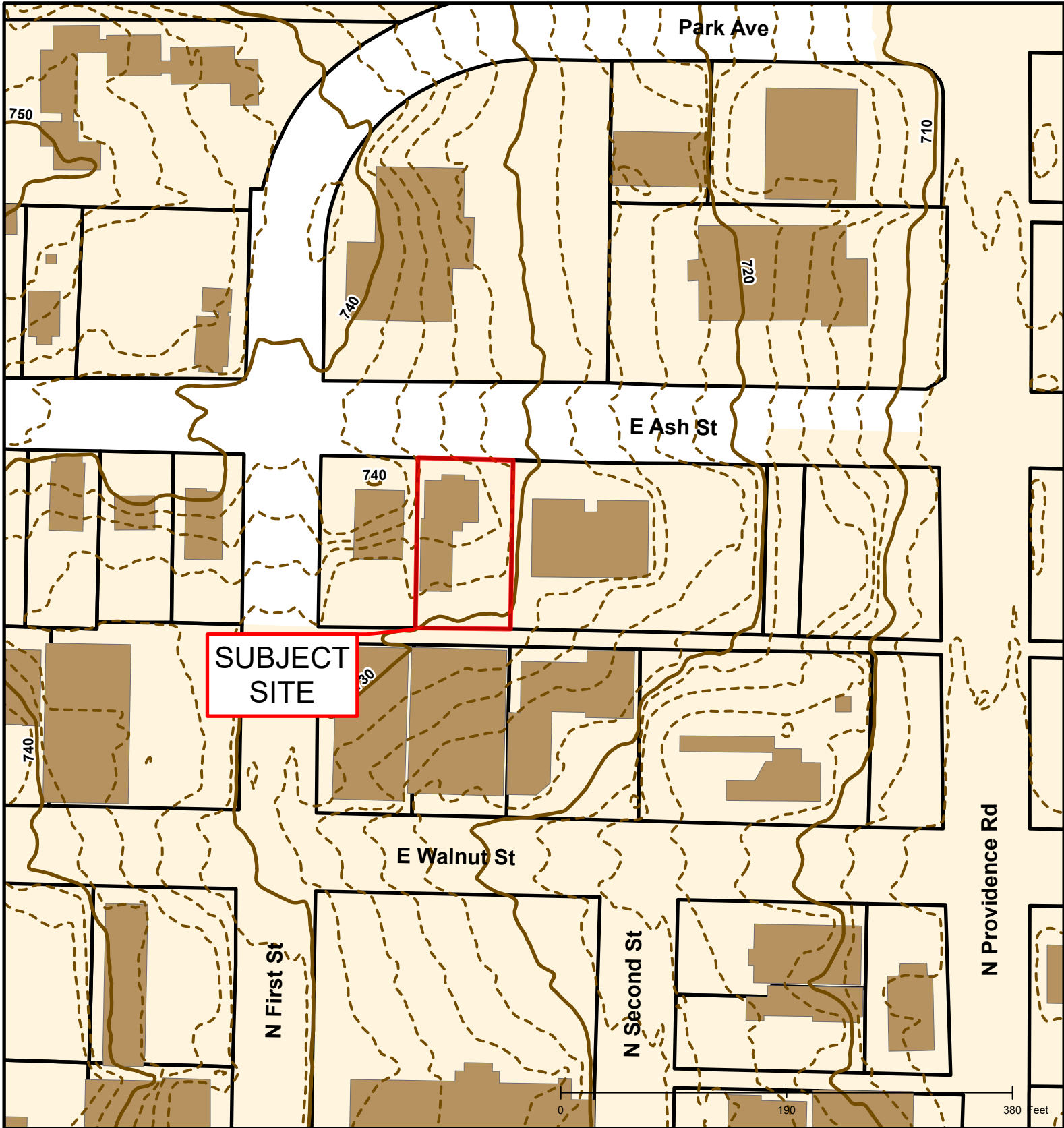


Created by The City of Columbia - Community Development Department

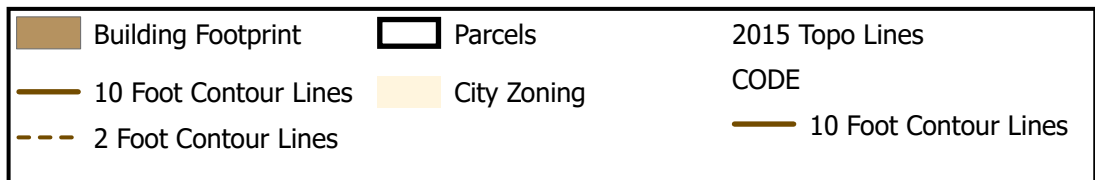
Parcel Data Source: Boone County Assessor

2017 Imagery: Boone County Assessor's Office

Hillshade Data: Boone County GIS



#154-2020: City of Columbia Corrective C-2 Rezoning (110 E. Ash St.)





#154-2020: City of Columbia Corrective C-2 Rezoning (110 E. Ash St.)

