

Columbia Police Department Molly Bowden Neighborhood Policing Center: Art Proposal

Artist: Beth Nybeck

During my design phase, I had an opportunity to meet with representatives from various divisions of the Columbia Police Department. We discussed the history of Columbia, the philosophy CPD takes on law enforcement, the issues that currently face your community and the cultural demographic surrounding the new Neighborhood Policing Center. This active conversation was formative in my understanding of the work CPD is doing in the community. I was grateful for the time the officers were able to give towards the project.

I left that meeting feeling a great sense of complexity for humanity and the task to keep communities safe and thriving. There was a mixture of hopefulness for the future, frustration, and a passion for helping and serving the community. When it comes down to it, the best way law enforcement happens is through relationships and trust with the community. In order for this to happen, you need active, consistent dialogue within neighborhoods.

Reflecting on these conversations, I was most inspired to create a concept that highlights the hope for the future and the important role law enforcement plays on helping the future to flourish. Please review my design concept and let me know what additional questions you may have. It was an honor to dream up these concepts for you.

Sincerely,

A handwritten signature in black ink, appearing to read "Beth Nybeck".

Beth Nybeck

Beth Nybeck Public Art Proposal
Working Title: *Indivisible*

Statement:

The Police Force plays a special and specific role within our community. They protect and serve, so that we can maintain life, peace and growth. Much of my art is inspired by the natural world. I found an element within the natural world I consider to be similar in functionality to the police force. It served as my inspiration for this proposal.

The tiger lily seedpod (to the right), is a structure that forms around the seeds of the tiger lily plant. This protective layer offers the seeds shelter from birds and insects that might eat them. The skeletal structure offers the seeds light and air. The seeds will rot within a tight, confined space without ventilation. Over the winter and spring months, the seedpod gets thinner, until eventually it breaks open spilling the seeds onto the ground. The seeds will find their way into the soil to grow new life. The seedpods aren't a sure guarantee against nasty storms or the peskiest of birds, but they do their best to ensure some of the seeds sprout into beautiful, bright plants in the spring.



I felt the seedpod was a beautiful metaphor for the role the police force plays within our communities. They do their best to protect our future and allowing life to flourish, while maintaining transparency and dialogue. Officer Molly Bowden, gave her life serving and protecting the community. The seedpod structure is also symbolic of community and family. A network that works together in collaboration to help bring about a stronger and more brilliant future. I've created a geometric sculpture of a seedpod. The design is made up of eighty-one panels that have openings cut into the sides, allowing light and air to pass through the artwork. Nestled inside of the seedpod is a stand-alone seed.

This sculpture includes an element of community engagement. This artwork is spirited around hope for the future. It would be my intention to ask community members, Officers of the CPD, and a special invitation to Molly Bowden's friends and family to answer the prompt: "Tell me about a future you hope for". I would take their responses and have them cut into the solid panels on the interior seed. I want the community's words to be offered up as seeds for our future. The seed will have a different finish on the surface, making it stand out from the seedpod and be illuminated at night to show the cut-out words from the surface.

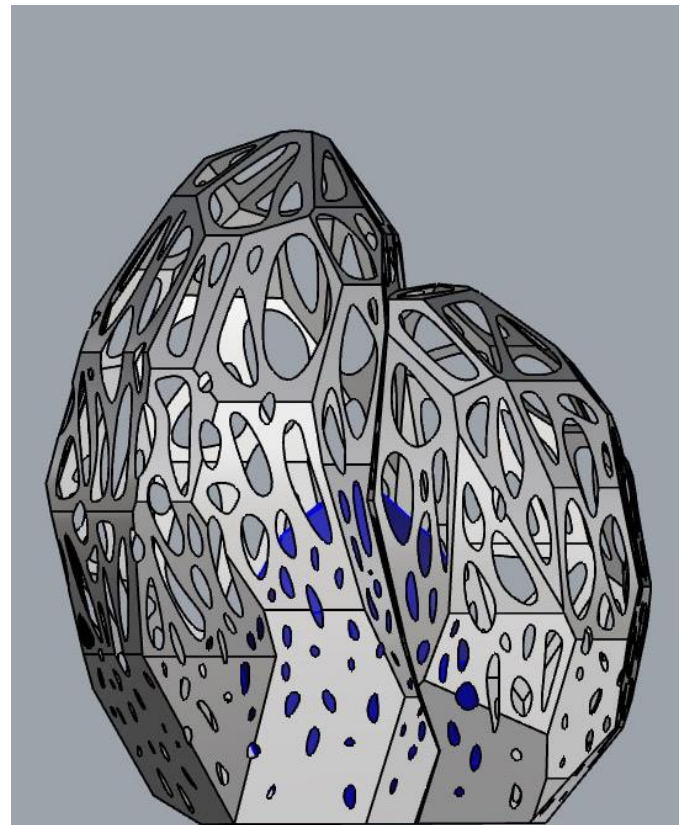
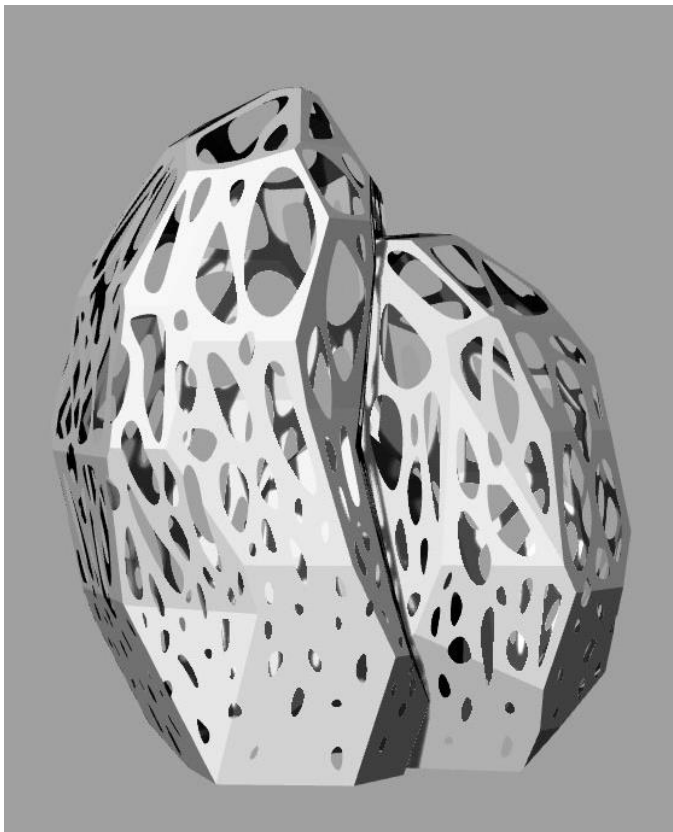
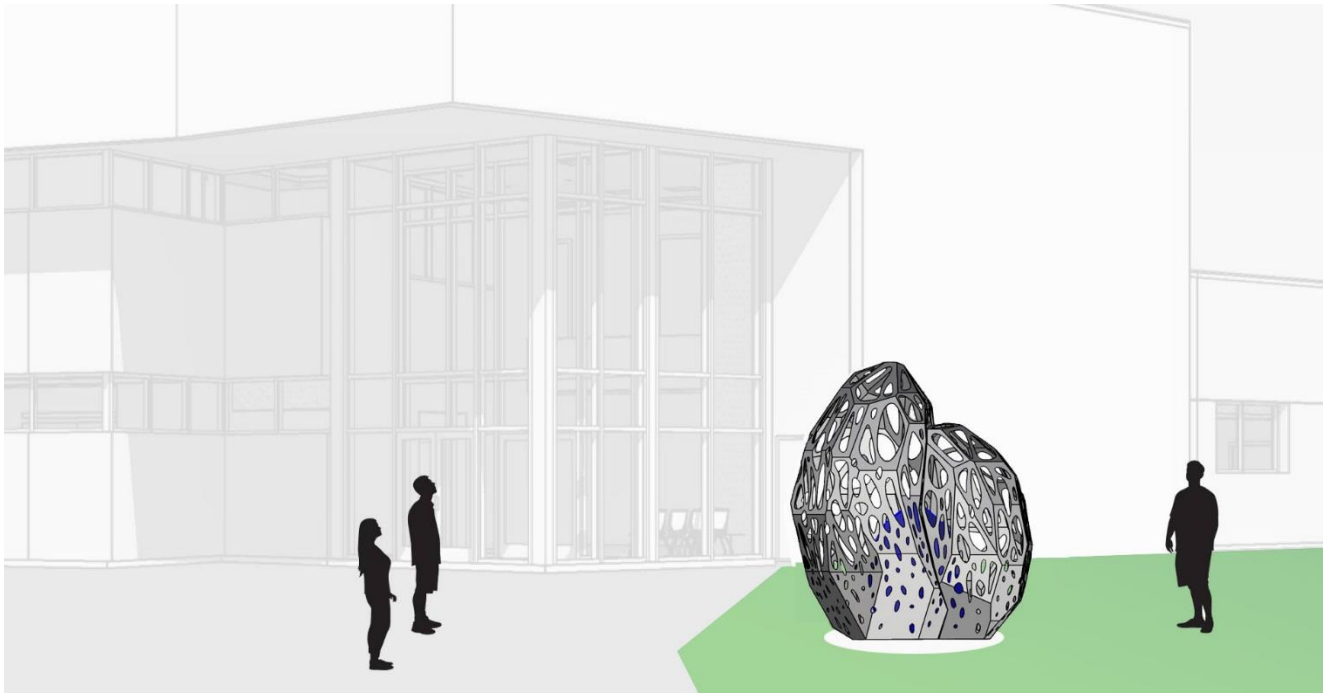
Details:

Material: Stainless Steel (The interior seed will be powder-coated gold.)

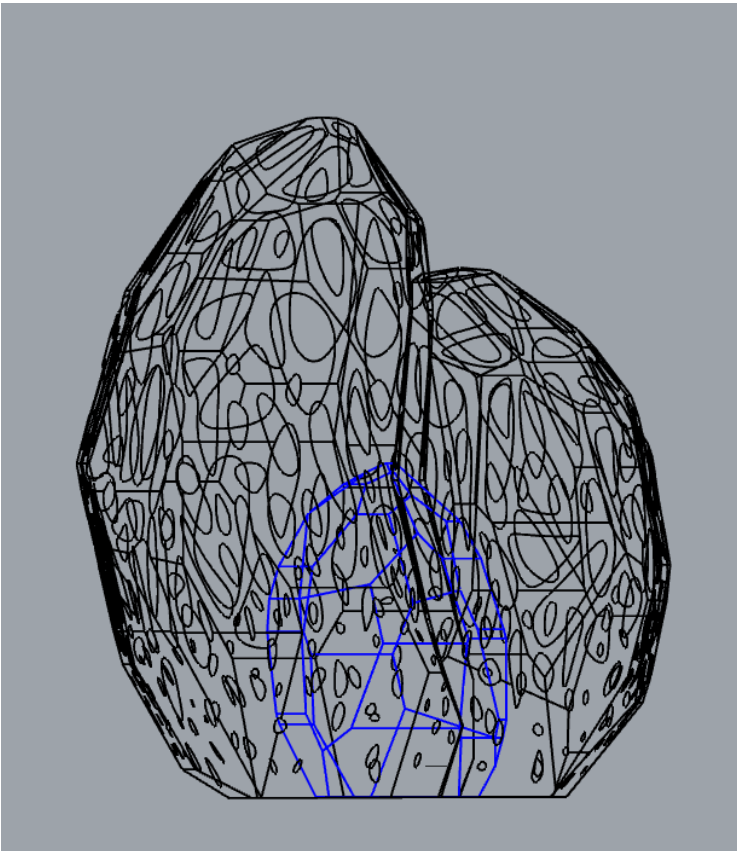
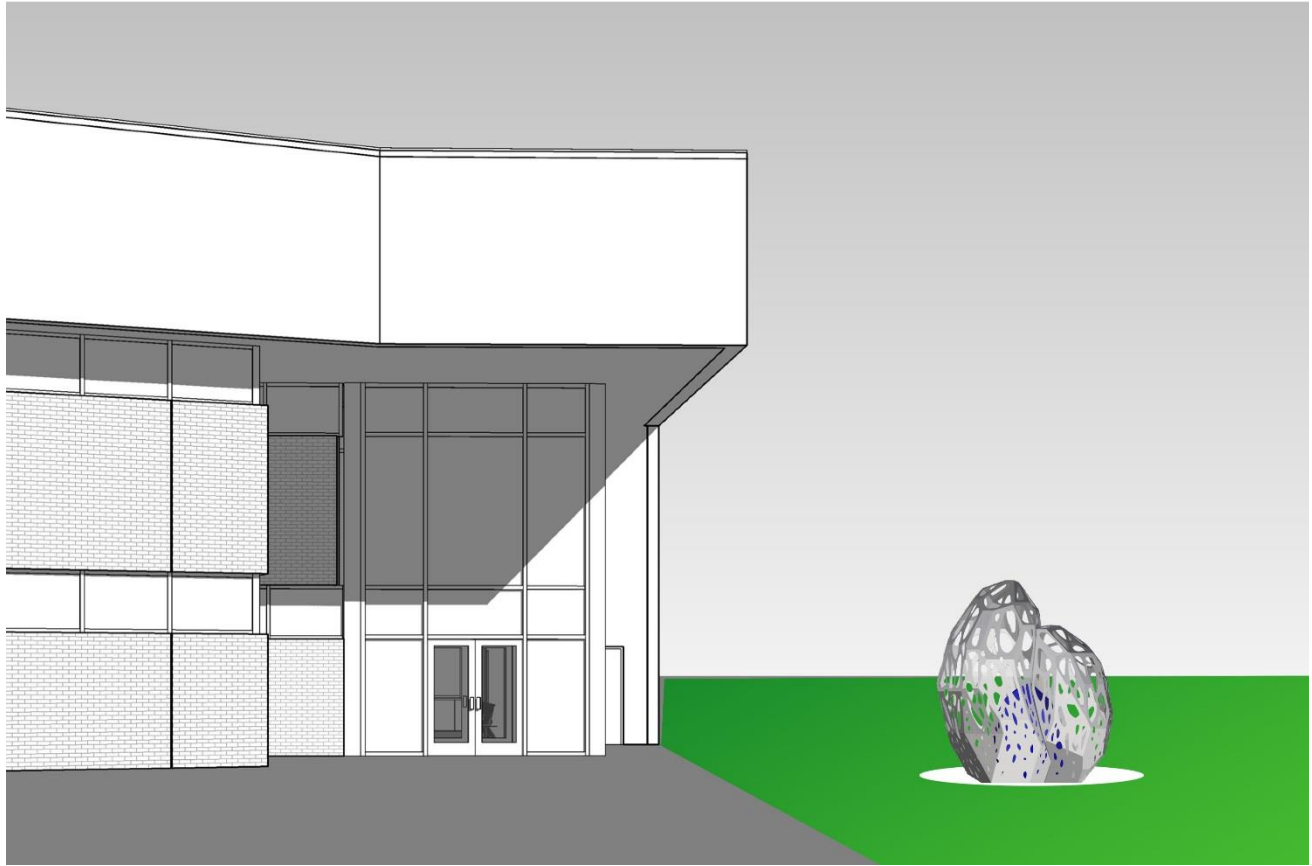
Installation: Concrete Slab, approximately 8ft diameter circle with embedded lighting elements. The sculpture will bolt to the concrete pad, with the base flange and bolts facing the interior of the artwork.

Location: Northwest corner of the building (to the right as you enter in the main entrance)

Scale: 10' x 10' x 9' (HWD)



**Please note, the interior seed will not be painted blue. I have shown it in blue to best help distinguish the difference between the exterior structure and interior.



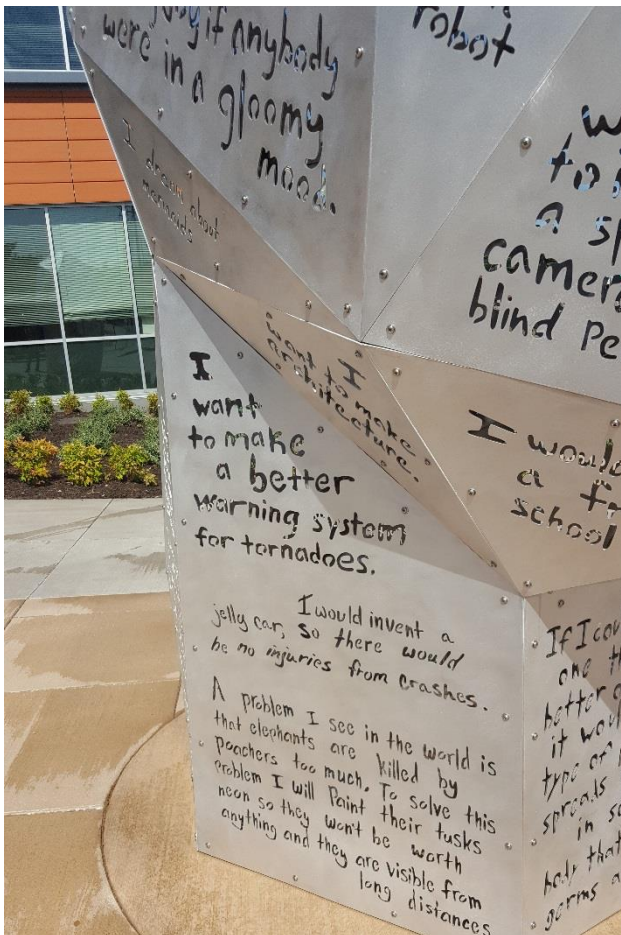
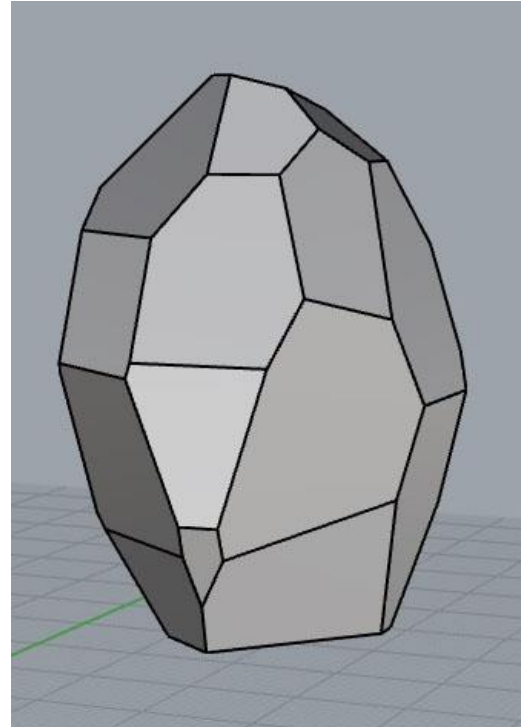
This is a transparent sketch of the sculpture. In gray, you can see the form of the seedpod skeleton. In blue, you see the central seed. The center seed, stands at 5ft tall and the tallest seedpod frame stands at 10ft.

The Interior Seed:

As I've mentioned above, the sculpture contains a seed centered on the inside of the sculpture (see image on the right). In the previous renderings, I've shown it in blue to make it easier to see. The seed will be the keeper of the hopes and dreams submitted from the community members.

I intend on taking the written responses from the community and having them cut out of the solid panel surface of the seed. In the image below, I have given an example of a past project of mine that has handwritten message cut out of the surface. The sculpture is entitled "Seeker," and is located in Kansas City.

The seed will be illuminated from the inside and allow light to shine forth from the words on the surface. The seed surface on the interior will have a distinct difference from the exterior pod skeleton.



Safety & Vandalism:

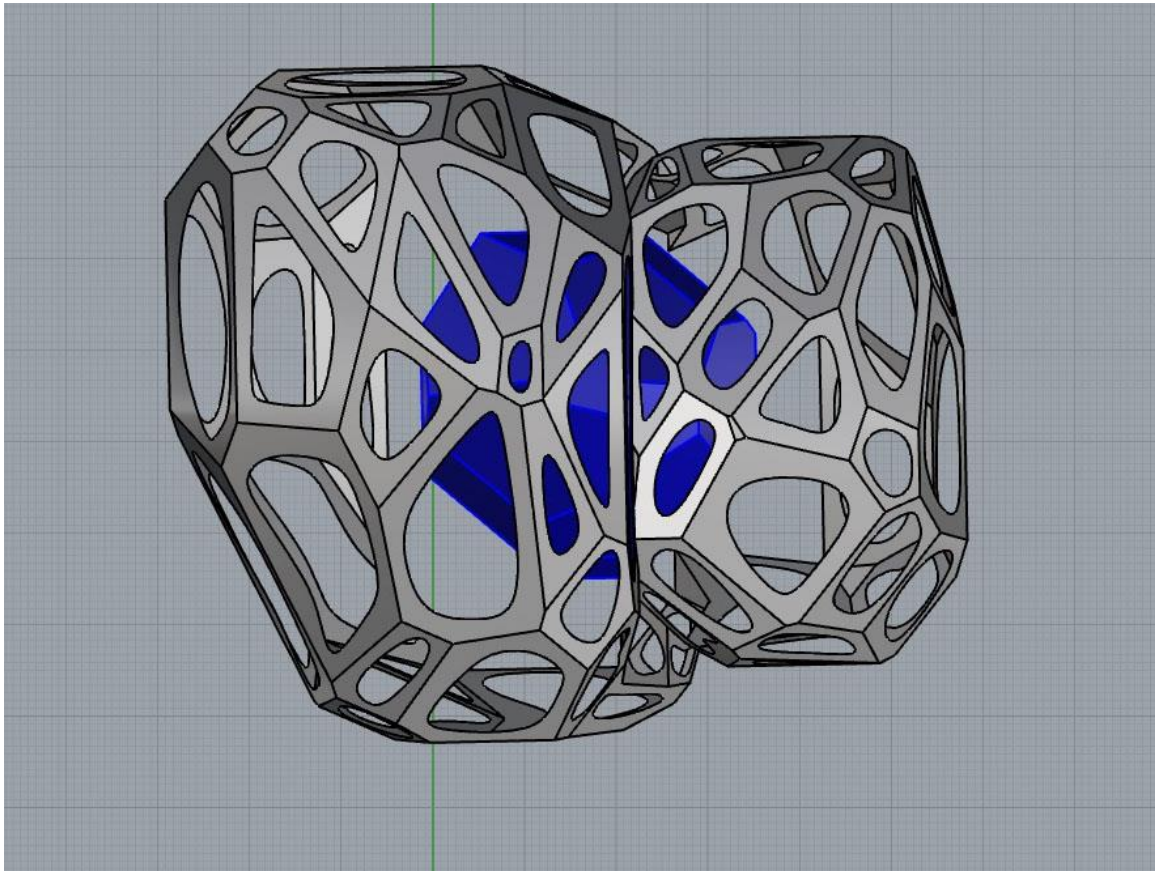
As a public artist, safety and vandalism are important considerations in every design. To help protect both the artwork and viewership from harmful interactions, there are a few safety guards put in place. The artwork will be made from a thin-gauge stainless steel. The gauge of metal will not be comfortable to climbing hands. If the metal was thick and robust, it would provide a comfortable and sturdy hand-hold for people. The metal will be strong enough to be structural but won't invite climbing hands.

The surface of exterior sculpture has numerous holes cut out of the surface, allowing light and air to pass through the piece. The holes will be designed to be smaller and fewer towards the bottom (designed to deter climbing) and larger towards the top. The intent is to make the interior seed pod visible and read-able through the openings.

There will be a posted sign next to the artwork that reads, "To maintain integrity of the artwork and for your safety: Do Not Climb".

There is no sure protection against vandalism within public spaces. However, there are a number of deterrents you can put in place. The placement of the artwork will be in front of the police station (which is staffed 24/7) and will be well-lit. This location is prominent and exudes an inherent protective nature. There will also be exterior cameras that will be visible from the artwork.

This is a bird's eye view at the sculpture. You are able to see two pods coming together, in gray, with the seed centered in the middle, in blue.



LOCATION:

The proposed location for is in the northwest corner of the building, to the right of the main entrance. The image above depicts the footing (8ft diameter pad) with the red footprint of the sculpture. The pad will have lighting embedded into the concrete to illuminate the artwork at night.

