

# Case # 97-2023 - 3901 Highway PP

## Permanent Zoning



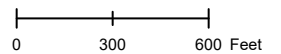
- Columbia City Limit
- City Zoning
- City Property
- Parcels

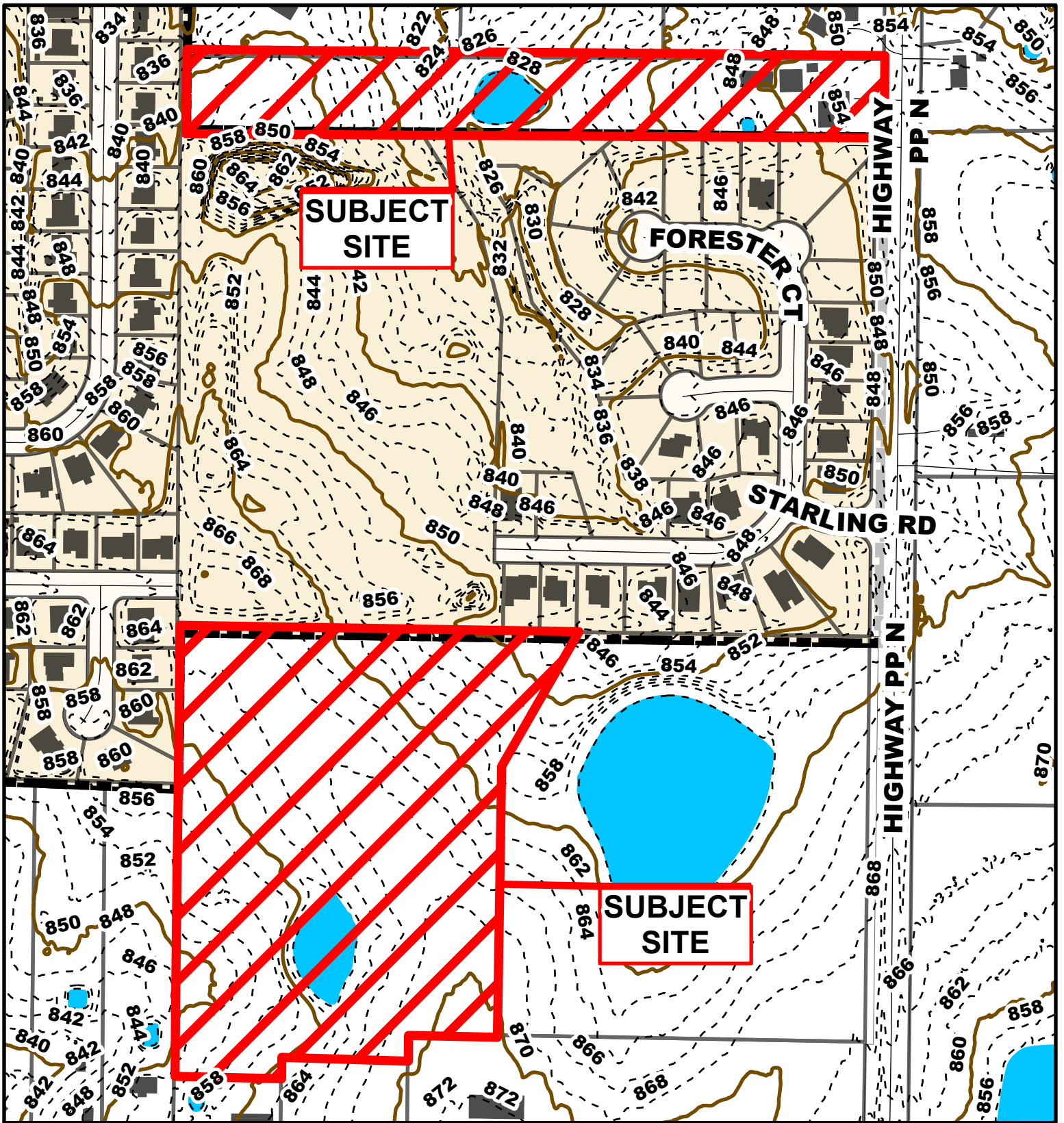


Parcel Data Source: Boone County Assessor

Created by The City of Columbia - Community Development Department

2022 Imagery: NearMap

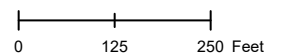


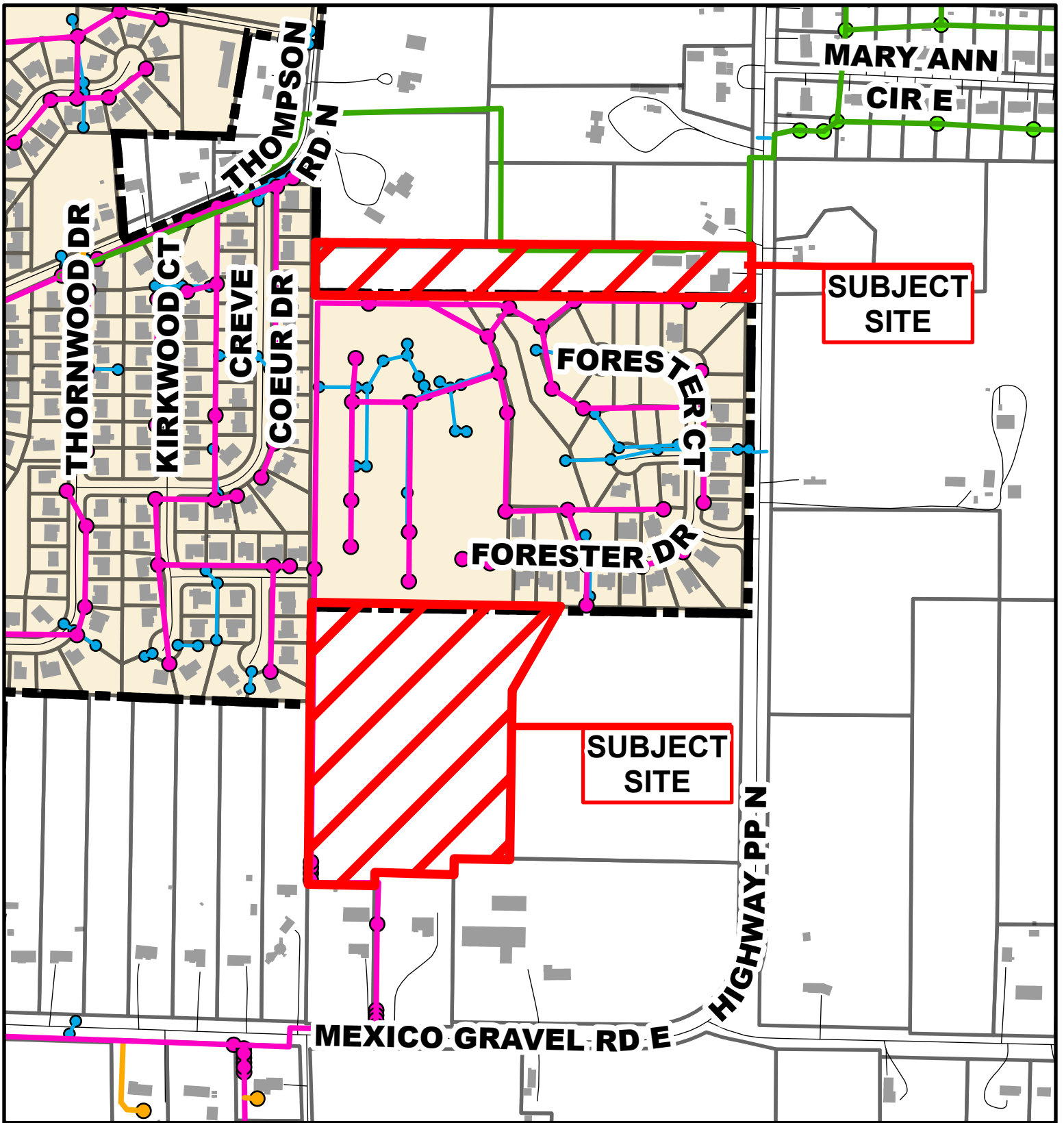


**Case # 97-2023 - 3901 Highway PP**  
**Permanent Zoning**



- 10 Foot Contour Lines
- 2 Foot Contour Lines
- City of Columbia
- Parcels





## Case # 97-2023 - 3901 Highway PP

### Permanent Zoning



- City Sanitary Line
- City Storm Lines
- BCRSD Sanitary Line
- Parcels
- Private Sanitary Line
- Columbia City Limits

