

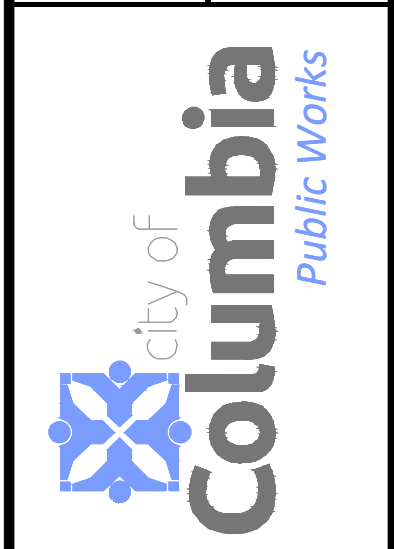
c:\caddproj\traffic\calming\hulen\_dr\_traffic\_calming.dwg

No.	Date	By	Revision

# HULEN DRIVE TRAFFIC CALMING PLAN

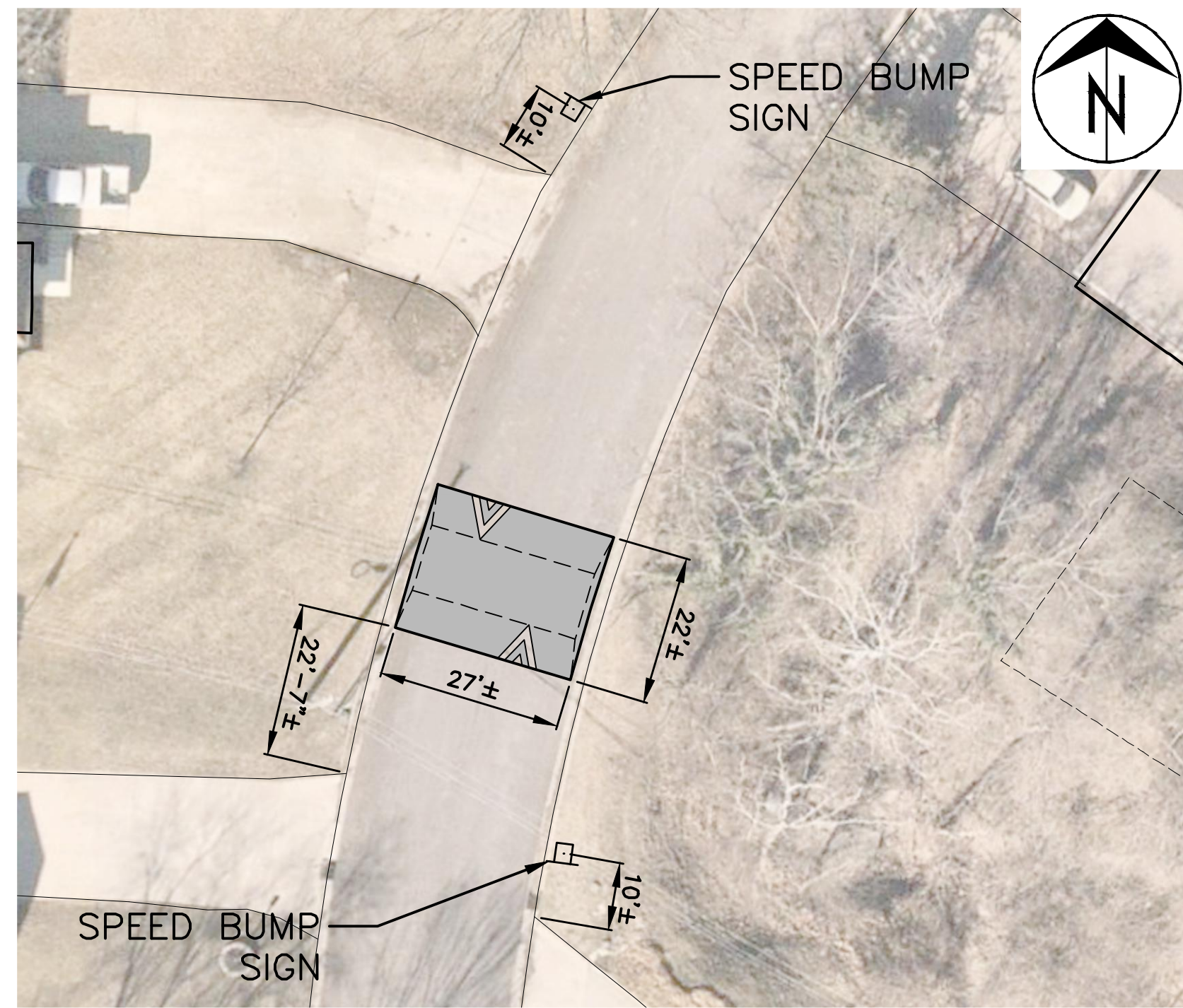
**Mission**  
Provide safe, sustainable infrastructure that promotes positive communities.

701 East Broadway  
P.O. Box 6015  
Columbia, MO 65205  
(573) 875-2489

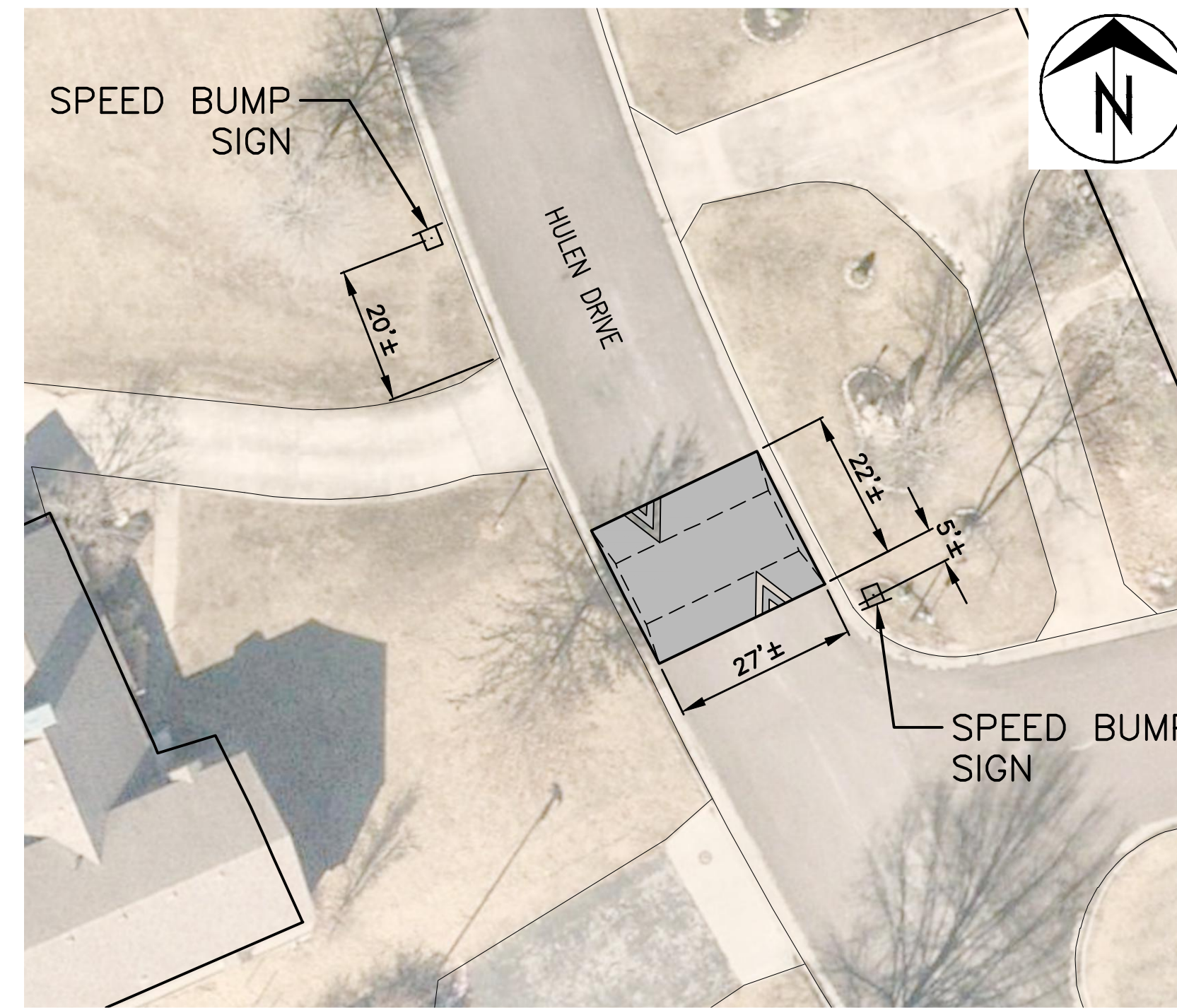


Shane Steven Crech  
Registered Professional Engineer  
PE-2007011061

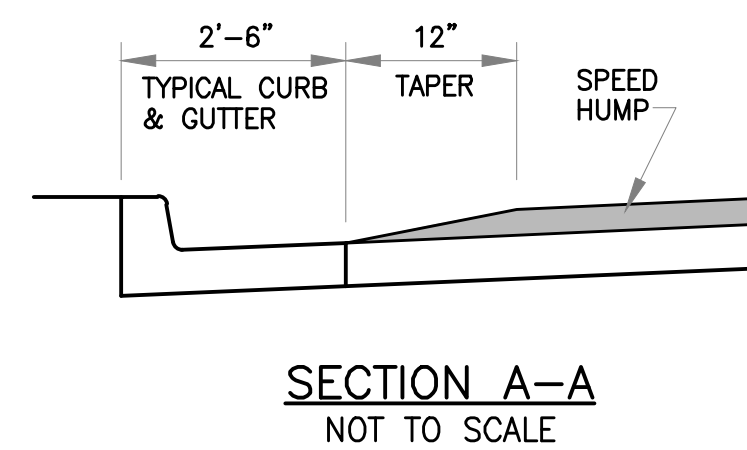
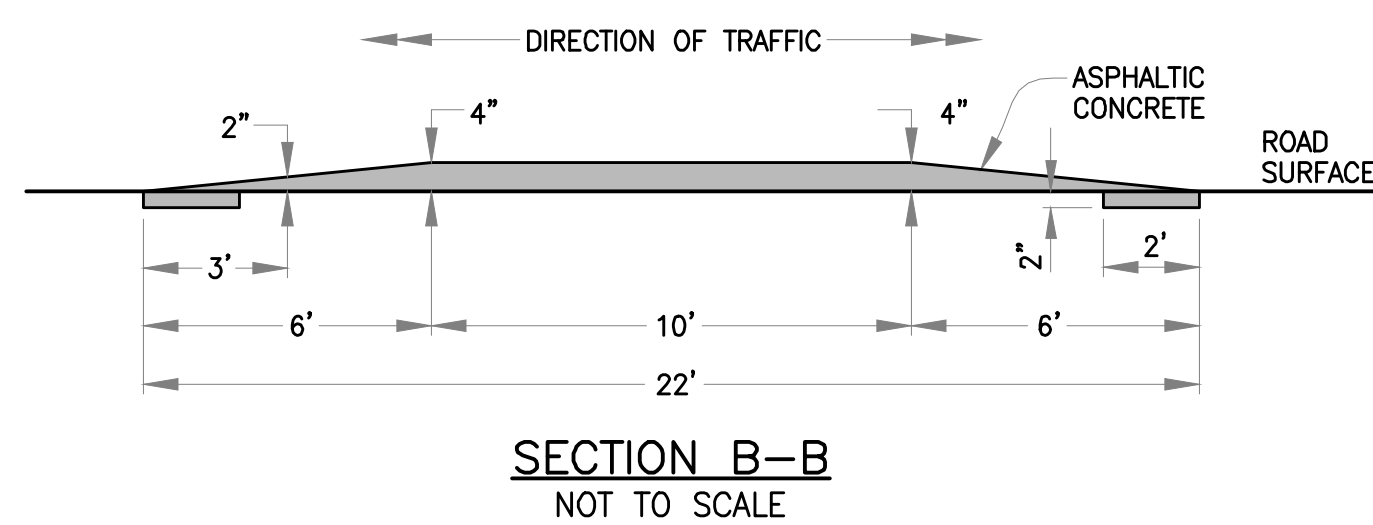
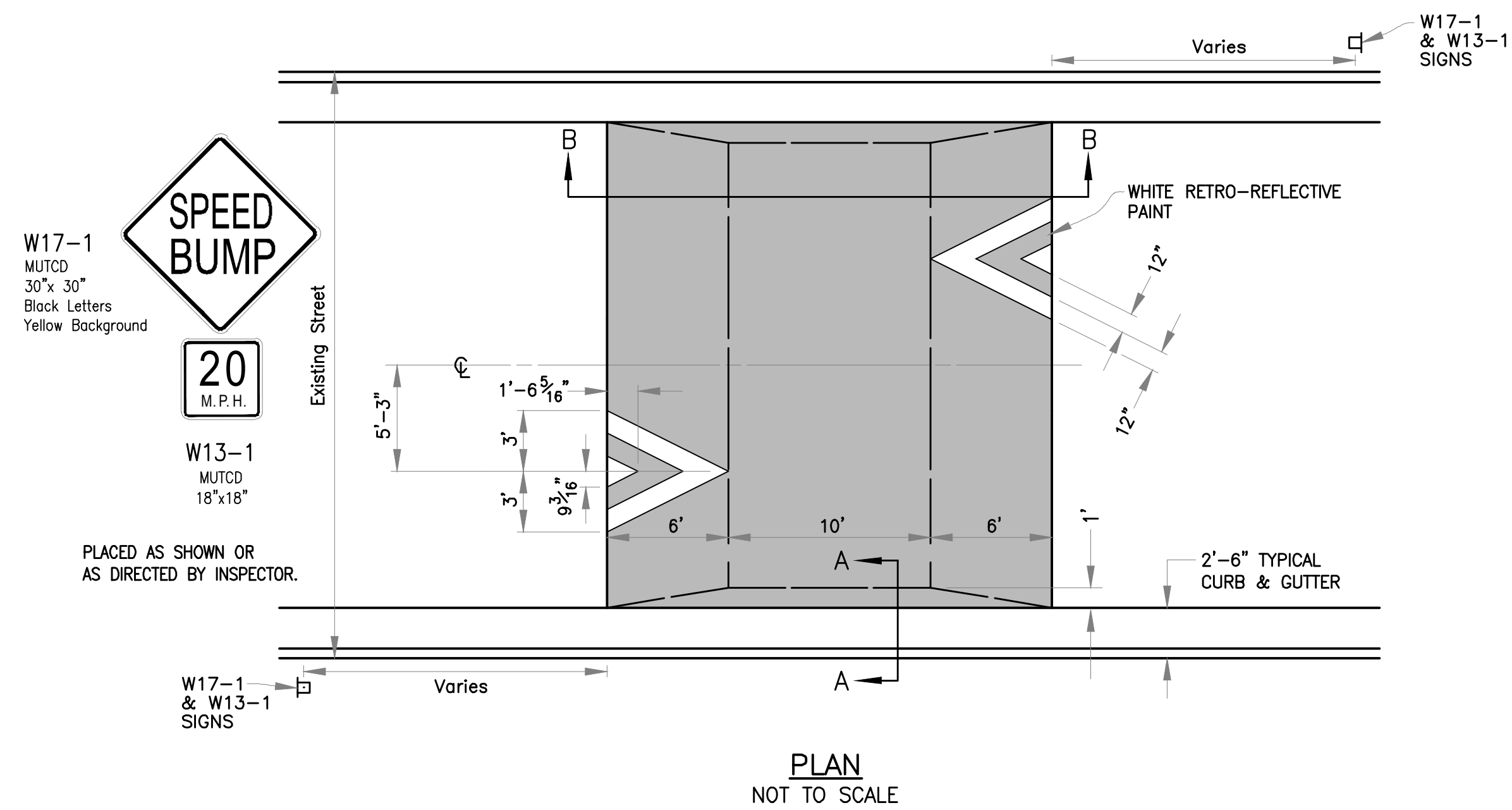
File No.  
Scale: 1"=30'  
Date: 10/26/2023  
Des. A.S.B.  
Dwn. S.A.W.  
Chk. J.D.R.



**907 HULEN DRIVE**  
1" = 20'



**1104 HULEN DRIVE**  
1" = 20'



**SPEED HUMP**  
NOT TO SCALE

No.	Date	By	Revision

**HULEN DRIVE TRAFFIC CALMING**  
Speed Humps

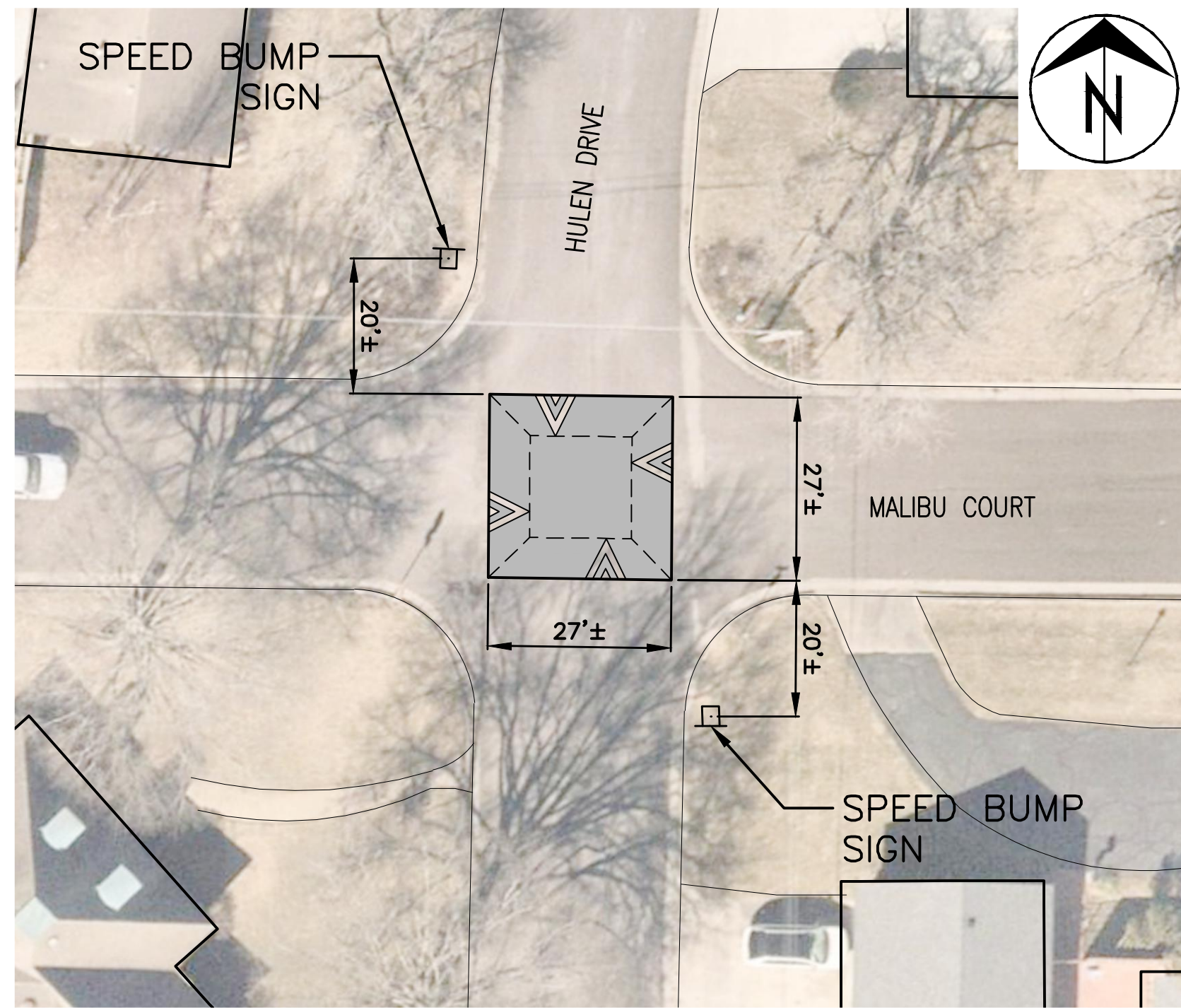
**Mission**  
Provide safe, sustainable infrastructure that promotes positive communities.

701 East Broadway  
P.O. Box 6015  
Columbia, MO 65205  
(573) 875-2489

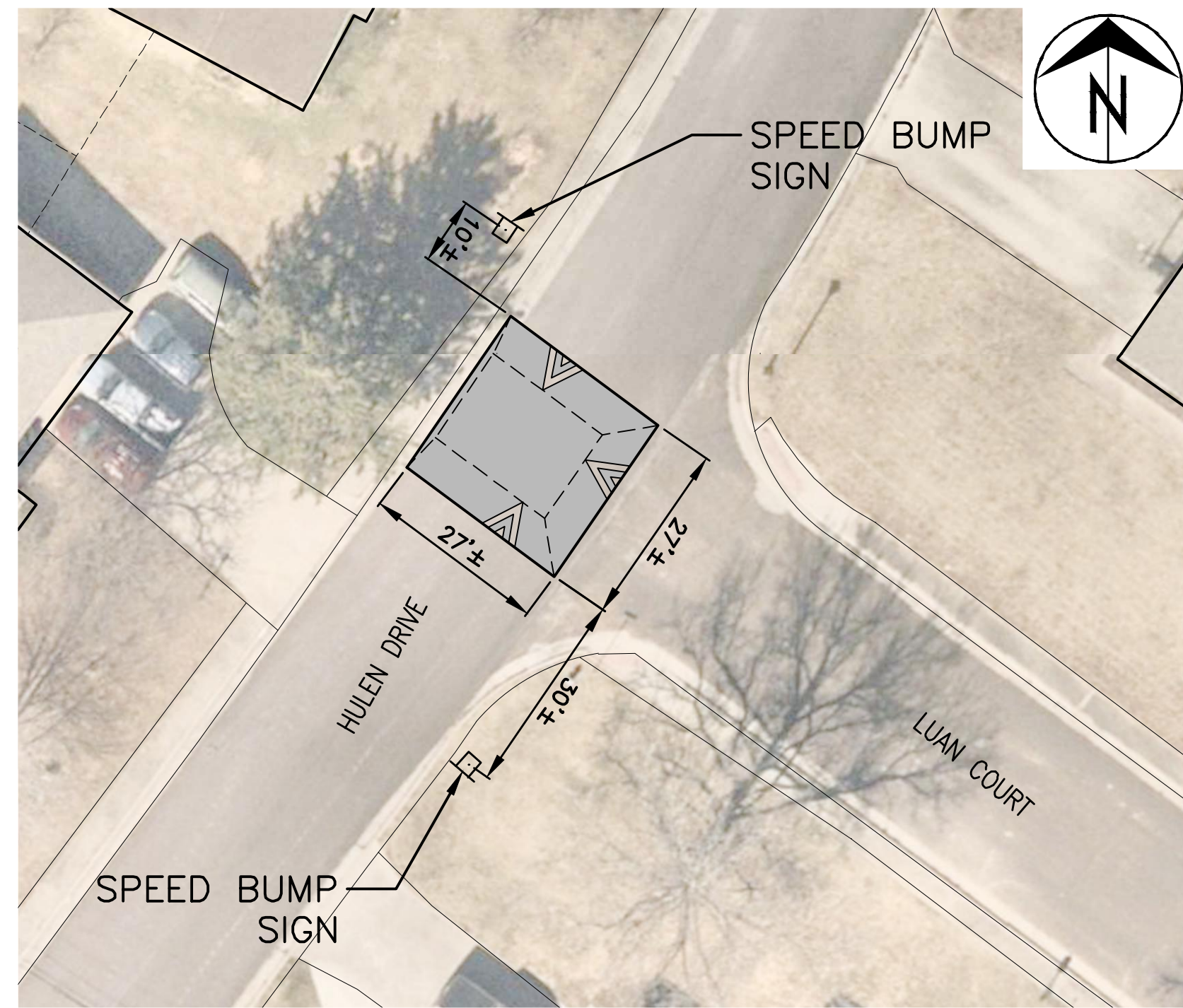


Shane Steven Creech  
Registered Professional Engineer  
PE-2007011061

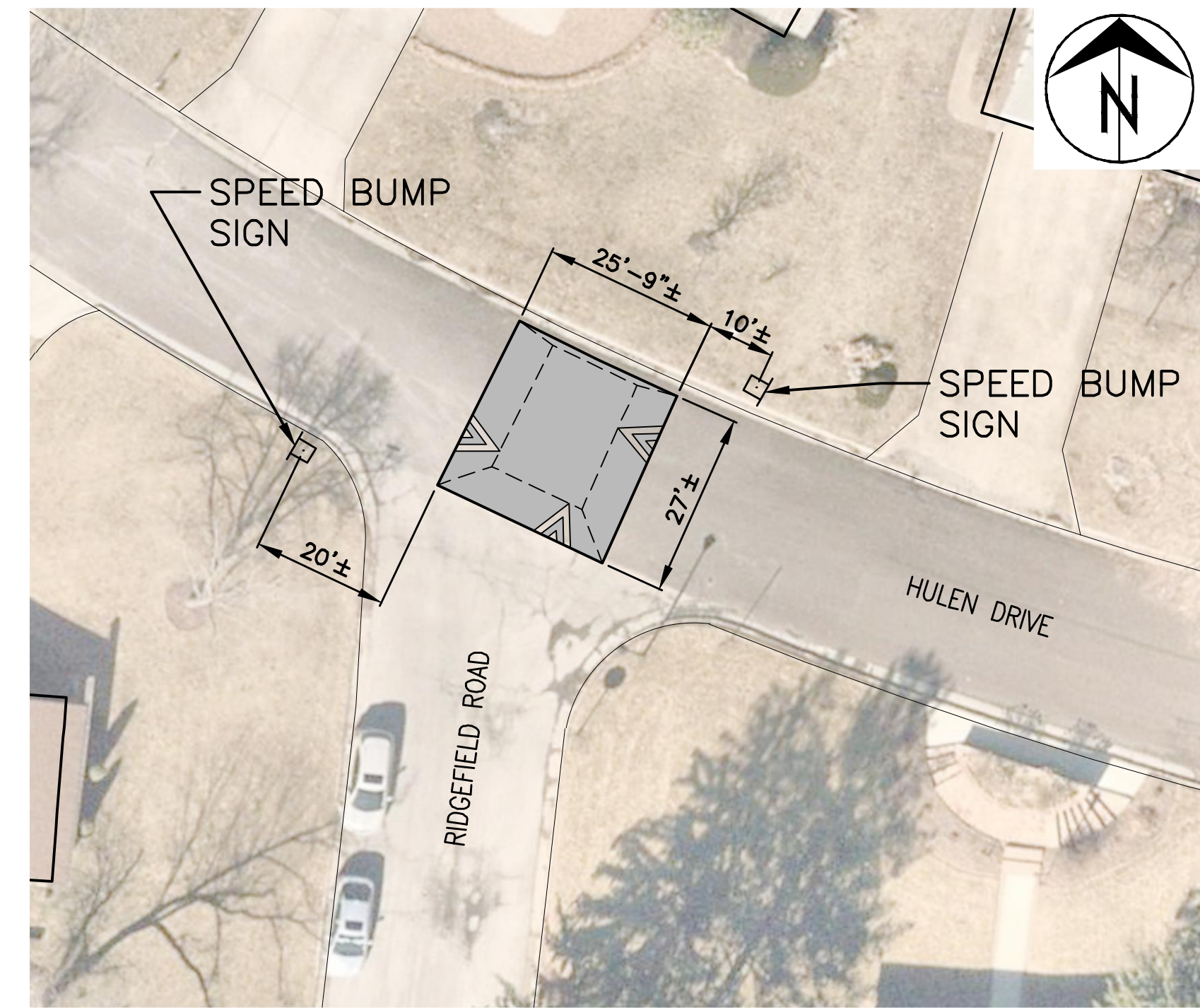
File No.	
Scale:	As Shown
Date:	10/26/2023
Des.	A.S.B.
Dwn.	S.A.W.
Chk.	J.D.R.



**HULEN DRIVE AND MALIBU COURT**  
1"=20'

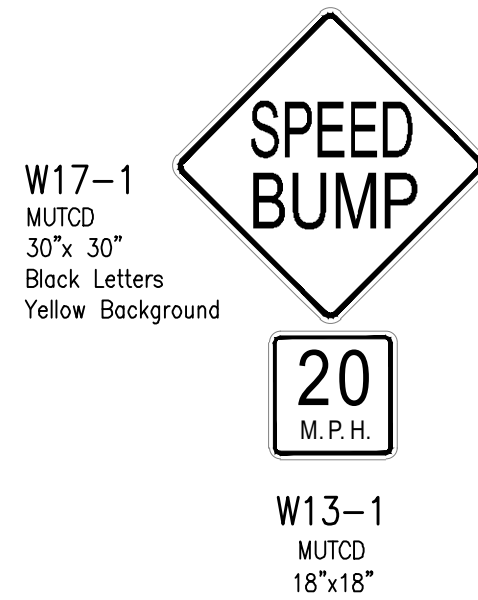


**HULEN DRIVE AND LUAN COURT**  
1"=20'

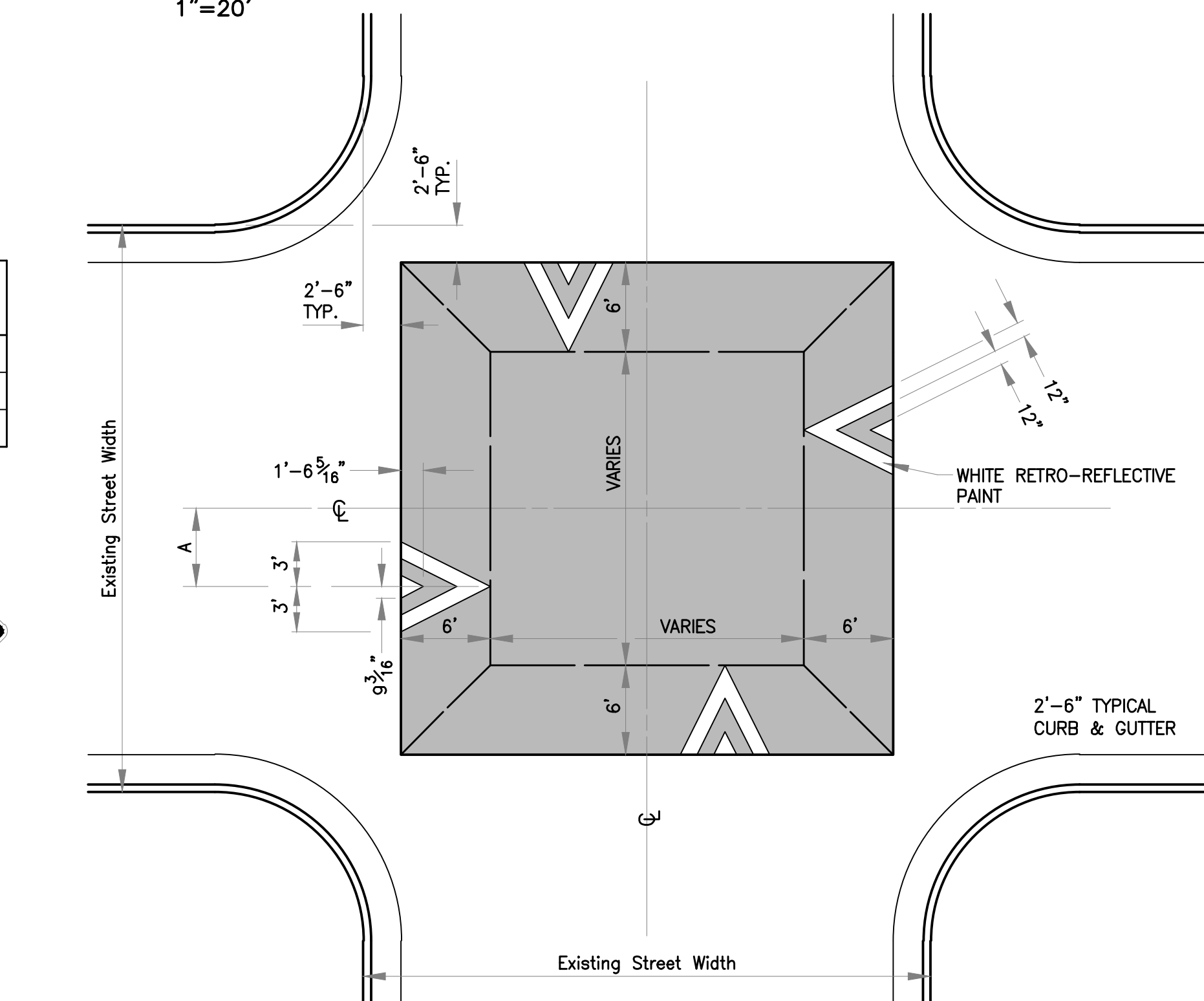


**HULEN DRIVE AND RIDGEFIELD ROAD**  
1"=20'

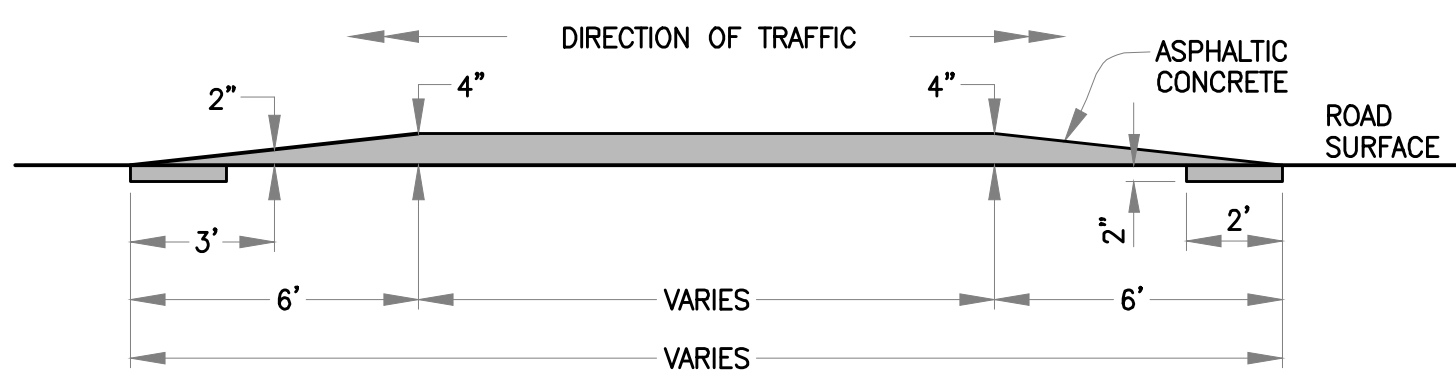
Existing Street Width (Back of Curb to Back of Curb)	A
38' & wider	5'-3"
between 32' & 38'	3'-9"
32' & narrower	3'-2"



PLACED APPROX. 30'  
BEFORE TABLE OR AS  
DIRECTED BY INSPECTOR.

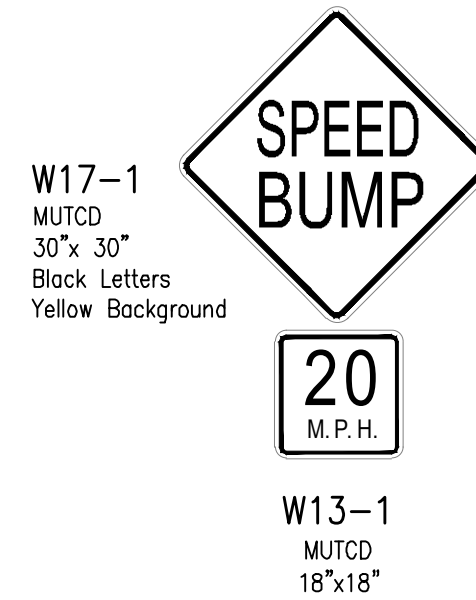


**PLAN**  
NOT TO SCALE

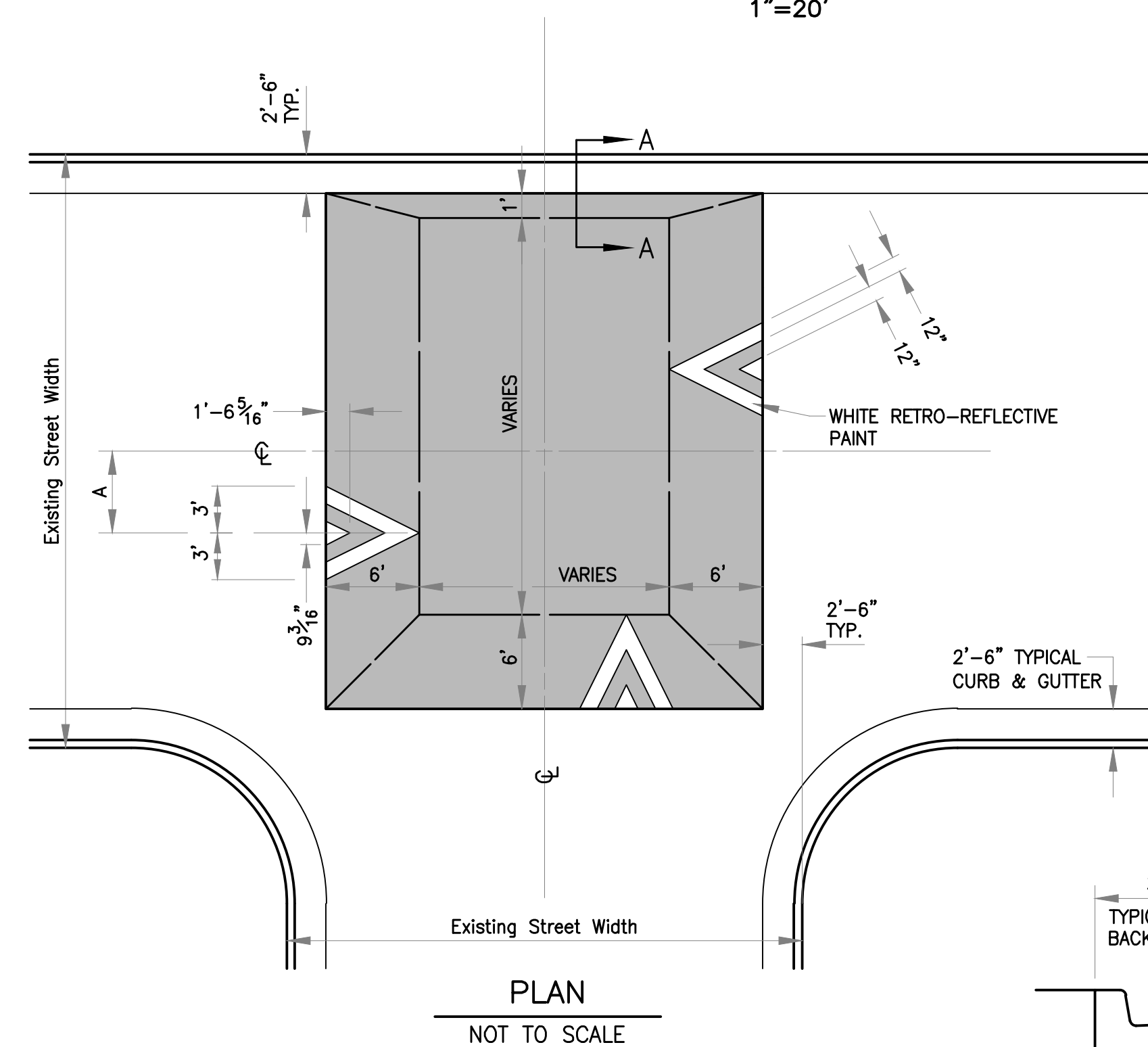


**SPEED TABLE**  
NOT TO SCALE

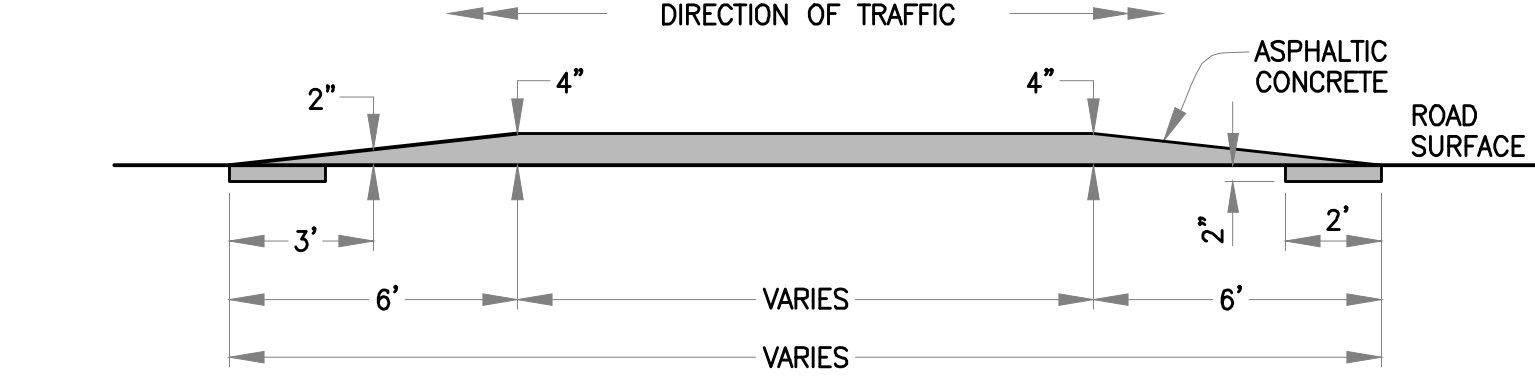
Existing Street Width (Back of Curb to Back of Curb)	A
38' & wider	5'-3"
between 32' & 38'	3'-9"
32' & narrower	3'-2"



PLACED APPROX. 30'  
BEFORE TABLE OR AS  
DIRECTED BY INSPECTOR.

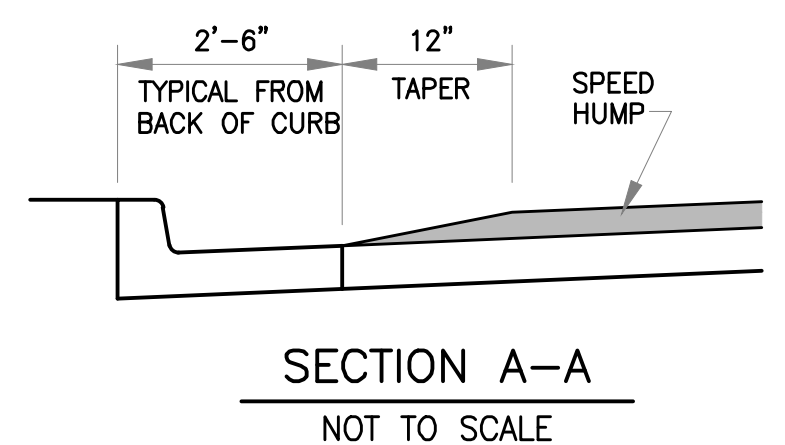


**PLAN**  
NOT TO SCALE



**PROFILE**  
NOT TO SCALE

**SPEED TABLE - T-INTERSECTION**

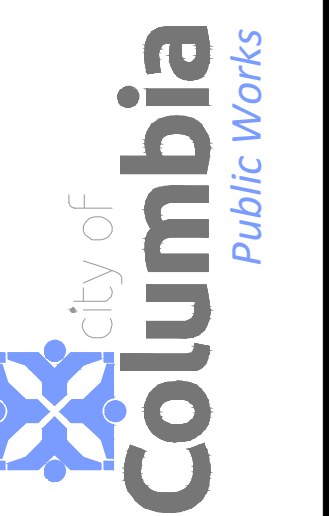


**SECTION A-A**  
NOT TO SCALE

No.	Date	By	Revision

**HULEN DRIVE TRAFFIC CALMING**  
Speed Tables

**Mission**  
Provide safe, sustainable  
infrastructure that promotes  
positive communities.



Shane Steven Creech  
Registered Professional  
Engineer  
PE-2007011061

File No.	
Scale:	1"=20'
Date:	10/26/2023
Des.	A.S.B.
Dwn.	S.A.W.
Chk.	J.D.R.