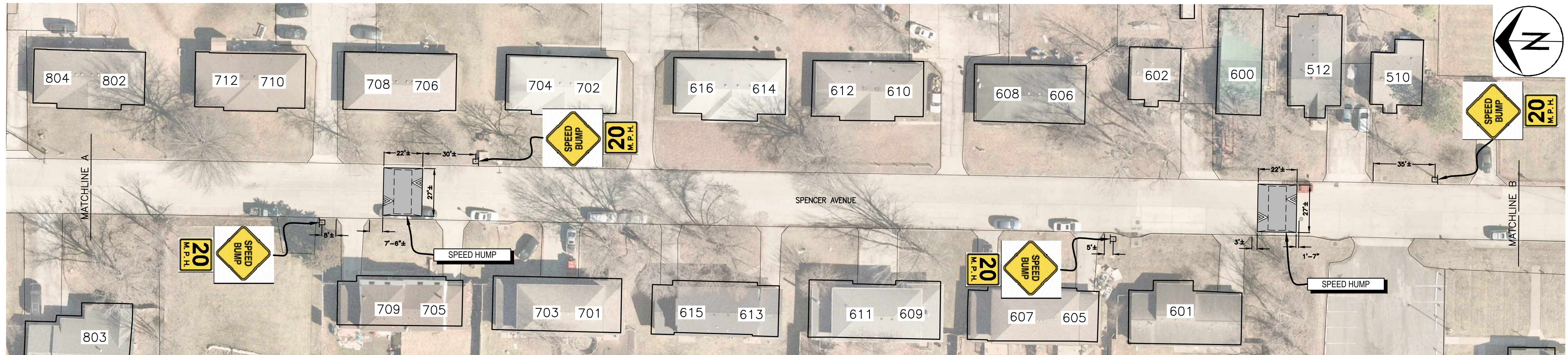


o:\caddres\traffic\calming\spencer\_ave\_traffic\_calming.dwg

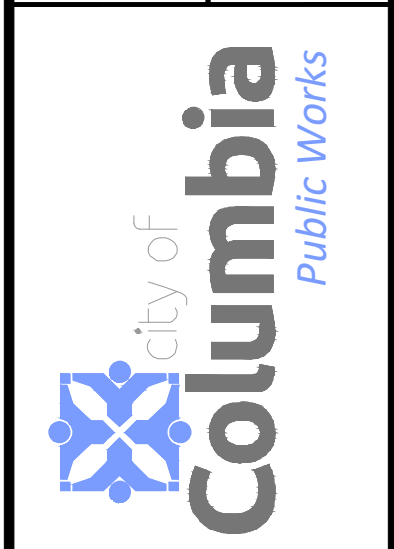


No.	Date	By	Revision

# SPENCER AVENUE TRAFFIC CALMING PLAN

**Mission**  
Provide safe, sustainable infrastructure that promotes positive communities.

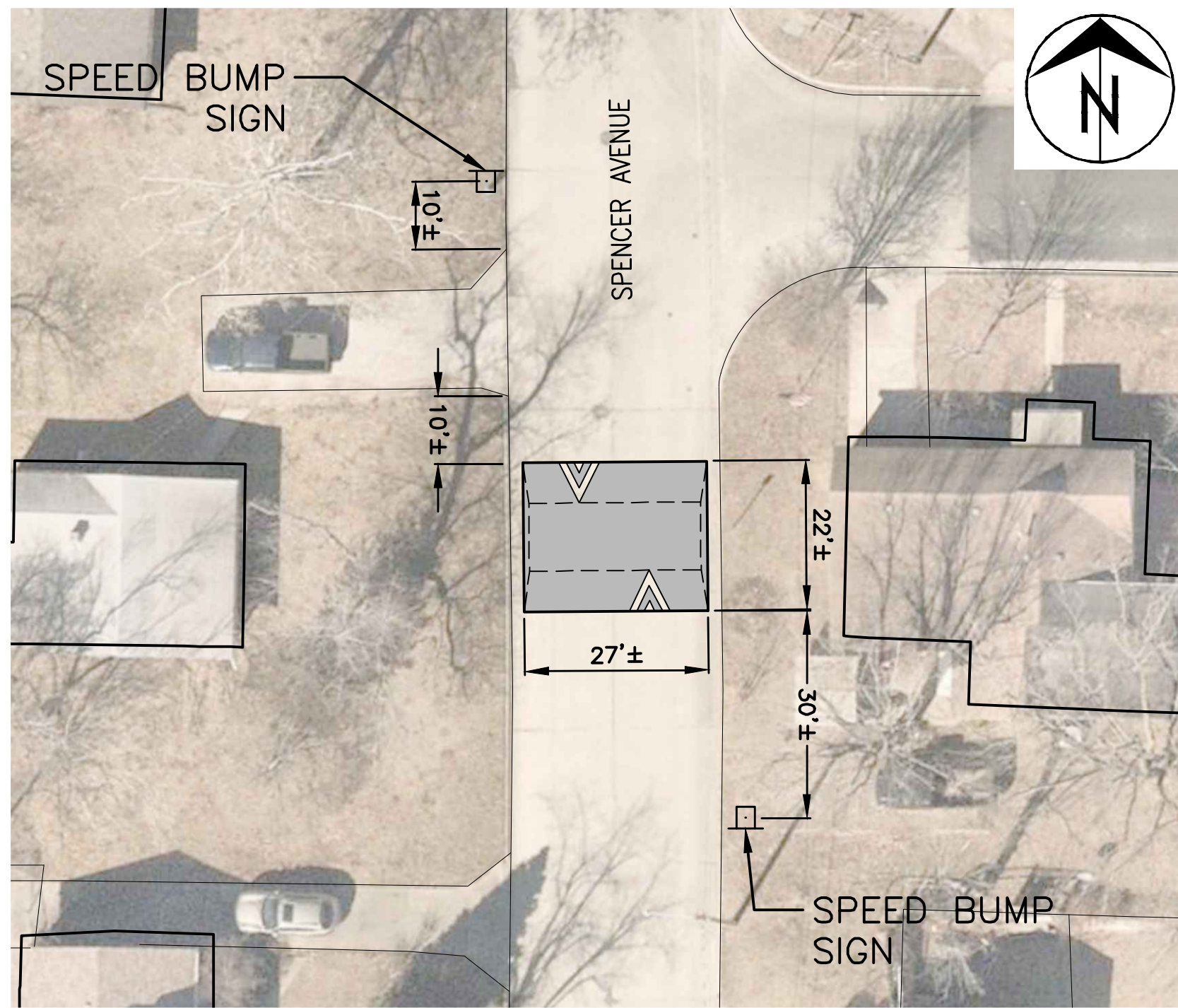
701 East Broadway  
P.O. Box 6015  
Columbia, MO 65205  
(573) 875-2489



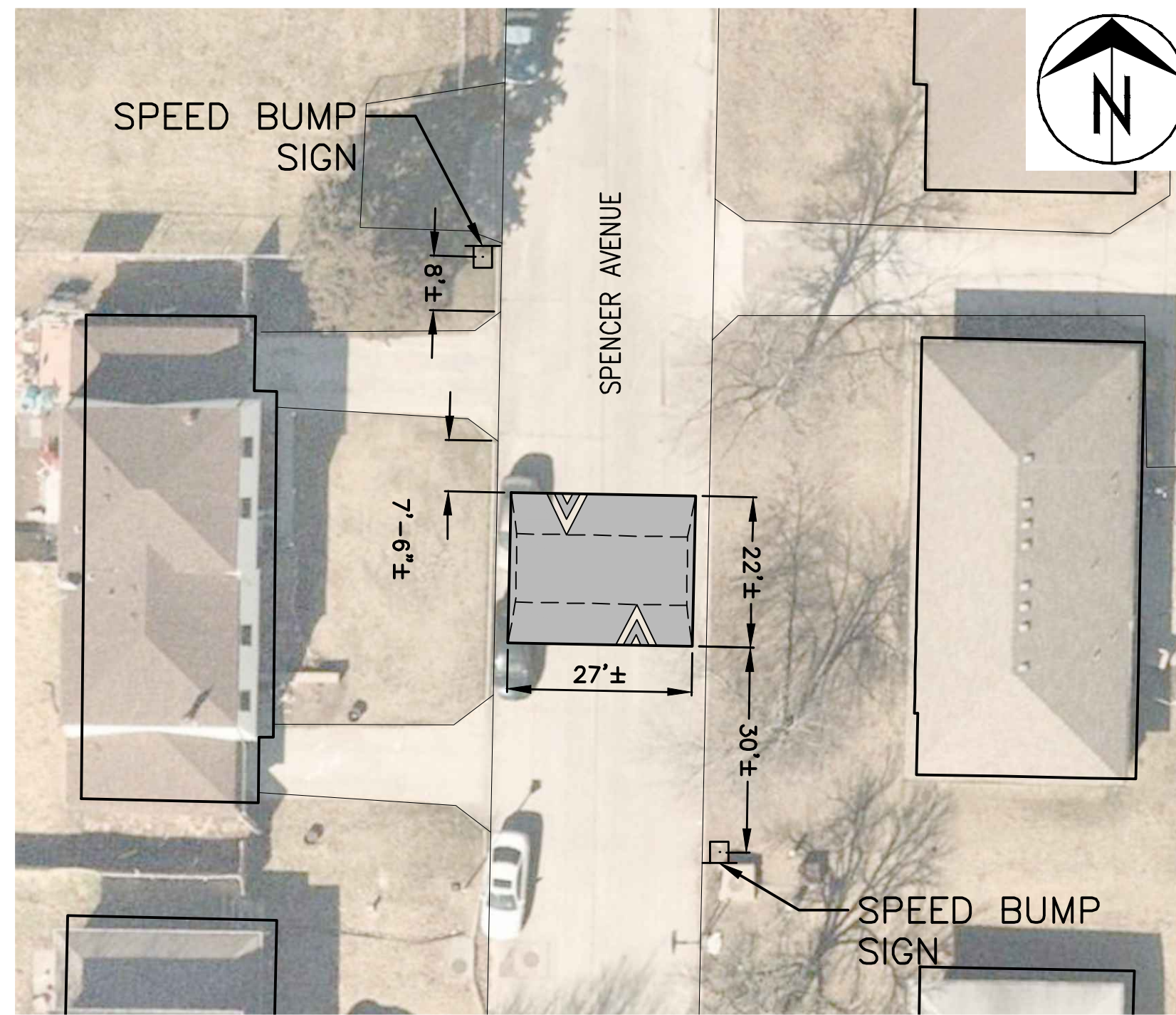
Shane Steven Crech  
Registered Professional Engineer  
PE-2007011061

File No.	
Scale:	1"=30'
Date:	1/9/2024
Des.	A.S.B.
Dwn.	S.A.W.
Chk.	J.D.R.

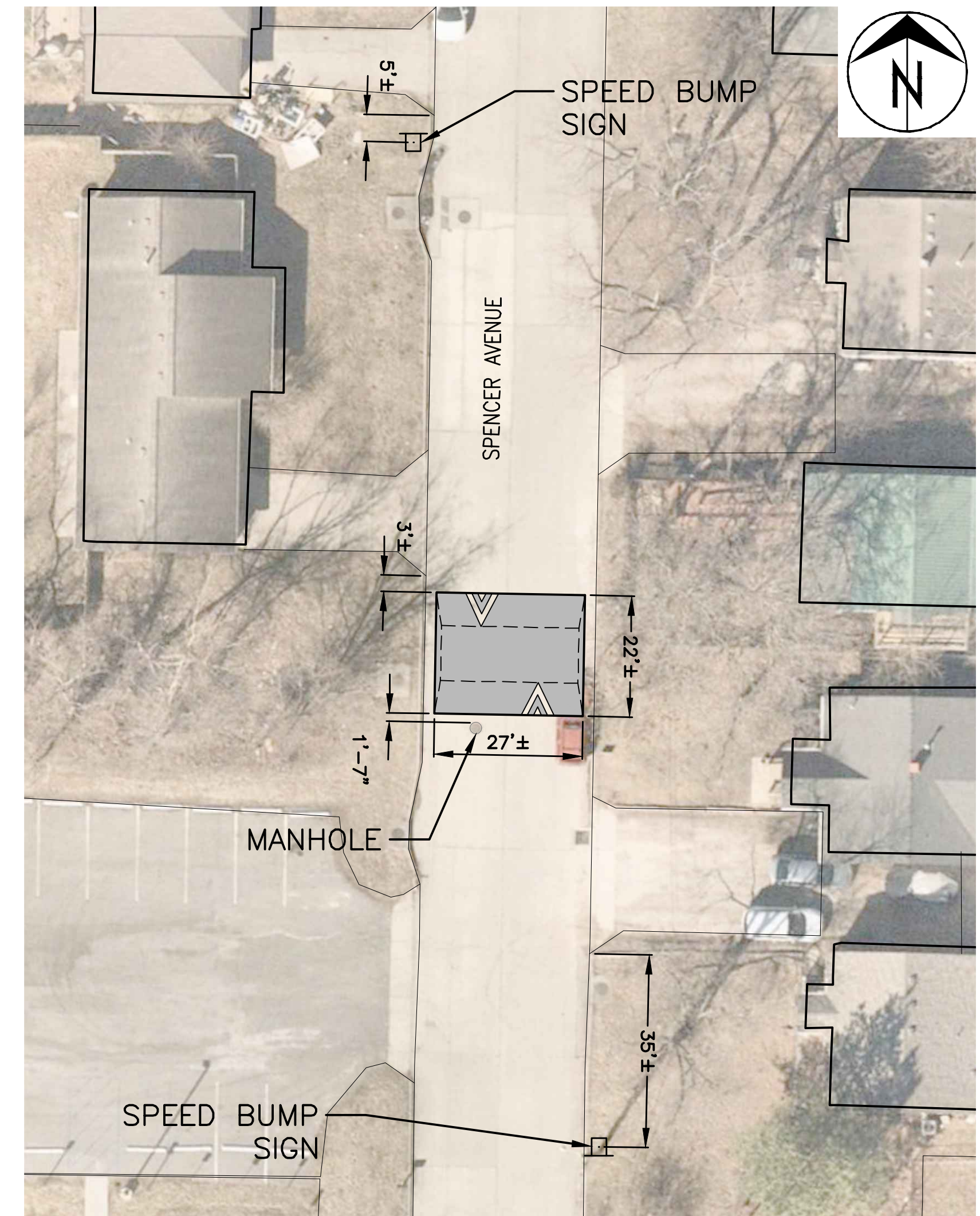




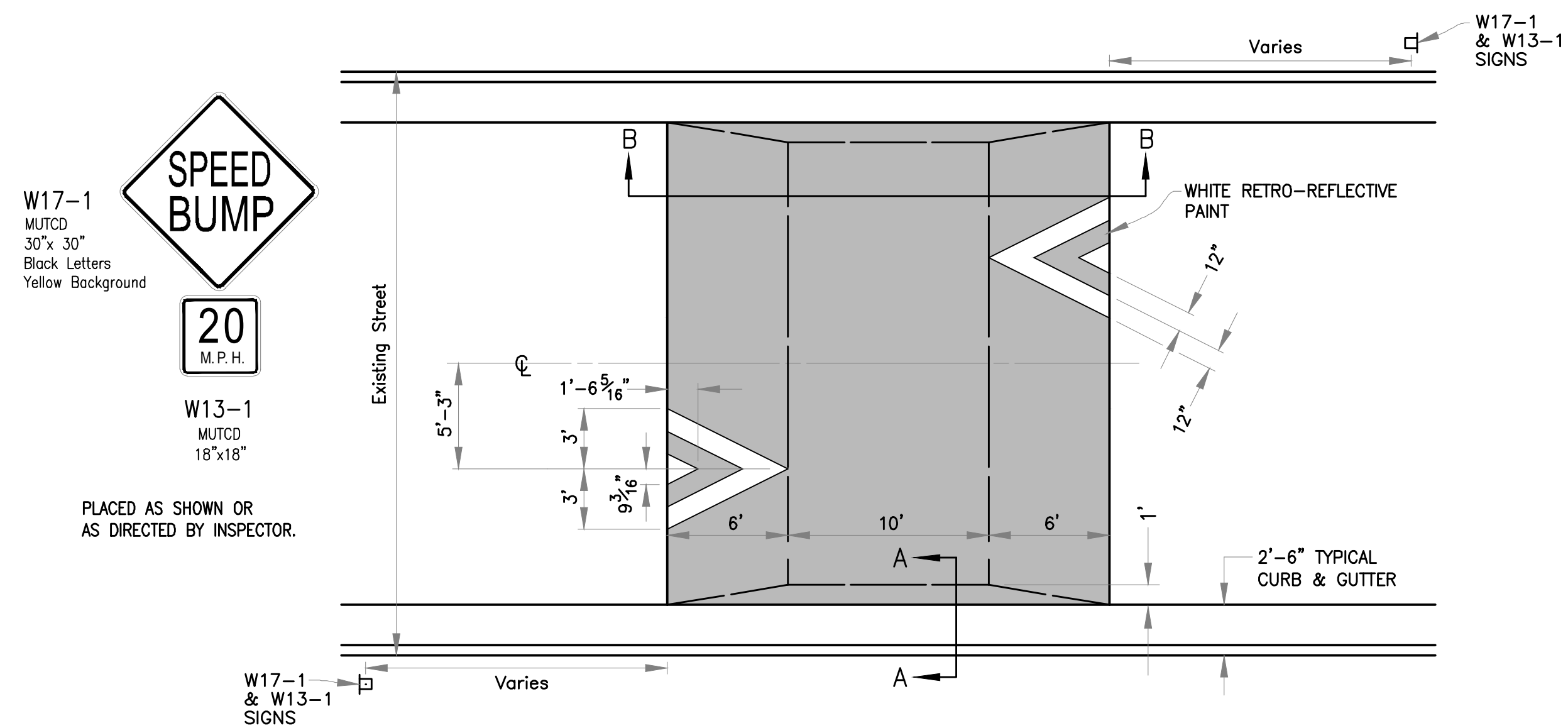
**811 SPENCER AVENUE**  
1" = 20'



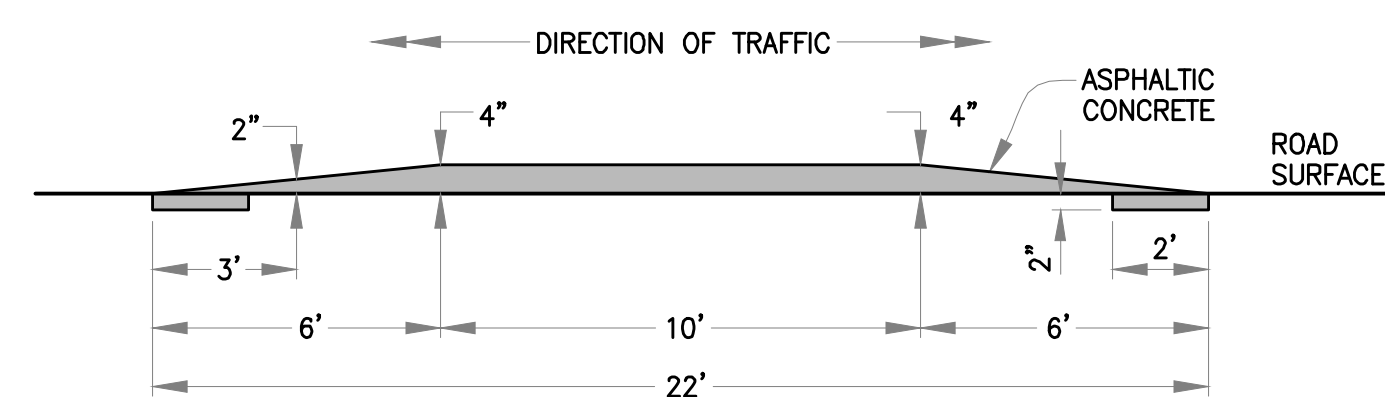
**708 SPENCER AVENUE**  
1" = 20'



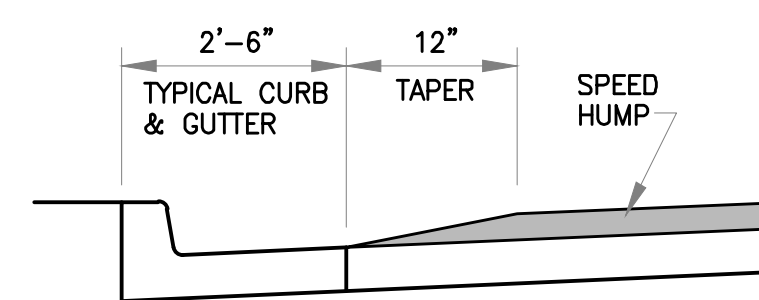
**512 SPENCER AVENUE**  
1" = 20'



**PLAN**  
NOT TO SCALE



**SECTION B-B**  
NOT TO SCALE



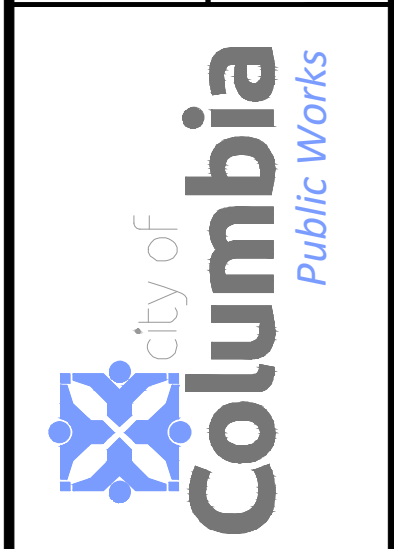
**SECTION A-A**  
NOT TO SCALE

**SPEED HUMP**  
NOT TO SCALE

Revision	By	Date	No.

**SPENCER AVENUE TRAFFIC CALMING**  
Speed Humps

**Mission**  
Provide safe, sustainable infrastructure that promotes positive communities.  
701 East Broadway  
P.O. Box 6015  
Columbia, MO 65205  
(573) 875-2489



Shane Steven Crech  
Registered Professional Engineer  
PE-2007011061  
File No.  
Scale: As Shown  
Date: 1/9/2024  
Des. A.S.B  
Dwn. S.A.W  
Chk. J.D.R.

o:\external\traffic\calming\spencer\_ave\_traffic\_calming.dwg  
2015 Orthophoto Source: Boone County Assessor