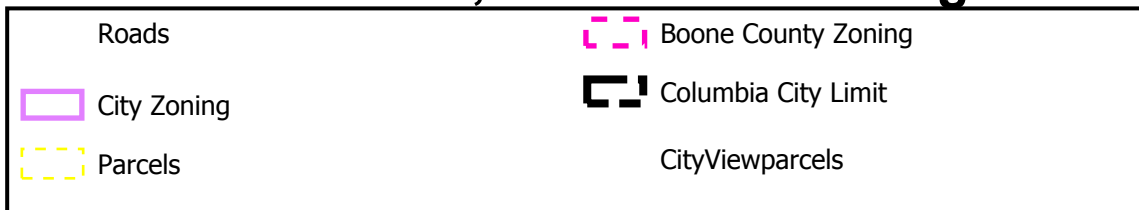


# #17-76: The Brooks at Columbia, LLC Annexation Annexation, Permanent Zoning

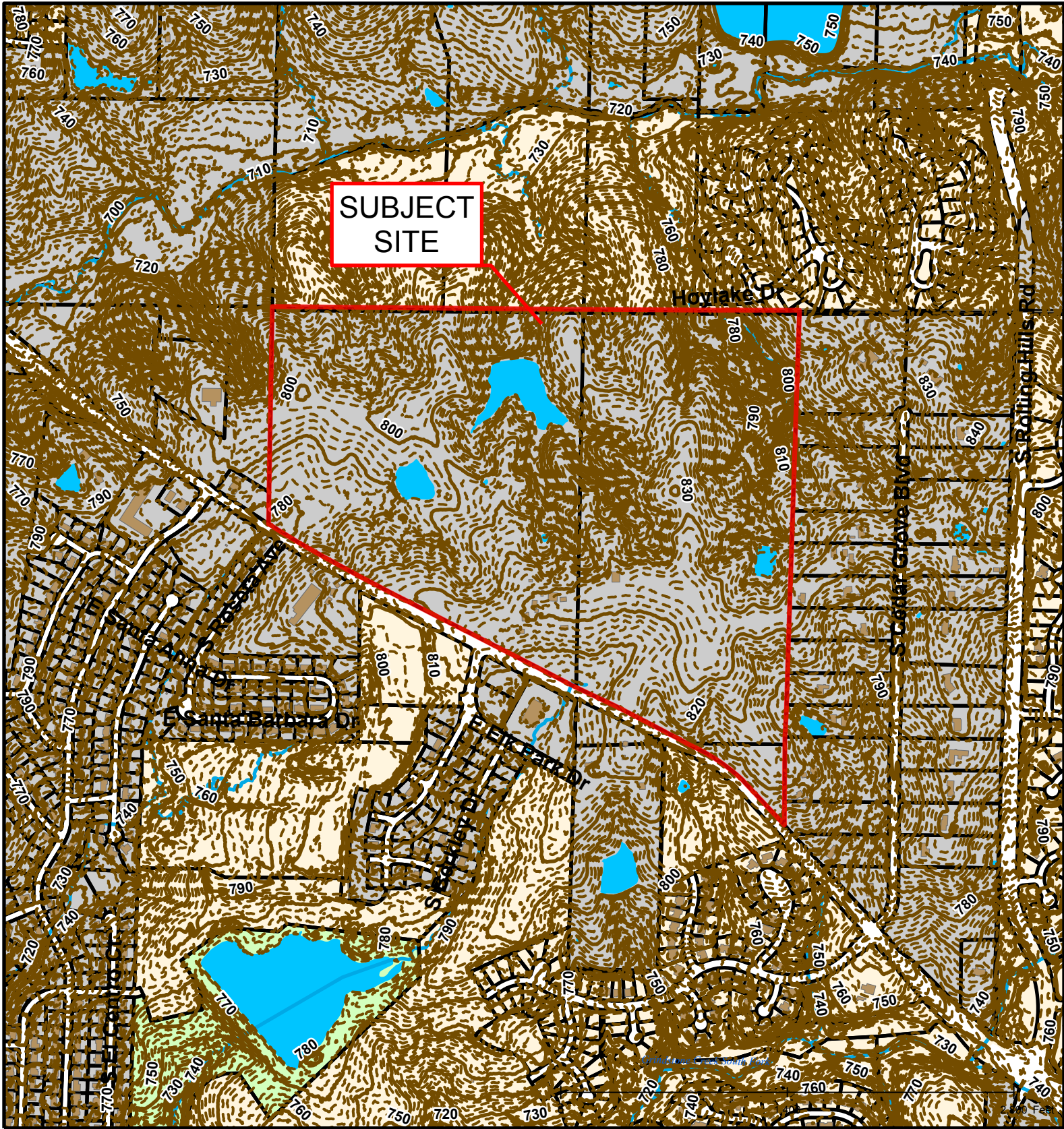


Created by The City of Columbia - Community Development Department

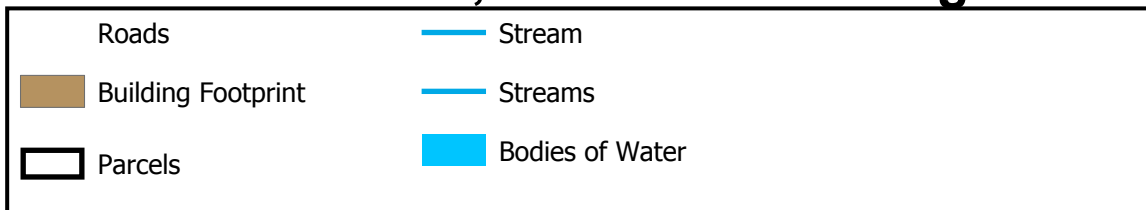
Parcel Data Source: Boone County Assessor

2015 Imagery: Boone County Assessor's Office

Hillshade Data: Boone County GIS Office



## #17-76: The Brooks at Columbia, LLC Annexation Annexation, Permanent Zoning

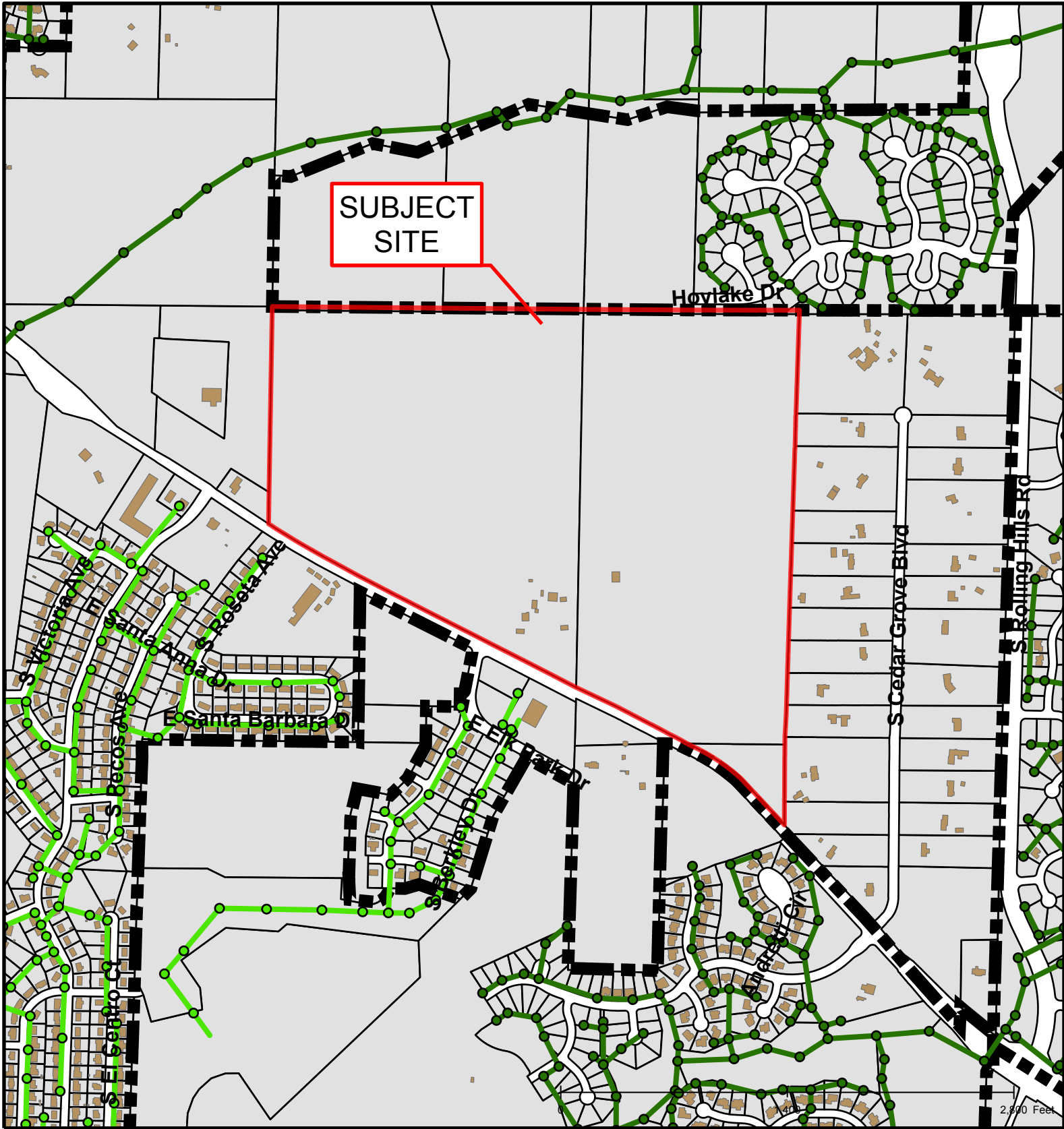


Created by The City of Columbia - Community Development Department

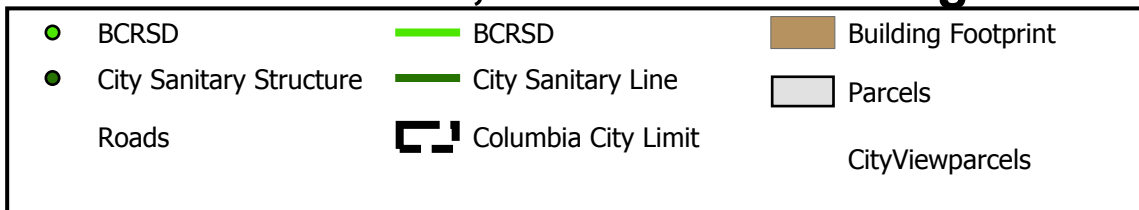
Parcel Data Source: Boone County Assessor

2015 Imagery: Boone County Assessor's Office

Hillshade Data: Boone County GIS Office



# #17-76: The Brooks at Columbia, LLC Annexation Annexation, Permanent Zoning



Created by The City of Columbia - Community Development Department

Parcel Data Source: Boone County Assessor

2015 Imagery: Boone County Assessor's Office

Hillshade Data: Boone County GIS Office