

AccuDock
 1790 SW 13th Court
 Pompano Beach, FL 33069
 9547857557
 info@accudock.com



Estimate

ADDRESS Matt Boehner 1507 Business Loop 70 West Columbia, Missouri 65202 (573) 874-7204 Matthew.Boehner@como.gov	SHIP TO Matt Boehner 1507 Business Loop 70 West Columbia, Missouri 65202 (573) 874-7204 Matthew.Boehner@como.gov	ESTIMATE # 2246 DATE 07/29/2019 EXPIRATION DATE 08/29/2019
--	--	---

SHIP VIA LTL	SALES REP AJ	DESCRIPTION ADA Fishing Dock
------------------------	------------------------	--

DATE	ACTIVITY	QTY	RATE	AMOUNT
07/29/2019	GAN-HP5 5' Landside Hinge Plate	1	449.00	449.00T
07/29/2019	Misc 5 x 12 ADA Aluminum Gangway	1	3,300.00	3,300.00T
07/29/2019	GAN-CP5 5' Dock Side Connection/Hinge Plate	1	449.00	449.00T
07/29/2019	GAN-COH Compensation float with mounted hinge assembly	1	999.00	999.00T
07/29/2019	FFLT-0488 4' x 8' x 8" Framed Float	3	849.00	2,547.00T
07/29/2019	CON-S20 S-Style Connector w/ Frame add-on	4	32.00	128.00T
07/29/2019	ACC-RL3 Heavy duty triple aluminum railing - ADA spec.	35	75.00	2,625.00T
07/29/2019	CAB-SET 5/16 5/16' Cable Tie Back Setup	2	194.54	389.08
	CAB-CAB 5/16 5/16" - 7X19 S/S Cable	2	2.09	
	CAB-CLA 5/16 5/16" S/S Wire Rope Clamp	2	4.99	
	CAB-SHA 3/8 3/8" S/S Shackle	4	10.75	
	CAB-SLE 5/16 5/16" Oval Crimp Sleeve	2	7.99	
	CAB-TBK 1/2 1/2" x 6" S/S Turnbuckle	2	49.99	
	CAB-THI 5/16 5/16" Heavy Duty 316 S/S Wire Rope Thimble	4	4.99	

DATE	ACTIVITY	QTY	RATE	AMOUNT
	CAB-CMB Cable tie back mounting bracket	4	49.00	

Thank you for the opportunity to earn your business. Stated pricing is valid for 30 days.

ALL SALES ARE FINAL.

SUBTOTAL	10,886.08
TAX (0%)	0.00
SHIPPING	1,300.00
TOTAL	\$12,186.08

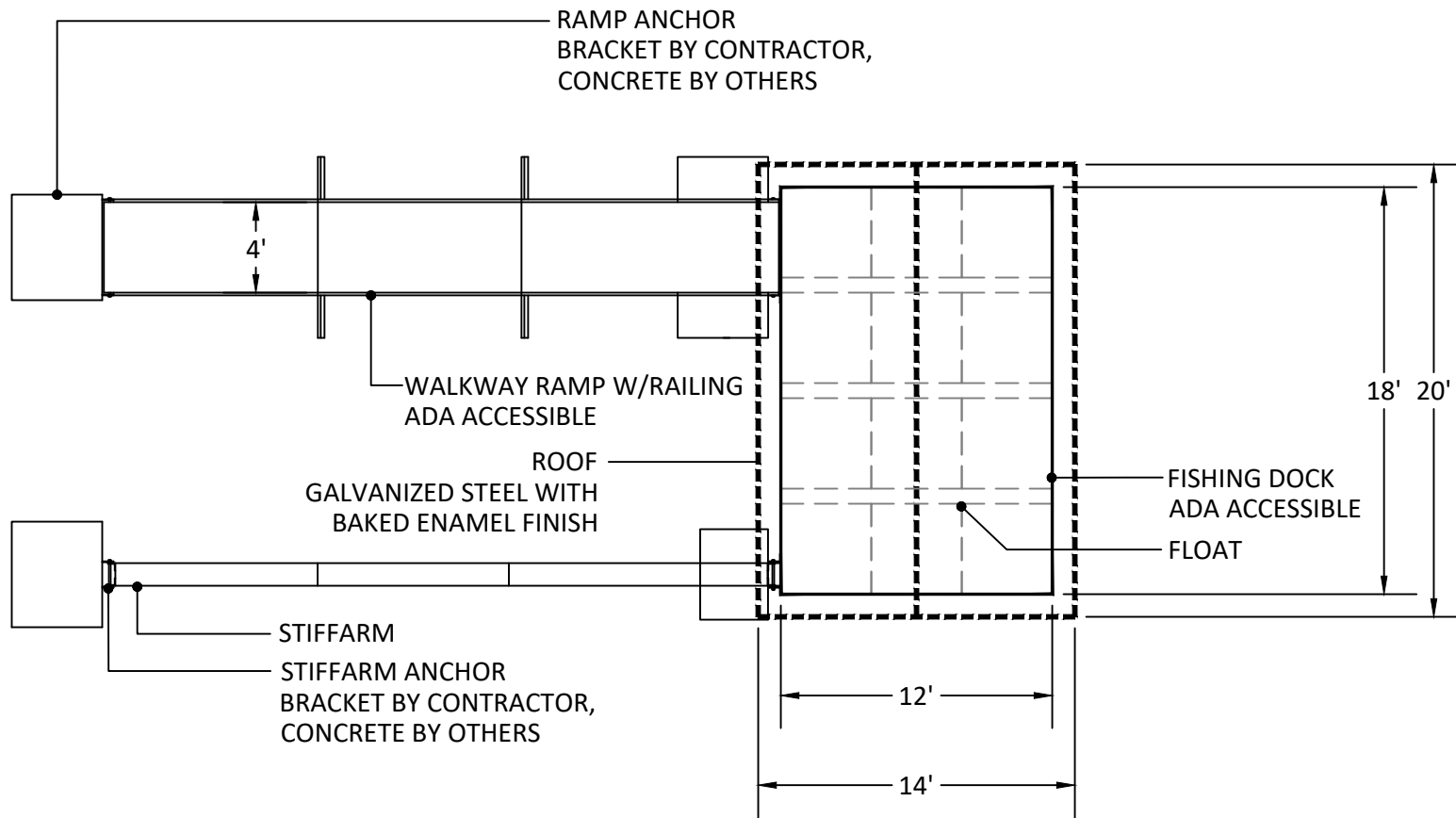
Accepted By

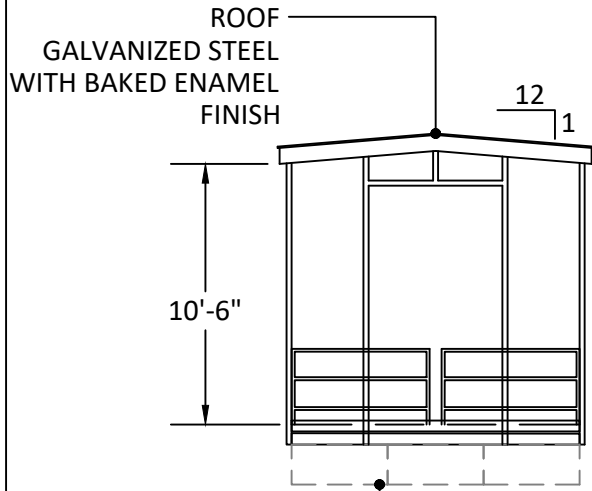
Accepted Date

Vineyards Lake Park Improvements Phase 1

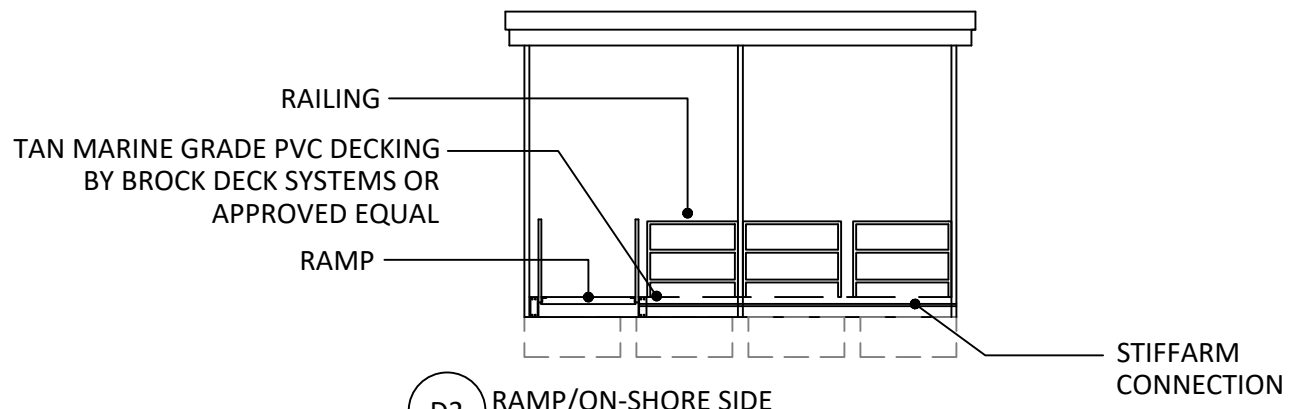
March 30, 2021

Item	Unit	\$/Unit	# of Units	Cost	Performance Procurement
Trail and Walks					
Grading	Per Day	\$1,500.00	15	\$22,500.00	Term & Supply Contract
Parking to Lake Concrete 8' wide (6" thick)	LF	\$45.71	775	\$35,425.25	Bid
ADA Street Sidewalk Concrete to Lake Trail 5' wide (6" thick)	LF	\$28.88	160	\$4,620.80	Bid
Pipe/Levelling Rock/Misc	LS	\$10,000.00	1	\$10,000.00	Term & Supply Contract
Covered Fishing Dock (12'x18')					
Dock and Install	LS	\$30,000.00	1	\$30,000.00	Bid
Site Prep/Misc	LS	\$7,500.00	1	\$7,500.00	Bid
Parking and Entry (10 Standard Spaces 1 ADA)					
Rock	LS	\$7,500.00	1	\$7,500.00	Term & Supply Contract
Concrete Lot and Entry (6" thick)	SF	\$6.36	4500	\$28,620.00	Bid
Roller/Misc	LS	\$3,000.00	1	\$3,000.00	Term & Supply Contract
Grading	Per Day	\$1,500.00	5	\$7,500.00	Term & Supply Contract
Parking Lot Lighting					
Light and Pole	LS	\$1,500.00	1	\$1,500.00	Bid
Service	LS	\$3,000.00	1	\$3,000.00	Parks & Recreation Dept Labor
Stormwater and Site Restoration					
Silt Fence	LS	\$1,000.00	1	\$1,000.00	Term & Supply Contract
Seeding, Topsoil, etc	LS	\$2,000.00	1	\$2,000.00	Parks & Recreation Dept Labor
Total				\$164,166.05	
<i>Performance Procurement Totals</i>					
<i>Bid</i>				\$107,666.05	
<i>Term & Supply Contract</i>				\$51,500.00	
<i>Parks & Recreation Dept Labor</i>				\$5,000.00	

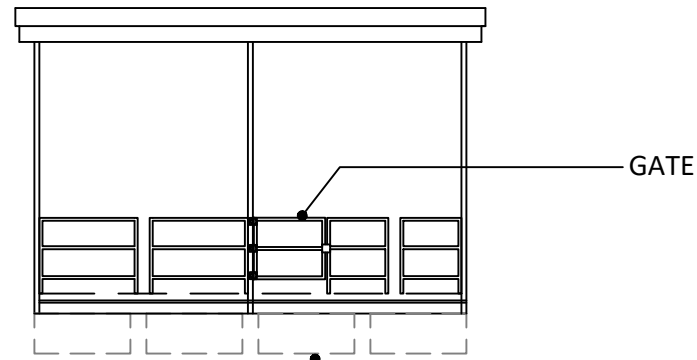




D1 SIDE VIEW



D2 RAMP/ON-SHORE SIDE



D3 GATE/OFF-SHORE SIDE

FLOTATION DEVICES SHALL BE MADE OF PERMANENTLY ENCASED UP OF A FLOTATION MATERIAL. NO NEW OR RECYCLED PLASTIC OR METAL DRUMS.

ALL STEEL PARTS AND ASSEMBLES SHALL BE HOT DIP GALVANIZED. THIS INCLUDES ALL STEEL SHAPES, PLATES, BARS, TUBING, ROOF PANELS, BOLTS, NUTS, WASHERS, ANCHORS AND ALL OTHER STEEL MATERIALS.

DOCK AND RAMP SHALL COMFORM TO ADA REQUIREMENTS.



Project		Catalog #		Type	
Prepared by		Notes		Date	



Lumark

Prevail / Prevail XL Discrete LED

Area / Site Luminaire

Typical Applications

Outdoor • Parking Lots • Walkways • Roadways • Building Areas

Interactive Menu

- Ordering Information [page 2](#)
- Mounting Details [page 3](#)
- Optical Configurations [page 3](#)
- Product Specifications [page 3](#)
- Energy and Performance Data [page 4](#)
- Control Options [page 5](#)

Product Certifications



Product Features

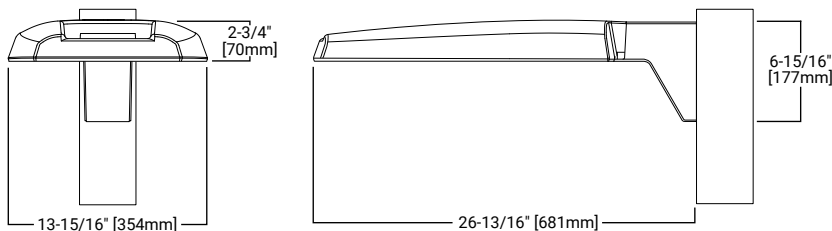


Quick Facts

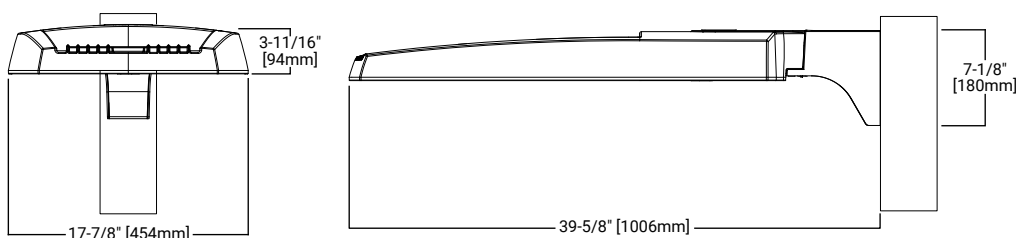
- Direct-mounted discrete light engine for improved optical uniformity and visual comfort
- Lumen packages range from 7,500 - 41,000 nominal lumens (50W - 300W)
- Replaces 70W up to 1,000W HID equivalents
- Efficacies up to 148 lumens per watt
- Standard universal quick mount arm with universal drill pattern

Dimensional Details

Prevail



Prevail XL




Ordering Information

SAMPLE NUMBER: **PRV-XL-PA4B-740-U-T4W-BZ**

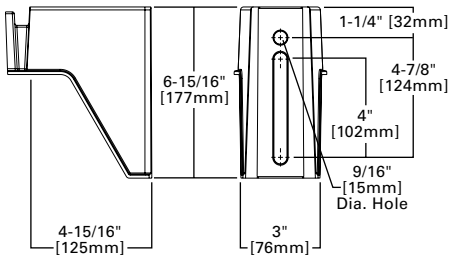
Product Family ^{1,2}	Light Engine		Color Temperature	Voltage	Distribution	Mounting (Included)	Finish
PRV=Prevail	Configuration		740=70CRI, 4000K 730=70CRI, 3000K 750=70CRI, 5000K	U=Universal, 120-277V H=High Voltage, 347-480V 9=347V 8=480V ⁴	T2R=Type II Roadway T2U=Type II Urban T3=Type III T4W=Type IV Wide 5WQ=Type V Square Wide	[Blank]=Standard Versatile Arm MA=Mast Arm WM=Wall Mount Arm	AP=Grey BK=Black BZ=Bronze DP=Dark Platinum GM=Graphite Metallic WH=White
	Drive Current ³						
	PA1=1 Panel, 24 LED Rectangle PA2=2 Panels, 48 LED Rectangles		A=745mA Nominal B=950mA Nominal				
PRV-XL=Prevail XL	PA3=3 Panels, 72 LED Rectangles PA4=4 Panels, 96 LED Rectangles						
Options (Add as Suffix)				Accessories (Order Separately) ¹⁶			
10K =10kV UL 1449 Fused Surge Protective Device HA =50°C High Ambient Temperature HSS =House Side Shield (Factory Installed) ⁵ L90 =Optics Rotated 90° Left R90 =Optics Rotated 90° Right PR =NEMA 3-PIN Twistlock Photocontrol Receptacle ⁶ PR7 =NEMA 7-PIN Twistlock Photocontrol Receptacle ⁶ MS/DIM-L08 =Motion Sensor for Dimming Operation, Up to 8' Mounting Height ^{7,8,9} MS/DIM-L20 =Motion Sensor for Dimming Operation, 9' - 20' Mounting Height ^{7,8,9} MS/DIM-L40 =Motion Sensor for Dimming Operation, 21' - 40' Mounting Height ^{7,8,9} MS-L08 =Motion Sensor for ON/OFF Operation, Up to 8' Mounting Height ^{7,8,9} MS-L20 =Motion Sensor for ON/OFF Operation, 9' - 20' Mounting Height ^{7,8,9} MS-L40 =Motion Sensor for ON/OFF Operation, 21' - 40' Mounting Height ^{7,8,9} ZW =Wavelinx-enabled 4-PIN Twistlock Receptacle ^{7,8,10,11} ZW-SWPD4XX =Wavelinx Wireless Sensor, 7' - 15' Mounting Height ^{7,8,10,11,12} ZW-SWPD5XX =Wavelinx Wireless Sensor, 15' - 40' Mounting Height ^{7,8,10,11,12} LWR-LW =LumaWatt Pro Wireless Sensor, Wide Lens for 8' - 16' Mounting Height ^{7,8,13} LWR-LN =LumaWatt Pro Wireless Sensor, Narrow Lens for 16' - 40' Mounting Height ^{7,8,13} (See Table Below) =LumenSafe Integrated Network Security Camera ^{14,15}				PRVWM-XX =Wall Mount Kit ¹⁷ PRVMA-XX =Mast Arm Mounting Kit ¹⁷ PRVSA-XX =Standard Arm Mounting Kit ¹⁷ PRVXLMW-XX =Wall Mount Kit (for Prevail XL) ¹⁴ PRVXLMA-XX =Mast Arm Mounting Kit (for Prevail XL) ¹⁴ PRVXLSA-XX =Standard Arm Mounting Kit (for Prevail XL) ¹⁴ MA1010-XX =Single Tenon Adapter for 3-1/2" O.D. Tenon MA1011-XX =2@180° Tenon Adapter for 3-1/2" O.D. Tenon MA1017-XX =Single Tenon Adapter for 2-3/8" O.D. Tenon MA1018-XX =2@180° Tenon Adapter for 2-3/8" O.D. Tenon HSS-VP =House Side Shield, Vertical Panel ^{5,18} HSS-HP =House Side Shield, Horizontal Panel ^{5,18} OA/RA1013 =Photocontrol Shorting Cap OA/RA1014 =NEMA Photocontrol - 120V OA/RA1016 =NEMA Photocontrol - Multi-Tap 105-285V OA/RA1201 =NEMA Photocontrol - 347V OA/RA1027 =NEMA Photocontrol - 480V FSIR-100 =Wireless Configuration Tool for Motion Sensor ¹⁹ SWPD4-XX =WaveLinx Wireless Sensor, 7' - 15' Mounting Height ^{11,12,20} SWPD5-XX =WaveLinx Wireless Sensor, 15' - 40' Mounting Height ^{11,12,20} WOLC-7P-10A =WaveLinx Outdoor Control Module (7-PIN) ²¹			
NOTES: 1. DesignLights Consortium® Qualified. Refer to www.designlights.org Qualified Products List under Family Models for details. 2. Customer is responsible for engineering analysis to confirm pole and fixture compatibility for applications. Refer to installation instructions and pole white paper WP513001EN for additional support information. 3. Nominal drive currents shown here. For actual drive current by configuration, refer to Power and Lumen tables. 4. Only for use with 480V Wye systems. Per NEC, not for use with ungrounded systems, impedance grounded systems or corner grounded systems (commonly known as Three Phase Three Wire Delta, Three Phase High Leg Delta and Three Phase Corner Grounded Delta systems). 5. House Side Shield not for use with 5WQ distribution. 6. If High Voltage (H) is specified, use a photocontrol that matches the input voltage used (either 347V or 480V). 7. Option not available with High Voltage (H). Must specify Universal (U), 347V (9), or 480V (8) voltage. 8. Controls system is not available with photocontrol receptacle (PR or PR7) or other controls systems (MS, ZW or LWR). 9. Utilizes the Wattstopper sensor FSP-211. 10. Sensor passive infrared (PIR) may be overly sensitive when operating below -20°C (-4°F). 11. In order for the device to be field-configurable, requires WAC Gateway components WAC-PoE and WPOE-120 in appropriate quantities. Only compatible with WaveLinx system and software and requires system components to be installed for operation. See website for more Wavelinx application information. 12. Replace XX with sensor color (WH, BZ or BK). 13. LumaWatt Pro wireless sensors are factory installed and require network components LWP-EM-1, LWP-GW-1, and LWP-PoE8 in appropriate quantities. See website for LumaWatt Pro application information. 14. Only available in PRV-XL configurations PA3X or PA4X. 15. Not available with High Voltage (H, 8 or 9) or HA options. Consult LumenSafe system product pages for additional details and compatability information. 16. Replace XX with paint color. 17. Only available in PRV configurations PA1X or PA2X. 18. Must order one per optic/LED when ordering as a field-installable accessory (1, 2, 3 or 4). Refer to House Side Shield reference table for details. 19. This tool enables adjustment to Motion Sensor (MS) parameters including high and low modes, sensitivity, time delay, cutoff and more. Consult your lighting representative for more information. 20. Requires Wavelinx-enabled 4-PIN twistlock receptacle (ZW) option. 21. Requires 7-PIN NEMA twistlock photocontrol receptacle (PR7) option. The WOLC-7 cannot be used in conjunction with other controls systems (MS, ZW or LWR). Only for use at 120-347V.							

LumenSafe Integrated Network Security Camera Technology Options (Add as Suffix)

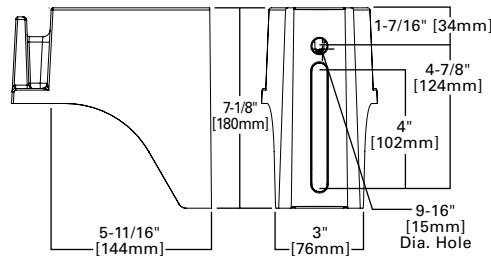
Product Family	Camera Type	Data Backhaul
L =LumenSafe Technology 	D =Dome Camera	C =Cellular, Customer Installed SIM Card A =Cellular, Factory Installed AT&T SIM Card V =Cellular, Factory Installed Verizon SIM Card S =Cellular, Factory Installed Sprint SIM Card E =Ethernet Networking

Mounting Details

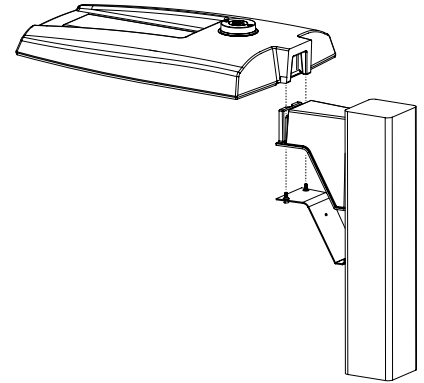
Pole Mount Arm (PRV)



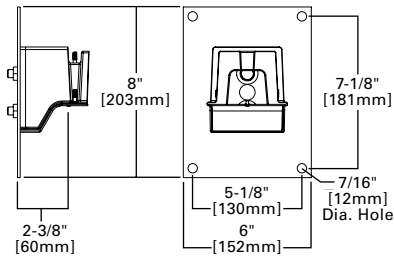
Pole Mount Arm (PRV-XL)



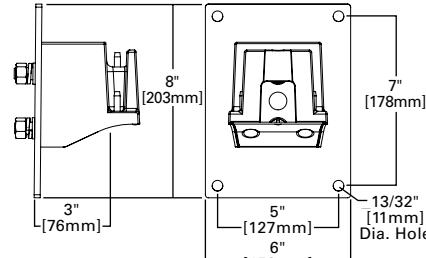
Versatile Mount System



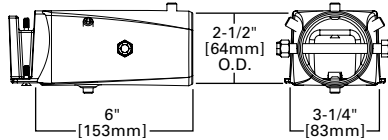
Wall Mount (PRV)



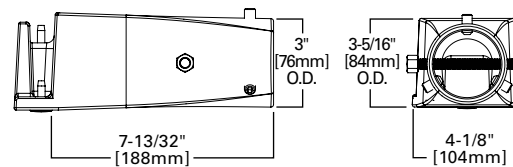
Wall Mount (PRV-XL)



Mast Arm Mount (PRV)



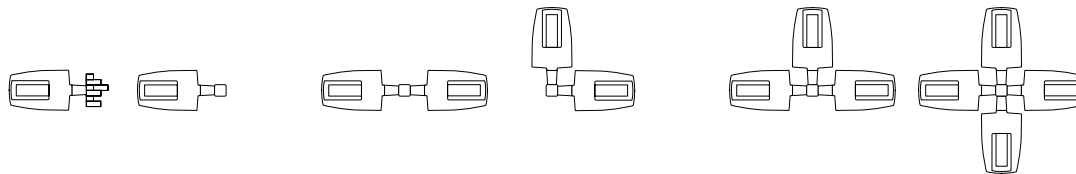
Mast Arm Mount (PRV-XL)



Mounting Configurations and EPAs

NOTE: For 2 PRV's mounted at 90°, requires minimum 3" square or 4" round pole for fixture clearance. For 2 PRV-XL's mounted at 90°, requires minimum 4" square or round pole for fixture clearance. Customer is responsible for engineering analysis to confirm pole and fixture compatibility for applications.

Wall Mount	Arm Mount Single	Arm Mount 2 @ 180°	Arm Mount 2 @ 90°	Arm Mount 3 @ 90°	Arm Mount 4 @ 90°
	EPA 0.92 (PRV) EPA 1.12 (PRV-XL)	EPA 1.35 (PRV) EPA 2.25 (PRV-XL)	EPA 1.42 (PRV) EPA 2.13 (PRV-XL)	EPA 1.63 (PRV) EPA 2.52 (PRV-XL)	EPA 1.63 (PRV) EPA 2.52 (PRV-XL)



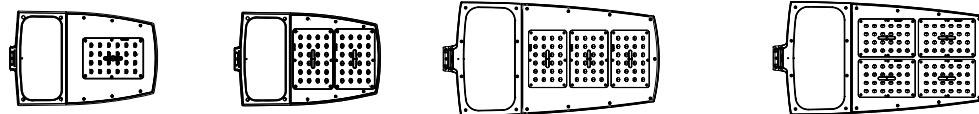
Optical Configurations

PRV-PA1X

PRV-PA2X

PRV-XL-PA3X

PRV-XL-PA4X



Product Specifications

Construction

- Single-piece die-cast aluminum housing
- Tethered die-cast aluminum door

Optics

- Dark Sky Approved (3000K CCT and warmer only)
- Precision molded polycarbonate optics

Electrical

- -40°C minimum operating temperature
- 40°C maximum operating temperature
- >.9 power factor

- <20% total harmonic distortion
- Class 1 electronic drivers have expected life of 100,000 hours with <1% failure rate
- 0-10V dimming driver is standard with leads external to the fixture

Mounting

- Versatile, patented, standard mount arm accommodates multiple drill patterns ranging from 1-1/2" to 4-7/8" (Type M drilling recommended for new installations)
- A knock-out on the standard mounting arm enables round pole mounting

- Prevail: 3G vibration rated (all arms)
- Prevail XL Mast Arm: 3G vibration rated
- Prevail XL Standard Arm: 1.5G vibration rated

Finish

- Five-stage super TGIC polyester powder coat paint, 2.5 mil nominal thickness

Shipping Data

- Prevail: 20 lbs. (9.09 kgs.)
- Prevail XL: 45 lbs. (20.41 kgs.)

Energy and Performance Data

Power and Lumens (PRV)

[View PRV Discrete IES files](#)

Light Engine		PA1A	PA1B	PA2A	PA2B
Power (Watts)		54	74	113	151
Drive Current (mA)		670	930	720	970
Input Current @ 120V (A)		0.45	0.62	0.93	1.26
Input Current @ 277V (A)		0.21	0.28	0.41	0.55
Input Current @ 347V (A)		0.17	0.23	0.33	0.45
Input Current @ 480V (A)		0.12	0.17	0.24	0.33
Distribution					
Type II Roadway	4000K/5000K Lumens	7,605	9,896	15,811	19,745
	BUG Rating	B1-U0-G2	B1-U0-G2	B2-U0-G3	B2-U0-G3
	Lumens per Watt	141	134	141	131
	3000K Lumens ¹	6,926	9,012	14,399	17,982
Type II Urban	4000K/5000K Lumens	7,597	9,886	15,795	19,724
	BUG Rating	B2-U0-G2	B3-U0-G3	B3-U0-G3	B3-U0-G3
	Lumens per Watt	141	134	141	131
	3000K Lumens ¹	6,919	9,003	14,384	17,963
Type III	4000K/5000K Lumens	7,575	9,857	15,749	19,667
	BUG Rating	B1-U0-G2	B2-U0-G3	B3-U0-G3	B3-U0-G3
	Lumens per Watt	140	133	141	130
	3000K Lumens ¹	6,899	8,977	14,343	17,911
Type IV Wide	4000K/5000K Lumens	7,484	9,738	15,560	19,431
	BUG Rating	B2-U0-G2	B2-U0-G3	B3-U0-G3	B3-U0-G4
	Lumens per Watt	139	132	139	129
	3000K Lumens ¹	6,816	8,869	14,170	17,696
Type V Square Wide	4000K/5000K Lumens	7,831	10,190	16,281	20,332
	BUG Rating	B3-U0-G2	B4-U0-G3	B4-U0-G3	B5-U0-G3
	Lumens per Watt	145	138	145	135
	3000K Lumens ¹	7,132	9,280	14,827	18,517

NOTES:
1. For 3000K BUG Ratings, refer to published IES files.

Power and Lumens (PRV-XL)

[View PRV-XL Discrete IES files](#)

Light Engine		PA3A	PA3B	PA4A	PA4B
Power (Watts)		172	234	245	303
Drive Current (mA)		750	980	785	970
Input Current @ 120V (A)		1.44	1.95	2.04	2.53
Input Current @ 277V (A)		0.62	0.85	0.93	1.12
Input Current @ 347V (A)		0.52	0.70	0.74	0.90
Input Current @ 480V (A)		0.39	0.52	0.53	0.65
Distribution					
Type II Roadway	4000K/5000K Lumens	24,718	30,648	34,067	39,689
	BUG Rating	B3-U0-G3	B3-U0-G4	B3-U0-G4	B3-U0-G4
	Lumens per Watt	144	131	139	131
	3000K Lumens ¹	22,511	27,912	31,025	36,145
Type II Urban	4000K/5000K Lumens	24,692	30,616	34,031	39,647
	BUG Rating	B4-U0-G4	B4-U0-G4	B4-U0-G4	B4-U0-G4
	Lumens per Watt	144	131	139	131
	3000K Lumens ¹	22,488	27,882	30,992	36,107
Type III	4000K/5000K Lumens	24,621	30,527	33,932	39,532
	BUG Rating	B3-U0-G4	B3-U0-G5	B3-U0-G5	B4-U0-G5
	Lumens per Watt	143	130	138	130
	3000K Lumens ¹	22,423	27,802	30,903	36,002
Type IV Wide	4000K/5000K Lumens	24,325	30,161	33,525	39,057
	BUG Rating	B3-U0-G4	B3-U0-G5	B3-U0-G5	B4-U0-G5
	Lumens per Watt	141	129	137	129
	3000K Lumens ¹	22,153	27,468	30,531	35,570
Type V Square Wide	4000K/5000K Lumens	25,453	31,559	35,079	40,868
	BUG Rating	B5-U0-G4	B5-U0-G5	B5-U0-G5	B5-U0-G5
	Lumens per Watt	148	135	143	135
	3000K Lumens ¹	23,180	28,741	31,947	37,219

NOTES:
1. For 3000K BUG Ratings, refer to published IES files.

Lumen Maintenance

Ambient Temperature	TM-21 Lumen Maintenance (78,000 Hours)
Up to 50°C	96.76%

House Side Shield Reference Table

		Light Engine Configuration			
		PA1	PA2	PA3	PA4
Rotated Optics	Standard	HSS-VP (qty 1)	HSS-HP (qty 2)	HSS-HP (qty 3)	HSS-VP (qty 4)
	L90 or R90 option	HSS-HP (qty 1)	HSS-VP (qty 2)	HSS-VP (qty 3)	HSS-HP (qty 4)

Control Options

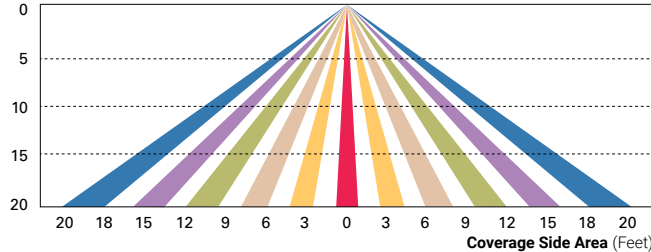
0-10V This fixture provides 0-10V dimming wire leads for use with a lighting control panel or other control method.

Photocontrol (PR and PR7) Photocontrol receptacles provide a flexible solution to enable "dusk-to-dawn" lighting by sensing light levels. Advanced control systems compatible with NEMA 7-pin standards can be utilized with the PR7 receptacle.

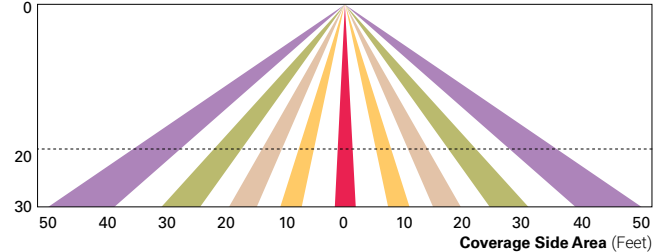
Dimming Occupancy Sensor (MS) These sensors are factory installed in the luminaire housing. When a sensor for dimming operation (MS/DIM) option is selected, the luminaire will dim down to approximately 50 percent power after five minutes of no activity detected. When activity is detected, the luminaire returns to full light output. When a sensor for ON/OFF operation (MS-LXX) is selected, the luminaire will turn off after five minutes of no activity.

These occupancy sensors include an integral photocell that can be activated or inactivated with the programming remote / configuration tool for "dusk-to-dawn" control or "daylight harvesting". **Note:** For MS sensors, the factory preset is OFF (Disabled). The programming remote / tool is a wireless tool that can be utilized to change the dimming level, time delay, sensitivity and other parameters. A variety of sensor lenses are available to optimize the coverage pattern for mounting heights from 8'-40'.

For mounting heights from 9' to 20' (-L20)



For mounting heights from 21' to 40' (-L40)

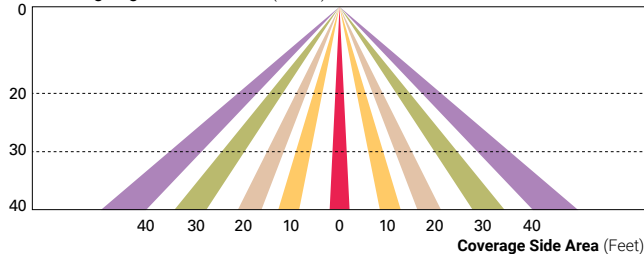


WaveLinx Wireless Control and Monitoring System Available in 7-PIN or 4-PIN configurations, the WaveLinx Outdoor control platform operates on a wireless mesh network based on IEEE 802.15.4 standards enabling wireless control of outdoor lighting. Use the WaveLinx Mobile application for set-up and configuration. At least one Wireless Area Controller (WAC) is required for full functionality and remote communication (including adjustment of any factory pre-sets).

WaveLinx Outdoor Control Module (WOLC-7P-10A) A photocontrol that enables astronomical or time-based schedules to provide ON, OFF and dimming control of fixtures utilizing a 7-PIN receptacle. The out-of-box functionality is ON at dusk and OFF at dawn.

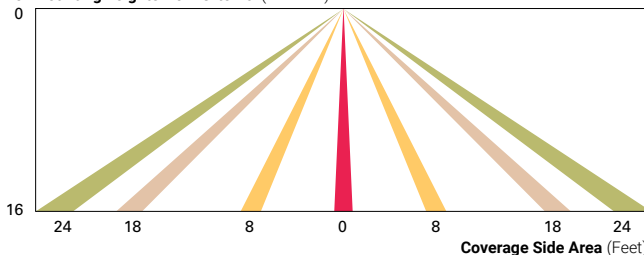
WaveLinx Wireless Sensor (SWPD4 and SWPD5) These outdoor sensors offer passive infrared (PIR) occupancy and a photocell for closed loop daylight sensing. These sensors can be factory installed or field-installed via simple, tool-less integration into luminaires equipped with the Zhaga Book 18 compliant 4-PIN receptacle (ZW). These sensors are factory preset to dim down to approximately 50 percent power after 15 minutes of no activity detected. These occupancy sensors include an integral photocell for "dusk-to-dawn" control or daylight harvesting that is factory-enabled. A variety of sensor lenses are available to optimize the coverage pattern for mounting heights from 7'-40'.

For mounting heights from 16' to 40' (SWPD)

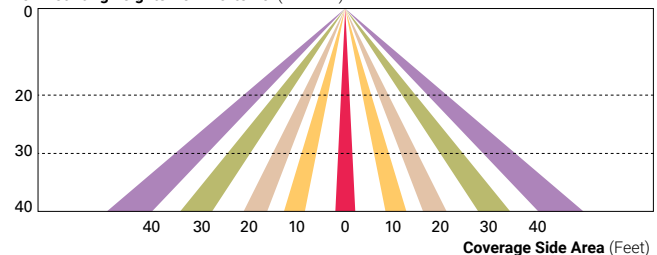


LumaWatt Pro Wireless Control and Monitoring System (LWR-LW and LWR-LN) LumaWatt Pro powered by Enlighted is a connected lighting solution that combines LED luminaires with an integrated wireless sensor system. The sensor controls the lighting system in compliance with the latest energy codes and collects valuable data about building performance and use. Software applications turn the granular data into information through energy dashboards and specialized apps that make it simple and help optimize the use of other resources beyond lighting.

For mounting heights from 8' to 16' (LWR-LW)



For mounting heights from 16' to 40' (LWR-LN)



LumenSafe (LD) The LumenSafe integrated network camera is a streamlined, outdoor-ready camera that provides high definition video surveillance. This IP camera solution is optimally designed to integrate into virtually any video management system or security software platform of choice. No additional wiring is needed beyond providing line power to the luminaire. LumenSafe features factory-installed power and networking gear in a variety of networking options allowing security integrators to design the optimal solution for active surveillance.

Proposed Amenities

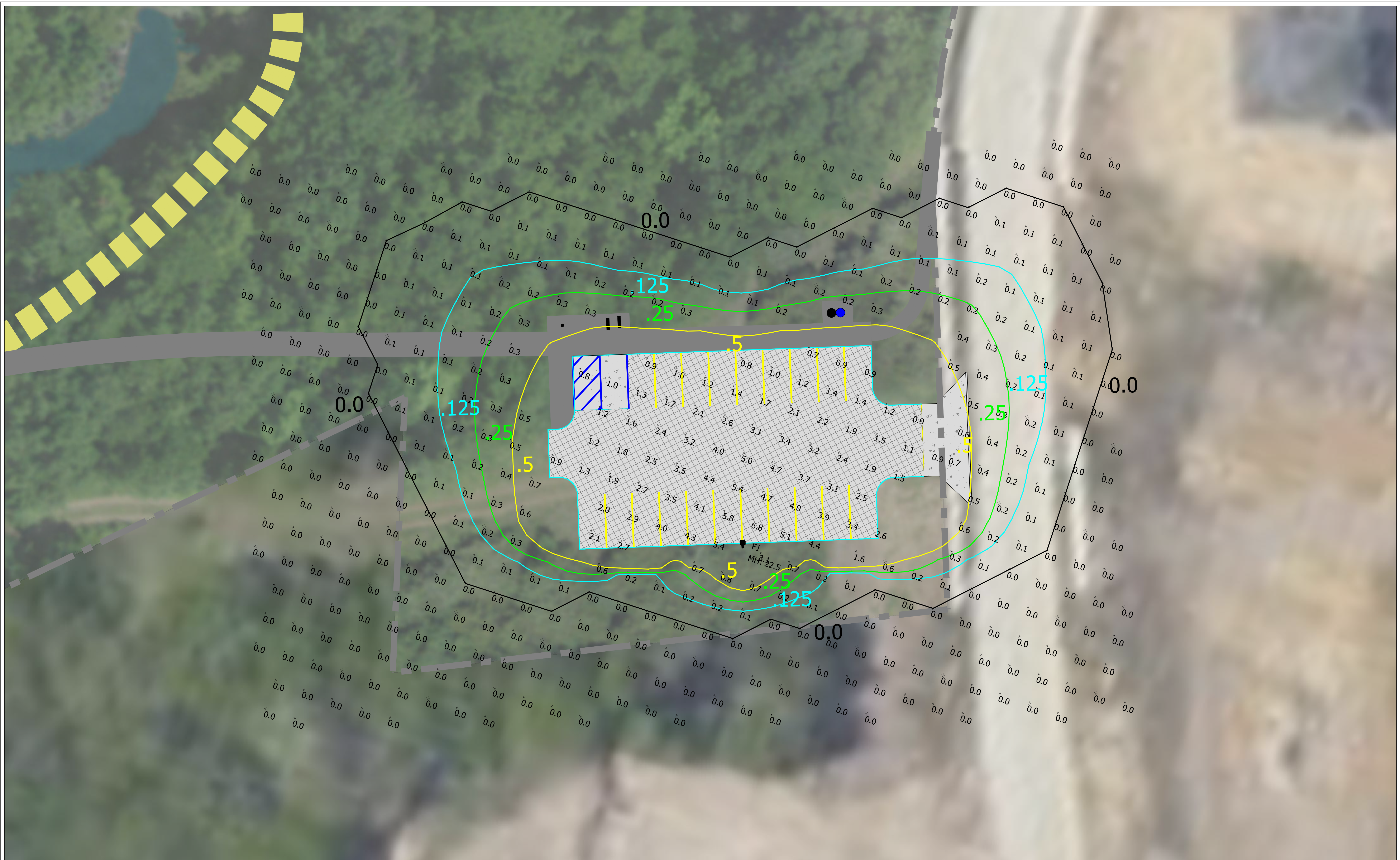
- Covered Fishing Dock (ADA) - 12'x18'
- Concrete Trail (ADA) - 8 Foot Wide Entry to Dock
- Kayak/Canoe Access Ramp to the lake
- Small Playground
- Sidewalk Connection (ADA) From Dumas Drive
- Parking - 10 Standard Spaces, 1 ADA Space
- Parking Lot Lighting



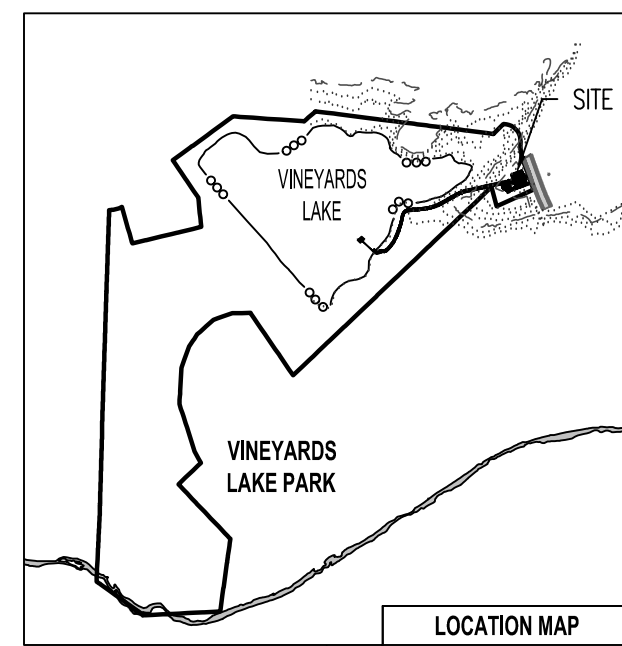
Vineyards Lake Park
 43.85 Acres
 Lake 11.6 Acres



Proposed Vineyards Lake Park Development

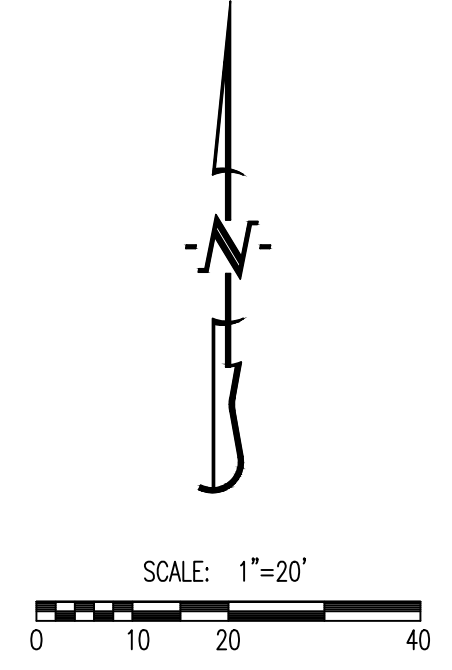
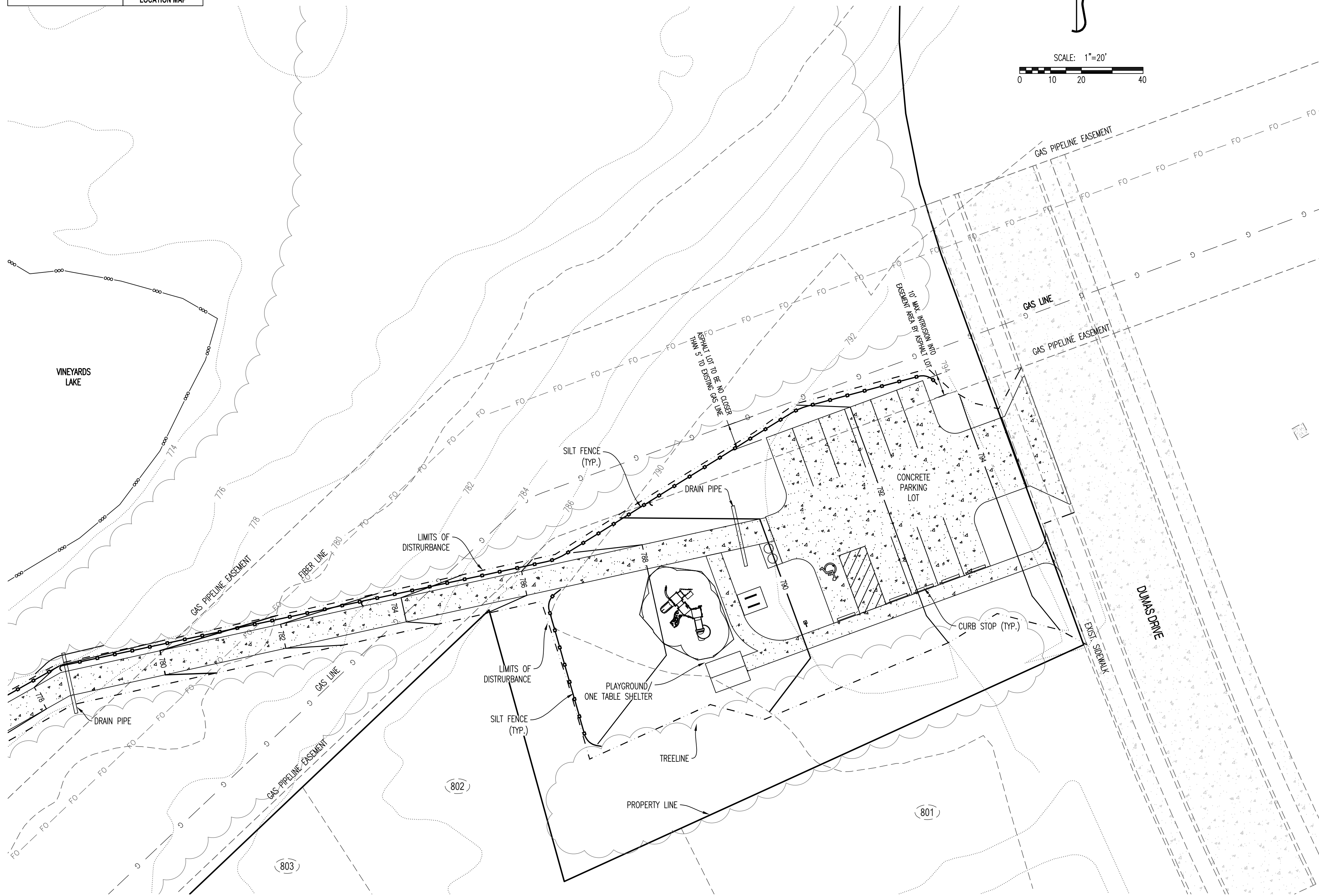


Proposed Vineyards Park Development



FLOOD PLAN STATEMENT:

THIS TRACT IS NOT LOCATED WITHIN A SPECIAL FLOOD HAZARD AREA SUBJECT TO SEC 29-2.3(D)(4)(I) OF THE CODE OF ORDINANCES AND AS SHOWN ON THE FEMA F.I.R.M. PANEL #2901900292E, DATED APRIL 19, 2017.



ALL STREET, STORM DRAIN, AND SANITARY SEWER CONSTRUCTION TO BE IN ACCORDANCE WITH THE CITY OF COLUMBIA "STREET, STORM DRAIN, AND SANITARY SEWER SPECIFICATIONS AND STANDARDS" (CURRENT EDITION).

CONTRACTOR WILL BE RESPONSIBLE FOR PLACEMENT AND MAINTENANCE OF TRAFFIC CONTROL DEVICES NECESSARY TO COMPLETE THEIR PORTION OF WORK. THE DEVICES AND METHODS EMPLOYED WILL COMPLY WITH THE CURRENT VERSION OF THE MANUAL ON UNIFORM TRAFFIC CONTROL DEVICES.

EXISTING UTILITIES SHOWN FOR REFERENCE ONLY. CONTRACTOR SHALL COORDINATE LOCATES (HORIZONTAL AND VERTICAL) PRIOR TO ANY EXCAVATION.

ALL EXCAVATION TO BE IN ACCORDANCE WITH SECTIONS 319.010-319.050, REVISED STATUTES OF THE STATE OF MISSOURI. SUCH COMPLIANCE SHALL NOT, HOWEVER, EXCUSE ANY PERSON MAKING ANY EXCAVATION FROM DOING SO IN A CAREFUL AND PRUDENT MANNER, NOR SHALL IT EXCUSE SUCH PERSON FROM LIABILITY FOR ANY DAMAGE OR INJURY TO UNDERGROUND UTILITIES RESULTING FROM THE EXCAVATION.

ALL LAND DISTURBANCE ACTIVITIES SHALL BE IN ACCORDANCE WITH CHAPTER 12A OF THE CITY OF COLUMBIA CODE OF ORDINANCES.

THERE IS NO REGULATED STREAM BUFFER WITHIN THE LIMITS OF THIS PROJECT AS DETERMINED BY THE USGS MAP FOR COLUMBIA QUADRANGLE, BOONE COUNTY, MISSOURI AND ARTICLE X OF CHAPTER 12A OF THE CITY OF COLUMBIA CODE OF ORDINANCES.

THERE IS NO CLIMAX FOREST, AS DEFINED BY THE CITY OF COLUMBIA, LOCATED WITHIN THE LIMITS OF THIS PLAT.

ANY FILL PLACEMENT WITHIN STREET RIGHT-OF-WAY SHALL BE INSPECTED BY THE CITY OF COLUMBIA.

ALL SLOPES ARE 3:1 OR FLATTER UNLESS OTHERWISE NOTED.

IT IS THE INTENT OF THESE PLANS TO COMPLY WITH THE REQUIREMENTS OF THE MO-DNR CLEAN WATER COMMISSION.

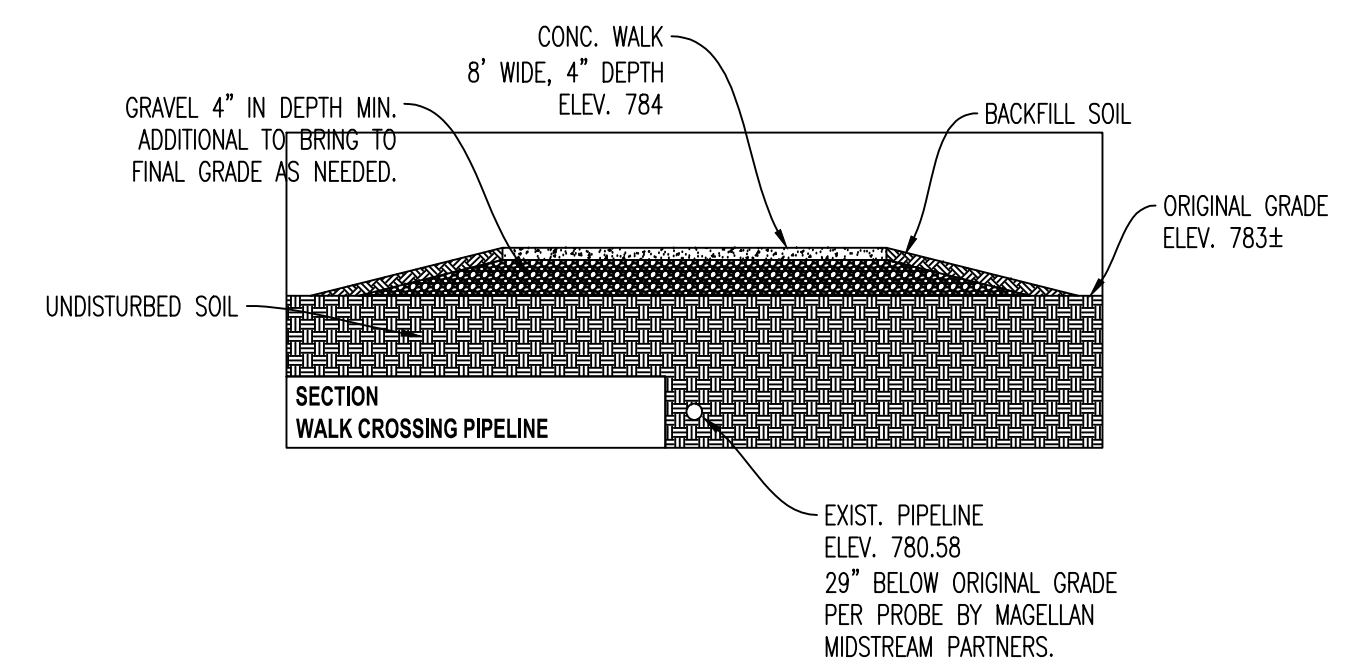
ALL DISTURBED AREAS WITHIN THE "LIMITS OF DISTURBANCE" SHALL BE FINE GRADED, SEEDED, AND MULCHED.

THE CONTRACTOR IS RESPONSIBLE FOR MAINTAINING ALL EROSION CONTROL DEVICES AND REMOVING THEM ONCE THE SITE IS STABILIZED.

ALL EXCAVATION WITHIN THE STREET RIGHT-OF-WAY SHALL BE BACKFILLED PER CURRENT CITY OF COLUMBIA SPECIFICATIONS.

LEGEND OF SYMBOLS:

---	EXISTING CURB	FF-XXXX	FINISH FLOOR OF STRUCTURE
---	PROPOSED CURB	XXXX.XX TC	PROPOSED TOP OF CURB ELEVATION
XXXXXX	RIP RAP	XXXX.XX TP	PROPOSED TOP OF PAVEMENT ELEVATION
---	EXISTING STRUCTURE	XXXX.XX FG	PROPOSED FINISH GRADE ELEVATION
---	EXISTING TREELINE	XXXX.XX TW	PROPOSED TOP OF WALL
---	PROPOSED TREELINE	XX	LOT NUMBER
---	EDGE OF WATERWAY	X	STORM SEWER STRUCTURE LABEL
---	EXISTING WATERLINE	X	SANITARY SEWER STRUCTURE LABEL
---	PROPOSED WATERLINE	H.P.	HIGH POINT
---	EXISTING GAS LINE	L.P.	LOW POINT
---	PROPOSED GAS LINE	---	EXISTING SIGNS
---	EXISTING UNDERGROUND TELEPHONE	---	EXISTING POWER POLE
---	EXISTING UNDERGROUND CABLE TELEVISION	---	EXISTING GAS VALVE
---	EXISTING HIGH VOLTAGE ELECTRIC	---	EXISTING WATER VALVE
---	EXISTING OVERHEAD ELECTRIC	---	EXISTING GAS METER
---	EXISTING UNDERGROUND ELECTRIC	---	EXISTING WATER METER
---	EXISTING OVERHEAD ELEC. & TV	---	EXISTING FIRE HYDRANT
---	EXISTING OVERHEAD ELEC., TV & TELE.	---	MANHOLE
---	EXISTING SANITARY SEWER	---	EXISTING SANITARY SEWER LATERAL
---	PROPOSED SANITARY SEWER	---	PROPOSED SANITARY SEWER LATERAL
---	EXISTING MINOR CONTOUR	---	PROPOSED TRACER WIRE TEST STATION BOX
---	EXISTING MAJOR CONTOUR	---	EXISTING AIR CONDITIONER
---	PROPOSED MINOR CONTOUR	---	EXISTING TELEPHONE PEDESTAL
---	PROPOSED MAJOR CONTOUR	---	EXISTING ELECTRICAL TRANSFORMER
---	100 YEAR FLOOD PLAIN	---	EXISTING ELECTRIC METER
---	FLOODWAY	---	EXISTING LIGHT POLE
---	ORDINARY HIGH WATER MARK	---	EXISTING GUY WIRE
---	STREAM SIDE BUFFER		
---	OUTER STREAM BUFFER		



GRADING NOTES:
 1. ALL PARKING LOT ELEVATIONS ARE BASED ON THE FINISHED FINAL ELEVATION OF THE EXISTING STORM BOX LOCATED ACROSS DUMAS DRIVE.
 2. ALL WALK ELEVATIONS ARE BASED ON CITY OF COLUMBIA TOPO.

REVISIONS:

NO.	DATE
ORIGINAL	04/21/2021

THIS SHEET HAS BEEN SOLED SEALED AND DATED ELECTRONICALLY

PREPARED BY: **CROCKETT ENGINEERS & ARCHITECTS**
 1008 N. Wilson Blvd., Suite 100
 Columbia, Missouri 65203
 (572) 487-0299
 www.crockettingeering.com
 Crockett Engineering Consultants, LLC
 Missouri Certificate of Authority #00000001

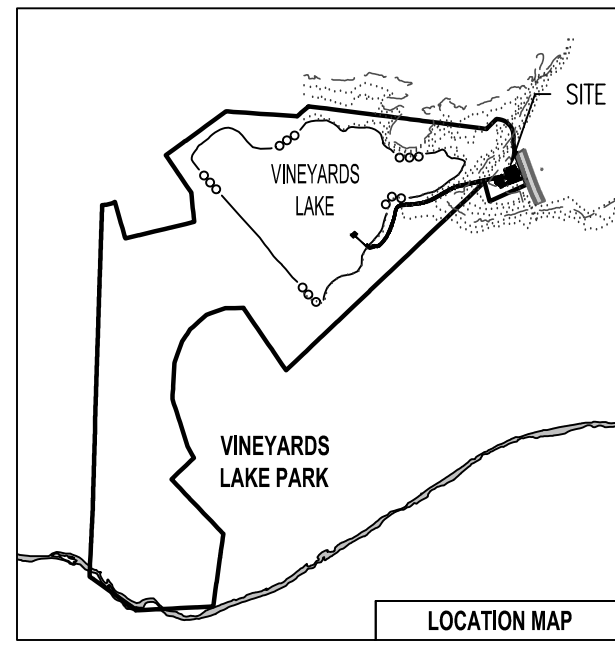
OWNER:
 CITY OF COLUMBIA
 P.O. BOX 6005
 COLUMBIA, MO 65205

VINEYARDS LAKE PARK
 COLUMBIA, BOONE COUNTY, MISSOURI

DRAWING INCLUDES:

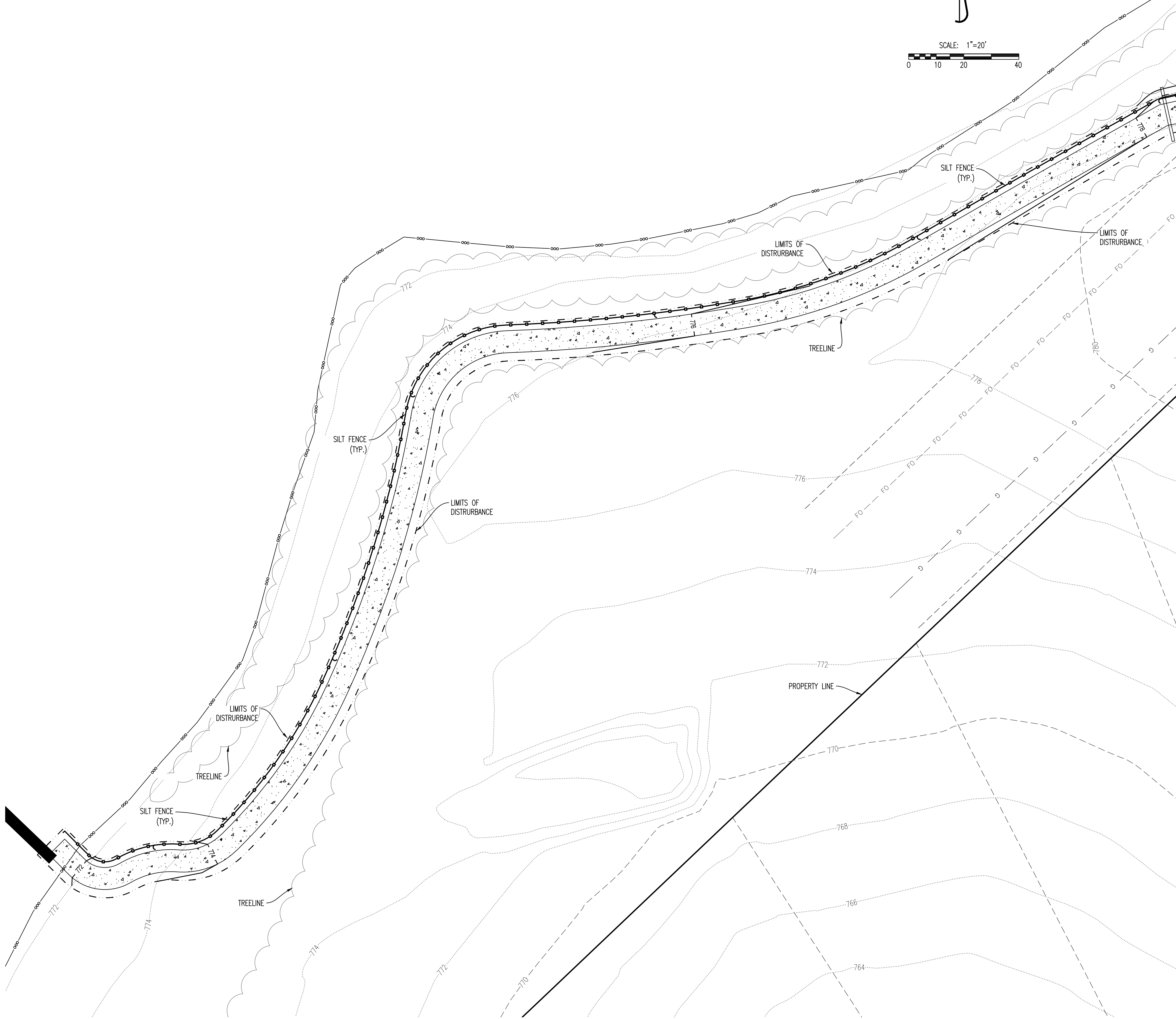
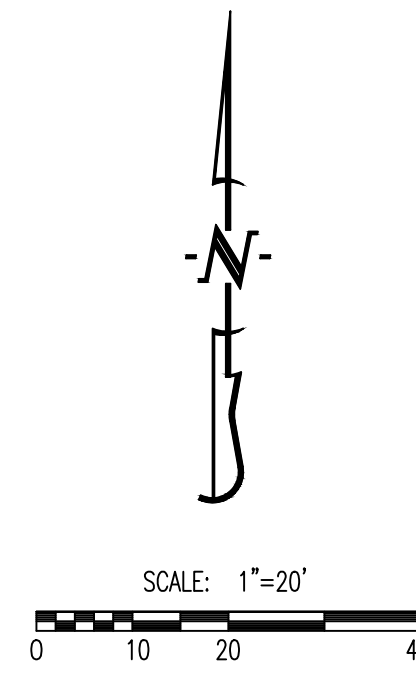
SITE PLAN SHEET 1 OF 2

DESIGNED: TDC
DRAWN: IWC
PROJECT NO.: 041371
SHEET: CE1



FLOOD PLAIN STATEMENT:

THIS TRACT IS NOT LOCATED WITHIN A SPECIAL FLOOD HAZARD AREA SUBJECT TO SEC 29-2.3(D)(4)(I) OF THE CODE OF ORDINANCES AND AS SHOWN ON THE FEMA F.I.R.M. PANEL #2901900292E, DATED APRIL 19, 2017.



ALL STREET, STORM DRAIN, AND SANITARY SEWER CONSTRUCTION TO BE IN ACCORDANCE WITH THE CITY OF COLUMBIA "STREET, STORM DRAIN, AND SANITARY SEWER SPECIFICATIONS AND STANDARDS" (CURRENT EDITION).

CONTRACTOR WILL BE RESPONSIBLE FOR PLACEMENT AND MAINTENANCE OF TRAFFIC CONTROL DEVICES NECESSARY TO COMPLETE THEIR PORTION OF WORK. THE DEVICES AND METHODS EMPLOYED WILL COMPLY WITH THE CURRENT VERSION OF THE MANUAL ON UNIFORM TRAFFIC CONTROL DEVICES.

EXISTING UTILITIES SHOWN FOR REFERENCE ONLY. CONTRACTOR SHALL COORDINATE LOCATES (HORIZONTAL AND VERTICAL) PRIOR TO ANY EXCAVATION.

ALL EXCAVATION TO BE IN ACCORDANCE WITH SECTIONS 319.010-319.050, REVISED STATUTES OF THE STATE OF MISSOURI. SUCH COMPLIANCE SHALL NOT, HOWEVER, EXCUSE ANY PERSON MAKING ANY EXCAVATION FROM DOING SO IN A CAREFUL AND PRUDENT MANNER, NOR SHALL IT EXCUSE SUCH PERSON FROM LIABILITY FOR ANY DAMAGE OR INJURY TO UNDERGROUND UTILITIES RESULTING FROM THE EXCAVATION.

ALL LAND DISTURBANCE ACTIVITIES SHALL BE IN ACCORDANCE WITH CHAPTER 12A OF THE CITY OF COLUMBIA CODE OF ORDINANCES.

THERE IS NO REGULATED STREAM BUFFER WITHIN THE LIMITS OF THIS PROJECT AS DETERMINED BY THE USGS MAP FOR COLUMBIA QUADRANGLE, BOONE COUNTY, MISSOURI AND ARTICLE X OF CHAPTER 12A OF THE CITY OF COLUMBIA CODE OF ORDINANCES.

THERE IS NO CLIMAX FOREST, AS DEFINED BY THE CITY OF COLUMBIA, LOCATED WITHIN THE LIMITS OF THIS PLAT.

ANY FILL PLACEMENT WITHIN STREET RIGHT-OF-WAY SHALL BE INSPECTED BY THE CITY OF COLUMBIA.

ALL SLOPES ARE 3:1 OR FLATTER UNLESS OTHERWISE NOTED.

IT IS THE INTENT OF THESE PLANS TO COMPLY WITH THE REQUIREMENTS OF THE MO-DNR CLEAN WATER COMMISSION.

ALL DISTURBED AREAS WITHIN THE "LIMITS OF DISTURBANCE" SHALL BE FINE GRADED, SEEDED, AND MULCHED.

THE CONTRACTOR IS RESPONSIBLE FOR MAINTAINING ALL EROSION CONTROL DEVICES AND REMOVING THEM ONCE THE SITE IS STABILIZED.

ALL EXCAVATION WITHIN THE STREET RIGHT-OF-WAY SHALL BE BACKFILLED PER CURRENT CITY OF COLUMBIA SPECIFICATIONS.

GRADING NOTES:

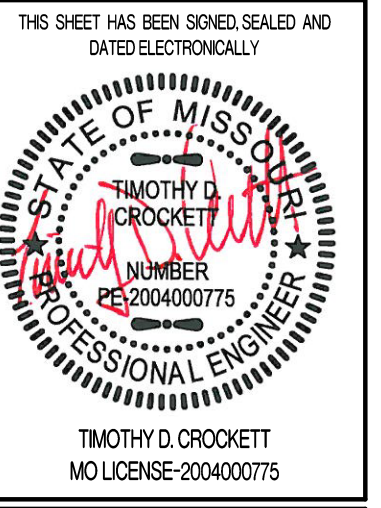
- ALL PARKING LOT ELEVATIONS ARE BASED ON THE FINISHED FINAL ELEVATION OF THE EXISTING STORM BOX LOCATED ACROSS DUMAS DRIVE.
- ALL WALK ELEVATIONS ARE BASED ON CITY OF COLUMBIA TOPO.

LEGEND OF SYMBOLS:

---	EXISTING CURB	FF-XXXX	FINISH FLOOR OF STRUCTURE
---	PROPOSED CURB	XXXX.XX TC	PROPOSED TOP OF CURB ELEVATION
XXXXXX	RIP RAP	XXXX.XX TP	PROPOSED TOP OF PAVEMENT ELEVATION
---	EXISTING STRUCTURE	XXXX.XX FG	PROPOSED FINISH GRADE ELEVATION
---	EXISTING TREELINE	XXXX.XX TW	PROPOSED TOP OF WALL
---	PROPOSED TREELINE	XX	LOT NUMBER
---	EDGE OF WATERWAY	X	STORM SEWER STRUCTURE LABEL
---	EXISTING WATERLINE	X	SANITARY SEWER STRUCTURE LABEL
---	PROPOSED WATERLINE	H.P.	HIGH POINT
---	EXISTING GAS LINE	L.P.	LOW POINT
---	PROPOSED GAS LINE	---	EXISTING SIGNS
---	EXISTING UNDERGROUND TELEPHONE	---	EXISTING POWER POLE
---	EXISTING UNDERGROUND CABLE TELEVISION	---	EXISTING GAS VALVE
---	EXISTING HIGH VOLTAGE ELECTRIC	---	EXISTING WATER VALVE
---	EXISTING OVERHEAD ELECTRIC	---	EXISTING GAS METER
---	EXISTING UNDERGROUND ELECTRIC	---	EXISTING WATER METER
---	EXISTING OVERHEAD ELEC. & TV	---	EXISTING FIRE HYDRANT
---	EXISTING OVERHEAD ELEC., TV & TELE.	---	MANHOLE
---	EXISTING SANITARY SEWER	---	EXISTING SANITARY SEWER LATERAL
---	PROPOSED SANITARY SEWER	---	PROPOSED SANITARY SEWER LATERAL
---	EXISTING MINOR CONTOUR	---	PROPOSED TRACER WIRE TEST STATION BOX
---	EXISTING MAJOR CONTOUR	---	EXISTING AIR CONDITIONER
---	PROPOSED MINOR CONTOUR	---	EXISTING TELEPHONE PEDESTAL
---	PROPOSED MAJOR CONTOUR	---	EXISTING ELECTRICAL TRANSFORMER
---	100 YEAR FLOOD PLAIN	---	EXISTING ELECTRIC METER
---	FLOODWAY	---	EXISTING LIGHT POLE
---	ORDINARY HIGH WATER MARK	---	EXISTING GUY WIRE
---	STREAM SIDE BUFFER		
---	OUTER STREAM BUFFER		

REVISIONS:

NO.	DATE
ORIGINAL	04/21/2021



PREPARED BY:
CROCKETT ENGINEERS & PLANNERS
 1008 N. Wilson Blvd., Ste. 100
 Columbia, Missouri 65203
 (314) 487-0299
 www.crockettengineering.com
 Crockett Engineering Consultants, LLC
 Missouri Certificate of Authority #00000001

OWNER:
 CITY OF COLUMBIA
 P.O. BOX 6005
 COLUMBIA, MO 65205

VINEYARDS LAKE PARK
 COLUMBIA, BOONE COUNTY, MISSOURI

DRAWING INCLUDES:
 SITE PLAN
 SHEET 2 OF 2

DESIGNED: TDC
 DRAWN: IWC
 PROJECT NO: 041371
 SHEET: CE 2