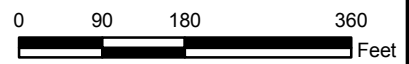


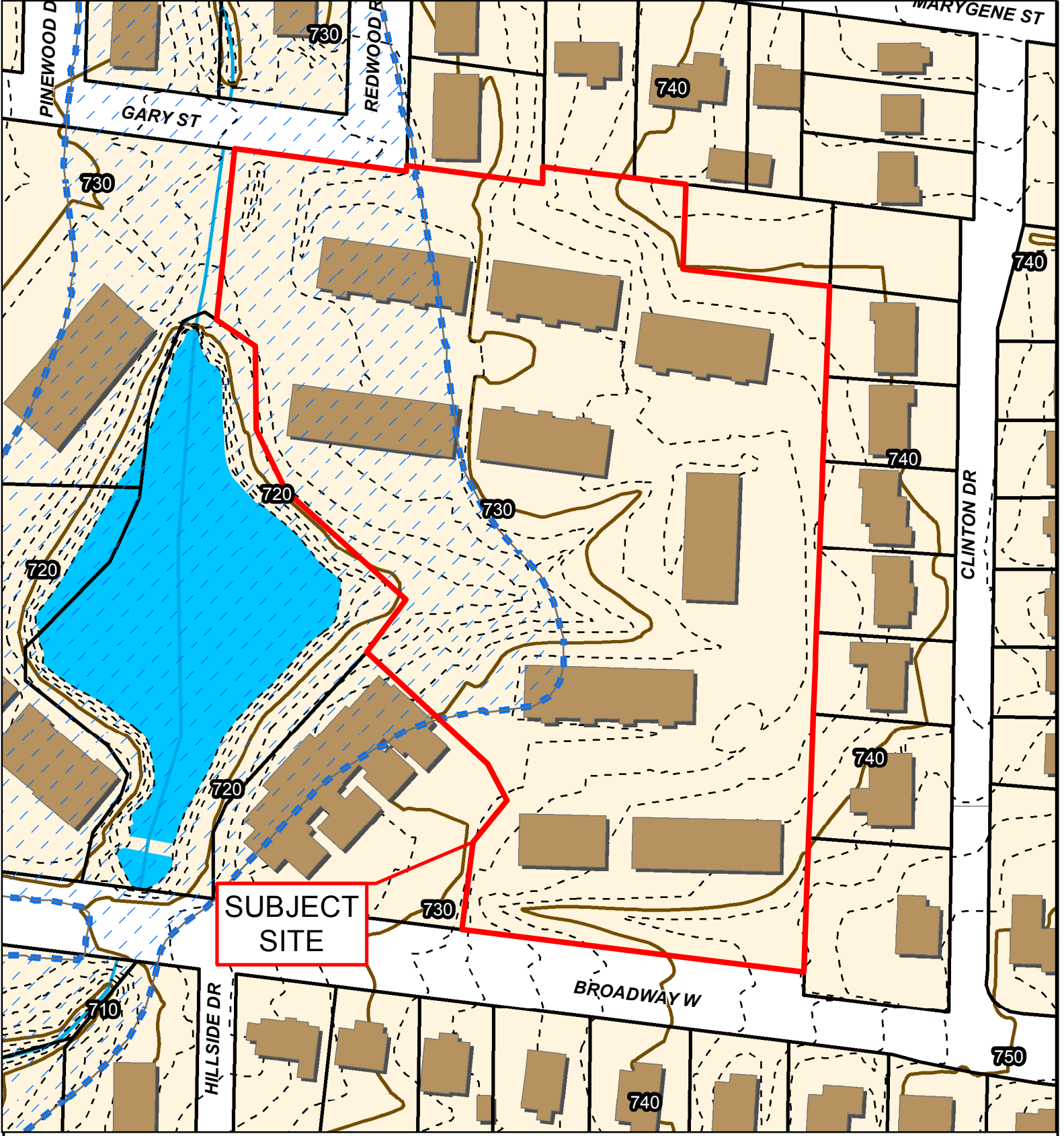
2015 Orthophoto Source: Boone County Assessor

Case #16-103: Lake Broadway Condominiums PUD Major Amendment



- City of Columbia Zoning
- Parcels
- 100-Year Flood Plain



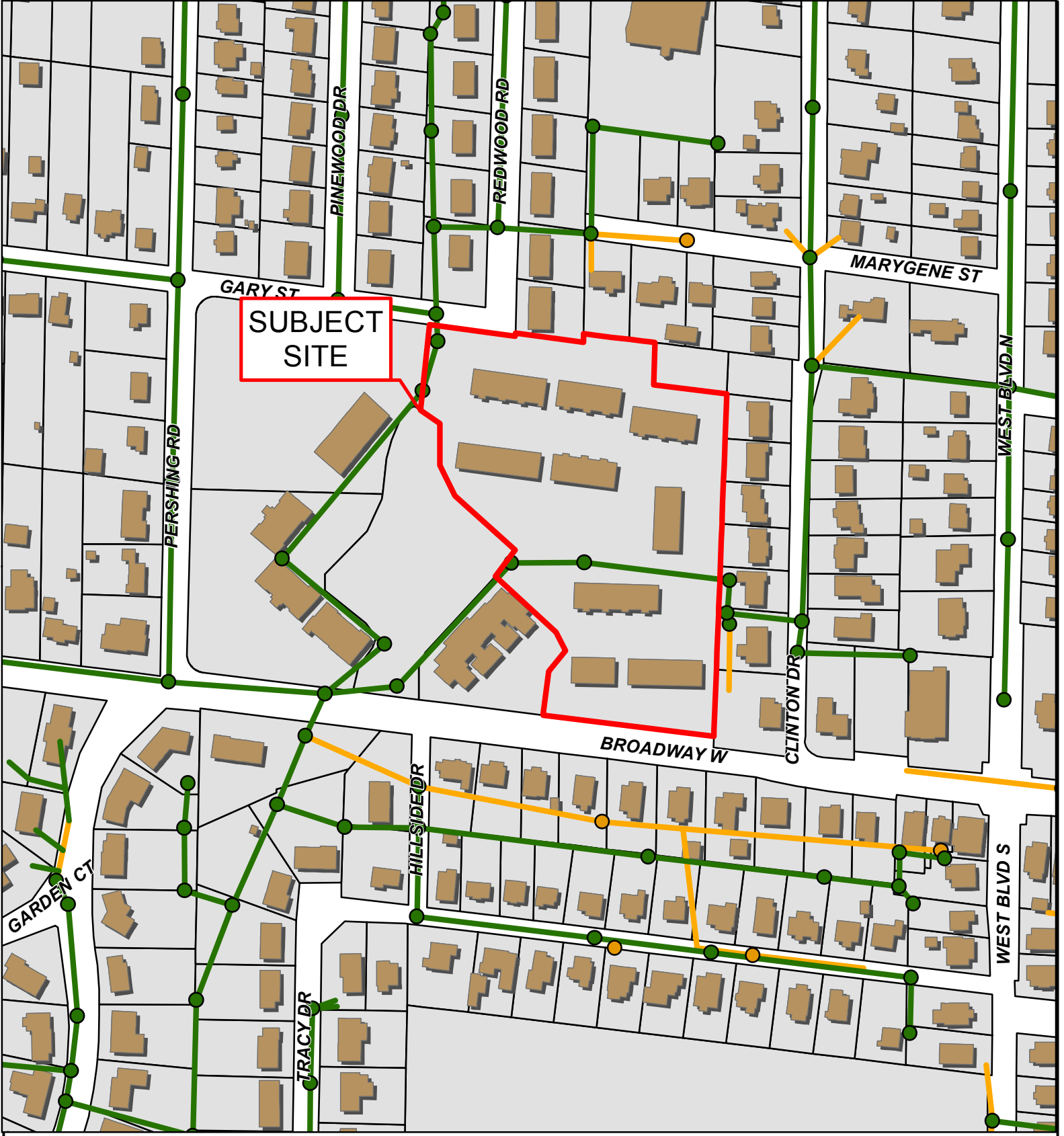


Case #16-103: Lake Broadway Condominiums PUD Major Amendment



- 10 Foot Contour Lines
- 2 Foot Contour Lines
- Stream
- Parcels
- Building Footprint
- 100-Year Flood Plain
- Bodies of Water





Case #16-103: Lake Broadway Condominiums PUD Major Amendment

