

Source: Nearmap, <https://www.nearmap.com/us/en>

Case # 21-2024 - 709 Russell Boulevard Preliminary Plat & Design Adjustment



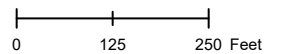
City Zoning Parcels

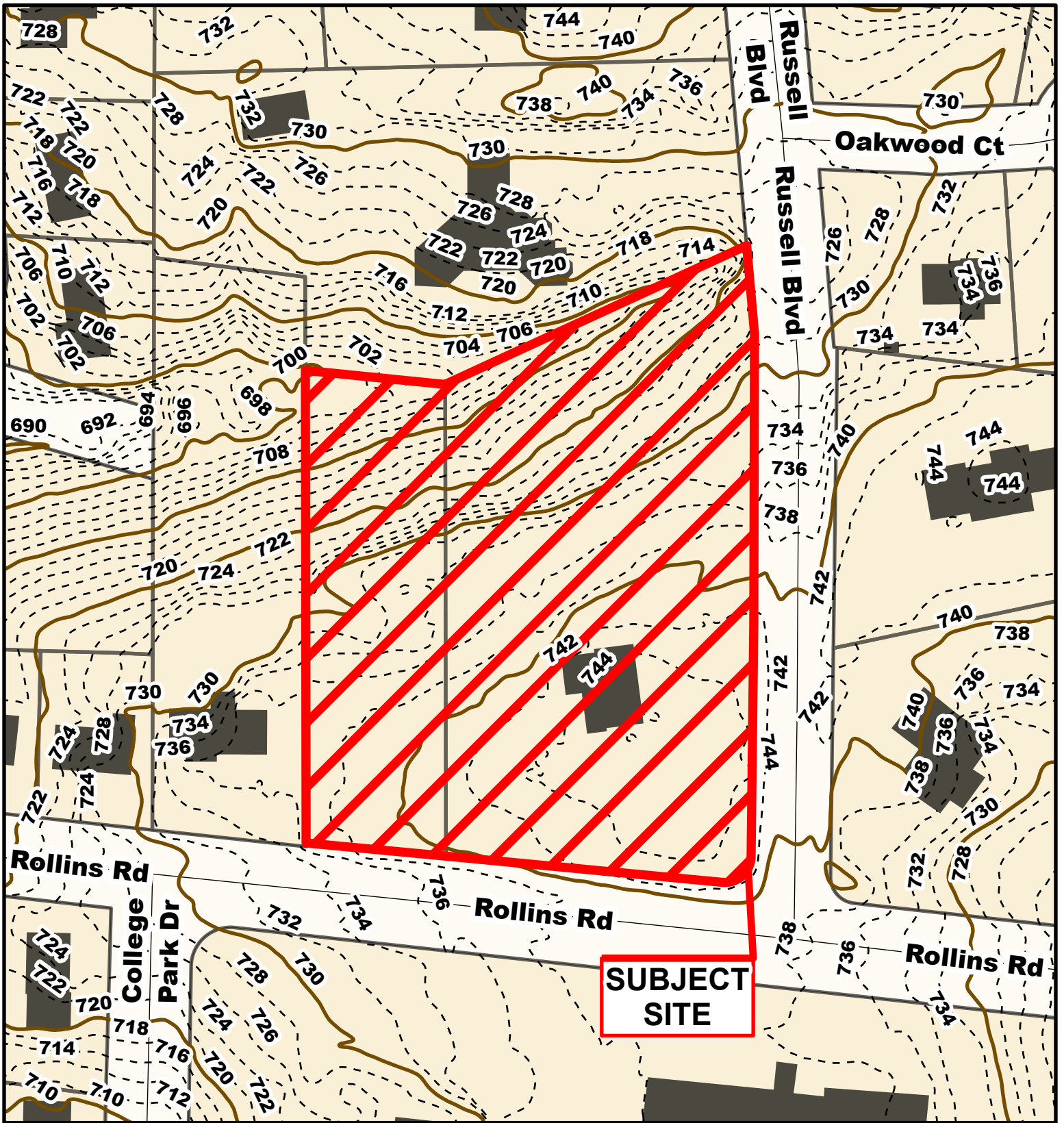


Parcel Data Source: Boone County Assessor

Created by The City of Columbia - Community Development Department

2022 Imagery: NearMap

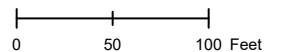


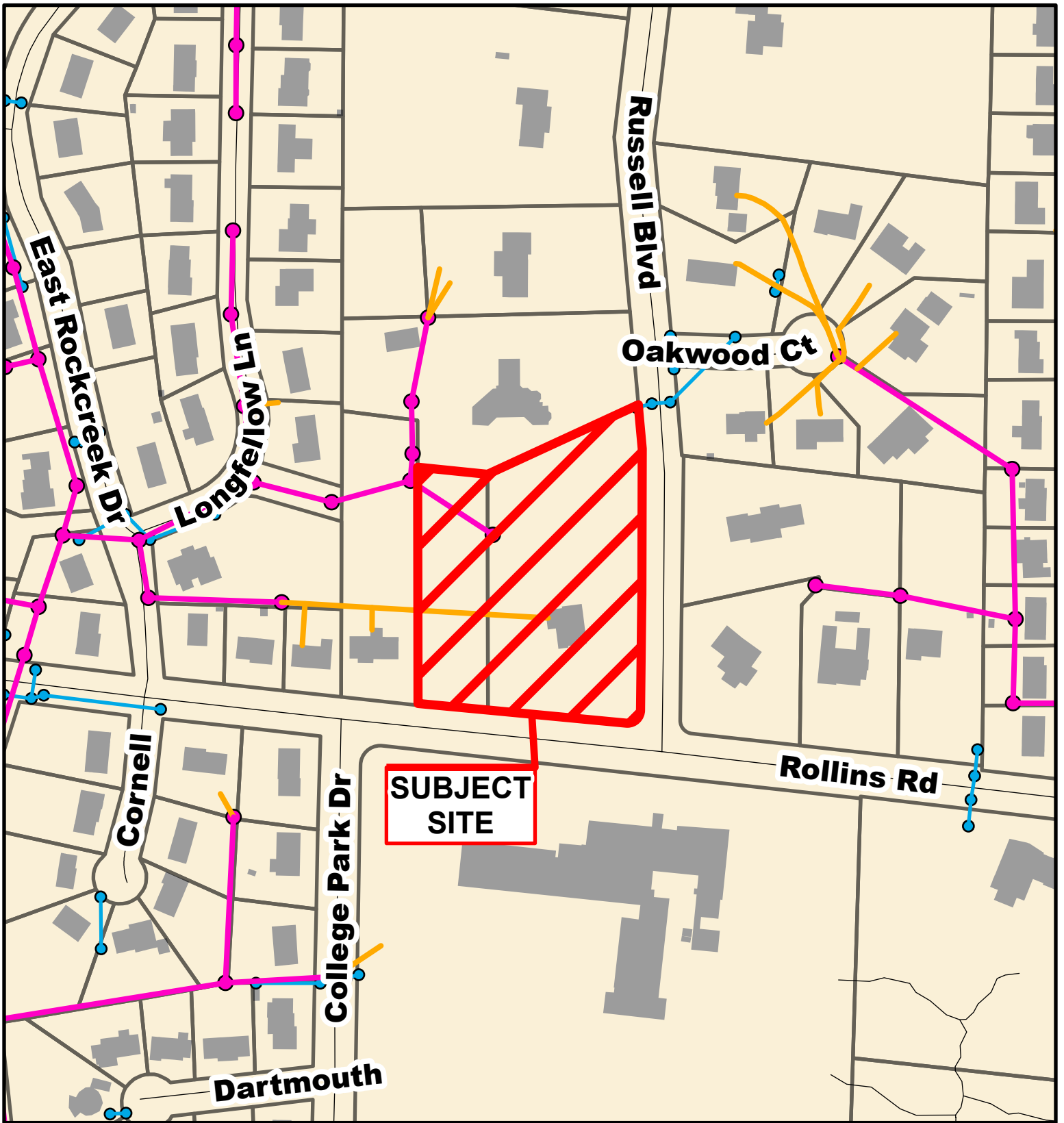


Case # 21-2024 - 709 Russell Boulevard Preliminary Plat & Design Adjustment



10 Foot Contour Lines
 Parcels
 2 Foot Contour Lines





Case # 21-2024 - 709 Russell Boulevard Preliminary Plat & Design Adjustment



- City Sanitary Line
- City Storm Lines
- Private Sanitary Line
- Parcels

