

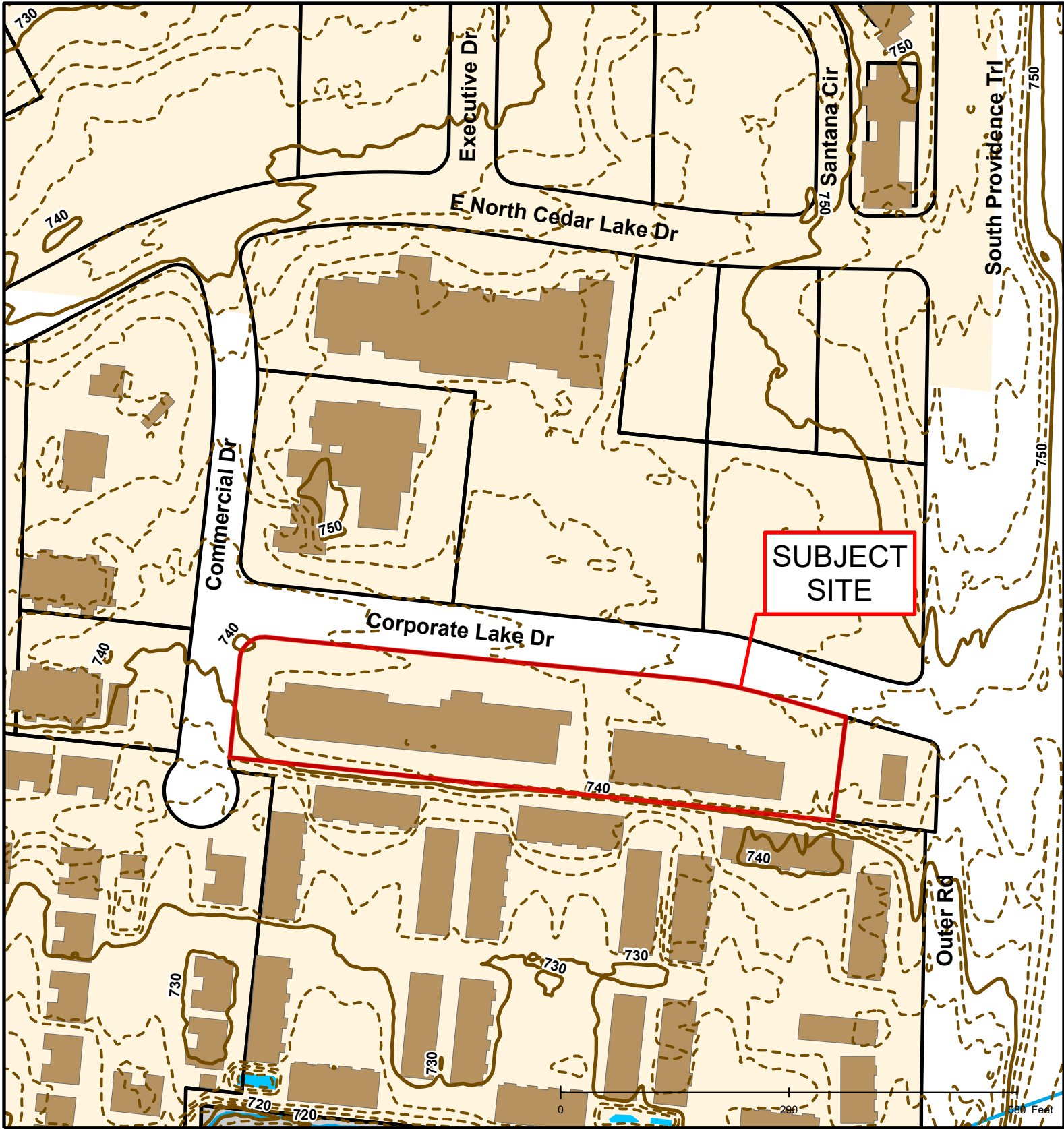


#18-155: Corporate Lake Plat 13A Replat



| | | | |
|--|-------------|--|---------------------|
| | Roads | | Boone County Zoning |
| | City Zoning | | Columbia City Limit |
| | Parcels | | CityViewparcels |

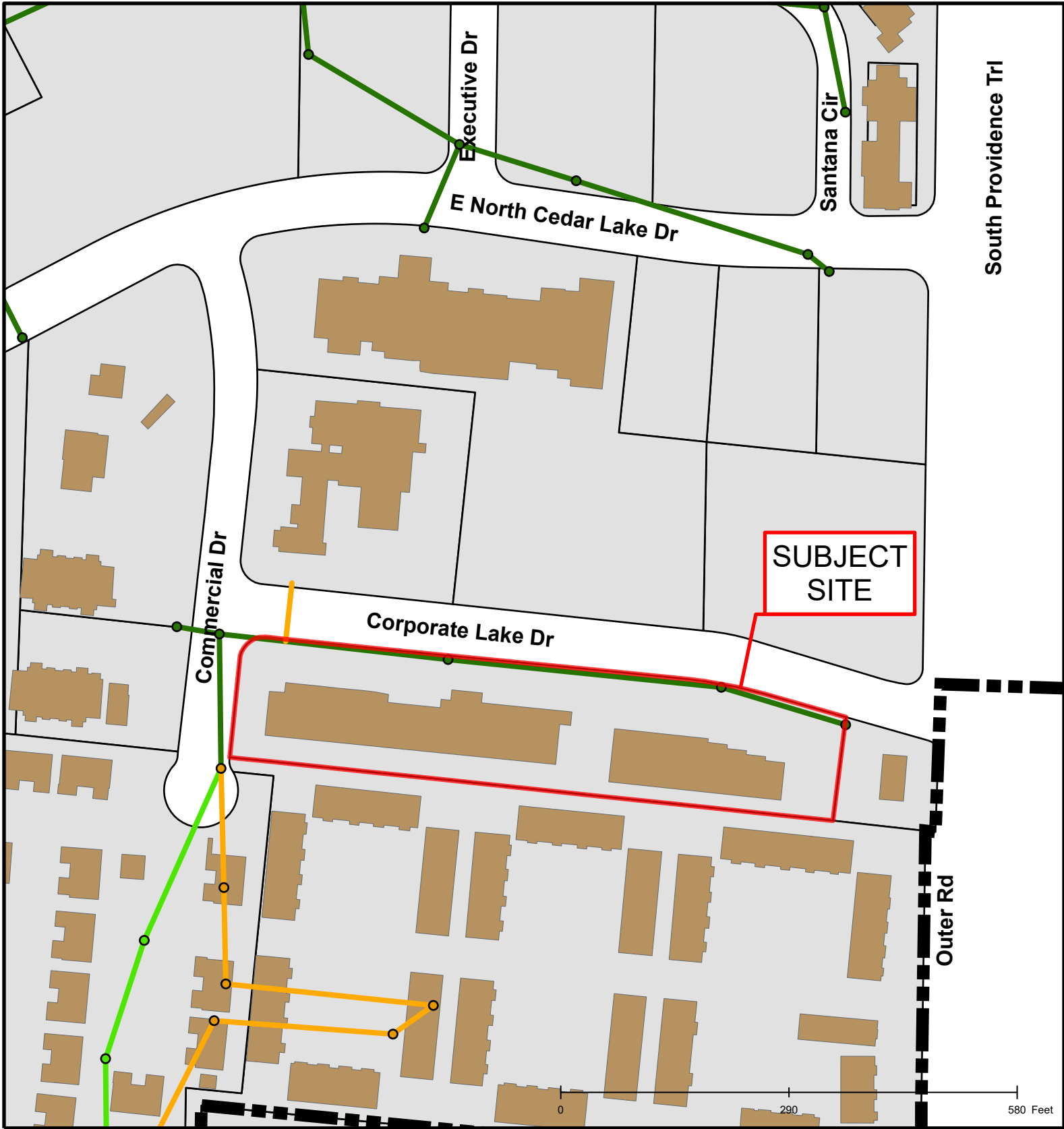




#18-155: Corporate Lake Plat 13A Replat

| | | |
|-----------------------|----------------------|-----------------|
| Roads | 2 Foot Contour Lines | Streams |
| Building Footprint | Parcels | Bodies of Water |
| 10 Foot Contour Lines | Stream | City Zoning |





#18-155: Corporate Lake Plat 13A Replat

| | | |
|----------------------------|--------------------|-----------------------|
| BCRSD | Roads | Private Sanitary Line |
| City Sanitary Structure | BCRSD | Columbia City Limit |
| Private Sanitary Structure | City Sanitary Line | Building Footprint |



Created by The City of Columbia - Community Development Department

Parcel Data Source: Boone County Assessor

2015 Imagery: Boone County Assessor's Office

Hillshade Data: Boone County GIS Office