

# #17-172: Fred Overton Development, Inc. & Andrews ET AL Annexation & Permanent Zoning



Roads	Boone County Zoning
City Zoning	Columbia City Limit
Parcels	CityViewparcels

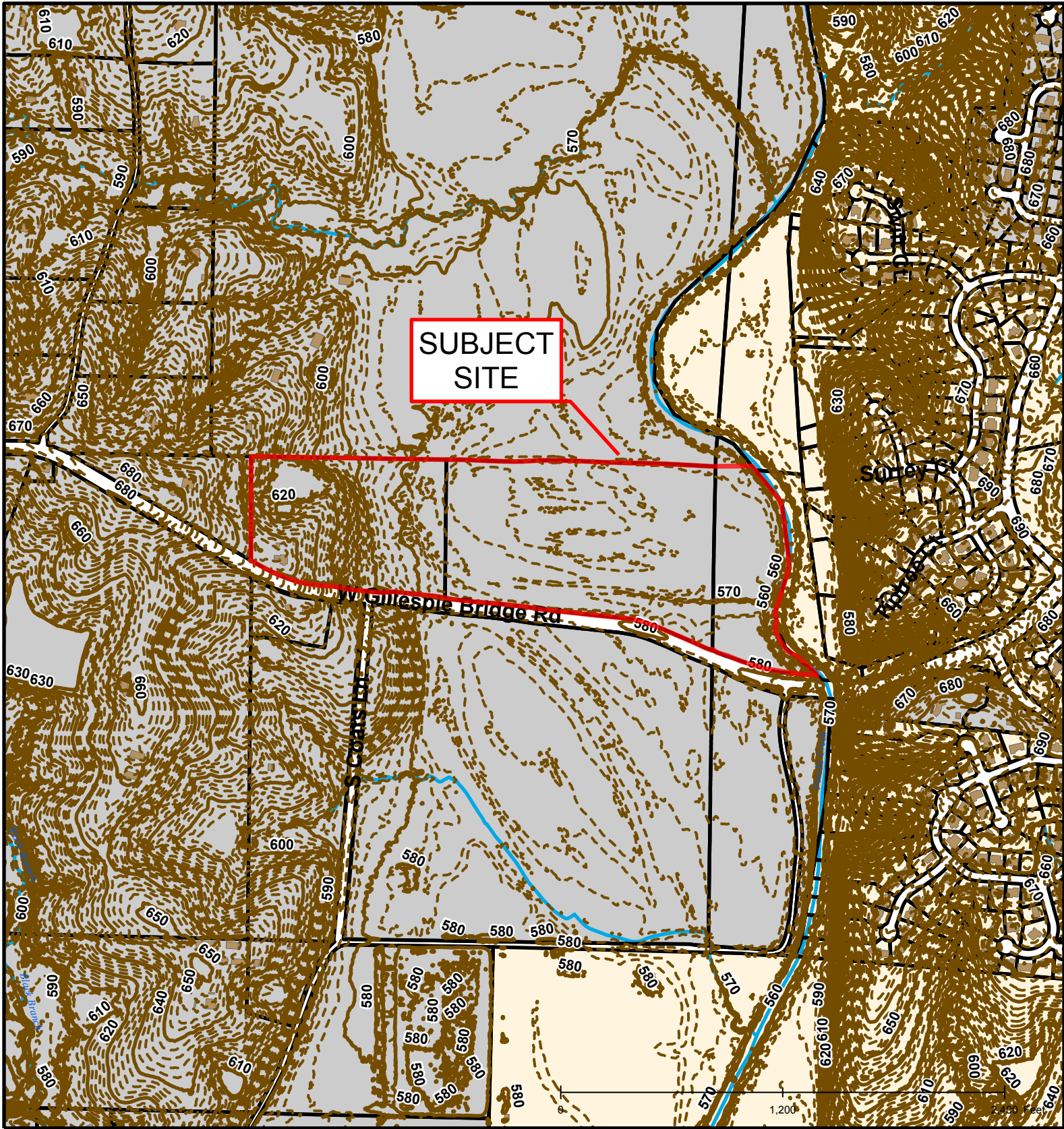


Created by The City of Columbia - Community Development Department

Parcel Data Source: Boone County Assessor

2015 Imagery: Boone County Assessor's Office

Hillshade Data: Boone County GIS Office



**SUBJECT SITE**

# #17-172: Fred Overton Development, Inc. & Andrews ET AL Annexation & Permanent Zoning

Roads	Stream	Boone County Zoning
Building Footprint	Bodies of Water	City Zoning
Parcels		

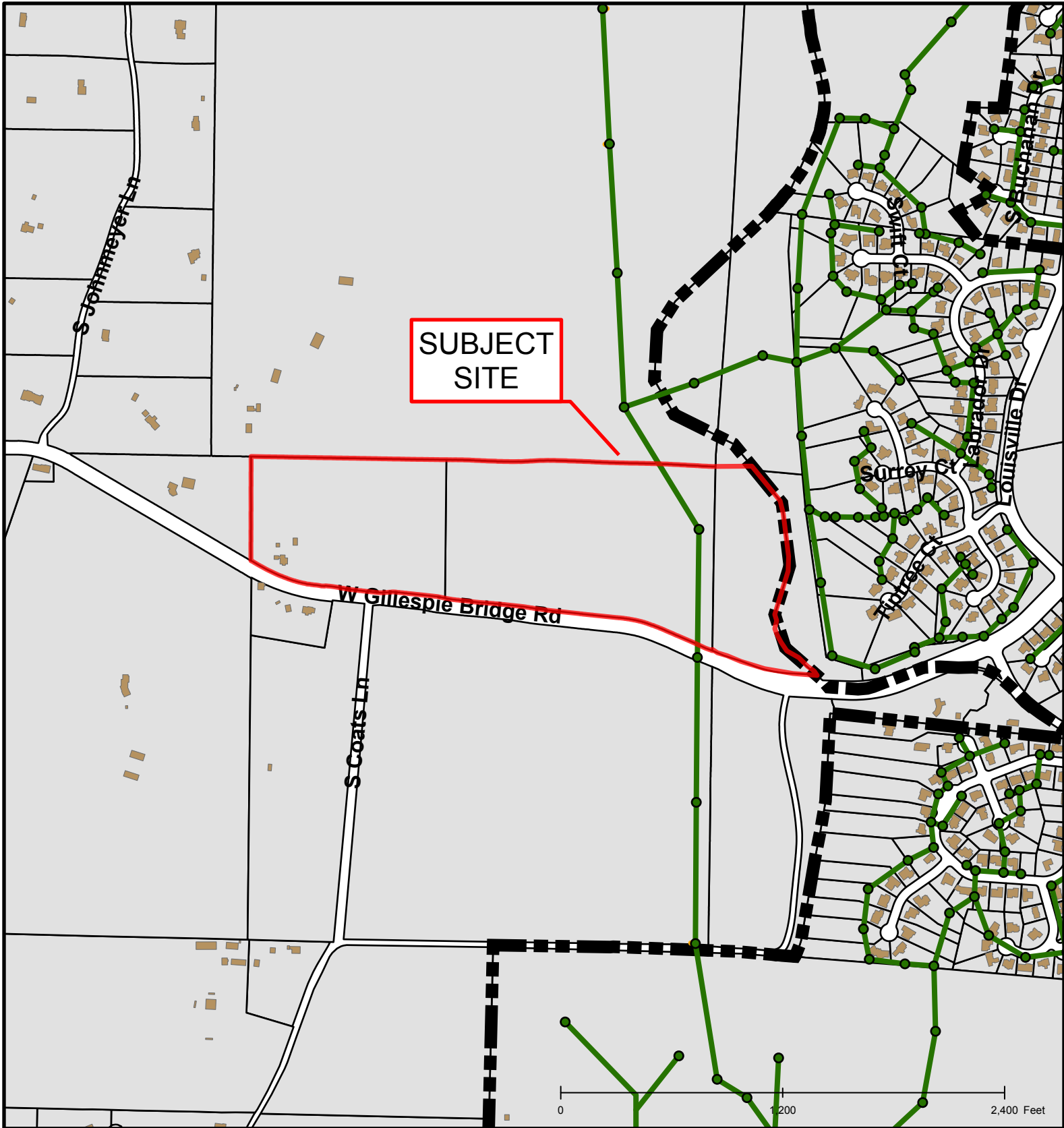


Created by The City of Columbia - Community Development Department

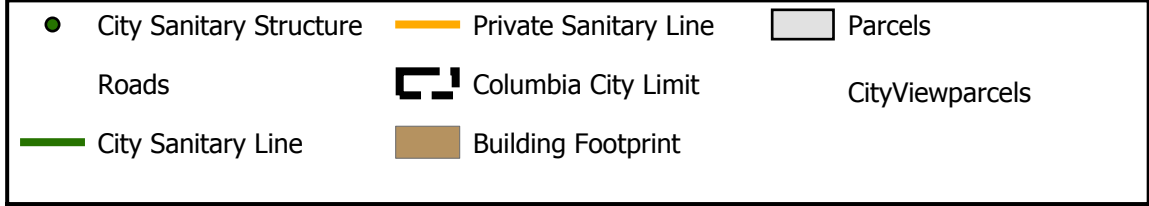
Parcel Data Source: Boone County Assessor

2015 Imagery: Boone County Assessor's Office

Hillshade Data: Boone County GIS Office



# #17-172: Fred Overton Development, Inc. & Andrews ET AL Annexation & Permanent Zoning



Created by The City of Columbia - Community Development Department

Parcel Data Source: Boone County Assessor

2015 Imagery: Boone County Assessor's Office

Hillshade Data: Boone County GIS Office