

City of Columbia
May Economic Report



Issued: 05-27-2026

Prepared by

Deepayan Debnath, Chief Economist
Shane Edwards, Economic Analyst
Finance Department

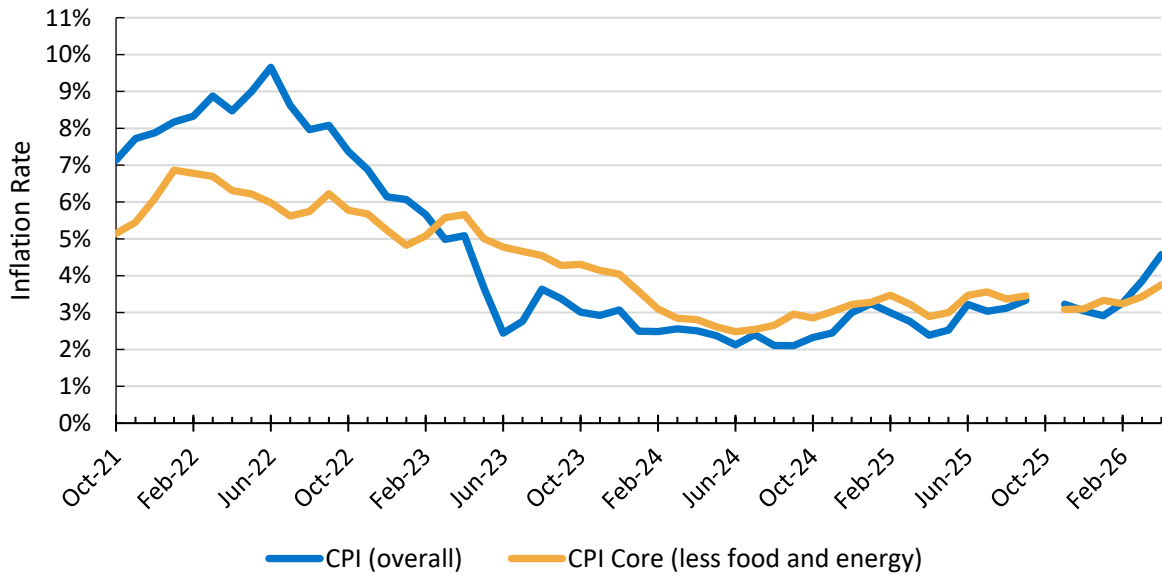
Summary

- In May, the retail gasoline price rose to \$4.609¹. This may be due to the ongoing conflicts with Iran. The energy inflation is increasing at 17.54% and 15.85% year-over-year for the National and the Midwest² class size B/C, respectively, which is the highest since November 2022 (COVID-era) for both.
- On March 25th, 2026, the U.S. Environmental Protection Agency issued a temporary emergency fuel waiver to allow nationwide sales of E15, effectively removing the federal impediments to selling E10. This is in hopes of easing the strain on the domestic gasoline supply chain ahead of the summer season. This waiver went into effect on May 1st of this year.
- The National Headline CPI increased by 3.81% year over year in April 2026. This was an increase from 3.26% in March. Following the national trend, the Midwestern Headline CPI in April of 2026 increased 4.57% year over year and increased 0.71 percentage points month over month.
- Core CPI both at the national and local levels³ is increasing year-over-year by 2.75% and 3.75%, respectively. It was 2.60% and 3.86% at the national and local levels in March.
- In April 2026, the national unemployment rate was 4.34%, which was a 0.08 percentage point increase over March's unemployment rate of 4.26%.
- In March 2026, Missouri's unemployment rate decreased by 0.13 percentage points to 4.17% from 4.30% in February 2026. Similarly, the unemployment rate in Columbia, MO, increased by about 0.09 percentage points during this period, from 3.46% to 3.55%.
- In April 2026, the median home price in Boone County increased by 11.33% when compared to the same month last year. In contrast, the median home price remains the same both in March and April.
- The median home price in Boone County in April 2026 was \$345,000, which was around \$65,000 higher than the median price in Missouri.
- In April 2026, Boone County home sales totaled 205, while 197 were sold during the same month last year. The 8-home increase between this time frame was solely from new-construction homes.
- Sales tax collections in May 2026 (March 2026 tax period) totaled around \$5.09 million, while use tax collections came to \$999,508, respectively, 6.89% (or \$327,934) and 22.90% (or \$186,261) higher than those of the same month, last year.
- The total Sales and Use Tax collections for FY 2026 are currently 3.71% (or \$1.35 million) higher than the same period for FY 2025.
- Marijuana-related excise tax collection in May 2026 (March 2026 tax period) was \$130,935, up more than double (or \$97,752 specifically) compared to May 2025. The marijuana-related excise tax continues to increase in FY 2026.

¹ https://www.eia.gov/dnav/pet/hist/leafhandler.ashx?f=m&n=p&s=emm_epm0_pte_nus_dpg

^{2,3} Midwest Size Class B/C with a population of less than 2.5 million.

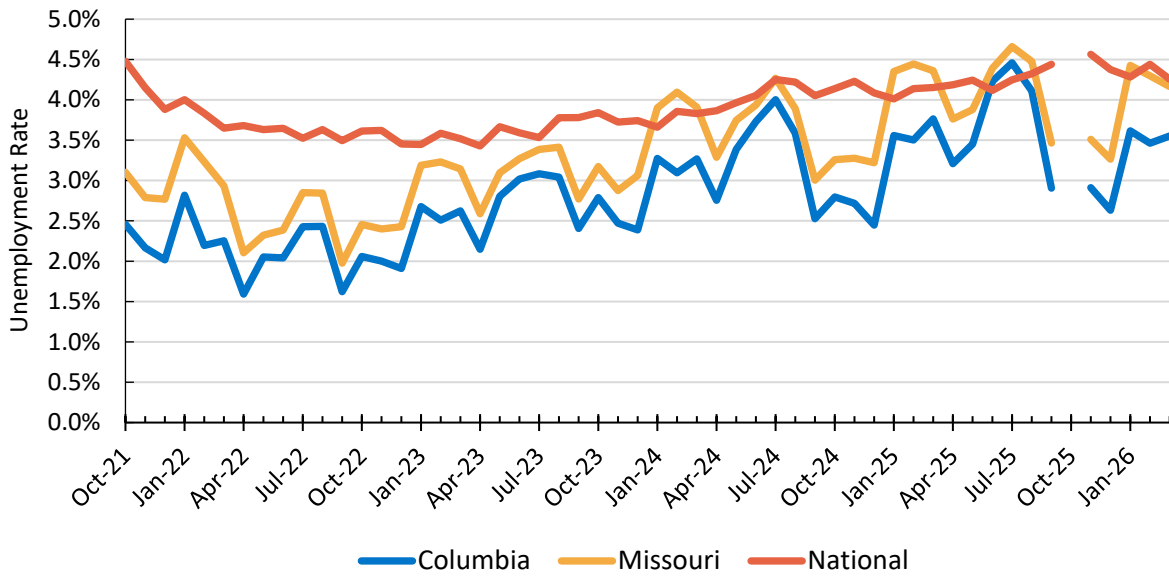
Chart 1: Monthly Consumer Inflation in “Midwest Cities Less Than 2.5 Million People”



- Overall headline inflation rate increased year-over-year by 2.18%, from 2.39% last April to 4.57% in April of 2026. Core inflation (excluding food and energy) also increased by 0.86 percentage points, from 2.89% last April to 3.75% this month.
- Due to the government shutdown, no data was reported for October, and it cannot be calculated retroactively. Hence, there was a gap in the graph during this time frame.

Source: U.S. Bureau of Labor Statistics, <https://beta.bls.gov/dataViewer/view/timeseries/CUURN200SA0L1E>
 Last Updated: 05/18/2026

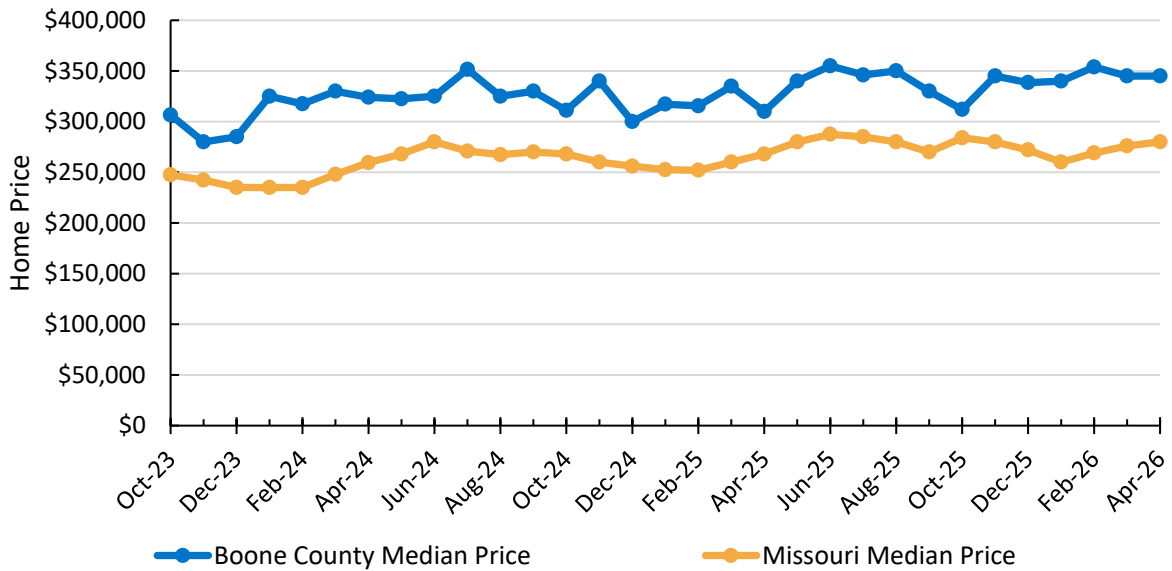
Chart 2: Columbia, MO Monthly Unemployment Rate



- Columbia’s unemployment rate for March increased 0.09 percentage points from the same period last year. In contrast, Missouri’s unemployment rate decreased by 0.13 percentage points during this time, and the national rate decreased by 0.18 percentage points.
- Due to the government shutdown, no data was reported for October, and it cannot be calculated retroactively. Hence, there was a gap in the graph during this time frame.

Source: U.S. Bureau of Labor Statistics, <https://beta.bls.gov/dataViewer/view/timeseries/LAUMT29178600000004>
Last Updated: 05/20/2026

Chart 3: Boone County Single Family Median Home Price

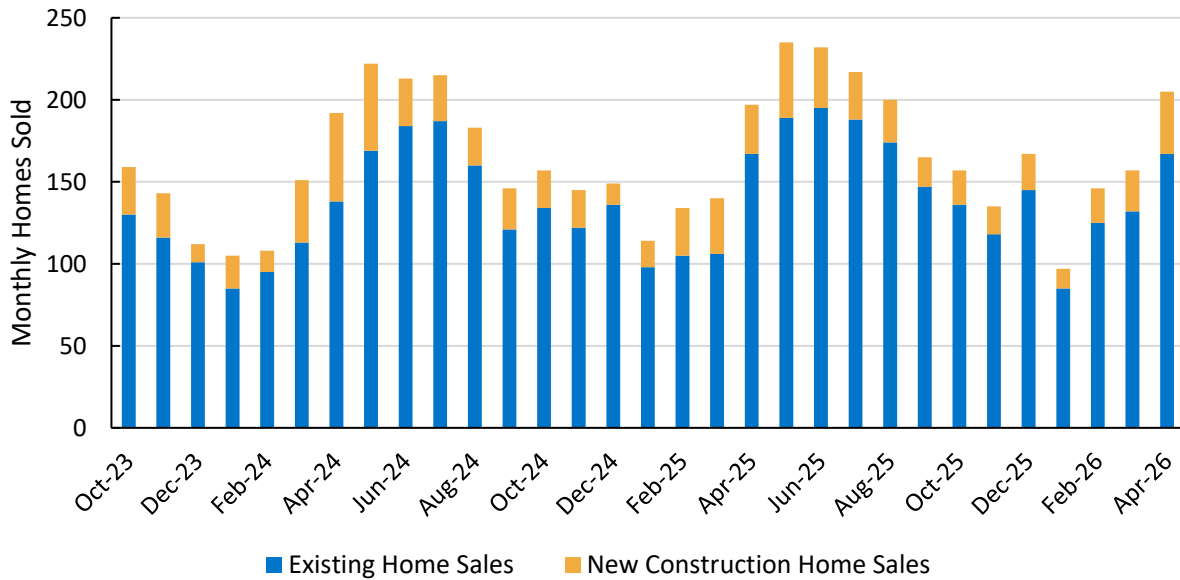


- In April 2026, the median single-family home price in Boone County was \$345,000.
- The median price of a single-family home in Missouri for April was \$280,000, \$65,000 lower than that of Columbia.
- The median single-family home price in Boone County is, on average, roughly \$80,000 higher compared to the average home in the state of Missouri.

Source: Columbia Board of Realtors, <https://www.midmohomefinder.com/page/statistics>

Last Updated: 05/18/2026

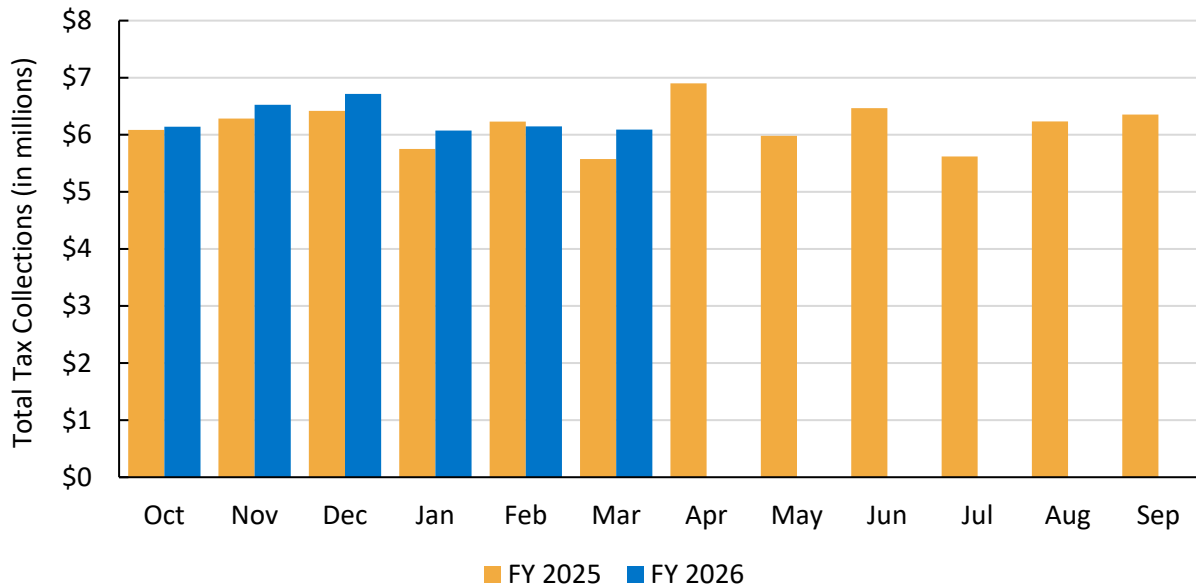
Chart 4: Boone County Monthly Home Sales



- In April 2026, 205 single-family homes were sold, compared with 197 during the same period in 2025. The entire increase in home sales came from new construction homes, which were 30 in April of 2025 and 38 in April of this year.
- Sales have increased by an average of eight per month over the past year. This is a stark contrast to the same period in the previous year, when sales decreased by an average of less than one month over month.

Source: Columbia Board of Realtors, <https://www.midmohomefinder.com/page/statistics>
 Last Updated: 05/18/2026

Chart 5: City of Columbia Total Sales & Use Tax Collections



- City of Columbia’s total sales and use tax collections for May (March 2026 tax period) in FY 2026 totaled around \$6.09 million, up 9.22% (\$514,195) from the same month last year.
- The year-to-date collections for FY 2026 are \$37.7 million, 3.71% (or \$1.35 million) higher than the same period last fiscal year.
- In FY 2026, use tax collections from online purchases have increased by approximately 9.75% compared to the same period in FY 2025. Likewise, although not as much, sales tax collections are up 2.68%.

Source: City of Columbia
 Last Updated: 05/18/2026

Glossary

Term	Definition
Employment	<ul style="list-style-type: none"> • Worked at least 1 hour as a paid employee. • Worked at least 1 hour in their own business, profession, trade, or farm. • Were temporarily absent from their job, business, or farm, whether or not they were paid for the time off. • Worked without pay for a minimum of 15 hours in a business or farm owned by a member of their family.
Unemployment	<ul style="list-style-type: none"> • They were not employed during the survey reference week. • They were available for work during the survey reference week, except for temporary illness. • They made at least one specific, active effort to find a job during the 4-week period ending with the survey reference week OR they were temporarily laid off and expecting to be recalled to their job.
Consumer Price Index (CPI)	<ul style="list-style-type: none"> • A measure of the average change over time in the prices paid by consumers for a representative basket of consumer goods and services. • The CPI measures inflation as experienced by consumers in their day-to-day living expenses.
Inflation Rate	<ul style="list-style-type: none"> • In this report, year-over-year changes in CPI are defined as inflation. The annual inflation rate is calculated every month as: • $Inflation = \frac{(CPI\ of\ latest\ month\ this\ year) - (CPI\ of\ last\ years'\ same\ month)}{(CPI\ of\ last\ years'\ same\ month)} * 100$